

PORT COLUMBUS INTERNATIONAL AIRPORT (CMH)

Updated: June 23, 2011

WHAT IS IT, AND WHY IS IT SO IMPORTANT?

Port Columbus International Airport primarily serves passengers, while Rickenbacker International Airport is primarily a cargo airport. Port Columbus serves 33 airports with 147 daily departures by 10 airlines. In 2009, it served over 6.2 million passengers, down 9.8% from the previous year. However, in addition to air passengers, the airport also handles freight shipments such as small package cargo and mail.

MAJOR USERS OF PORT

Passenger Airlines

- Southwest
- Delta
- US Airways
- American
- United

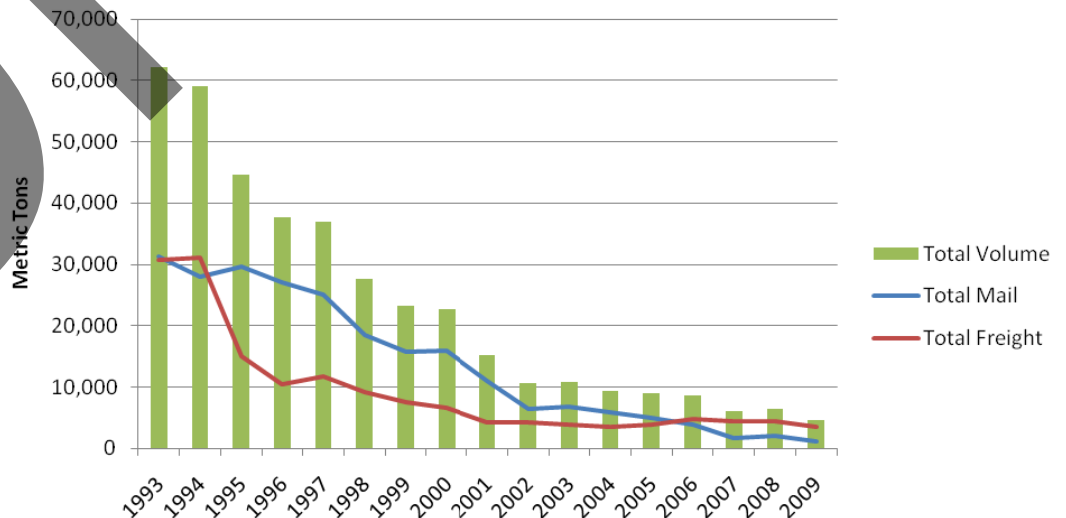
Cargo Shippers

- Airnet System
- Ameriflight
- Ameristar Jet Charter, Inc
- IFL Group, Inc.
- Kalitta
- Mountain Air Cargo

IMPORTANCE TO CENTRAL OHIO

The chart below shows that Port Columbus has shifted some of the focus it had placed on small package freight and mail to passenger service since 1995. The metric tons of both mail and freight coming through Port Columbus continues to decline. Port Columbus expects all-cargo and military operations to remain flat into the future, because of Rickenbacker.

Port Columbus Air Cargo Volumes



Source: Columbus Regional Airport Authority (<http://www.columbusairports.com>)

MAJOR INVESTMENT

Port Columbus's success has spurred the Columbus Port Authority to invest heavily in its future. Among improvements will be a new southern runway which will allow simultaneous runway operations. In addition to this project, the airport is working to upgrade check baggage security and pickup facilities.

morpc