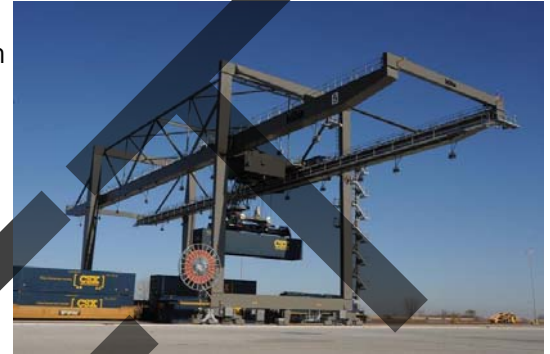


NATIONAL GATEWAY & OHIO

Updated: June 23, 2011

WHAT IS IT, AND WHY IS IT SO IMPORTANT?

The National Gateway is a CSX project to create a more efficient rail route between Atlantic ports and the Midwest. Similar to the Norfolk Southern's Heartland Corridor, it involves upgrading of bridges and tunnels along an existing rail lines to accommodate trains carrying double-stack containers. The routes being upgraded as part of the National Gateway stretch from North Carolina to



Illinois. This includes the I-95 Corridor between North Carolina and Baltimore, via Washington, DC, the I-70/I-76 Corridor between Washington, DC and Ohio via Pittsburgh, and the Carolina Corridor between Wilmington, NC and Charlotte. According to CSX, the National Gateway will deliver over \$1.7 billion of public benefits to Ohio. These benefits include the reduction over 2 million tons of carbon dioxide emissions, almost \$70 million in highway maintenance costs savings, and \$350 million saved in logistics costs.

NORTH BALTIMORE

The North Baltimore Intermodal Facility will allow for a direct interchange between freight trains from the eastern and western United States, allowing freight to bypass choke points like Chicago. The North Baltimore Intermodal Facility will mainly be used to switch shipping containers between freight trains; however, it will include provisions for moving freight onto trucks and highways. CSX has planned for approximately 70 trucks to enter or exit

the facility each day and has space on-site for approximately 280 trailers. The North Baltimore Intermodal Facility will allow freight that is destined for Central Ohio to reach the area faster and more efficiently, especially from the West. Trains from the Western United States will be able to bypass Chicago and be classified onto new trains at North Baltimore, saving time on their way to the area.

CENTRAL OHIO

Not only will central Ohio benefit from the creation of the North Baltimore yard, CSX has plans to expand their intermodal operations in the region as a result of the National Gateway.

CSX's current intermodal operations take place at Buckeye Yard on the west side of Columbus. In 2010, Buckeye Yard had over 180,000 intermodal lifts.

PUBLIC PRIVATE PARTNERSHIP

The National Gateway is being built as a public-private partnership. CSX has committed \$395 million to the estimated \$842 million project with the remainder coming from the federal government and state governments along the route.

NORTH BALTIMORE

CSX has built a larger intermodal and container classification yard in North Baltimore, Ohio. This facility is over 4 miles long and relocated CSX's intermodal center from Chicago to Ohio.

morpc