



Mid-Ohio Regional Planning Commission

State of the Region 2009

Issue: Place

Metric: Parks and Conserved Land

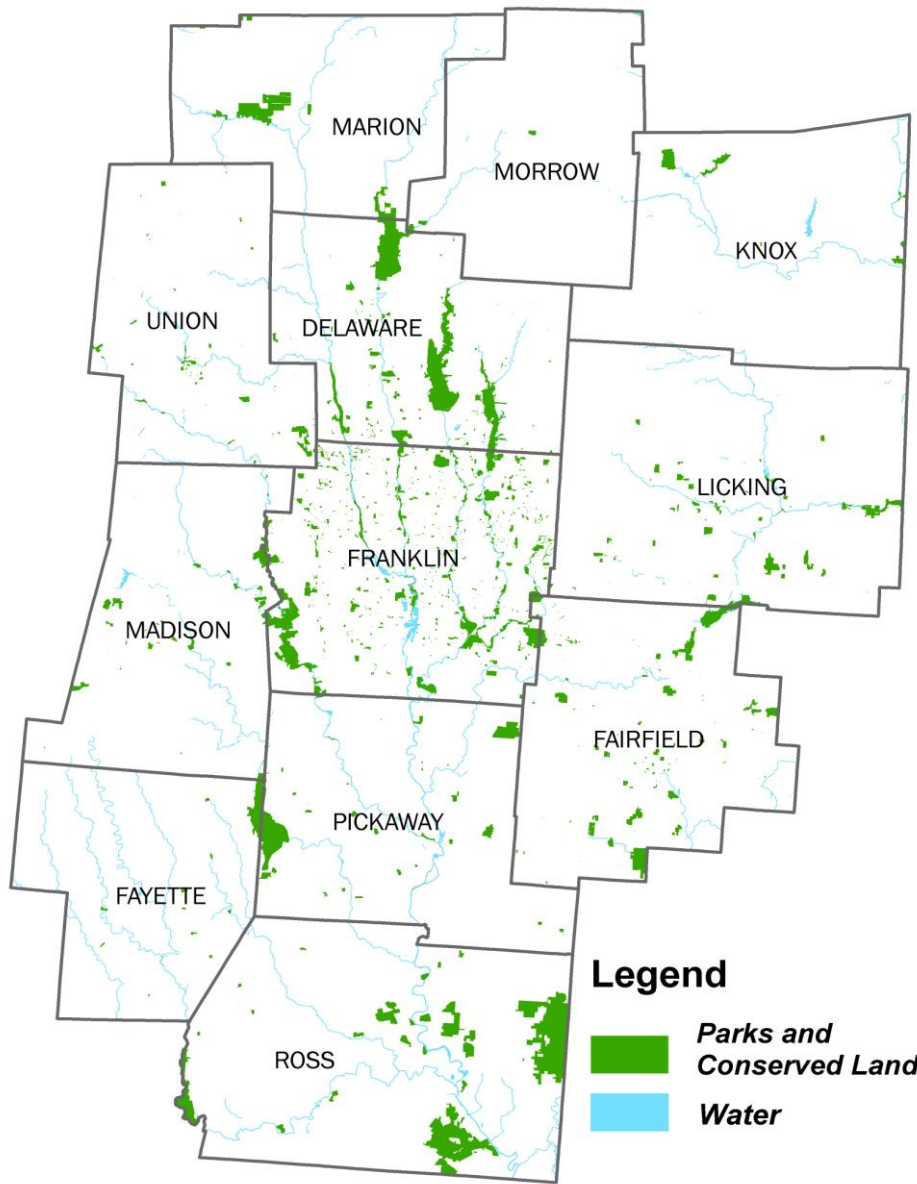
The map on the following page shows the preserved land in central Ohio: parks, preserves, conservation easements and other green spaces. Parks and preserves are public land, accessible to everyone. Conservation easements protect private land from development without changing its ownership; landowners can get tax benefits from conservation easements.

Some areas, such as Jefferson Township in eastern Franklin County, practice conservation development planning in order to assure the preservation of open space as the population continues to grow. Franklin County and Prairie Township are collaborating to write a conservation subdivision zoning overlay for application in areas encompassed by the Big Darby Accord, an agreement by many local jurisdictions to preserve the integrity of the natural environment and species in the Big Darby Watershed. Recent collaboration between regional governments and agencies (including MORPC) has resulted in the development of the Fairfield County Active Transportation and Open Space Plan; see the MORPC website (www.morpc.org) for further details.

County*	Parks and Conserved Land (Acres)				Approximate Percentage of Land Area in Parks and Conserved Land
	Community and Neighborhood Parks	Regional/State/National Parks	Preserves	Conservation Easements	
Delaware	942	22,110	148		8.2%
Fairfield	688	4,863	782	720	2.2%
Fayette		92	3,059		1.2%
Franklin	3,338	20,833	340	2,260	7.7%
Knox		346	2,240		0.8%
Licking	68	2,963	827	295	0.9%
Madison	34	1,497			0.5%
Marion			6,690		2.6%
Morrow		562			0.2%
Pickaway	20	7,466			2.3%
Ross	54	28,050	4,305		7.4%
Union	95	1,535		102	0.6%
Region	5,239	90,316	18,390	3,377	3.1%

Source: MORPC collects geographic data from individual counties

Note: These data may not include all parks in the region.



Legend

- Parks and Conserved Land*
- Water*

