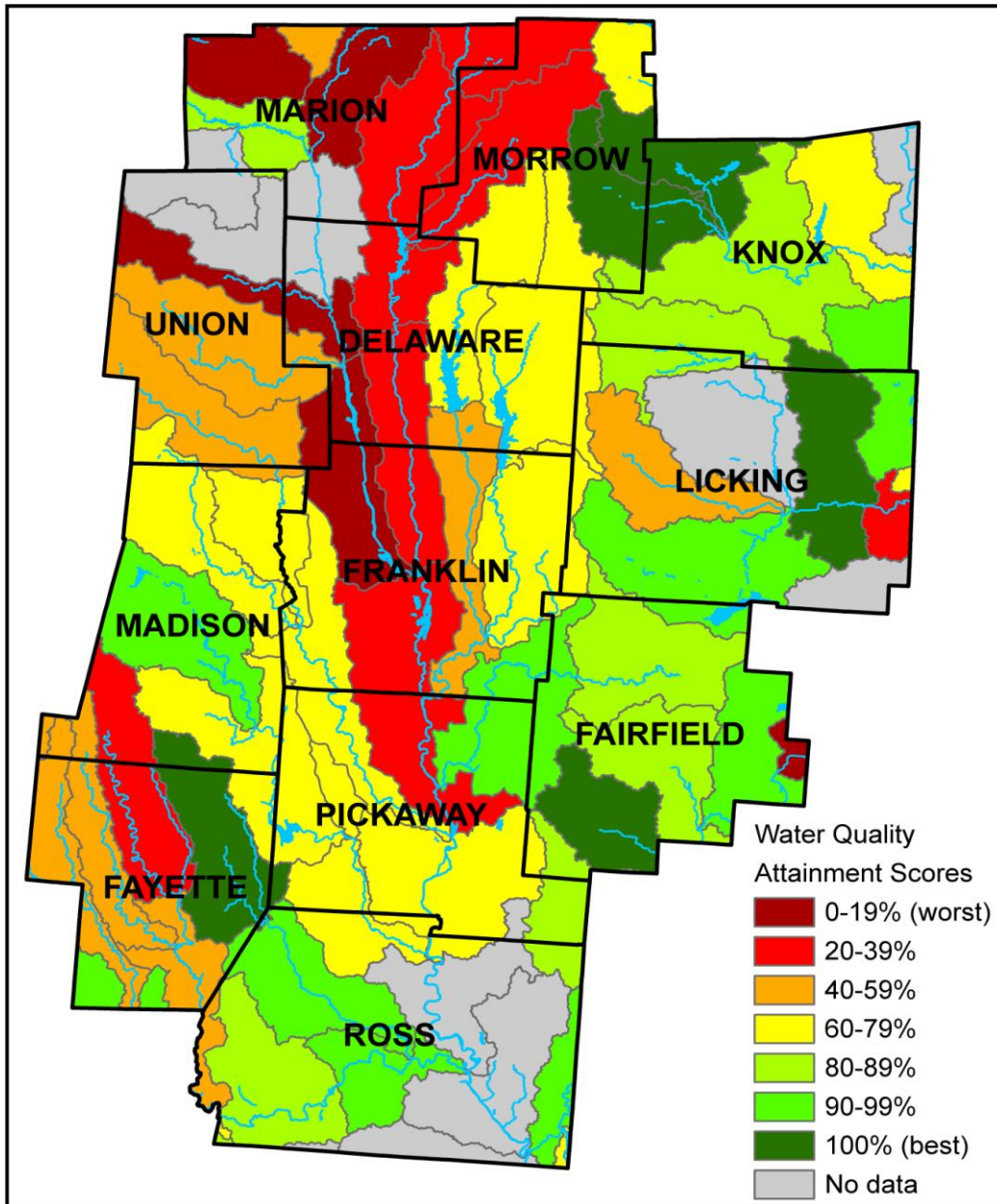


The Ohio EPA monitors water quality by measuring the abundance and diversity of wildlife (mainly fish and aquatic insects) in streams and rivers. Only certain species can tolerate polluting chemicals, so the wildlife in polluted streams is less diverse.

The EPA divides the state into watershed regions and assigns an attainment score to each region; the cleanest streams are at 100% attainment. The map below shows the attainment scores for watersheds in Central Ohio as of late 2007. Of the 69 separate watersheds in Central Ohio, only 4 are currently at full attainment.



Source: Ohio EPA

<http://www.epa.state.oh.us/dsw/tmdl/2008IntReport/2008OhioIntegratedReport.html>