

## Motorcyclists

For the years 2005 to 2007, the MORPC transportation planning area showed a total of 1,377 reported motorcycle crashes involving 1,517 motorcyclists. While the number of crashes remained steady between the years 2005 and 2006, it increased by 31 percent from 2006 to 2007.

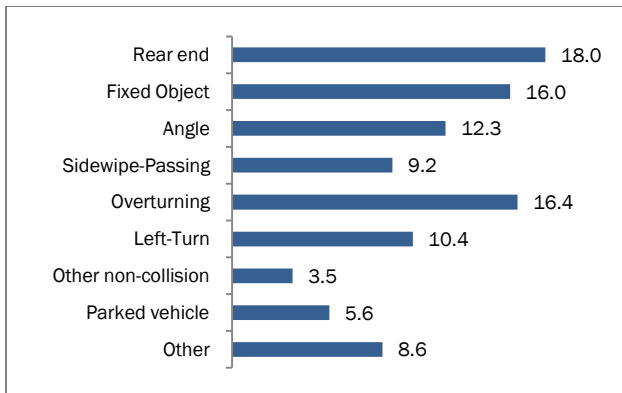
Similar to non-motorized transportation users, motorcyclists are significantly vulnerable, with 77 percent of crashes resulting in some type of injury, and 3 percent were fatal, with a total of 32 fatalities. The high number of motorcycle fatalities reflects the inherently greater risk associated with high speeds and lack of body protection and safety features compared to motor vehicles.

Although helmet usage is proven to be effective in preventing serious brain damage and fatal injuries, many motorcyclists do not use them. About 50% of motorcyclists killed in crashes (15 out of 32 fatalities in MORPC's area) were not wearing helmets.

34 percent of the fatally injured motorcyclists were recorded as having been under the influence of alcohol or drugs.

As Figure 1 illustrates, the top 5 reported crash types in motorcycle-related crashes are rear-end, fixed-object, angle, sideswipe passing and overturning.

Figure 1: Motorcycle-related Crashes by Crash Type [in %]

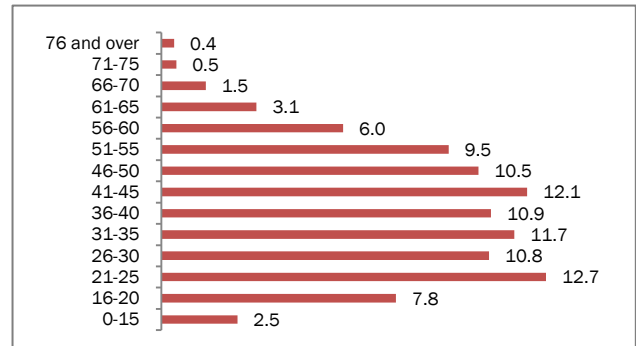


Source: MORPC Crash Data 2005-2007; N=1,377

Nearly 90 percent of all motorcycle-related crashes occurred during the warmer months from April through October, and during dry road conditions. Over half of these crashes happened during the day and nearly half were non-intersection-related.

Over one-third of all reported motorcycle crashes involved young drivers between the ages of 16 and 30 years, and over 50 percent involved adults ages 31 to 55 years (see Figure 2).

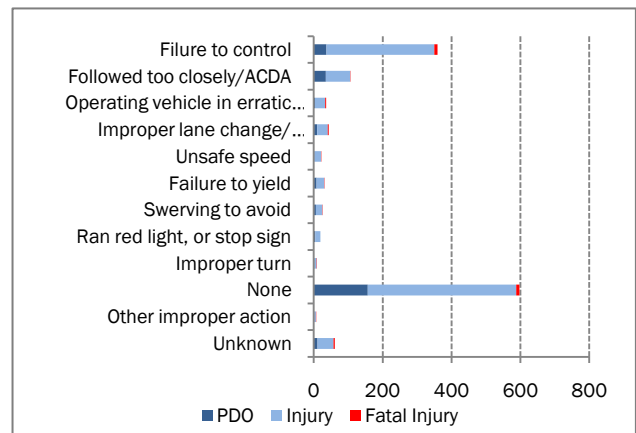
Figure 2: Motorcyclists in Crashes by Age [in %]



Source: MORPC Crash Data 2005-2007; N=1,431

As Figure 3 illustrates, those factors that most commonly were reported to contribute to the crash were “failure to control” and “followed too closely.”

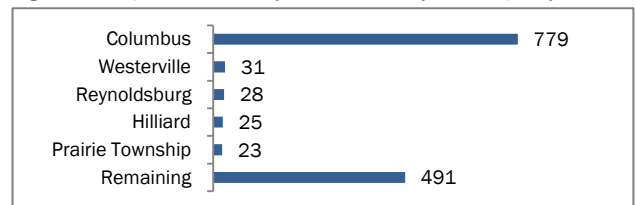
Figure 3: Motorcycle Crashes by Contributing Factors



Source: MORPC Crash Data 2005-2007; N=1,317

The majority of reported motorcycle crashes occurred within the City of Columbus, followed by Westerville, Reynoldsburg, Hilliard, and Prairie Township. As Figure 4 illustrates, most of the motorcycle-related crashes in the 3-year period occurred within the City of Columbus (57 percent).

Figure 4: Reported Motorcycle Crashes by Municipality



Source: MORPC Crash Data 2005-2007; N=1,377

