

Overall Crash Facts

Between the years of 2005 and 2007, a total of 124,533 crashes involving 334,828 people occurred in MORPC's transportation planning area. During this time frame, there were 289 fatal crashes, in which 304 people lost their lives. 32,093 crashes resulted in one person or more being injured.

The total annual number of crashes decreased by 2.2% from 2005 to 2007, while the number of injury crashes decreased by 4.8% and the number of fatal crashes decreased by 16.5%. The total numbers are reported in Table 1.

Table 1: Reported Crashes by Severity

Year	Fatal	Injury	PDO	Private Property	Total
2005	109	11,015	28,970	2,024	42,118
2006	89	10,593	29,003	1,551	41,236
2007	91	10,485	28,943	1,660	41,179
Total	289	32,093	86,916	5,235	124,533
Average	96	10,698	28,972	1,745	41,511

Source: MORPC Crash Data 2005-2007

Approximately 2 out of 5 crashes resulted in one or more injuries. However, nearly 4 out of 5 crashes that involved a pedestrian, a bicyclist or a motorcyclist resulted in some type of injury (see Table 2). These statistics show that the injury risk in a crash decreases with increased protection.

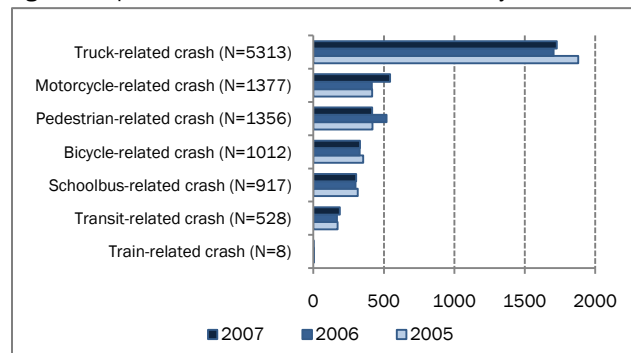
Table 2: Reported Crashes by Vehicle Mode and Severity

2005-2007	Number	% of all Crashes	% that resulted in injuries
Pedestrian-related	1,356	1.1%	82%
Bicycle-related	1,012	0.8%	78%
Motorcycle-related	1,377	1.1%	75%
Transit	528	0.4%	24%
Truck-related	5,313	4.3%	20%
School bus-related	917	0.7%	18%
All Crashes	124,533	100%	40.8%

Source: MORPC Crash Data 2005-2007

Figure 1 shows that while crashes overall decreased over the three-year period, motorcycle and transit crashes increased.

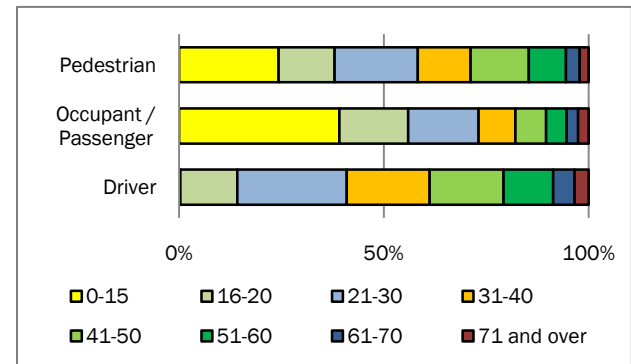
Figure 1: Special Vehicle User-Related Crashes by Year



Source: MORPC Crash Data 2005-2007; N=10,511

Over 40 percent of the drivers involved in crashes were between the ages of 16 and 30 years (see Figure 2). Nearly 50 percent of the drivers were male, 38 percent female, and for 12 percent the gender was not reported.

Figure 2: People in Crashes [in %] by Selected Type and Age

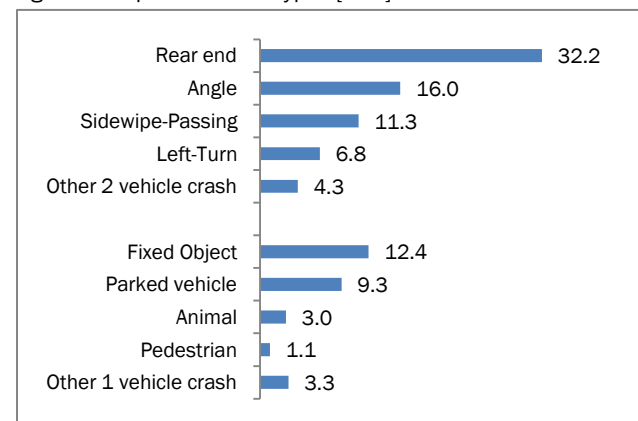


Source: MORPC Crash Data 2005-2007; N=298,328

The majority of crashes involved a passenger car¹ (74 percent), followed by pick-up trucks/vans (12 percent), heavy trucks (2.2 percent) and bicyclists/pedestrians (1.0 percent).

The most common type of reported crashes were rear-end, followed by angle, fixed object, sideswipe passing and parked vehicle crashes (see Figure 3).

Figure 3: Reported Crash Types [in %]



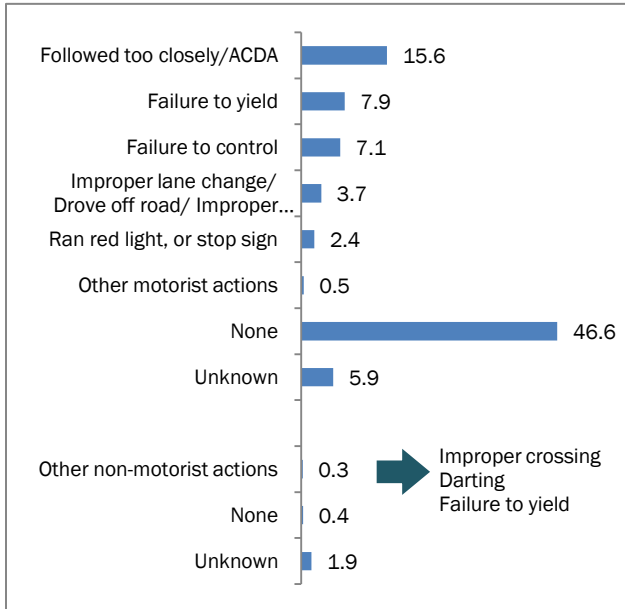
Source: MORPC Crash Data 2005-2007; N=124,522

As Figure 4 shows, "following too closely," "failure to yield," and "failure to control" were the three most

¹ Passenger car includes Mid size, full size, Minivan, SUV, Pickup, and Van.

commonly reported factors contributing to crashes. Related to non-motorists' actions, "improper crossing," "darting," or "failure to yield right-of-way" were reported most frequently.

Figure 4: Reported Crashes by Probable Cause [in %]

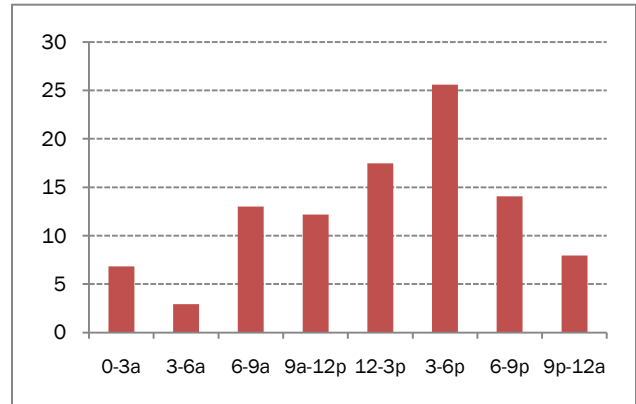


Source: MORPC Crash Data 2005-2007; N=223,280

It is important to note that the reported contributing crash factors are often subjective and therefore need to be read with caution. The reporting is limited to the officer's ability to fully understand the reasons behind the crash and to rely on the honesty of the crash participant. They are therefore referred to as "probable cause."

The majority of reported crashes occurred during the afternoon and early evening hours, between 12 p.m. and 9 p.m. (see Figure 5).

Figure 5: Reported Crashes by Time of Day [in %]



Source: MORPC Crash Data 2005-2007; N=124,533

