

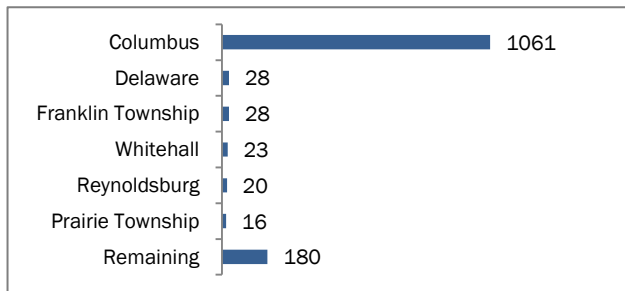
Pedestrians

Between the years of 2005 and 2007, a total of 1,356 pedestrian-related crashes were reported in the MORPC planning area, with a total of 37 pedestrians killed. Even though pedestrian-related crashes make up only 1.1 percent of all crashes, they are responsible for 13 percent of all fatal crashes.

With approximately 80 percent of all non-motorist crashes resulting in some type of injury, pedestrians and bicyclists are especially vulnerable transportation users. These statistics emphasize the importance of both motorist and non-motorist education on traffic laws, as well as the need to increase visibility of non-motorists on the roadways.

Figure 1 shows that the majority of all pedestrian-related crashes in the 3-year period occurred within the City of Columbus (78 percent).

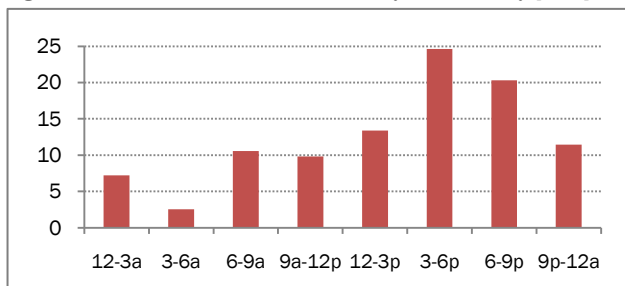
Figure 1: Pedestrian-related Crashes by Municipality



Source: MORPC Crash Data 2005-2007; N=1,356

Figure 2 shows that pedestrian-related crashes are most common between the hours of 3 p.m. and 9 p.m.

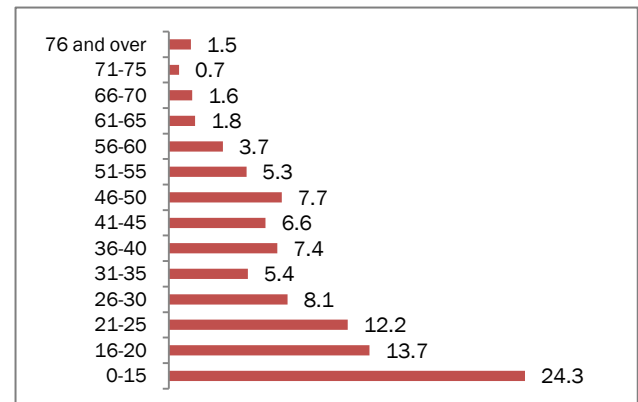
Figure 2: Pedestrian-related Crashes by Time of Day [in %]



Source: MORPC Crash Data 2005-2007; N=1,356

Figure 3 shows the age distribution of pedestrians involved in crashes with motor vehicles. 24 percent of all reported pedestrian crashes involved children under the age of 15. Over 30 percent of the crashes included teenagers and young adults between the ages of 16 and 30.

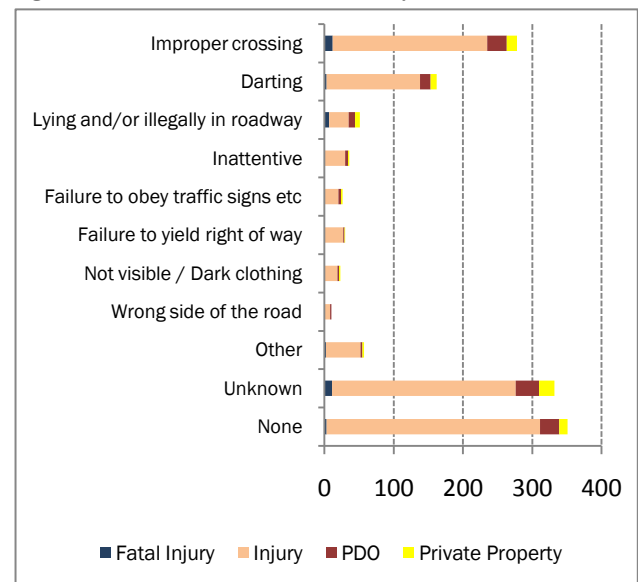
Figure 3: Pedestrians Involved in Crashes by Age [in %]



Source: MORPC Crash Data 2005-2007; N=1,290

“Improper crossing” was reportedly the most common known cause for pedestrian fatalities, followed by “darting” (see Figure 4).

Figure 4: Pedestrian-related Crashes by Probable Cause



Source: MORPC Crash Data 2005-2007; N=1,356

Most of the 37 pedestrian fatalities within the 3-year period occurred in urban areas (85 percent), on the roadway (92 percent), at non-intersection locations (64 percent), in normal weather conditions (87 percent), and during the night (64 percent).

