

Pickaway East-West Connector

Submitted by: Pickaway County Engineer's Office

Project ID per ODOT: ODOT PID: 83666	Total Project Cost: \$51,080,000
	Funding Requested from TRAC: Current Request: \$2,700,000 <i>Tier II to Tier II</i>

Project Description

The Pickaway East-West Connector ("Connector") is a proposed four-lane roadway stretching roughly four and one half miles from the southern end of Rickenbacker Airport in the vicinity of the Norfolk Southern Rickenbacker Intermodal Terminal ("Intermodal") to US 23. At its eastern terminus, the Connector would tie into Rickenbacker Parkway at a new signalized intersection with one of two existing roadways: Lockbourne-Eastern Road or Ashville Pike. The Connector's western terminus will be at US 23 and Duvall Road, where a new interchange will be constructed. The preliminary design of the Connector proposes a four-lane roadway with a shared use path on one side. The design speed is proposed at 60 MPH. All rail crossings are proposed to be grade separated. This funding application is asking for \$2.7 million to complete the Detailed Design phase of the ODOT Project Development Process.

Potential Impacts

In 2009, MORPC and the Columbus Chamber ranked the Connector and improvements at the Alum Creek Drive/I-270 as top priorities for funding. With improvements made to the Rickenbacker advanced logistics region's northern entrance (Alum Creek Drive/I-270) and its southern entrance (the Connector), traffic congestion will be alleviated with a resulting road network able to handle Rickenbacker's growth for the next 20-30 years. The Alum Creek Drive/I-270 project was approved for Fast TRAC funding in 2009.

Already, congestion is making it increasingly difficult to sell the Rickenbacker region as Ohio's premier gateway and logistics hub. Over 200 businesses are located in the area with the large majority engaged in logistics activities. Over the next 30 years, these activities will comprise over 34 million square feet of space and well over 9,500 direct and 10,800 indirect employees. However, over the last two years, at least four distribution center projects totaling 3.2 million square feet have been lost with feedback that roadway congestion was a key determinant in the site selectors' decision. Half of those projects moved out of state.

Is this project on MORPC's 2030 Transportation Plan? YES NO

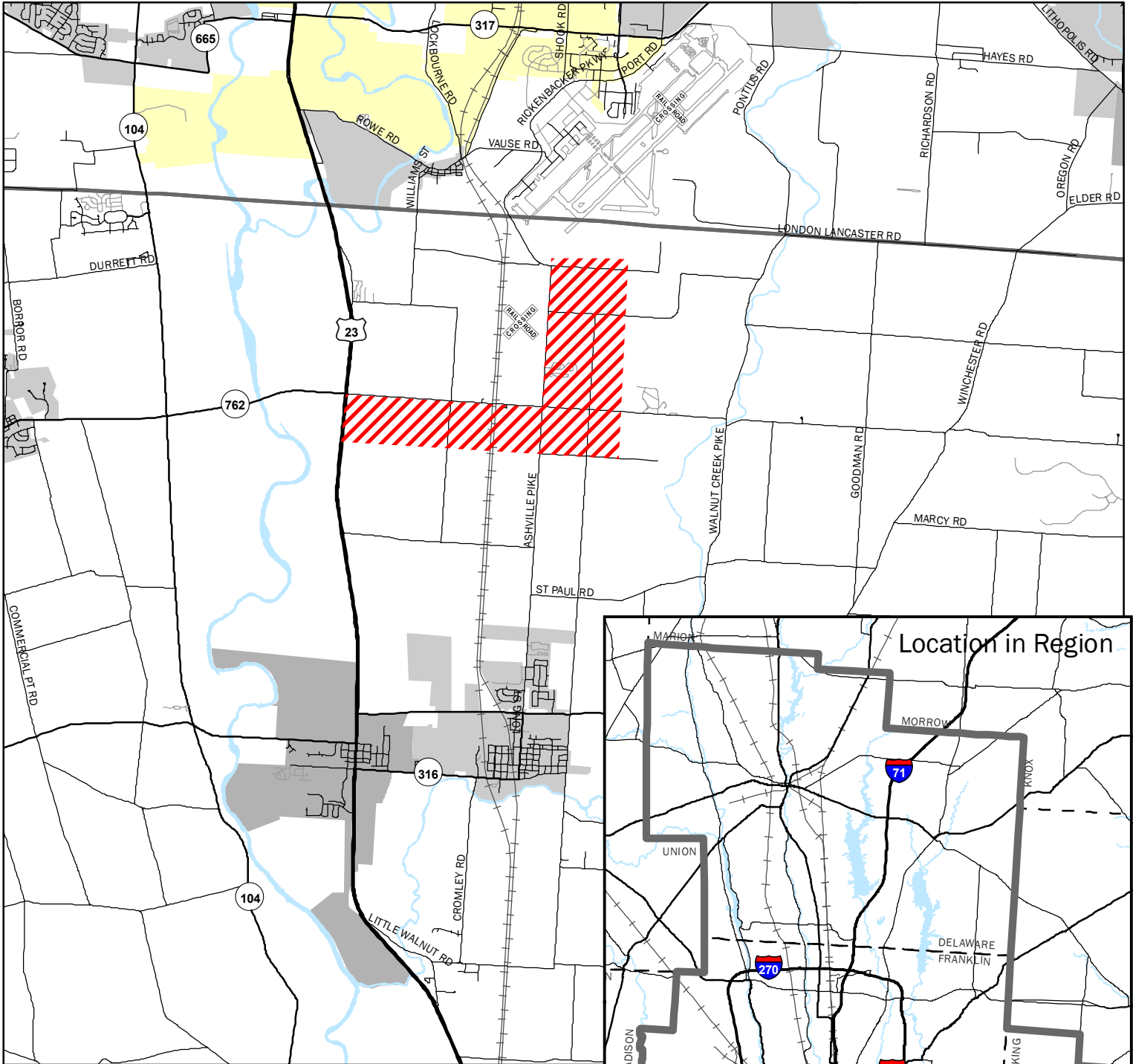
Bicycle, pedestrian and/or transit facilities? YES NO

Progress toward Construction

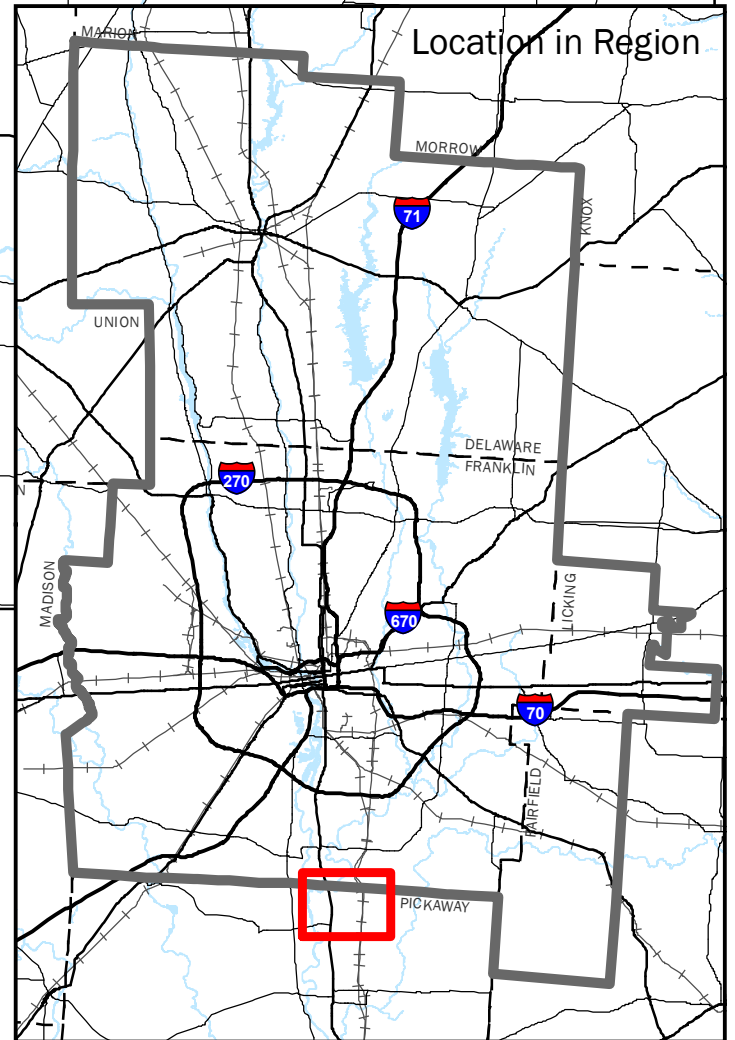
Planning Study	September 2009
Interchange Justification Study	September 2012
NEPA:	December 2010
Detailed Design	September 2013
Right of Way:	June 2014

Please see the project location map on the reverse

Pickaway East - West Connector



Project Location



7.5 0 7.5 Miles

