



# MORPC Regional Assisted Evacuation Plan

Steering Committee Meeting

October 23, 2009



*focus on transportation of mobility needs populations*



**Baker**

## Opening Remarks

Dan Haake

MORPC Project Manager



*focus on transportation of mobility needs populations*



**Baker**

## Agenda

- Project introduction
- Kettering Foundation Research Update
- Project Status
- Plan Structure
- Existing Conditions Report
- Public Outreach Program Status
- Steering Committee Action Items
- Q&A
- Next Steps



*focus on transportation of mobility needs populations*



**Baker**

## Mobility Needs Populations Overview

- Best current guidance -FEMA CPG 301
- Special Needs-Very broad definition
  - e.g. Hospitals, nursing homes, prisons
- “Mobility Needs” may not be “special”
  - maybe simply carless
- Attempt to be consistent with grant goals
- Refine definition for project
  - follow established state definition



*focus on transportation of mobility needs populations*



**Baker**

## Project Overview

- **Create 7-county evacuation plan for populations with *mobility needs***
  - Delaware, Fairfield, Franklin, Licking, Madison, Pickaway and Union
- **Research project funded by FTA (Federal Transit Administration)**
  - Will be model for other U.S. regions
  - Operational locally

Not intended to replace plans but focus on mobility needs



*focus on transportation of mobility needs populations*



**Baker**

## Approach

### Phase I – Research and Analysis

- Information gathering and gap identification
- Coordinate with Kettering Foundation research



*focus on transportation of mobility needs populations*



**Baker**

# Approach

## Phase II – Planning

- Coordination and *visioning* phase
- Intensive outreach to specific groups
  - Mobility needs populations
  - Emergency and first responders



focus on transportation of mobility needs populations



# Approach

## Phase III – Adoption

- Consensus building among stakeholders
- Incorporate comments into final plan



focus on transportation of mobility needs populations



# Approach

## Phase IV – Implementation

- Design signage
- Create reference materials
  - Training manual
  - Educational materials
  - Marketing materials



**Planning for Emergency Booklet**

The booklet provides clear information on preparing for:

- Planning for Emergencies (English)
- Planificación para emergencias (Spanish)
- Opredivanje (Hrvatski) i (Srpski) (Croatian/Serbian)

**Family Communication Card**

This card provides clear information and phone numbers. These cards should be kept in a safe place, such as a wallet, purse, or backpack.

- Family Communication Card (English)
- Plan de Comunicación Familiar (Spanish)
- Opredivanje (Hrvatski) i (Srpski) (Croatian/Serbian)

**Shelter in Place Card**

In an emergency it may be dangerous to evacuate if there are harmful agents or materials in your immediate vicinity. This is called Shelter in Place. The Shelter in Place Card provides shelter advice. It also provides steps to take if you do need to evacuate.

- Shelter in Place Card (English)
- Emergency Shelter (Spanish)
- C.Bevanje (Hrvatski) i (Srpski) (Croatian/Serbian)

**Health Information Translations**  
Quality translations in multiple languages

Find Translation

Search By Keywords:  Search

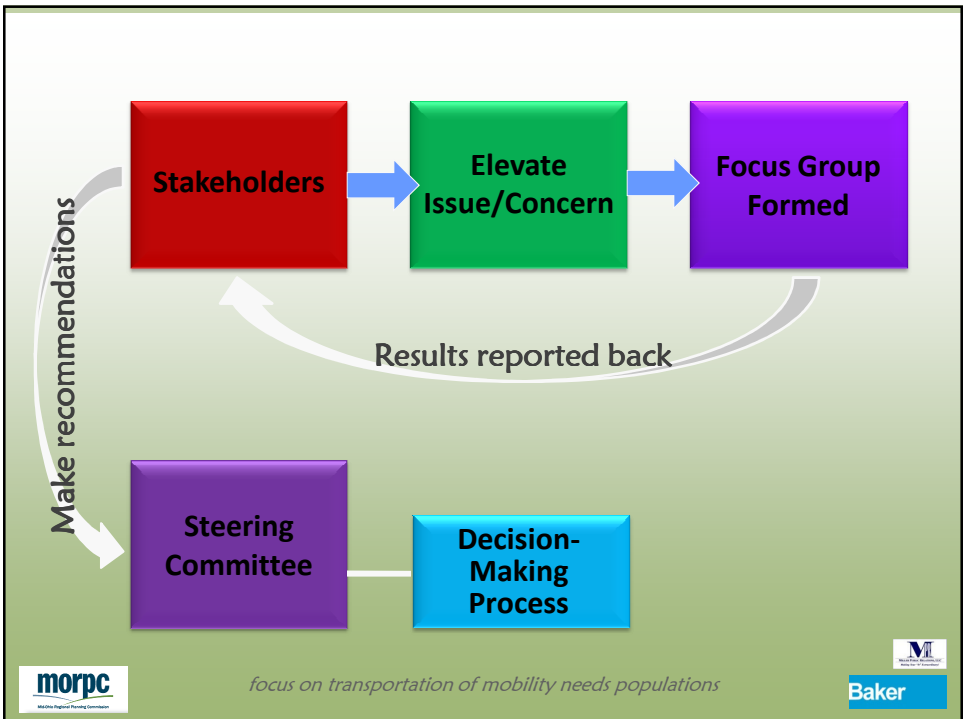
Search By Languages:  Search

Disaster Preparedness

TRINITY HEALTH, MOUNT CARMEL, AMAR, M



focus on transportation of mobility needs populations



focus on transportation of mobility needs populations



## Potential Stakeholders

- Fire/Police/Sheriff
- EMA
- COTA
- CRAA
- ODOT
- National Guard
- OSU
- COTS
- Media: television stations
- Faith-based organizations
- Rural Metro
- FIRSTLINK
- 211/Volunteer
- Private Sector
  - Nursing Home Assoc
  - MRDD
  - Ohio Community Svc Council



*focus on transportation of mobility needs populations*



**Baker**

## Kettering Foundation Research Update

Michael Pompili, MSE, RS



*focus on transportation of mobility needs populations*



**Baker**

## Project Status

- **Deliverables to date:**
  - Final schedule / kickoff meeting
  - Researched & analyzed plans
  - Agreement about definition of “mobility needs”
  - ID key stakeholders
  - Outreach Plan developed /approved
  - Created project stakeholder website
  - *Existing Conditions Report Draft*
  - Plan Outline and option paper



*focus on transportation of mobility needs populations*



**Baker**

## Project Status

- **Future Activities Next Month**
  - Identify/map mobility needs population in region (that meets the definition)
  - Create MORPC Public website
- **Still on schedule to be completed by Sep 2010**
- **This Research Project has multiple task beyond the plan , e.g. signage, education material, etc.**



*focus on transportation of mobility needs populations*



**Baker**

## Plan Structure

- In 2007 a regional preparedness/evacuation plan was to begin
  - 7 components of plan were to include Decision Making, Planning, Public Communications, Special Needs, Ops, Sheltering, Training
- Plan was not developed
- This Project was to be continuation & integrated into that effort
- Contract awarded
  - Best way to now proceed



*focus on transportation of mobility needs populations*



Baker

## Plan Structure

- Appendix can supplement existing plans/annexes
- Can be cross referenced (stand alone) or customized/ incorporated into annex at county level, i.e. maps/checklists
  - Many emergency management plans do not follow common format, e.g.
    - Delaware Co./ City of Columbus structured following SLG/CPG 101
    - Fairfield and Pickaway Counties follow somewhat structured common format
    - Union County & Upper Arlington plans are high level



*focus on transportation of mobility needs populations*



Baker

## Existing Conditions Report

- **Process:**
  - Identified planning initiatives/tools required to meet evacuation needs (best practices)
  - Compared these to in-place plans & resources
  - Enables planners to more accurately evaluate the region's capabilities
- **Matrix:**
  - Identifies resources/plans
  - Notes gaps lack of information
  - Provides recommendations
- **Two tier approach**



*focus on transportation of mobility needs populations*



**Baker**

## Public Outreach Program

- **Define and document public involvement program**
  - Living document
  - Schedule identifies review /comment periods
- **Plan purpose and goals**
  - Inform general public of plan
    - Initially intended for mobility needs populations
  - Identify outreach to mobility needs groups
    - Multi-lingual needs
    - Different physical capabilities
    - Transportation limitations



*focus on transportation of mobility needs populations*



**Baker**

## Today's Action Items

- Finalize Definition
- Approval of Plan Appendix Outline
- Validation of Existing Conditions Report



*focus on transportation of mobility needs populations*



**Baker**

## Mobility Needs Populations

### Finalize Definition

So far “Individuals who cannot drive, do not own, or have access to a vehicle and may require transportation support for successful evacuation. This support may include accessible vehicles (e.g., lift-equipped or vehicles suitable for transporting individuals who use oxygen) or information about how and where to access mass transportation during an evacuation”.



*focus on transportation of mobility needs populations*



**Baker**

## Plan Structure

### Approval of Plan/Appendix Outline



*focus on transportation of mobility needs populations*



## Plan Structure

- **Special Planning**
  - Transportation and Sheltering Arrangements
  - Identification of Required Transportation for Mobility Needs Populations
  - Public Communications and Preparedness
  - Service Animal Management
  - Reentry for the Mobility Needs Assisted Populations
  - Coordination of Evacuation of Special Facilities



*focus on transportation of mobility needs populations*



## Plan Structure

- Maps
- Emergency Response Checklists
- Paratransit Vehicle Inventory
- Volunteer and Professional Evacuation Labor Support List



*focus on transportation of mobility needs populations*



**Baker**

## Existing Conditions Report

### Validation of Existing Conditions Report



*focus on transportation of mobility needs populations*



**Baker**

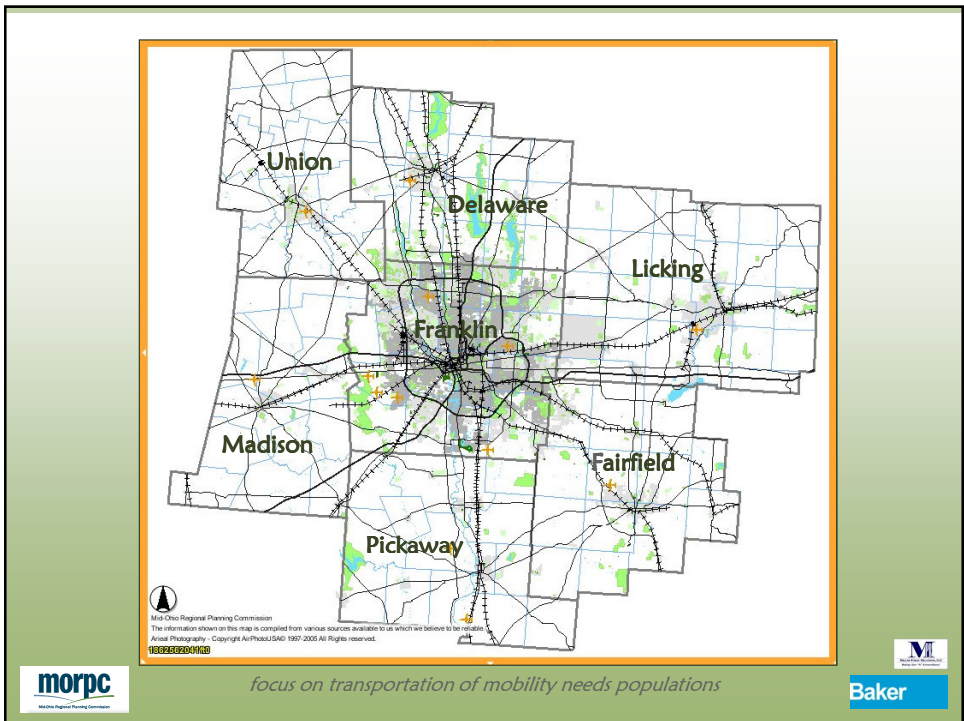


# MORPC Regional Assisted Evacuation Plan

Questions ?  
Next Steps ...



*focus on transportation of mobility needs populations*



*focus on transportation of mobility needs populations*

