



MORPC Regional Assisted Evacuation Plan

Steering Committee Inaugural Meeting

April 10, 2009



Opening Remarks

Chris Gawronski
MORPC Project Manager



Agenda

- **Special needs populations**
- **Project introduction**
 - Project overview
 - Steering Committee and Stakeholders
 - Public outreach
 - Focus Groups
 - Information collection
 - Additional outreach efforts
 - Project website (MPOWR)
- **Today's action items**

Special Needs Populations

- **Foundation for project: define 'special needs'**
- **Term is somewhat controversial**
 - Access and functional needs
- **Best current guidance**
 - FEMA CPG 301
 - FEMA and DHS OCRCL
August 2008
- **Function-based needs**
 - Reflects capabilities
 - Not condition or label



Special Needs Populations

- **National Response Framework definition:**
Additional needs before/during/after incident
 - Maintain independence
 - Communication
 - Transportation
 - Supervision
 - Medical care
- **Very broad definition**
 - Consistent with grant goals
 - Consistent with MORPC scope of work



Baker

Special Needs Populations

- **Create focus group**
 - Participatory planning
 - Include representatives of special needs groups
 - “Nothing about us, without us”
 - Refine definition for project
 - Special needs populations in region
 - Identify the special needs populations
 - Reach out to these communities/groups
 - Review deliverables



Baker

Project Overview

- **Create 7-county evacuation plan for populations with *mobility needs***
 - Delaware, Fairfield, Franklin, Licking, Madison, Pickaway and Union Counties
- **Research project funded by FTA (Federal Transit Administration)**
 - Will be a model for other U.S. regions
- **Complete September 2010**
 - Possible 6-month extension by FTA

Not intended to replace existing local plans!



Baker

Approach

Phase I – Research and Analysis

- **Information gathering and gap identification**
 - Existing emergency preparedness plans
 - How do plans currently address mobility needs?
 - Identify current shelters
- **Coordinate with Kettering Foundation research**



Baker

Approach

Phase II – Planning

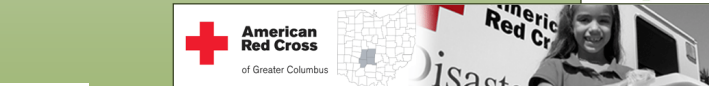
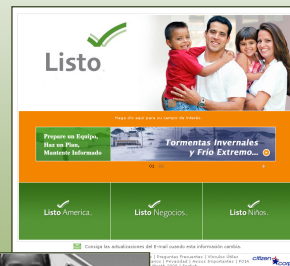
- Coordination and *visioning* phase
- Intensive outreach to specific groups
 - Mobility needs populations
 - Emergency and first responders



Approach

Phase III – Adoption

- Consensus building among stakeholders
- Incorporate comments into final plan



Approach

Phase IV – Implementation

- Design signage
- Create reference materials
 - Training manual
 - Educational materials
 - Marketing materials



Planning for Emergency Booklet

The booklet provides clear information on preparing for:

- **Planning for Emergencies (English)**
- **Planificación para Emergencias (Spanish)**
- **Quadrante de Plan and Disaster Safety (Lithuanian, Russian, Spanish, Vietnamese)**

Family Communication Card

This is a pocket-sized card to keep important information and phone numbers. These cards are ready and can fit easily into a purse, pocket, or backpack.

- **Family Communication Card (English)**
- **Plan de Comunicación Familiar (Spanish)**
- **Quadrante de Comunicação Familiar (Lithuanian)**

Shelter in Place Card

In an emergency it may be dangerous to evacuate if there are harmful agents or materials in your immediate area. This is called Shelter in Place. The Shelter-in-Place Card provides shelter advice. It also provides tips to take if you do need to evacuate.

- **Shelter in Place Card (English)**
- **Planificación para Emergencias (Spanish)**
- **Cardaizavimas (Lithuanian)**

Health Information Translations
Quality Translations in Multiple Languages

Find Translation

Search By Keywords: Search

Search By Languages: Search

Disaster Preparedness

Providing support for this project provided by:



Steering Committee

- Key decision-makers and project leaders
 - Direct plan development
 - Identify project goals and measures of success
 - Identify stakeholders and interest groups
 - Discuss existing plans and their incorporation
 - Provide input and render decisions
 - Make final recommendations
- Attend bi-monthly meetings
 - Review project status
 - Address current issues and concerns
 - Maintain momentum



Stakeholders

- **Contribute to plan development and implementation**
 - Assist with outreach to special needs populations
 - Senior care facilities,
 - Faith-based organizations
 - Community organizations
 - Provide feedback
 - Coordinate with Kettering Foundation research
- **Two sets of stakeholder meetings**
 - Prior to plan development
 - Discuss project goals and objectives
 - Stakeholder input and concerns
 - After plan is drafted
 - Discuss plan and obtain feedback



Baker

Potential Stakeholders

- **Fire/Police/Sheriff**
- **EMA**
- **COTA**
- **CRAA**
- **ODOT**
- **National Guard**
- **OSU**
- **COTS**
- **Media: television stations**
- **Faith-based organizations**
- **Rural Metro**
- **FIRSTLINK**
- **211/Volunteer**
- **Private Sector**
 - Nursing Home Assoc
 - MRDD
 - Ohio Community Svc Council



Baker

Public Outreach Plan

- **Define and document public involvement program**
 - Living document
 - Schedule identifies review /comment periods
- **Plan purpose and goals**
 - Inform general public of plan
 - Initially intended for special needs populations
 - Identify outreach to special needs groups
 - Multi-lingual needs
 - Different physical capabilities
 - Transportation limitations



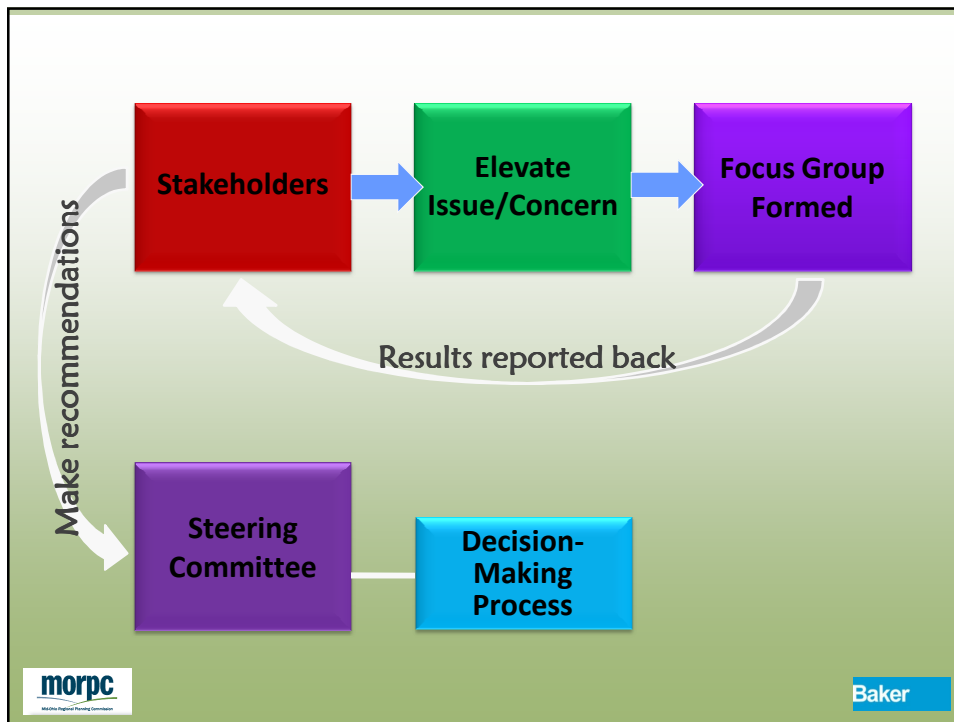
Baker

Focus Groups

- **Support Steering Committee**
- **Address identified issue(s) in detail**
- **As-needed basis during plan development**
 - Identify requirements
 - Level of involvement depends upon task(s)
 - Defining 'special needs'
 - Dealing with anticipated language barriers,
- **Short duration**
 - Meet monthly until issue(s) have been addressed, then focus group disbands



Baker



Research and Analysis

Information gathering

- Existing emergency operations
- Evacuation plans and agreements
- Outreach to local emergency management offices
 - Include web-based searches
- Coordinate with Kettering Foundation research

Purpose of information

- Current procedures for mobility needs populations
- Shelter locations
- Other features and accommodations
- Identify gaps

Additional Outreach Efforts

Michael Pompili, MSE, RS

OSU



Project Website Overview (MPOWR)

Ken Zaklukiewicz
Baker Project Manager



Today's Action Items

- Identify and approve list of stakeholders
- Review/approve Outreach Plan outline
- Web page location (<http://my.bakerprojects.com>)
- Other issues



Baker



MORPC Regional Assisted Evacuation Plan

Questions ?

Next Steps ...



Baker

