



# Plan for Evacuation of the Transportation Needs Populations of Central Ohio

## Perimeter Group Update

May 7, 2010



Baker

# Opening Remarks

Dan Haake

MORPC Project Manager



Baker

## Agenda

- Describe Populations
- Project Overview
- Planned Activities
- Discuss Plan Content
- Questions and Answers

## Functional Needs Populations

- **National Response Framework definition:**  
Additional needs before/during/after incident
  - Maintain independence
  - Communication
  - Transportation
  - Supervision
  - Medical care
- ***Transportation Needs Population***
  - Consistent with grant goals/scope of work



## Functional Needs Populations

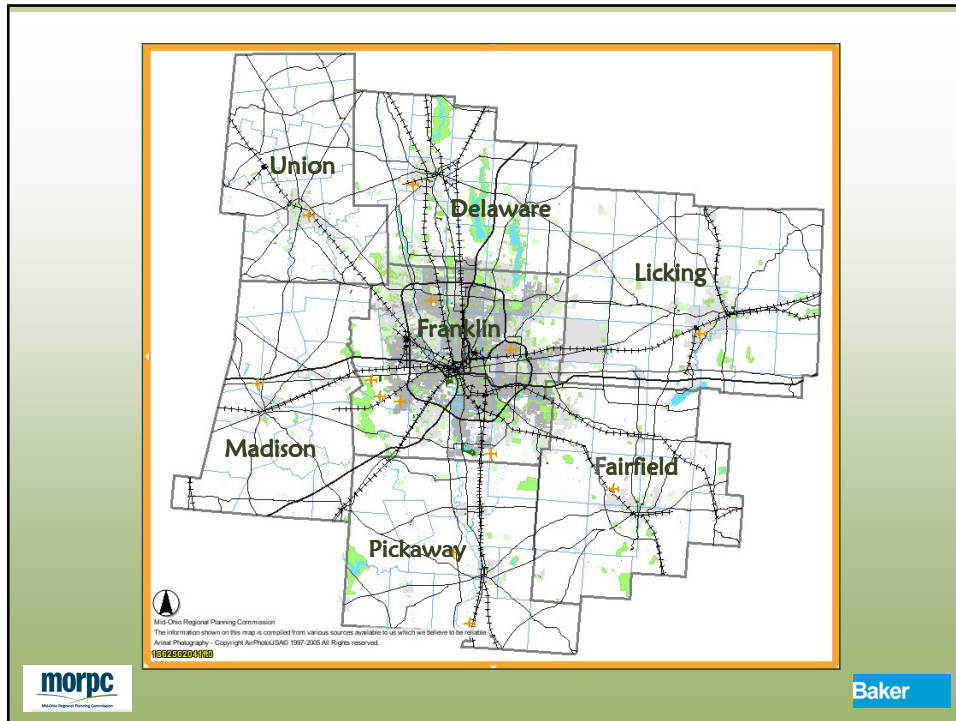
- Foundation for project: definition
- “Special Needs” Term somewhat controversial
- Best current guidance
  - FEMA CPG 301
  - FEMA and DHS OCRCL August 2008



## Project Overview

- Create 7-county evacuation plan for populations with *mobility needs*
  - Delaware, Fairfield, Franklin, Licking, Madison, Pickaway and Union Counties
- Research project funded by FTA (Federal Transit Administration)
  - Will be a model for other U.S. regions
- Complete September 2010

Not intended to replace existing local plans!



## Approach

### Phase I – Research and Analysis

- Information gathering and gap identification
  - Existing emergency preparedness plans
  - How plans currently address transportation needs
- Coordinate with Kettering Foundation Research



# Approach

## Phase II – Planning

- Coordination and visioning phase
- Outreach to specific groups
  - Transportation needs populations



# Approach

## Phase III – Adoption

- Consensus building among stakeholders
- Incorporate comments into final plan



# Approach

## Phase IV – Implementation

- Design signage
- Create reference materials
  - Training manual
  - Educational materials
  - Marketing materials



**Planning for Emergencies Booklet**

The booklet provides clear information on preparing for:

- Planning for Emergencies (English)
- Planificación para Emergencias (Spanish)
- Opredivanje (Hrvatski) i (Slovenski) (Croatian/Slovenian)

**Family Communication Card**

This is a pocket-sized card to keep important information and phone numbers. These cards are ready and can be easily sent as a print, audio, or language:

- Family Communication Card (English)
- Plan de Comunicación Familiar (Spanish)
- Opredivanje (Hrvatski) i (Slovenski) (Croatian/Slovenian)

**Shelter in Place Card**

In an emergency it may be dangerous to evacuate if there are harmful agents or outside air is not clean. This is called Shelter in Place. The Shelter in Place Card provides shelter advice. It also provides steps to take if you do need to evacuate.

- Shelter in Place Card (English)
- Emergency Shelter (Spanish)
- Čuvanje doma (Croatian)

**Health Information Translations**  
Quality translations in multiple languages

Find Translation

Search By Keywords:  Search

Search By Languages:  ALL LANGUAGES

Disaster Preparedness

Providing support for this project provided by:



# Steering Committee

- Key decision-makers and project leaders
  - Direct plan development
  - Identify project goals and measures of success
  - Identify stakeholders and interest groups
  - Discuss existing plans and their incorporation
  - Provide input and render decisions
  - Make final recommendations
  - Review project status
  - Address current issues and concerns
  - Maintain momentum



## Project Milestones

- Developed Outreach Plan
- Created project stakeholder and public website
- Researched & analyzed local plans
- Kettering Foundation Forums
- Created Existing Conditions Report
- Developed 1st and 2nd Draft Plans



Baker

## Plan Content

Plan is divided into four major sections

- Section 1 - Introduction
  - Provides background information and description of the project phases
- Section 2 - General Guidance
  - Gives overview of project area, demographic information for Central Ohio, communication guidelines, public transportation and transit services, transportation and sheltering needs and re-entry considerations



Baker

## Plan Content

- **Section 3-Common Operating Picture**
    - Describes organizational roles and identifies appropriate steps for the evacuation of transportation needs populations
  - **Section 4- Operational Information**
    - Provides specific guidelines, checklists and supplemental information for use by local EMAs and related organizations in the planning and implementation of emergency response measures related to evacuation of transportation needs populations
- For Official Use Only – not available to the public



Baker

## Planned Activities

- **Reach out and work with additional stakeholders**
  - Incorporate additional Stakeholder Comments
  - Publish final plan
- **Conclude Kettering Foundation Forums and develop report**
- **Develop evacuation and shelter sign graphics and make implementation recommendations**
- **Develop marketing/educational materials to notify public about the plan**

**Communications with Stakeholders!**



Baker

# Kettering Foundation Research Update

Michael Pompili, MSE, RS



## Plan for Evacuation of the Transportation Needs Populations of Central Ohio

Questions ?

