



Mid-Ohio Regional
Planning Commission



2050 LAND USE FORECAST

DECEMBER 2018

2020-2050 COLUMBUS AREA METROPOLITAN TRANSPORTATION PLAN

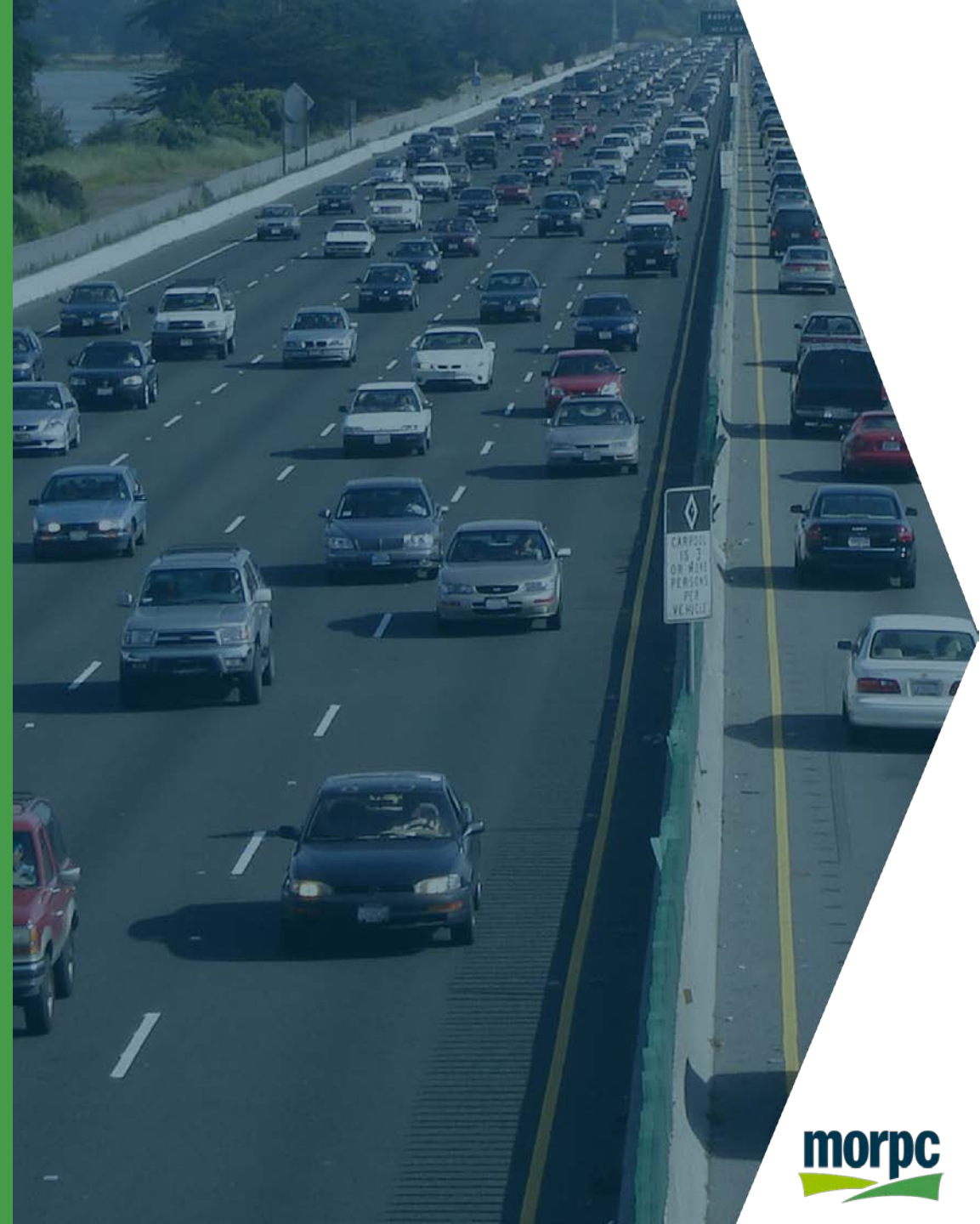


WHAT ARE WE ASKING OF YOU TODAY?

- Information only, no action required

WHY IS THE MTP IMPORTANT?

- The guiding long range document for the region's transportation system
 - *Estimates the travel needs 20-30 years in the future*
 - *Encompasses each community's transportation plans*
 - *Encompasses ODOT's activities*
 - *Meshes community and ODOT's activities into comprehensive strategy to address the travel needs of the region*
 - *Support other community and regional initiatives related to the transportation system*
 - *Transportation projects must be in MTP to be eligible for federal funding*





GOALS

THROUGH TRANSPORTATION:

REDUCE PER CAPITA ENERGY CONSUMPTION AND PROMOTE ALTERNATIVE FUEL RESOURCES TO INCREASE AFFORDABILITY AND RESILIENCE OF REGIONAL ENERGY SUPPLIES



PROTECT NATURAL RESOURCES AND MITIGATE INFRASTRUCTURE VULNERABILITIES TO MAINTAIN A HEALTHY ECOSYSTEM AND COMMUNITY



POSITION CENTRAL OHIO TO ATTRACT AND RETAIN ECONOMIC OPPORTUNITY TO PROSPER AS A REGION AND COMPETE GLOBALLY



CREATE SUSTAINABLE NEIGHBORHOODS TO IMPROVE RESIDENTS' QUALITY OF LIFE



INCREASE REGIONAL COLLABORATION AND EMPLOY INNOVATIVE TRANSPORTATION SOLUTIONS TO MAXIMIZE THE RETURN ON PUBLIC EXPENDITURES



USE PUBLIC INVESTMENTS TO BENEFIT THE HEALTH, SAFETY, AND WELFARE OF PEOPLE



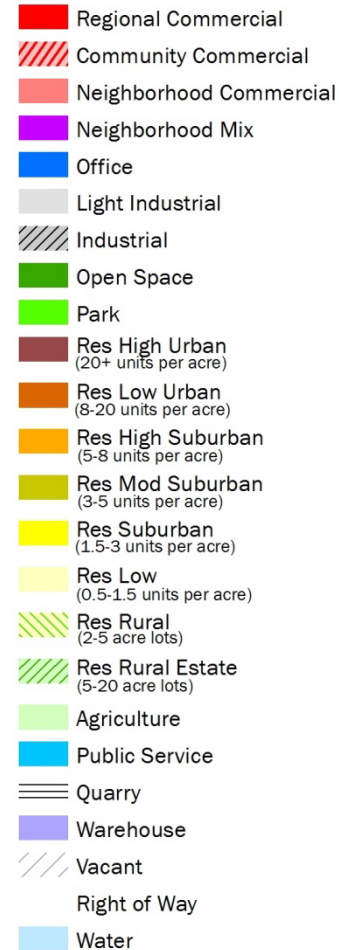
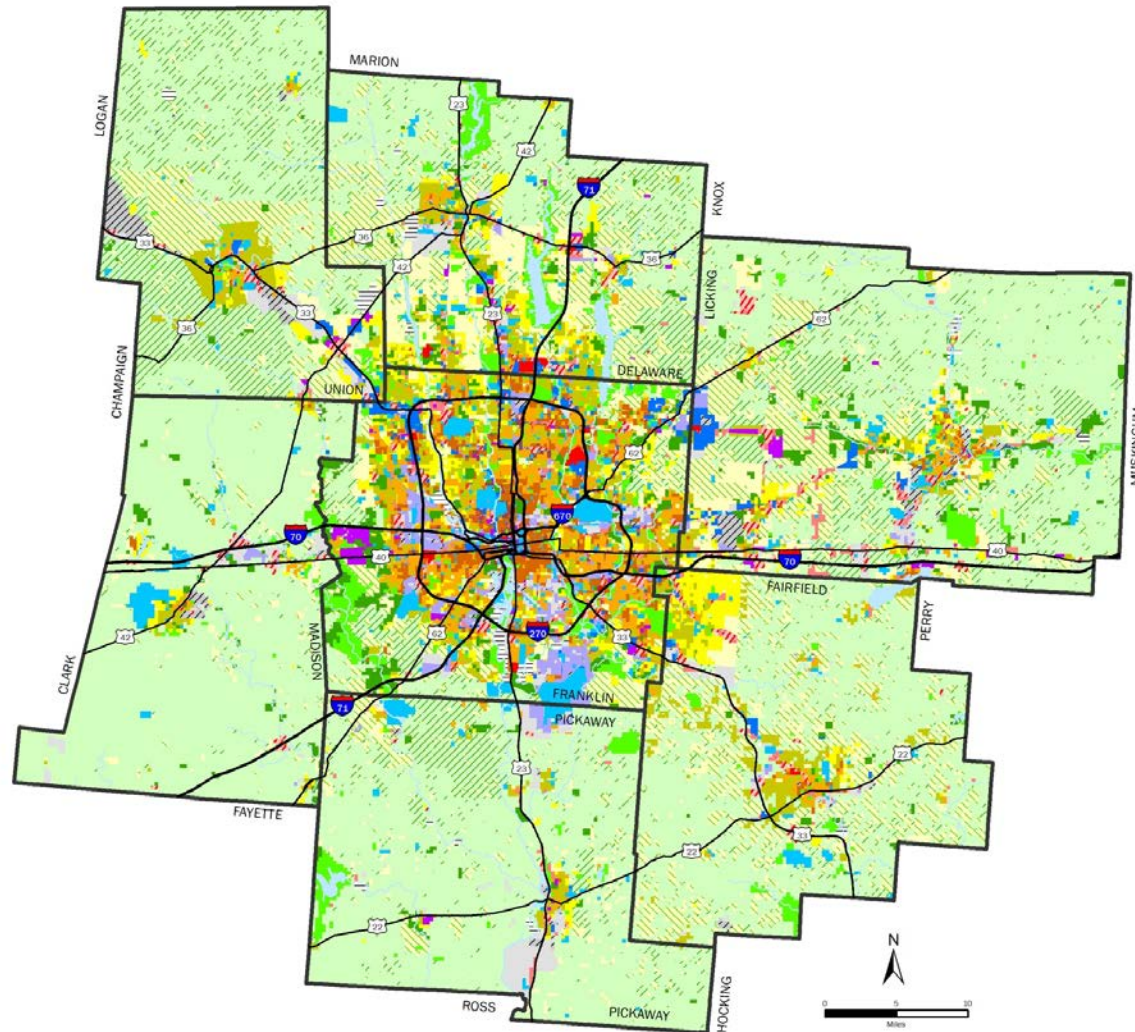
2050 LAND USE FORECAST

- Estimate travel needs 20-30 years in the future
 - *Based upon where people live and work*
- Update existing and future land use for region
- Estimate current (2018) population & employment
- Develop population & employment projections to serve as countywide control totals
- Distribute future population & employment to sub-county areas using Land Use Allocation Model





Updated Existing & Future Land Use



Based On:

- Auditors' parcel data
- Development activity
- Building permits
- Local land use plans
- Updated aerial imagery



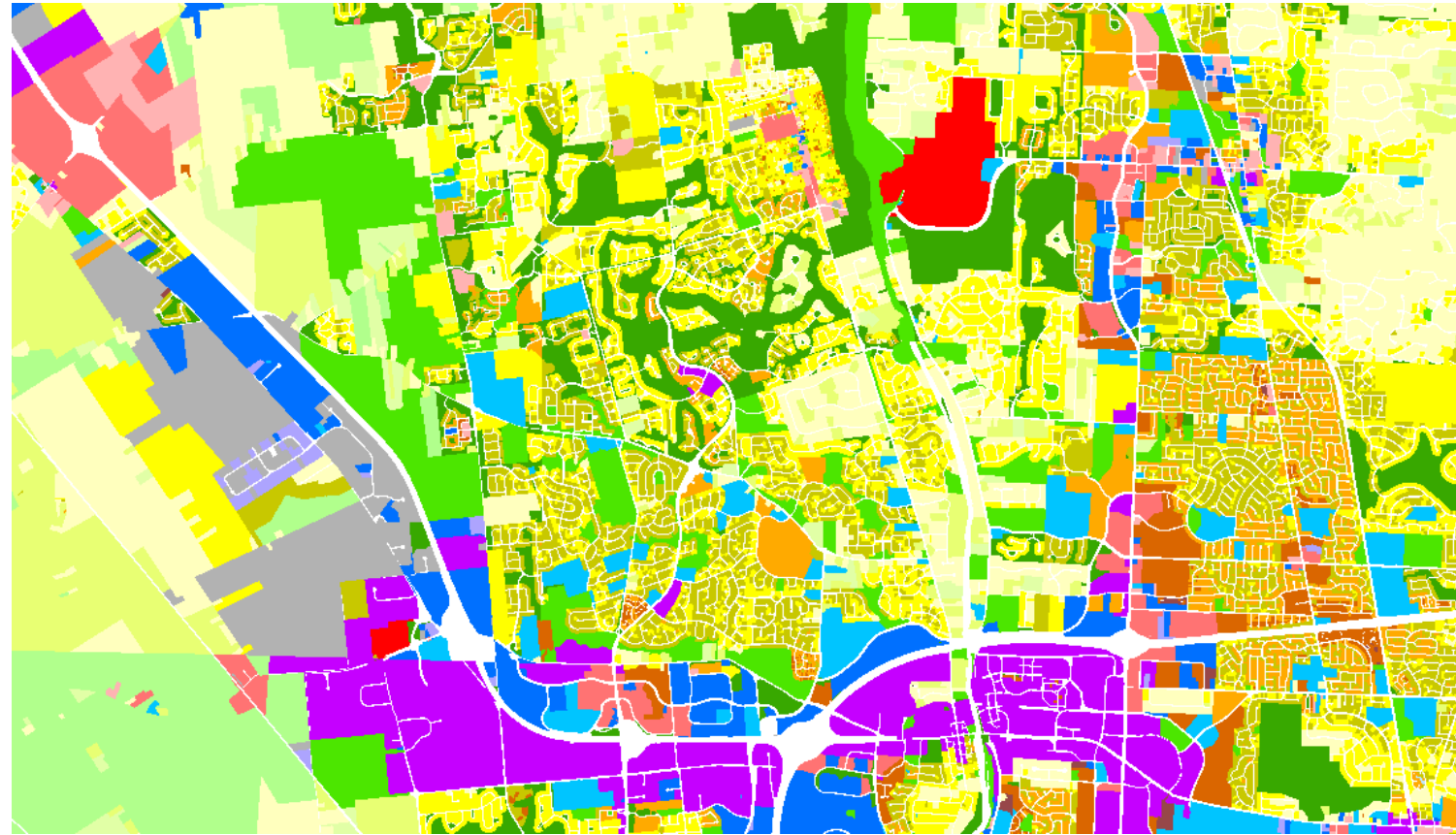
Community Review of Land Use Updates

EXISTING AND FUTURE LAND USE REVIEW

Created a web map where communities could review, edit or comment on land use assignments

Local input was reviewed internally and incorporated.

GIS files were provided to agencies with the appropriate software.





Calculating Base Data: 2018 Population and Employment

- ☒ BLKS2010_POPHH
- ☐ BlockHH_RESparcel_GT_intersect
- ☐ BlockHH_RESparcel_intersect
- ☐ <all other values>
- ☐ RESacre
- ☐ 0
- ☒ parc_dissolve_res
- ☐ COUNTIES_7cnty_odot
- ☒ Street Centerlines LBRS



Based On:

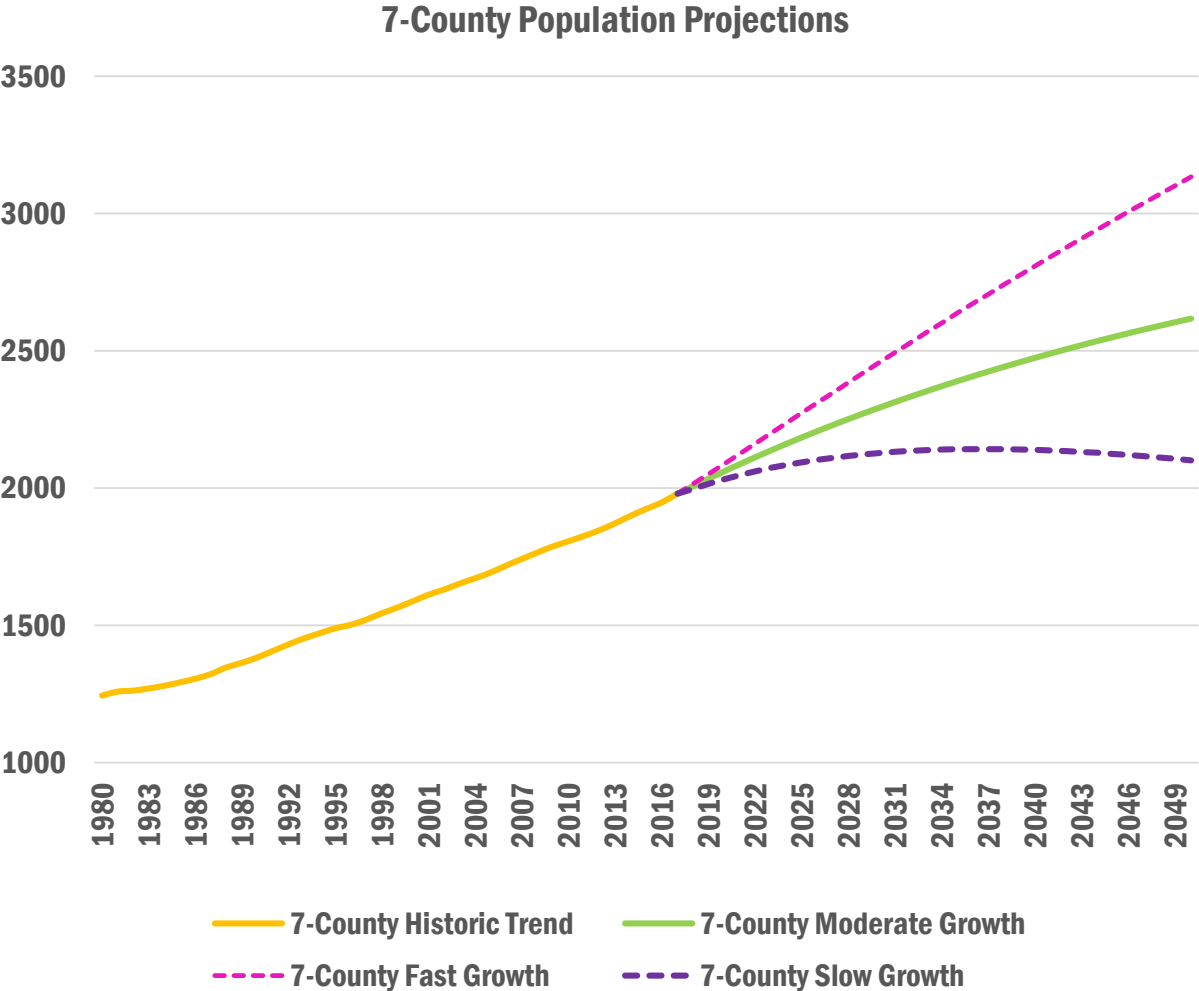
- Parcel Land Use
- Census Data
- Points of Interest
- Building Permits
- QCEW (State employment data)
- Local Knowledge

- ☒ Super Secret Employer Data
- ☐ <all other values>
- ☐ VARTYPE
- ☐ Industrial
- ☐ Office
- ☐ Other
- ☐ Retail Goods
- ☐ Retail Service
- ☐ Eblob_Intersect
- ☐ parc_dissolve_emp
- ☐ Neighborhood Mix
- ☐ Regional Commercial
- ☐ Community Commercial
- ☐ Neighborhood Commercial
- ☐ Office
- ☐ Light Industrial
- ☐ Industrial
- ☐ Warehouse
- ☐ Education
- ☐ Higher Education
- ☐ Government
- ☐ Airport
- ☐ Correctional Facility
- ☐ Hospital
- ☐ Religious Facility
- ☐ Rail Yard
- ☐ Utility





Population Projections (2050)



County control totals for 2050

7-COUNTIES IN 2050:

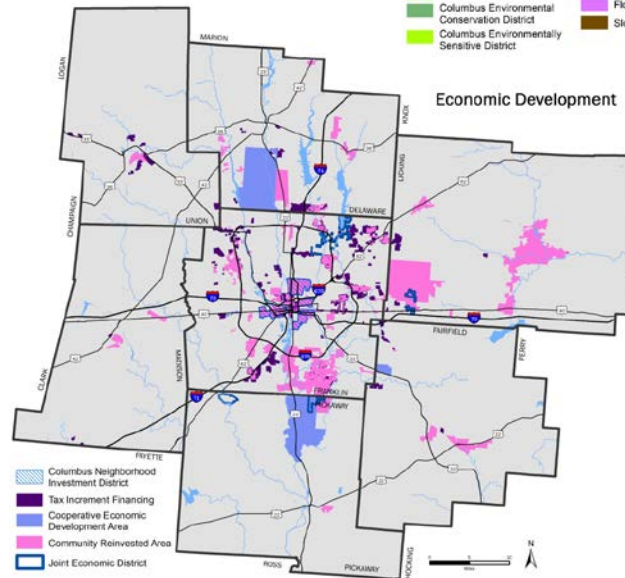
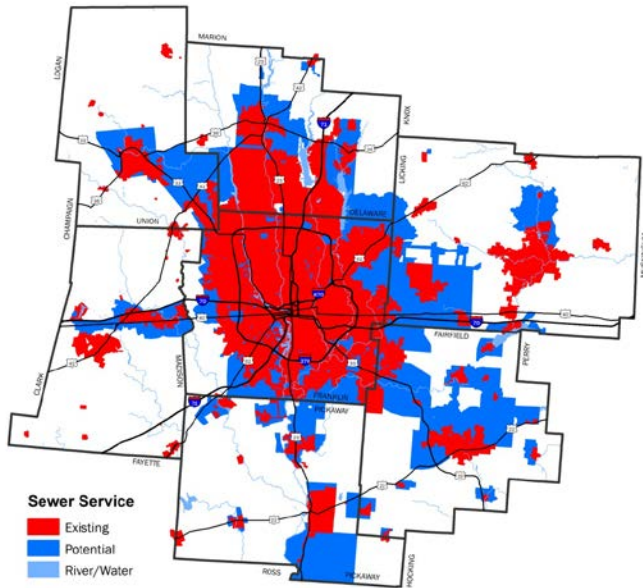
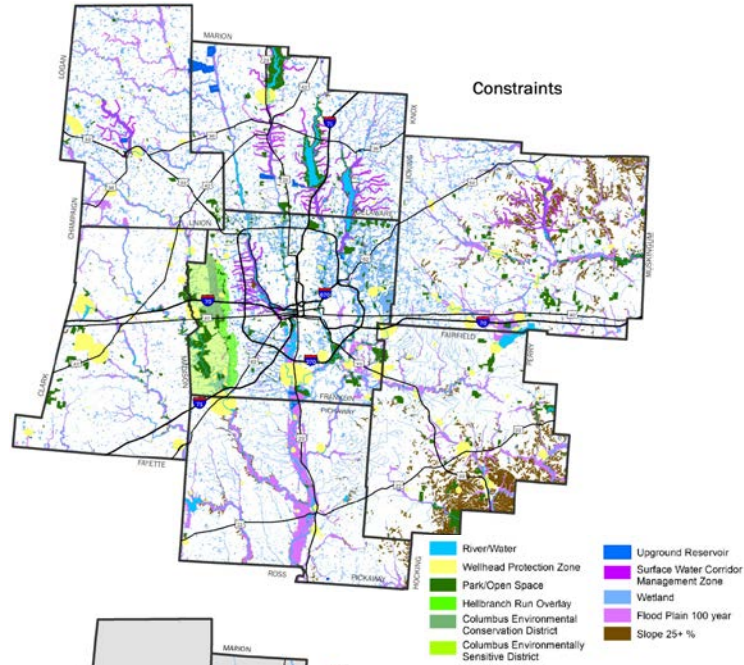
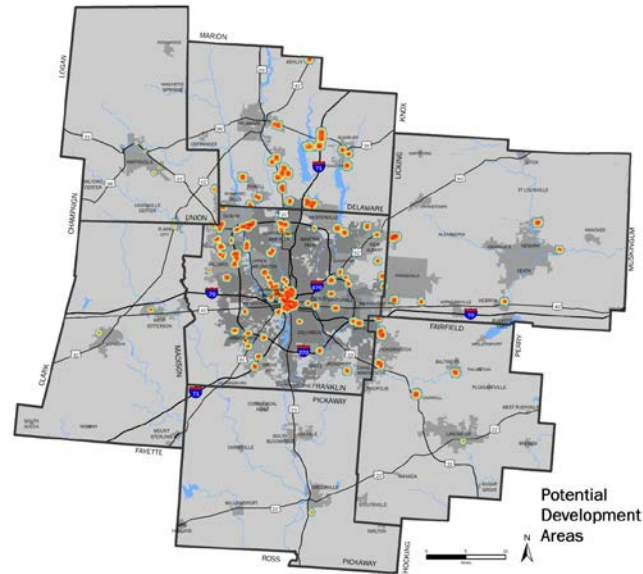
2.6 M. PEOPLE

- 550K MORE PEOPLE

1.0 M. HOUSEHOLDS

- 220K MORE HOUSEHOLDS

2020-2050 COLUMBUS AREA METROPOLITAN TRANSPORTATION PLAN

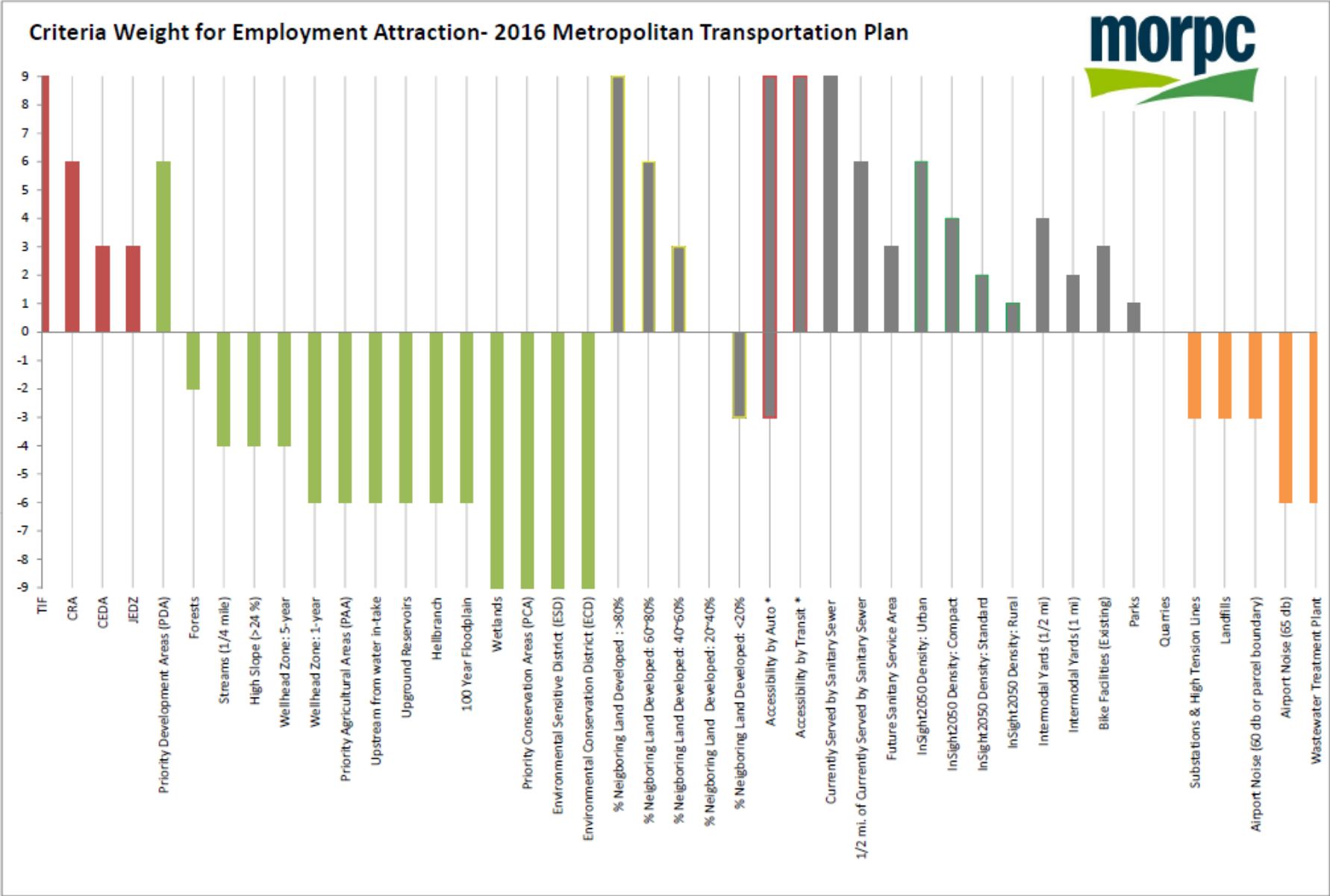


Next Steps

More Model Inputs:

- Finalize employment and MPO-level population projections
- Infrastructure & known development areas
- Environmental constraints & economic development

2020-2050 COLUMBUS AREA METROPOLITAN TRANSPORTATION PLAN

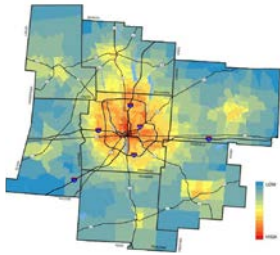


Attractiveness factors, or weights, are estimated for both households and employment, to help the model distribute people and jobs in the future.



LAND USE ALLOCATION MODEL

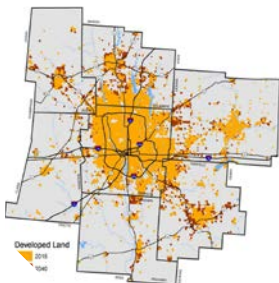
A THREE-STEP PROCEDURE



Step 1: Determine an Attractiveness Score of Each GridMAZ for Future Development



Step 2: Estimate Its Capacity of Each GridMAZ for Future Development

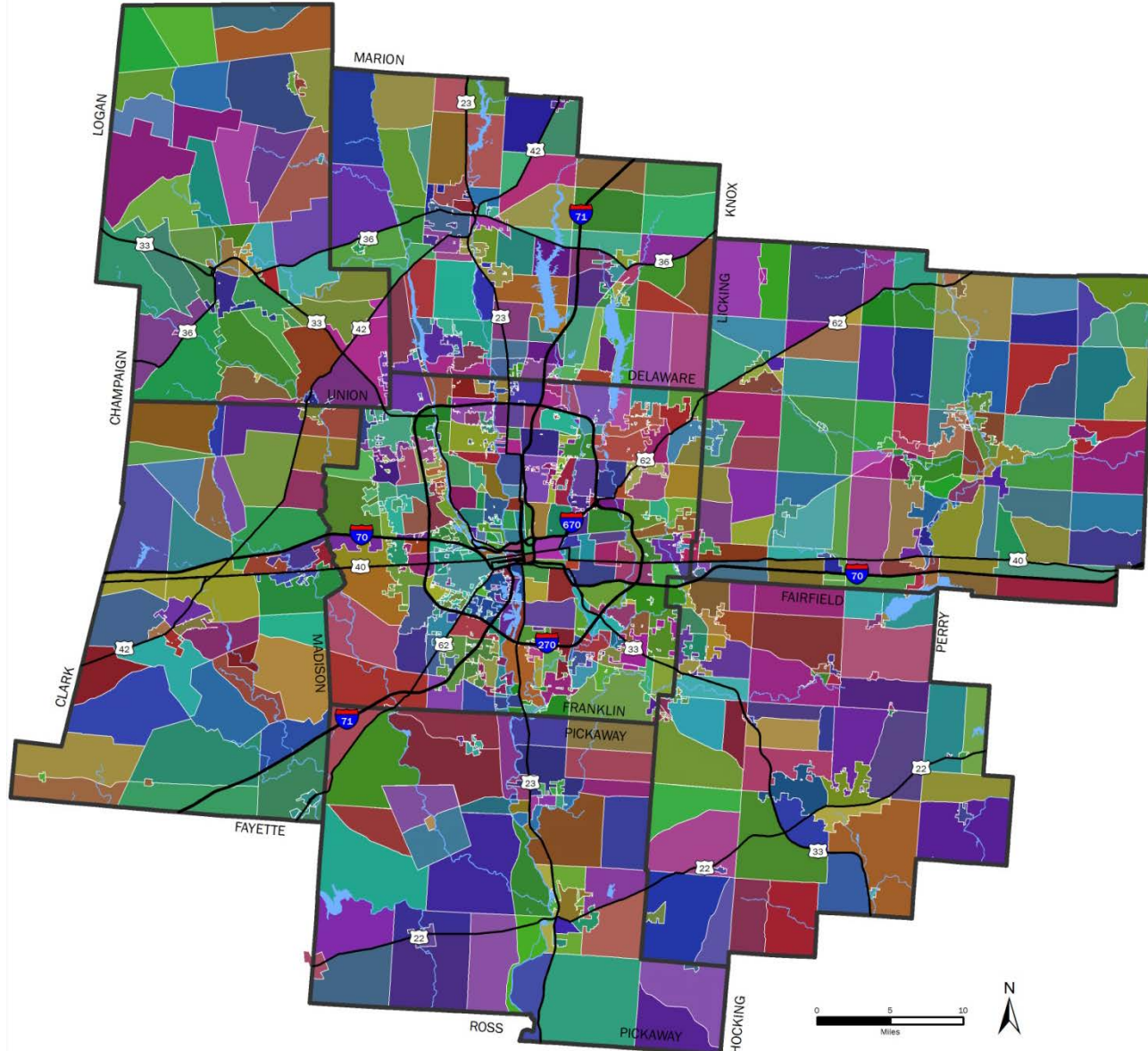


Step 3: Distribute/Allocate Future Development to GridMAZs Based on Their Attractiveness



Model Output Review

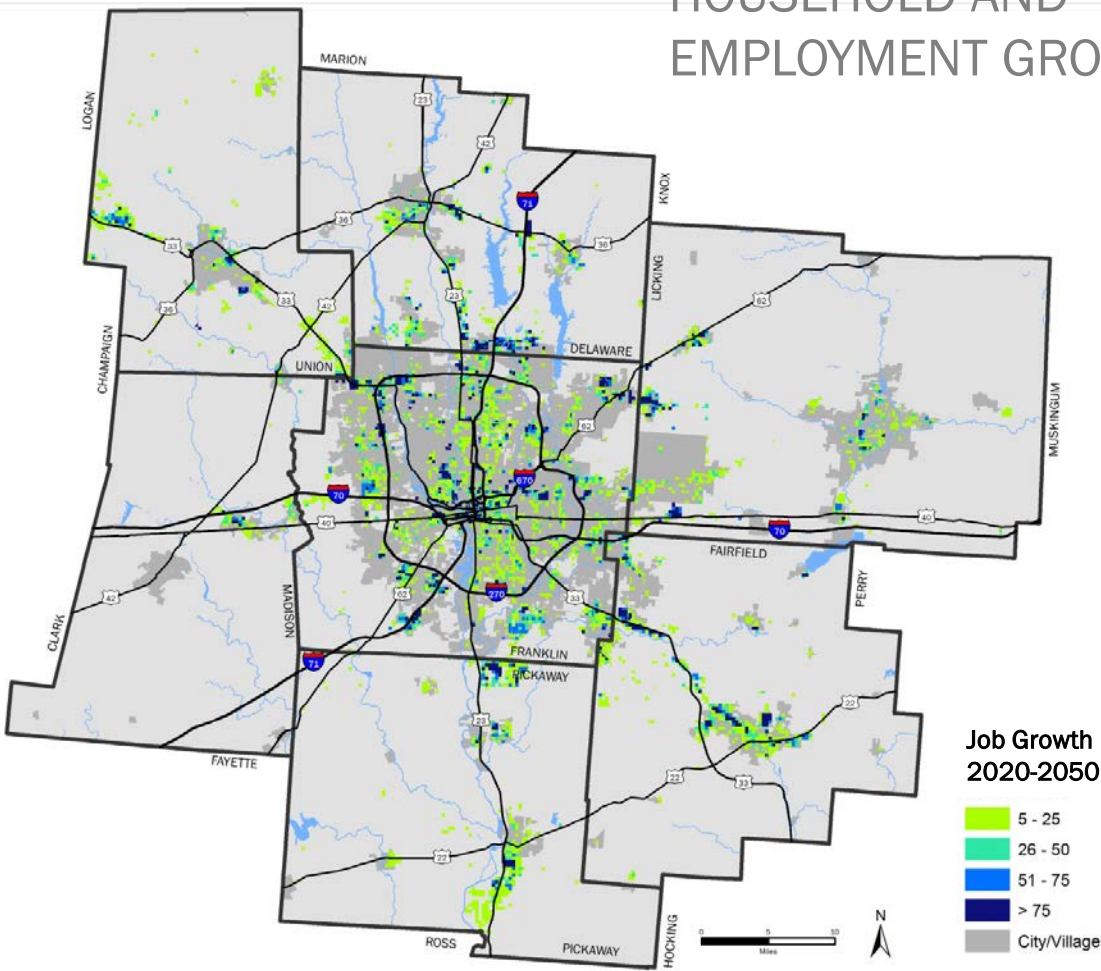
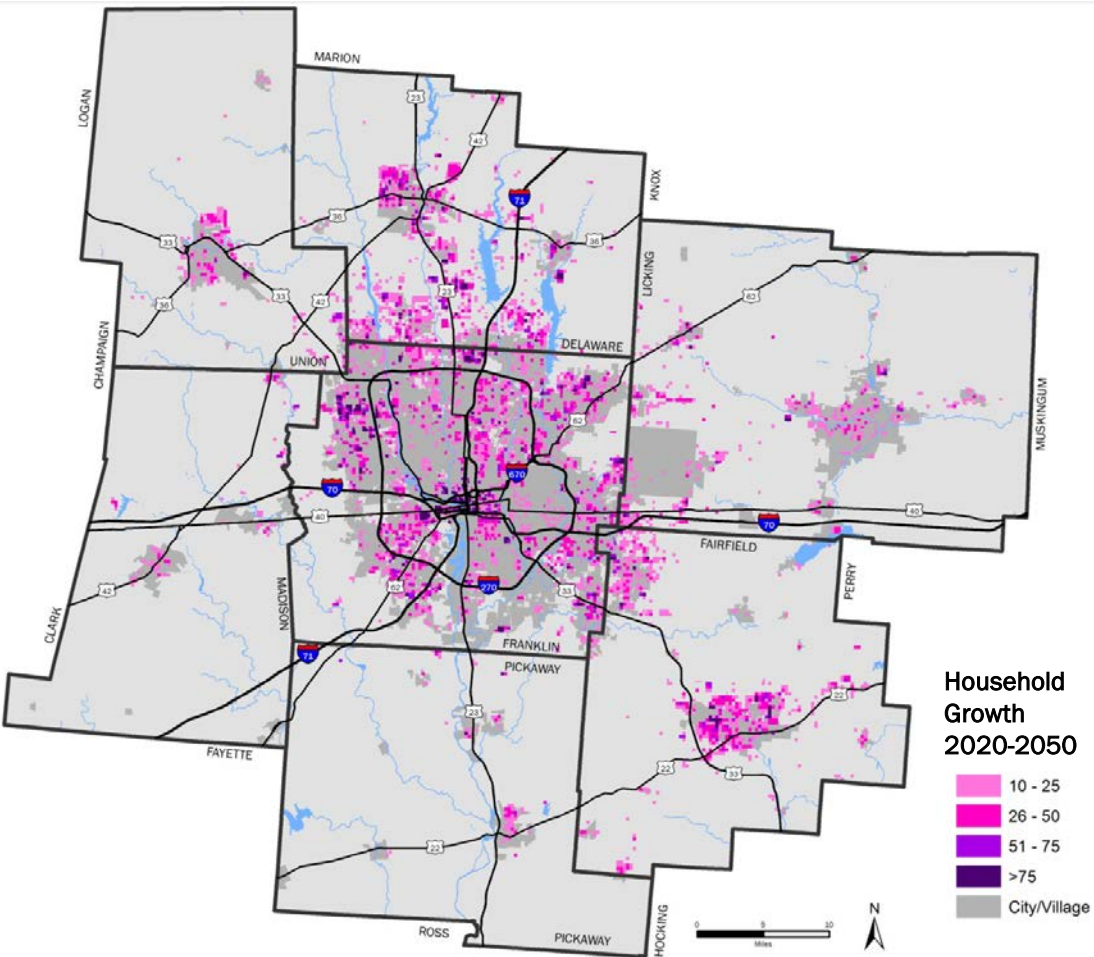
Communities will have an opportunity to review the final model outputs, summarized to larger geographies.





Model Results

DISTRIBUTION OF NEW
HOUSEHOLD AND
EMPLOYMENT GROWTH



2020-2050 COLUMBUS AREA METROPOLITAN TRANSPORTATION PLAN



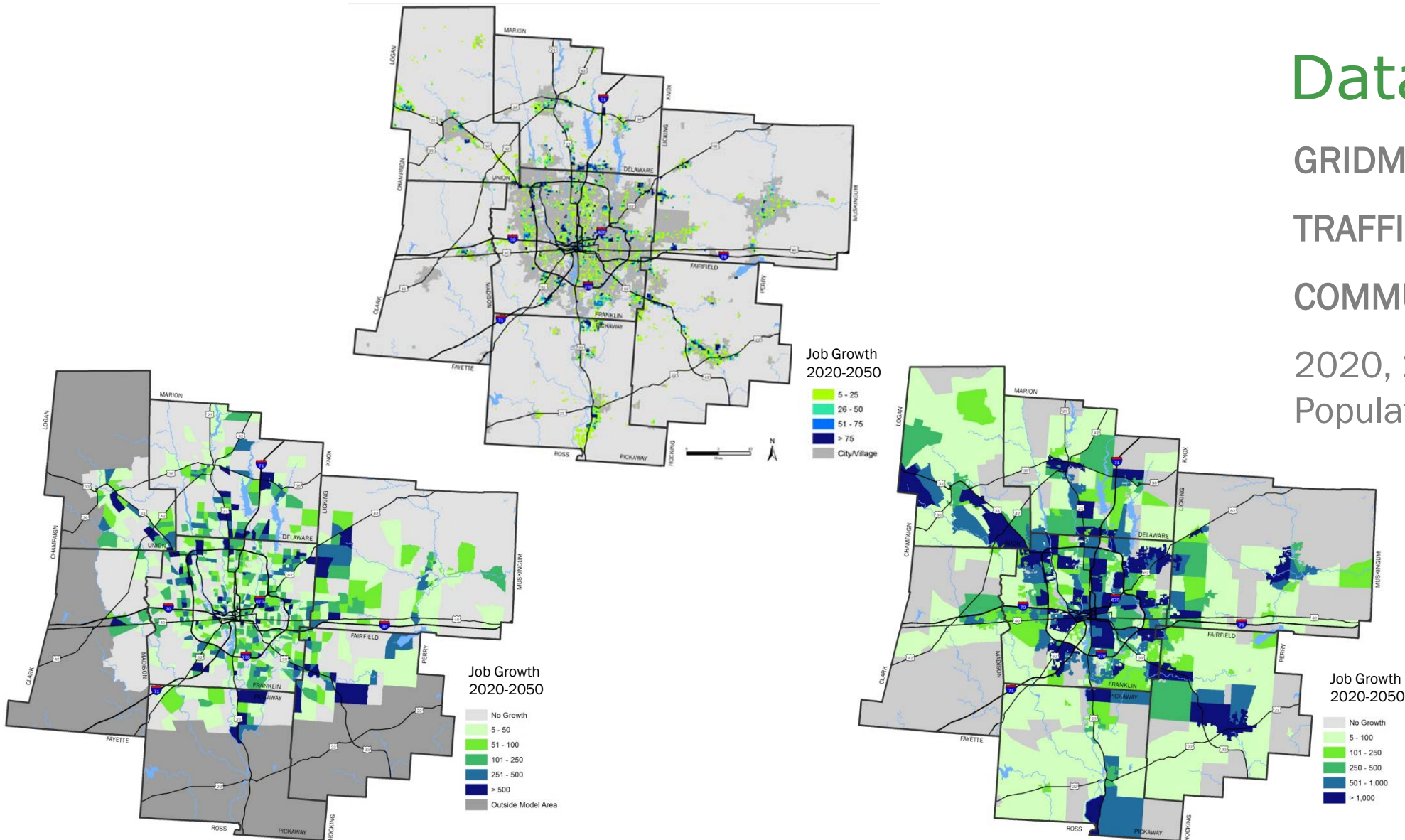
Data Outputs

GRIDMAZ

TRAFFIC ANALYSIS ZONES

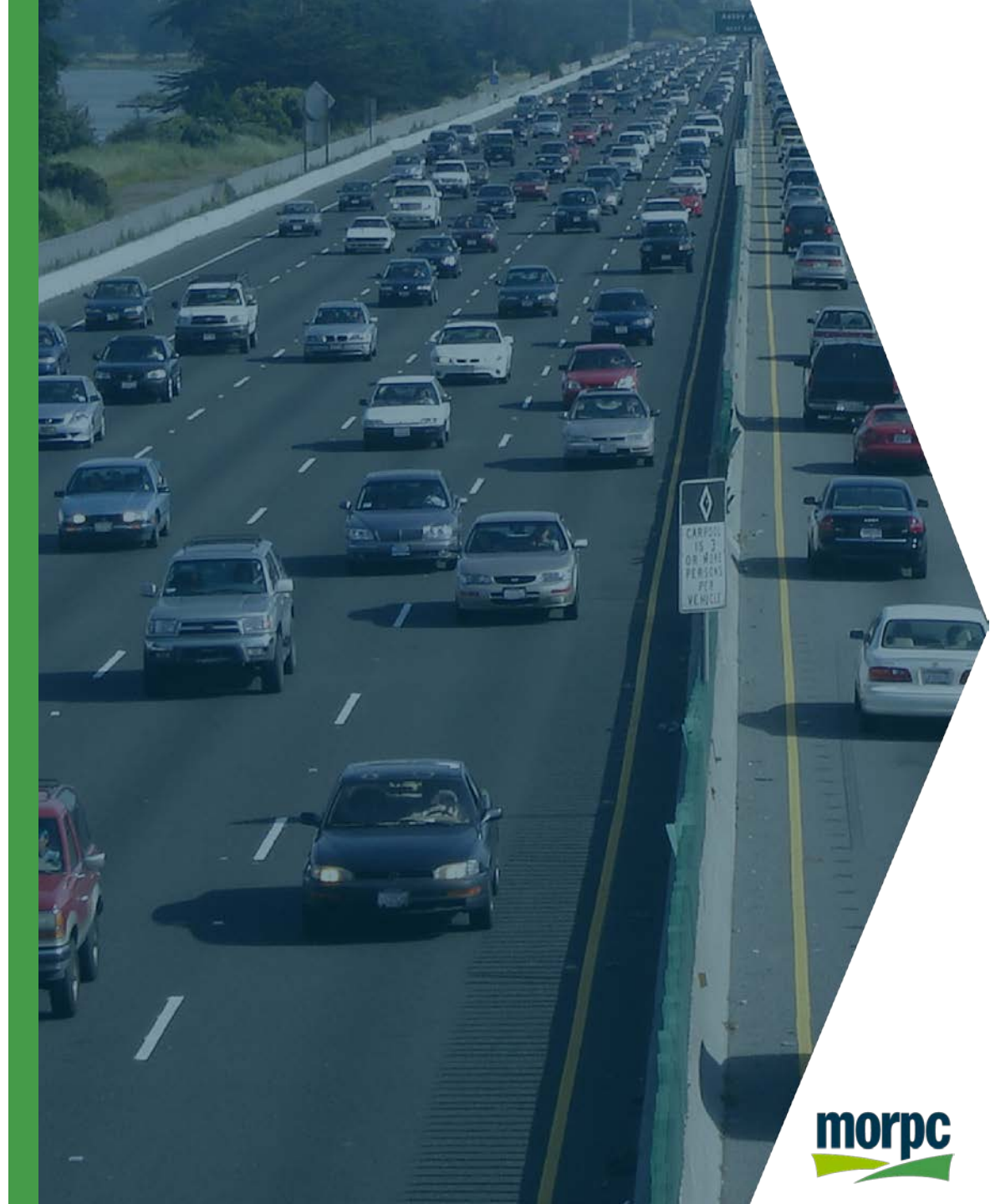
COMMUNITY SUB GROUPS

2020, 2030, 2040, 2050
Population, Households, Jobs



NEXT STEPS

- Convert land uses to households, people, employees
 - Allocate to sub-areas of region
- Review forecasts – comment period
- Adopt Population & Employment Forecasts
- Develop project evaluation criteria based upon objectives and performance measures





HOW DOES MY COMMUNITY AFFECT THIS?

- Provide feedback on land use and population/employment forecasts to ensure it reflects local vision and plans
- Forecasts will be presented for approval in early 2019



MARIA SCHAPER

TRANSPORTATION PLANNING MANAGER

MSCHAPER@morpc.org

P. 614.233.4153

AARON SCHILL

*DIRECTOR,
REGIONAL DATA & MAPPING*

ASCHILL@morpc.org

P. 614.233.4154

111 Liberty Street, Suite 100
Columbus, OH 43215

www.morpc.org