

# COVID-19

## *Regional Transportation System Impacts*



MID-OHIO REGIONAL  
**MORPC**  
PLANNING COMMISSION

# IMPACT TRACKING



MORPC

- Highway
- Air Travel
- Transit
- Trails
- Air Quality

# HIGHWAY

## COVID-19

### *Regional Transportation System Impacts*

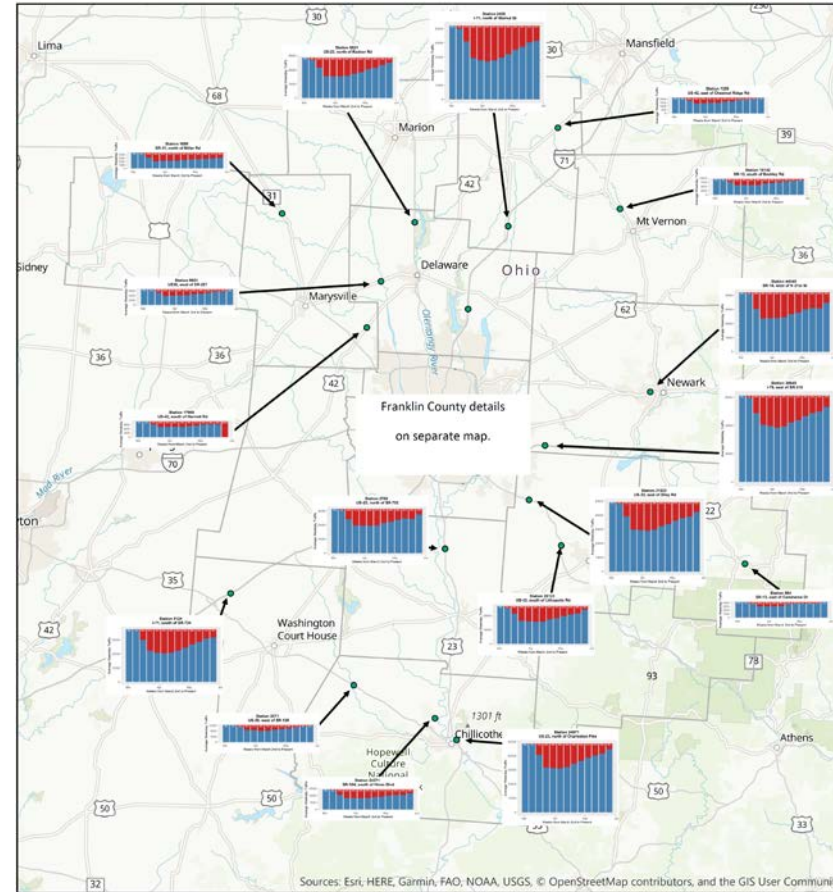
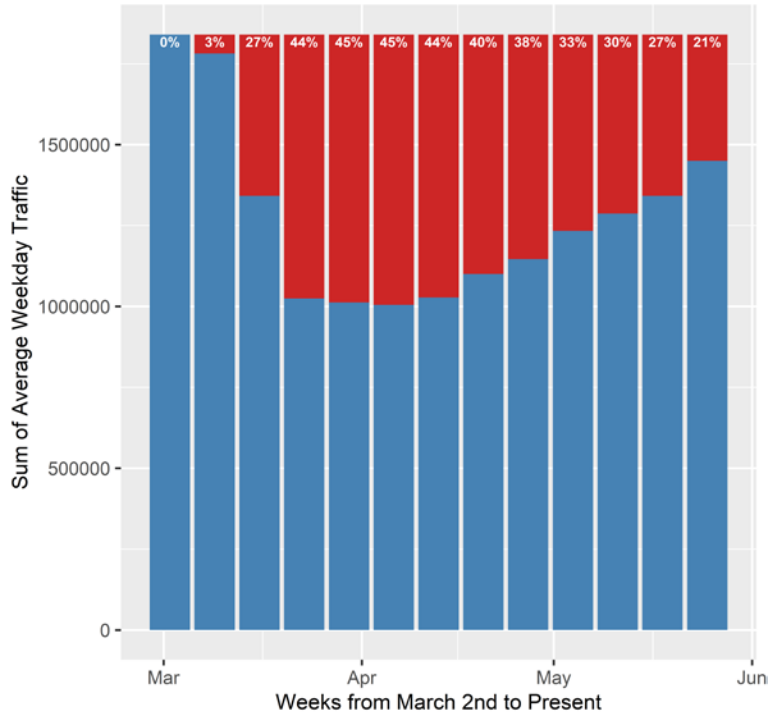


MID-OHIO REGIONAL  
**MORPC**  
PLANNING COMMISSION

# Weekday Average Daily Traffic

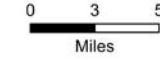
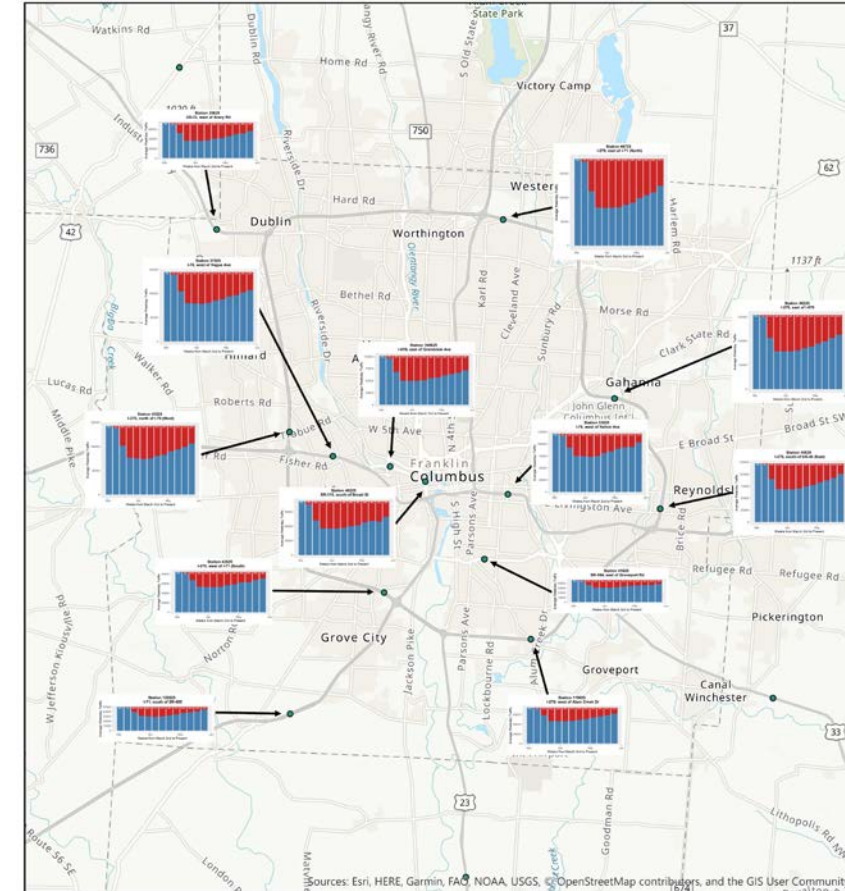
**15 County Region: Average Weekday Traffic Volumes and  
Percent Reduction from 1st week of March**  
Week of March 2 through Present

**All Stations in 15 Counties**



The information shown on this map is compiled from various sources made available to us which we believe to be reliable.  
D:\COVID\_DASH\COVID19\_Mapping\ArcProMapTemplates.aprx  
18-May-20  
Data source: ODOT TDMS TMC

**Franklin Co: Weekly Average Traffic Volume and  
Percent Reduction from 1st Week of March**  
Week of March 2 through Present



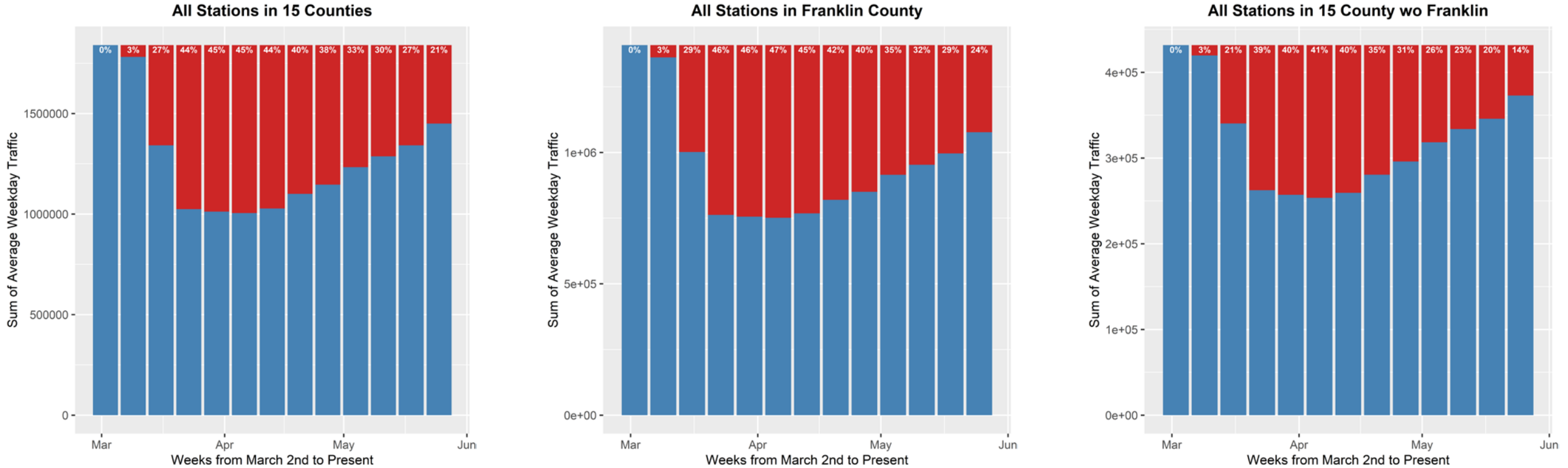
The information shown on this map is compiled from various sources made available to us which we believe to be reliable.  
D:\COVID\_DASH\COVID19\_Mapping\ArcProMapTemplates.aprx  
18-May-20  
Data source: ODOT TDMS TMC

Data source: ODOT TDMS TMC

Data is based on 29 ODOT Permanent count stations throughout 15 counties in central Ohio

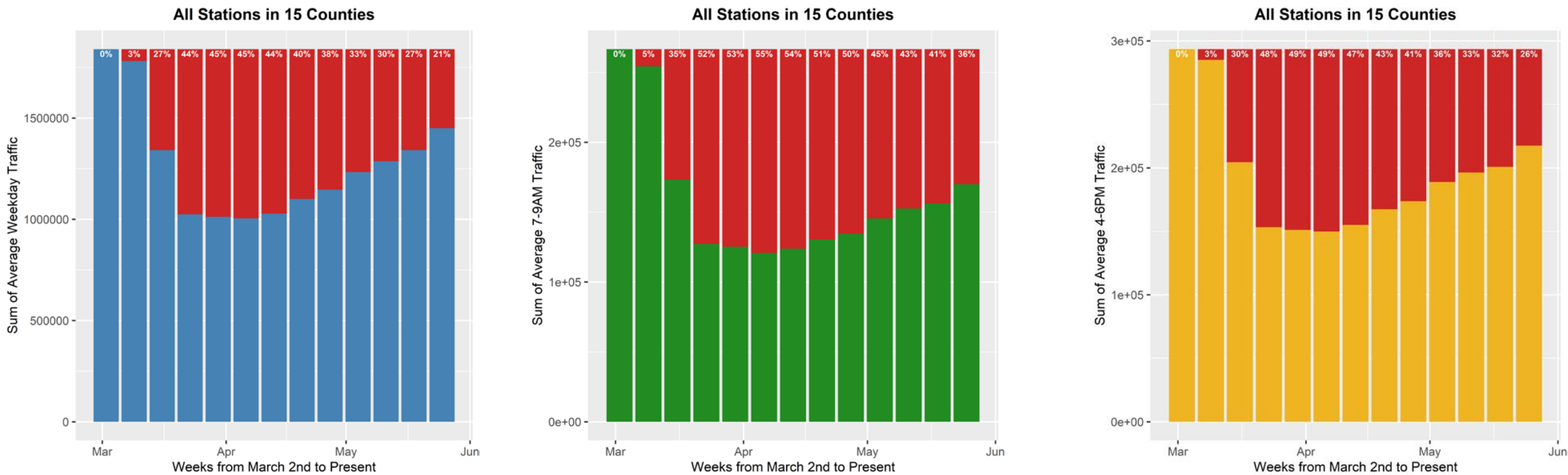
See Individual Maps

# Weekday Average Daily Traffic



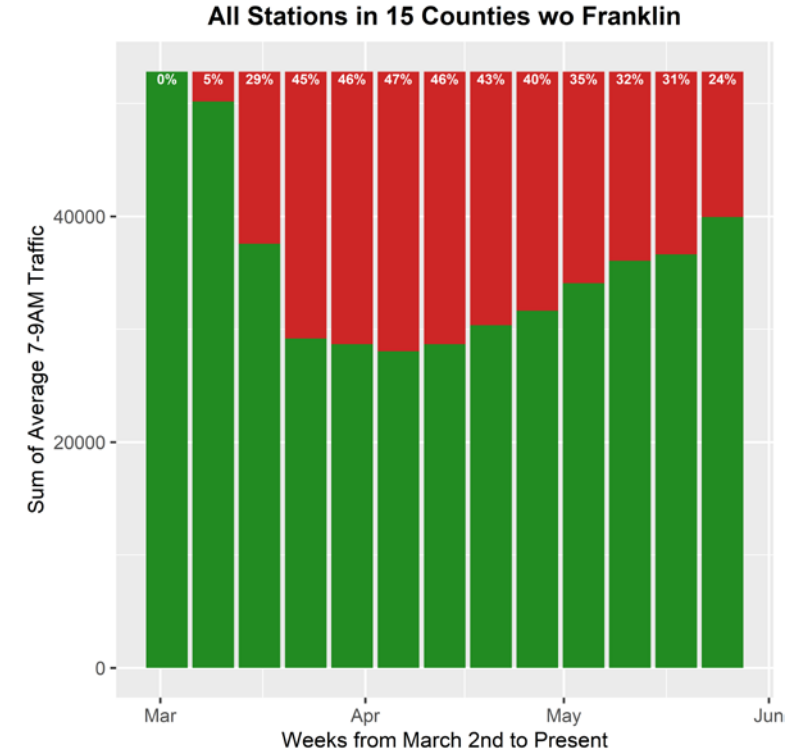
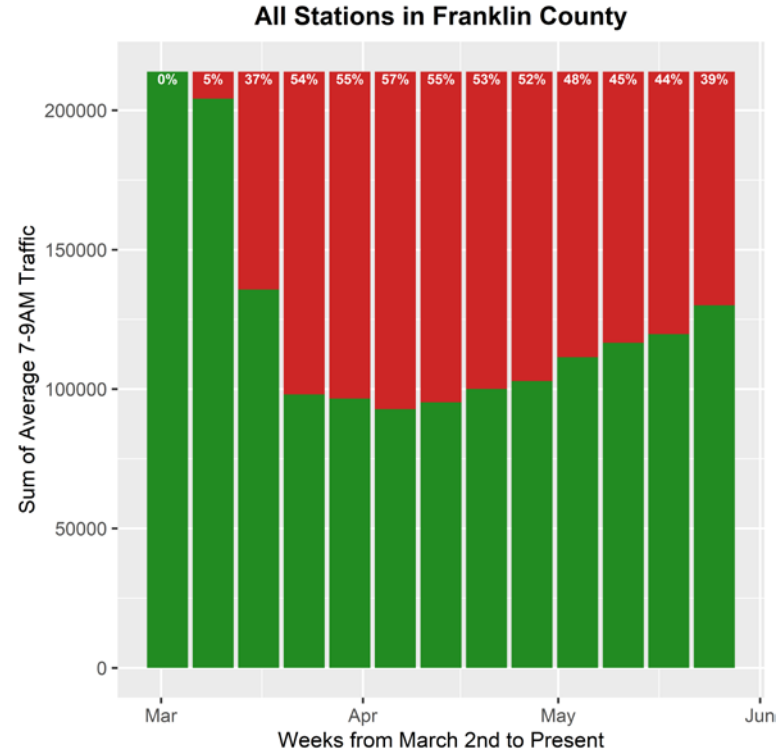
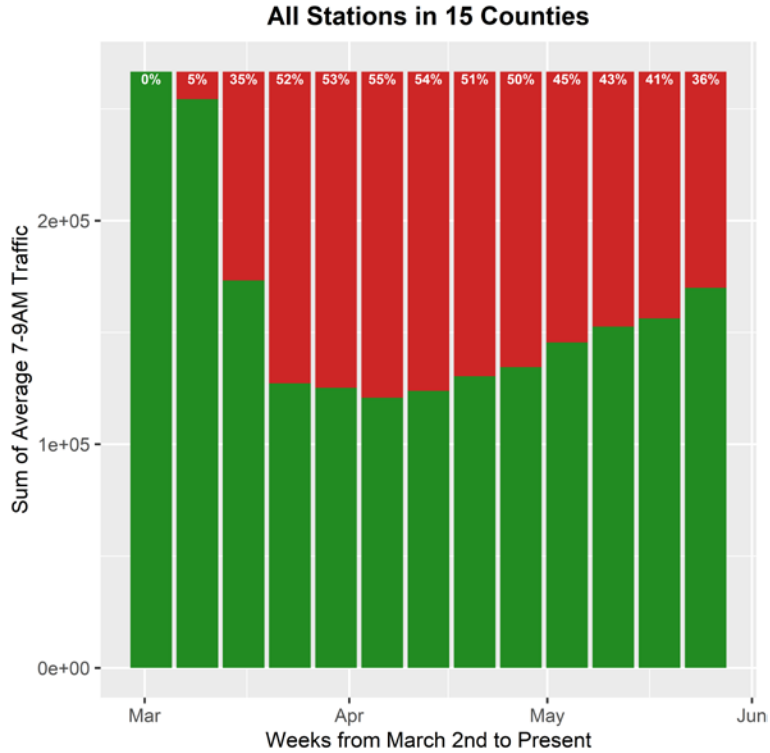
Data is based on 29 ODOT Permanent count stations throughout 15 counties in central Ohio

# Weekday - Average Daily Traffic – AM Period – PM Period



Data is based on 29 ODOT Permanent count stations throughout 15 counties in central Ohio

# Weekday AM Peak Period

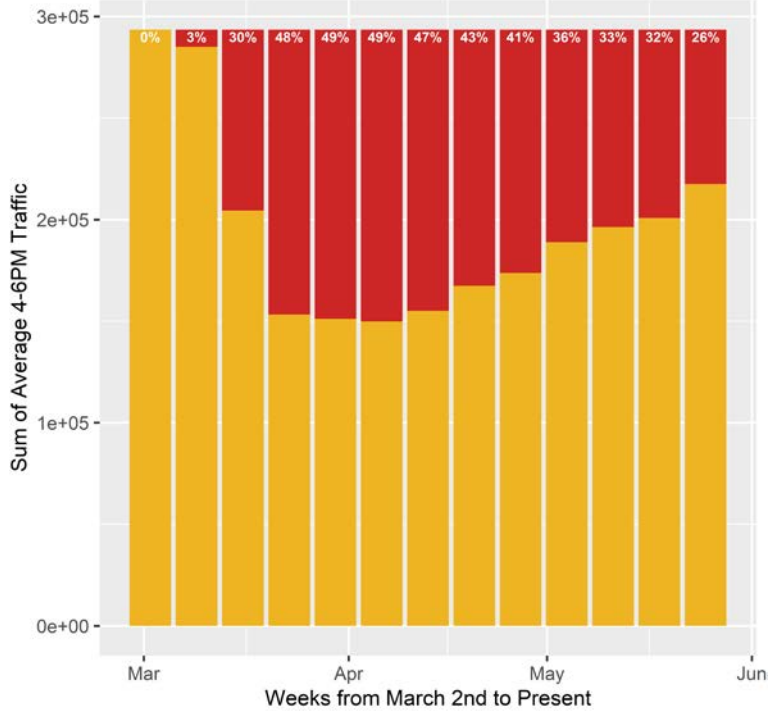


Data is based on 29 ODOT Permanent count stations throughout 15 counties in central Ohio

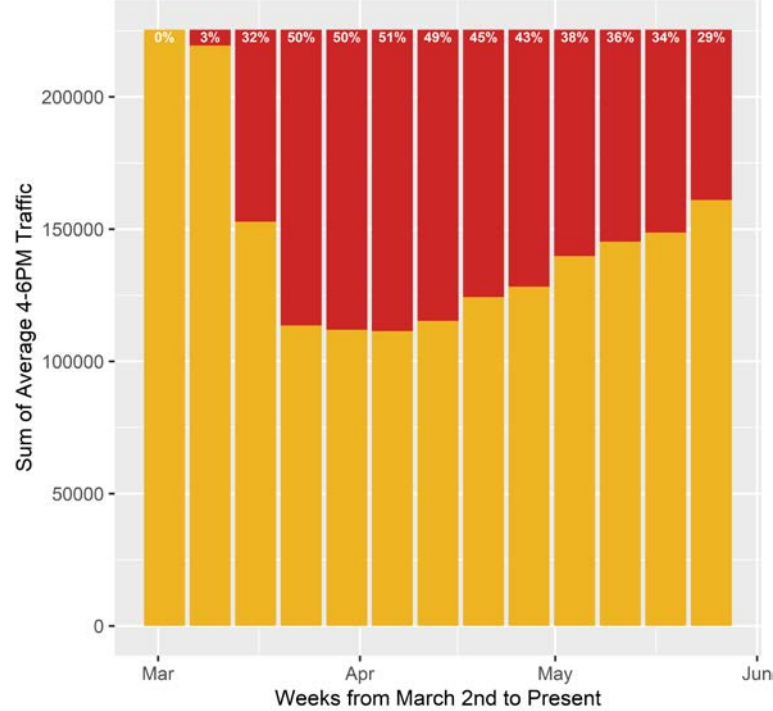


# Weekday PM Peak Period

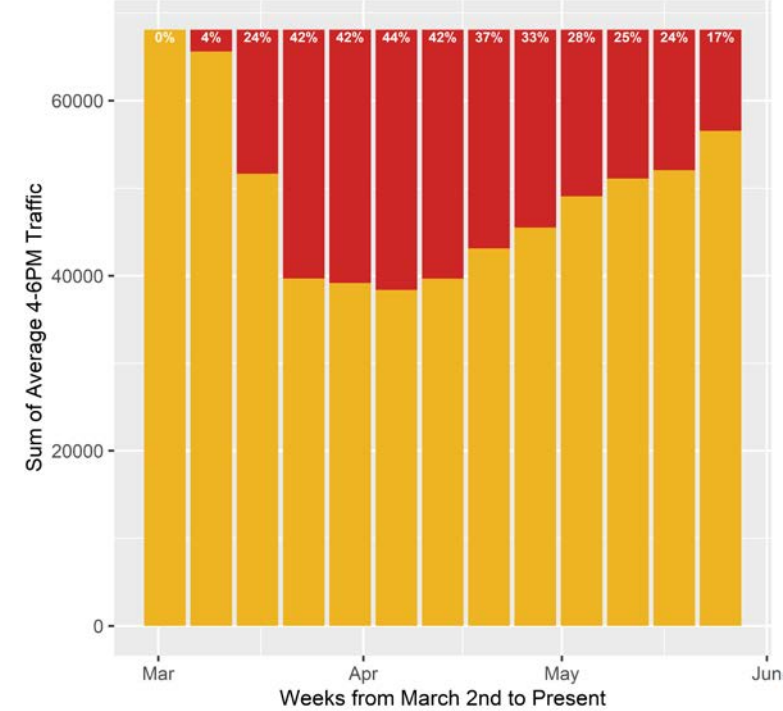
All Stations in 15 Counties



All Stations in Franklin County



All Stations in 15 Counties wo Franklin

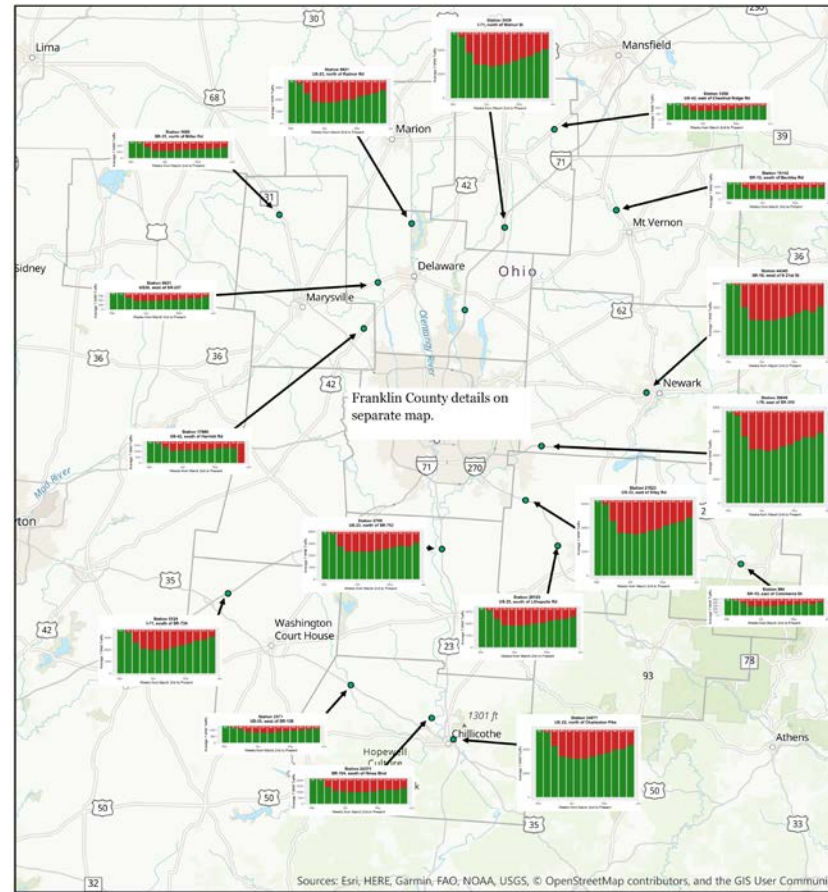
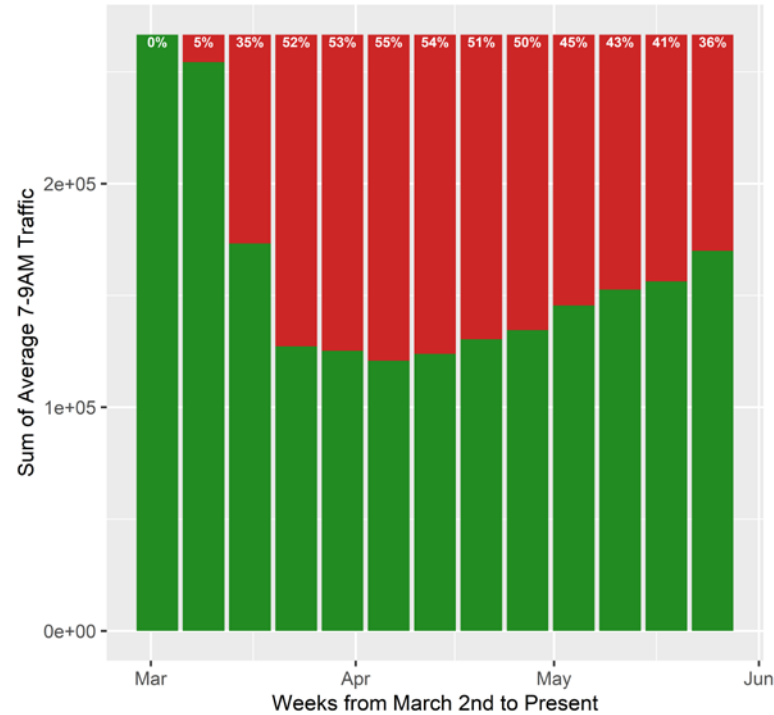


Data is based on 29 ODOT Permanent count stations throughout 15 counties in central Ohio

# Weekday Average 2 hour AM Peak Traffic

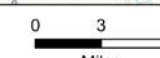
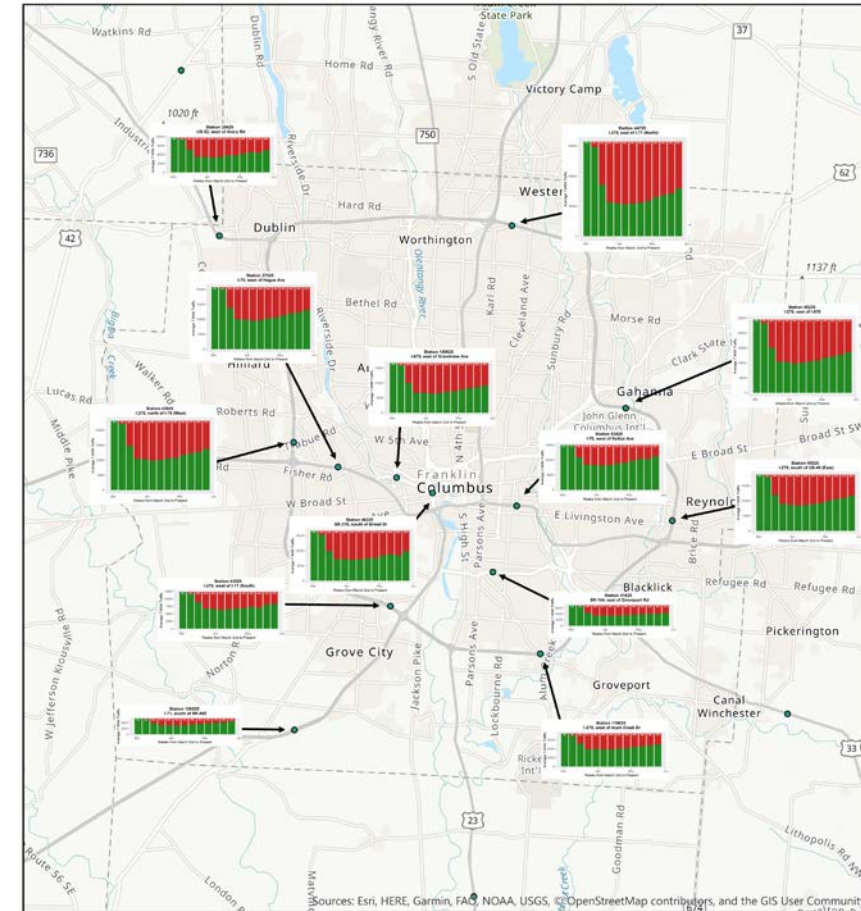
**15 County Region: AM PEAK Average Weekday Traffic Volumes  
and Percent Reduction from 1st week of March**  
Week of March 2 through Present

**All Stations in 15 Counties**



The information shown on this map is compiled from various sources made available to us which we believe to be reliable.  
D:\COVID\_DASH\COVID19\_Mapping\ArcProMapTemplates.aprx  
18-May-20  
Data source: ODOT TDMS TMC

**Franklin Co: AM PEAK Weekly Average Traffic Volume and  
Percent Reduction from 1st week of March**  
Week of March 2 through May 18

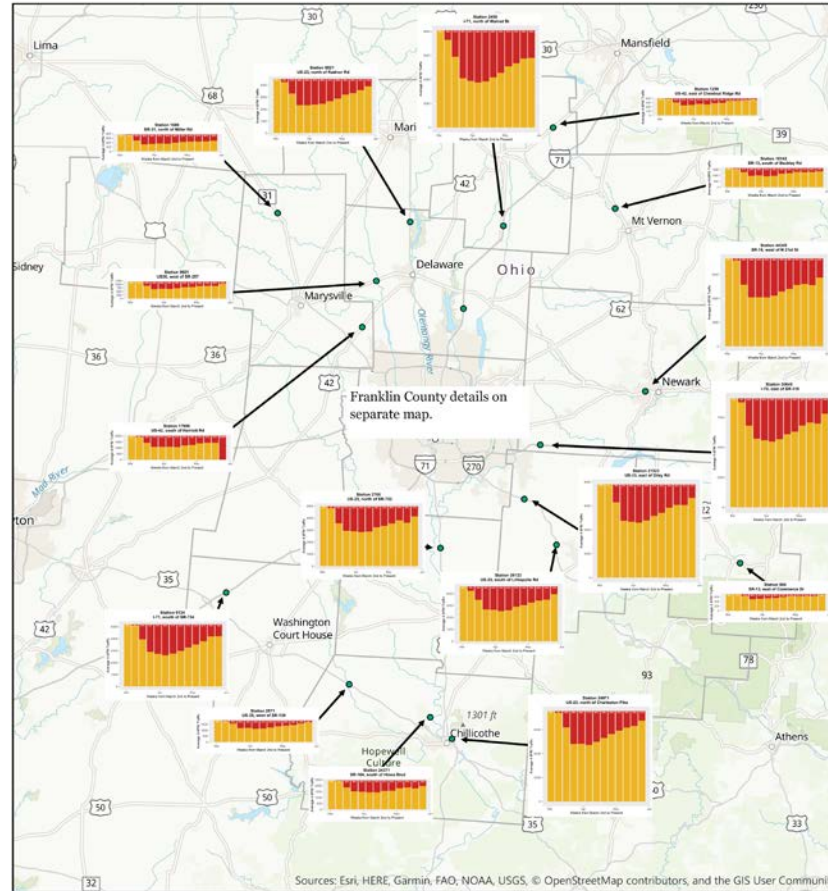
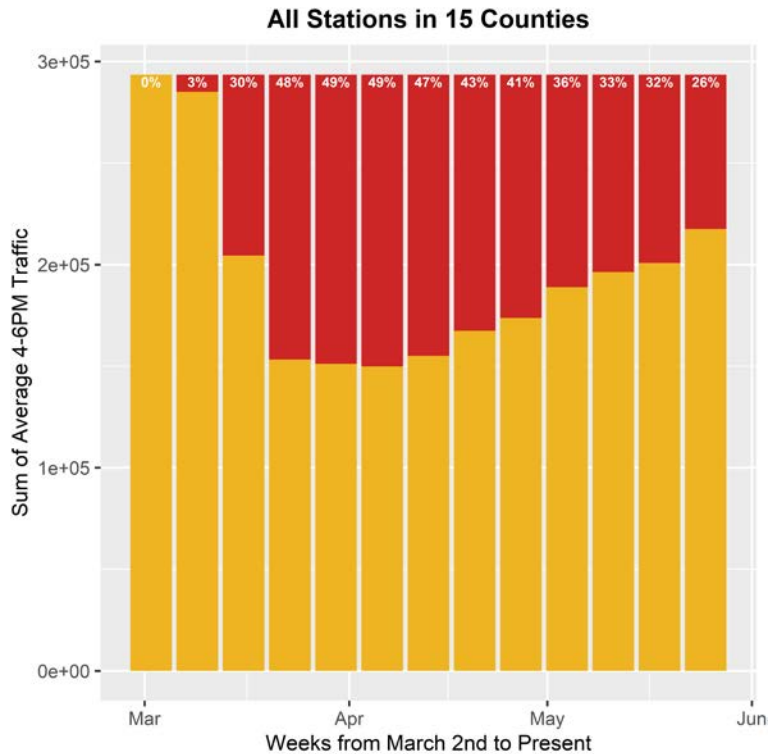


The information shown on this map is compiled from various sources made available to us which we believe to be reliable.  
D:\COVID\_DASH\COVID19\_Mapping\ArcProMapTemplates.aprx  
18-May-20



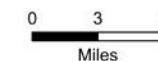
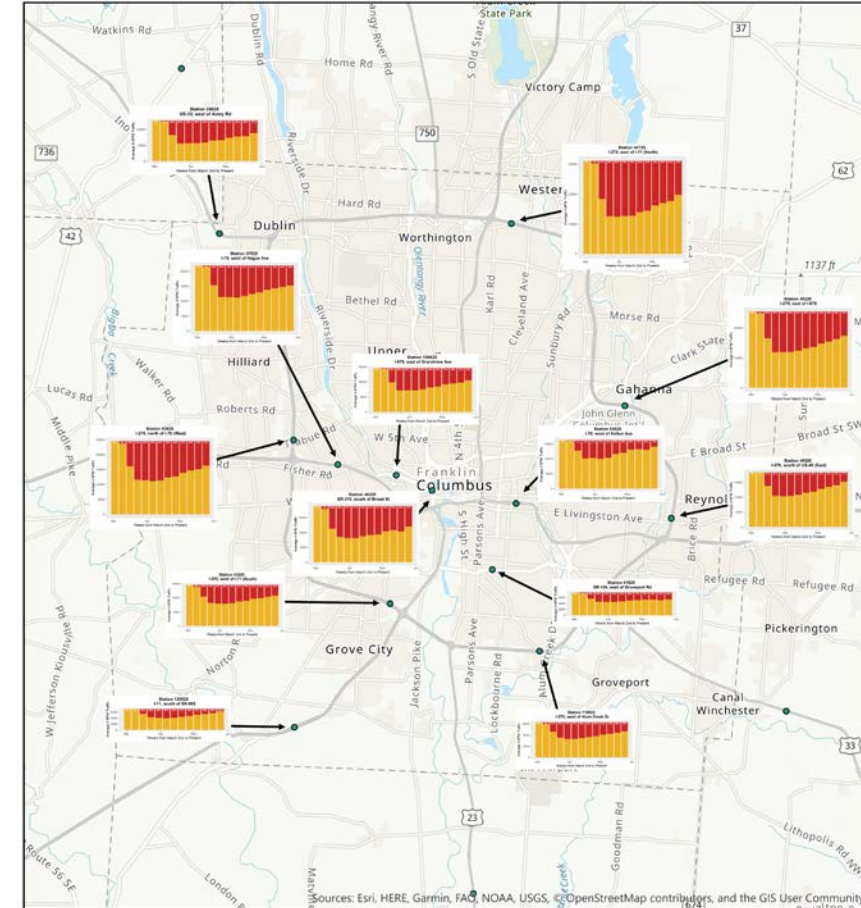
# Weekday Average 2 hour PM Peak Traffic

**15 County Region: AM PEAK Average Weekday Traffic Volumes  
and Percent Reduction from 1st week of March**  
Week of March 2 through Present



The information shown on this map is compiled from various sources made available to us which we believe to be reliable.  
D:\COVID\_DASH\COVID19\_Mapping\ArcProMapTemplates.aprx  
18-May-20  
Data source: ODOT TDMs TMC

**Franklin Co: PM PEAK Weekly Average Traffic Volume and  
Percent Reduction from 1st week of March**  
Week of March 2 through May 18



The information shown on this map is compiled from various sources made available to us which we believe to be reliable.  
D:\COVID\_DASH\COVID19\_Mapping\ArcProMapTemplates.aprx  
18-May-20

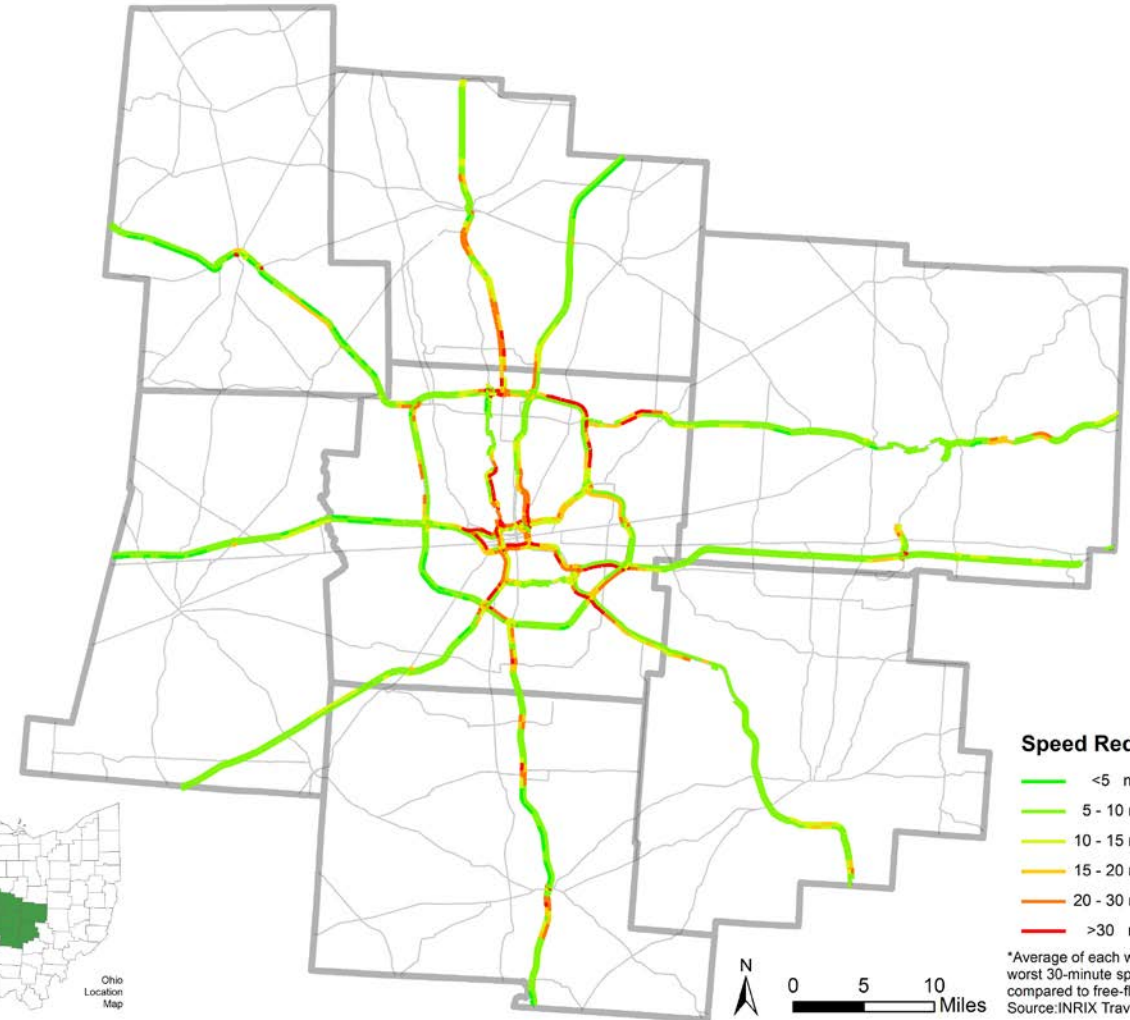
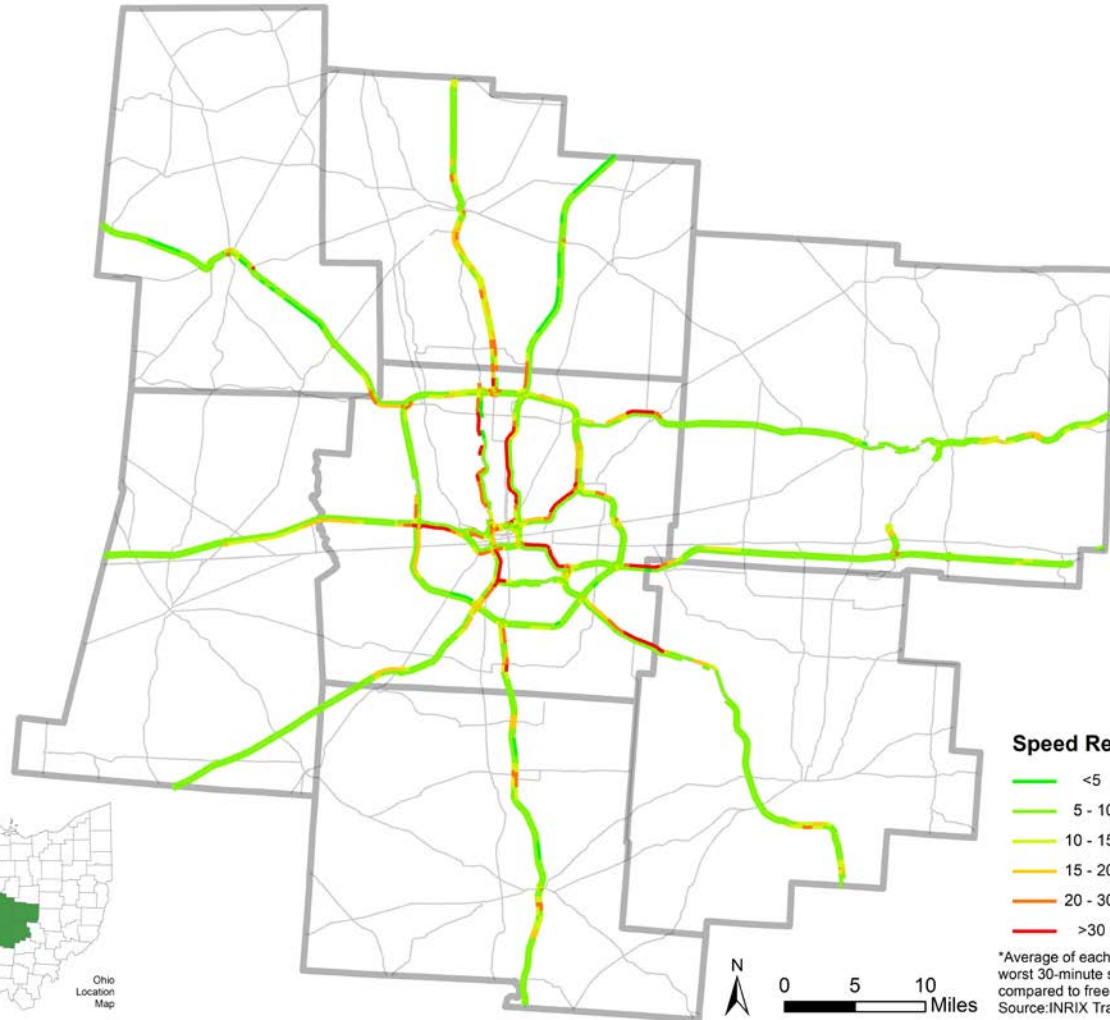
# From Traffic Volumes to Peak Period Congestion

# Congested Peak Period Speed Reduction

## Week of March 2nd

AM

PM



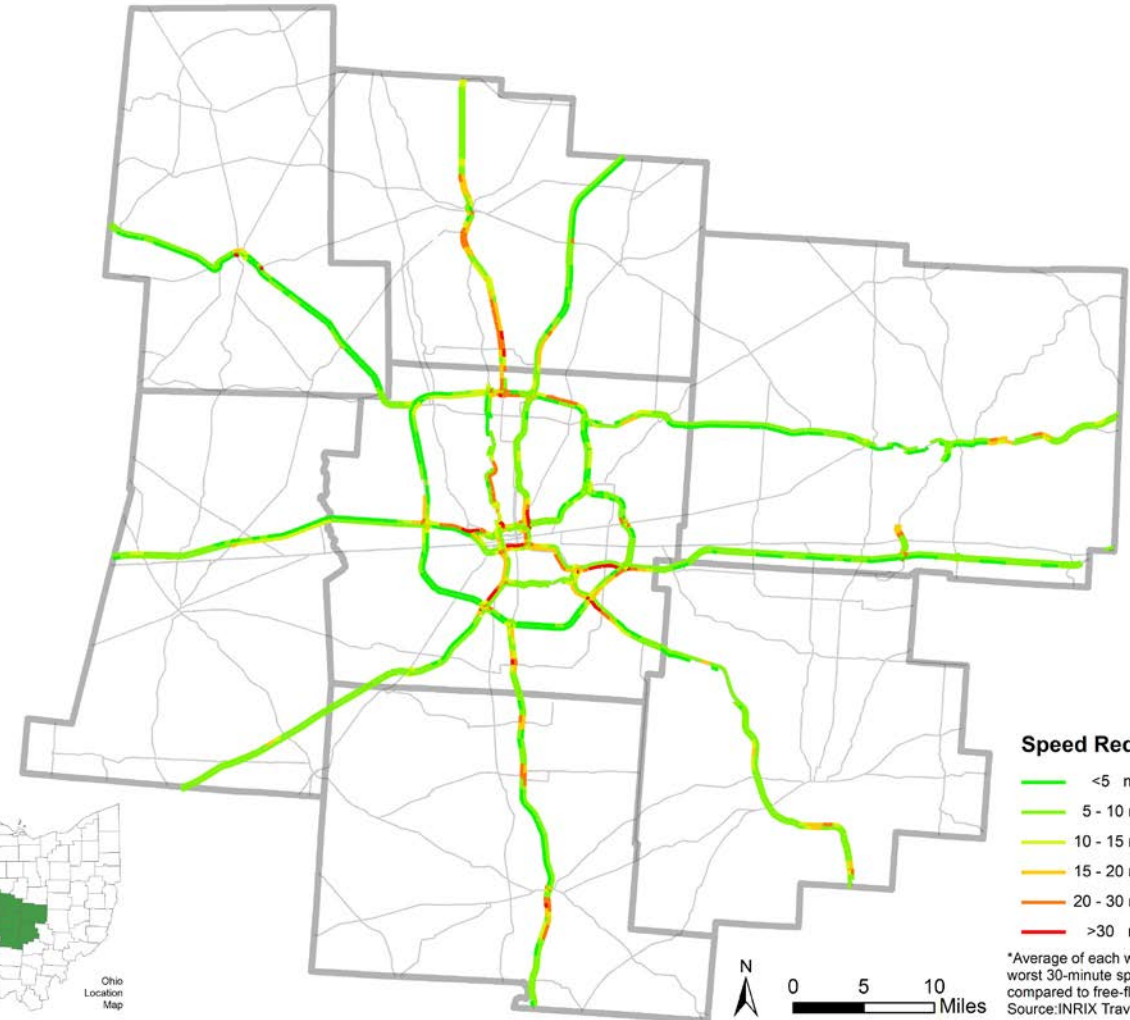
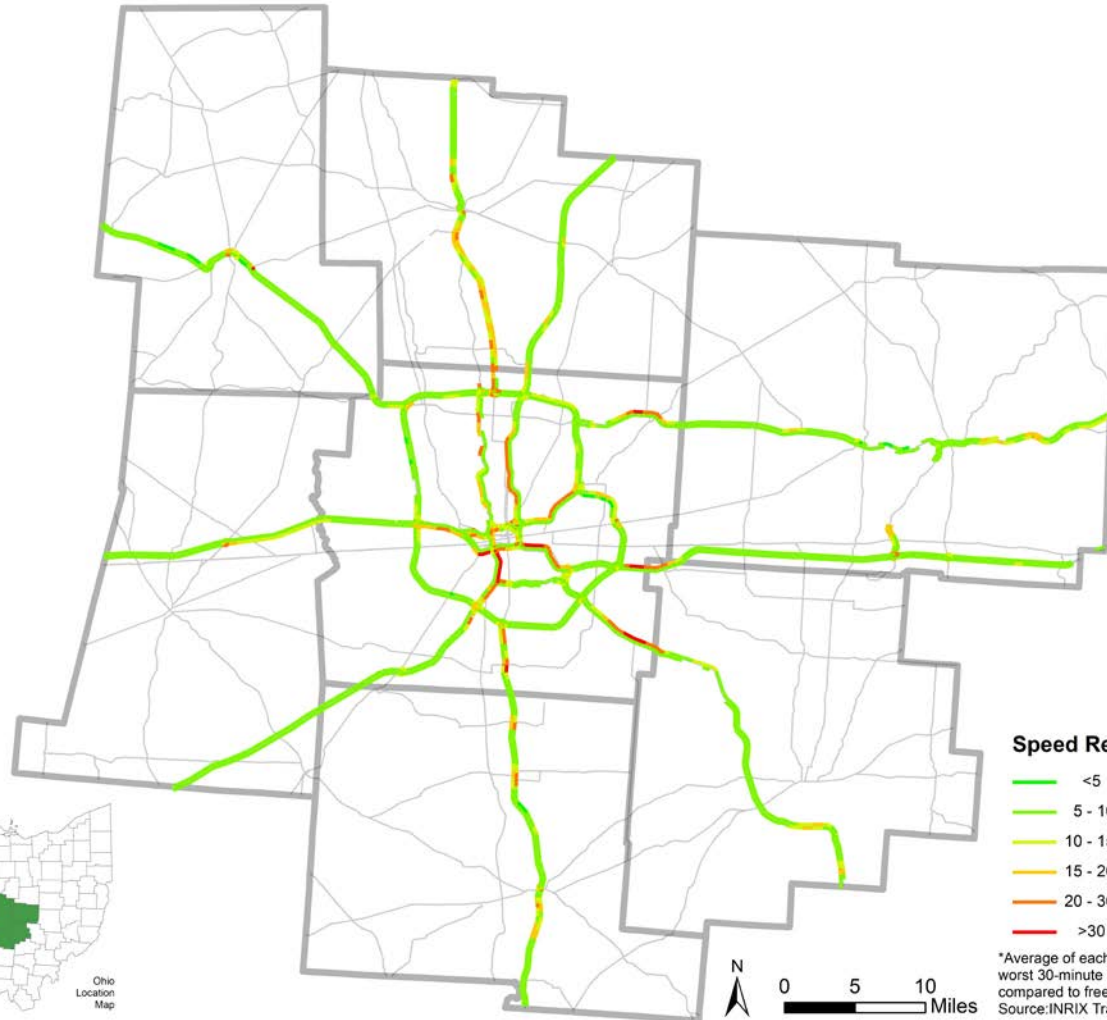


# Congested Peak Period Speed Reduction

## Week of March 9th

AM

PM

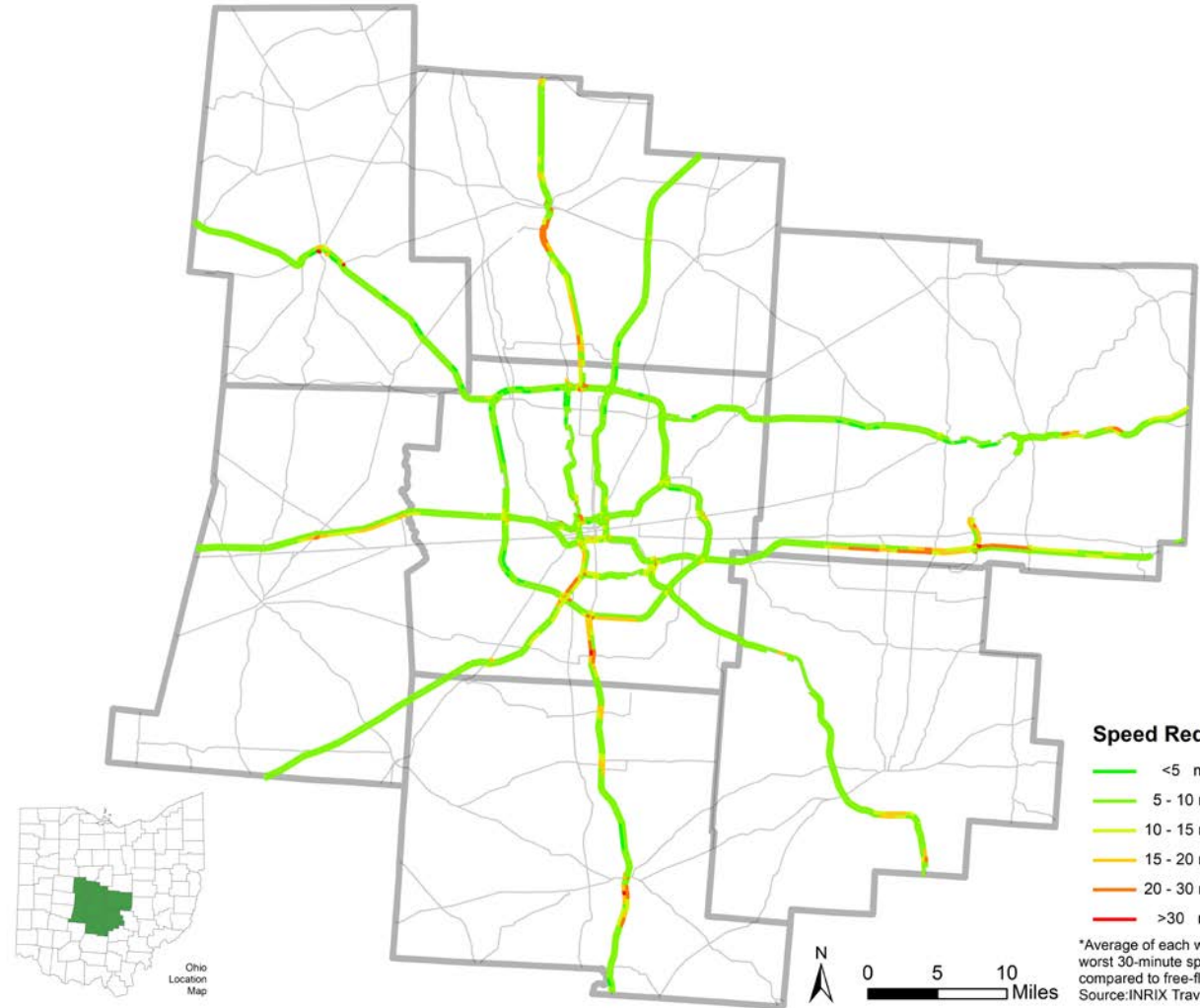
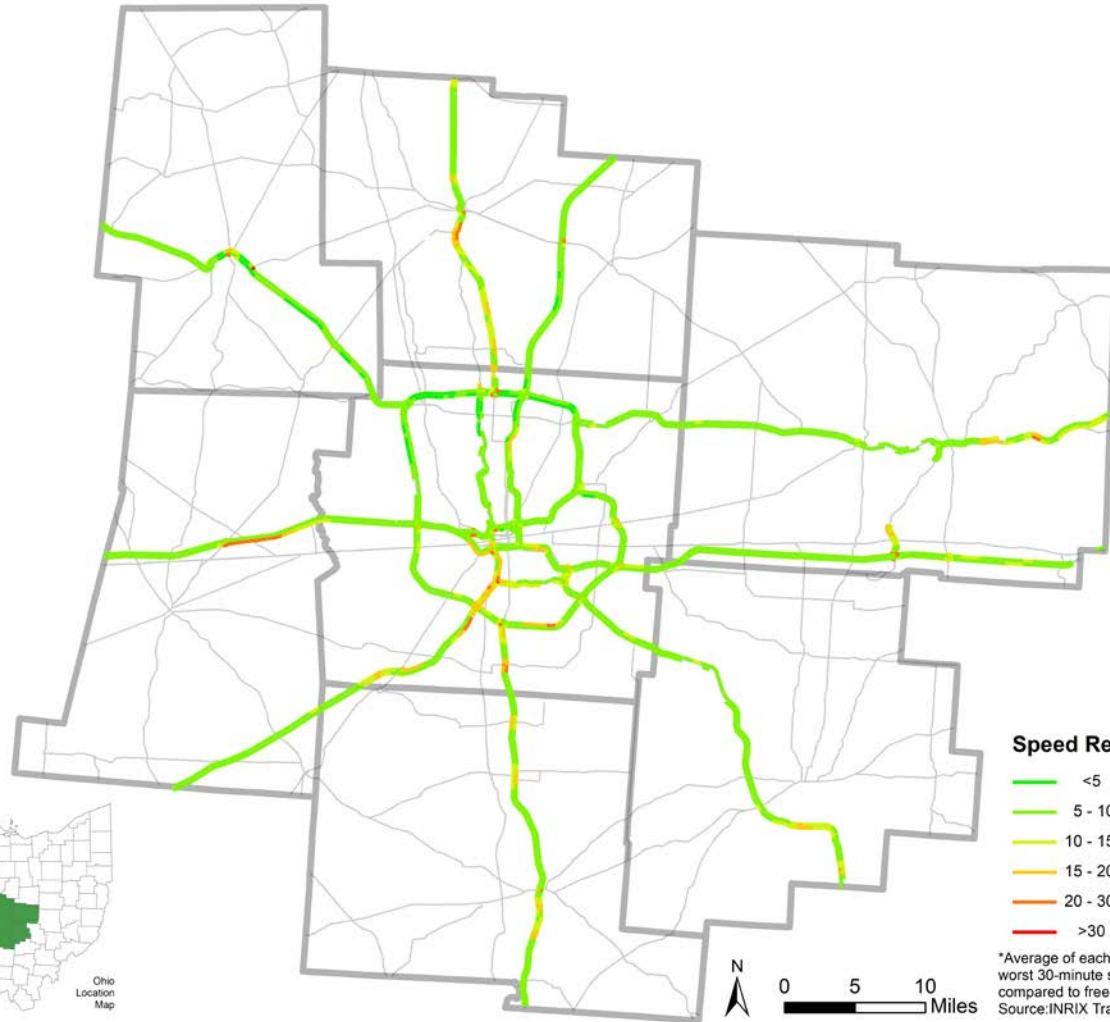


# Congested Peak Period Speed Reduction

Week of March 16th

AM

PM

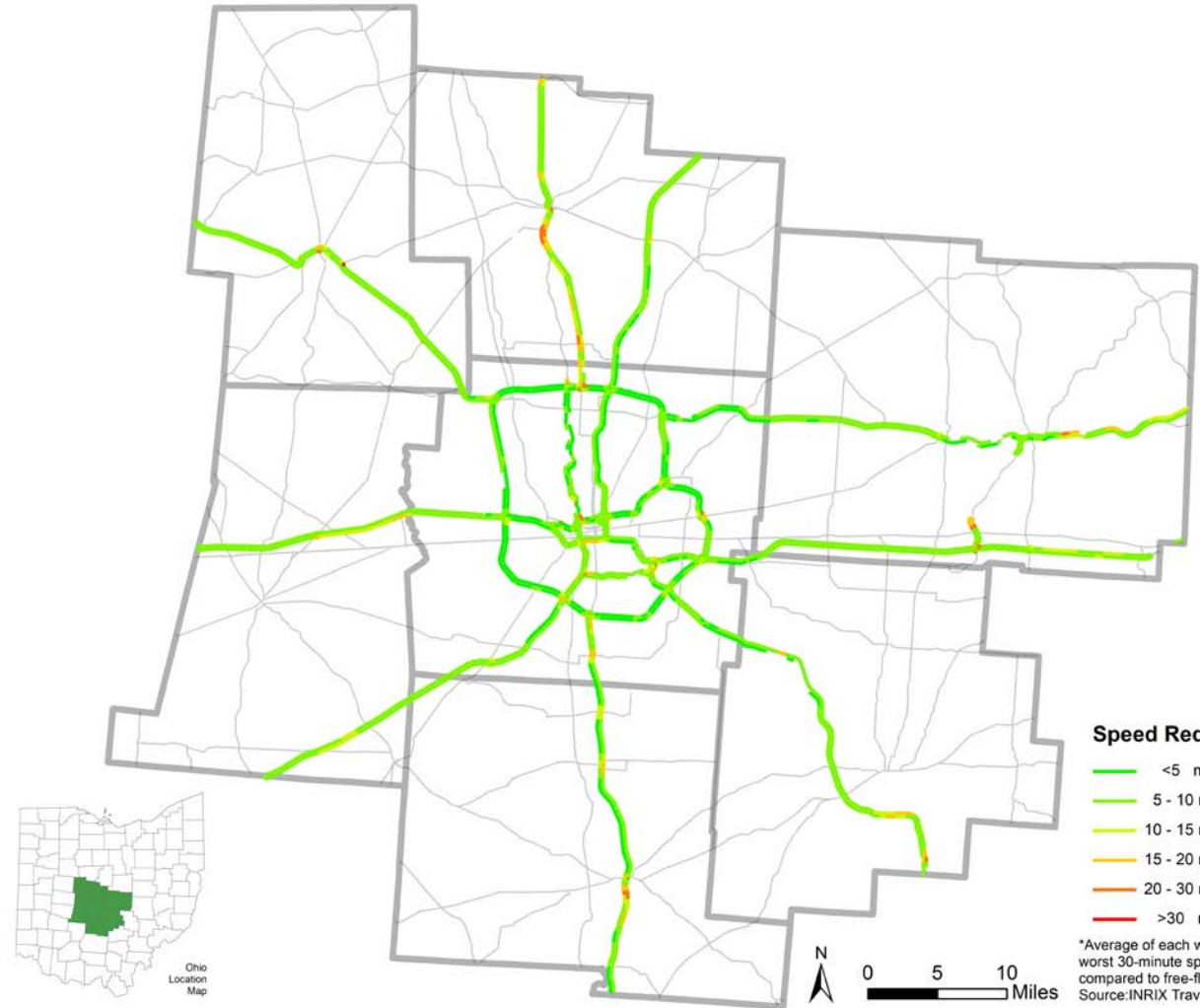
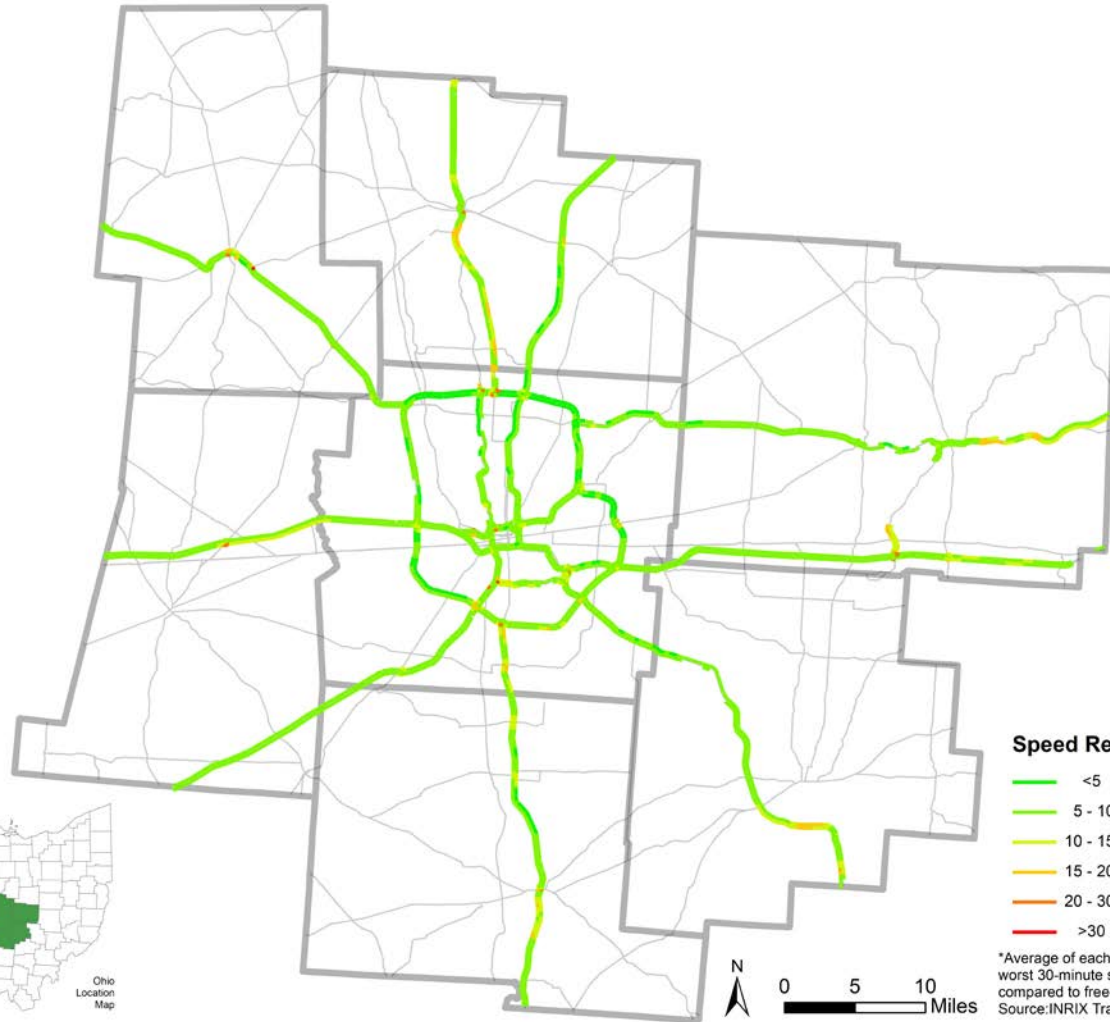


# Congested Peak Period Speed Reduction

Week of March 23rd

AM

PM



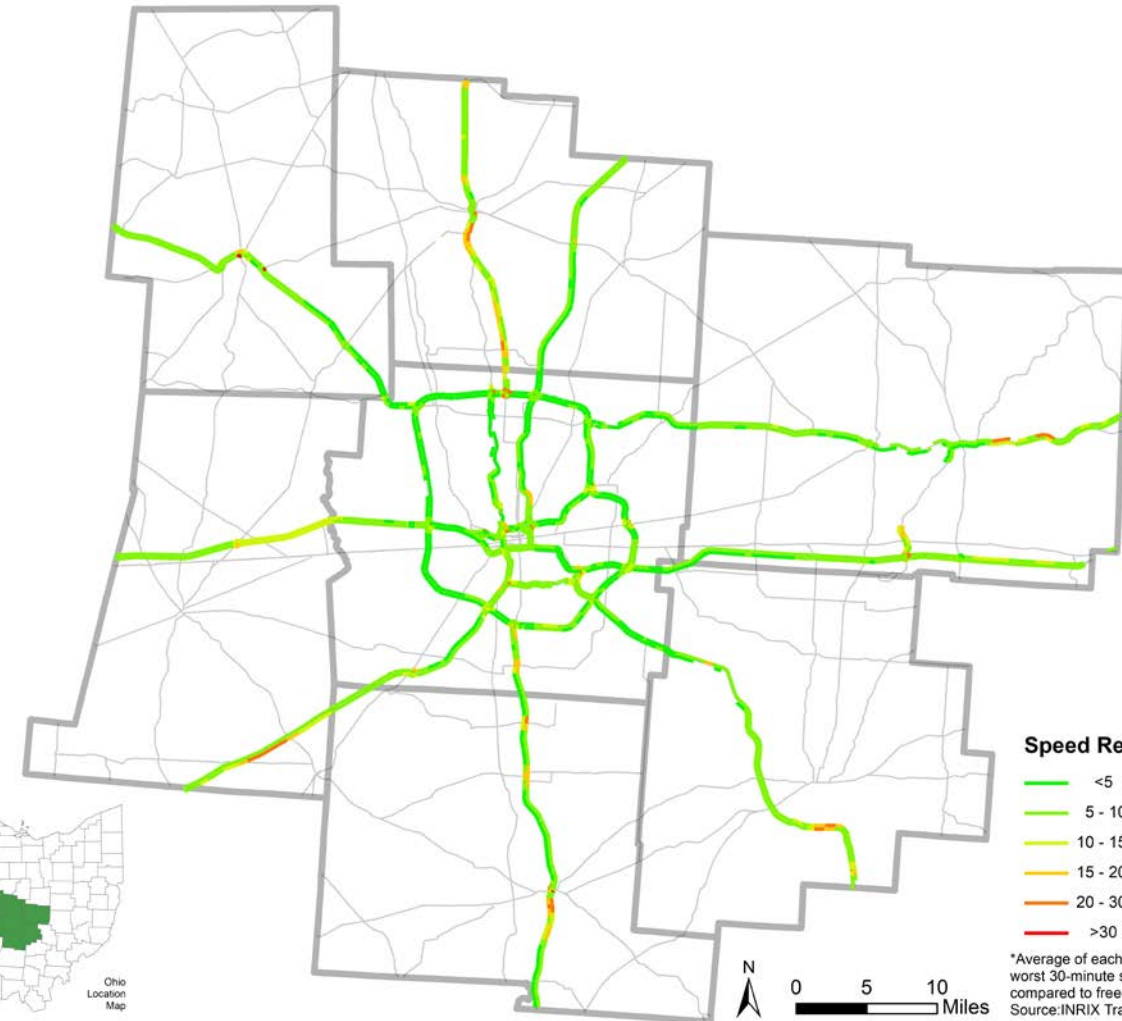
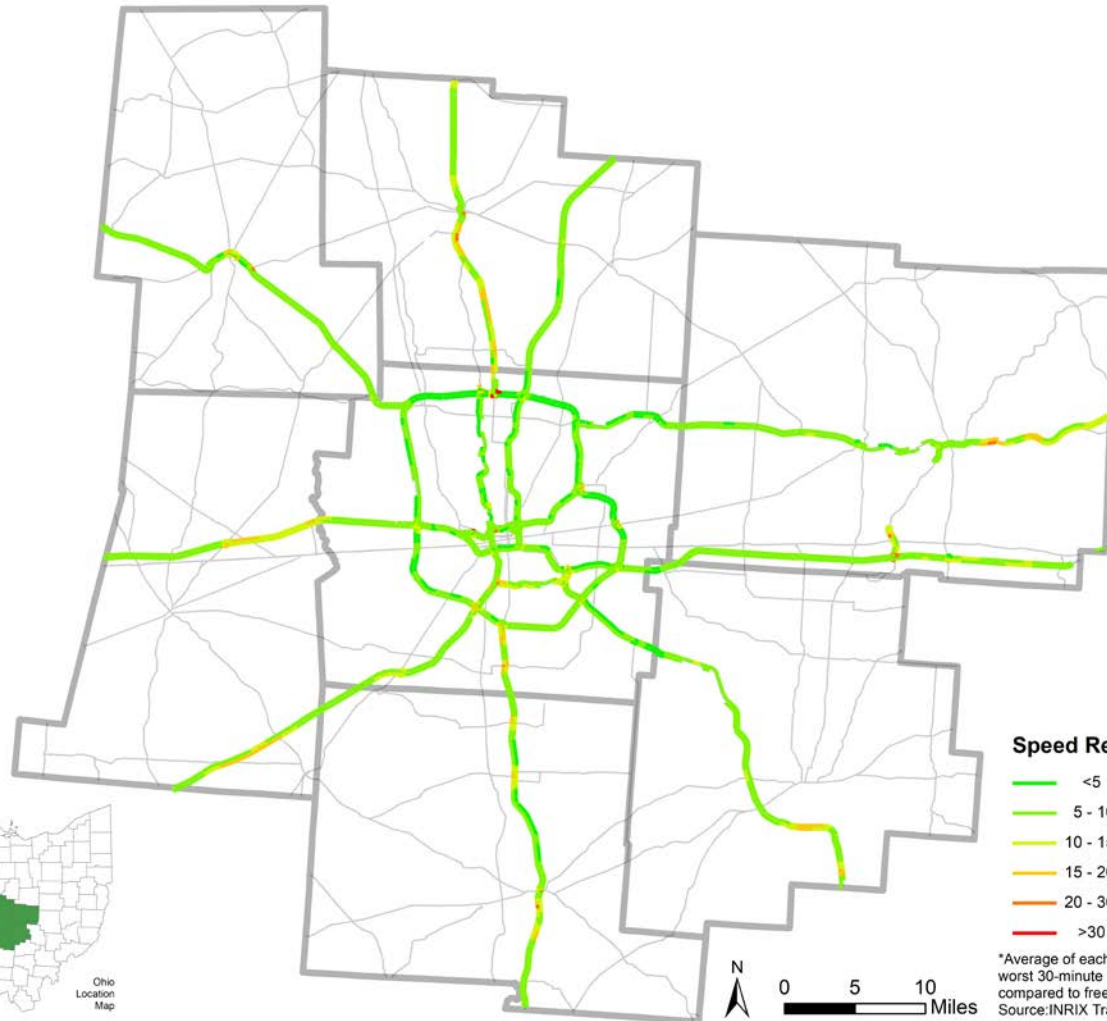


# Congested Peak Period Speed Reduction

Week of March 30th

AM

PM

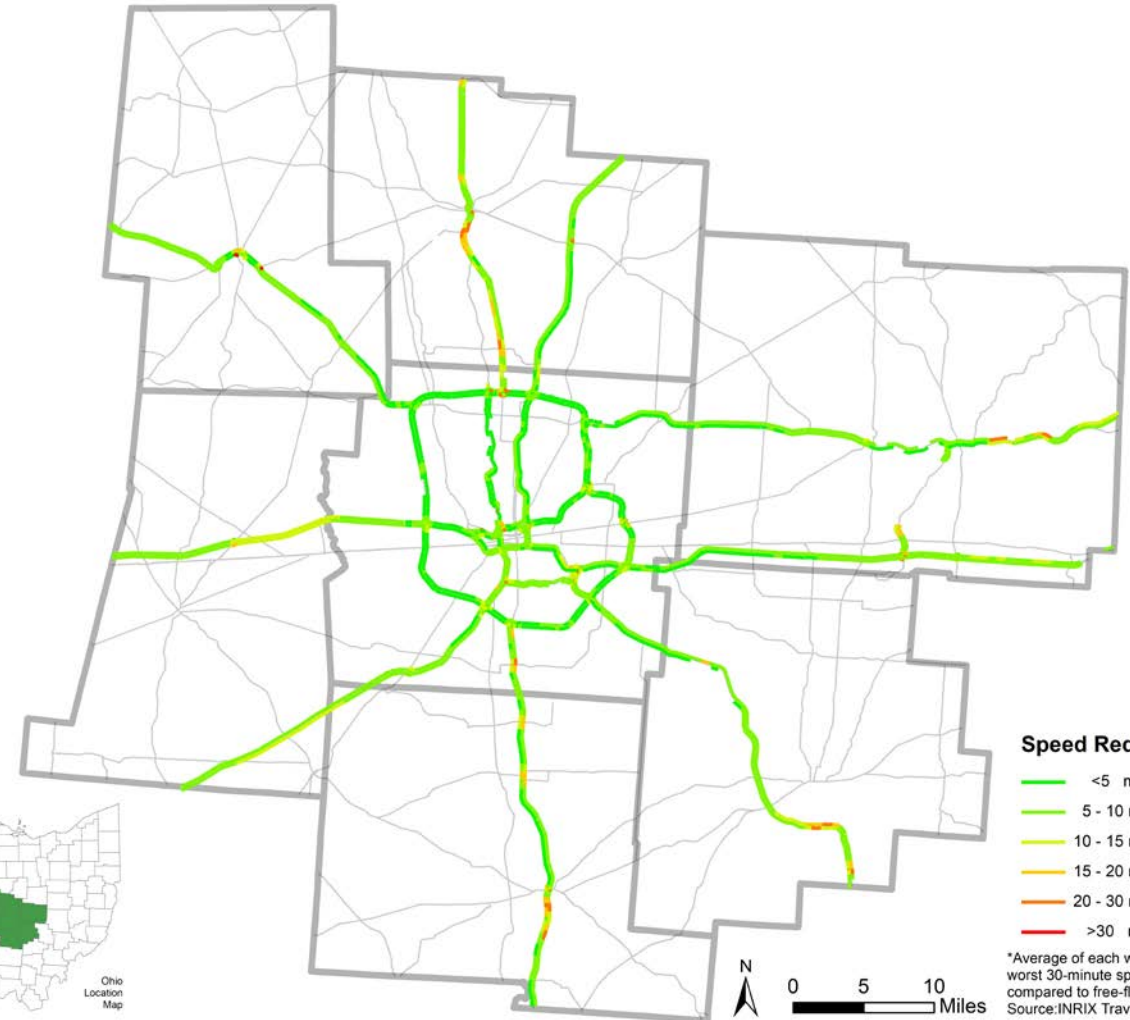
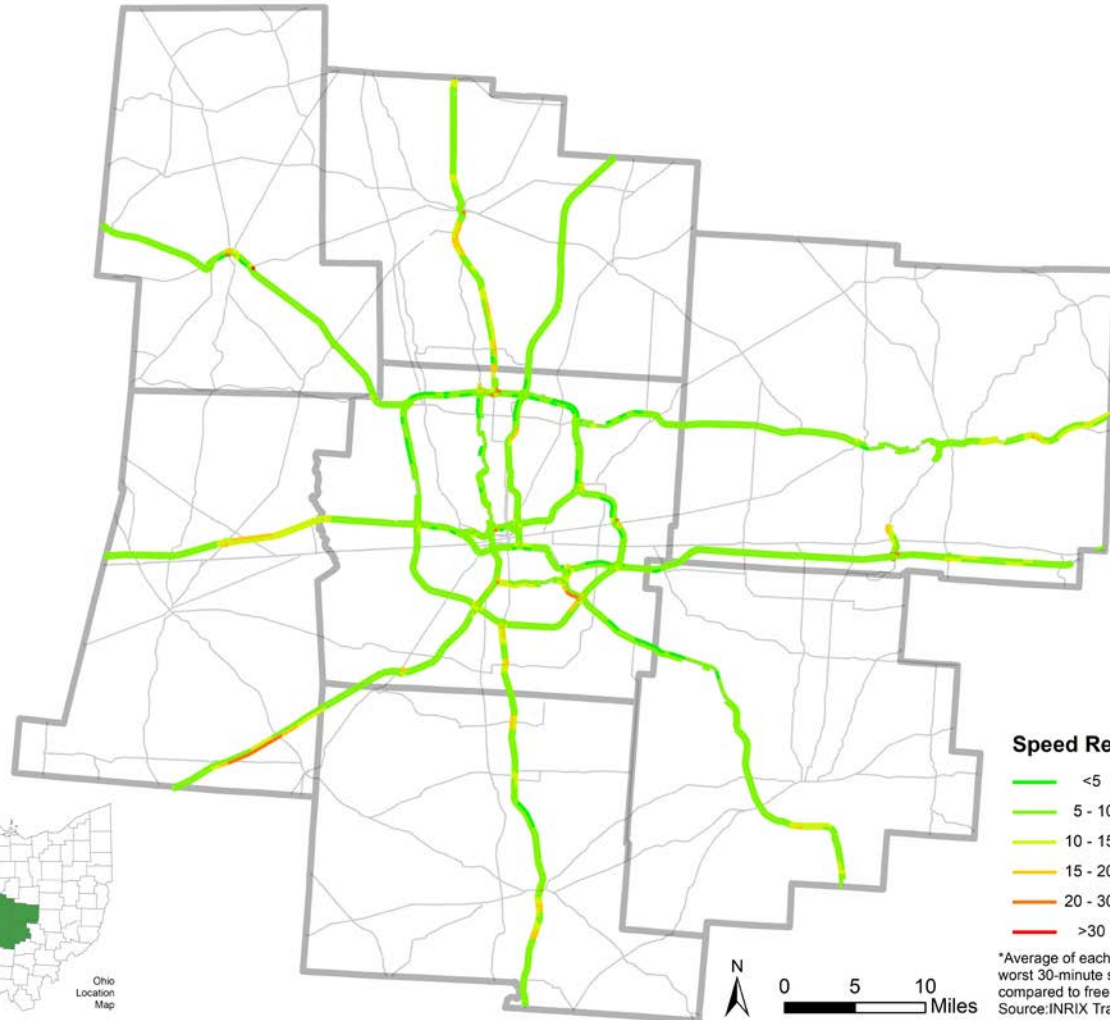


# Congested Peak Period Speed Reduction

Week of April 6th

AM

PM

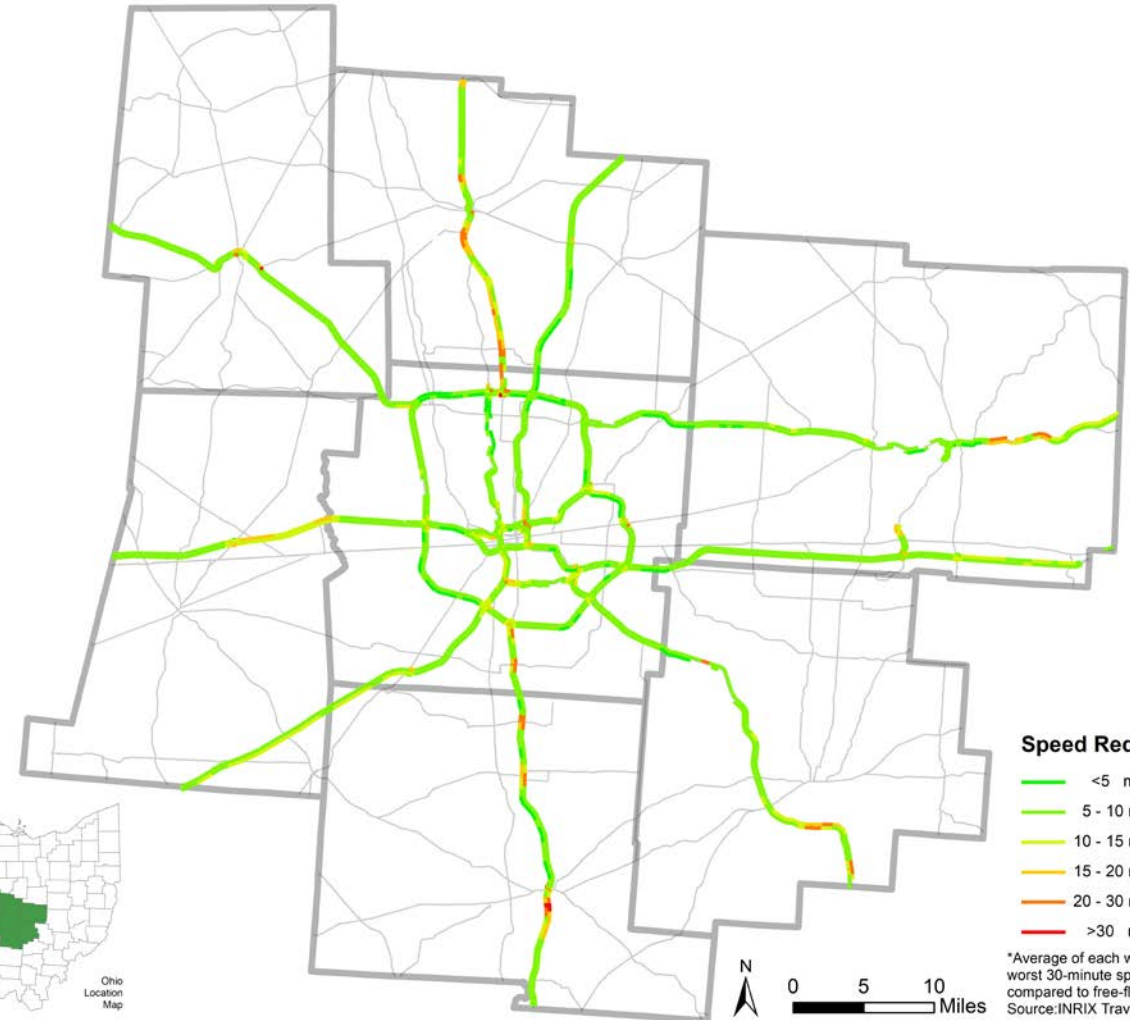
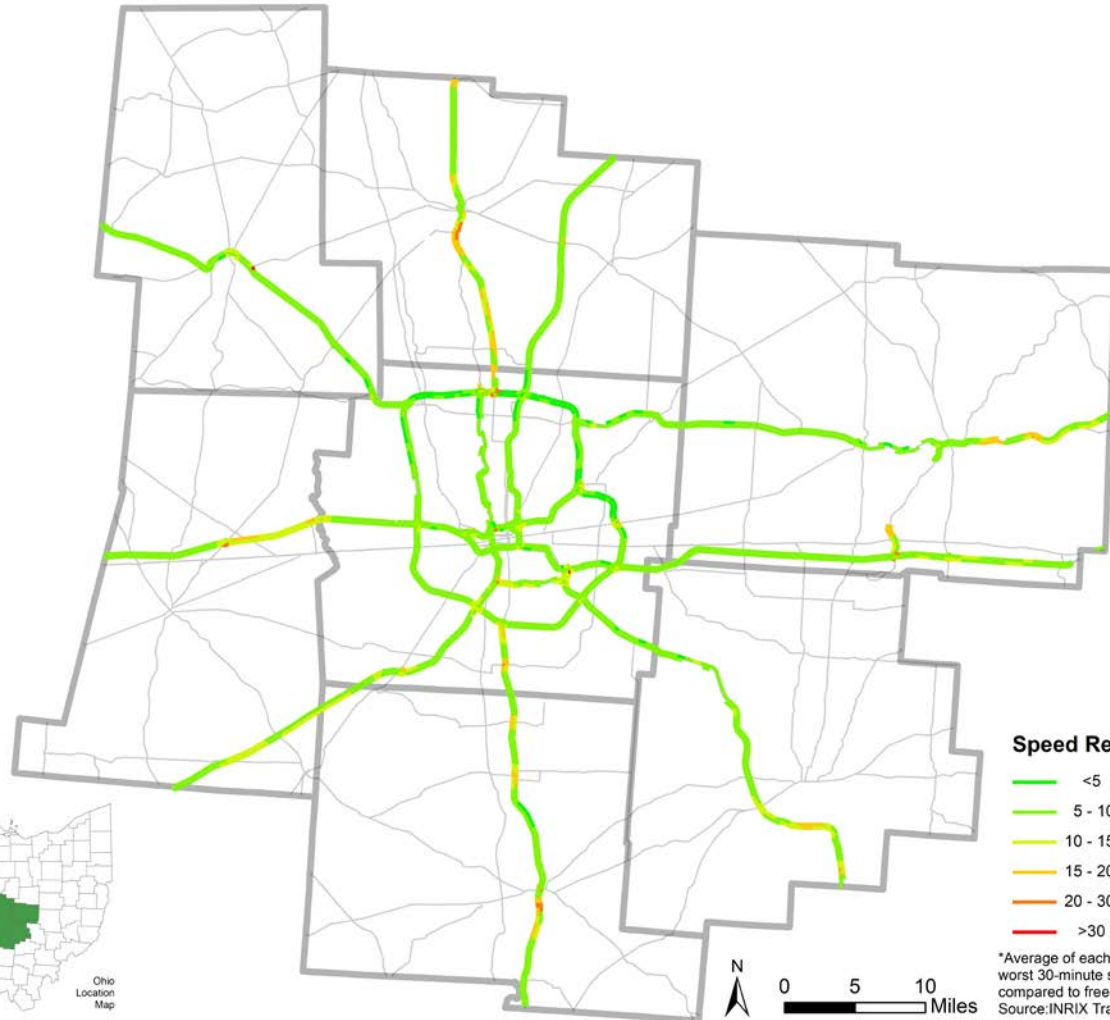


# Congested Peak Period Speed Reduction

Week of April 13th

AM

PM



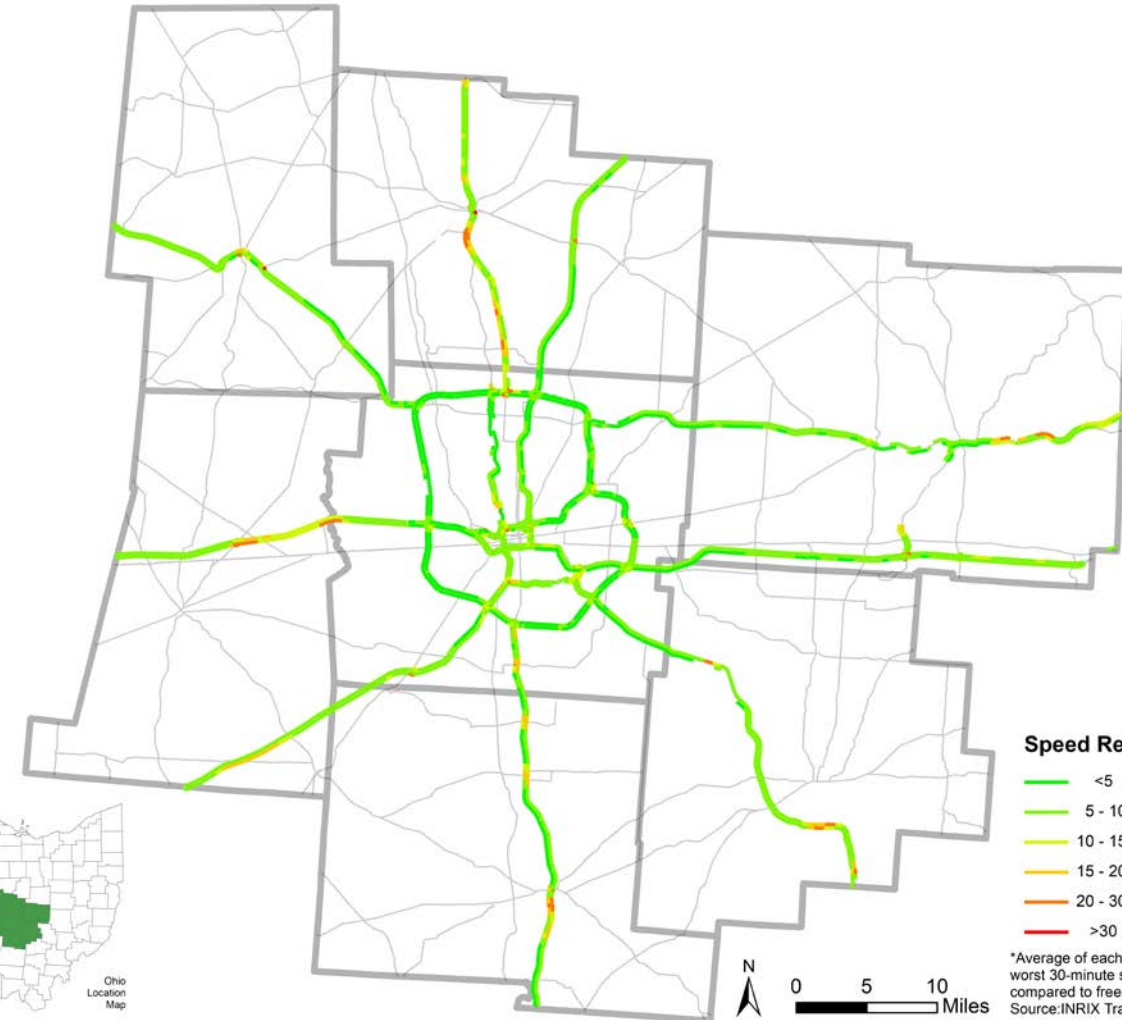
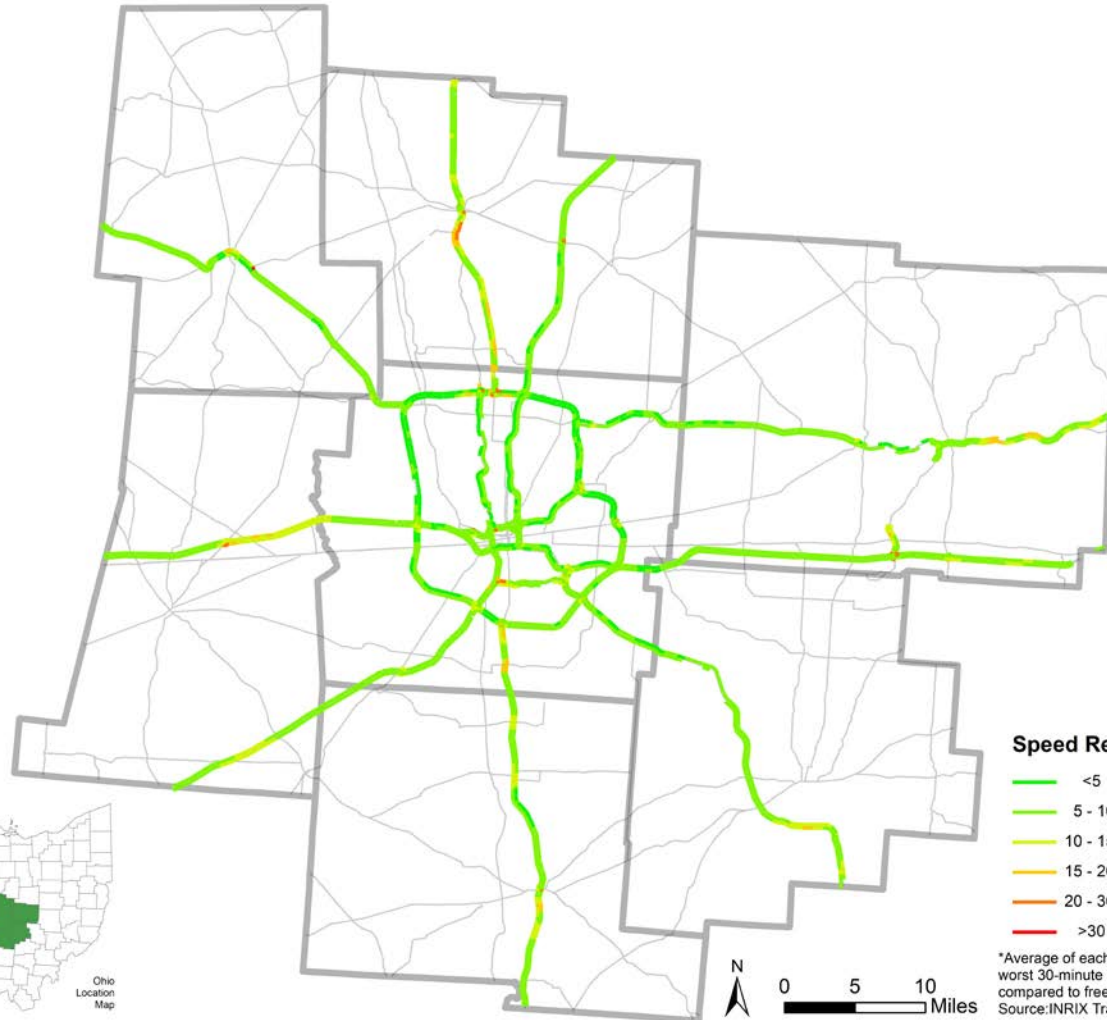


# Congested Peak Period Speed Reduction

Week of April 20th

AM

PM

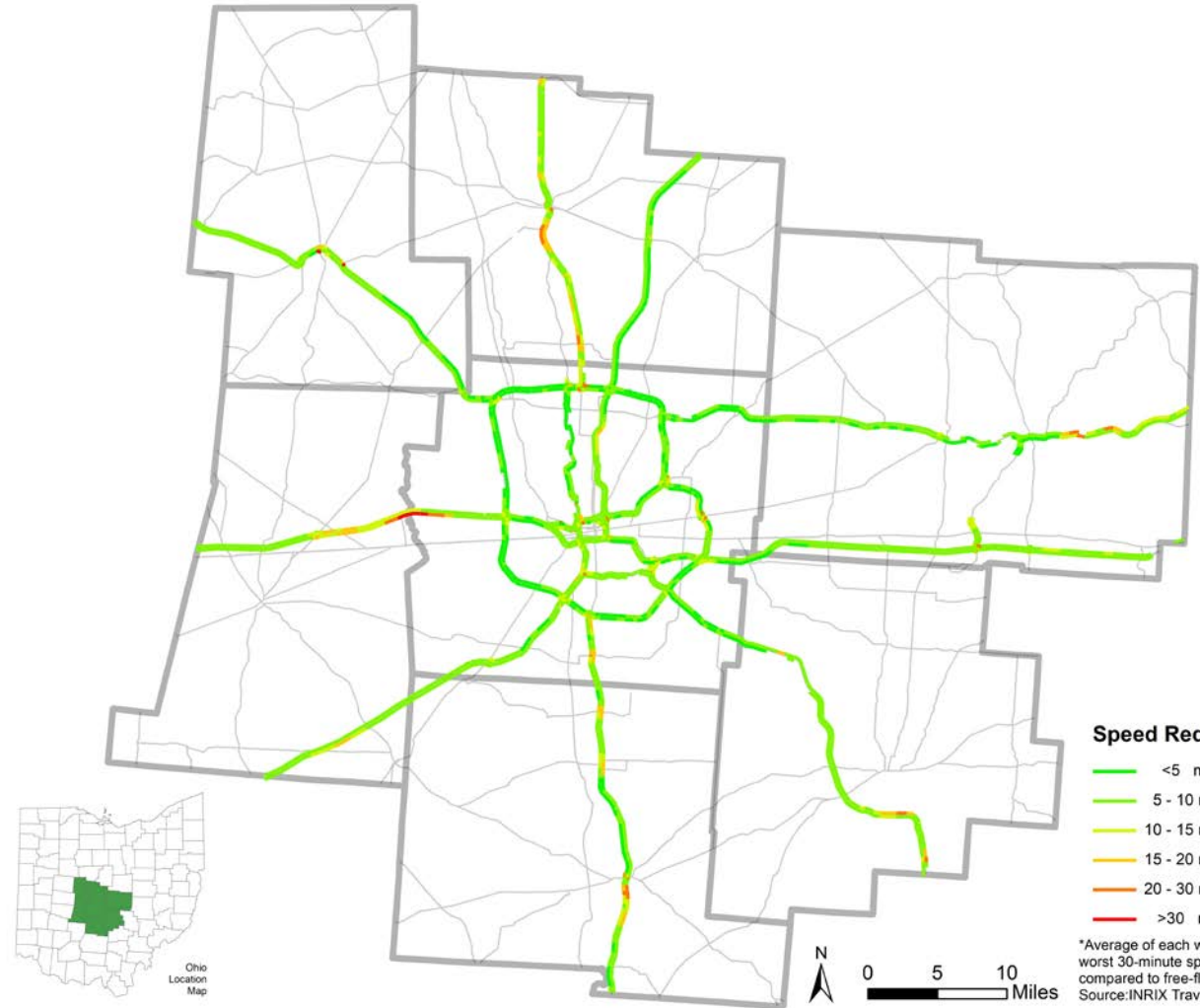
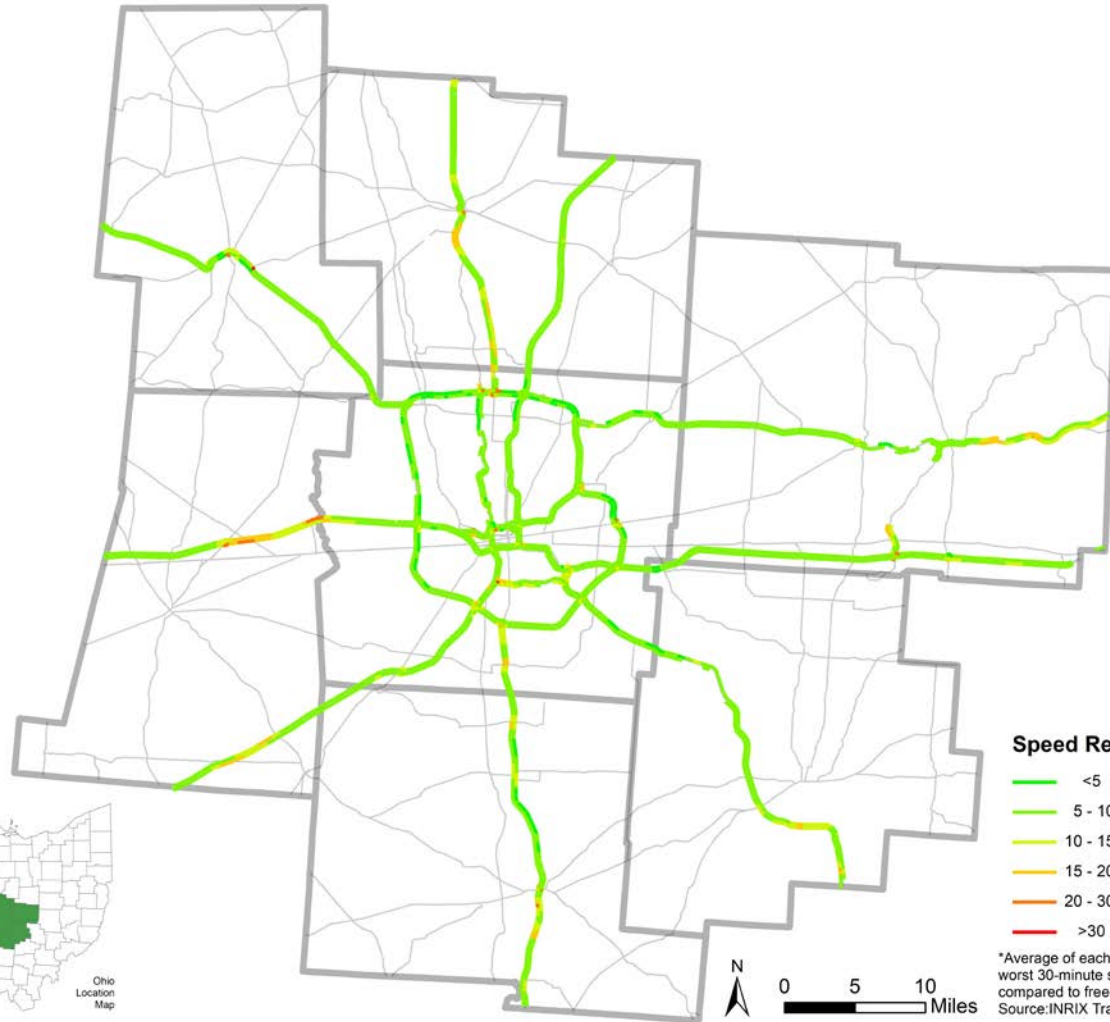


# Congested Peak Period Speed Reduction

Week of April 27th

AM

PM

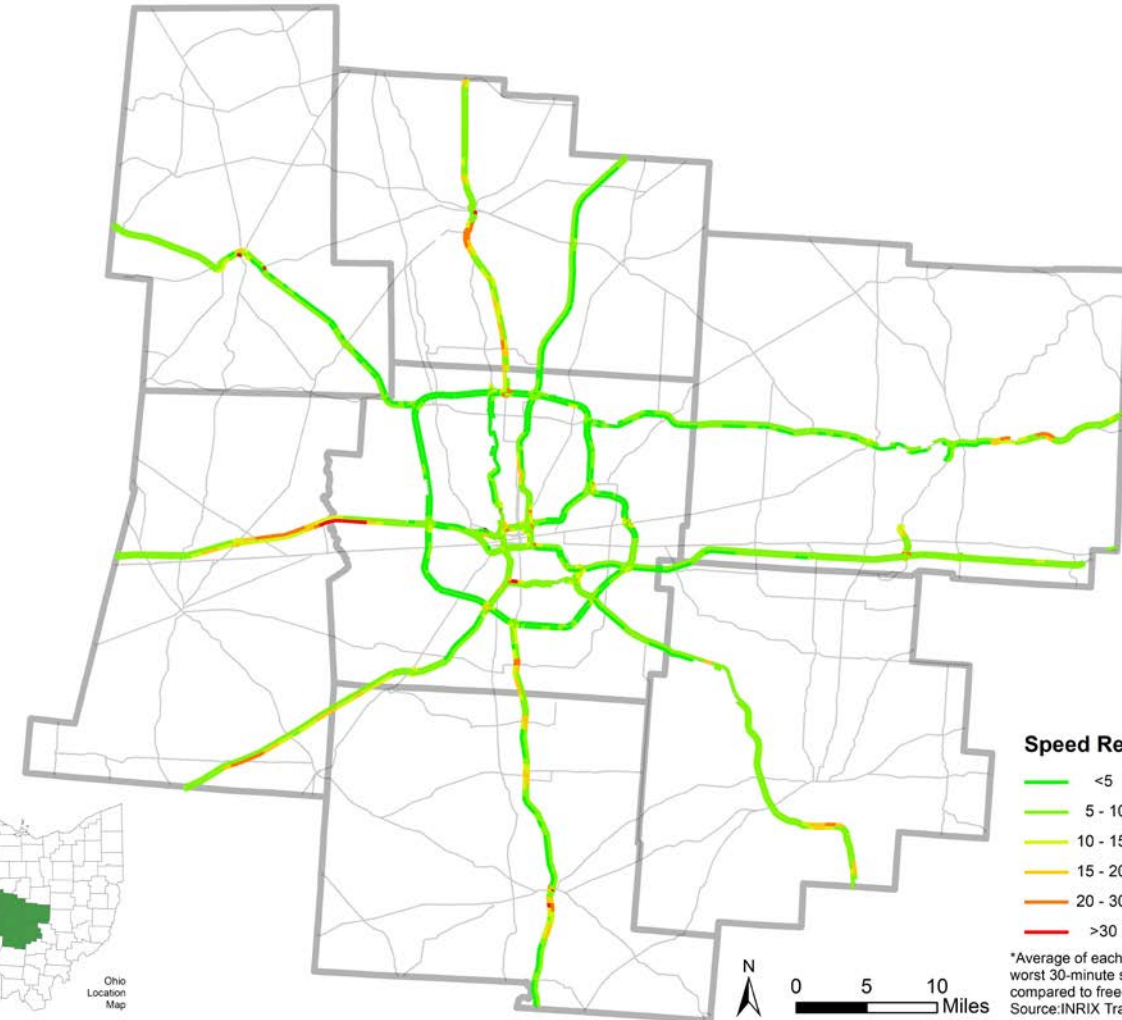
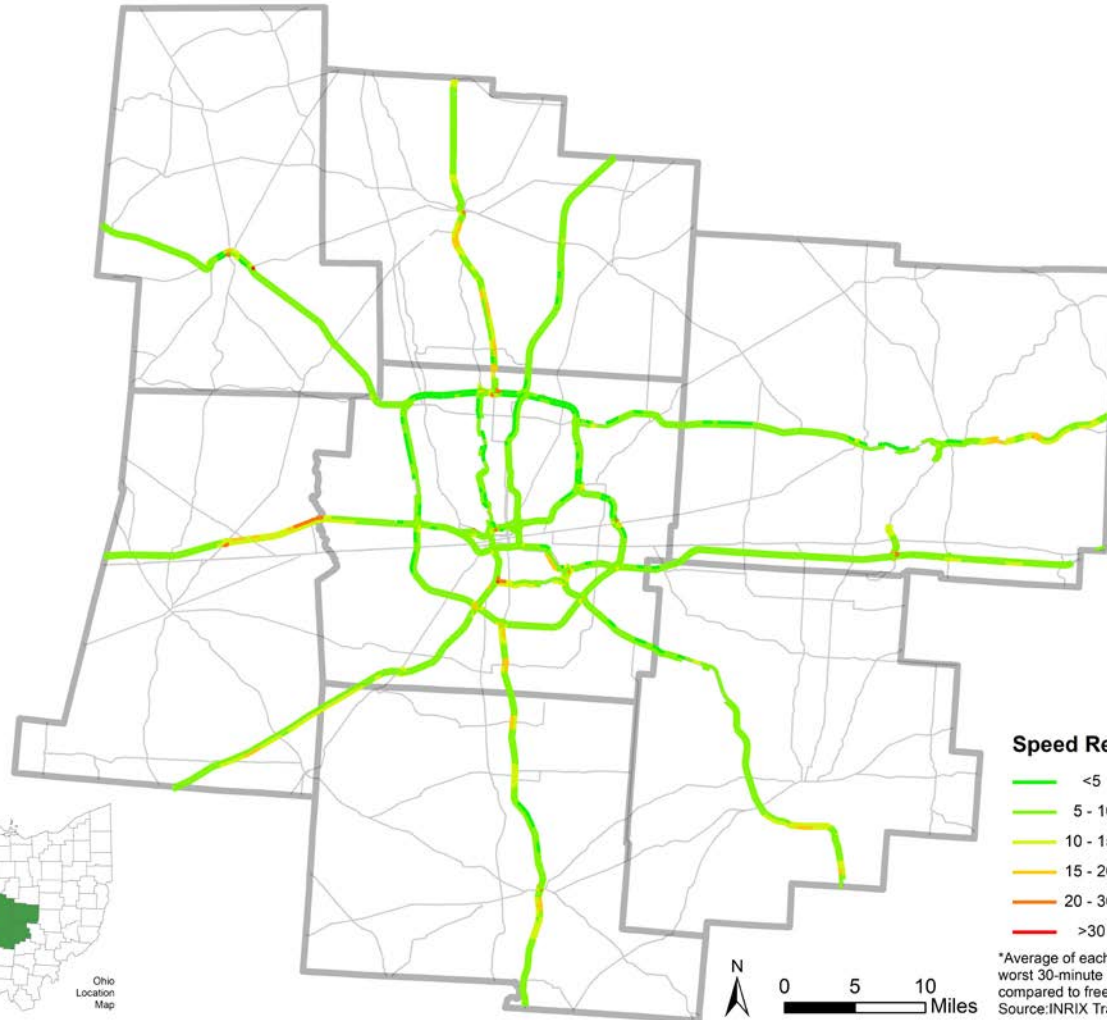


# Congested Peak Period Speed Reduction

## Week of May 4th

AM

PM



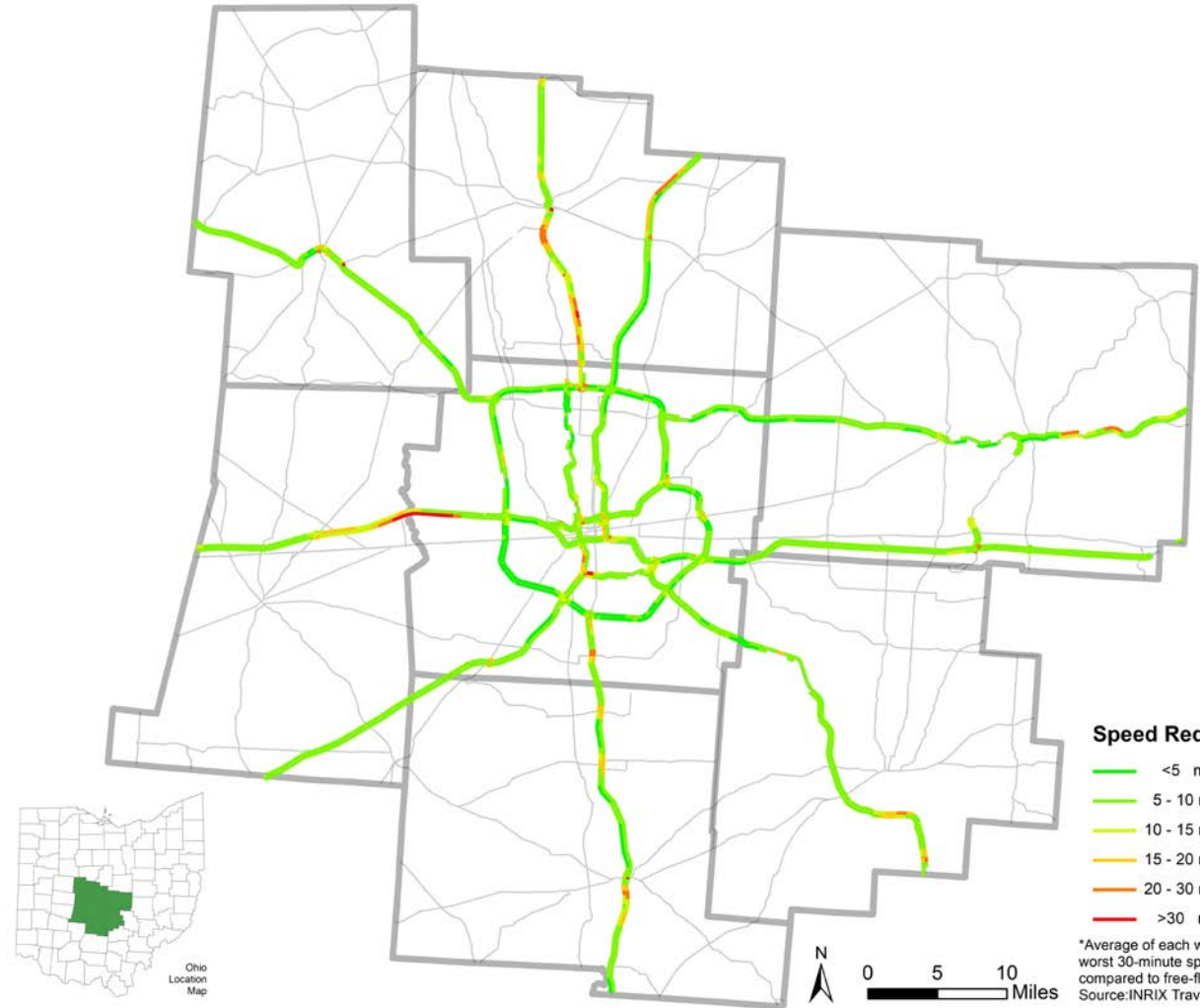
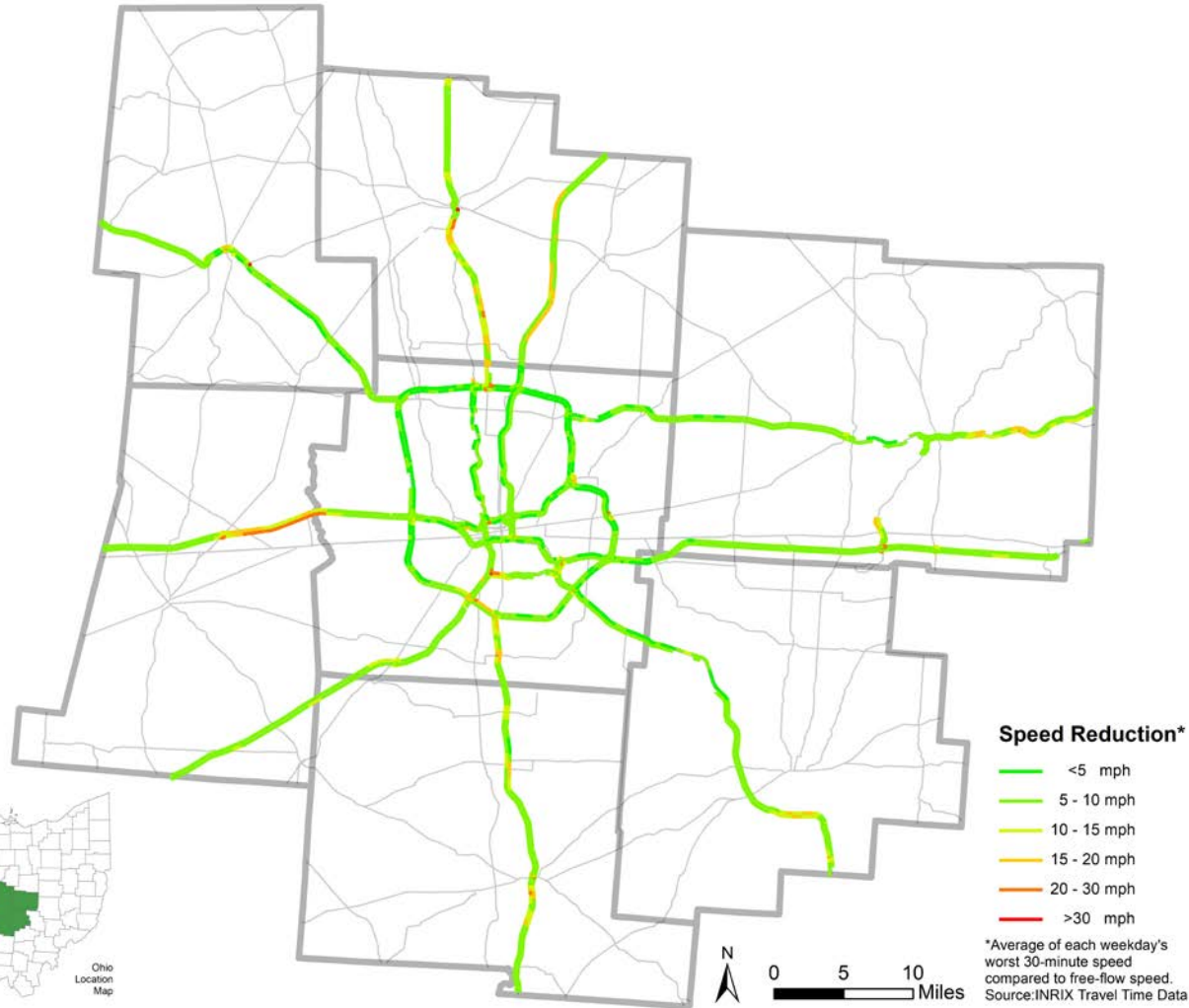


# Congested Peak Period Speed Reduction

## Week of May 11th

AM

PM

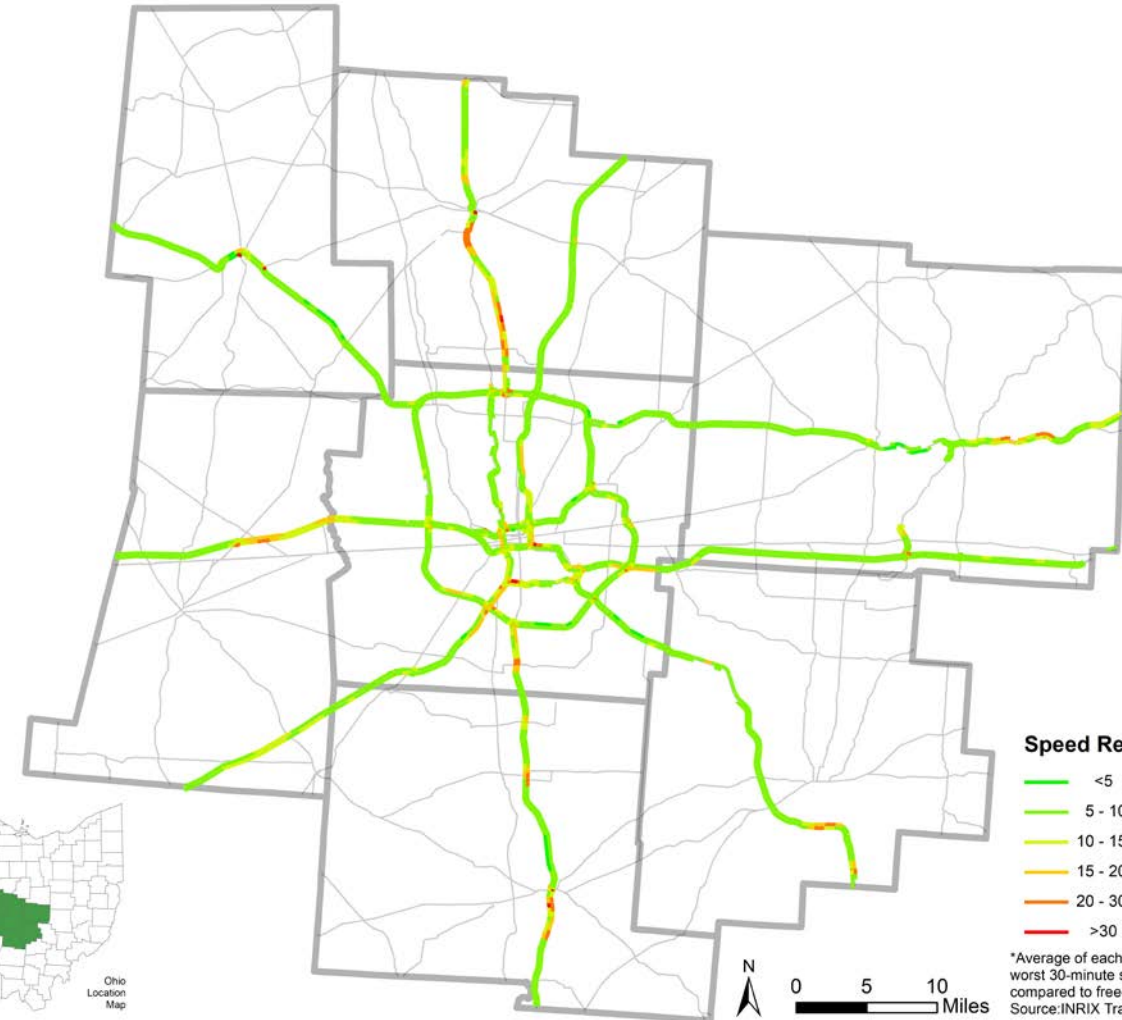
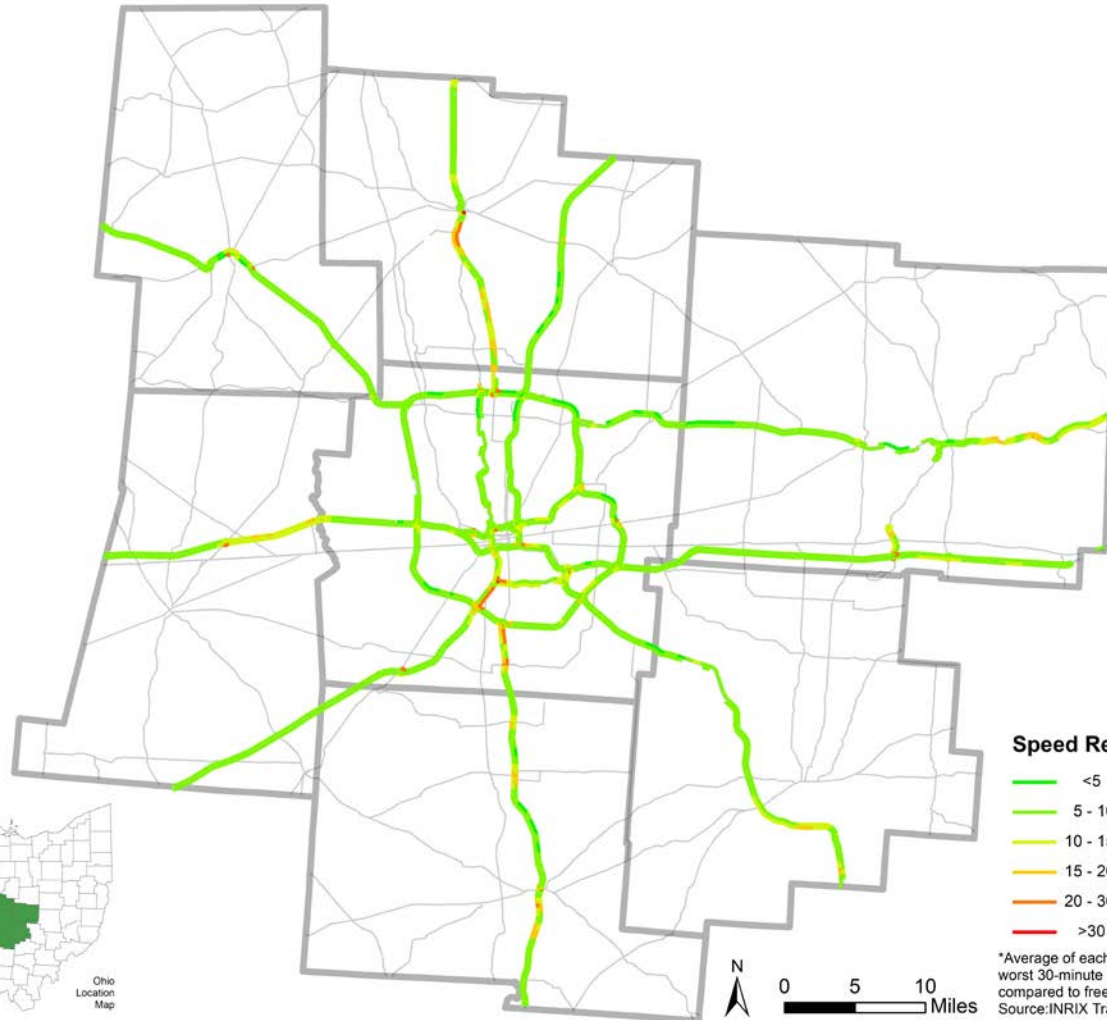


# Congested Peak Period Speed Reduction

## Week of May 18th

AM

PM



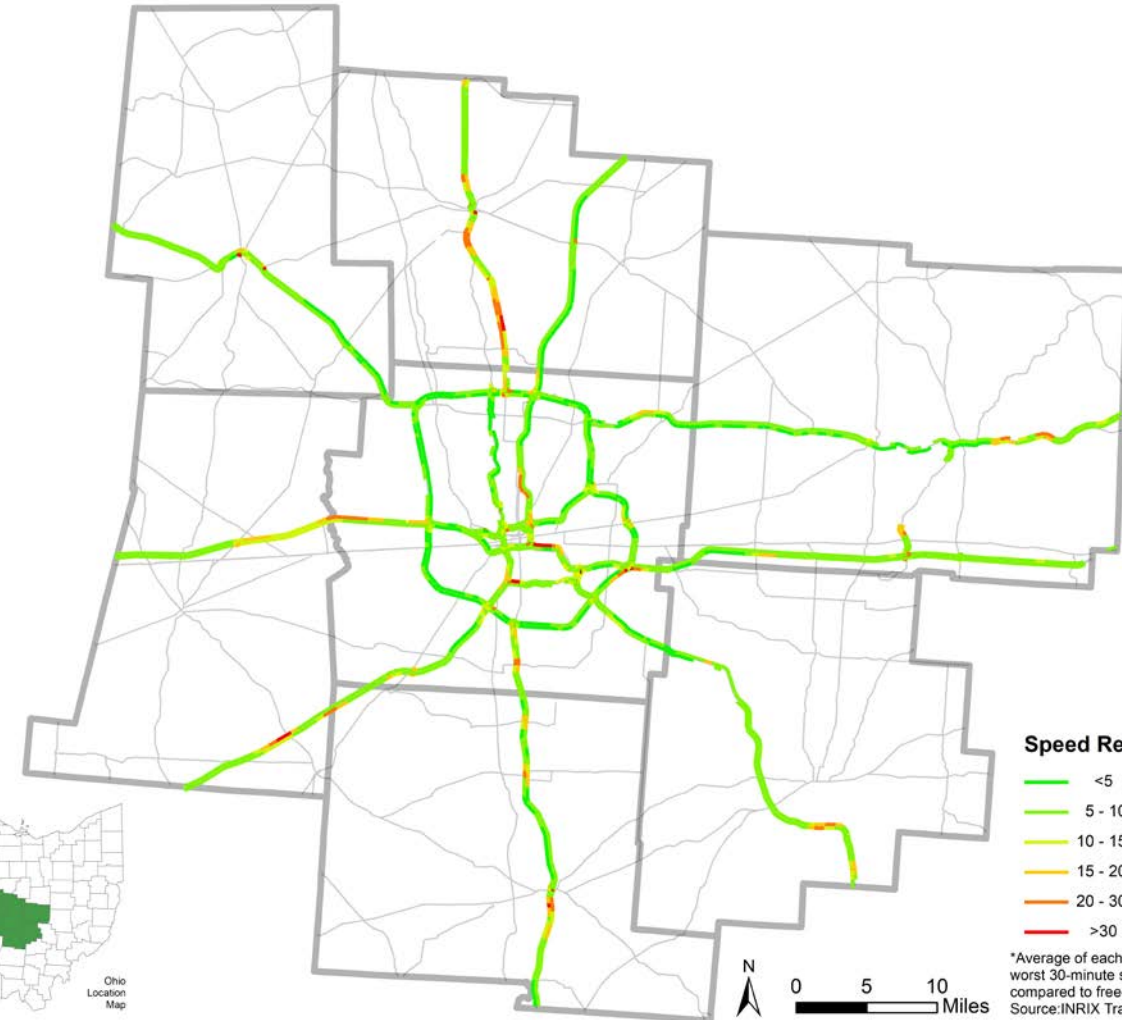
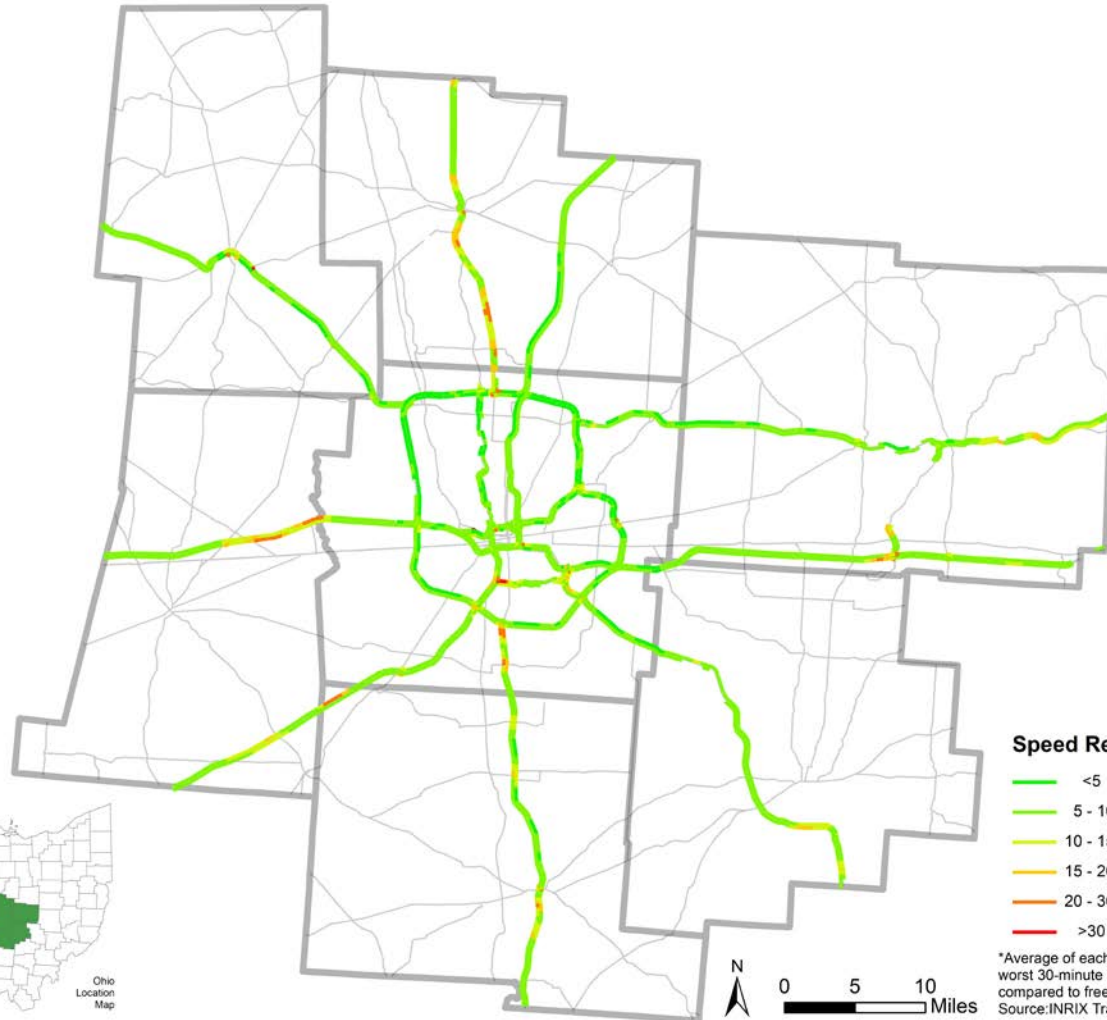


# Congested Peak Period Speed Reduction

## Week of May 25th

AM

PM



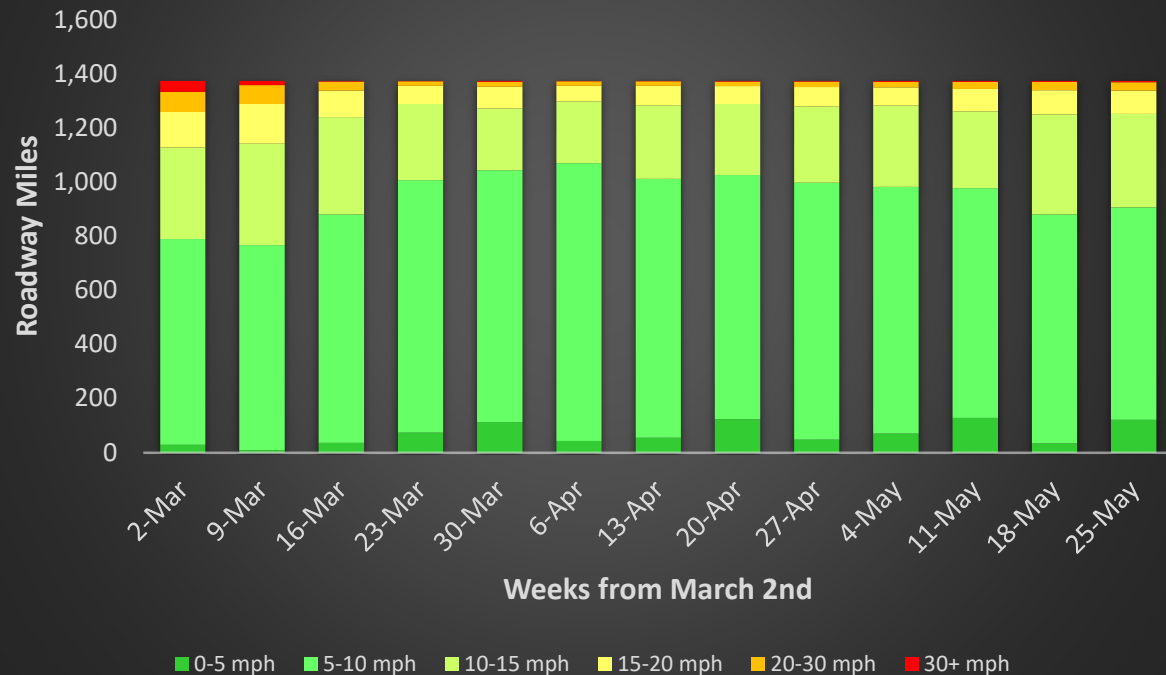
# Congested Peak Period Speed Reduction

Proportion of Miles – Freeways/Expressways

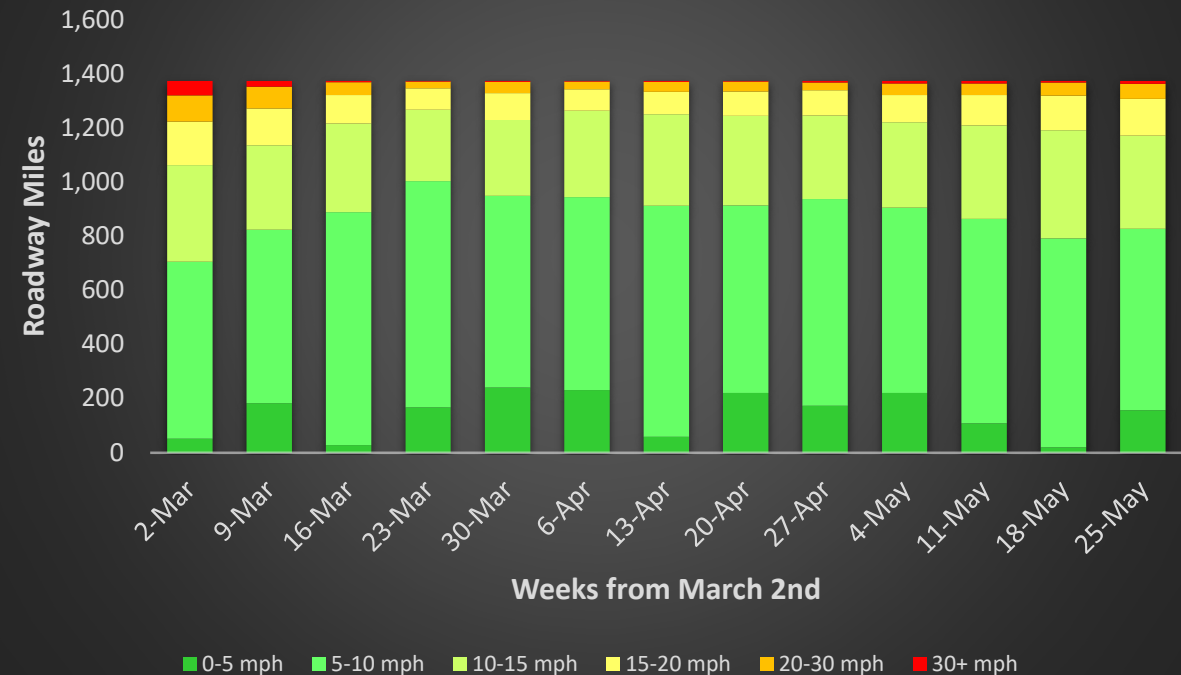
AM

PM

**Roadway Miles by Speed Reduction for Worst 30-min in AM**  
~freeway in 7 counties in central Ohio~



**Roadway Miles by Speed Reduction for Worst 30-min in PM**  
~freeway in 7 counties in central Ohio~



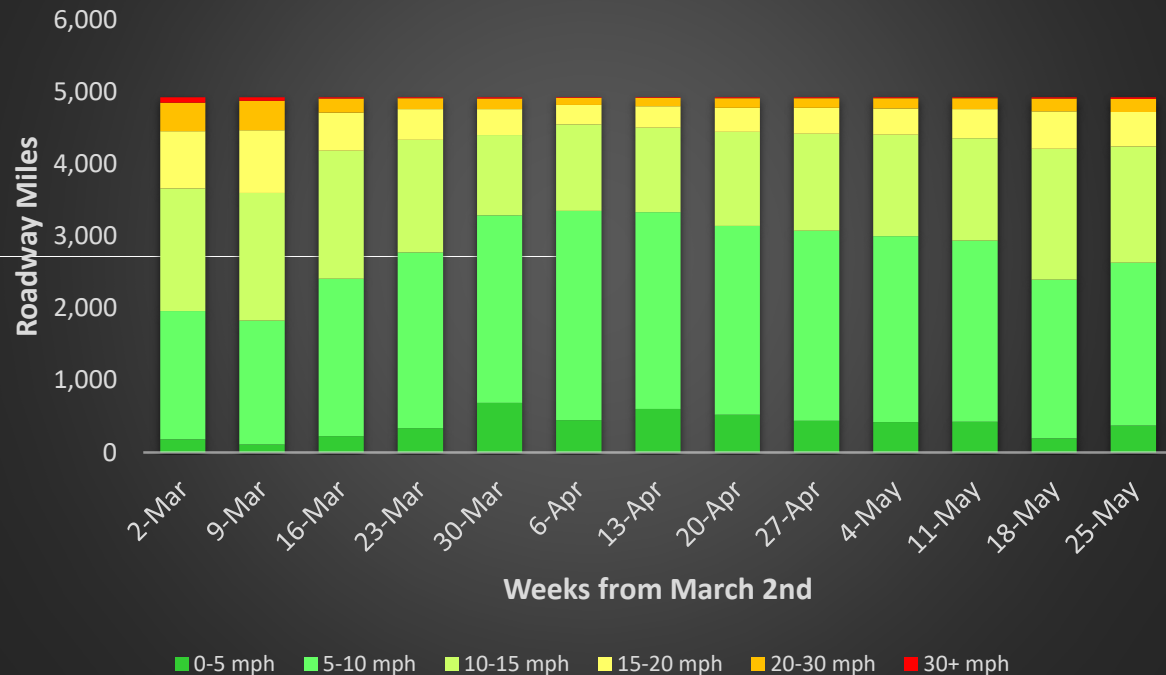
# Congested Peak Period Speed Reduction

Proportion of Miles – All Roads with data

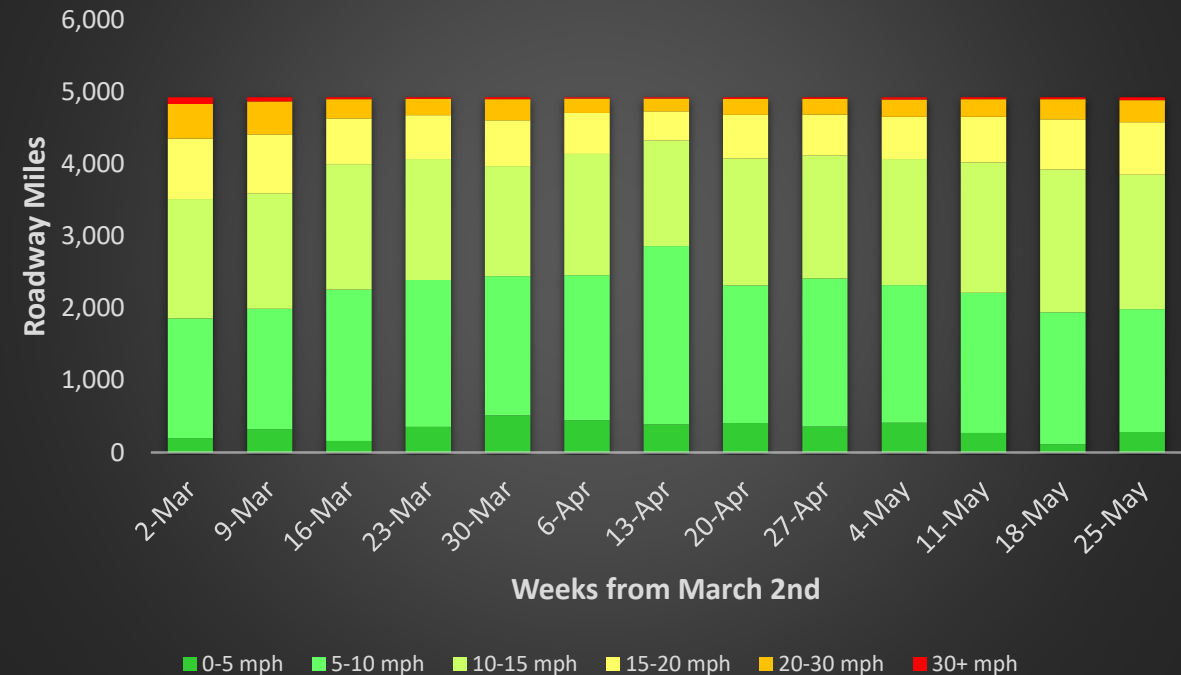
AM

PM

**Roadway Miles by Speed Reduction for Worst 30-min in AM**  
~all roadways in 7 counties in central Ohio~



**Roadway Miles by Speed Reduction for Worst 30-min in PM**  
~all roadways in 7 counties in central Ohio~



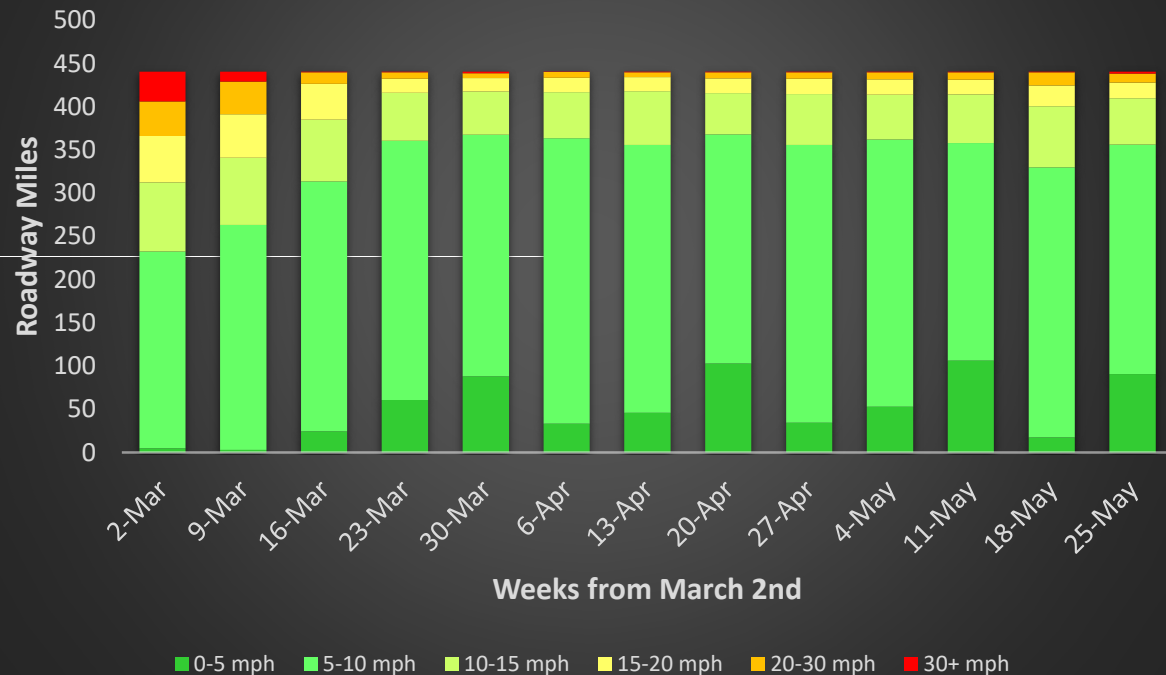
# Congested Peak Period Speed Reduction

## Proportion of Miles – Freeways/Expressways – Franklin County

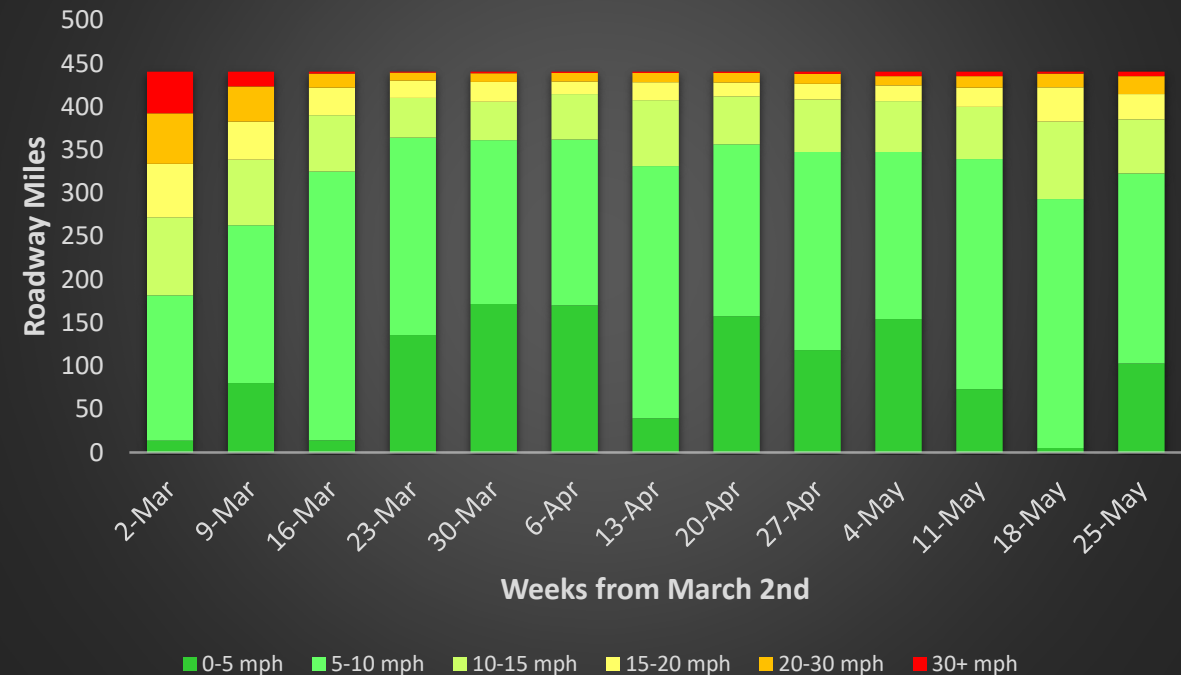
AM

PM

**Roadway Miles by Speed Reduction for Worst 30-min in AM**  
~freeway in FRANKLIN~



**Roadway Miles by Speed Reduction for Worst 30-min in PM**  
~freeway in FRANKLIN~



# AIR TRAVEL

## COVID-19

### *Regional Transportation System Impacts*



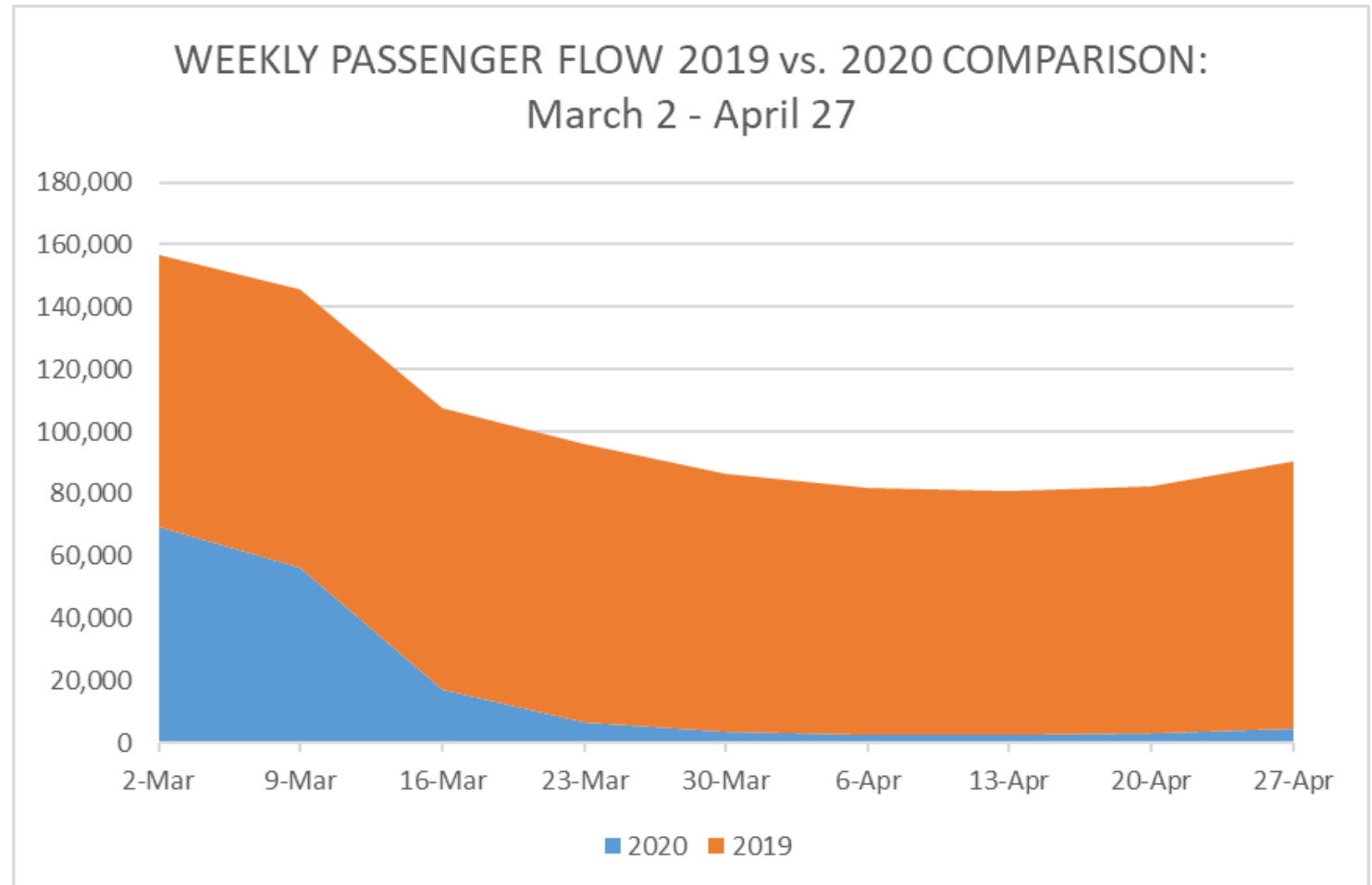
MID-OHIO REGIONAL  
**MORPC**  
PLANNING COMMISSION

# NUMBER OF PASSENGERS



MORPC

Week of	% Change, 2020 vs. 2019
2-Mar	-20%
9-Mar	-37%
16-Mar	-81%
23-Mar	-93%
30-Mar	-95%
6-Apr	-97%
13-Apr	-97%
20-Apr	-96%
27-Apr	-95%



Data Source: Columbus Regional Airport  
Authority (CRAA)

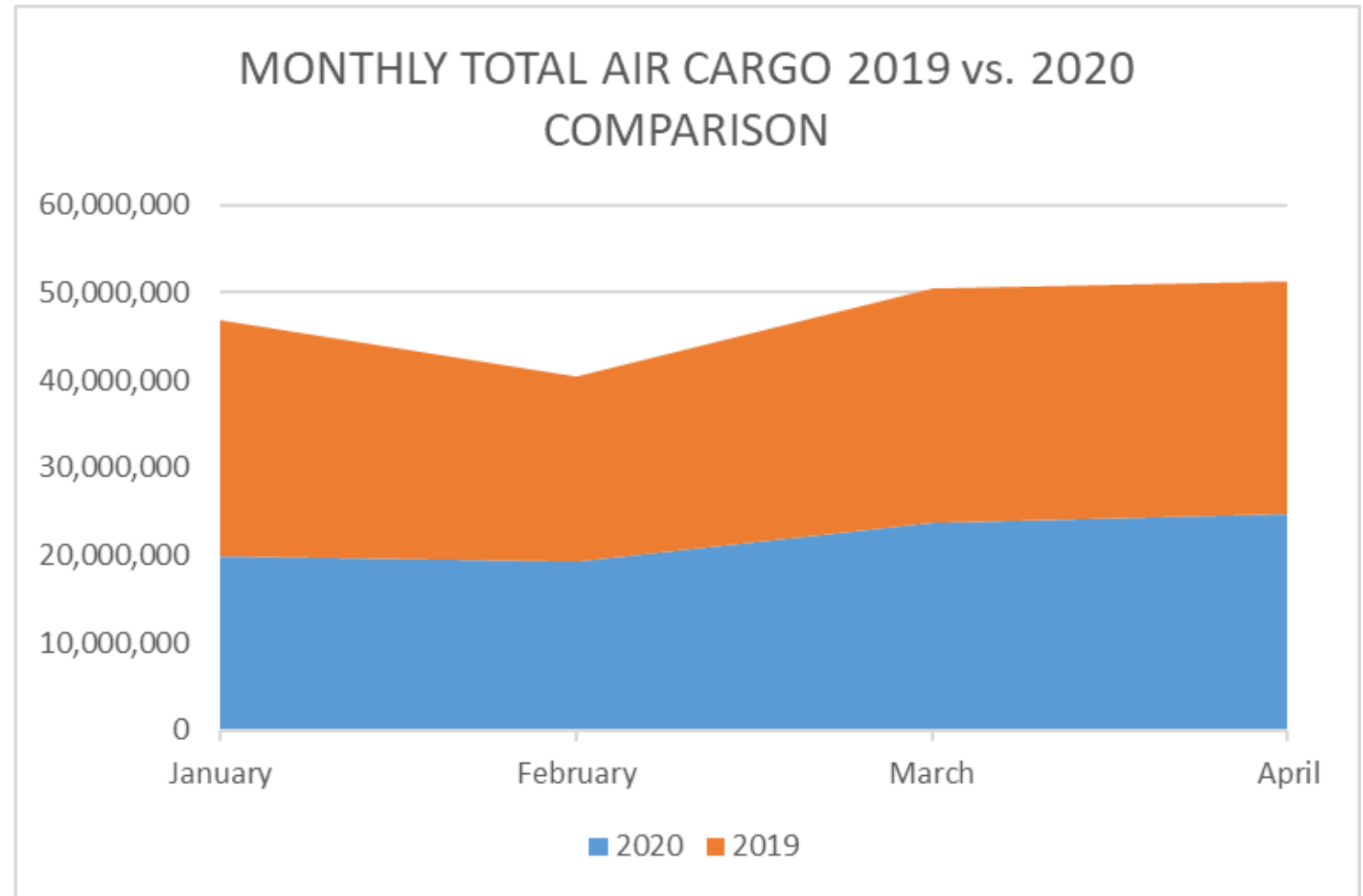
# AIR CARGO LBS (ENPLANED + DEPLANED)



MORPC

Month	% Change, 2020 vs. 2019
January	-25%
February	-8%
March	-11%
April	-7%

*Data Source: Columbus Regional Airport Authority (CRAA)*



# TRANSIT

## COVID-19

### *Regional Transportation System Impacts*



MID-OHIO REGIONAL  
**MORPC**  
PLANNING COMMISSION



# Central Ohio Transit Authority



MORPC

## *Free Fares*

- ***Fixed Route Service:***

- Scaled back service from 3/17 to 4/27 **down to 53%**
- Minor service additions have been added since 5/4 bringing service up to **57%**
- Mobility fixed route assistance service picks up passengers passed up do to **20 passenger limited buses** on high ridership routes
- Ridership
  - The past few weeks weekday ridership is at about **33%**
  - Weekend service is at about **50%**

- ***Core Mainstream service:***

- From 3/12 to 3/19 ridership **declined to 40%**
- By 3/26 ridership **declined to 30%**
- By early to mid-May ridership **increased 5% per week**
- The beginning of June ridership is back between **55 and 60%**

- ***Mainstream On-Demand:*** - Ride within one hour of request

- Ridership declined the same way during the initial panic weeks in March
- Ridership bounced back to **50% of normal** by the end of April.

# Delaware County Transit



## *Free Fares until June 1<sup>st</sup>*

- Over all DCT's ridership was **reduced to 30%** of normal
- The Green Fixed Route from the City of Delaware along US 23 to Crosswoods was suspended 3/26, it will resume on July 3<sup>rd</sup>
- All other Fixed Routes in the City of Delaware were suspended on 4/20 while Demand Response continued, these fixed routes will be suspended until December 31<sup>st</sup>
- On June 1<sup>st</sup> DCT begin a low fare FLEX call ahead pilot for service within Delaware City during the weekdays

# TRAILS

## COVID-19

### *Regional Transportation System Impacts*



MID-OHIO REGIONAL  
**MORPC**  
PLANNING COMMISSION

# Central Ohio Greenways



- Metroparks and Greenways use:
  - April 2019: 1.02 Million visitors
  - April 2020: 1.36 Million visitors
  - **35% increase**

# AIR QUALITY

## COVID-19

### *Regional Transportation System Impacts*

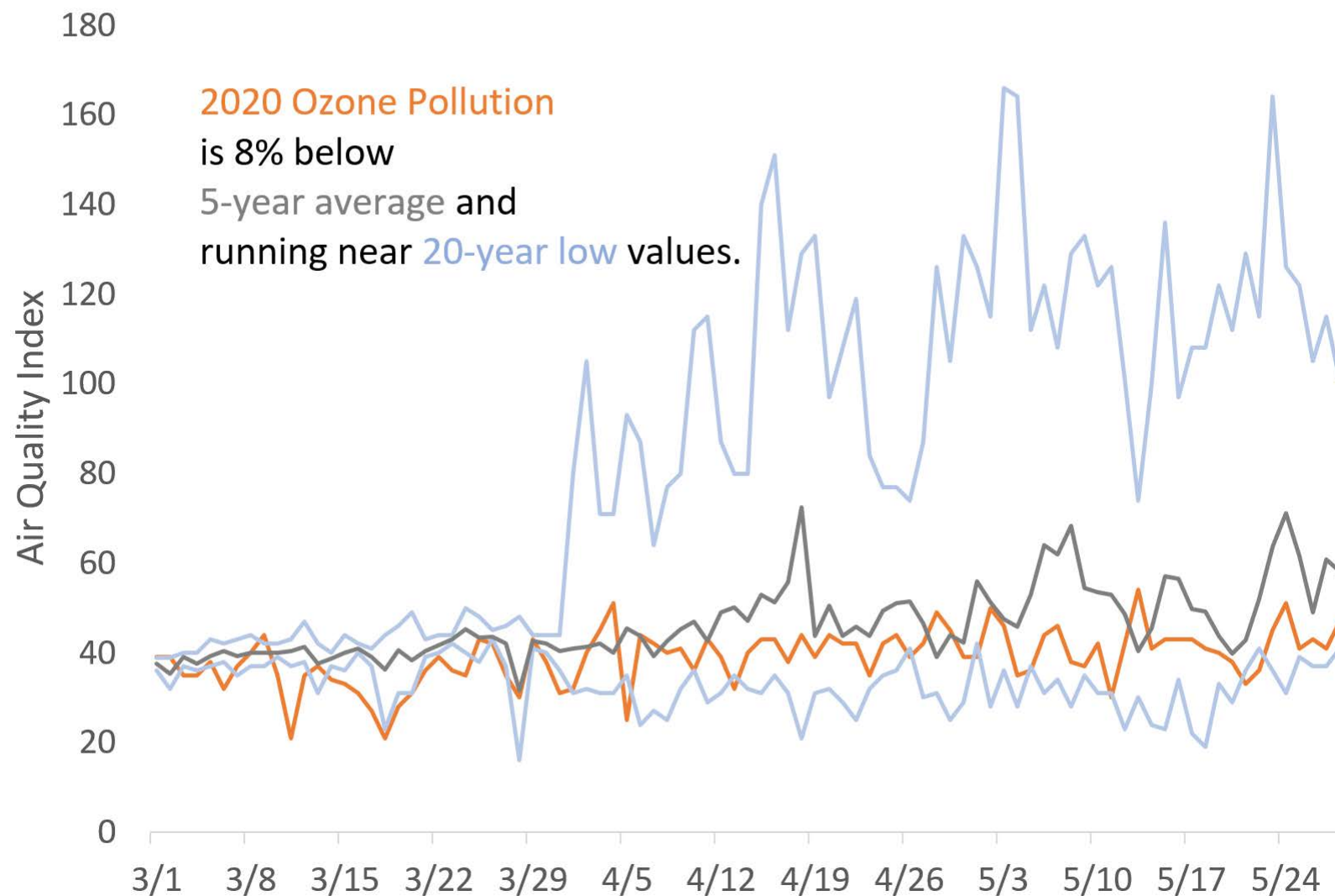


MID-OHIO REGIONAL  
**MORPC**  
PLANNING COMMISSION



MORPC

## Ozone Pollution



# Air Quality Media Coverage



MORPC

**The Columbus Dispatch**

**More Americans affected by air pollution**

**ThisWeek**  
COMMUNITY NEWS

**MORPC Matters: Air pollution hard to see but even harder to ignore**

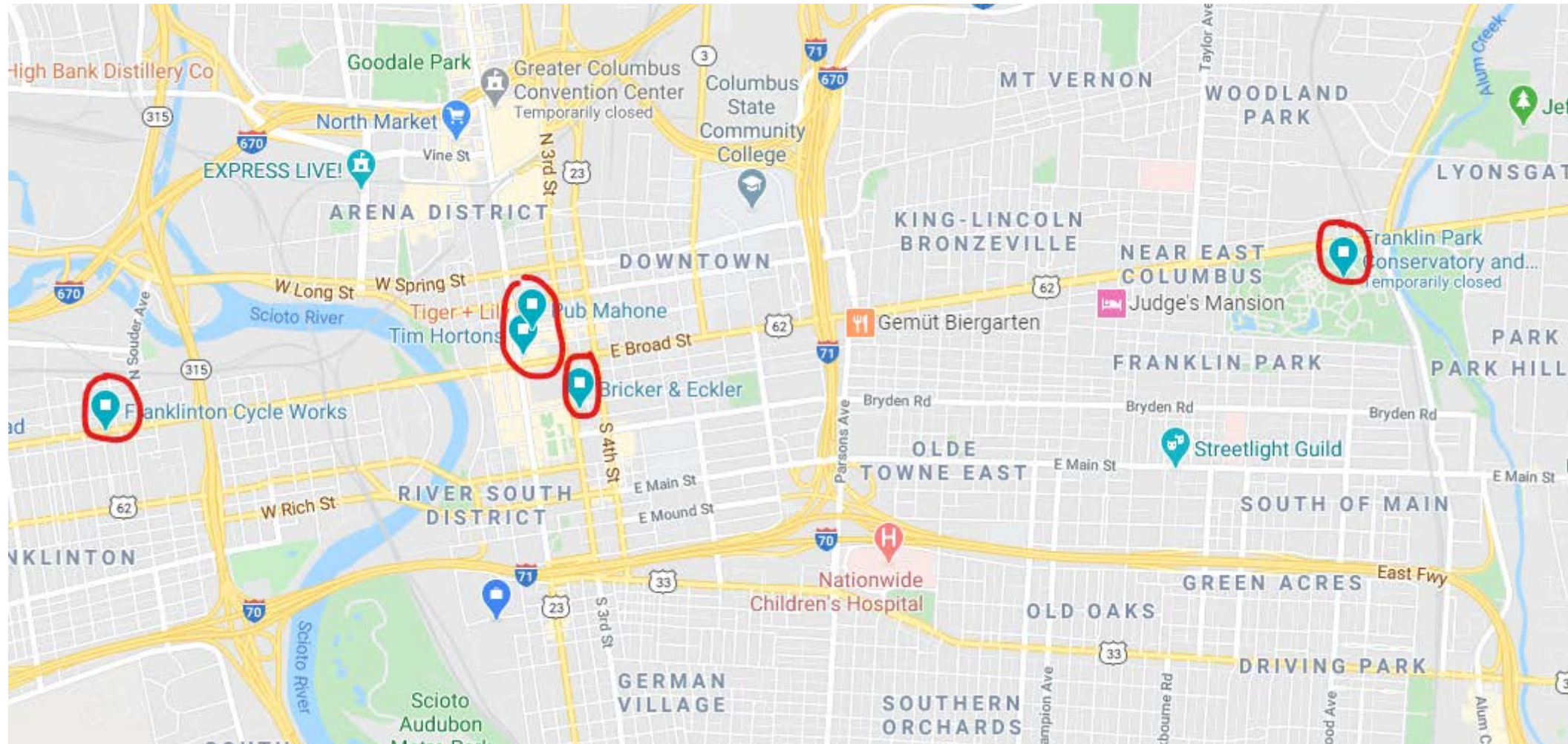
---



# Air Quality Monitoring Subcommittee



MORPC





# THEA EWING NICK GILL

*Transportation & Infrastructure Development*

## Mid-Ohio Regional Planning Commission

111 Liberty Street, Suite 100  
Columbus, OH 43215



MID-OHIO REGIONAL  
**MORPC**  
PLANNING COMMISSION