

# EWING STREET CONNECTOR

PROJECT  
PROFILE

The Ewing Street Connector project will extend South Ewing Street at its intersection with Sugar Grove Road south to Logan-Lancaster Road/Memorial Drive/Old US 33. The roadway is also a component of a planned ring roadway around the Southwest side of the City of Lancaster, diverting truck traffic from the core of the city. The road also opens up additional land for economic development.

Prioritized by:  
**FAIRFIELD COUNTY**

**Project Type:**  
Transportation - Highways & Roads

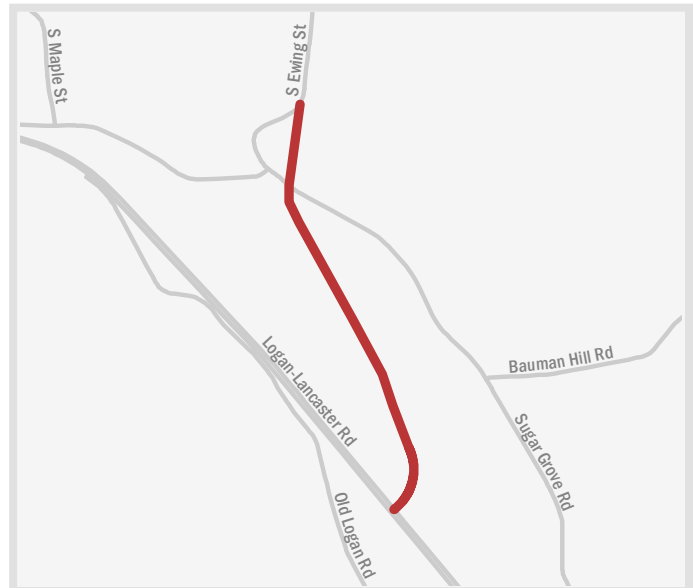
**Estimated Cost:**  
\$7.3 - \$9.7 million

**Lead Agency:**  
City of Lancaster

**Project Contact:**  
Mitch Noland, City Engineer  
mnoland@ci.lancaster.oh.us | 740-687-6614

**Partner Agencies:**  
Ohio Department of Transportation

**Jobs Supported:**  
Potential commercial or industrial development

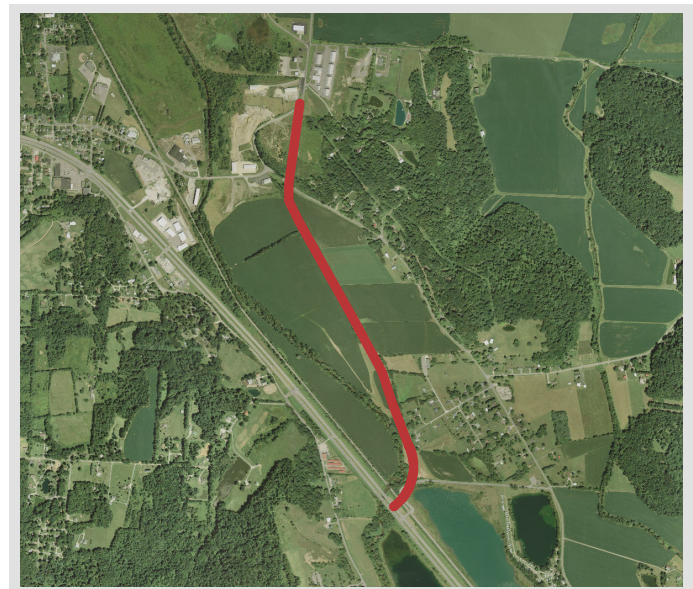


## Project Location

Ewing Street at Sugar Grove Road to Logan-Lancaster Road/Memorial Drive/Old US 33

## Project Benefits

- Maintains competitive infrastructure by relieving traffic congestion through Central Lancaster
- Adds value to the transportation system by creating redundant transportation connections between national and statewide highway corridors
- Provides for development of shovel-ready sites with transportation infrastructure
- Keeps pace with the infrastructure needs of growing companies and residents
- Aligns with existing planning documents, including 2003 City of Lancaster Thoroughfare Plan



2013 aerial view of project location

C  
O  
N  
G  
R  
E  
S  
S

HOUSE

15 - Stivers

SENATE

Brown

Portman