

DELAWARE POINT: US 36/SR 37

SUBMITTED BY:
City of Delaware

ODOT PROJECT ID:
103626

**MORPC METROPOLITAN TRANSPORTATION
PLAN PROJECT?**
Yes

COMPETITIVE ADVANTAGE PROJECT?
Yes

TOTAL PROJECT COST:
\$30 million

2019 TRAC REQUEST:
\$8 million - Construction

TRAC STATUS REQUEST:
Tier I - Construction

2019 APPLICATION TRANSPORTATION REVIEW ADVISORY COUNCIL (TRAC)

PROJECT OVERVIEW

The Delaware Point project will increase capacity by widening US 36/SR 37 from one to two lanes in each direction. The project includes replacing the Norfolk Southern railroad bridge over US 36/SR 37, and it alleviates one of the Delaware County's most congested bottlenecks. The project also includes construction of additional turn lanes at the US 36 and SR 37 intersection and the US 36/SR 37 and at the intersection of US 36/SR 37, as well as the intersection of US 36/SR 37 and SR 521.

TRAC REQUEST

The City of Delaware is requesting \$8 million in construction funding from ODOT's Transportation Review Advisory Council (TRAC) funding program. These funds are requested for state fiscal year 2022. This project previously received \$1.5 million in TRAC funding for right-of-way acquisition.

PROJECT SCHEDULE

Planning Studies:
May 2017 (complete)

Preliminary Engineering:
Aug. 2019 (not started)

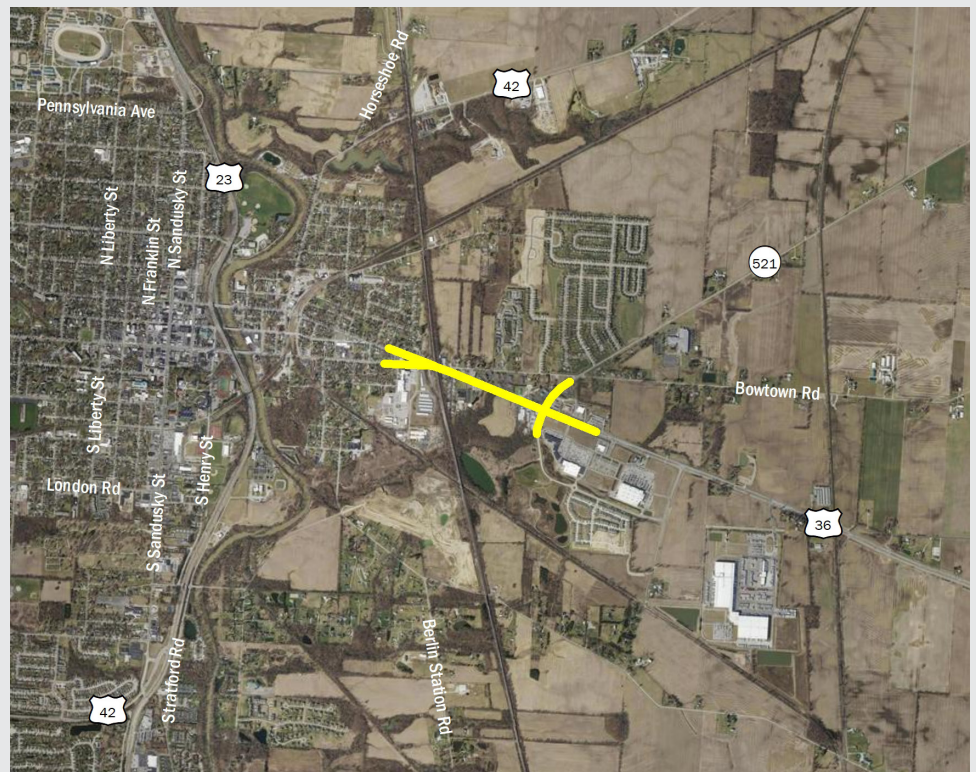
Environmental Approvals:
Nov. 2019 (in progress)

Detailed Design:
Dec. 2020 (not started)

Right-of-way Acquisition:
Sept. 2020 (not started)

Utility Relocation:
Dec. 2021 (not started)

Construction:
2022



Location of Proposed Improvements



MID-OHIO REGIONAL
MORPC
PLANNING COMMISSION