



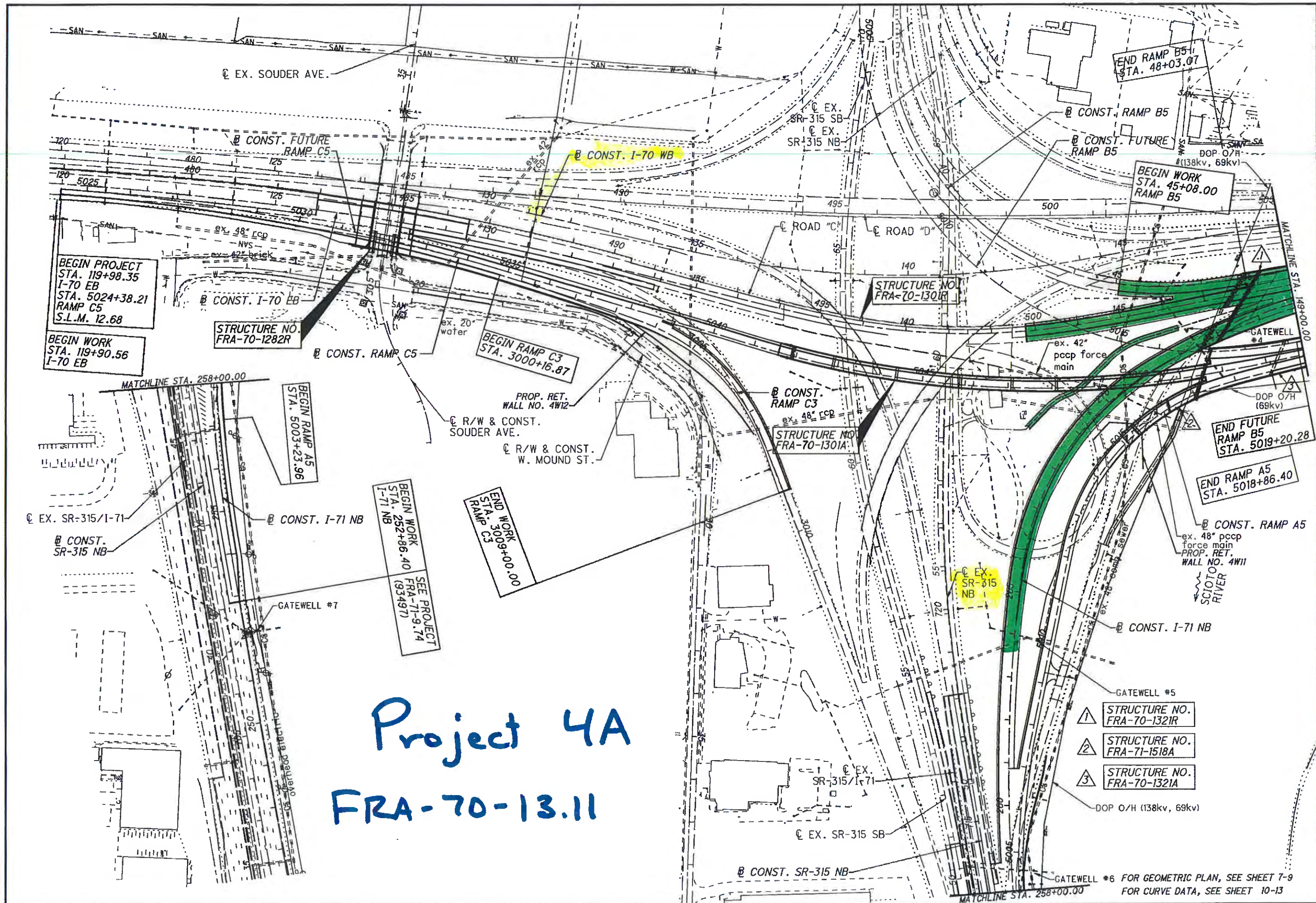
CALCULATED 0  
 ATR  
 CHECKED CWL

0 50 100 200  
 HORIZONTAL SCALE IN FEET

SCHEMATIC PLAN

FRA-70-12.68

4  
 1944



**Project 4A**  
**FRA-70-13.11**

\\ARND\A\DATA\2011\20112848\FRA-70-13.11\ROADWAY\PROJECT\4A\737208881.DGN  
 9/22/2011 9:40:48 AM  
 C:\PLOT\1311.DWG

GATEWELL #6 FOR GEOMETRIC PLAN, SEE SHEET 7-9  
 FOR CURVE DATA, SEE SHEET 10-13



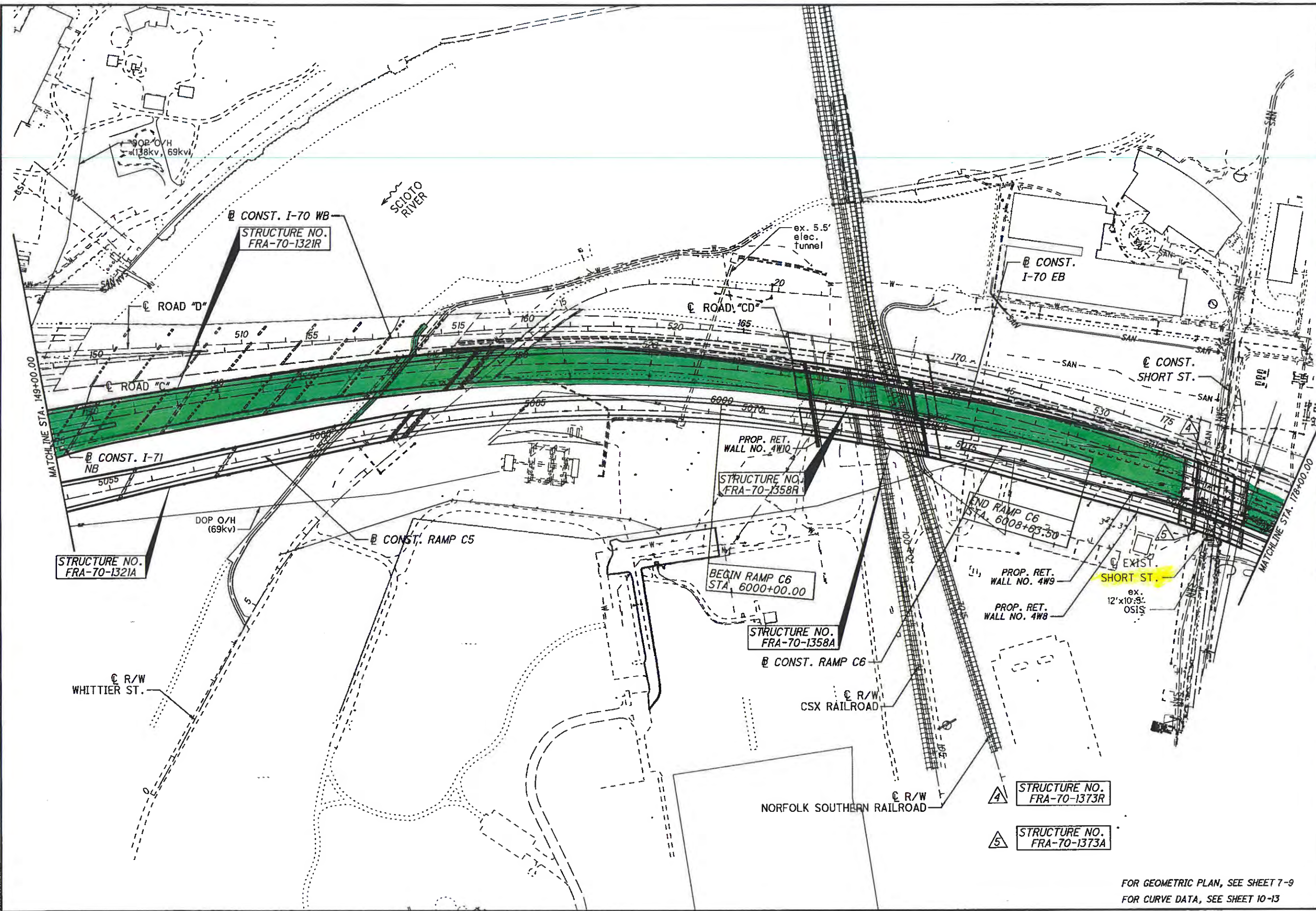
0 50 100 200  
HORIZONTAL  
SCALE IN FEET

CALCULATED  
ATR  
CHECKED  
CWL

**SCHEMATIC PLAN**

**FRA-70-12.68**

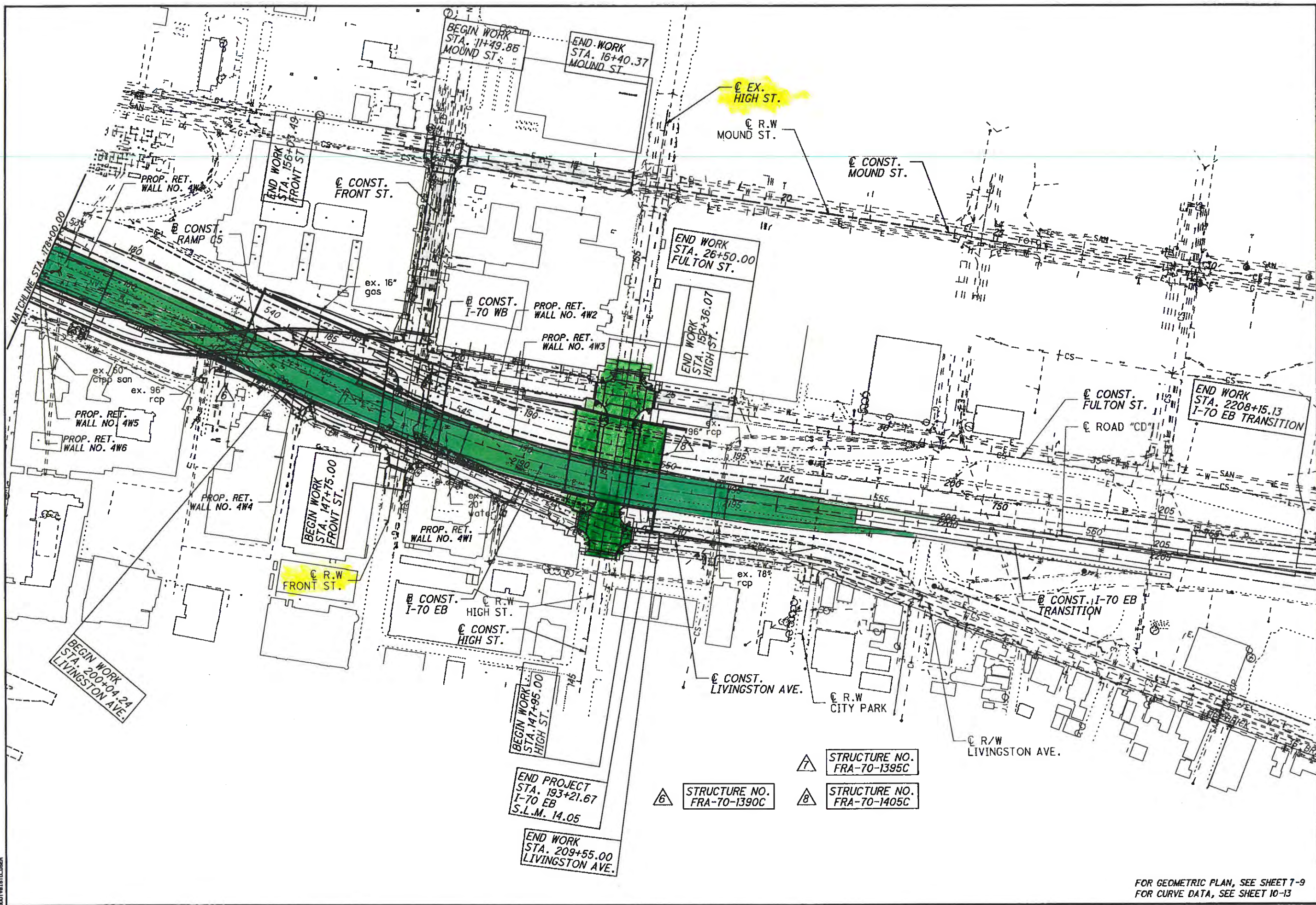
5  
1944



FOR GEOMETRIC PLAN, SEE SHEET 7-9  
FOR CURVE DATA, SEE SHEET 10-13

\\NORFOLK\DATA\2012\12\12\FRA\70-12.68\FRA\70-12.68.DWG  
9/22/2012  
10:47:17 AM  
C:\PROGRAMS\AUTOCAD\2012\12\12\FRA\70-12.68.DWG

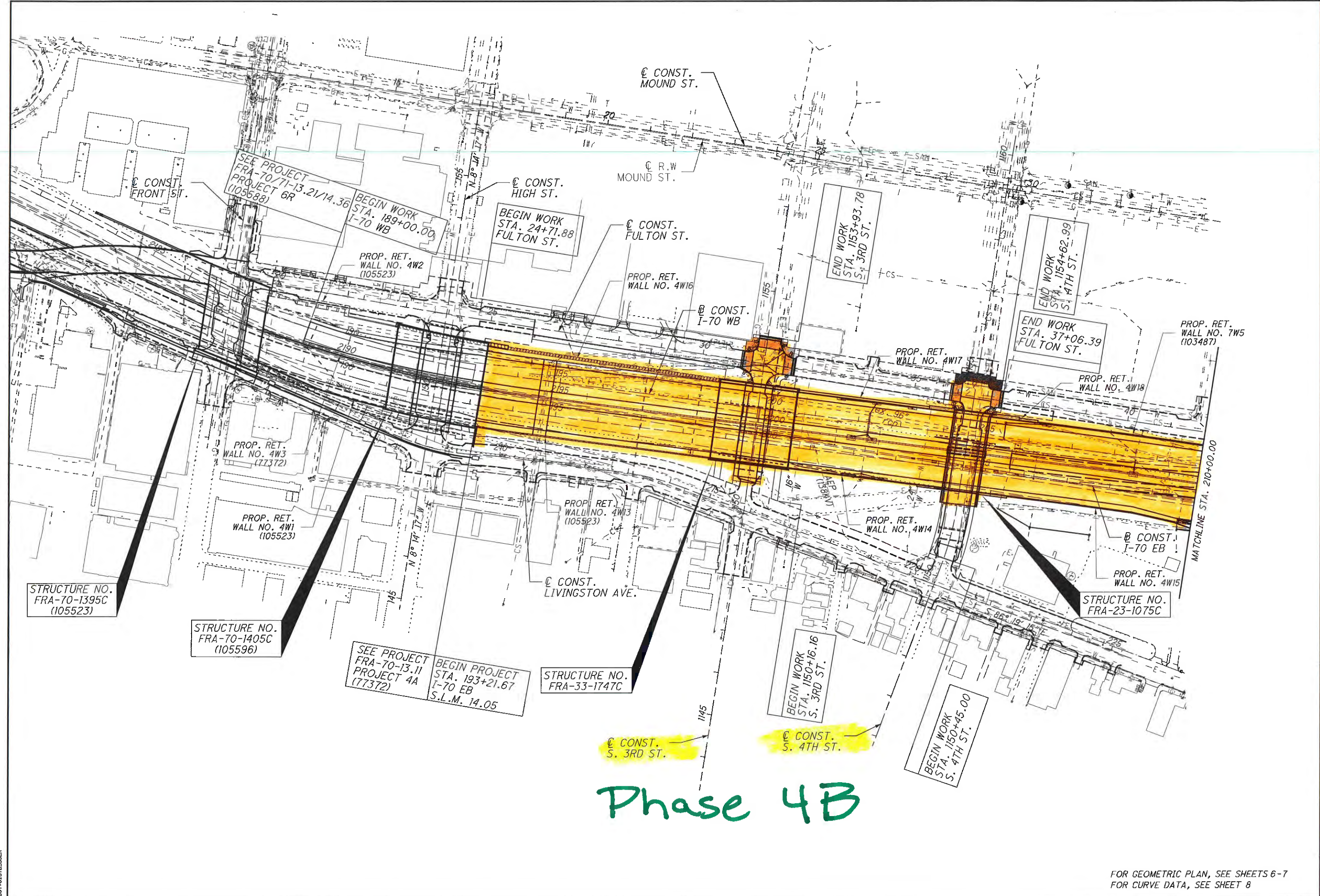
\\AP001\DATA\2012\201204\FRA\7732\ROADWAY\SHETS\772720885.DGN  
9/22/2016 3:18:38 PM  
D001V81STD.LUSER



SCHEMATIC PLAN

FRA-70-12.68

FOR GEOMETRIC PLAN, SEE SHEET 7-9  
FOR CURVE DATA, SEE SHEET 10-13



Phase 4B

SCHEMATIC PLAN

FRA-70-14.05

FOR GEOMETRIC PLAN, SEE SHEETS 6-7  
FOR CURVE DATA, SEE SHEET 8

01 2015 20150729 FRA 96053 ROADWAY SHEETS 9605306081.DGN  
 11/27/2018  
 3:47:01 PM  
 0001981JLJBER



0 100 200  
HORIZONTAL  
SCALE IN FEET

CALCULATED  
ATR  
CHECKED  
CWL

**SCHEMATIC PLAN**

**FRA-70-14.05**

5  
178



# Project 4H FRA-70-14.05C



SCHEMATIC PLAN

FRA-70-12.68

6  
1944



BEGIN WORK  
STA. 11+49.85  
MOUND ST.

END WORK  
STA. 16+40.37  
MOUND ST.

EX. HIGH ST.

R.W. MOUND ST.

CONST. MOUND ST.

END WORK  
STA. 156+03.49  
FRONT ST.

CONST. FRONT ST.

END WORK  
STA. 26+50.00  
FULTON ST.

END WORK  
STA. 152+36.07  
HIGH ST.

END WORK  
STA. 2208+15.13  
I-70 EB TRANSITION

BEGIN WORK  
STA. 147+75.00  
FRONT ST.

BEGIN WORK  
STA. 200+04.24  
LIVINGSTON AVE.

BEGIN WORK  
STA. 147+95.00  
HIGH ST.

END PROJECT  
STA. 193+21.67  
I-70 EB  
S.L.M. 14.05

END WORK  
STA. 209+55.00  
LIVINGSTON AVE.

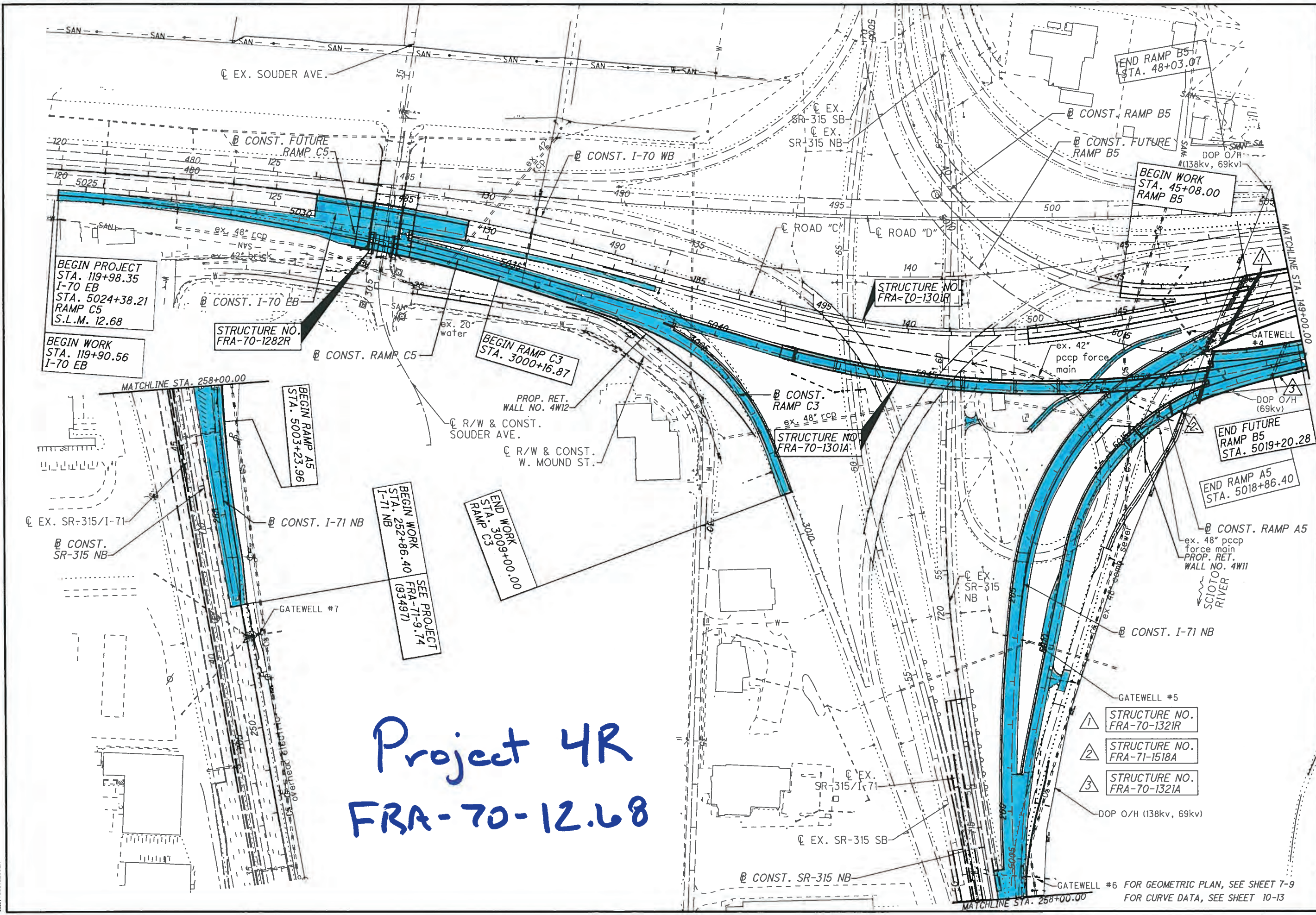
STRUCTURE NO.  
FRA-70-1395C

STRUCTURE NO.  
FRA-70-1390C

STRUCTURE NO.  
FRA-70-1405C

\\NPNR\DATA\2011\12\15\2812848\FRA\7372\ROADWAY\SHEETS\73720806.DWG  
 9/22/2016 3:05:58 PM  
 DOTV1STD.USER

FOR GEOMETRIC PLAN, SEE SHEET 7-9  
FOR CURVE DATA, SEE SHEET 10-13



\\APRIMA\DATA\2012\20120816\FRA\70\FRA\70-12.68\FRA\70-12.68\DWG\1.DWG  
 9/22/2016 3:05:46 PM  
 CORTY@ISTD.USBR

GATEWELL #6 FOR GEOMETRIC PLAN, SEE SHEET 7-9  
 FOR CURVE DATA, SEE SHEET 10-13

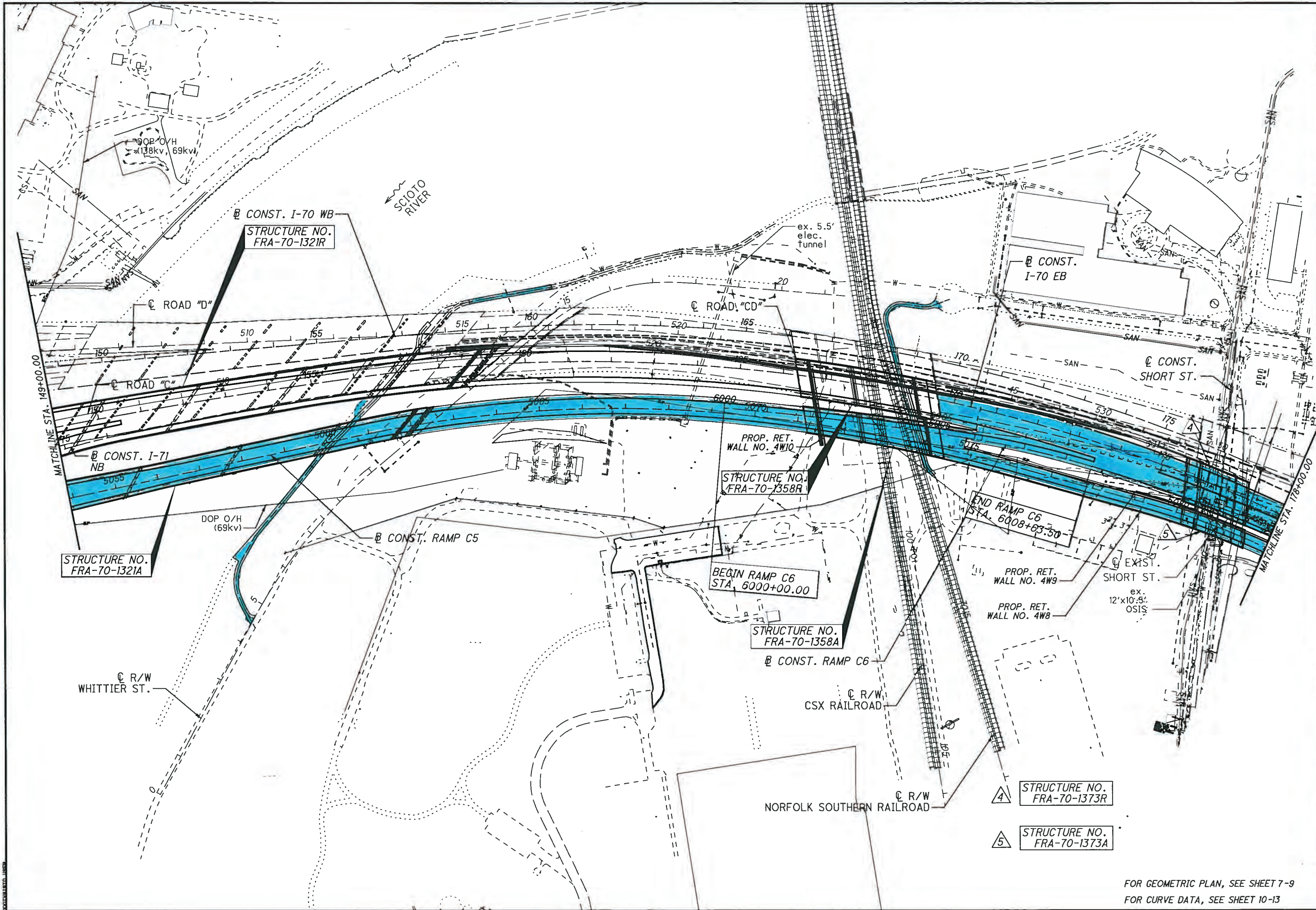


CALCULATED  
ATR  
CHECKED  
CWL

**SCHEMATIC PLAN**

**FRA-70-12.68**

5  
1944



STRUCTURE NO.  
FRA-70-1321R  
CONST. I-70 WB

STRUCTURE NO.  
FRA-70-1321A  
CONST. I-71  
NB

STRUCTURE NO.  
FRA-70-1358R  
PROP. RET. WALL NO. 4W1Q

BEGIN RAMP C6  
STA. 6000+00.00

STRUCTURE NO.  
FRA-70-1358A  
CONST. RAMP C6

END RAMP C6  
STA. 6008+03.50

PROP. RET. WALL NO. 4W9  
PROP. RET. WALL NO. 4W8

STRUCTURE NO.  
FRA-70-1373R

STRUCTURE NO.  
FRA-70-1373A

FOR GEOMETRIC PLAN, SEE SHEET 7-9  
FOR CURVE DATA, SEE SHEET 10-13

\\LANR081\DATA\70-12.68\FRA\70-12.68\FRA\70-12.68\ROADWAY\70-12.68\70-12.68.DWG  
 9/22/2016  
 3:47:47 PM





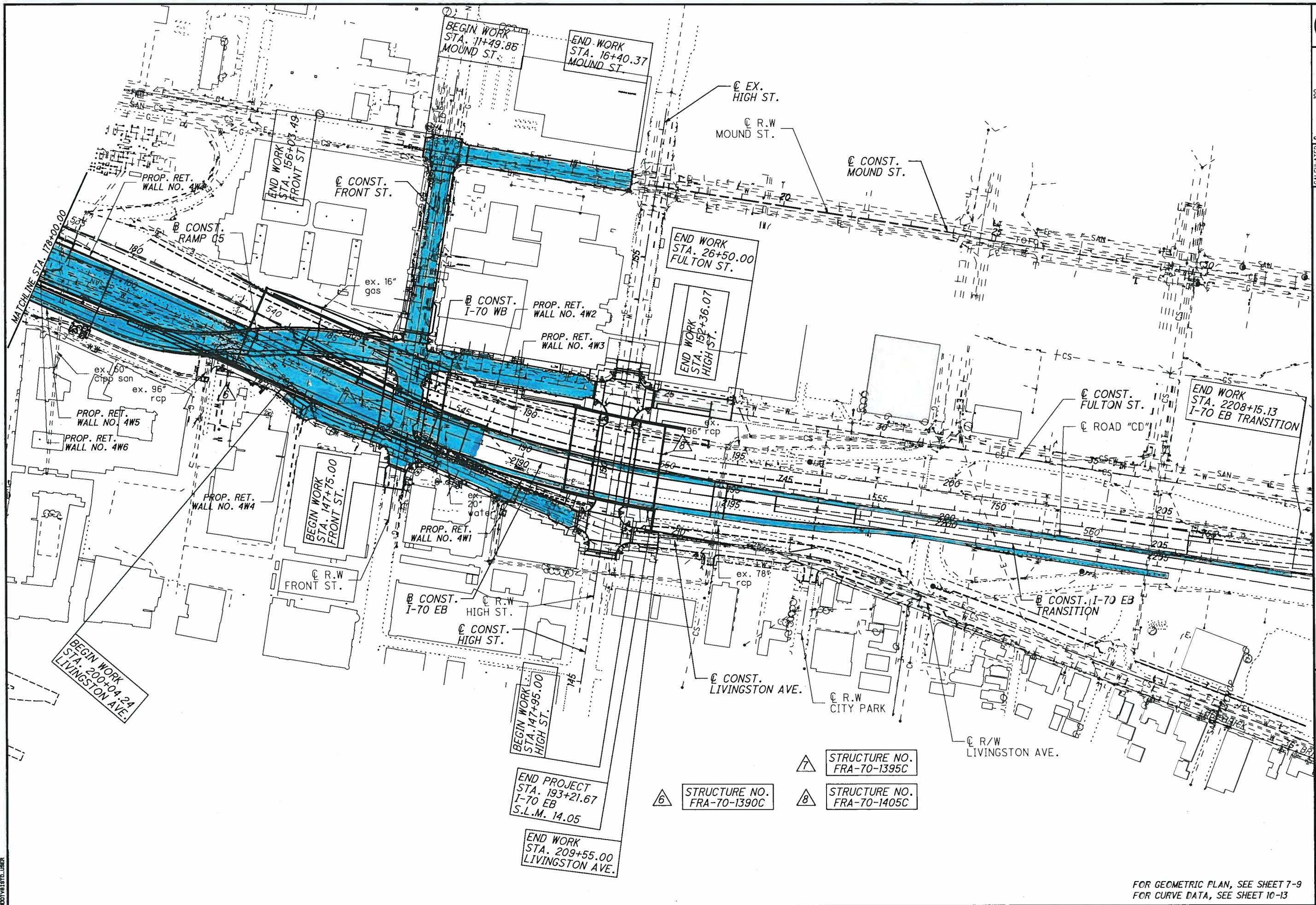
0 50 100 200  
HORIZONTAL  
SCALE IN FEET

CALCULATED  
ATR  
CHECKED  
CWL

**SCHEMATIC PLAN**

**FRA-70-12.68**

6  
1944



BEGIN WORK STA. 11+49.86 MOUND ST.  
END WORK STA. 16+40.37 MOUND ST.

END WORK STA. 26+50.00 FULTON ST.

END WORK STA. 152+36.07 HIGH ST.

END WORK STA. 2208+15.13 I-70 EB TRANSITION

BEGIN WORK STA. 200+04.24 LIVINGSTON AVE.

BEGIN WORK STA. 147+75.00 FRONT ST.

BEGIN WORK STA. 147+95.00 HIGH ST.

END PROJECT STA. 193+21.67 I-70 EB S.L.M. 14.05

END WORK STA. 209+55.00 LIVINGSTON AVE.

△ 7 STRUCTURE NO. FRA-70-1395C

△ 6 STRUCTURE NO. FRA-70-1390C

△ 8 STRUCTURE NO. FRA-70-1405C

\\KORIN\KORIN\2812\2812\48\FRA\77372\ORDWAY\SHEETS\7737208883.DGN  
9/22/2016  
3:05:58 PM  
2007V01STD.LUSER

FOR GEOMETRIC PLAN, SEE SHEET 7-9  
FOR CURVE DATA, SEE SHEET 10-13