

State of Mobility

Regional Challenges and Opportunities





Central Ohio is growing and
changing in significant ways.

Where are we now?

- LinkUS Initiative Launched
- Multiple Corridor Projects with Two Currently Underway
- Based off Insight2050 Corridor Concepts Study



Addressing 21st Century Challenges

The LinkUS priorities and the priorities of our region aim to improve conditions and maintain our competitive advantages



Equity



**Workforce
Advancement**



Innovation



Affordability



**Economic
Development**



Sustainability

*If we want to experience different outcomes,
we need to do something different*

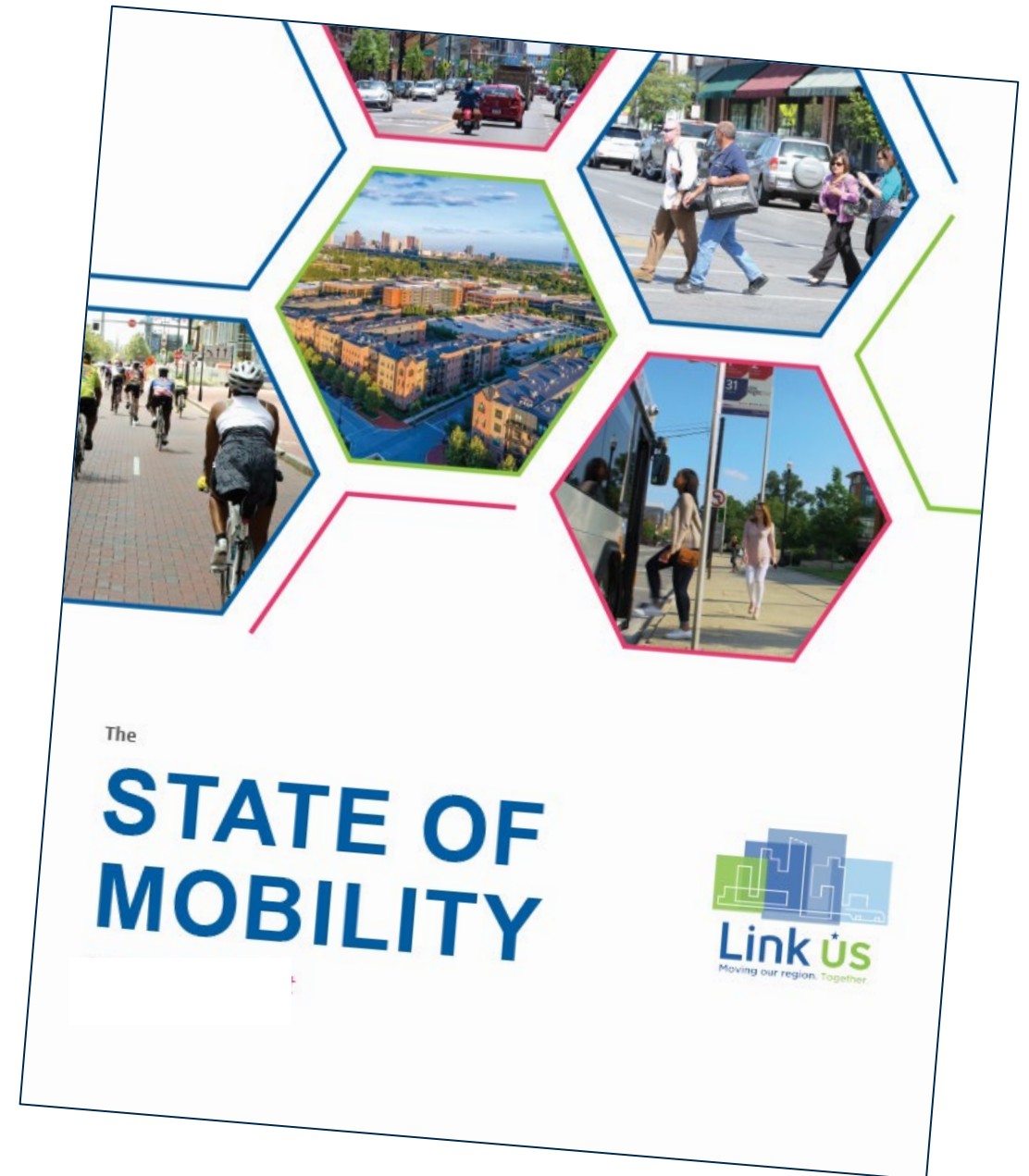
Alignment of Regional Efforts



Critical Initiatives
Desired Outcomes
Supporting Initiatives

The State of Mobility Report

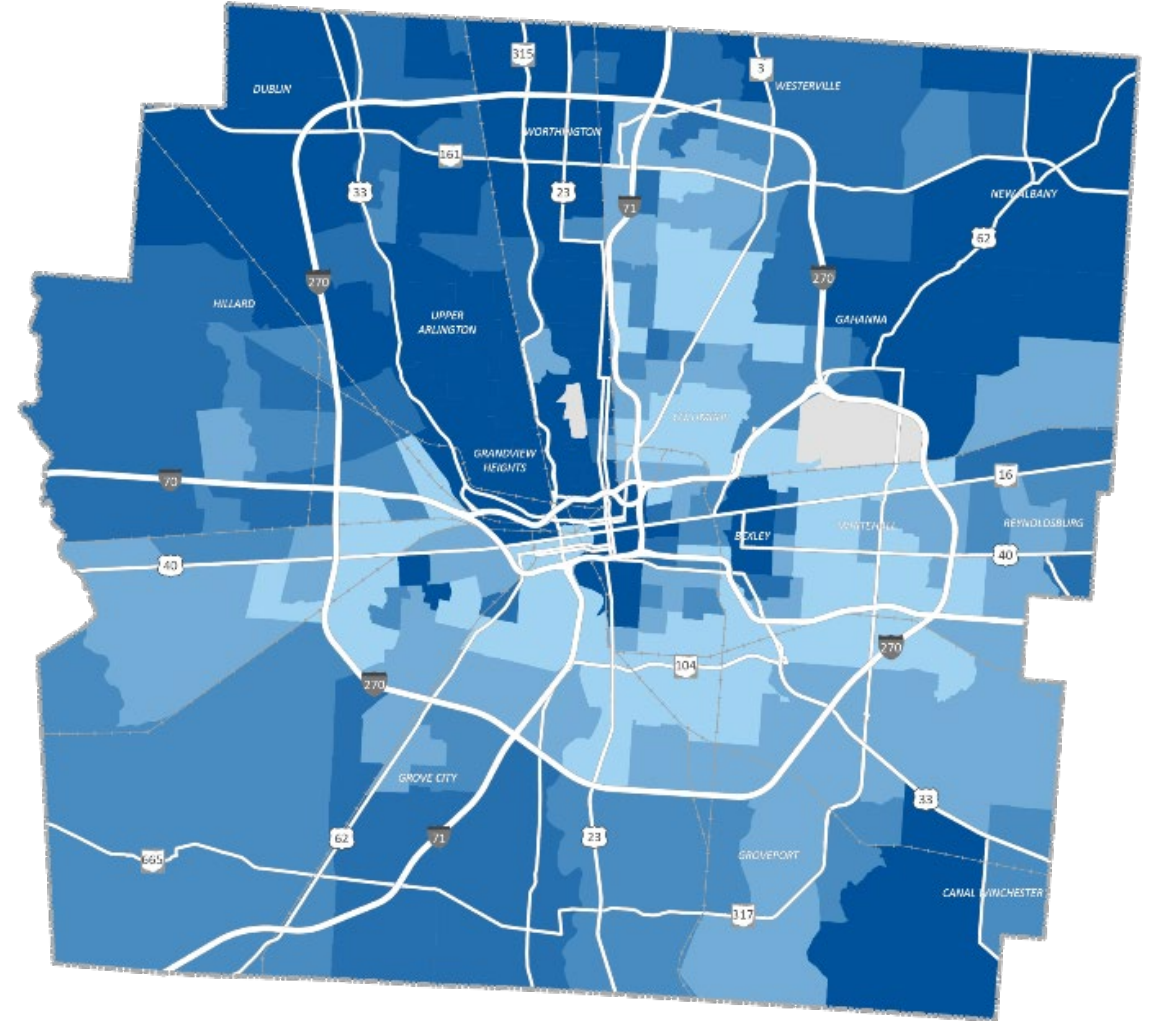
- Establishes the “WHY” for mobility investment
- Affirms existing and ongoing efforts
- Identifies our transportation needs
- Showcases those things most foundational to understanding mobility trends in our region (*not just transportation characteristics*)



Key Takeaways

- Areas of lowest opportunity are primarily low income, minority communities
- The impacts of historic redlining are still being realized today
- Socially vulnerable communities are also more likely to have individuals living with chronic diseases

*Opportunity Index
(lighter = less opportunity)*



Key Takeaways

- Our most vulnerable communities are the most cost burdened with housing and transportation
- Communities of lowest access to opportunity experience more dangerous roads
- Columbus should continue to invest in connections to parks

23%

Average Household Income Spent on Transportation
(Columbus MSA)

38,000

Households Without Vehicle Access

28%

Total Households at or Approaching Cost-Burdened

65%

Of Serious Crashes Occur on 10% of Our Streets



68%

Residents Within a 10-Minute Walk from a Park
(55% National Average)

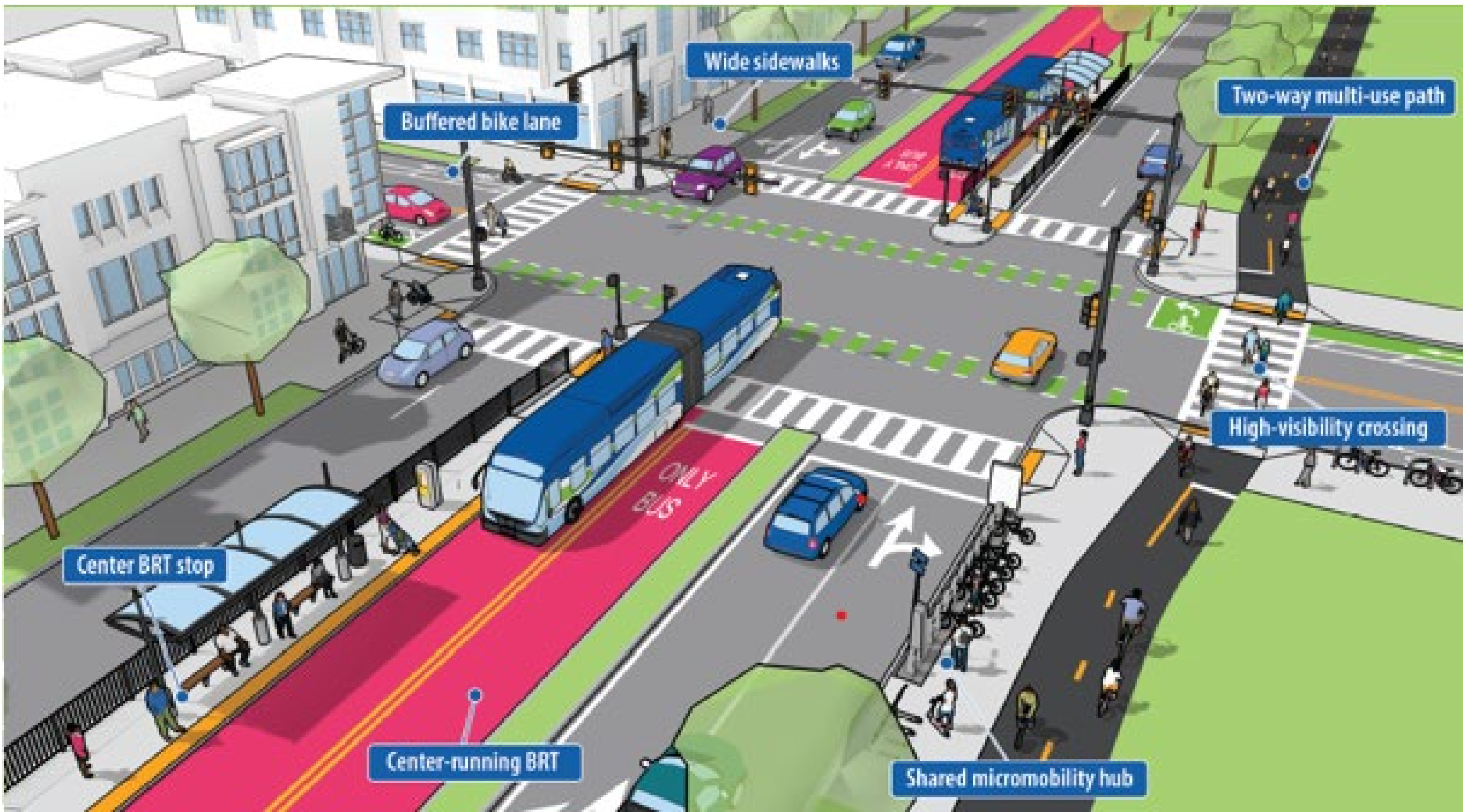
8%

City Land Used for Parks and Recreation
(15% National Median)

Key Takeaways

- Disbursement of job centers make it more difficult to connect employees with multimodal options
- There is a spatial mismatch between our jobs, our housing, and our low-income communities

59% of Jobs in our Region Take More Than 90 Minutes from Low-Income Neighborhoods



Wide sidewalks

Buffered bike lane

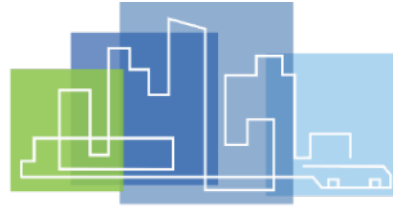
Two-way multi-use path

High-visibility crossing

Center BRT stop

Center-running BRT

Shared micromobility hub



*Publish the State of
Mobility Report*

*Establish Priority Networks
and Aligned Investments*

*Identify Implementation
Strategies*

Why

Spring '21

*Establish a shared understanding
of WHY this is important*

What

Spring '21 – Fall '21

*Identify WHAT mobility investments
make the greatest impacts*

How

Summer '21 – Early '22

*Outline HOW to accomplish
implementation of the system*