

REGIONAL CORRIDOR ANALYSIS



Mid-Ohio Regional
Planning Commission

Community Advisory Committee
Transportation Advisory Committee
Transportation Policy Committee



Partners



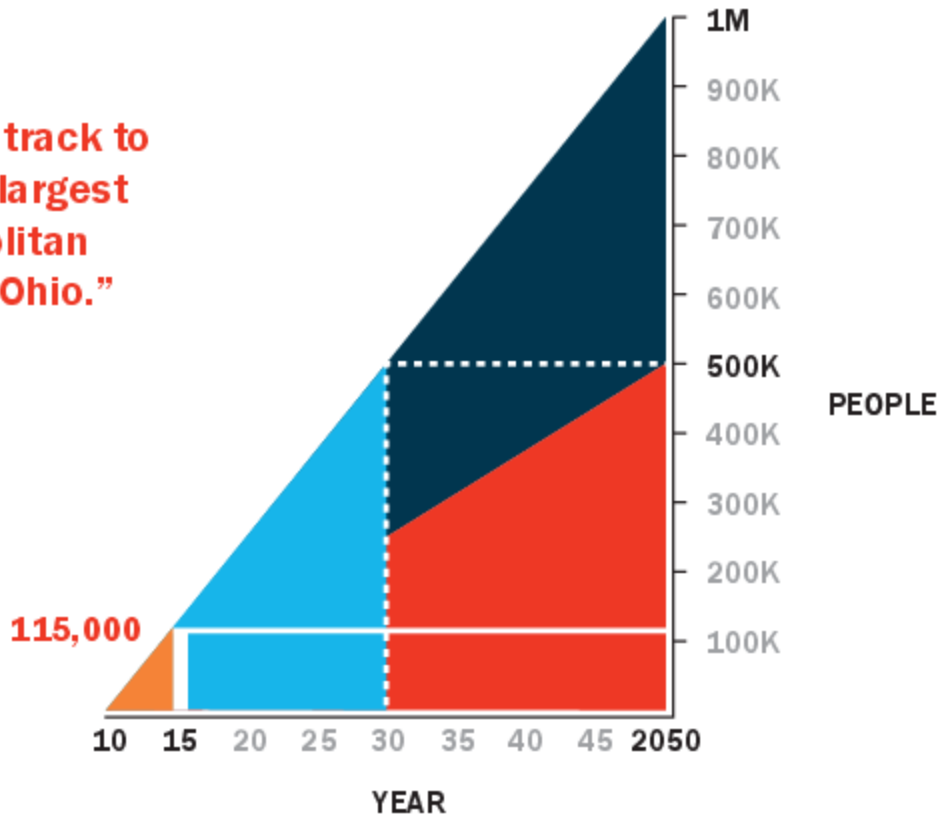
Purpose

- Use metrics to assess the impacts of compact development along selected corridors
- Study the relationship between these corridors and high-capacity transit



Actual & Projected Growth

“We are on track to being the largest metropolitan region in Ohio.”



Original Population Projections 2010 - 2050

Actual Population Growth 2010 - 2015

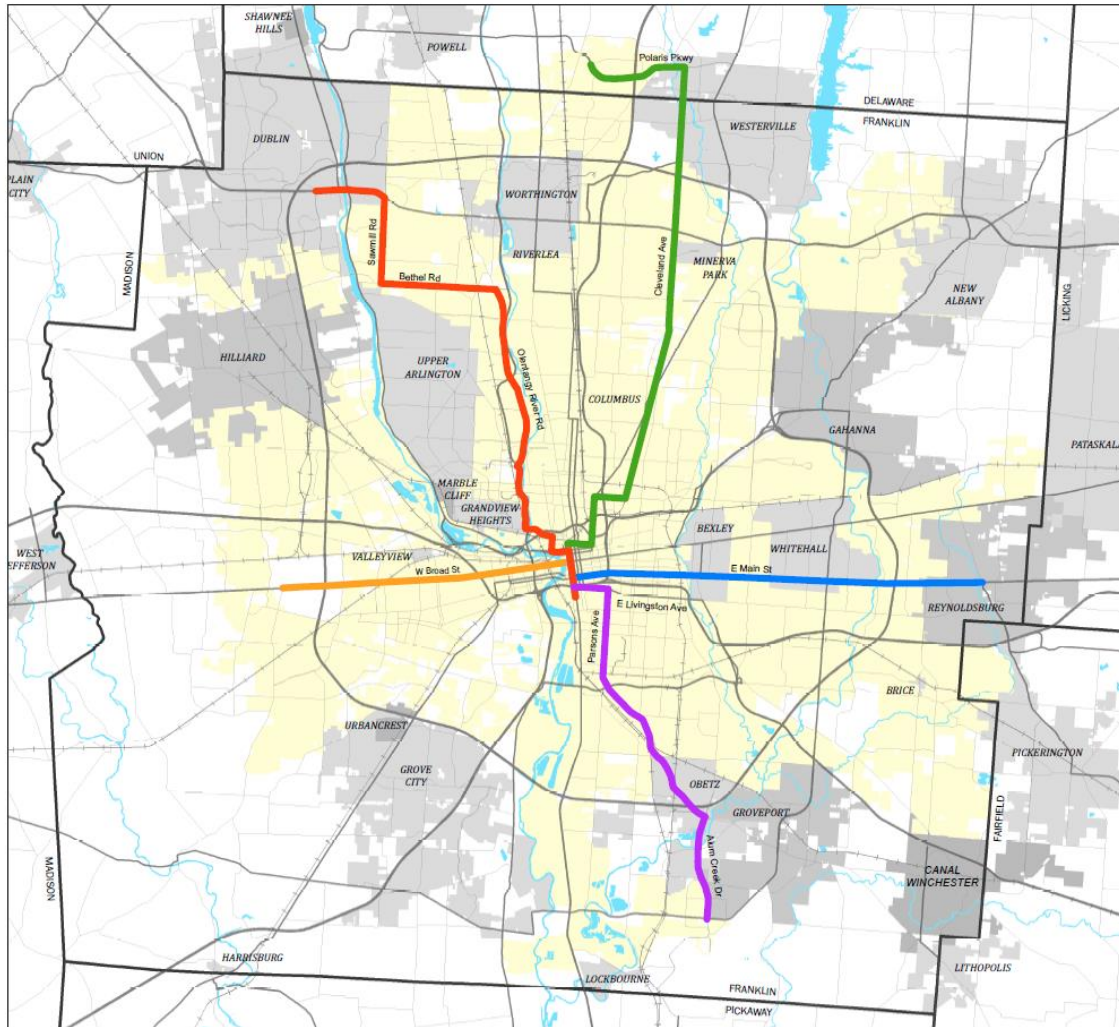
Projected Population Growth 2015 - 2030

Projected Population Growth 2030 - 2050

#SmartColumbus



Study Area & Corridors



Regional Corridor Analysis Map

Corridor Name

- Northeast Rail
- E Main Street
- Southeast
- Northwest
- W Broad Street

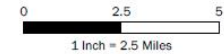
2015

	Pop	HHs	Jobs
Northeast Rail	85,605	39,167	156,515
E Main Street	68,322	32,696	114,479
Southeast	36,196	17,077	56,109
Northwest	84,673	43,172	189,720
W Broad Street	45,724	19,764	97,916

2025

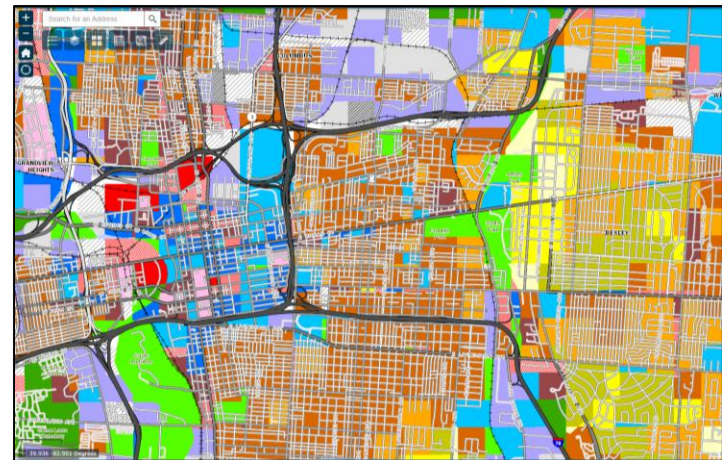
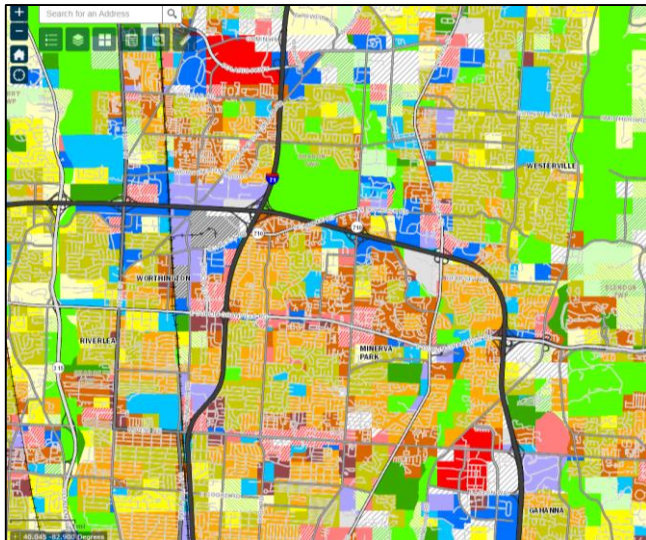
	Pop	HHs	Jobs
Northeast Rail	95,366	45,200	162,654
E Main Street	75,014	37,424	117,984
Southeast	38,778	18,818	58,610
Northwest	92,400	48,413	194,715
W Broad Street	55,443	24,936	101,217

Sources: MORPC, COTA



Expected Outcomes

- Objective & replicable evaluation criteria
- Identification of best development scenario
- Review of different types of transit technologies
- Specific implementation recommendations





Timeline/Next Steps

Key Date	Event
August 1, 2017	Proposal is posted on MORPC website for interested parties to retrieve.
September 5, 2017	Completed proposals due to MORPC by 5:00 p.m.
September 6 - 22, 2017	Evaluation of proposals
September 25 - 29, 2017	Oral presentations, if required
September 29, 2017	Evaluation Committee makes recommendation
October, 2017	Contract preparation
November 1, 2017	Project begins

Project is anticipated to take up to one year from start date.



Mid-Ohio Regional
Planning Commission

KERSTIN CARR
kcarr@morpc.org

111 Liberty Street, Suite 100
Columbus, Ohio 43215

Phone: 614.233.4163

www.morpc.org

