

# CENTRAL OHIO GREENWAYS DEVELOPMENT

PROJECT PROFILE

The Central Ohio Greenways (COG) is a paved trail network spanning +230 miles throughout Central Ohio. Over 12 million miles are traveled on these trails annually, providing economic, quality of life, and health benefits to the community. RAPID 5 joined this effort in 2019 and works with the diverse COG Board to oversee a vision of 500 additional trail miles. COG and RAPID 5 will mobilize investments and activate a movement around our greenspaces, embedding nature into our future development and way of life.

**Project Type:** Transportation - Active Transportation

**Estimated Cost:** > \$250 million

**Lead Agency:** Central Ohio Greenways (COG) Board, a MORPC Committee

**Project Contact:** Melinda Vonstein, Mid-Ohio Regional Planning Commission [mvonstein@morpc.org](mailto:mvonstein@morpc.org) (614) 288-2663

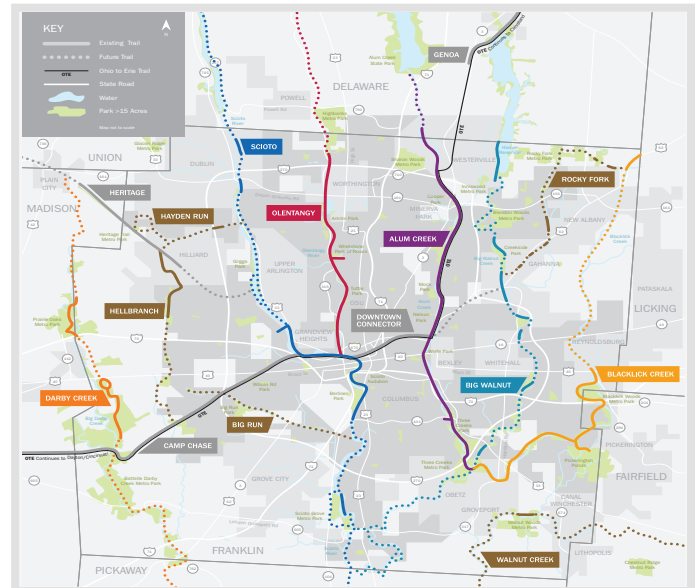
**Partner Agencies:** Ohio Department of Transportation, Ohio Department of Natural Resources, local governments agencies (IE: park districts, county engineer offices), RAPID 5 & other non-profits

**Economic Impact:** Expansion of critical bike/pedestrian infrastructure has an estimated \$350 million in total economic activity in Franklin County

## Regional Benefits

- **Health & Well-being:** Creates community conditions where all residents thrive and contribute to their fullest potential
- **Recreation:** Inspires play, joy, a sense of adventure, and the awe of being in nature
- **Environmental Stewardship:** Supports sustainable and ecologically-sound practices
- **Economic Vitality:** drives new business creation, prosperity, and tourism/trail town opportunities in rural and urban spaces
- **Equitable Access:** Expands access and mobility options to residents by increasing the number of people with biking and walking access to trails from 25% to nearly 50% of Franklin County's population

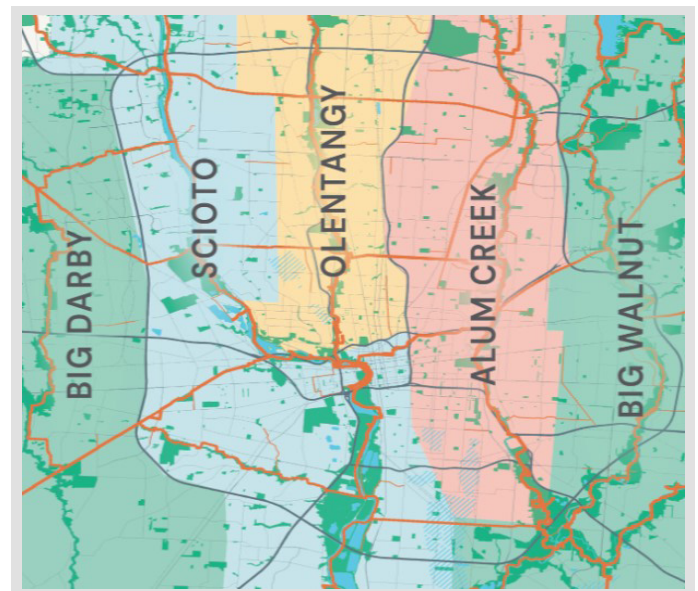
Prioritized as a project of  
**REGIONAL SIGNIFICANCE**



## Project Location

This map visualizes Central Ohio's existing trails and how they interconnect with each other.

## RAPID 5



Above outlines RAPID 5's area of focus and demonstrates how these trails interact with the various Central Ohio watersheds. RAPID 5's goal is to create the largest inter-connected park system in the United States.

CONGRESS

HOUSE

2 - Wenstrup

3 - Beatty

4 - Jordan

12 - Balderson

15 - Carey

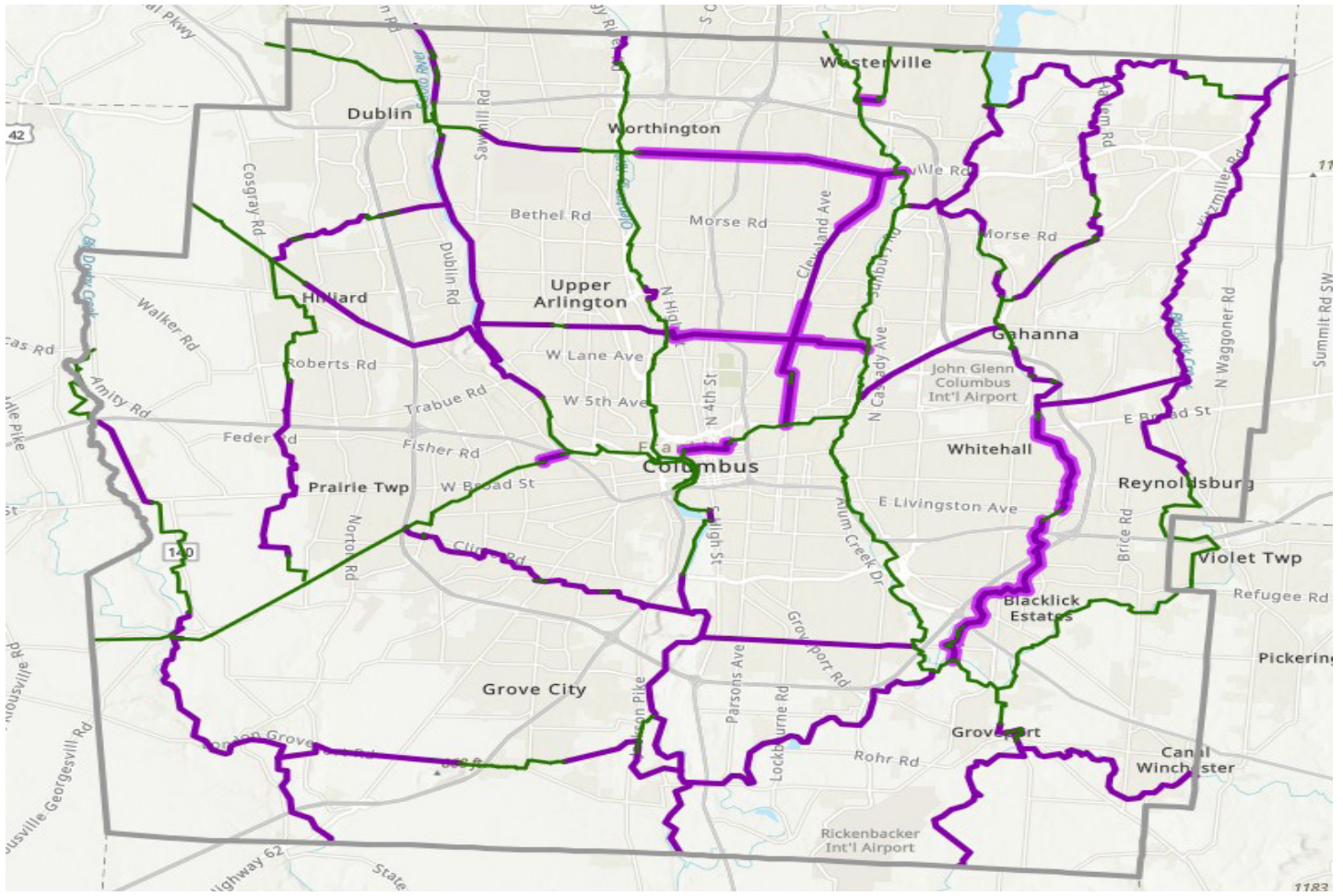
SENATE

Brown

Vance

# RAPID 5 GREENWAYS DEVELOPMENT

PROJECT  
PROFILE



Trail Segment	Description
Capital Trail	Completes a critical gap in the trail network within the economic core and links the three most highly used trails (Scioto, Alum Creek, and Olentangy trails)
Linden Greenline	Takes advantage of an abandoned rail corridor providing a north-south connection through the Linden neighborhood, a historically underserved neighborhood severely impacted by redlining and highway development
Hudson Urban Greenway	Provides an east-west connection and has the potential to aid in activating economic activity along an underutilized commercial corridor
Big Walnut Creek	Connects suburban neighborhoods to outdoor recreation and transportation opportunities
SR 161 Trail	Takes advantage of extra right-of-way capacity to diversify transportation options and provides outdoor recreation opportunities in an area with limited parks
Camp Chase Gap	Completes a critical gap in the popular multi-county, statewide, Ohio-to-Erie Trail as well as the national, Great American Rail Trail
Heritage Trail	Takes advantage of an underutilized rail corridor and connects the west side of the region to the new Quarry Metro Park and Downtown
Scioto Trail	Revitalizes underutilized space and connects the newly proposed Great Southern Metro Park to downtown