



# COMMUNITY-BASED PLANNING ASSISTANCE

AUGUST 2023

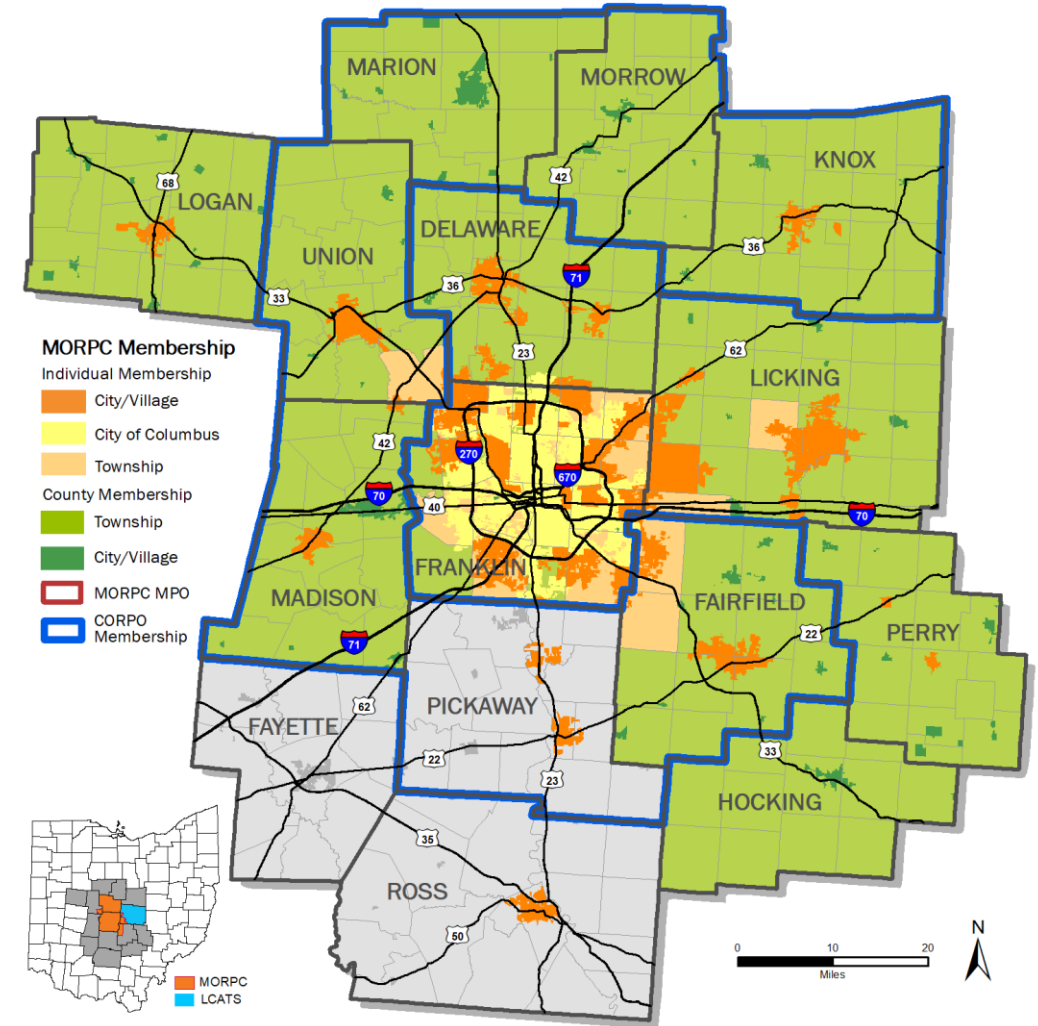


MID-OHIO REGIONAL  
**MORPC**  
PLANNING COMMISSION

# BACKGROUND / ISSUE



- **HISTORIC GROWTH IN CENTRAL OHIO**
  - Region of 3.15M People by 2050
- **UNIQUE / SITUATIONAL GROWTH**
  - Intel Development (New Albany/Licking County)
  - Honda Investments (Marysville/Union County/East Liberty/Logan County)
  - LG Energy Solutions Facility (Washington Court House/Jeffersonville/Fayette County)
- **CONSTRAINED LABOR MARKET**
  - High turn-over rates
  - Increased competition for talent
- **LIMITED-RESOURCE COMMUNITIES**
  - Planning occurs before investment
  - Limited Resources make planning difficult



# THE SOLUTION



MORPC

## COMMUNITY-BASED PLANNING ASSISTANCE (CBPA)

COMMUNITY NEEDING ASSISTANCE

COMMUNITY FILLS OUT CBPA REQUEST

IS THE PROJET  
RELATED TO ACTIVE  
TRANSPORTATION?

YES

NO

TECHNICAL ASSISTANCE PROGRAM

DOES THE NEED  
REQUIRE FULL-TIME  
ASSISTANCE?

NO

YES

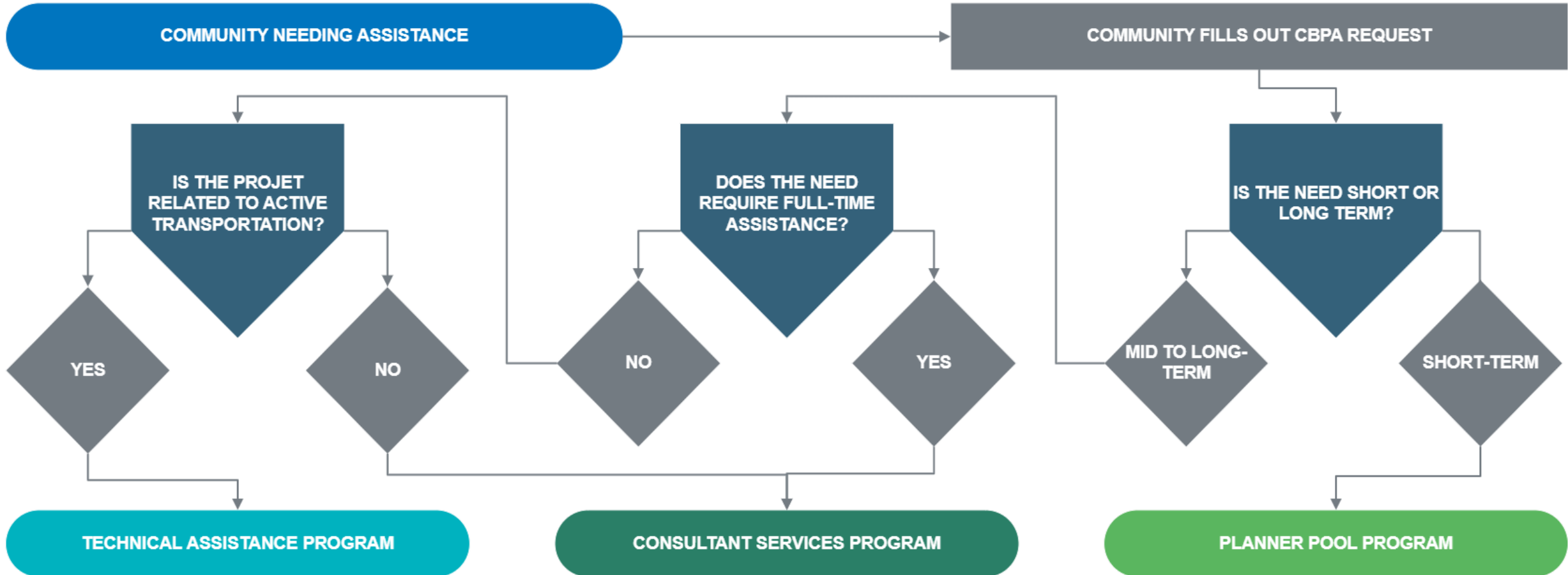
CONSULTANT SERVICES PROGRAM

IS THE NEED SHORT OR  
LONG TERM?

MID TO LONG-  
TERM

SHORT-TERM

PLANNER POOL PROGRAM



# TECHNICAL ASSISTANCE PROGRAM

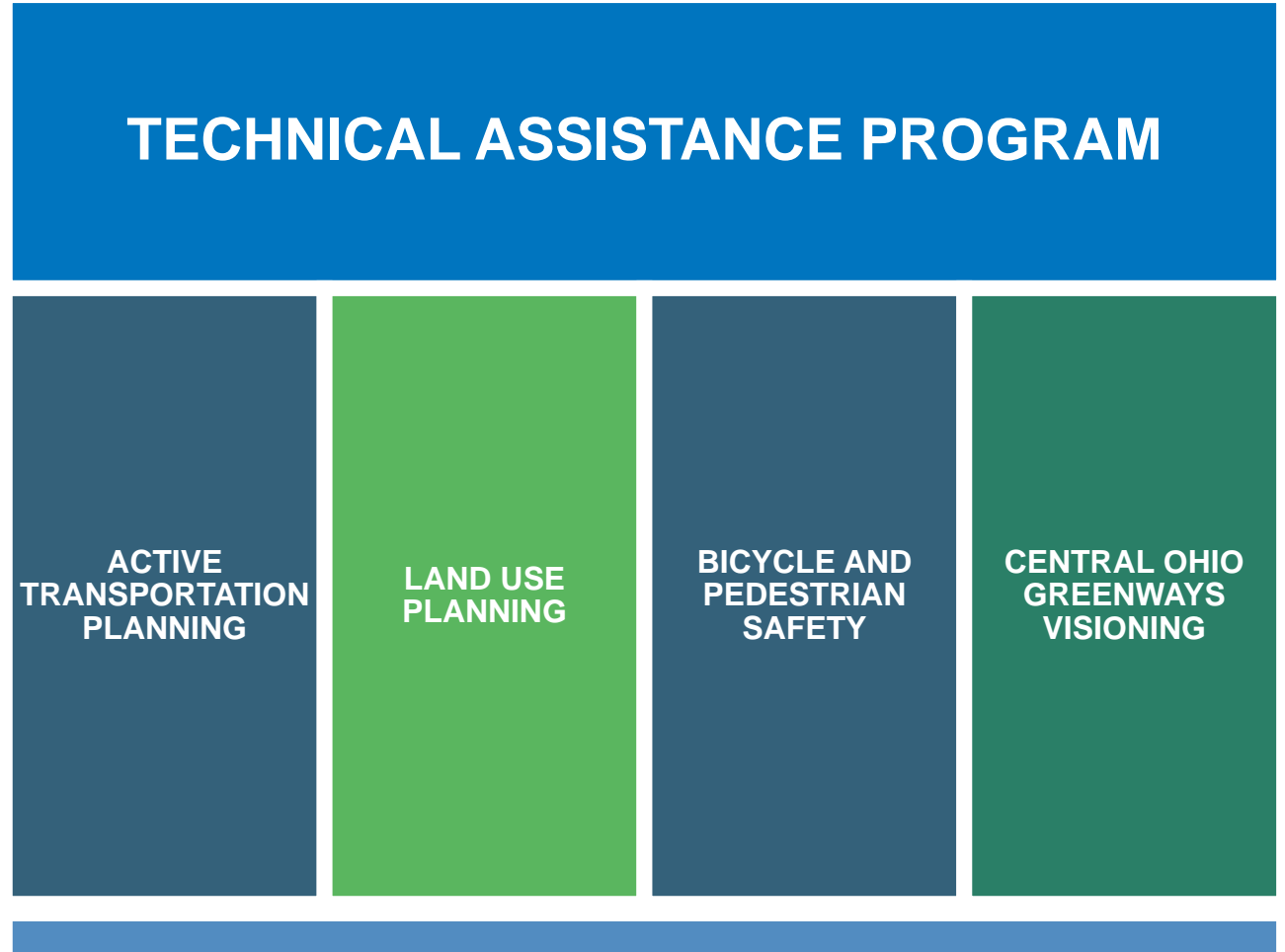


MORPC

## *AN EXEMPLARY PROGRAM PROVIDING NEEDED ASSISTANCE*

- **PURPOSE**
  - Advance Goals and Strategies of the MTP
- **ELIGIBLE SERVICES**
  - Related to Specific Strategies within the MTP
    - System Management
    - System Development
    - Transportation-System Related

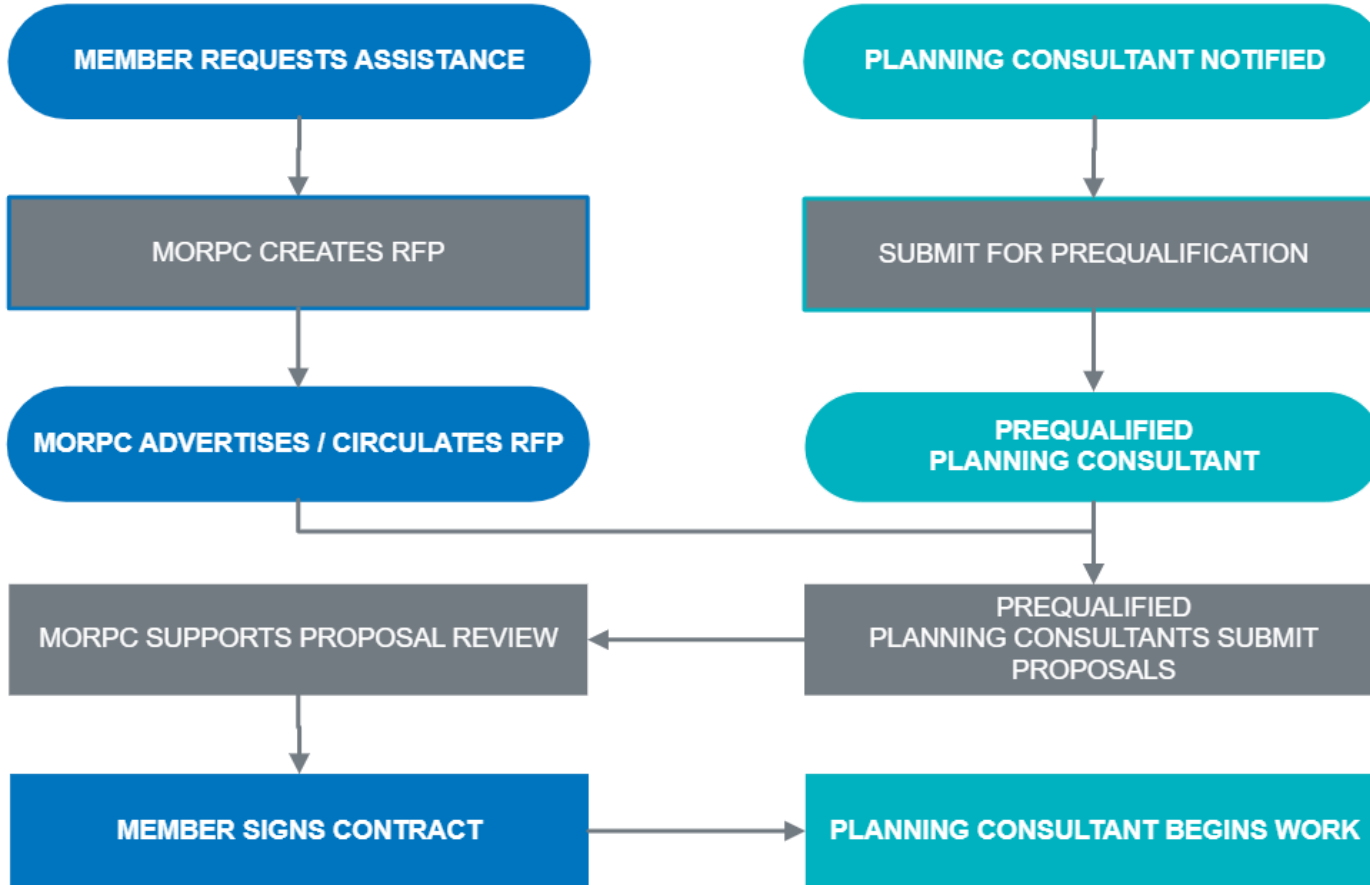
*EX. "BP 5 – Implement the Active Transportation Plan to Create High Comfort Regional Pedestrian and Bicycle Transportation Networks"*



# CONSULTANT SERVICES PROGRAM



## CONSULTANT SERVICES PROGRAM



## *SERVICE FOCUS*

- Comprehensive Plan Updates
- Zoning Code Updates

## *COMMUNITY BENEFITS*

- Free-Up Staff Time
- Additional Exposure for RFPs

## *CONSULTANT BENEFITS*

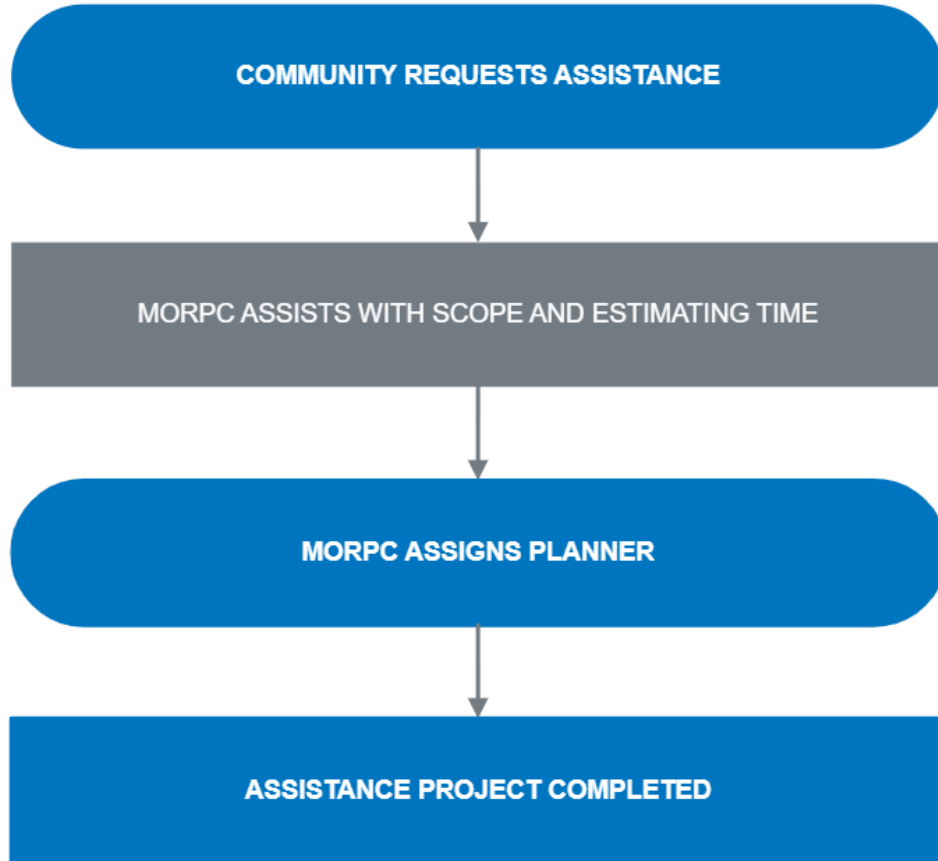
- Streamlined RFP Process
- Central Repository for RFPs

# PLANNER POOL PROGRAM



MORPC

## PLANNER POOL PROGRAM



## *SERVICE EXAMPLES*

- Development reviews
- Permit & plan reviews
- Quick zoning updates
- Assist with short specialized projects
- Fill temporary staffing gaps

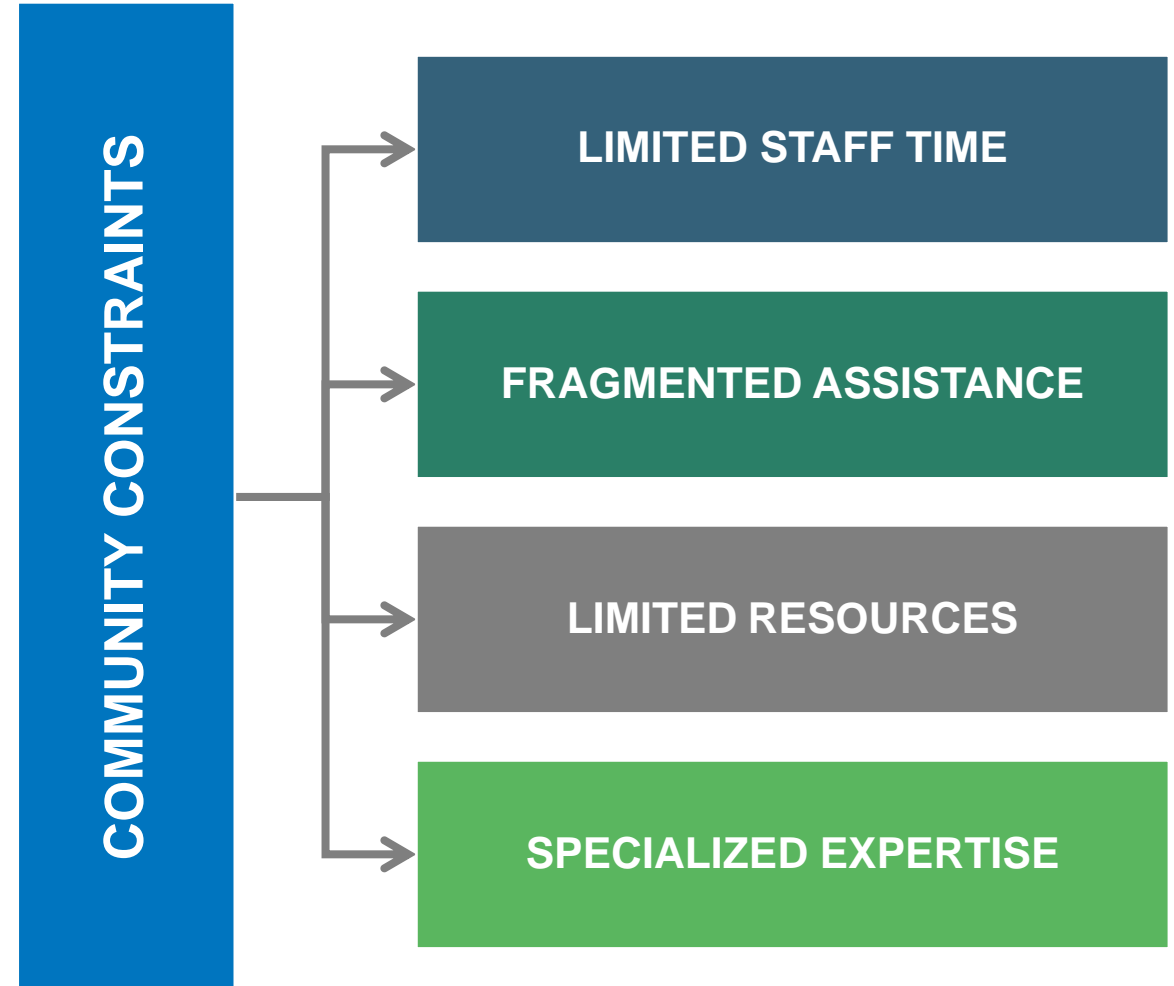
## *COMMUNITY BENEFITS*

- Free-Up Staff Time
- Additional Expertise
- Fill Staffing Gaps
- Short-Term Relief

# VALUE PROPOSITION



- **MULTI-FACETED APPROACH**
  - Long and Short-Term Needs
  - Large and Small-Scale Project Assistance
  - Connects Resources
- **LONG-RANGE PLANNING GUIDANCE**
  - Programs Work Together
  - “What’s the Best Way to Get This Done?”
- **CONNECTING RESOURCES**
  - Communities to Consultants
  - Specialized Staff to Assist
  - Responsive for Quick Assistance



# JONATHAN MILLER, MPA, AICP, GISP

*Senior Planner*

Mid-Ohio Regional Planning Commission

**T:** 614.233.4219

[jmiller@morpc.org](mailto:jmiller@morpc.org)

111 Liberty Street, Suite 100

Columbus, OH 43215



MID-OHIO REGIONAL  
**MORPC**  
PLANNING COMMISSION