

# 2024 - 2050 METROPOLITAN TRANSPORTATION PLAN UPDATE

Nick Gill, MORPC



MID-OHIO REGIONAL  
**MORPC**  
PLANNING COMMISSION



# WHAT IS THE METROPOLITAN TRANSPORTATION PLAN (MTP)?

- Identifies regional transportation strategies and projects
- Long-range (20+ years)
- Fiscally constrained
- Formal document submitted to ODOT and USDOT every 4 years



# WHY IS THE MTP IMPORTANT?

- **Central Ohio is growing**
  - Demographics are changing
  - Development is changing
  - Demands on the transportation system are changing
- **Transportation projects must be on MTP to be eligible for federal funding**
  - Formula & Discretionary (BIL)
  - Guides the work of MORPC and regional and local planning partners



## By guiding investment in transportation and mobility infrastructure and services in Central Ohio, the MTP identifies strategies to advance the following six goals:



*Create sustainable neighborhoods to improve all residents' quality of life.*



*Increase regional collaboration and employ innovative transportation solutions to maximize the return on public expenditures.*



*Position Central Ohio to attract and retain economic opportunity to prosper as a region and compete globally.*



*Provide transportation and mobility options to benefit the health, safety, and welfare of all people.*



*Protect natural resources and mitigate infrastructure vulnerabilities to maintain a healthy ecosystem and community.*

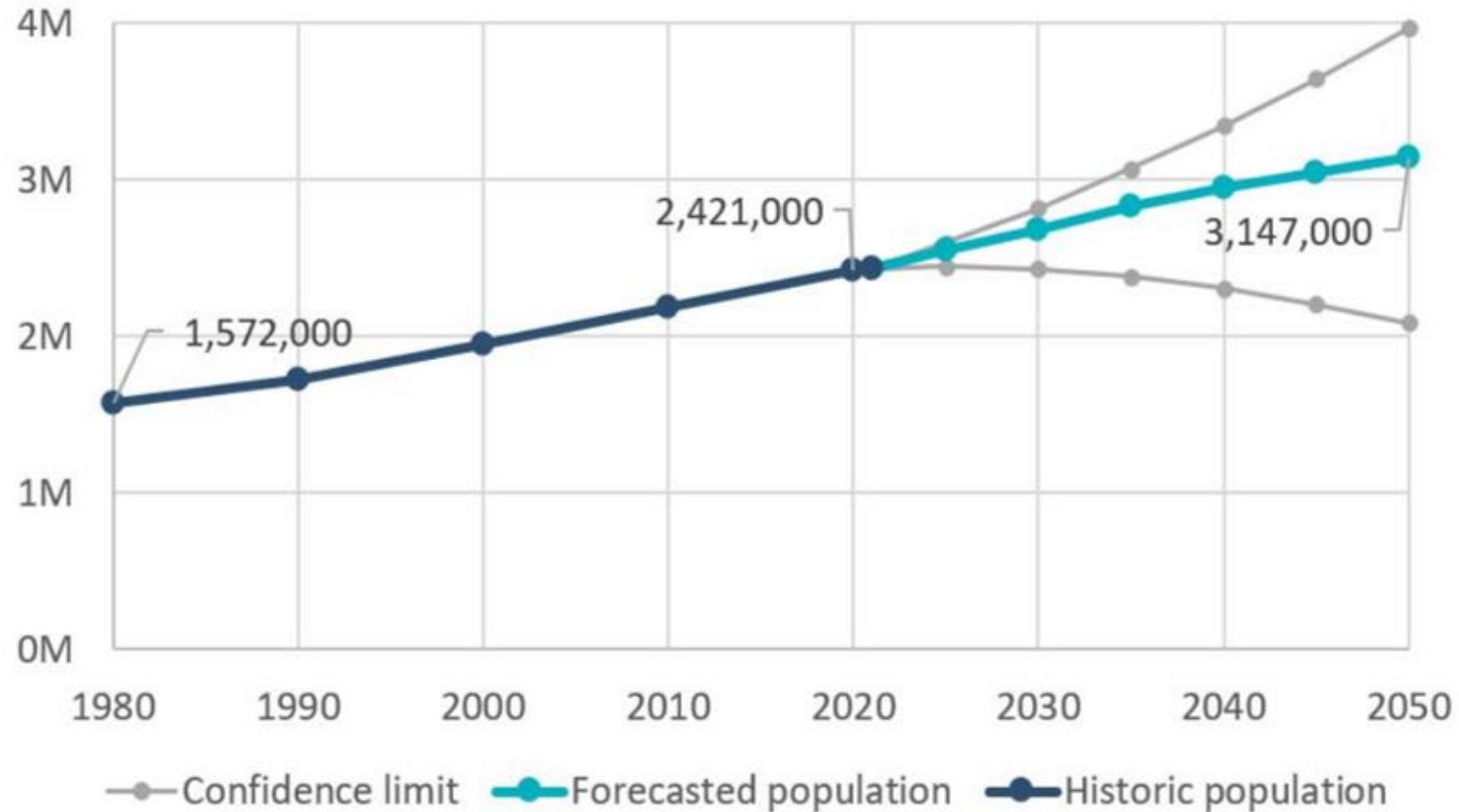


*Reduce per capita energy consumption and promote alternative fuel resources to increase affordability and resilience of regional energy supplies.*



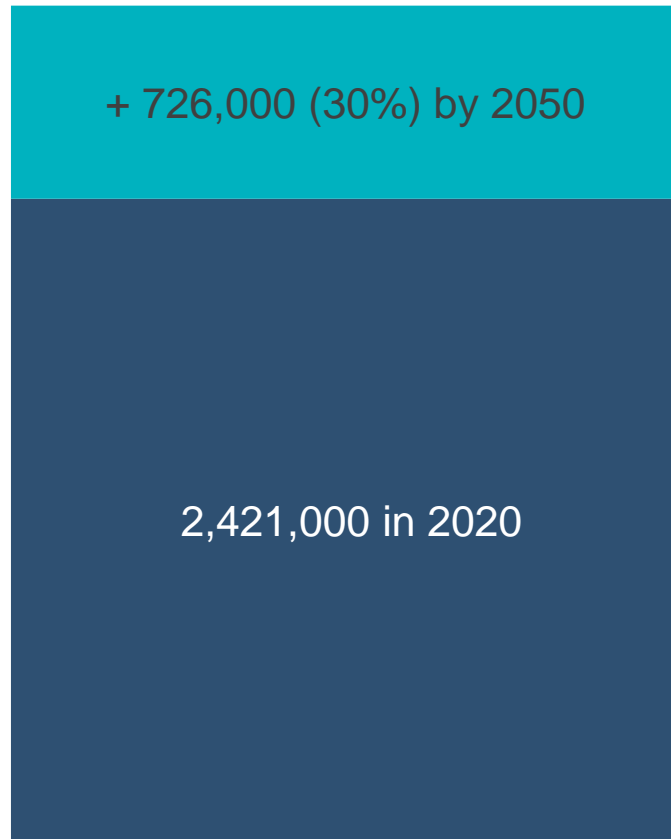


15-County Region Population

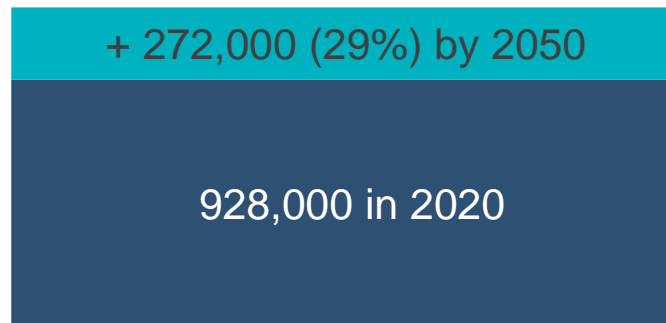




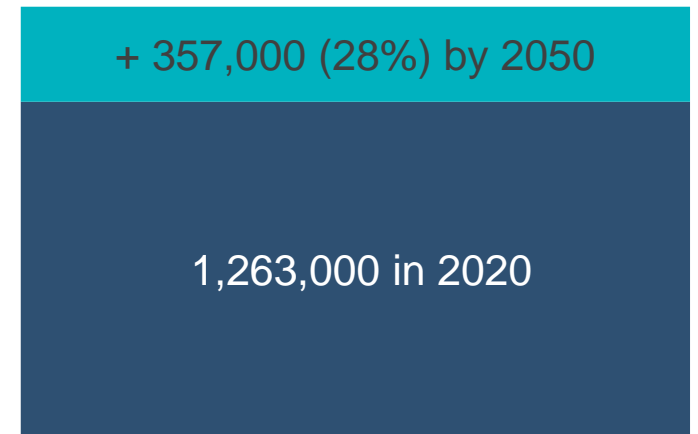
# 15-COUNTY REGIONAL GROWTH



**Population**



**Households**



**Jobs**



# Traffic Analysis Zone Level Forecasts

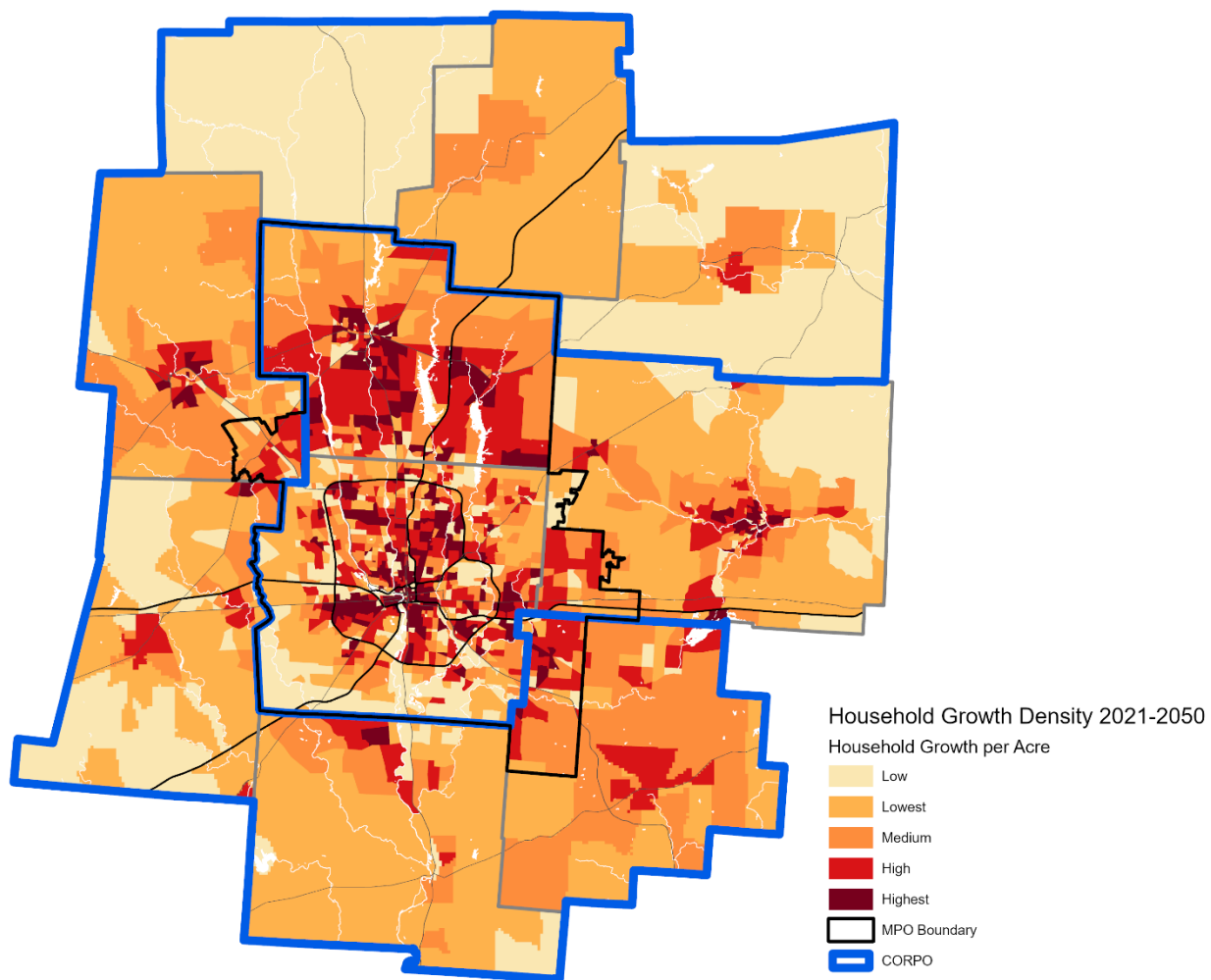
- **Process and Inputs:**

- Establish base year (2021) estimates of population and employment
  - (based on Decennial Census population, building permits, QCEW, parcel-level land use review)
- Develop forecast year (2050) county control totals to project total growth
  - (based on ARIMA model—birth/death rates, migration rates, historical trends; industry experts)
- Update future land use from local land use plans & points of interest
- Distribute growth using land use policies and factors that attract/deter development
- Revisions based on local review

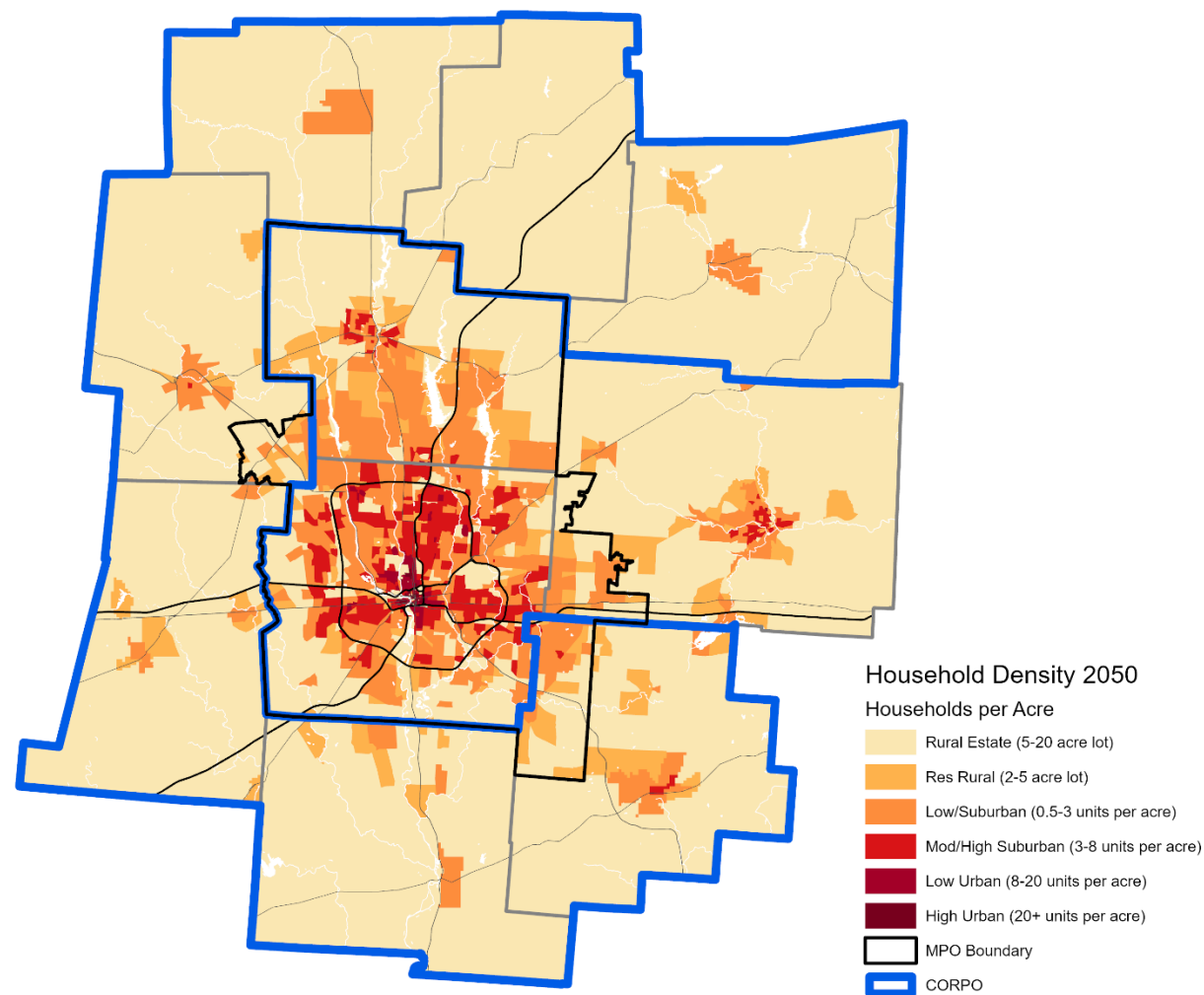


# 2050 Households (draft)

## Growth Density



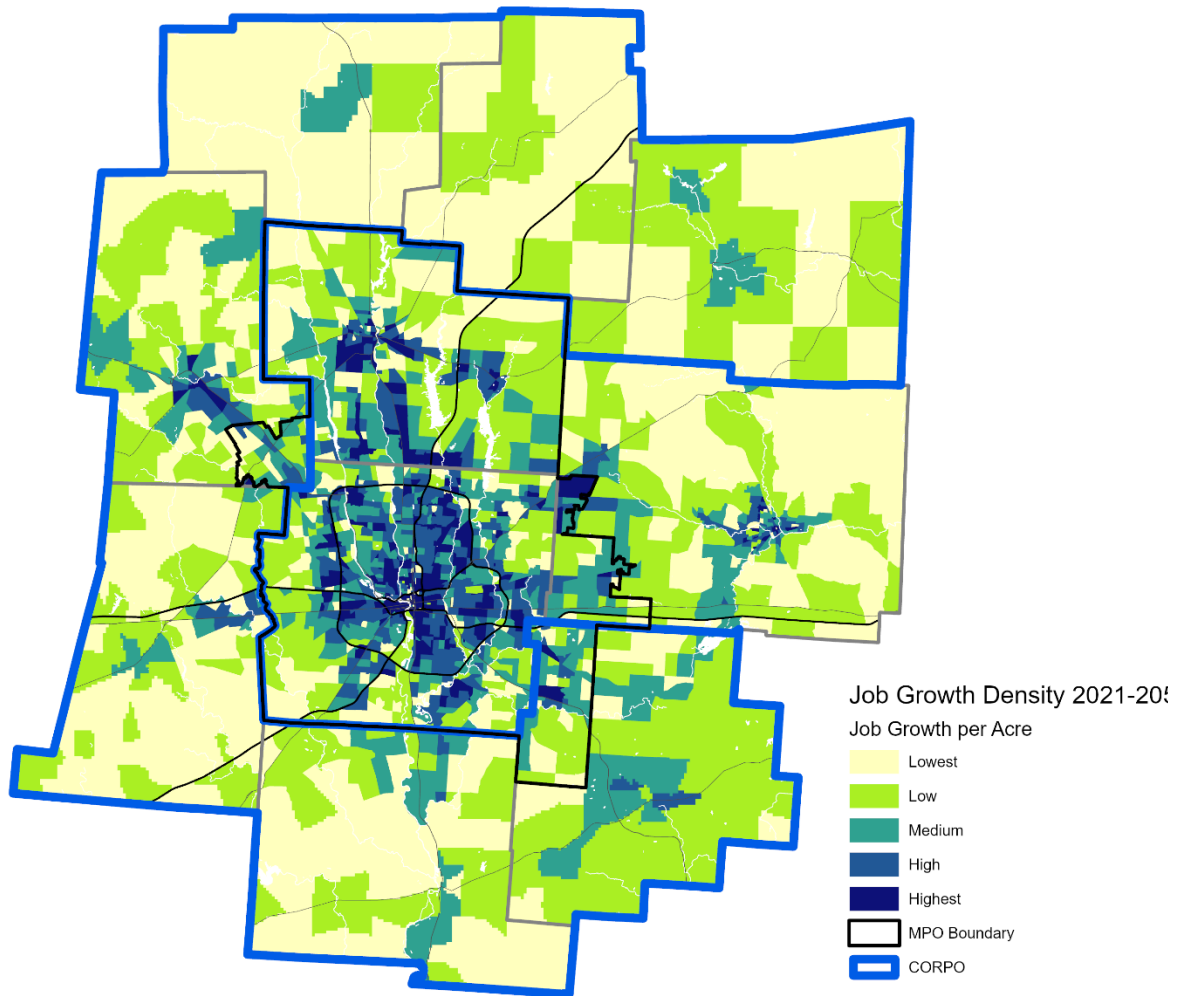
## Total 2050 Density



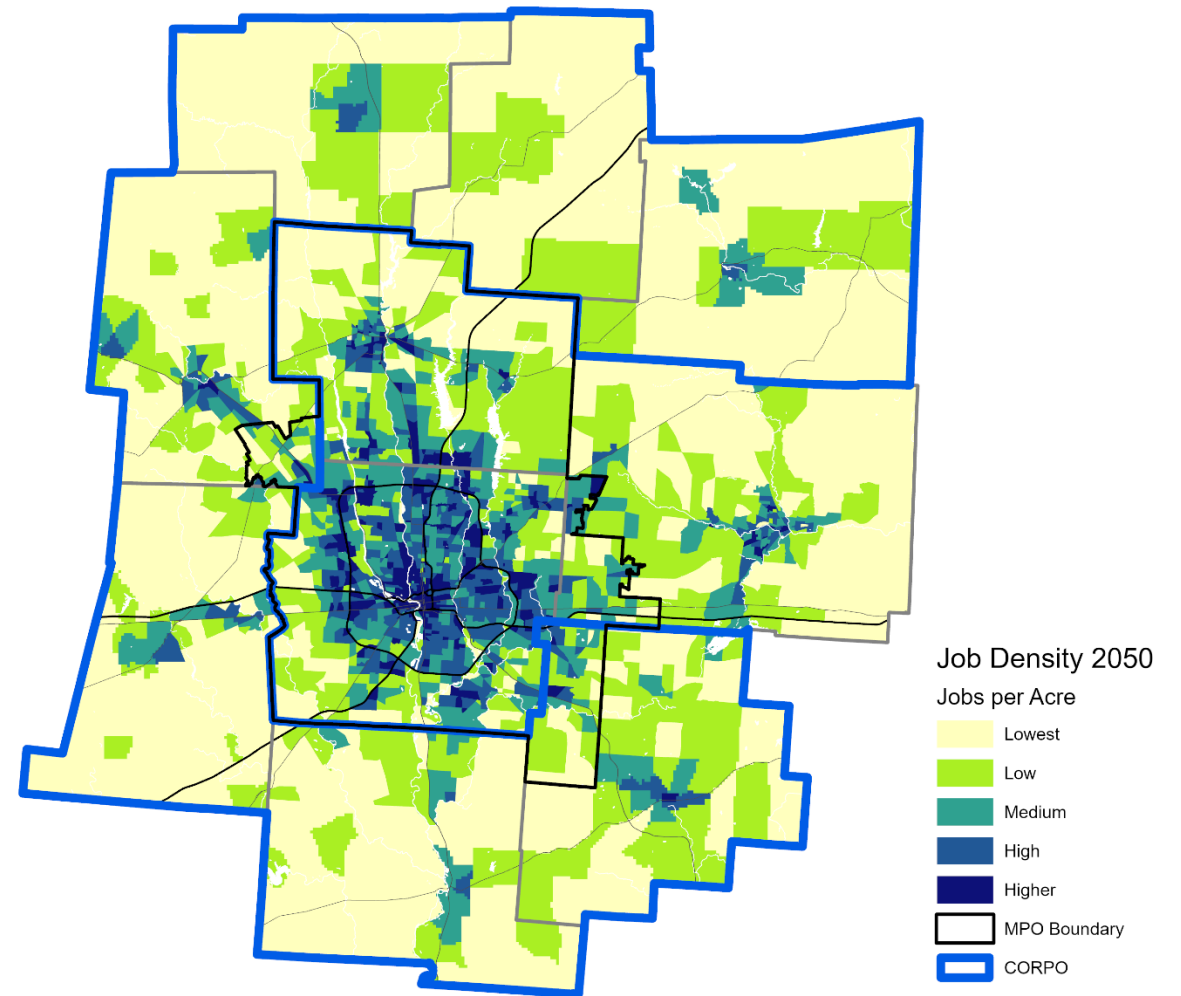


# 2050 Jobs (draft)

## Growth Density

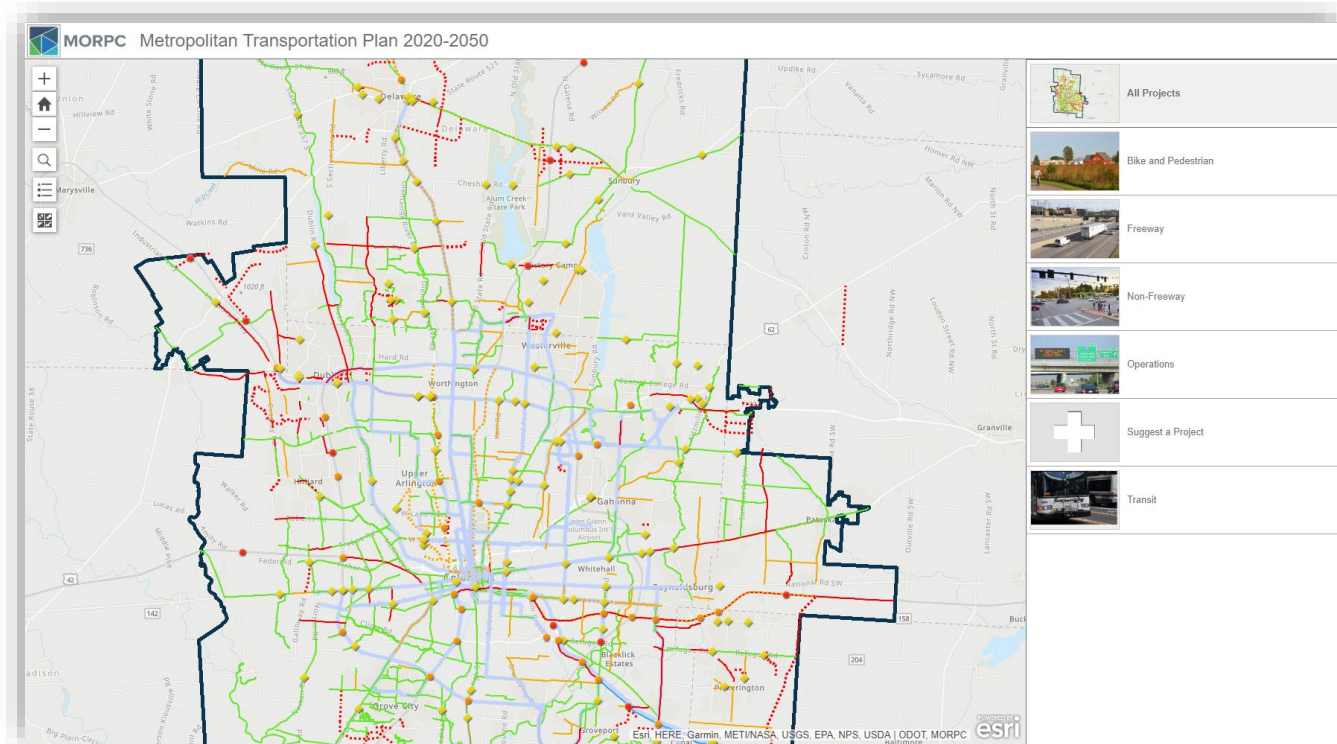


## Total 2050 Density



# GET INVOLVED

- **Review and Comment Interactive Webmap**
  - Publicly comment on candidate projects
  - Identify locations with safety, connectivity, or congestion issues
  - Suggest projects to be evaluated for inclusion in MTP
  - Access via [www.morpc.org/mtp2050](http://www.morpc.org/mtp2050)





MID-OHIO REGIONAL  
**MORPC**  
PLANNING COMMISSION

# WHAT'S NEXT?

- Webmap open through September 8, 2023
- Adopt TAZ-level Forecasts - September
- Draft list of strategies and projects – November
- Community Presentations - November - January
- MTP Adoption May 2024



## Jonathan Heider, AICP

*Senior Planner*

**T:** 614.233.4154

[jheider@morpc.org](mailto:jheider@morpc.org)

## Maria Schaper, AICP

*Associate Director, Transportation Planning*

**T:** 614.233.4153

[mschaper@morpc.org](mailto:mschaper@morpc.org)

111 Liberty Street, Suite 100  
Columbus, OH 43215



MID-OHIO REGIONAL  
**MORPC**  
PLANNING COMMISSION