

2024 - 2050 METROPOLITAN TRANSPORTATION PLAN UPDATE

Maria Schaper, MORPC



MID-OHIO REGIONAL
MORPC
PLANNING COMMISSION



MID-OHIO REGIONAL
MORPC
PLANNING COMMISSION

WHAT IS THE METROPOLITAN TRANSPORTATION PLAN (MTP)?

- Identifies regional transportation strategies and projects
- Long-range (20+ years)
- Fiscally constrained
- Formal document submitted to ODOT and USDOT every 4 years



WHY IS THE MTP IMPORTANT?

- **Central Ohio is growing**
 - Demographics are changing
 - Development is changing
 - Demands on the transportation system are changing
- **Transportation projects must be on MTP to be eligible for federal funding**
 - Formula & Discretionary (BIL)
 - Guides the work of MORPC and regional and local planning partners



By guiding investment in transportation and mobility infrastructure and services in Central Ohio, the MTP identifies strategies to advance the following six goals:



Create sustainable neighborhoods to improve all residents' quality of life.



Increase regional collaboration and employ innovative transportation solutions to maximize the return on public expenditures.



Position Central Ohio to attract and retain economic opportunity to prosper as a region and compete globally.



Provide transportation and mobility options to benefit the health, safety, and welfare of all people.



Protect natural resources and mitigate infrastructure vulnerabilities to maintain a healthy ecosystem and community.

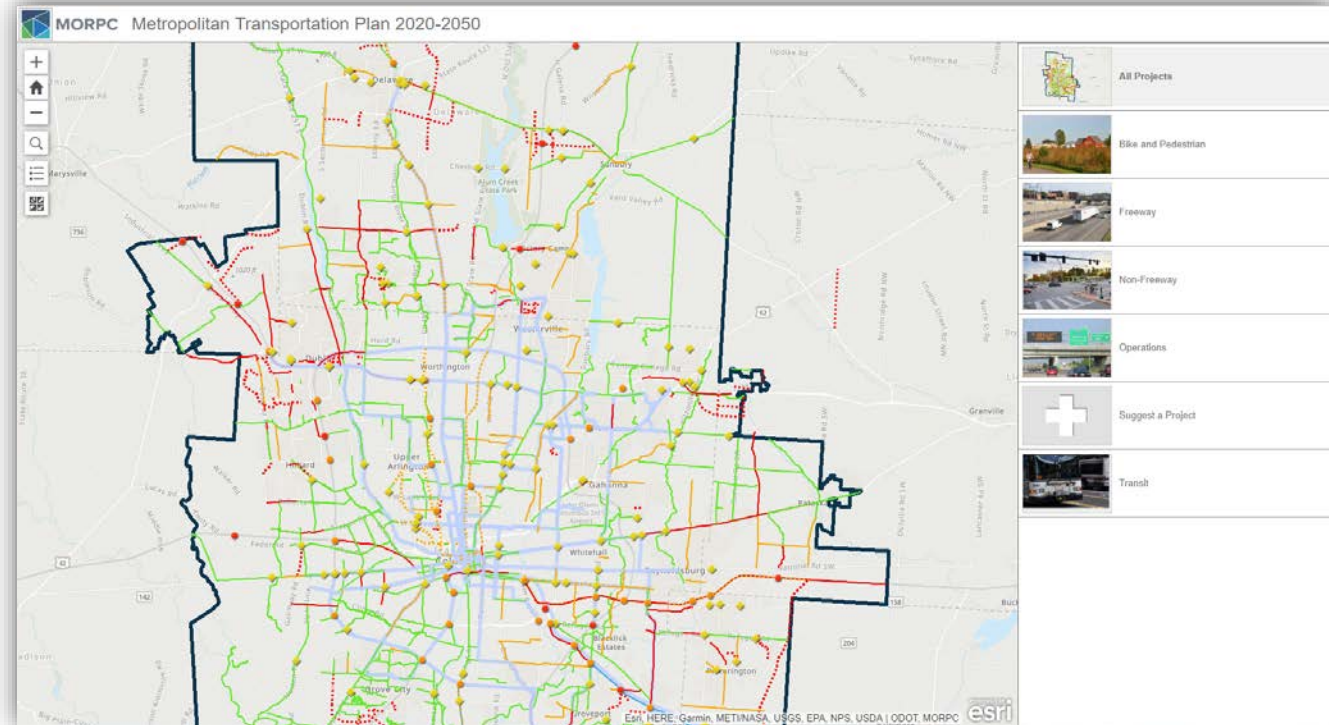


Reduce per capita energy consumption and promote alternative fuel resources to increase affordability and resilience of regional energy supplies.

GET INVOLVED

Review and Comment: Interactive Webmap

- Open until Friday, September 8
- Publicly comment on candidate projects
- Identify locations with safety, connectivity, or congestion issues
- Suggest projects to be evaluated for inclusion in MTP
- Access via www.morpc.org/mtp2050

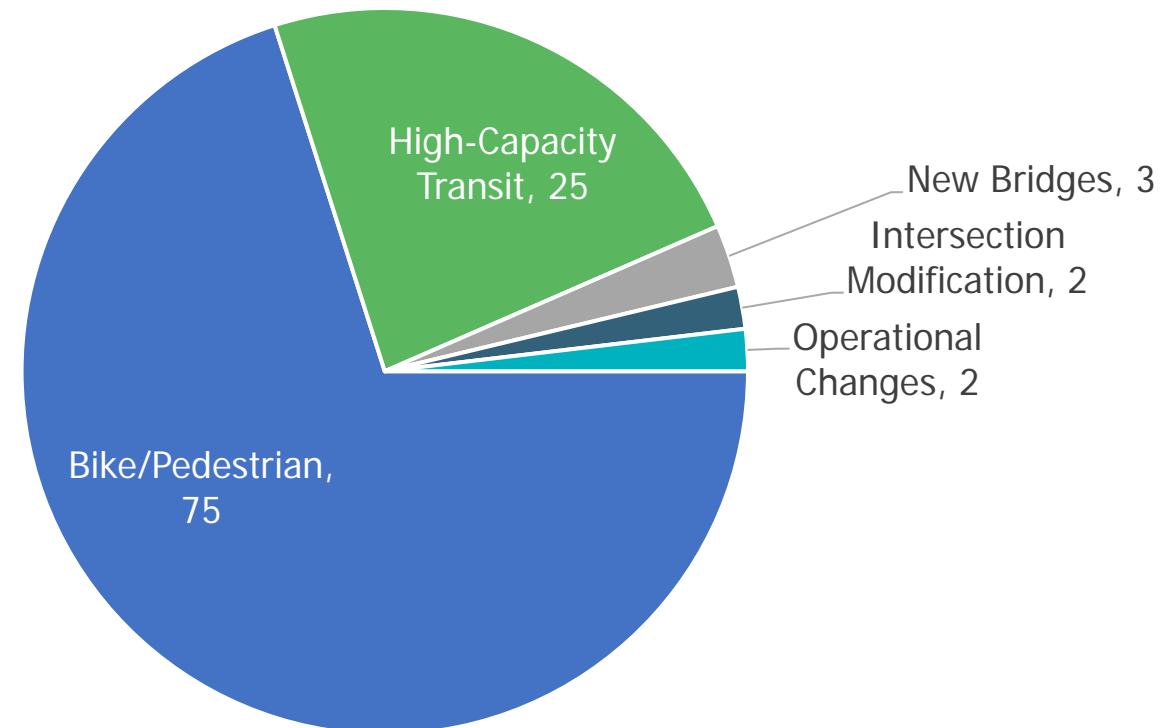




RESPONSES SO FAR (8/22/23)

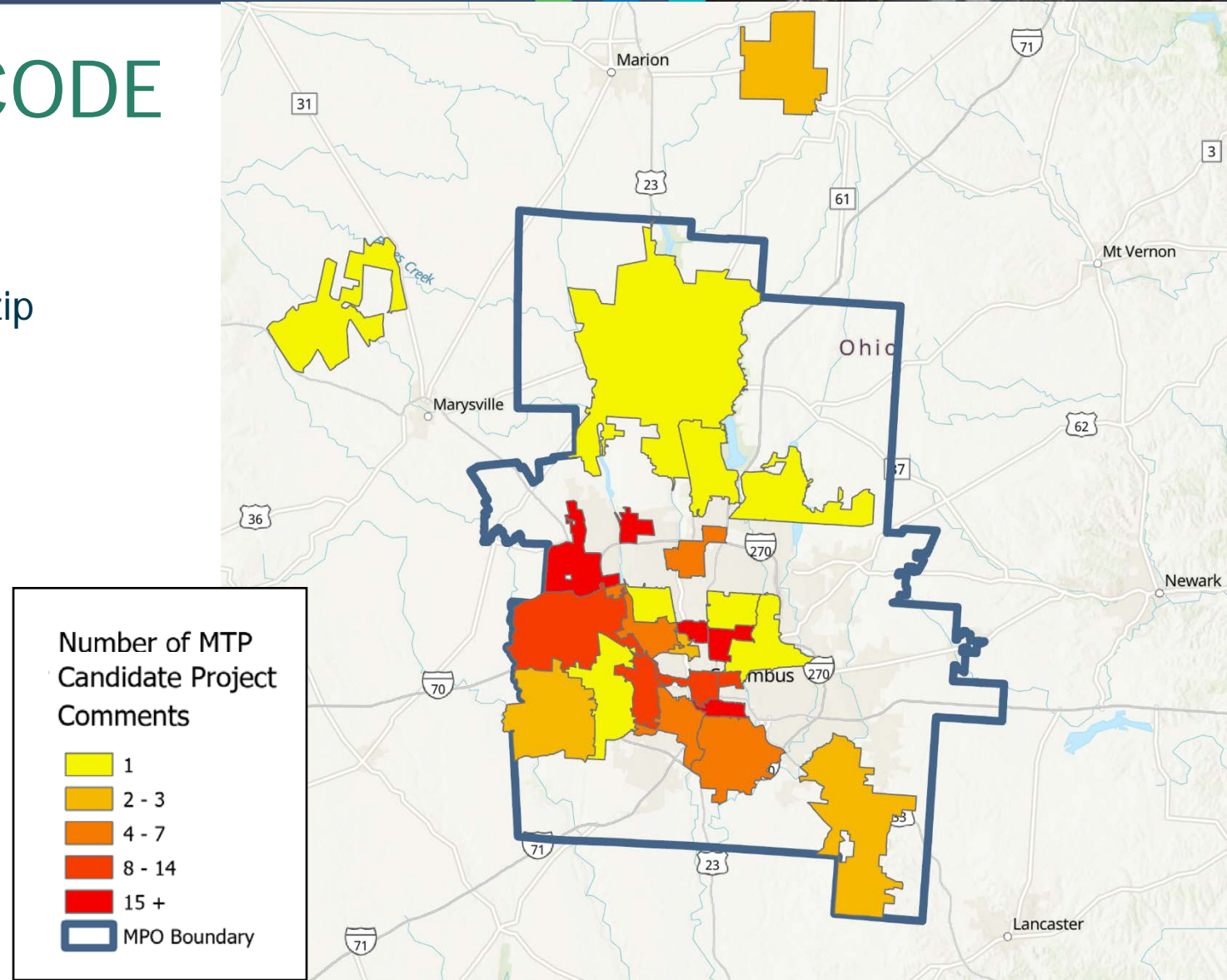
- 107 suggested projects drawn
 - 95% of projects suggested were new bike/pedestrian facilities or high-capacity transit lines
- 396 comments on projects
 - Projects with the most comments include a suggested bike lane on N High St from downtown Columbus to Worthington, Columbus-Chicago rail connection, and traffic calming on Summit/4th St north of downtown Columbus

Suggested Projects by Type



PARTICIPATION BY ZIP CODE

- 396 total comments on projects
 - 66% of comments provided optional zip code information
- Top 5 zip codes by number of comments:
 - 43211 (Columbus)
 - 43206 (Columbus)
 - 43202 (Columbus)
 - 43016 (Dublin)
 - 43026 (Hilliard)





MID-OHIO REGIONAL
MORPC
PLANNING COMMISSION

WHAT'S NEXT?

- Webmap open through September 8, 2023
- Project evaluation, fiscal analysis – September-October
- Draft list of strategies and projects – November
- Community Presentations - November - January
- MTP Adoption May 2024





2022

- Review, update, adopt Goals, Objectives, Performance Measures
- Develop and adopt 2050 population and employment growth projections


2023

- Compile candidate strategies and projects
- Project Evaluation Criteria
- Interactive webmap
- Strategy and project evaluation
- Fiscal Analysis
- Draft strategies and projects

2024

- Impact Analyses
- Full draft document
- Public comment period
- May: MTP Adoption

Public Participation



RESOLUTION T-15-23: ADOPTING FORECAST 2050 HOUSEHOLD AND EMPLOYMENT VARIABLES

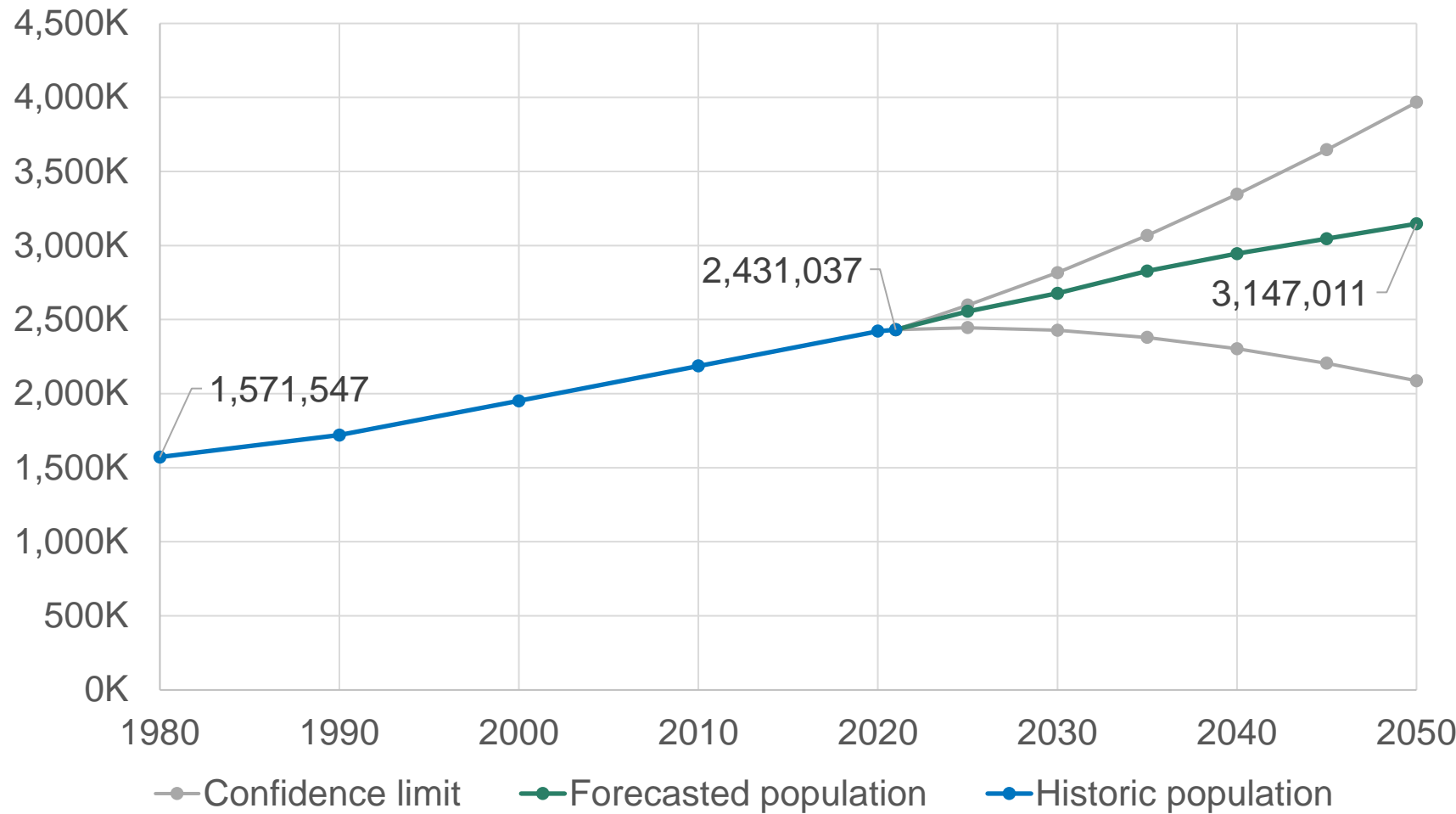
Maria Schaper, MORPC



MID-OHIO REGIONAL
MORPC
PLANNING COMMISSION

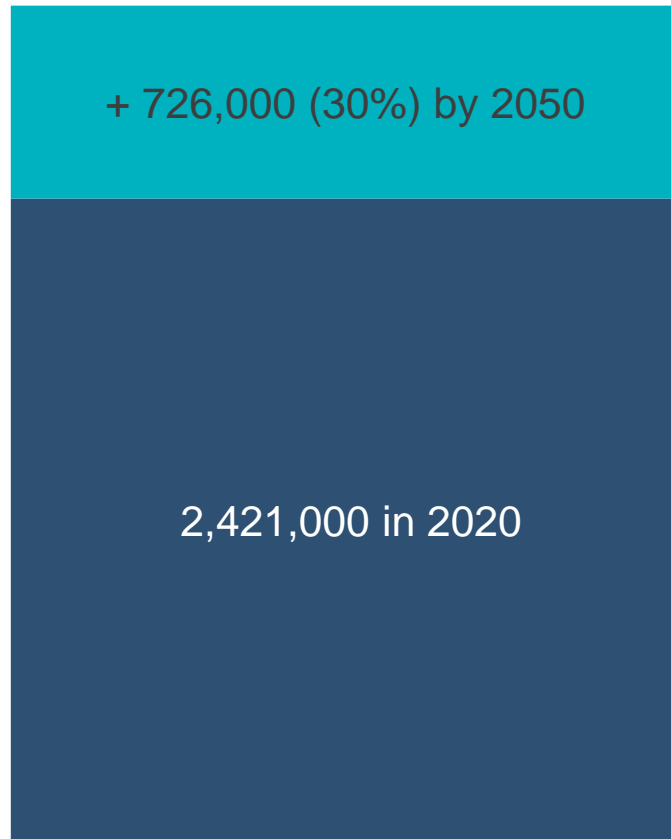


15-County Region Population

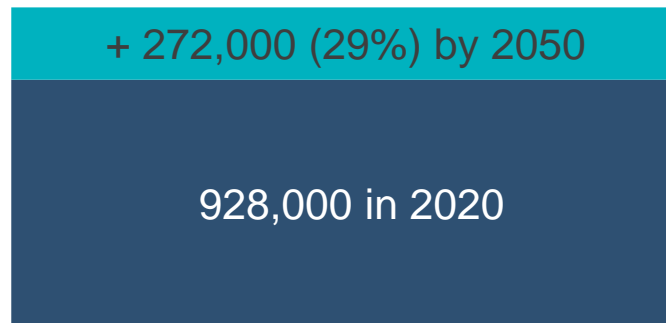




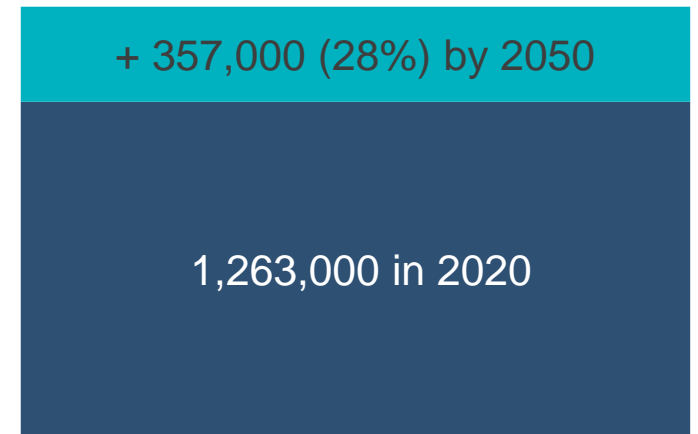
15-COUNTY REGIONAL GROWTH



Population



Households



Labor force



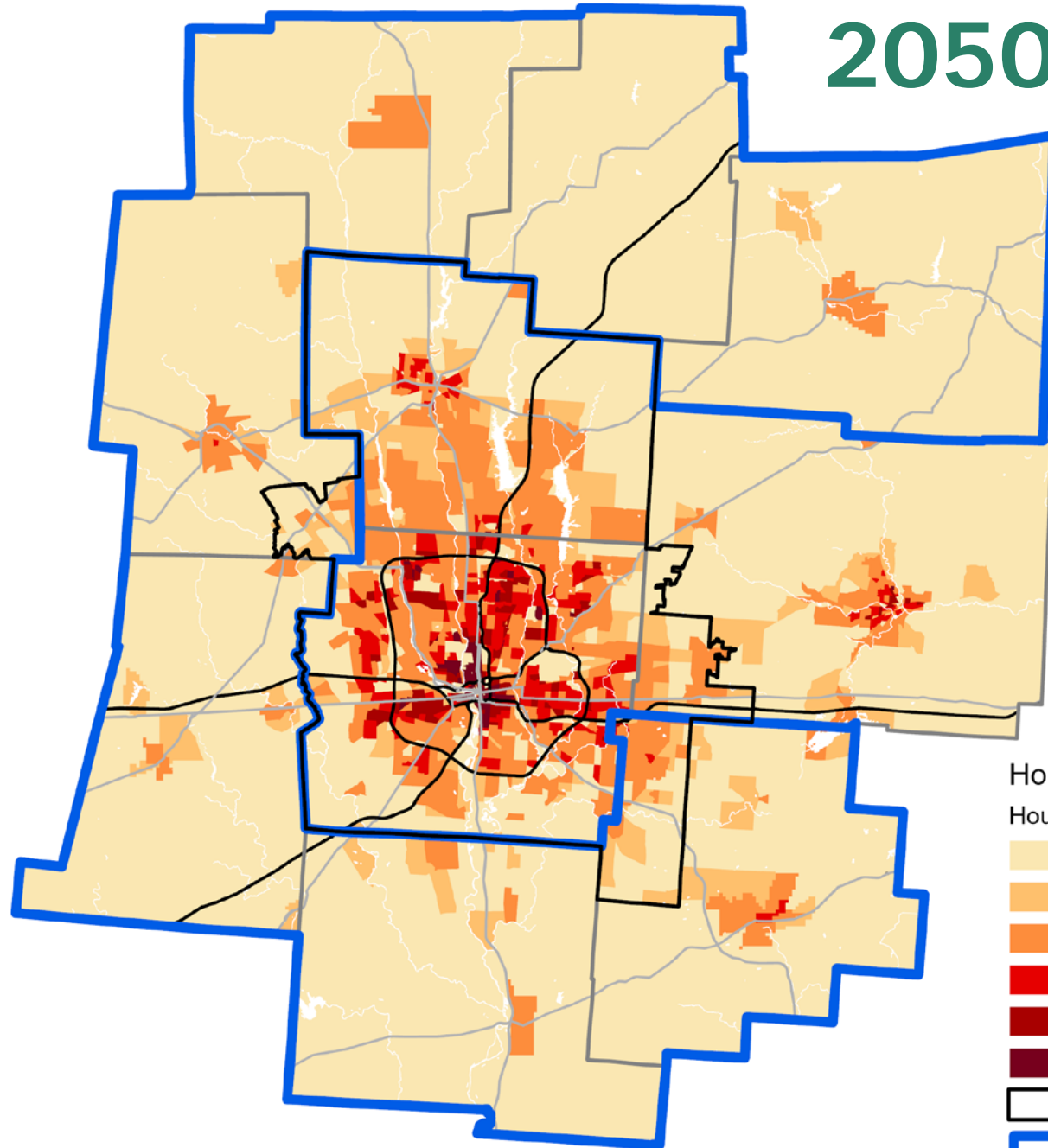
Traffic Analysis Zone Level Forecasts

- **Process and Inputs:**

- Establish base year (2021) estimates of population and employment
 - (based on Decennial Census population, building permits, QCEW, parcel-level land use review)
- Develop forecast year (2050) county control totals to project total growth
 - (based on ARIMA model—birth/death rates, migration rates, historical trends; industry experts)
- Update future land use from local land use plans & points of interest
- Distribute growth using land use policies and factors that attract/deter development
- Revisions based on local review



2050 Household Density



Household Density 2050

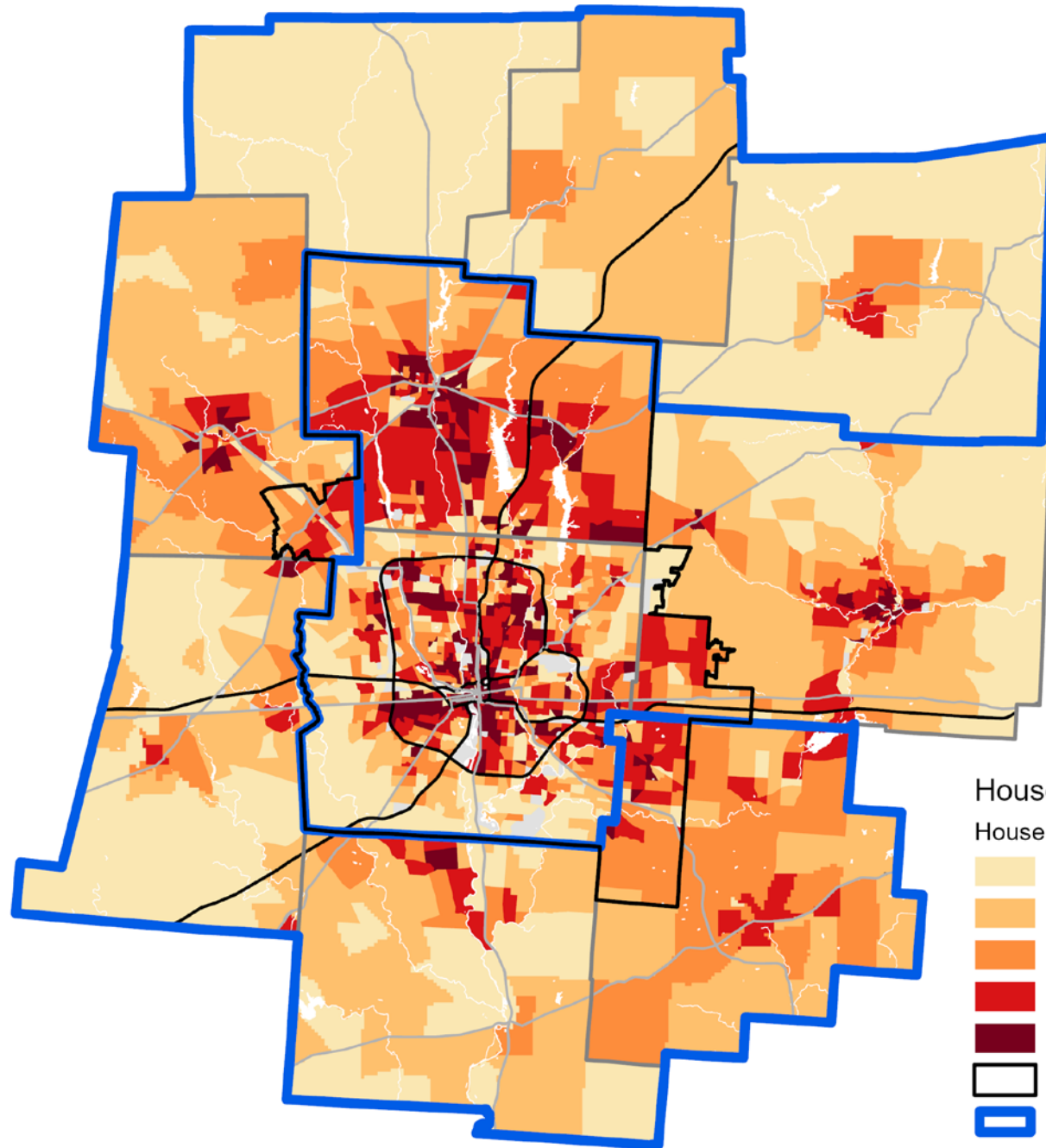
Households per Acre

- Rural Estate (5-20 acre lot)
- Rural (2-5 acre lot)
- Low Suburban (0.5-3 units per acre)
- Mod Suburban (3-5 units per acre)
- High Suburban (5-8 units per acre)
- Urban (8+ units per acre)
- MPO Boundary
- CORPO



MORPC

2021-2050 Household Growth Density



Household Growth Density 21-50

Household Growth per Acre

Lowest

Low

Medium

High

Highest

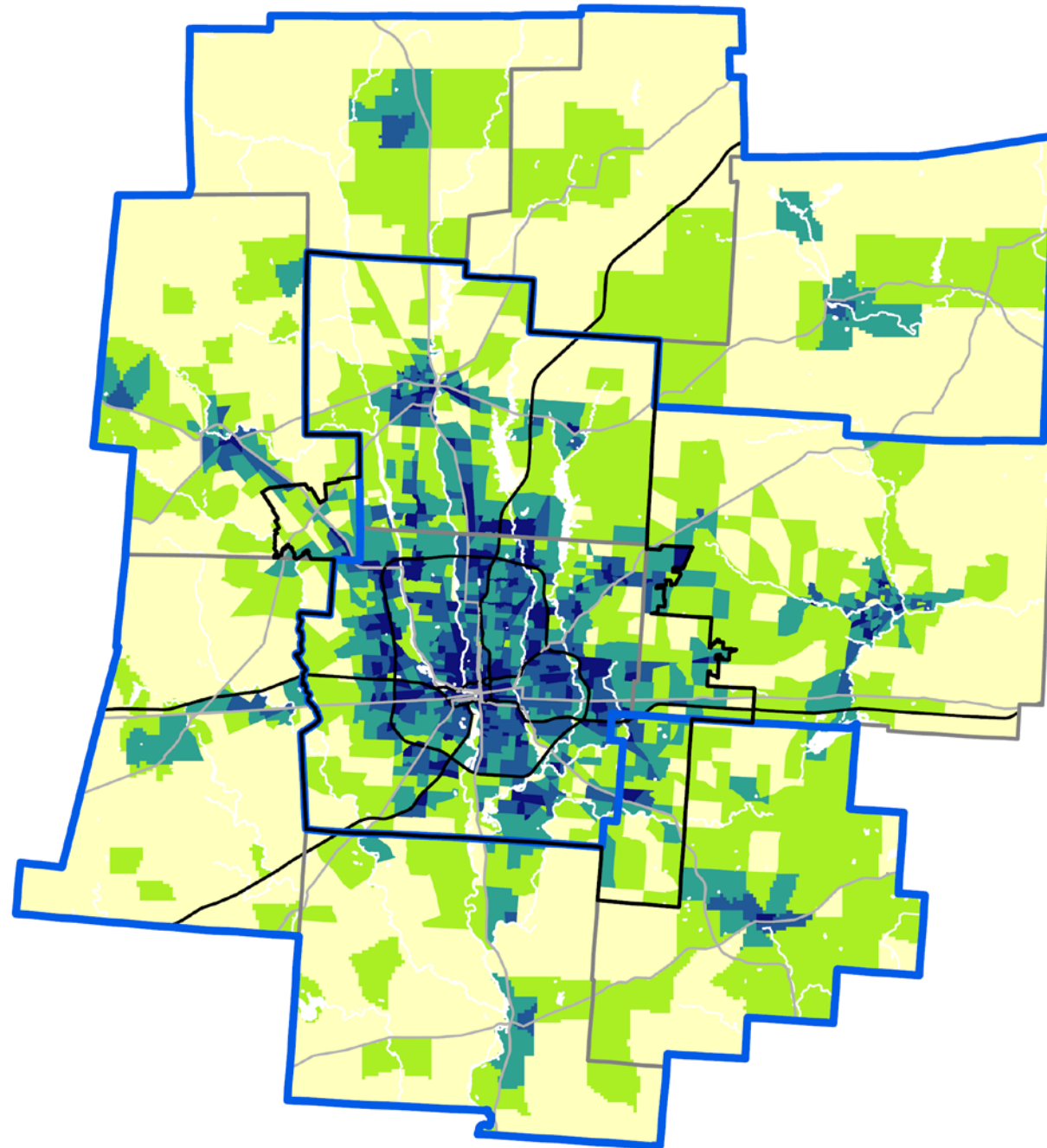
MPO Boundary

CORPO



MORPC

2050 Job Density



Job Density 2050

Jobs per Acre

Lowest

Low

Medium

High

Highest

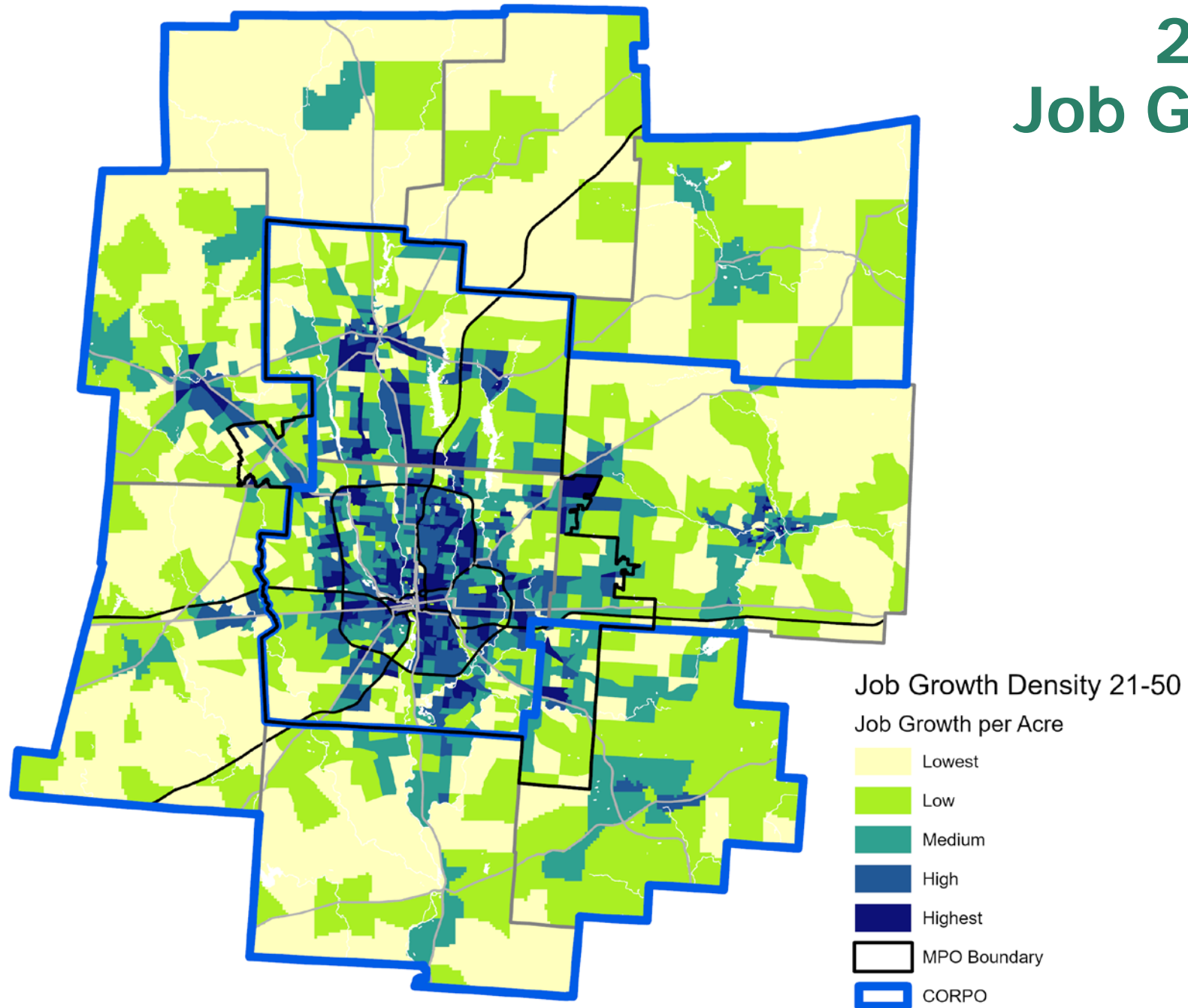
MPO Boundary

CORPO



MORPC

2021-2050 Job Growth Density



MORPC

Jonathan Heider, AICP

Senior Planner

T: 614.233.4154

jheider@morpc.org

Maria Schaper, AICP

Associate Director, Transportation Planning

T: 614.233.4153

mschaper@morpc.org

111 Liberty Street, Suite 100
Columbus, OH 43215



MID-OHIO REGIONAL
MORPC
PLANNING COMMISSION