

CENTRAL OHIO WORKFORCE TRANSIT PLAN

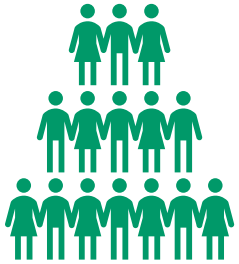


OHIO DEPARTMENT OF
TRANSPORTATION

WHAT THIS STUDY WILL DO

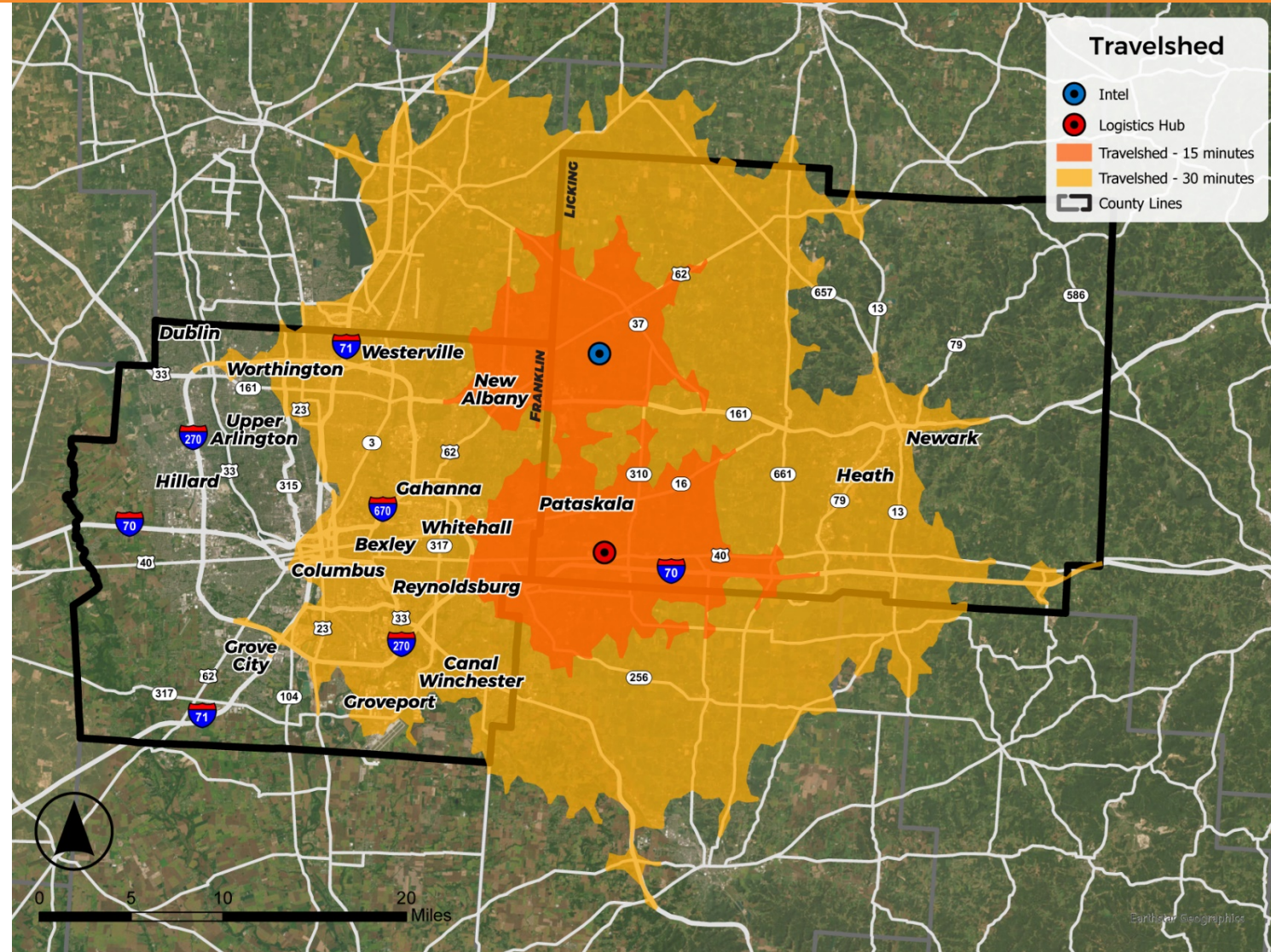
- Identify roadways for **dedicated transit lanes**
- Identify near-term, mid-term, and long-term **transit service needs**
- Identify locations for **mobility hubs** and decide on the size and scope of the mobility hubs

WHERE THE WORKFORCE WILL TRAVEL FROM

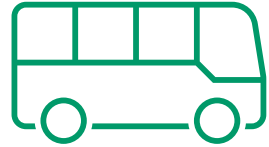


625,835

people in the
civilian workforce
live within the
30-minute
travelsheds



ARE JOBS IN THESE ECONOMIC HUBS ACCESSIBLE ON TRANSIT?



81,022

civilian workers in
Licking County will
have access to a one-
seat ride to Intel for
\$4 one-way

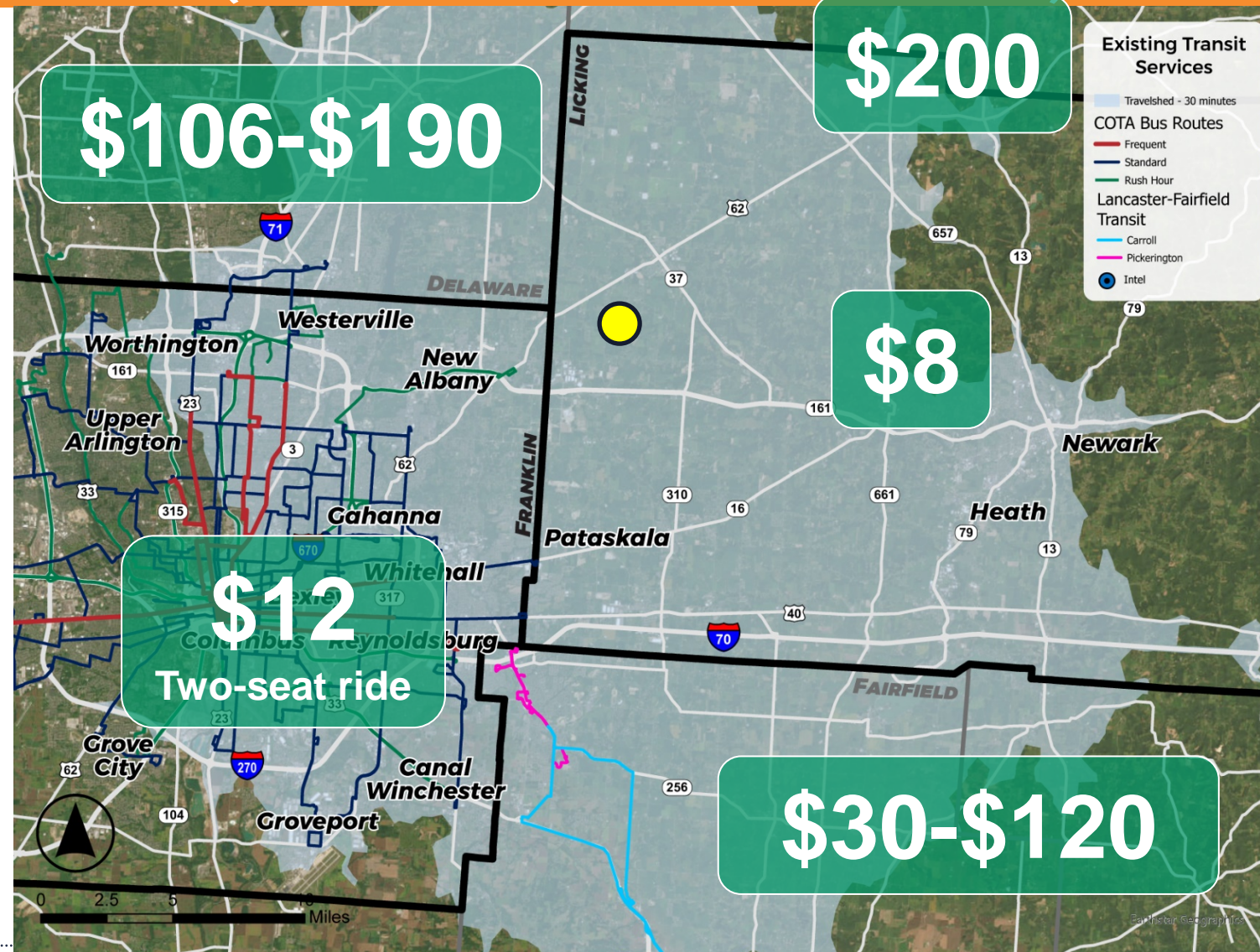


13%

of the workforce
could get to Intel
on transit for
about \$8 a day

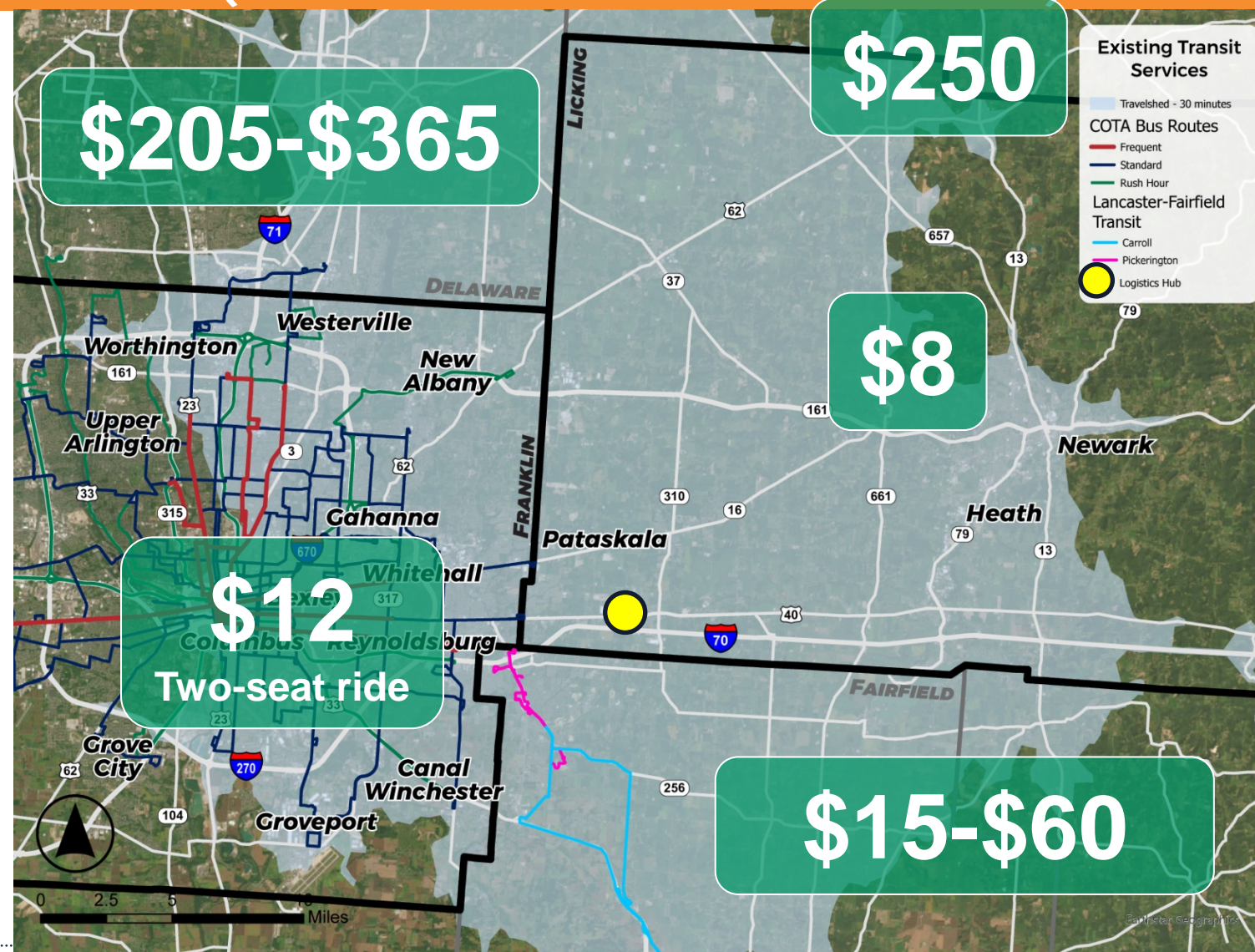
WORKFORCE TRAVEL COSTS (THROUGHOUT REGION)

Average daily cost
to ride transit to
Intel

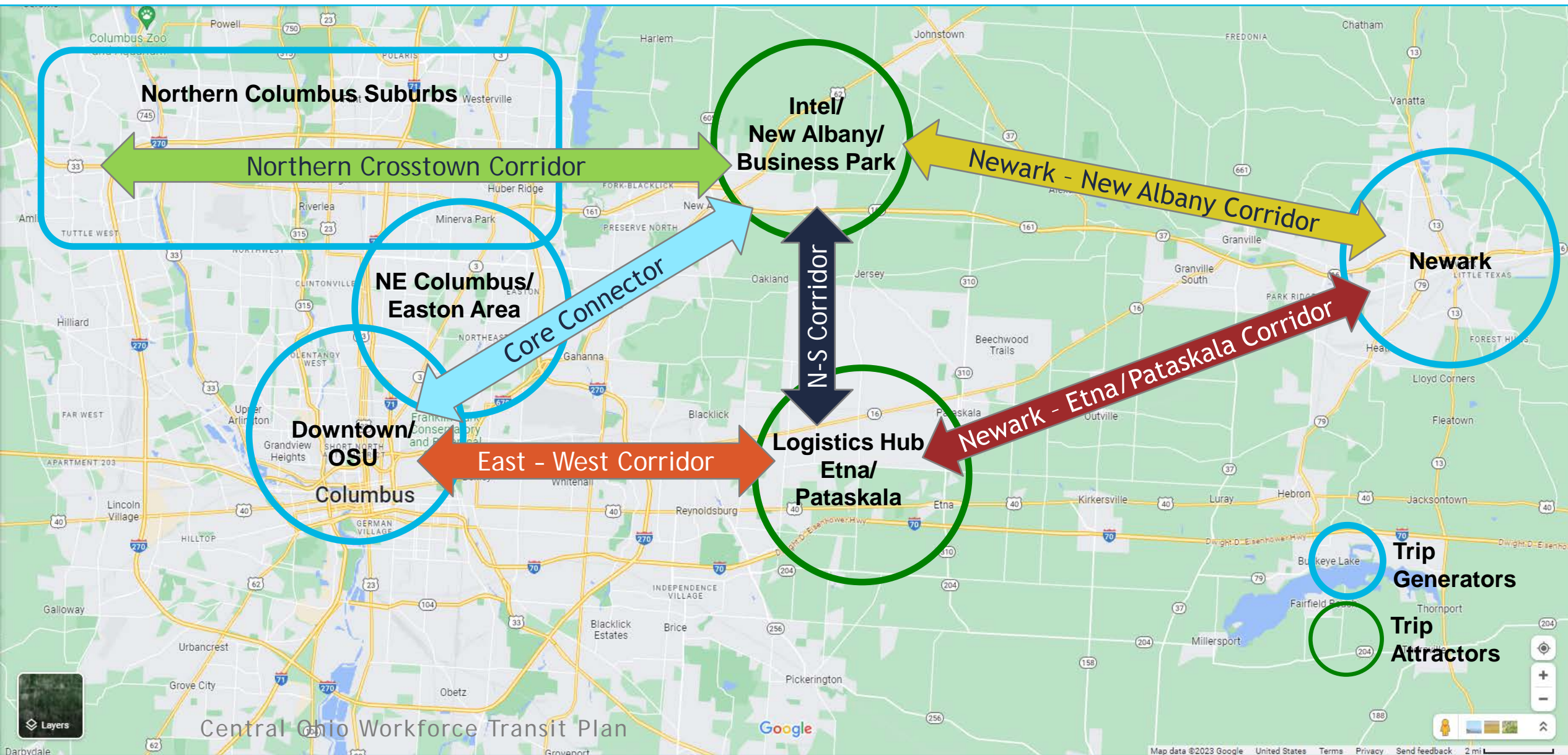


WORKFORCE TRAVEL COSTS (THROUGHOUT REGION)

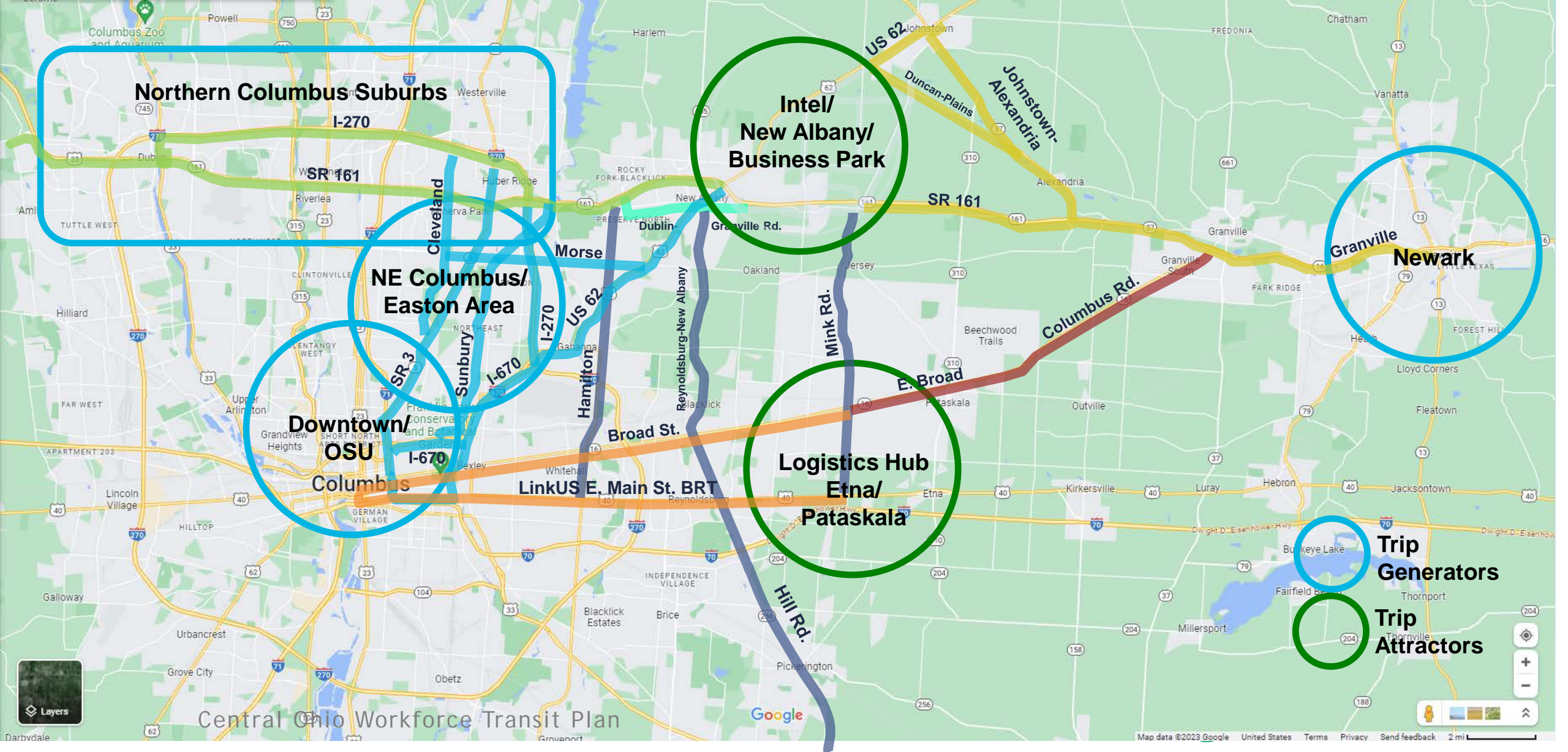
Average daily cost
to ride transit to
Etna/Pataskala



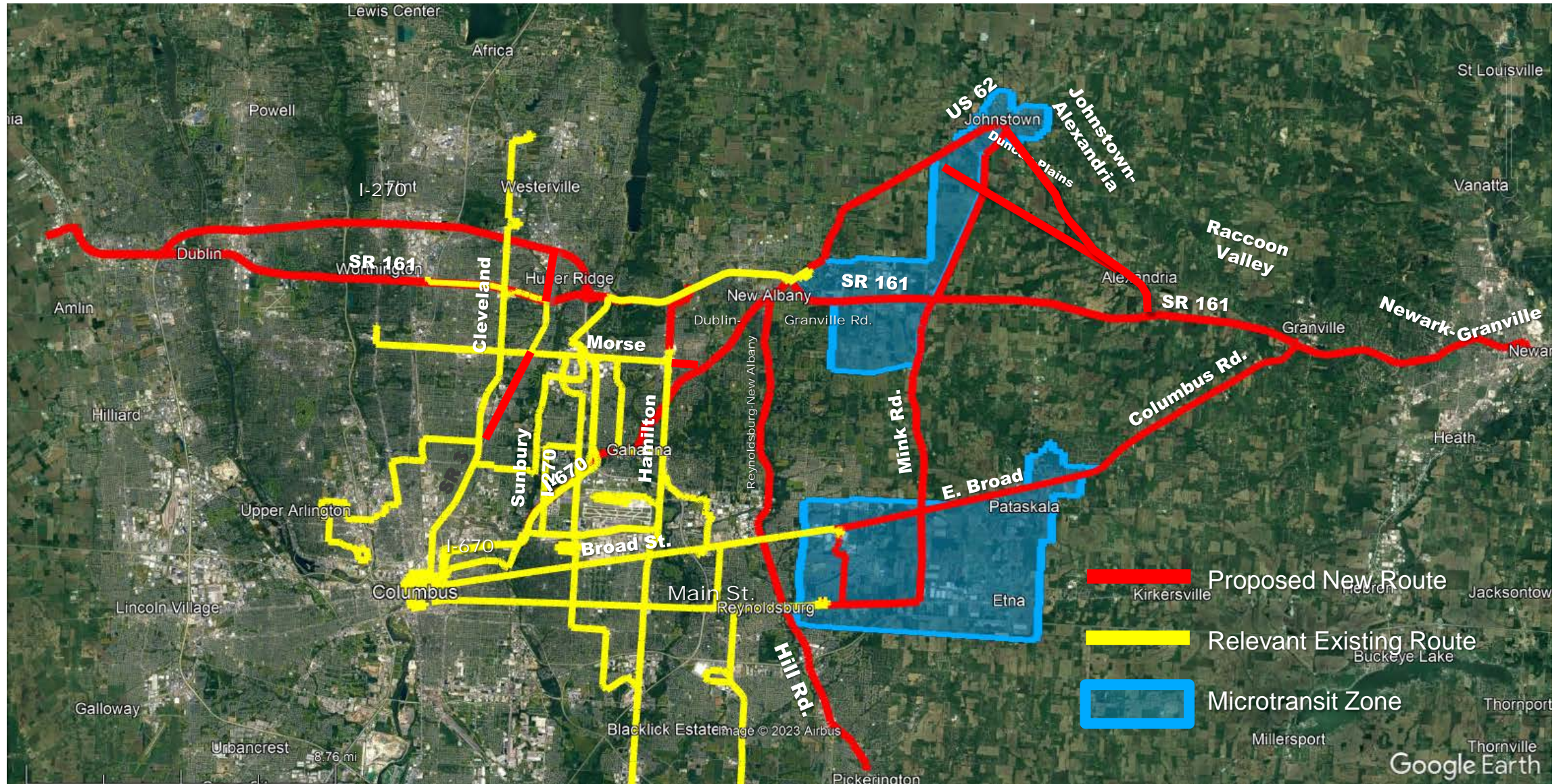
KEY CORRIDORS AND TRIP GENERATORS-ATTRACTORS



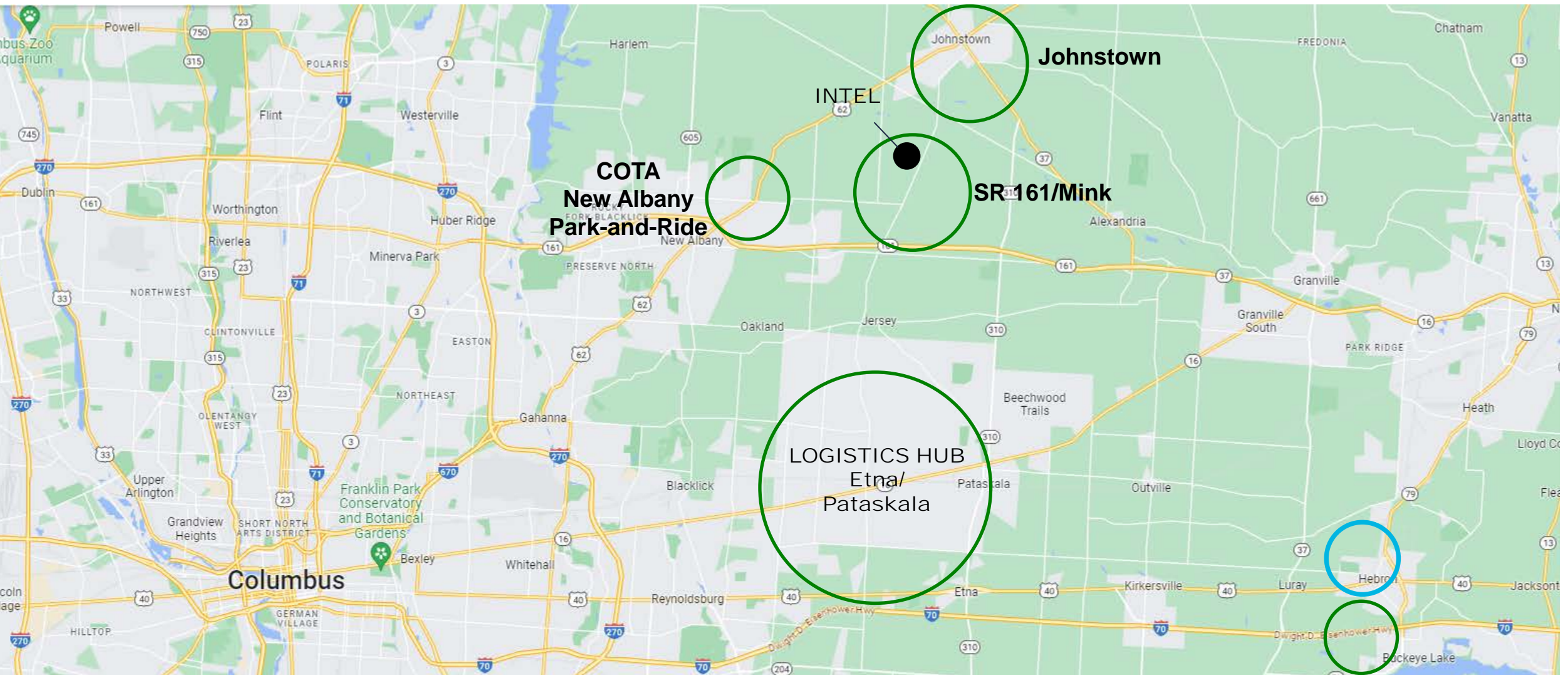
DEDICATED LANES – OPTIONAL ALIGNMENTS



POTENTIAL BUS ROUTES/SERVICES



POTENTIAL TRANSIT HUB LOCATIONS



NEXT STEPS

- Refine and evaluate scenarios
- Follow up discussions with individual Steering Committee members as needed
- Present the scenario evaluation results at Steering Committee meeting #3 (October)