

2024 - 2050 METROPOLITAN TRANSPORTATION PLAN UPDATE

Maria Schaper, MORPC



MID-OHIO REGIONAL
MORPC
PLANNING COMMISSION



WHAT IS THE METROPOLITAN TRANSPORTATION PLAN (MTP)?

- Identifies regional transportation strategies and projects
- Long-range (20+ years)
- Fiscally constrained
- Formal document submitted to ODOT and USDOT every 4 years



WHY IS THE MTP IMPORTANT?

- **Central Ohio is growing**
 - Demographics are changing
 - Development is changing
 - Demands on the transportation system are changing
- **Transportation projects must be on MTP to be eligible for federal funding**
 - Formula & Discretionary (BIL)
 - Guides the work of MORPC and regional and local planning partners



By guiding investment in transportation and mobility infrastructure and services in Central Ohio, the MTP identifies strategies to advance the following six goals:



Create sustainable neighborhoods to improve all residents' quality of life.



Increase regional collaboration and employ innovative transportation solutions to maximize the return on public expenditures.



Position Central Ohio to attract and retain economic opportunity to prosper as a region and compete globally.



Provide transportation and mobility options to benefit the health, safety, and welfare of all people.



Protect natural resources and mitigate infrastructure vulnerabilities to maintain a healthy ecosystem and community.

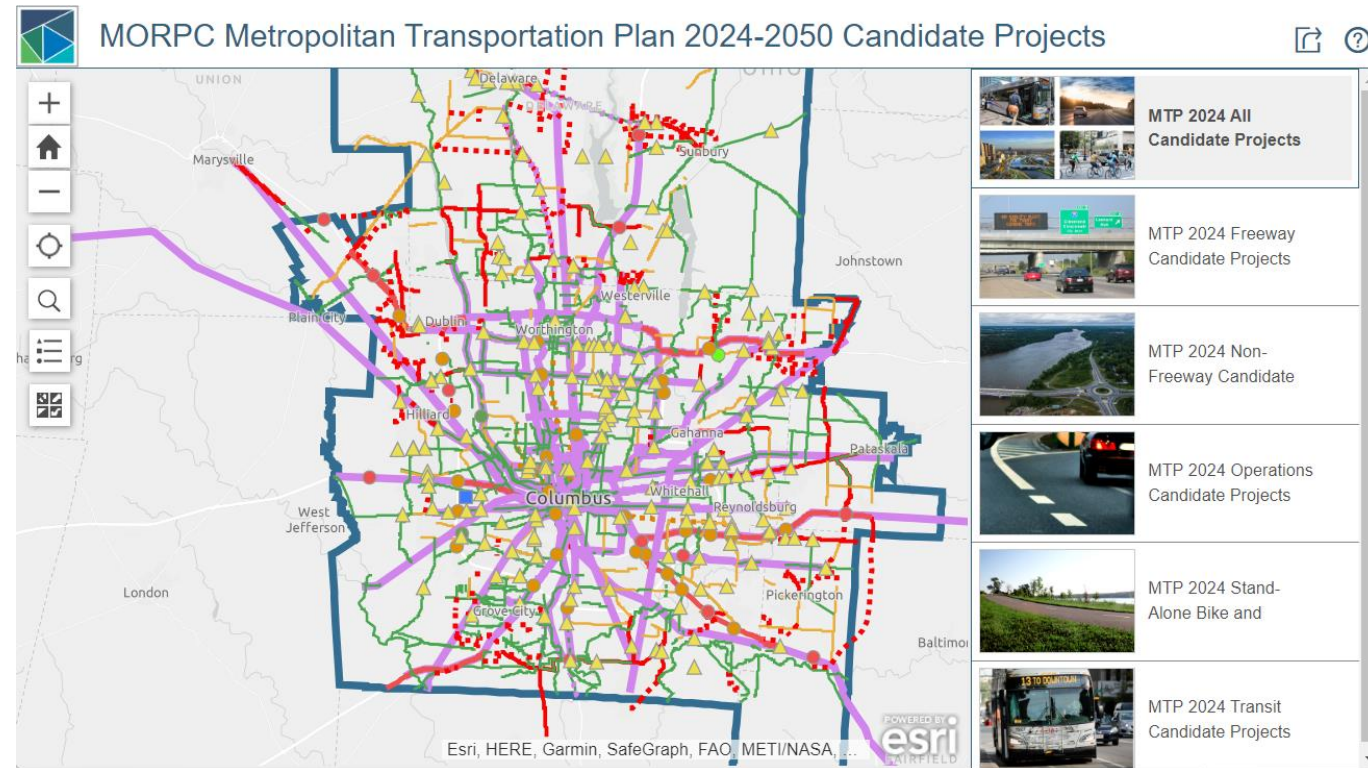


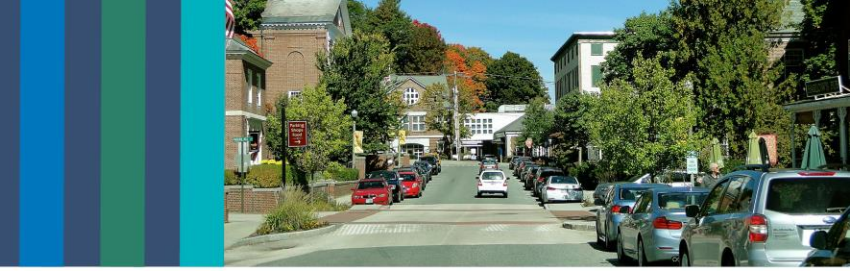
Reduce per capita energy consumption and promote alternative fuel resources to increase affordability and resilience of regional energy supplies.

INTERACTIVE WEB MAP

- **Candidate Projects**

- Publicly comment on candidate projects
- ✓ Identify locations with safety, connectivity, or congestion issues
- ✓ Suggest projects to be evaluated for inclusion in MTP
- Access via www.morpc.org/mtp2050
- Project suggestion period ended 9/8

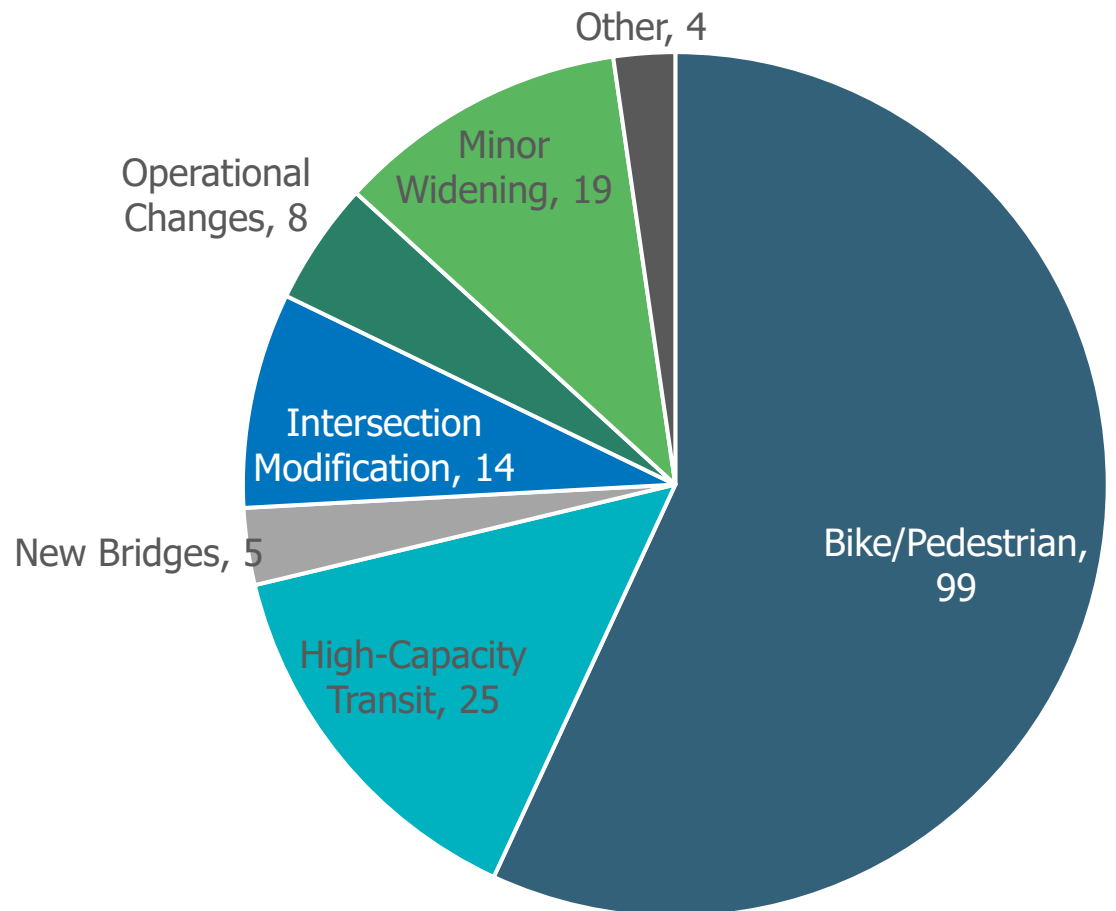




SUGGESTED PROJECTS

- 174 suggested projects drawn by the public (as of 9/9/23)
 - 71% of project suggestions were for new bike/pedestrian facilities or high-capacity transit lines

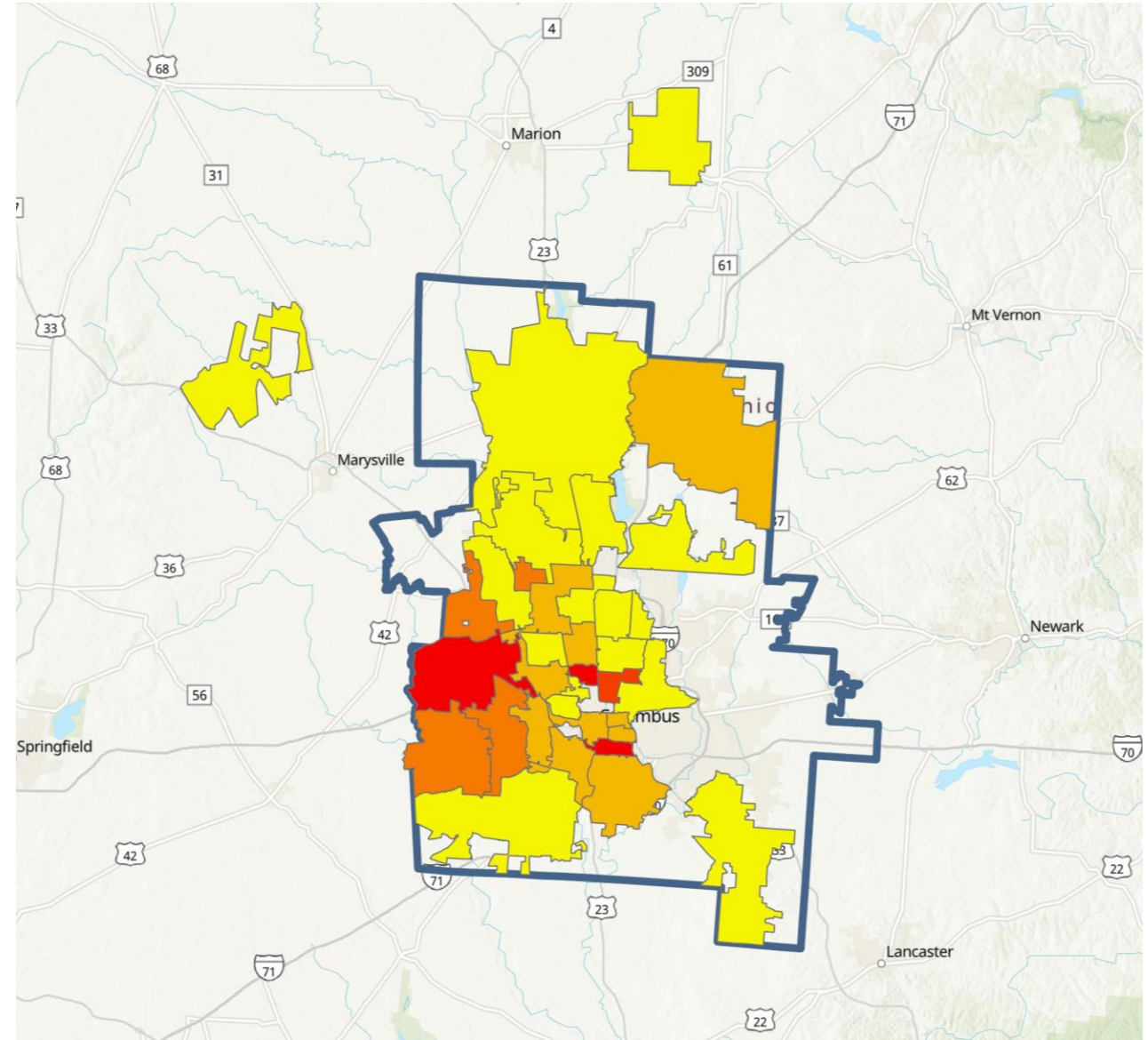
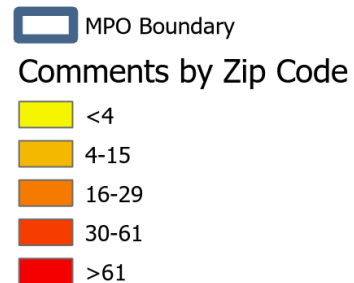
Suggested Projects by Type





COMMENTS BY ZIP CODE

- 1,052 total comments
- 555 comments (53%) provided optional zip code information





WHAT'S NEXT?

- Webmap commenting remains open
- Adopt TAZ-level Forecasts – T-15-23
- Draft list of strategies and projects – November
- Community Presentations - November – January
- Full Draft document – January
- Comment Period & Open House – February/March
- MTP Adoption May 2024





MID-OHIO REGIONAL
MORPC
PLANNING COMMISSION

Resolution T-15-23

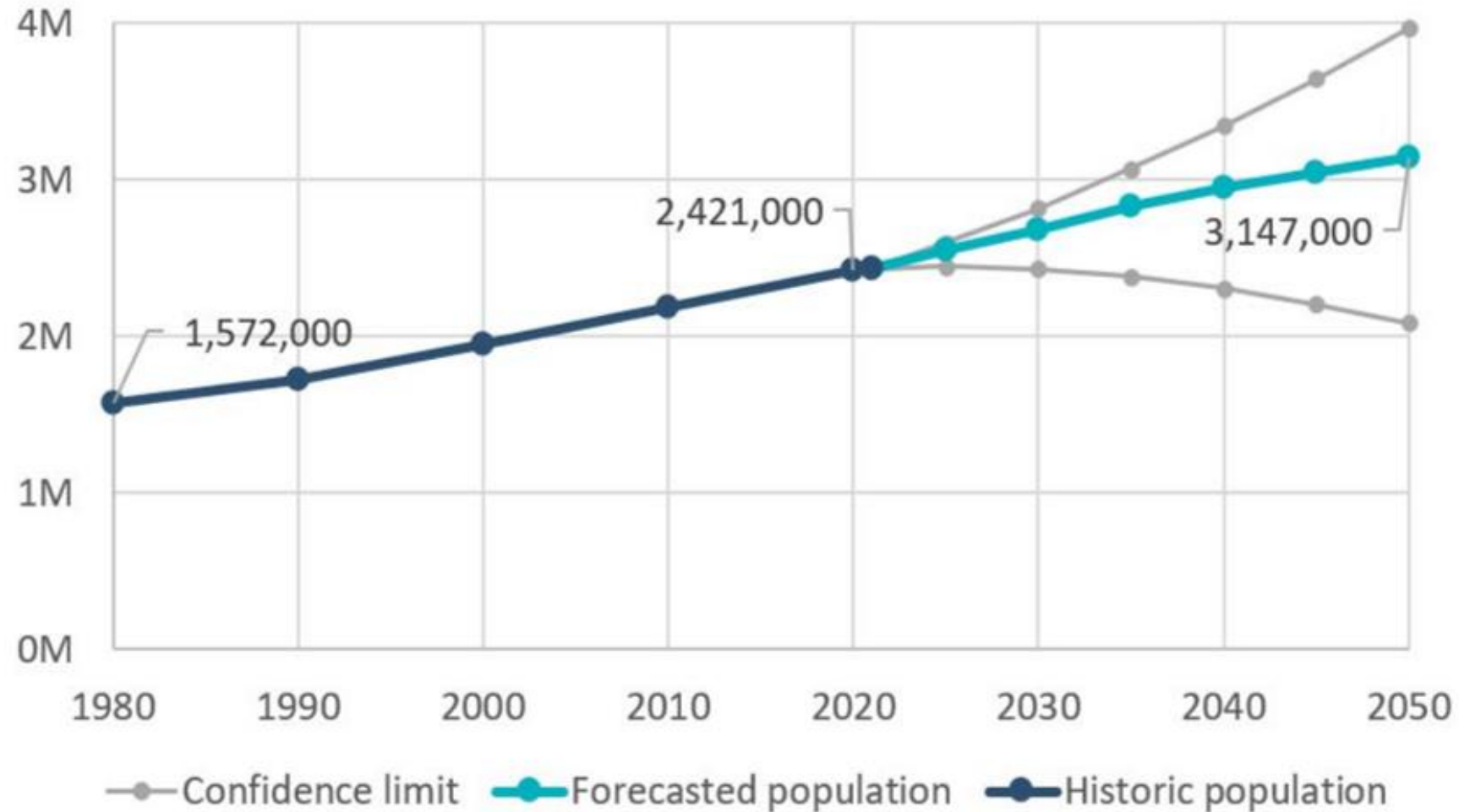
Proposed Resolution T-15-23: “Adopting the 2050 Forecast Household and Employment Variables”



MORPC



15-County Region Population

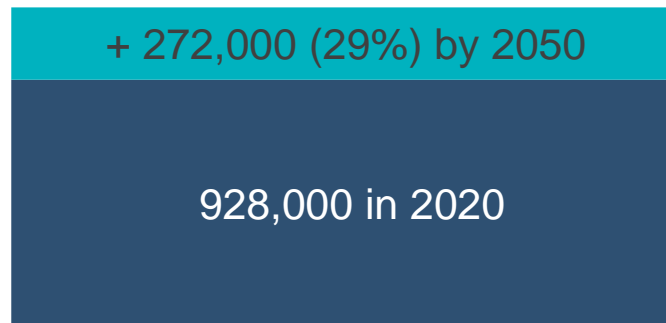




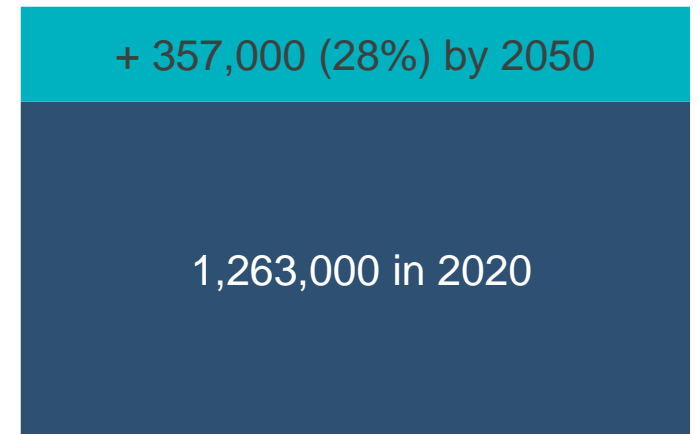
15-COUNTY REGIONAL GROWTH



Population



Households



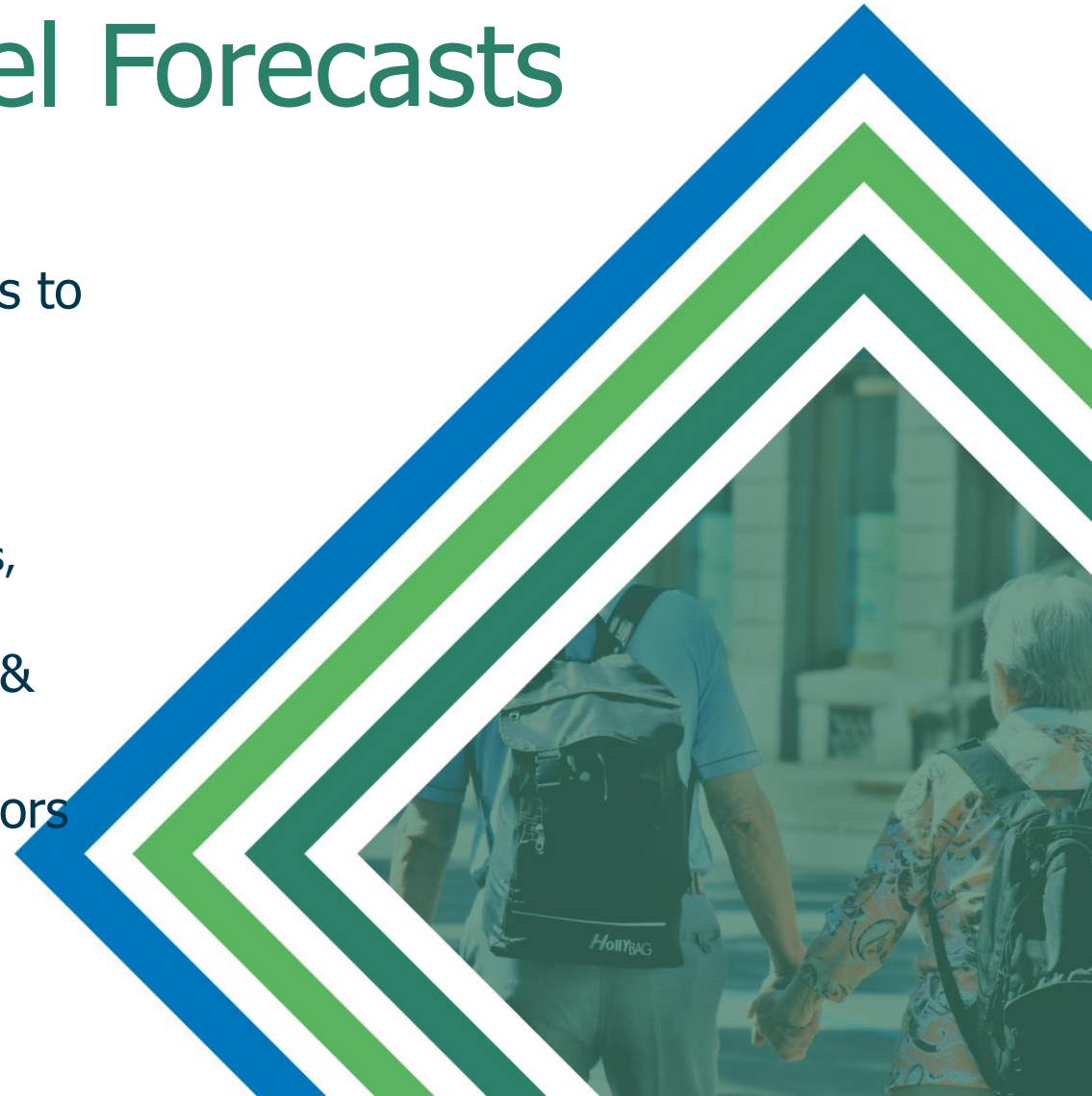
Jobs



Traffic Analysis Zone Level Forecasts

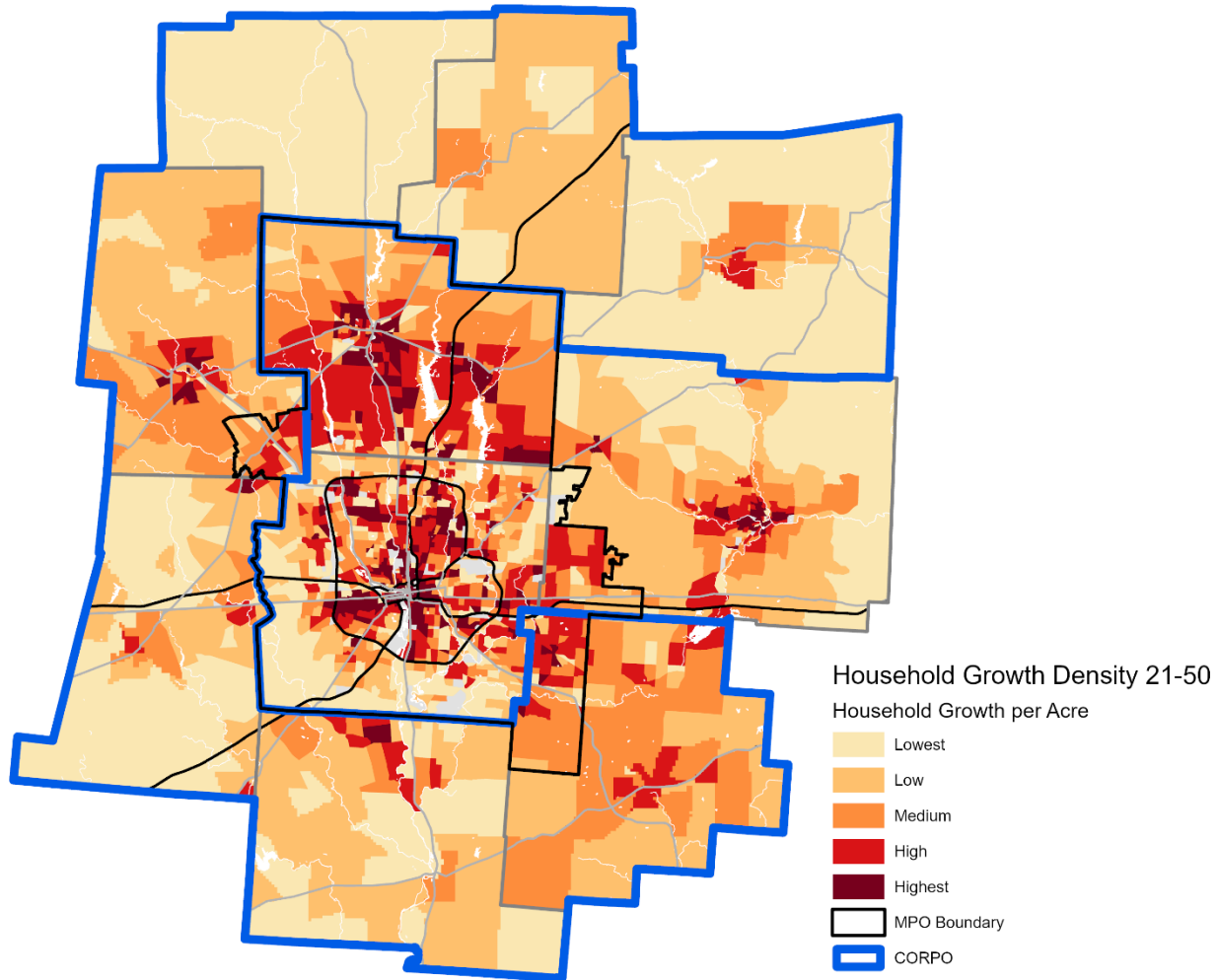
- **Process and Inputs:**

- Develop forecast year (2050) county control totals to project total growth
- Establish base year (2021) TAZ estimates of population and employment
 - (based on Decennial Census population, building permits, QCEW, parcel-level land use review)
- Update future land use from local land use plans & points of interest
- Distribute growth using land use policies and factors that attract/deter development
- Revisions based on local review

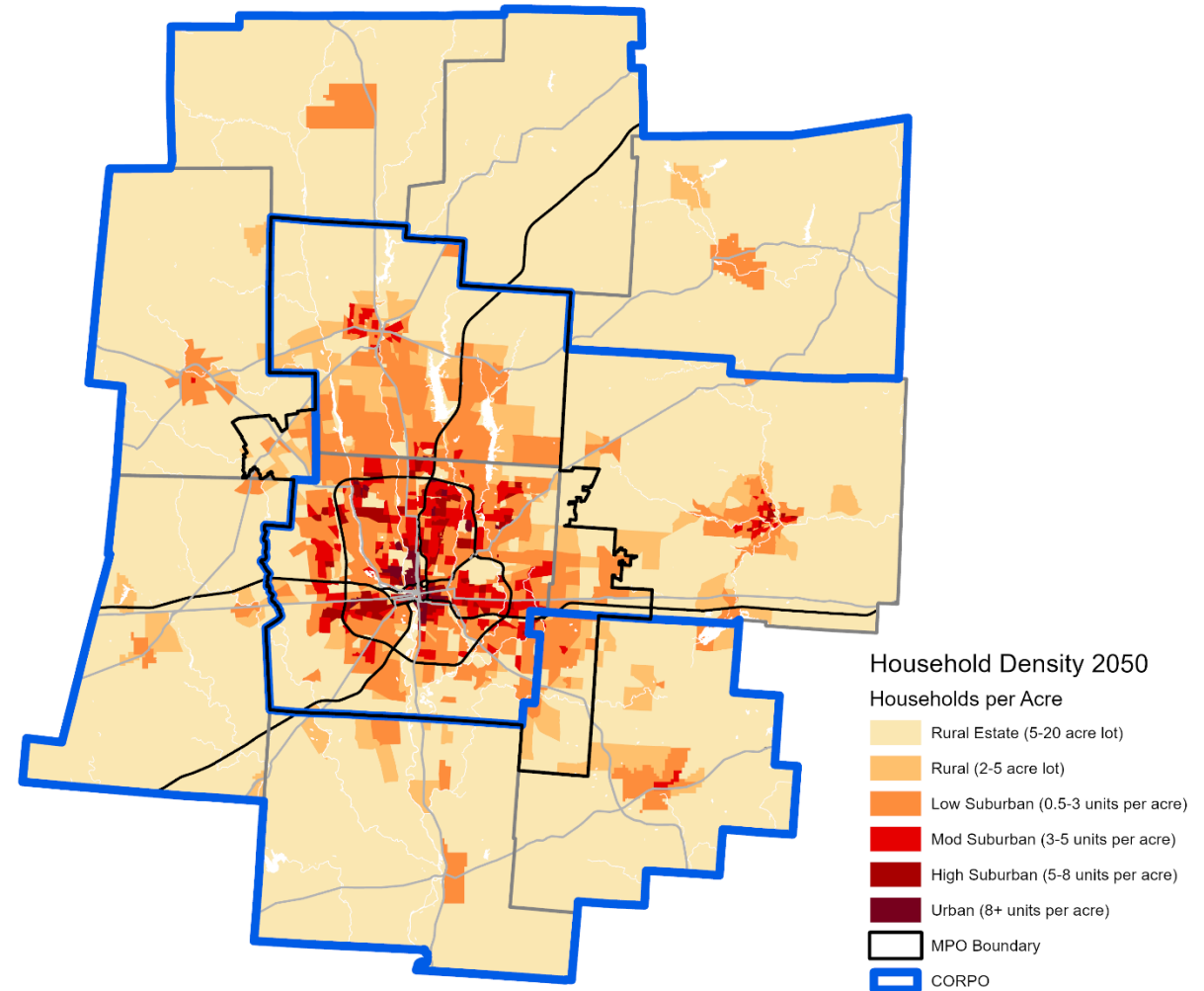


2050 Households

Growth Density

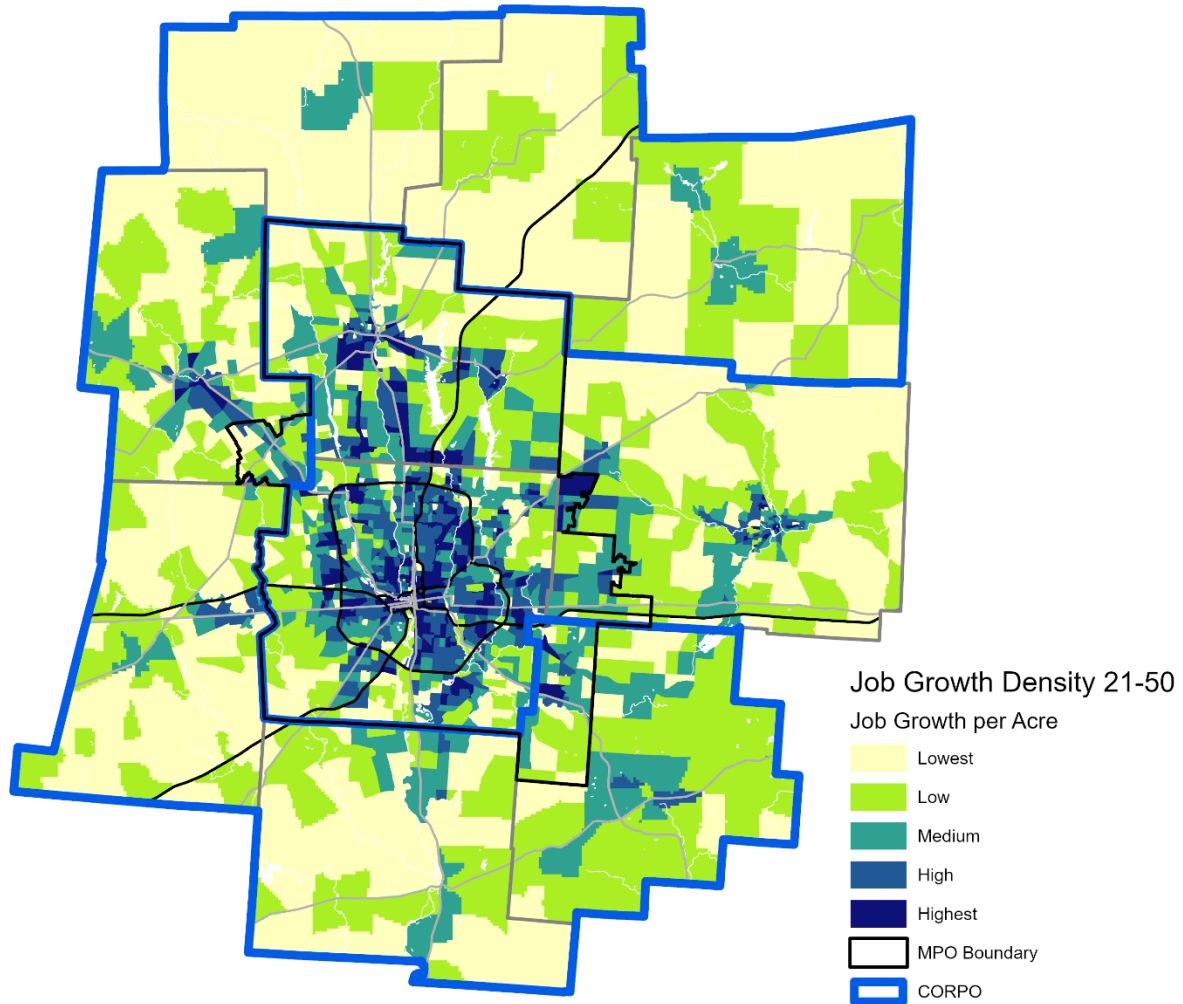


Total 2050 Density

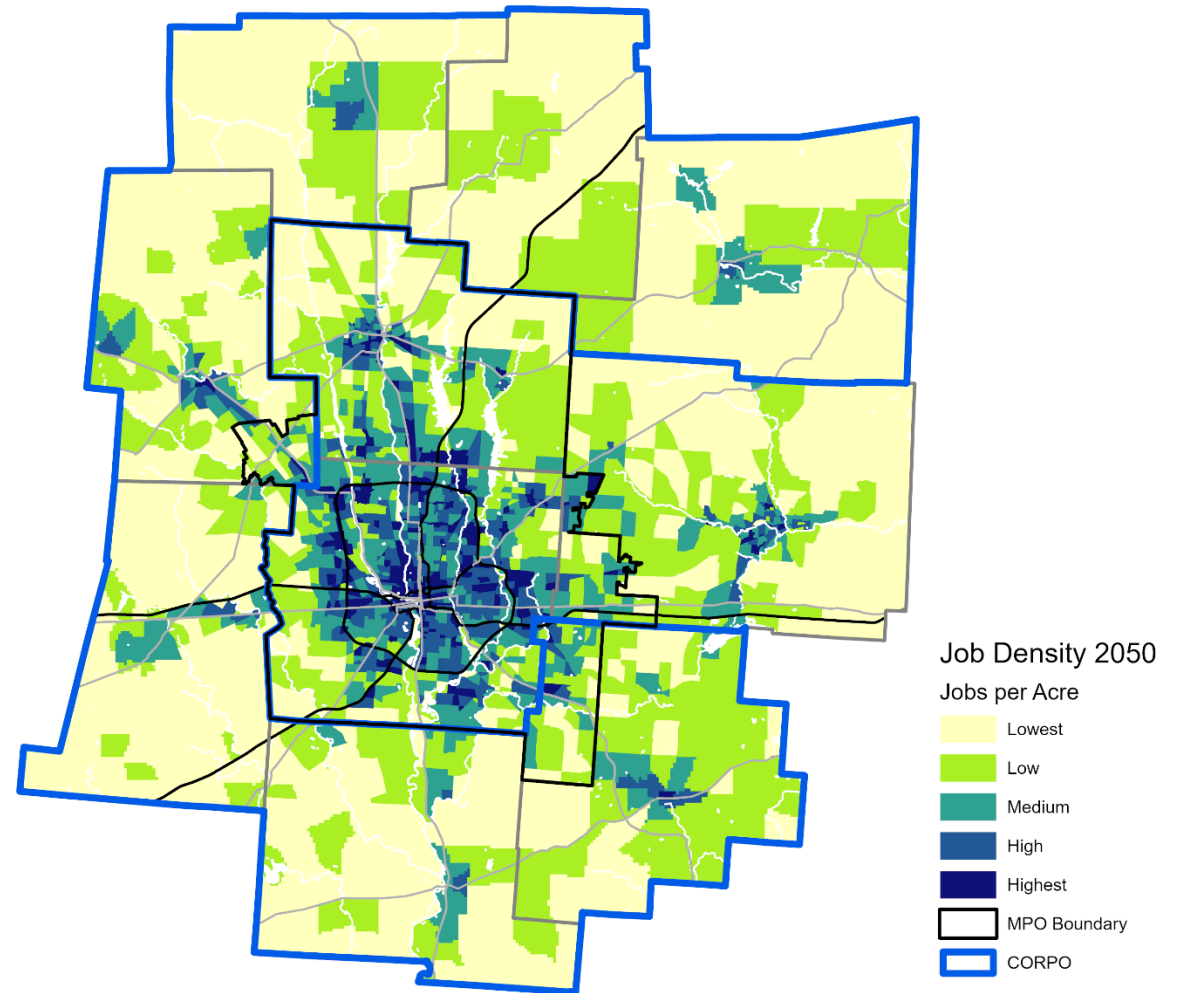


2050 Jobs

Growth Density



Total 2050 Density



Jonathan Heider, AICP

Senior Planner

T: 614.233.4154

jheider@morpc.org

Maria Schaper, AICP

Associate Director, Transportation Planning

T: 614.233.4153

mschaper@morpc.org

111 Liberty Street, Suite 100
Columbus, OH 43215



MID-OHIO REGIONAL
MORPC
PLANNING COMMISSION