

# John Glenn Columbus International Airport (CMH)



**Terminal Project and Air Service Updates**

*October 2023*



# CMH Terminal Today



## *Aging facility, opened in 1958*

- Multiple assets and systems are nearing the end of useful life
- Operationally and environmentally inefficient
- Limits air service growth



# Design and Development – Project Team



## Gensler

#1 Architecture Firm by  
Architectural Record



## MOODY•NOLAN

2021 AIA Architecture  
Firm Award



## HENSEL PHELPS

Plan. Build. Manage.

#1 Largest U.S. airport terminal contractor  
and construction management firm by  
Building Design+Construction

- Global architecture, design and planning firm **Gensler**, along with Columbus-based **Moody Nolan** are providing professional design services for a new terminal.
- **Hensel Phelps Construction Co.**, a nationally recognized leader in aviation construction, partnered with local firm **Elford** is serving as Construction Manager at Risk (CMR).









What is guiding  
the new terminal  
design?

## THE PASSENGER





## Terminal of the future

### Greater capacity

- 13 million annual passengers
- 51% increase

### Space for future growth if needed

- Lane to the east

### Designed for efficiency

- Y design brings aircraft closer to the checkpoint
- Reduces walking distances for passengers





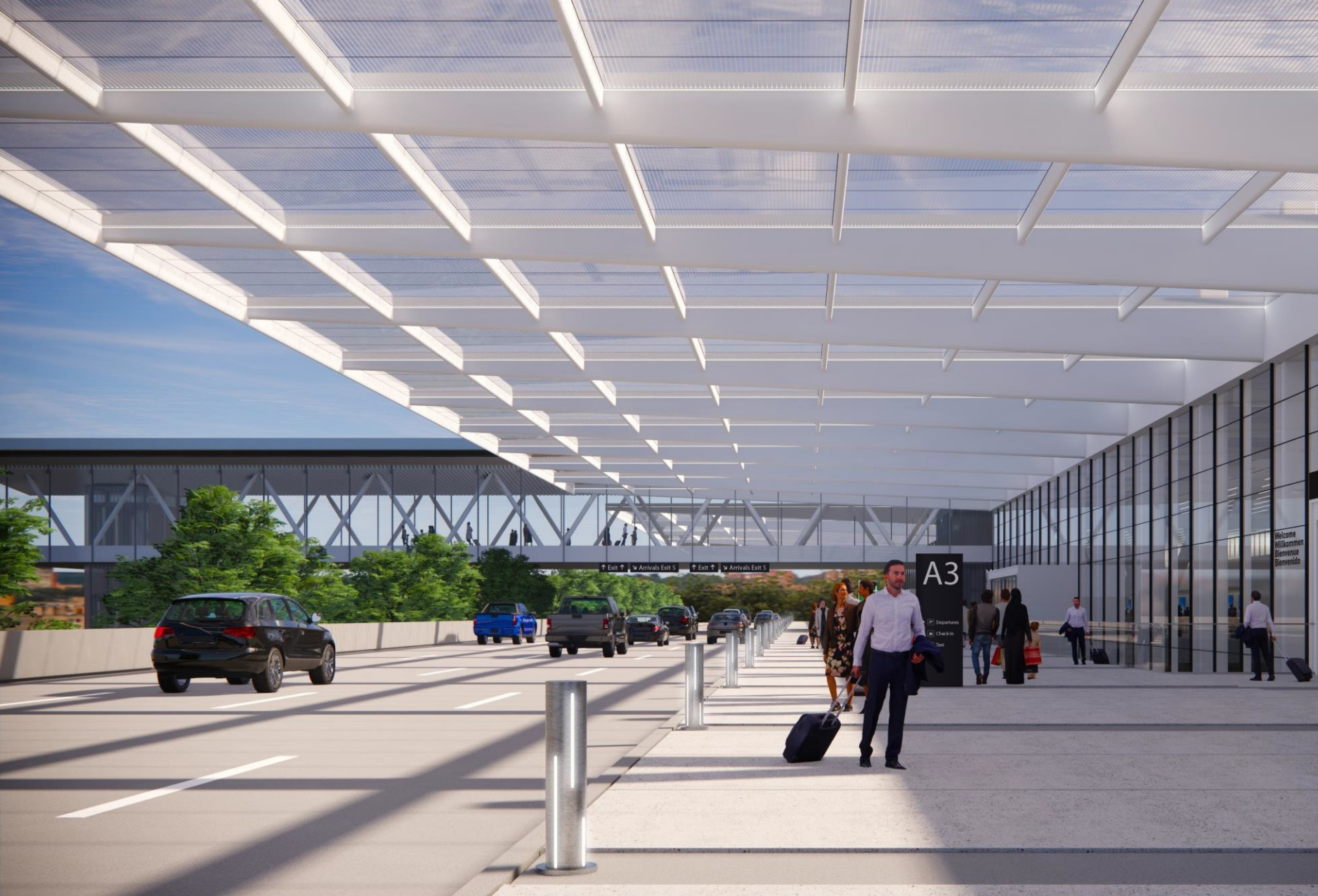
## Prepared for our region's growth

### 36 hyper-efficient gates

- Gain from today's 29 constrained gates

### Customs facilities expanded





## Efficient, safe and sustainable

### Pedestrian bridge

- Ease of access to all ground transportation options

### LEED certification





## Elevated experience

### Single checkpoint

- More concession and retail offerings
- Greater lounge access

### Line of sight

- More relaxed experience when you can see your gate





## Convenience, comfort and style

### Right-sized hold rooms

- 40-60% larger than current hold room seating areas



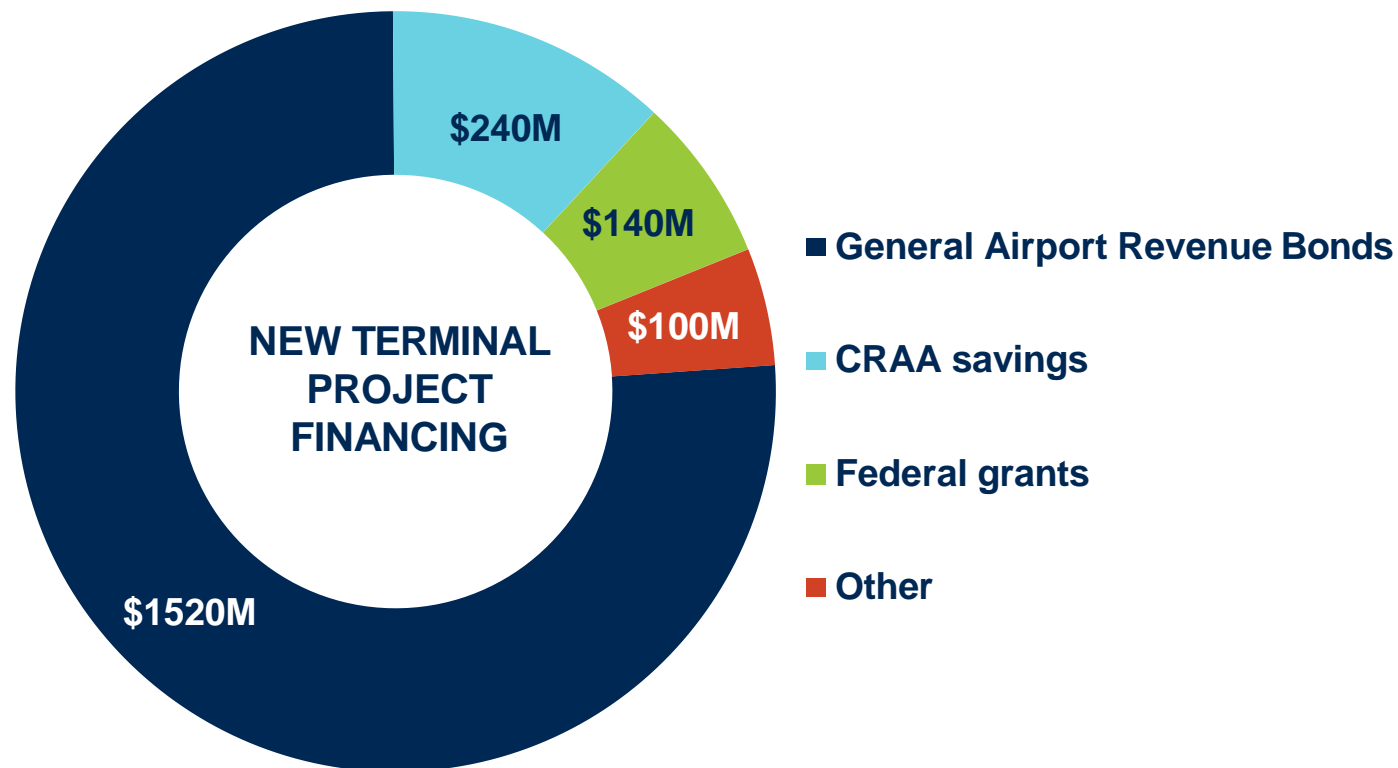
# Project Funding Sources



*Total project cost  
estimated at \$2 billion*

**Where will the funding come from?**  
*CMH airport is a self-sustaining entity.*

**CRAA does not levy taxes.**





# Thank you!