

URBAN AREA BOUNDARY & FUNCTIONAL CLASSIFICATION UPDATE

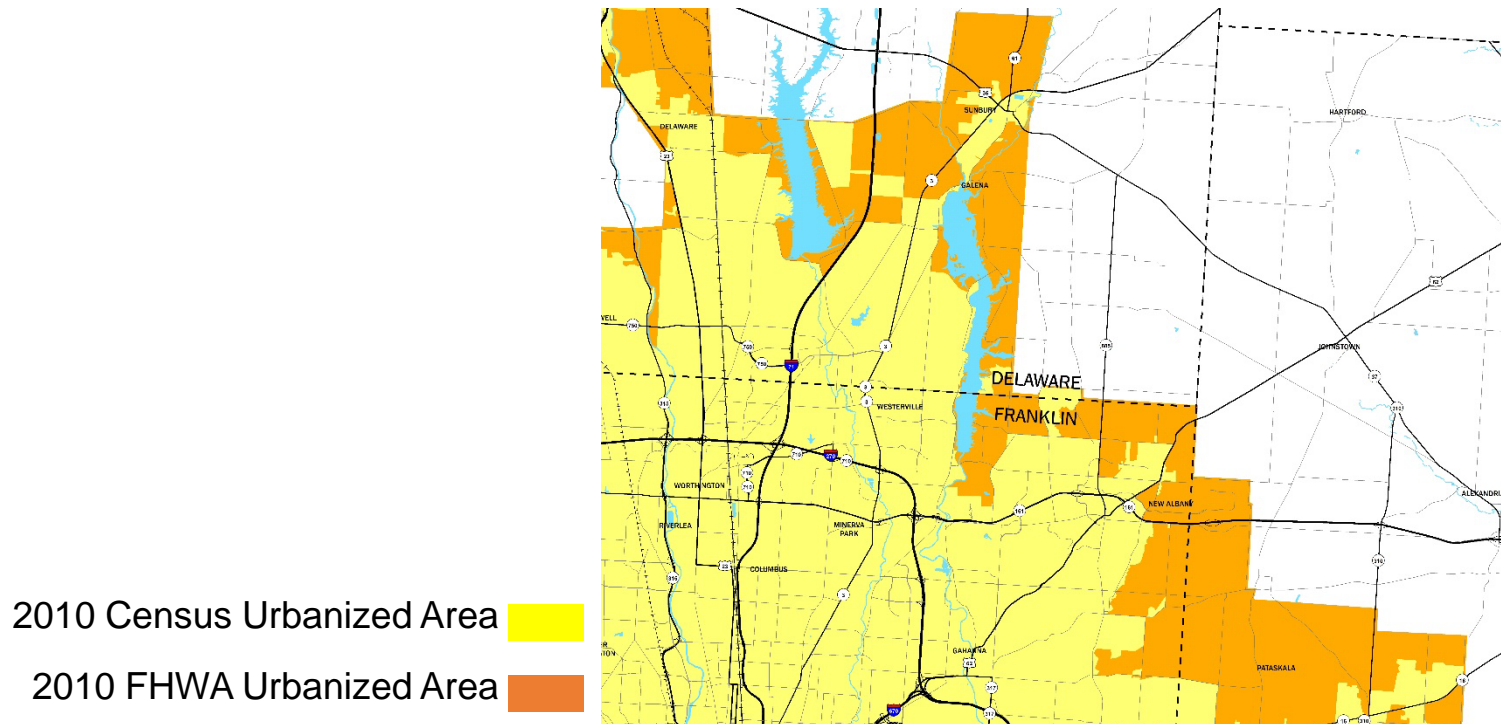
Jon Heider, MORPC



MID-OHIO REGIONAL
MORPC
PLANNING COMMISSION

URBAN AREA BOUNDARY

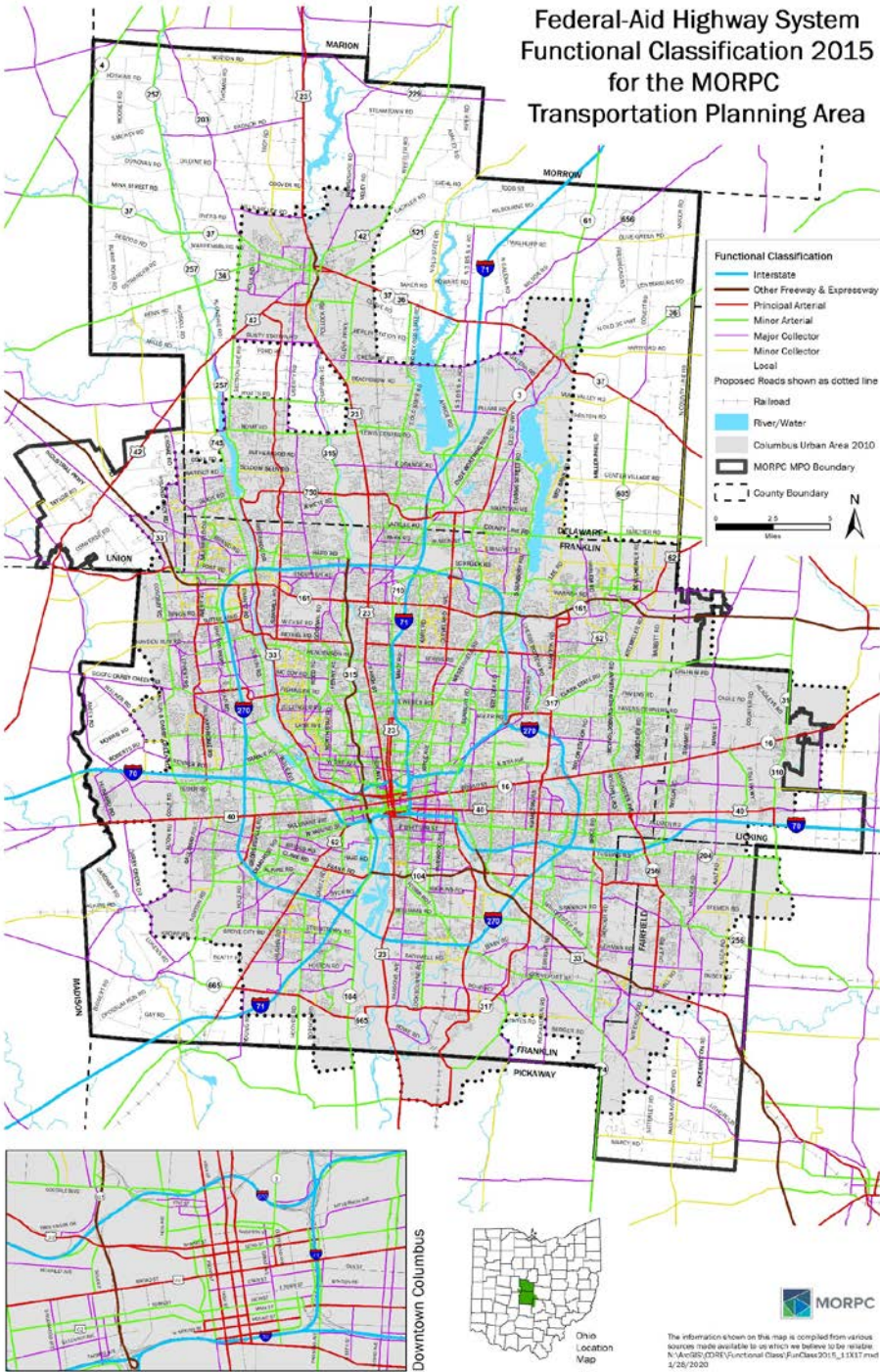
- Established every 10 years by the U.S. Census Bureau based on population and population density.
 - exclude low density areas which significantly impact the highway system
- Federal regulations allow states and local officials to cooperatively adjust or “smooth” the boundaries to be more consistent with transportation planning responsibilities and requirements
 - Establish logical transitions
 - Follow jurisdictional continuity



FEDERAL FUNCTIONAL CLASSIFICATION

- Identifies role and function of roadway within transportation network
- Identifies Federal-aid eligible facilities

Classification		Function	Federal-aid Eligible?
1	Interstate	Mobility	Yes
2	Other Freeways	Mobility	Yes
3	Other Principal Arterial	Mobility	Yes
4	Minor Arterial	Mobility/Access	Yes
5	Major Collector	Access/Mobility	Yes
6	Minor Collector	Access	In urban area only
7	Local	Access	No



REVIEW & UPDATE PROCESS



- Last region-wide update completed in 2015
- Off-cycle requests coordinated by MPO, submitted to ODOT/FHWA

REVIEW PROCESS

- In 2024 MORPC staff will work with county and municipal engineers to review the Urban Area Boundary and recommend adjustments.
- We will reach out via email with additional information on parameters for urban boundaries and key considerations for review.
- MORPC staff will share recommended boundary adjustments and solicit feedback.
- MORPC staff will then provide the finalized boundary recommendations to ODOT by the June 30, 2024, deadline.
- Upon completion of the Urban Area Boundary review, a similar review process of the Federal Functional Classifications of the roadway network beginning in November 2024.

Jon Heider

Senior Planner

Mid-Ohio Regional Planning Commission

T: 614.233.4154

jheider@morpc.org

111 Liberty Street, Suite 100

Columbus, OH 43215

