



## **Appendix B- Documentation of the Identification of Transportation Needs Process**

### **Identifying Transportation Needs**

The CORPO Transportation Plan adopted in 2018 underwent a major update in 2022 and 2023, set to be adopted in 2023. The update will account for changes in priorities because of recent growth and development as well as fluctuations in anticipated costs.

In August 2023 CORPO staff prepared and emailed a packet to subcommittee members in each CORPO county to assist them in the process of identifying and returning lists of their transportation needs. Counties returned copies of the completed lists included with the packet, which led to discussion at the subcommittee meetings, and resulted in the final project lists included in the 2023-2050 CTP.

This appendix includes the following documentation:

- A template copy of the informational packet that was provided to each county (the template county is Madison County).
- A template copy of the spreadsheet that was provided to each county to review their 2018-2040 listed projects, update information, and identify new needs (the template county is Madison County).

## CORPO 2023-2050 Transportation Plan Update

Long-range transportation plans should be revisited and updated at least every five years. Initially adopted in 2018, the CORPO Transportation Plan (CTP) is currently undergoing an update that will be adopted by the CORPO committee in November 2023. Upon adoption, the updated CTP will cover the planning horizon of 2023-2050.

The information provided in this packet is intended to be a resource for Madison County to review and develop a list of transportation needs to be included as projects in the CTP update.

### CTP Update Process

Below is an overview of the status of the CTP update process to date.

#### 2021

- *July- November-* Review, update, and adopt public involvement plan (**Complete**)

#### 2022

- *January- May-* Review, update, and adopt CTP goals and objectives (**Complete**)
- *January- May-* Develop performance measures (**Complete**)

#### 2023

- *August-* Develop 2050 population and employment growth projections (**Complete**)
- *August-* Compile candidate strategies and transportation needs (**We are here**)
- *August- September-* Evaluate strategies and projects
- *September-* Full draft CTP document
- *September- October-* Public comment period for draft CTP
- *November-* CTP adoption



### Identification of Transportation Needs

The next step in the CTP update process is to compile strategies and projects. This packet is intended to assist Madison County with identifying transportation needs and projects that will be included in the CTP update. The selected strategies and projects should help the region meet the vision, goals, performance measures, and objectives established at the beginning of the planning process.

#### Identifying Needs/Projects

To identify projects for potential inclusion in the CTP, review the information provided in this packet to help determine needs, gaps, or issue areas that should be addressed. For each recommended project to be included in the CTP, the following information should be included if available:

- Project Name
- Project Description
- Project Location
- Project Type
- Project Cost
- Desired Timeframe

In addition to including specific projects in the CTP, identified needs such as problem corridors or subareas recognized as needing further study prior to identifying a specific project can also be included in the CTP. Identified needs may also include policy or programmatic recommendations for other agencies.

Use the excel workbook provided with this packet to identify transportation needs- projects, studies, problem areas, subareas needing further study, policy, or programmatic recommendations, etc.- that should be evaluated for inclusion in the 2023-2050 CTP update.

### 2.1.1 Document Contents

The remainder of this document starts out with historical and projected population and job information followed by a section for each of the CTP goals and related objectives, performance measures, and relevant data concerning existing conditions and trends along with guiding questions to assist with identifying projects/needs. The last section includes the projects that were included in the 2018 CTP along with the projects in the current State Fiscal Year 24-27 Transportation Improvement Program. The previous CTP projects are included in the excel spreadsheet for review and update while the TIP projects are for reference only and will be included in the 2023-2050 CTP as appropriate.

Below is a list of the contents of the remaining sections of the document. Click a section to be taken to that section of the document.

#### 2.1.1.1 REMAINING DOCUMENT SECTIONS

1. [\*\*Population and Employment: Historical and Projections to 2050- page 3\*\*](#)
  - 1.1. [Existing Conditions and Trends- Population and Employment](#)
  - 1.2. [2050 Projections- Populations, Households, and Jobs](#)
  
2. [\*\*CORPO Transportation Plan Goals and Objectives- page 10\*\*](#)
  - 2.1. [Goal 1- Preserve and Maintain Existing Transportation System in Good Repair](#)
    - 2.1.1. Related Performance Measures
  - 2.2. [Goal 2- A Safe Transportation System for All Users](#)
    - 2.2.1. Related Performance Measures
  - 2.3. [Goal 3- Accessibility and mobility options for all users](#)
    - 2.3.1. Related Existing Conditions
  - 2.4. [Goal 4- An integrated, connected, and coordinated transportation system](#)
    - 2.4.1. Related Existing Conditions
  - 2.5. [Goal 5- A transportation system that supports a collaborative and focused approach to achieve economic vitality](#)
    - 2.5.1. Related Existing Conditions
  - 2.6. [Goal 6- Preserve and enhance environmental resources and sustainability through the transportation system](#)
    - 2.6.1. Related Existing Conditions
  
3. [\*\*Reviewing & Updating Transportation Needs- page 22\*\*](#)
  - 3.1. [2018-2040 CORPO Transportation Plan and SFY 24-27 Transportation Improvement Program Projections](#)

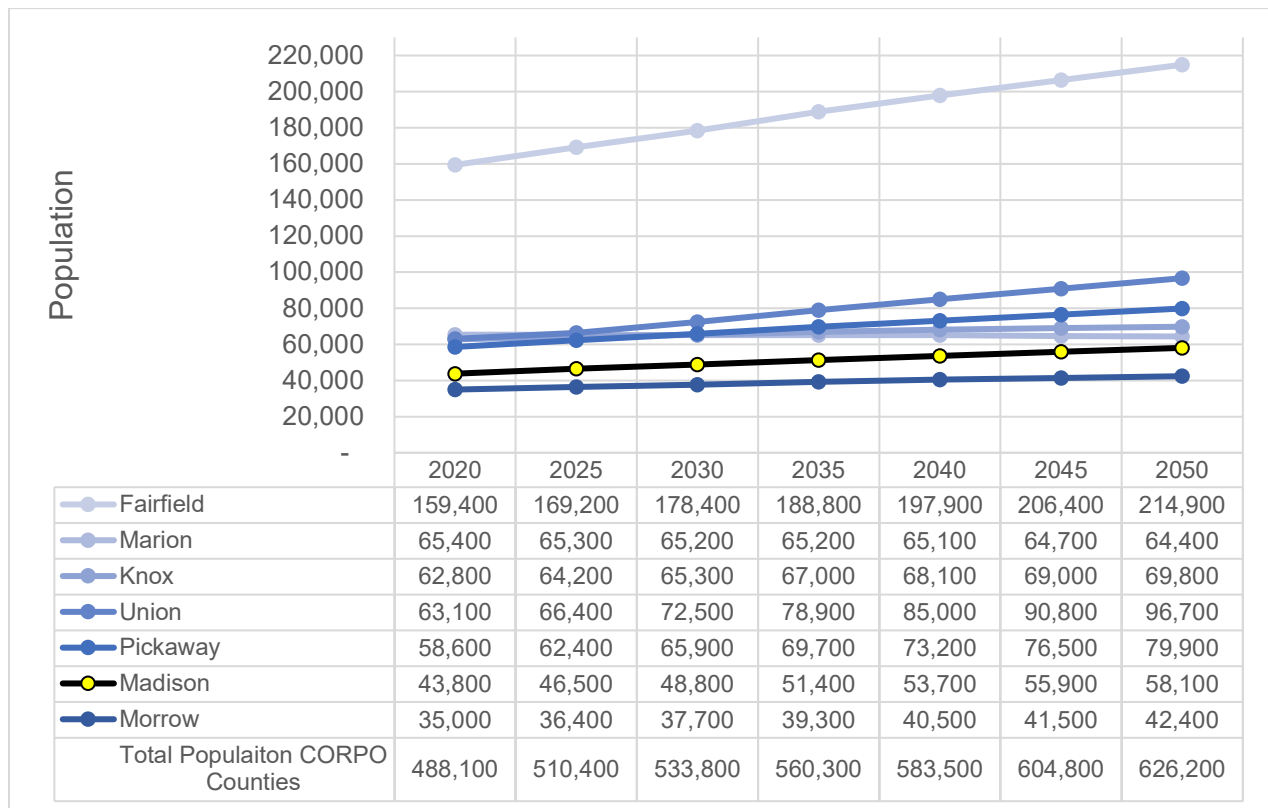
# 1. Population and Employment: Historical and Projections to 2050

Use this section to review existing demographic and employment conditions and trends and understand what population and employment growth is projected between now and 2050.

## 1.1. Existing Conditions and Trends- Population and Employment

The following chart and table provide historical population and employment data for the CORPO counties.

*CORPO Counties, Historic Population and Population Change, 1980-2021*



Data Source: Census Population Estimates Program

\* 2021 Data Source: 5-Year ACS Estimates

CORPO Counties, Employment Change, 2011-2020

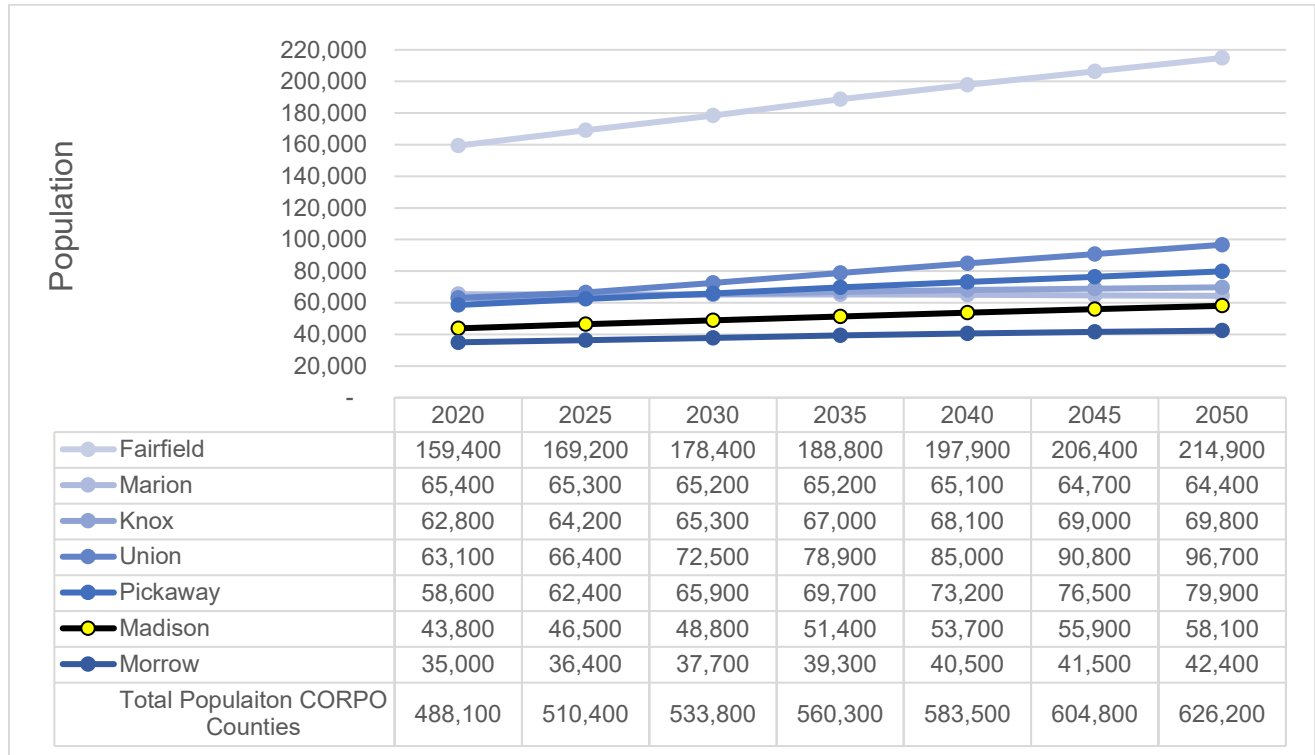
| County    | Employed/Unemployed        | 2011 5-Year Estimate* |                  | 2021 Estimate* |                  |
|-----------|----------------------------|-----------------------|------------------|----------------|------------------|
|           |                            | # of persons          | % of Labor Force | # of persons   | % of Labor Force |
| Fairfield | Employed                   | 68,779                | 92.42%           | 77,027         | 95.78%           |
|           | Unemployed                 | 5,640                 | 7.58%            | 3,397          | 4.22%            |
|           | Total civilian labor force | 74,419                | 100.00%          | 80,424         | 100.00%          |
| Marion    | Employed                   | 27,995                | 90.62%           | 26,078         | 93.74%           |
|           | Unemployed                 | 2,897                 | 9.38%            | 1,742          | 6.26%            |
|           | Total civilian labor force | 30,892                | 100.00%          | 27,820         | 100.00%          |
| Knox      | Employed                   | 28,211                | 91.77%           | 29,141         | 95.68%           |
|           | Unemployed                 | 2,531                 | 8.23%            | 1,315          | 4.32%            |
|           | Total civilian labor force | 30,742                | 100.00%          | 30,456         | 100.00%          |
| Union     | Employed                   | 24,033                | 94.09%           | 32,096         | 97.09%           |
|           | Unemployed                 | 1,510                 | 5.91%            | 963            | 2.91%            |
|           | Total civilian labor force | 25,543                | 100.00%          | 33,059         | 100.00%          |
| Pickaway  | Employed                   | 23,156                | 92.35%           | 25,137         | 95.54%           |
|           | Unemployed                 | 1,918                 | 7.65%            | 1,174          | 4.46%            |
|           | Total civilian labor force | 25,074                | 100.00%          | 26,311         | 100.00%          |
| Madison   | Employed                   | 19,219                | 93.99%           | 19,382         | 96.15%           |
|           | Unemployed                 | 1,228                 | 6.01%            | 776            | 3.85%            |
|           | Total civilian labor force | 20,447                | 100.00%          | 20,158         | 100.00%          |
| Morrow    | Employed                   | 16,260                | 92.55%           | 17,633         | 97.23%           |
|           | Unemployed                 | 1,308                 | 7.45%            | 503            | 2.77%            |
|           | Total civilian labor force | 17,568                | 100.00%          | 18,136         | 100.00%          |

Data Source: \* 2011 5-Year Estimate is sourced from ACS 5-Year Estimates, \*\* 2021 MORPC Estimate is sourced from MORPC 2021-2050 Projections

### 1.2. 2050 Projections- Population, Households and Jobs

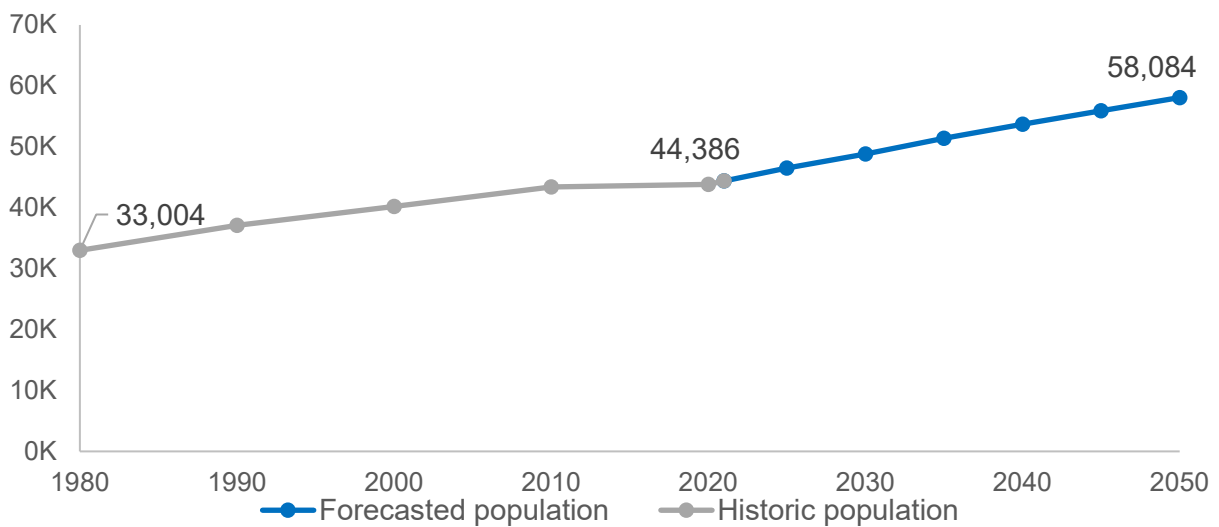
The following maps and charts provide household and job projections data for Madison County.

#### Population Growth Projection, CORPO Counties, 2020-2050



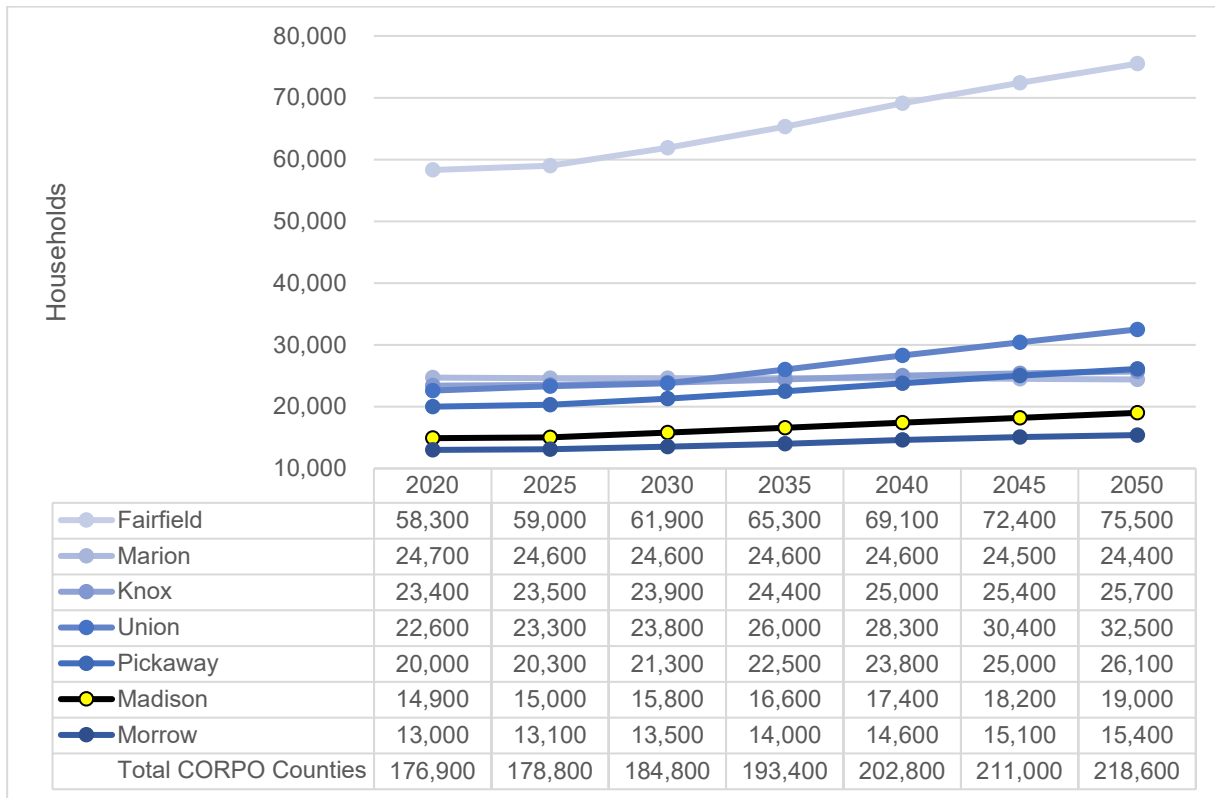
Data Source: MORPC 2021-2050 projections

#### Historic Population and Population Growth Projection, Madison County, 1980-2050



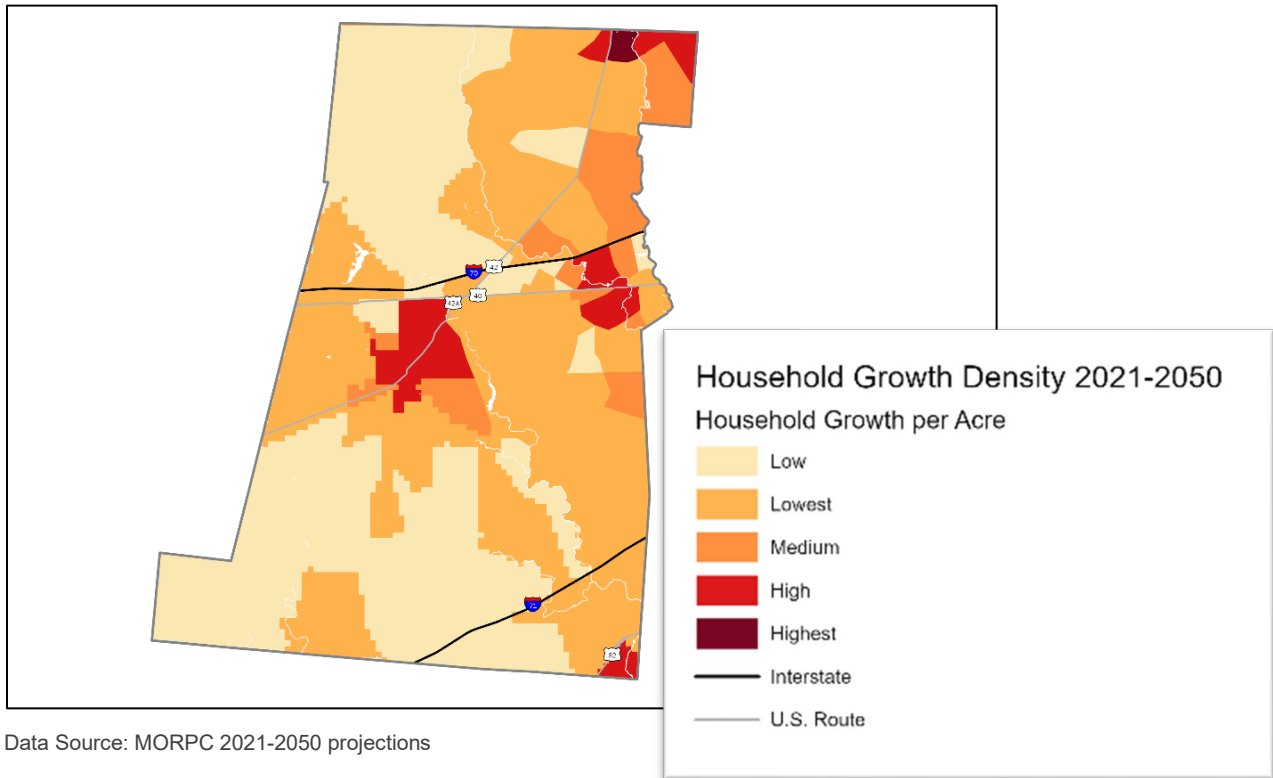
Data Source: MORPC 2021-2050 projections

Household Growth Projection, CORPO Counties, 2020-2050



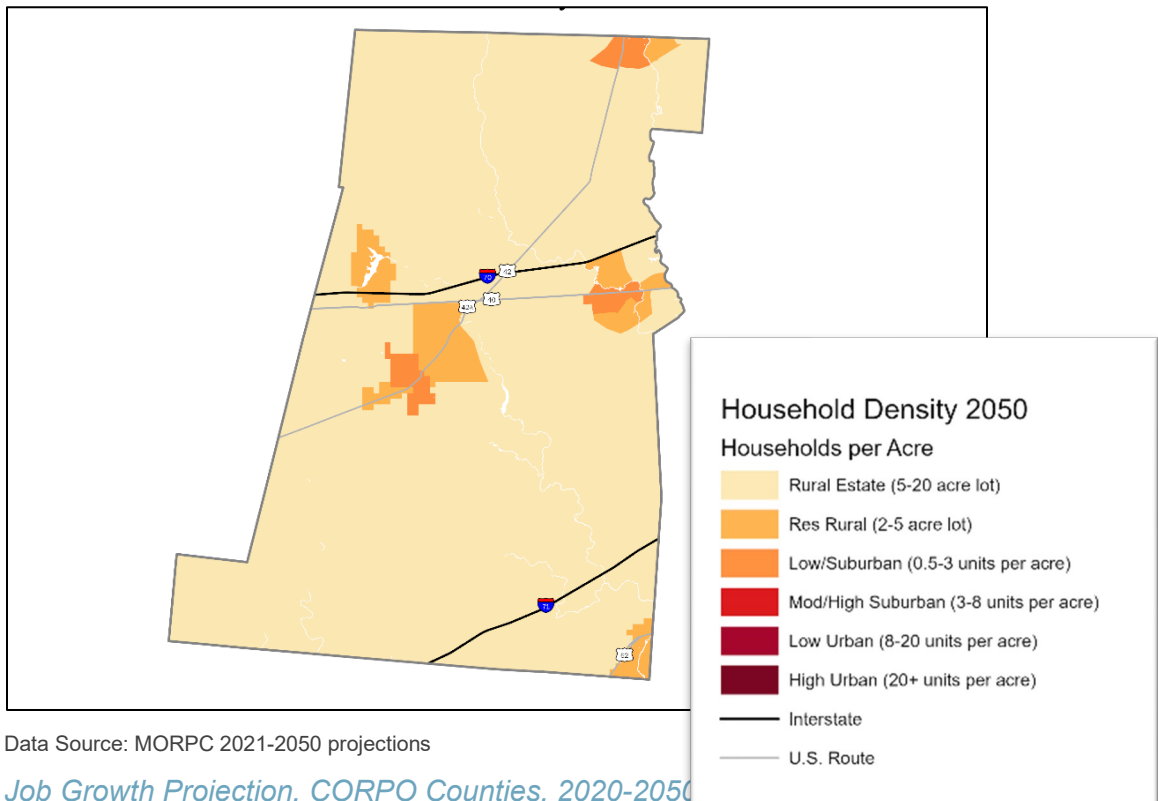
Data Source: MORPC 2021-2050 projections

*Household Growth Density, Madison County, 2021-2050 (Draft)*



Data Source: MORPC 2021-2050 projections

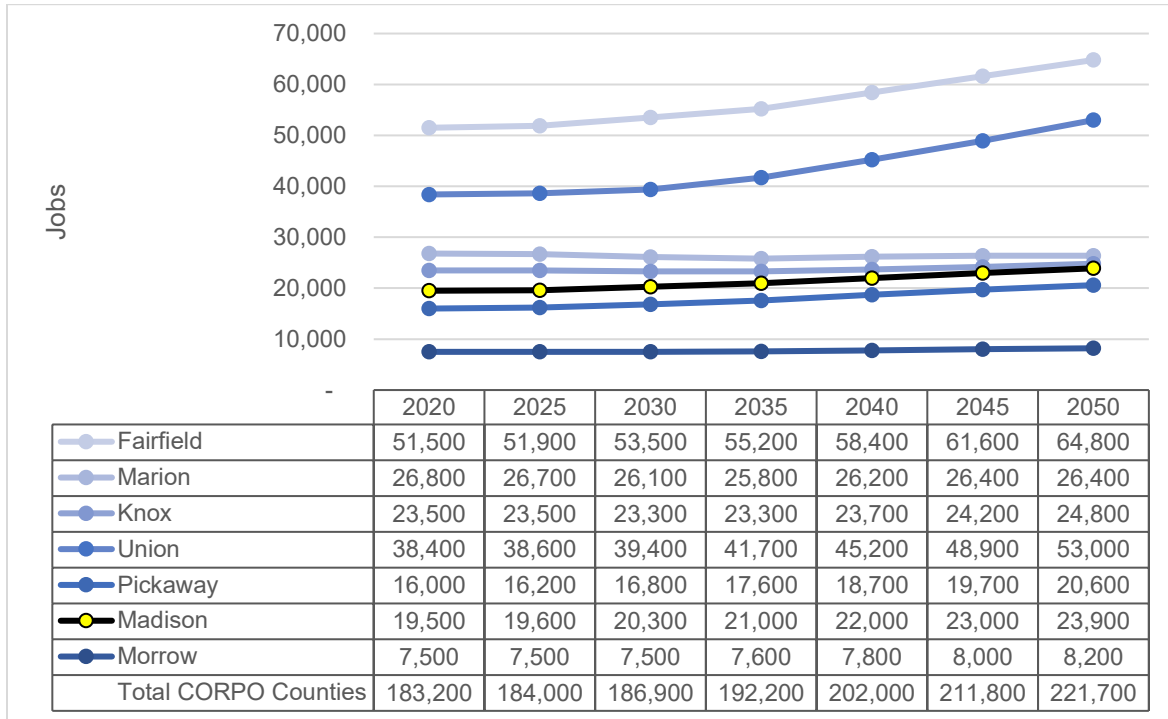
*Household Density, Madison County, 2050 (Draft)*



Data Source: MORPC 2021-2050 projections

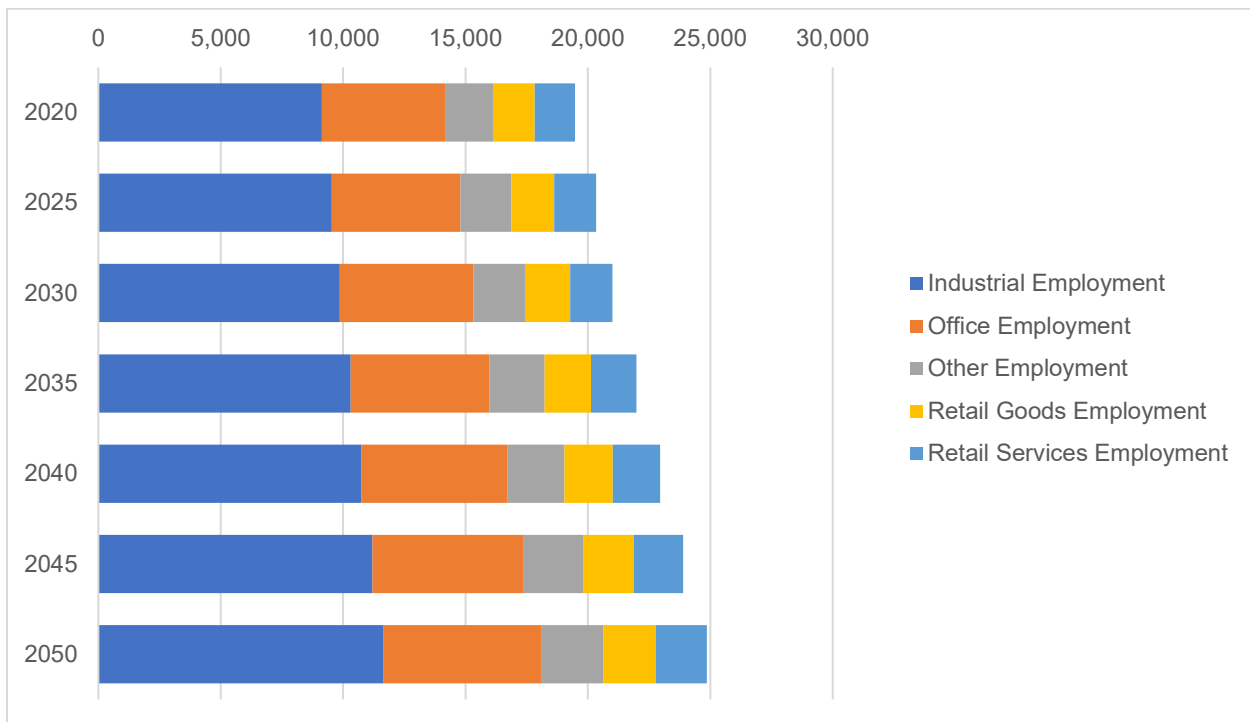
*Job Growth Projection, CORPO Counties, 2020-2050*





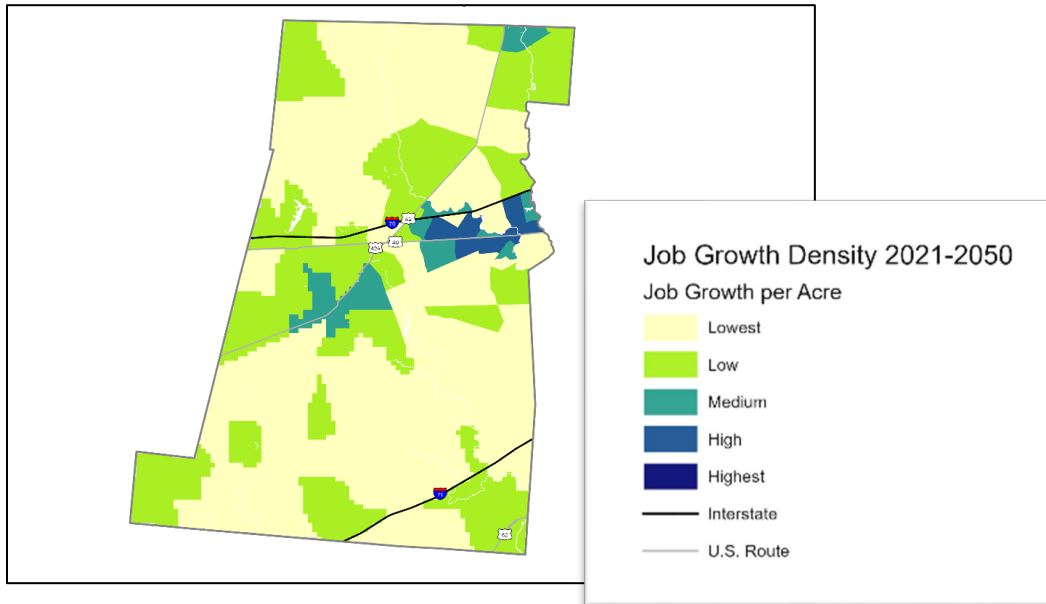
Data Source: MORPC 2021-2050 projections

### Jobs by Employment Type, Madison County, 2020-2050



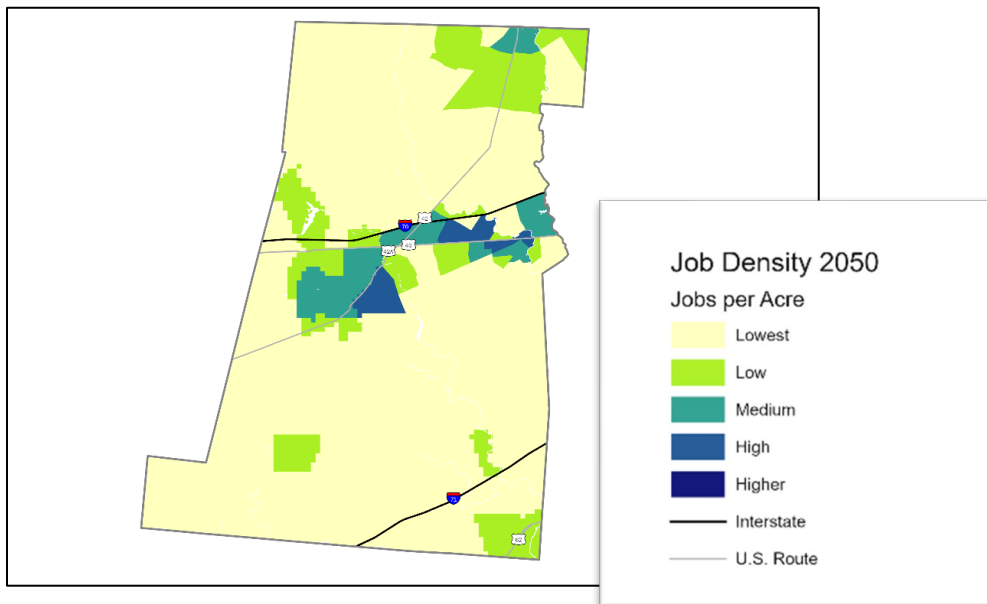
Data Source: MORPC 2021-2050 projections

### Job Growth Density, Madison County, 2021-2050 (Draft)



Data Source: MORPC 2021-2050 projections

*Job Density, Madison County, 2050 (Draft)*



Data Source: MORPC 2021-2050 projections

*Additional Resources on Mid-Ohio Open Data*

**Mid-Ohio Open Data:** Mid-Ohio Open Data is a one-stop location for all MORPC publicly available datasets. Here you will find maps, downloadable GIS and tabular data, and more.

- **2020-2050 County Forecasts:** Use the menus on the right side of the page to select a variable and select a county to view current and forecasted demographics including population, households, jobs, and workforce.

## 2. CORPO Transportation Plan Goals and Objectives

The following provides the goals and objectives guiding the development of the 2023-2050 CORPO Transportation Plan. When available, additional data is included to further quantify the conditions of some objectives. Finally, there are guiding questions to consider when identifying transportation needs and projects to be included in the CTP.

### 2.1. Goal 1- Preserve and Maintain Existing Transportation System in Good Repair

| 2.1.1.2 RELATED OBJECTIVES   | 2.1.1.3 GUIDING QUESTIONS   |
|--|---|
| <ul style="list-style-type: none"> <li>Minimize the number of bridges structurally deficient or functionally obsolete.</li> <li>Maximize the miles of pavement in acceptable condition.</li> <li>Maximize the miles of bike and pedestrian paths in acceptable condition.</li> </ul> | <p><i>What facilities- bridges, pavement, bike/pedestrian paths- are deficient or functionally obsolete or are likely to become deficient or functionally obsolete before 2050?</i></p> |

#### 2.1.2 2.1.1. Related Performance Measures

The following tables and maps reflect the current conditions related to the adopted performance measures in Madison County.

##### 2.1.2.1.1 ALL CORPO COUNTIES, BRIDGE CONDITIONS, 2023

| NHS Bridge Condition |       |      |      |        |        |
|----------------------|-------|------|------|--------|--------|
| County               | Total | Good | Poor | % Good | % Poor |
| Fairfield            | 35    | 26   | 0    | 74.29% | 0.00%  |
| Knox                 | 13    | 10   | 0    | 76.92% | 0.00%  |
| Madison              | 35    | 25   | 0    | 71.43% | 0.00%  |
| Marion               | 25    | 20   | 0    | 80.00% | 0.00%  |
| Morrow               | 17    | 15   | 0    | 88.24% | 0.00%  |
| Pickaway             | 22    | 16   | 1    | 72.73% | 4.55%  |
| Union                | 48    | 30   | 0    | 62.50% | 0.00%  |
| Total                | 195   | 142  | 1    | 72.82% | 0.51%  |

DATA SOURCE: 2023 BRIDGE DATA ODOT TIMS



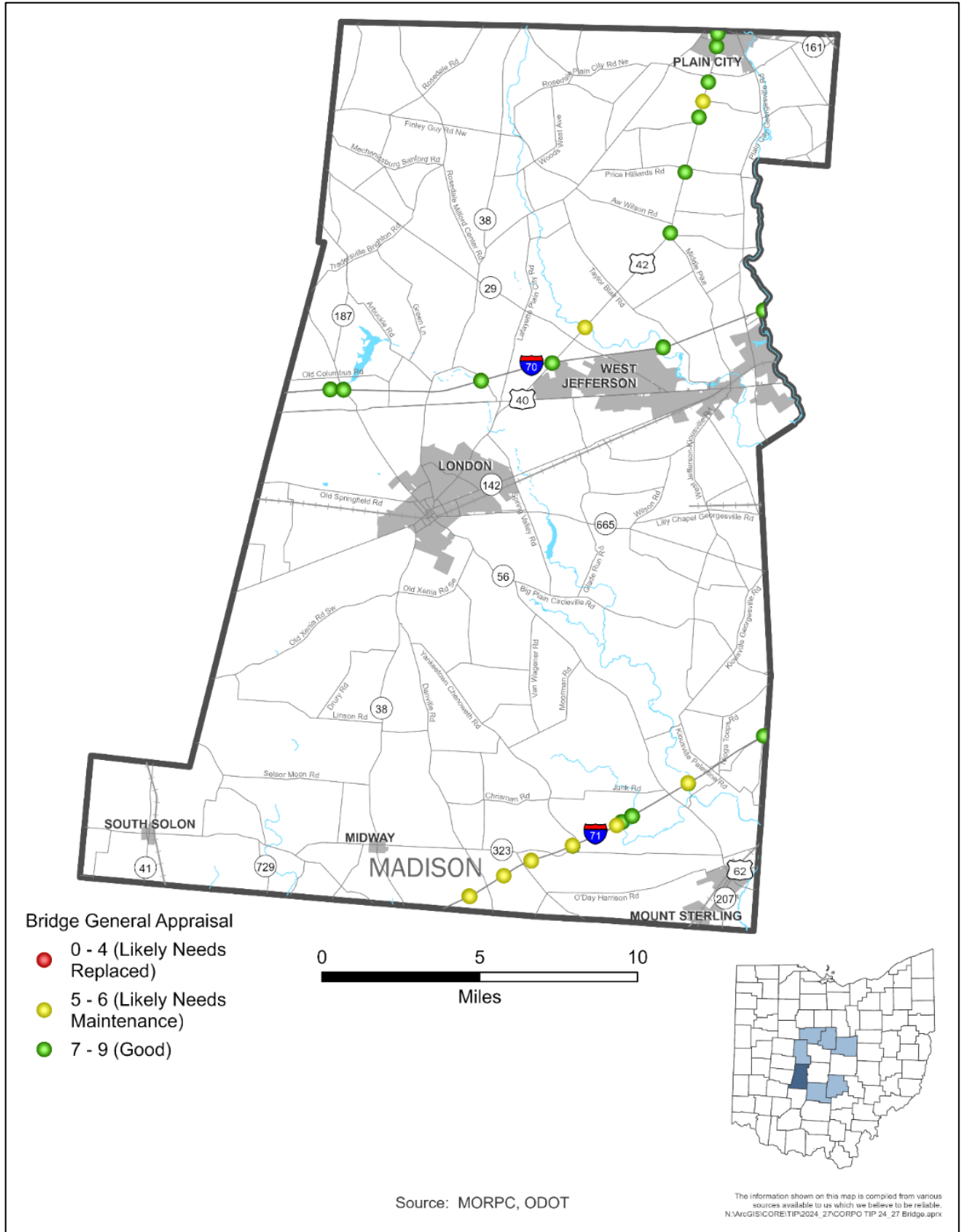
2.1.2.1.2 ALL CORPO COUNTIES, PAVEMENT CONDITION RATINGS, 2023

| County    | Centerline Miles | Interstate |        |      |        | Non-Interstate NHS |        |      |        | Non-NHS |        |       |        |
|-----------|------------------|------------|--------|------|--------|--------------------|--------|------|--------|---------|--------|-------|--------|
|           |                  | Good       | % Good | Poor | % Poor | Good               | % Good | Poor | % Poor | Good    | % Good | Poor  | % Poor |
| Fairfield | 338.86           | 0.00       | 0.00%  | 0    | 0      | 24.84              | 7.33%  | 0    | 0      | 238.32  | 70.33% | 8.65  | 2.55%  |
| Knox      | 231.18           | 0.00       | 0.00%  | 0    | 0      | 16.44              | 7.11%  | 0    | 0      | 133.02  | 57.54% | 2.94  | 4.04%  |
| Madison   | 225.57           | 24.93      | 11.05% | 0    | 0      | 11.71              | 5.19%  | 0    | 0      | 133.56  | 59.21% | 2.52  | 1.12%  |
| Marion    | 290.055          | 0.00       | 0.00%  | 0    | 0      | 17.84              | 6.15%  | 0    | 0      | 213.02  | 73.44% | 7.87  | 2.71%  |
| Morrow    | 199.463          | 19.91      | 9.98%  | 0    | 0      | 0.00               | 0.00%  | 0    | 0      | 157.98  | 79.20% | 4.25  | 2.13%  |
| Pickaway  | 225.829          | 3.18       | 1.41%  | 0    | 0      | 22.76              | 10.08% | 0    | 0      | 149.40  | 66.16% | 2.56  | 1.13%  |
| Union     | 284.468          | 0.00       | 0.00%  | 0    | 0      | 22.69              | 7.97%  | 0    | 0      | 185.92  | 65.36% | 7.38  | 2.59%  |
| Total     | 1795.425         | 48.03      | 2.68%  | 0    | 0      | 116.28             | 6.48%  | 0    | 0      | 1211.23 | 67.46% | 36.17 | 2.01%  |

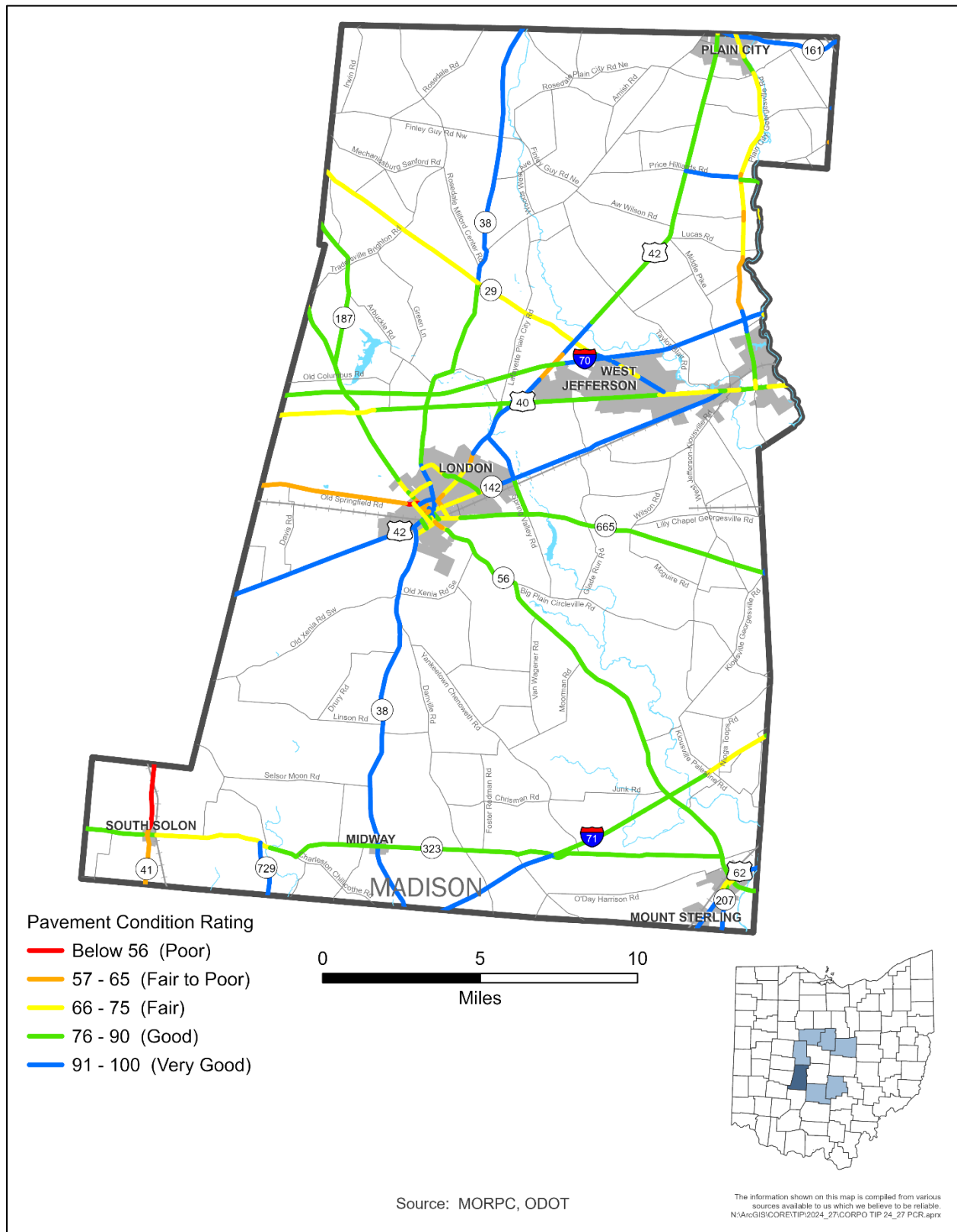
\*PCR Ratings: Good- 76-100, Poor- Below 56

DATA SOURCE: 2023 PCR DATA ODOT TMS

### 2.1.2.1.3 Madison County Bridge Condition, 2023



### 2.1.2.1.4 MADISON COUNTY PAVEMENT CONDITION RATINGS, 2023



## 2.2. Goal 2- A Safe Transportation System for All Users

| 2.1.2.2 RELATED OBJECTIVES  | 2.1.2.3 GUIDING QUESTIONS   |
|---|---|
| <ul style="list-style-type: none"> <li>Minimize crashes including pedestrian and bicycle related crashes.</li> <li>Improve user education to minimize unsafe driving behaviors such as a lack of seatbelt use, distracted driving, impaired driving, and others.</li> </ul> | <ul style="list-style-type: none"> <li>Are there areas (intersections/corridors) with high concentrations of bike/pedestrian crashes that need to be addressed with safety modifications?</li> <li>Are there areas (intersections/corridors) with bike/pedestrian frequent near misses that need to be addressed with safety modifications?</li> <li>Are there activities that can address the safety of the transportation system by minimizing unsafe driving behaviors?</li> </ul> |

### 2.2.1. Related Performance Measures

The following tables and maps detail fatal and serious injury crashes and reflect the current conditions related to the adopted safety performance measures in Madison County.

#### 2.1.2.3.1 MADISON COUNTY, FATAL AND SERIOUS INJURY CRASHES PERFORMANCE MEASURE, 2017-2021

| PERFORMANCE MEASURE                         | 2017-2021 Average (Benchmark) | 2025       |              | 2050       |              | GRADE |
|---|-------------------------------|------------|--------------|------------|--------------|-------|
|   |                               | TARGET     | ON TRACK FOR | TARGET     | ON TRACK FOR |       |
| Number of Fatalities                        | 6.8                           | -8%        | -100.0%      | -27%       | -100.0%      | ✓     |
|   |                               | N/A        | 0            | N/A        | 0            |       |
| Number of Serious Injuries*                 | 54.2                          | -8%        | -44.3%       | -27%       | -100.0%      | ✓     |
|   |                               | N/A        | 30           | N/A        | 0            |       |
| Non-Motorized Fatalities & Serious Injuries | 5.4                           | -8%        | 33.3%        | -27%       | 172.2%       | X     |
|   |                               | N/A        | 7.2          | N/A        | 14.7         |       |
|   | 2021                          | MPO TARGET |              | MPO TARGET |              |       |
| Rate of Fatalities / 100 MVMT               | 0.25                          | 0.69       |              | 0.54       |              | ✓     |
| Rate of Serious Injuries / 100 MVMT         | 7.07                          | 5.64       |              | 4.43       |              | X     |

DATA SOURCE: GCAT CRASHES 2017-2021



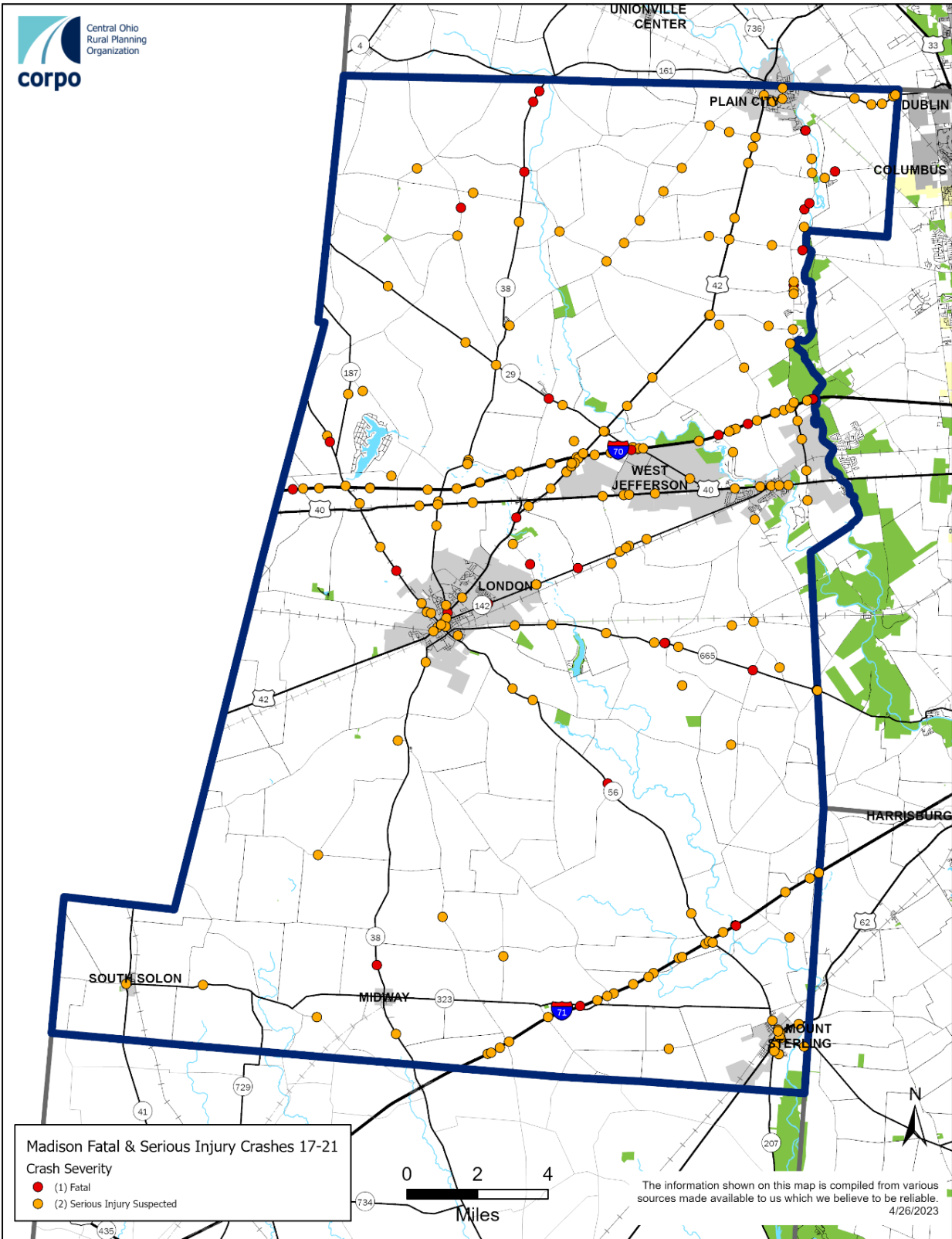
2.1.2.3.2 ALL CORPO COUNTIES, FATAL AND SERIOUS INJURY CRASHES  
PERFORMANCE MEASURE, 2017-2021

| County    | Crashes | Fatal | Fatal Rate | Serious Injury | Serious Injury Rate | Non-Motorized Fatality | NMF Rate | Non-Motorized Serious Injury | NMSI Rate |
|-----------|---------|-------|------------|----------------|---------------------|------------------------|----------|------------------------------|-----------|
| Fairfield | 14,073  | 70    | 0.50%      | 448            | 3.18%               | 7                      | 0.05%    | 36                           | 0.26%     |
| Knox      | 5,659   | 36    | 0.64%      | 142            | 2.51%               | 0                      | 0.00%    | 4                            | 0.07%     |
| Madison   | 5,259   | 32    | 0.61%      | 217            | 4.13%               | 2                      | 0.04%    | 21                           | 0.40%     |
| Marion    | 8,045   | 50    | 0.62%      | 208            | 2.59%               | 4                      | 0.05%    | 20                           | 0.25%     |
| Morrow    | 4,445   | 29    | 0.65%      | 137            | 3.08%               | 4                      | 0.09%    | 9                            | 0.20%     |
| Pickaway  | 6,478   | 51    | 0.79%      | 236            | 3.64%               | 4                      | 0.06%    | 12                           | 0.19%     |
| Union     | 6,220   | 26    | 0.42%      | 165            | 2.65%               | 3                      | 0.05%    | 4                            | 0.06%     |
| Total     | 50,179  | 294   | 0.59%      | 1553           | 3.09%               | 24                     | 0.05%    | 106                          | 0.21%     |

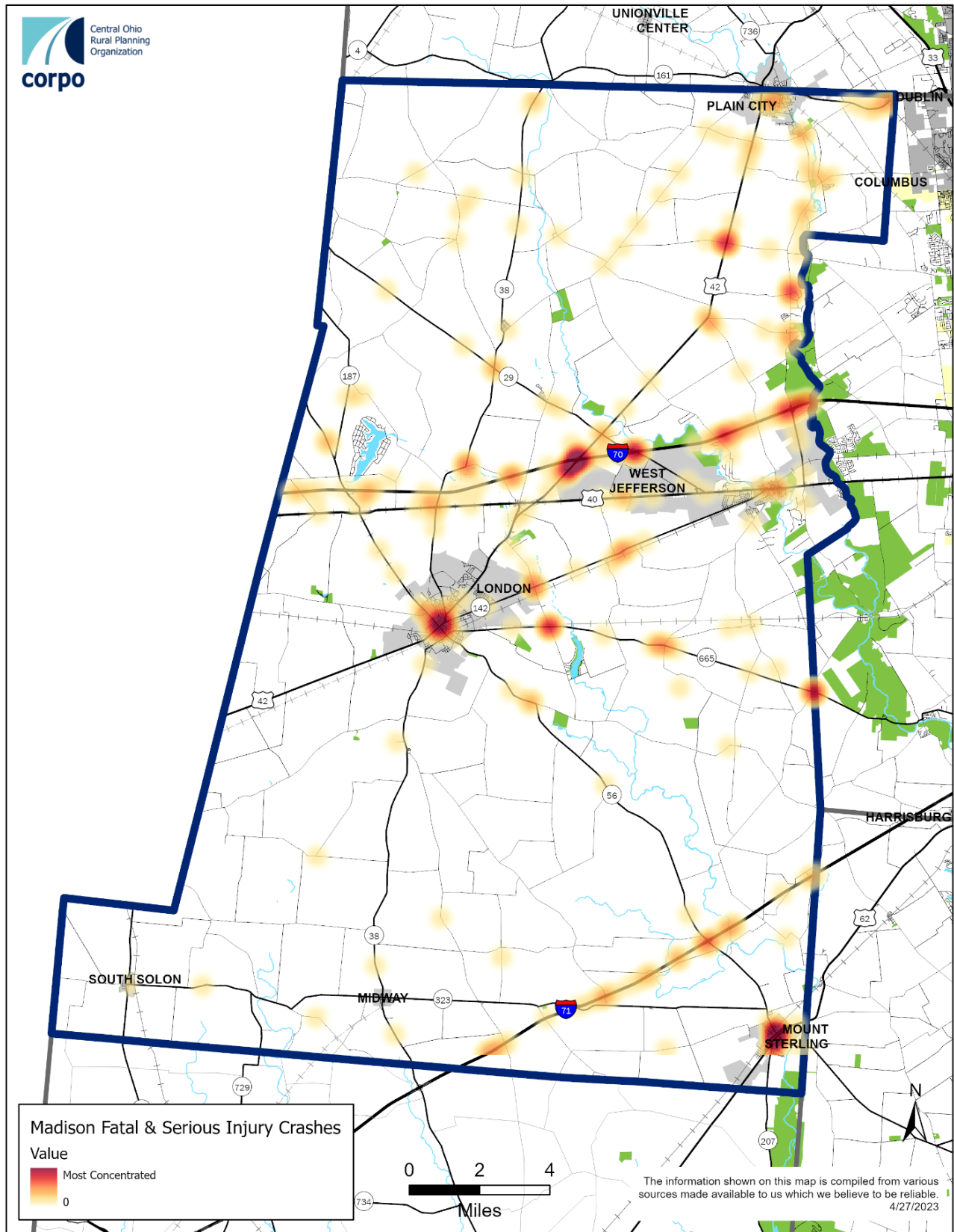
DATA SOURCE: GCAT CRASHES 2017-2021



2.1.2.3.3 MADISON COUNTY, FATAL AND SERIOUS INJURY CRASHES 2017-2021



2.1.2.3.4 MADISON COUNTY, FATAL & SERIOUS INJURY CRASH HEATMAP, 2017-2021



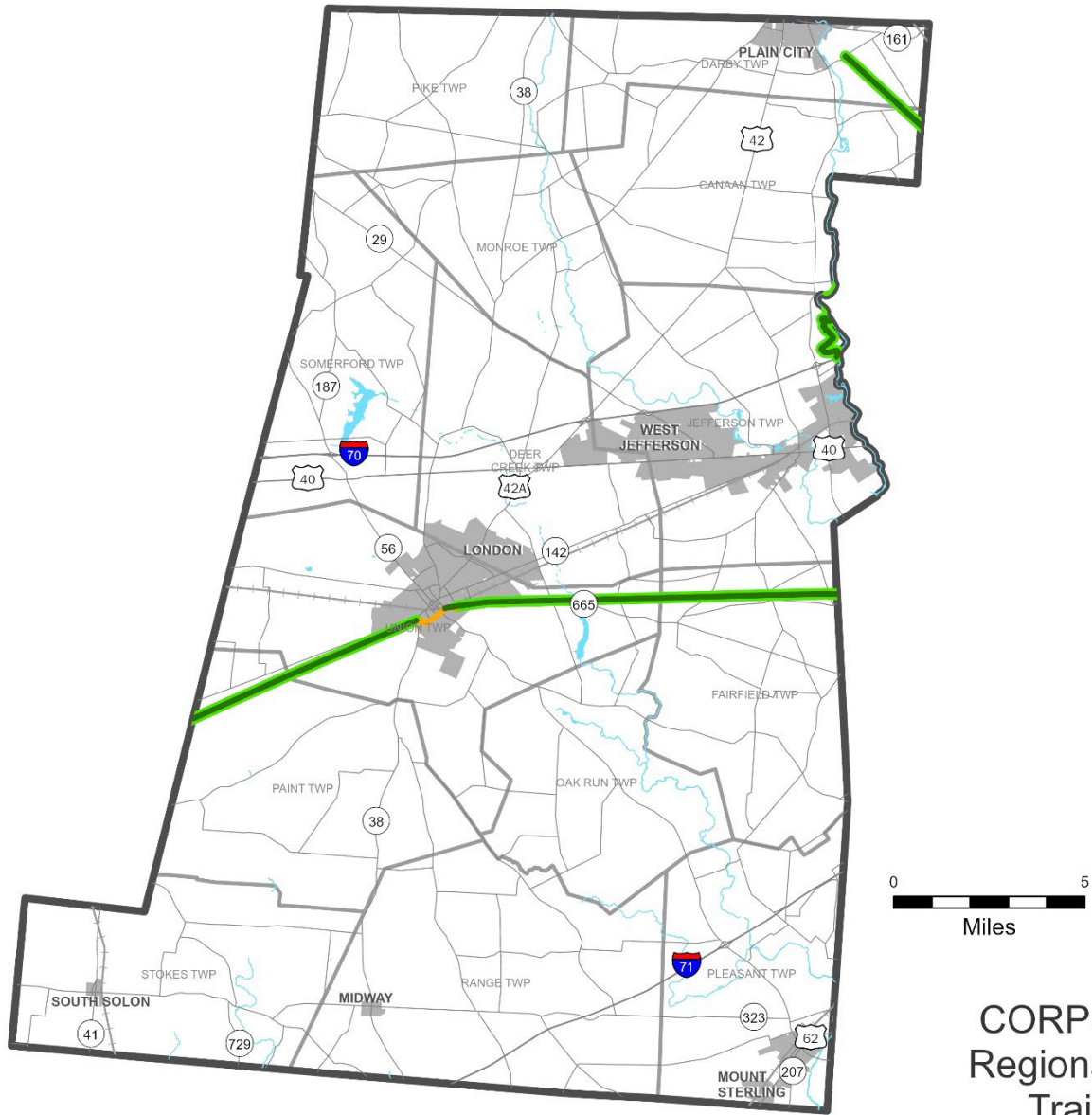
2.3. Goal 3- Accessibility and mobility options for all users

| Related Objectives   | Guiding Questions  |
|--|--|
| <ul style="list-style-type: none"> <li>• Increase mobility options to improve accessibility for all population groups.</li> <li>• Expand bicycle and pedestrian networks.</li> </ul> | <ul style="list-style-type: none"> <li>• <i>Where are there gaps in the current bike/pedestrian network?</i></li> <li>• <i>Are the mobility options available meeting the needs of populations with transportation barriers such as carless households, veterans, older adults, and people with disabilities? What modifications/expansions are required to meet their mobility needs?</i></li> <li>• <i>Where is your county likely to experience growth between now and 2050 that would be good to target for expansion of the bike/pedestrian network?</i></li> </ul> |

2.3.1. Related Existing Conditions

The following maps and links provide information on current bicycle and pedestrian infrastructure and transit services in Madison County.

# MADISON COUNTY REGIONAL TRAILS



**CORPO**  
Regional  
Trails

**Madison County**



- Bicycle Lane
- Multi-use Path
- Paved Shoulder
- Signed Bicycle Route
- Existing COG
- Township Boundary

The information shown on this map is compiled from various sources available to us which we believe to be reliable.  
N:\ArcGIS\CORE\RTPO\CORPO Trails by Type.aprx  
8/16/2023

#### 2.1.2.4 REGIONAL MOBILITY PLAN

The Regional Mobility Plan identifies local and regional transportation needs of people with disabilities, older adults, and those with lower incomes. MORPC worked with nine Central Ohio counties to develop this transit coordinated plan for the ODOT Human Services Transportation Coordination Region 6. A link to the full plan is included below. Information on **Madison County** transit services, mobility needs, goals, and strategies are included in the plan, **pages 108-115**.

- [Click here](#) to see the Regional Mobility Plan

2.4. Goal 4- An integrated, connected, and coordinated transportation system

| Related Objectives   | Guiding Questions   |
|--|---|
| <ul style="list-style-type: none"> <li>• Better connect CORPO communities with each other</li> <li>• Provide transportation facilities that enhance the transition between rural, urban, and other adjacent areas.</li> <li>• Improve and expand modal connection locations.</li> <li>• Increase outreach, coordination and collaboration among local governments, area residents, businesses and other community groups and organizations.</li> </ul> | <ul style="list-style-type: none"> <li>• <i>What gaps exist in the transportation network between your county and the region?</i></li> <li>• <i>Where are corridors or connections between your community and the region likely to experience increased pressure due to population and job growth in your area and/or adjacent areas before 2050? What improvements might be needed to accommodate or alleviate those pressures?</i></li> </ul> |

2.1.3 2.4.1 Related Existing Conditions, Trends, and Projections

[Click here](#) to be taken back to the households and jobs projections.

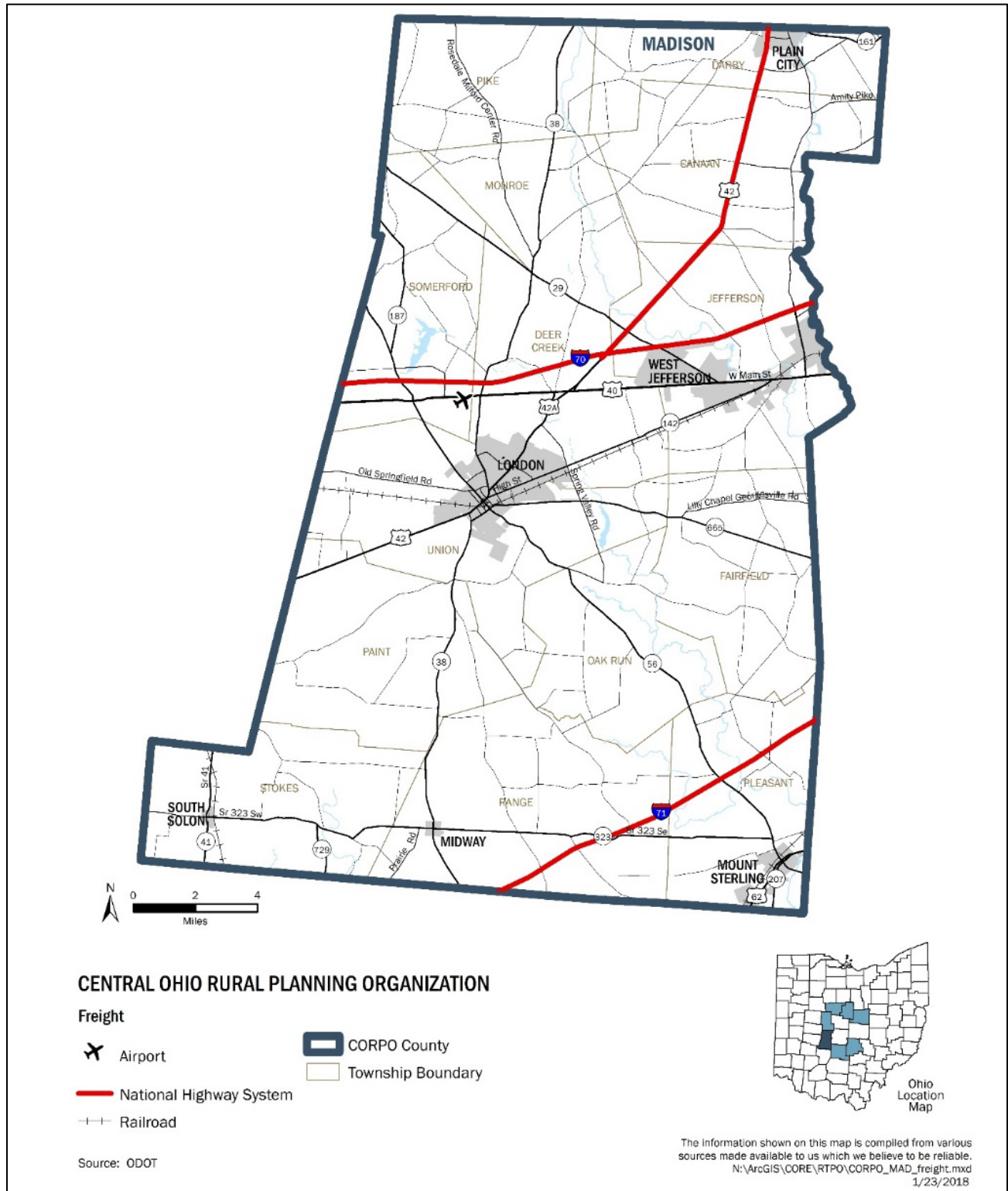
2.5. *Goal 5-* A transportation system that supports a collaborative and focused approach to achieve economic vitality

| Related Objectives  | Guiding Questions  |
|---|--|
| <ul style="list-style-type: none"> <li>• Improve strategic freight related facilities (e.g., highway, rail, intermodal, etc.).</li> <li>• Increase access to employment areas and sites.</li> <li>• Develop multipurpose corridors (e.g., utilities, water, broadband, fiber, etc.).</li> </ul> | <ul style="list-style-type: none"> <li>• <i>What gaps exist in the freight network in your county?</i></li> <li>• <i>Where does the freight network need improvement to maintain or advance efficiency and support industry?</i></li> <li>• <i>What areas should be/are being strategically targeted as multi-purpose corridors? What transportation infrastructure would be needed to support those multi-purpose corridors?</i></li> </ul> |

2.1.4 2.5.1 *Related Existing Conditions, Trends, and Projections*

[Click here](#) to go to be taken back to the household and jobs projections.

# Madison County Freight Network





2.6. *Goal 6-* Preserve and enhance environmental resources and sustainability through the transportation system

| Related Objectives  | Guiding Questions   |
|---|---|
| <ul style="list-style-type: none"> <li>• Increase use of non-single occupant vehicles (local transit, intercity transit, ridesharing, biking, walking).</li> <li>• Provide transportation facilities consistent with land use, environmental and sustainability plans.</li> </ul> | <ul style="list-style-type: none"> <li>• <i>What gaps exist in the transportation network that can be addressed to encourage modes other than single-occupant vehicles? (i.e., gaps in sidewalks, bike lanes, or transit routes)</i></li> <li>• <i>Where are environmentally sensitive areas that should be considered when planning future transportation projects? How can the multi-modal transportation network be planned to preserve or sustain the environmentally sensitive areas?</i></li> </ul> |

2.1.5 2.6.1 Related Existing Conditions

[Click here](#) to be taken back to the map of the current bike and pedestrian network.

### 3. Reviewing & Updating Transportation Needs

In addition to identifying and submitting new transportation needs, it’s also important to revisit the projects included in the 2018-2040 CTP and update and re-prioritize them as needed.

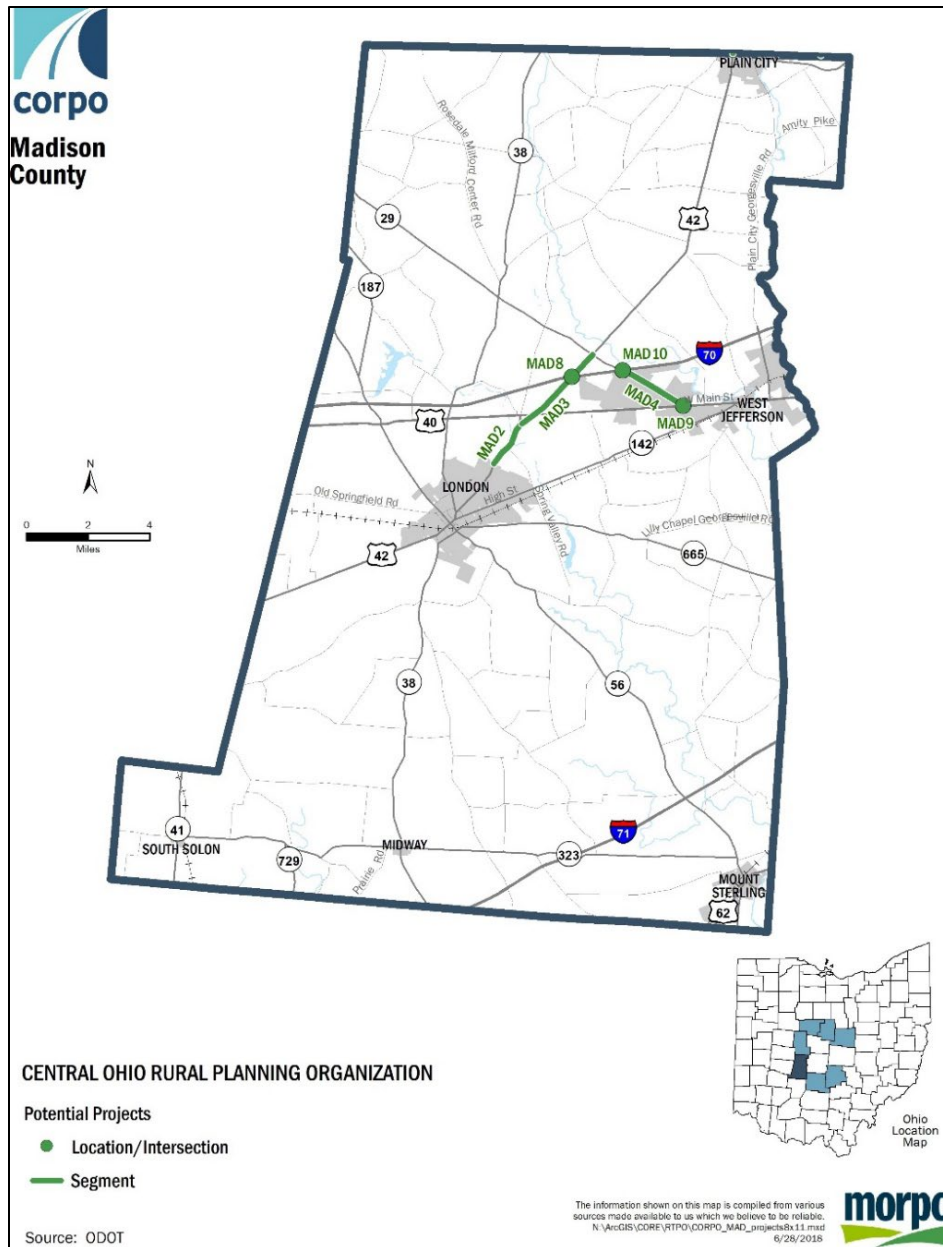
The excel workbook provided with this packet also provides space to revisit the projects included for Madison County in the 2018-2040 CTP and add or update information for each, and then re-prioritize based on updated information and added projects. TIP projects are for reference only and will be included in the 2023-2050 CTP as appropriate.

#### 3.1. 2018-2040 CORPO Transportation Plan and SFY 24-27 Transportation Improvement Program Projects

The maps on the following pages show the projects identified for Madison County in the 2024-2027 TIP and the 2018-2040 CTP.

### 3.1.1. 2018-2040 CTP Madison County Identified Projects

Below is the map of projects identified in Madison County in the 2018-2040 CTP.



Below is a listing of projects identified in Madison County in the 2018-2040 CTP.

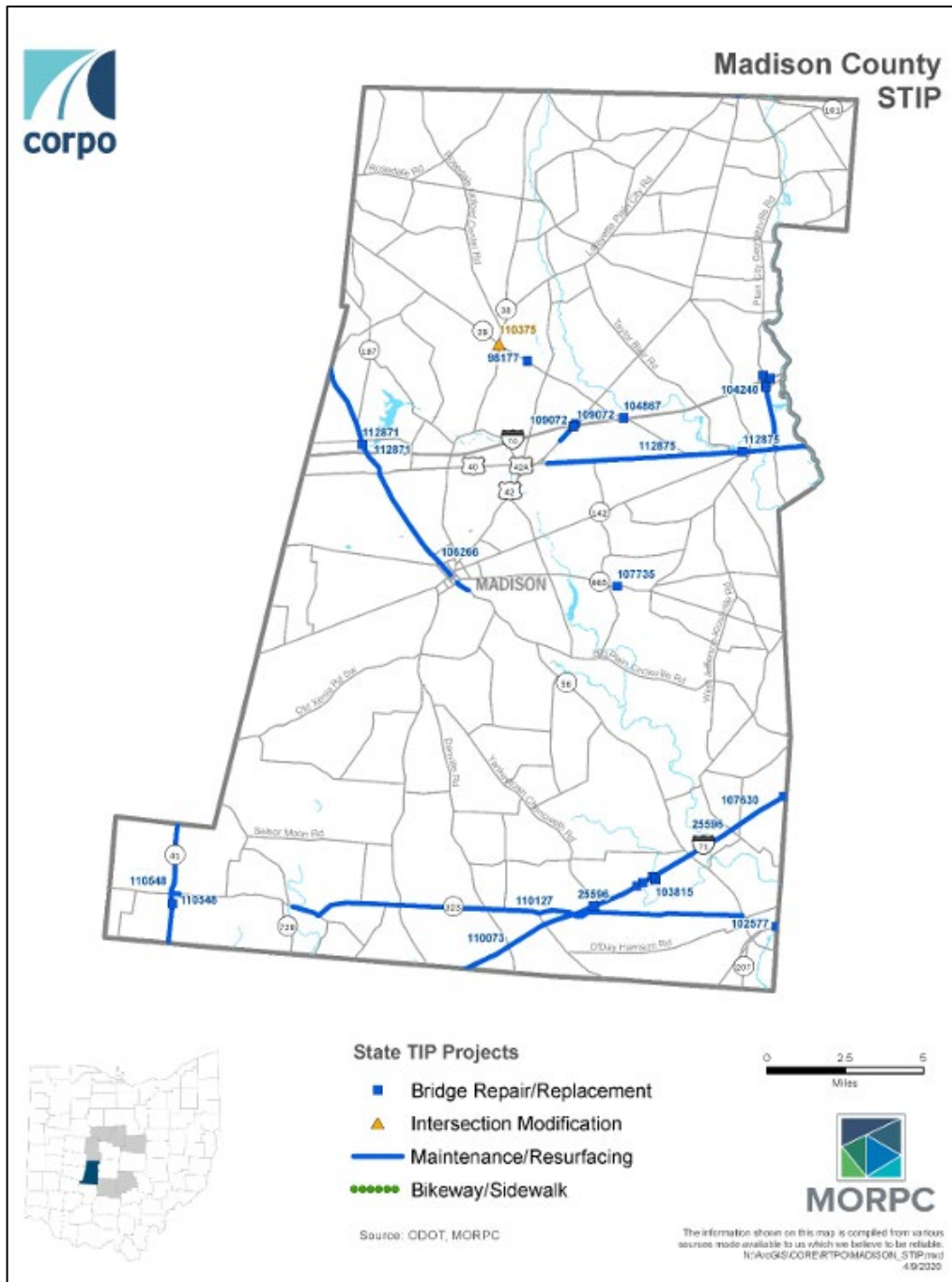
| 2018 - 2040 CORPO Transportation Plan Project Listing |        |  |                 |
|---|--------|--|-----------------|
| Mapped Projects - Sorted by County                    |        |  |                 |
| County  | ID     | Project Description  | Cost (Millions) |
| Madison   | MAD 2  | US 42 from CR 135 (Betty Wilson Road) to CR 104 (Simpson Road); Minor widening | \$10 - \$15     |
| Madison   | MAD 3  | US 42 from CR104 (Simpson Rd) to SR 29; Access Management                      | \$2 - \$3       |
| Madison   | MAD 4  | SR 29 from I-70 to north of Main St; Major widening                            | \$13 - \$16     |
| Madison   | MAD 8  | US 42 / I-70 Expansion; Interchange modification                               | \$14 - \$16     |
| Madison   | MAD 9  | US 29 / US 40 Realignment; Intersection modification                           | \$23            |
| Madison   | MAD 10 | ODOT Study of SR 29 / I-70 Interchange   | TBD             |

### 3.1.2. 2024-2027 Madison County TIP Projects

[Click here](#) to access the CORPO 2024-2027 TIP document.

[Click here](#) to access Appendix 3: County SY 2024-2027 TIP Summaries. The **Madison County** summary is **pages 23-33**.

Below is a map and summary of projects in Madison County included in the 2024-2027 COPRO TIP.



| TIP ID | PID    | Primary Project Type        | AQ | Agency         | CRS                | Project Desc   | LENGTH | Total Cost     |
|--------|--------|-----------------------------|----|----------------|--------------------|--|--------|----------------|
| 94     | 115654 | Bridge Preservation         | E  | Madison County | MAD-CR133-0.15     | Cheseldine Rd at Deer Creek, Bridge Preservation, 0 lanes, Structure Rehabilitation Madison CR 133A (Cheseldine Rd) over Deer Creek  | 0      | \$312,000.00   |
| 95     | 115657 | Bridge Preservation         | E  | Madison County | MAD-CR004-3.05     | Big Plain - Circleville Rd at Deer Creek, Bridge Preservation, 0 lanes, Structure Replacement Madison CR 4 (Big Plain - Circleville Rd) over Deer Creek  | 0      | \$1,425,000.00 |
| 96     | 115660 | Bridge Preservation         | E  | Madison County | MAD-CR010-0.43     | Middle Pike at Little Darby Creek, Bridge Preservation, 0 lanes, Structure Rehabilitation of Madison CR 10 (Middle Pike) SFN 4930207 over Little Darby Creek   | 0      | \$1,449,000.00 |
| 106    | 116111 | Traffic Control (Safety)    | E  | Madison County | MAD-VARCR GR-FY26  | MAD-VAR CR GR-FY26 at Various routes throughout Madison County, Traffic Control (Safety), 0 lanes, CEAO safety funded (HSIP) project to upgrade existing guardrail on Various Madison County Roads. Local-let and administered by Madison County Engineer's off  | 0      | \$387,428.00   |
| 108    | 116175 | Traffic Control Maintenance | E  | Madison County | MAD-VARCR RPM-FY26 | MAD-VAR CR RPM-FY26 at Various county roads throughout Madison County., Traffic Control Maintenance, 0 lanes, CEAO safety funded (HSIP) project to install and replace raised pavement markers on various county roads throughout Madison County.Local-let proj  | 0      | \$300,000.00   |
| 115    | 116876 | Intersection Modification   | E  | Madison County | MAD-CR007-9.85     | MAD-CR7-9.85 at CR30/CR34, Intersection Modification, 0 lanes, Construct a roundabout at the intersection of CR7 (Plain City-Georgesville Road)/CR30 (Converse Huff Road)/CR 34 (Cemetery Pike).CEAO HSP funds in CONS phase. Local-let by Madison County Engine | 0      | \$104,000.00   |

