



ACTIVE TRANSPORTATION IN GROVE CITY

December 12, 2023

Kim Shields
Community Development Manager

Agenda



- Existing Conditions & Recent Improvements
- Identifying Key Connections
 - Locally & Regionally
- Making Active Transportation More Accessible
- Looking Ahead...

Existing Conditions



More than 38 miles of bikeway facilities.

- Off-Street & On- Street



On-Street



Off-Street



Road Improvements



Southwest Blvd.



2009



2021



Meadow Grove



2009



2019



New Developments



- Partnerships with the development community – plans reviewed to ensure trails are established through new projects and connect to trail network
- City fills in with key connections

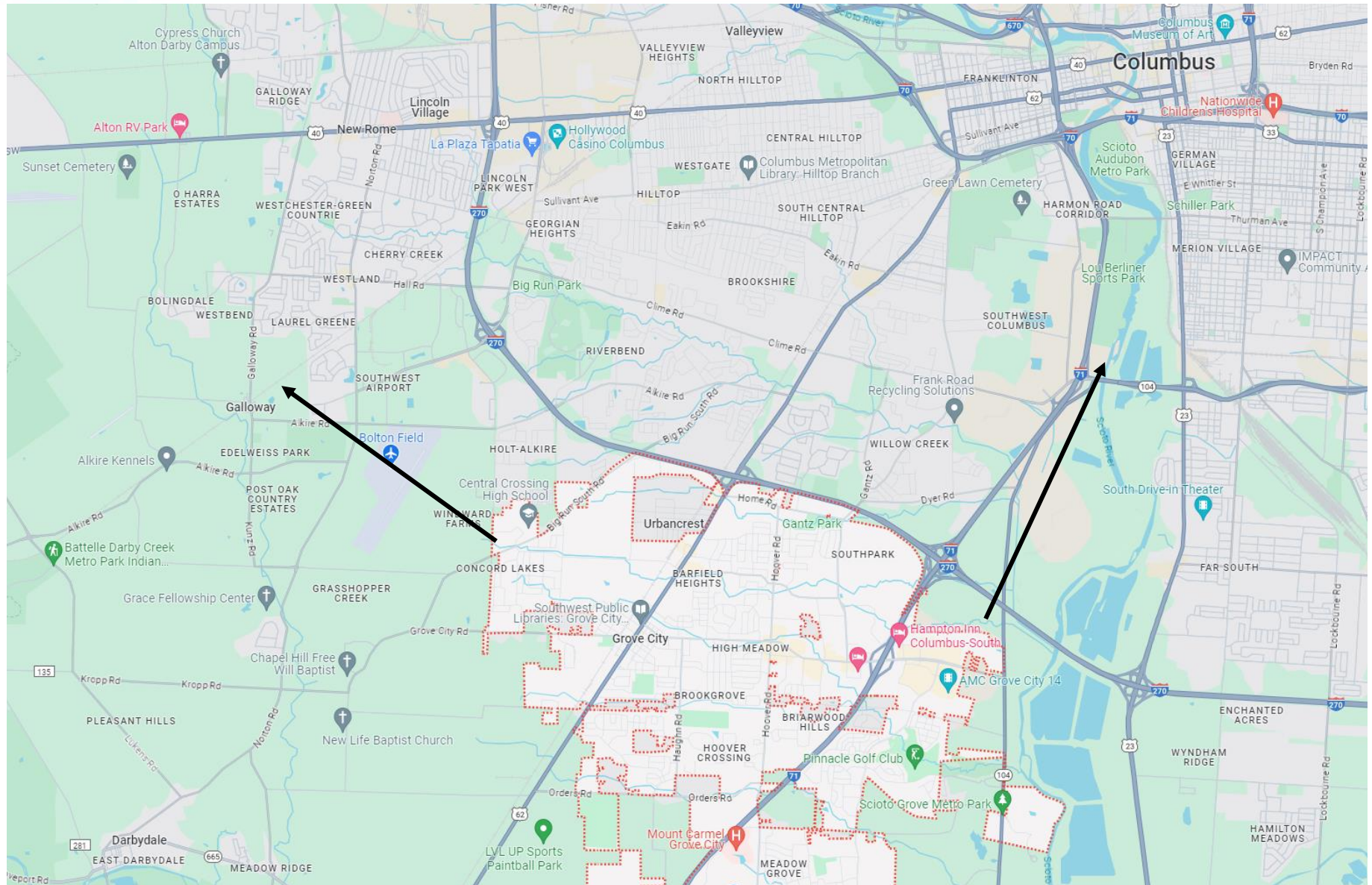
Prioritizing



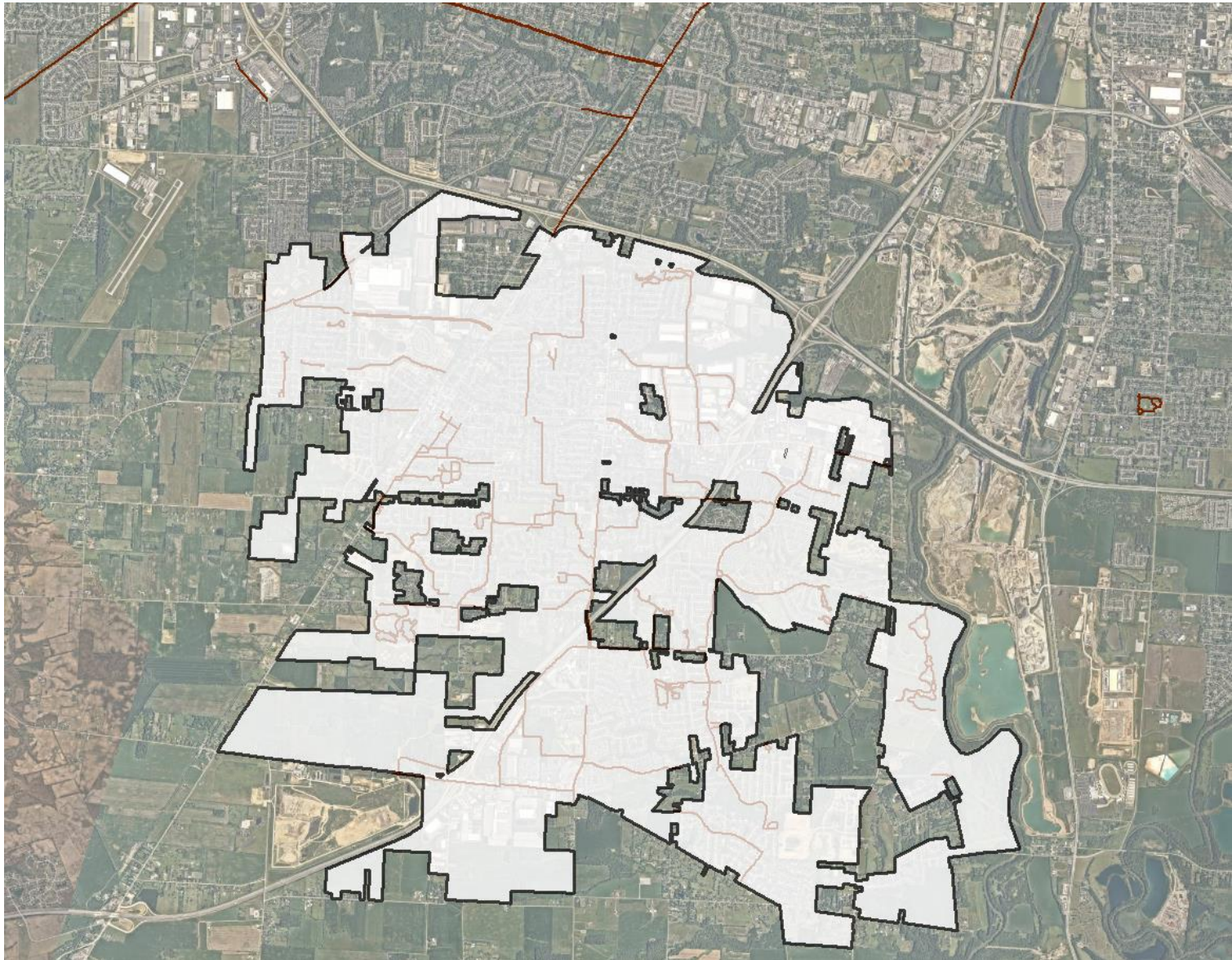
How do we prioritize?

- Many connections require interjurisdictional projects
- Offshoot from MORPC TA
 - Identify which connections will result in the most benefit (type of facility, number of residents or employers served)
- Bicycle Transportation Task Force – created in 2023

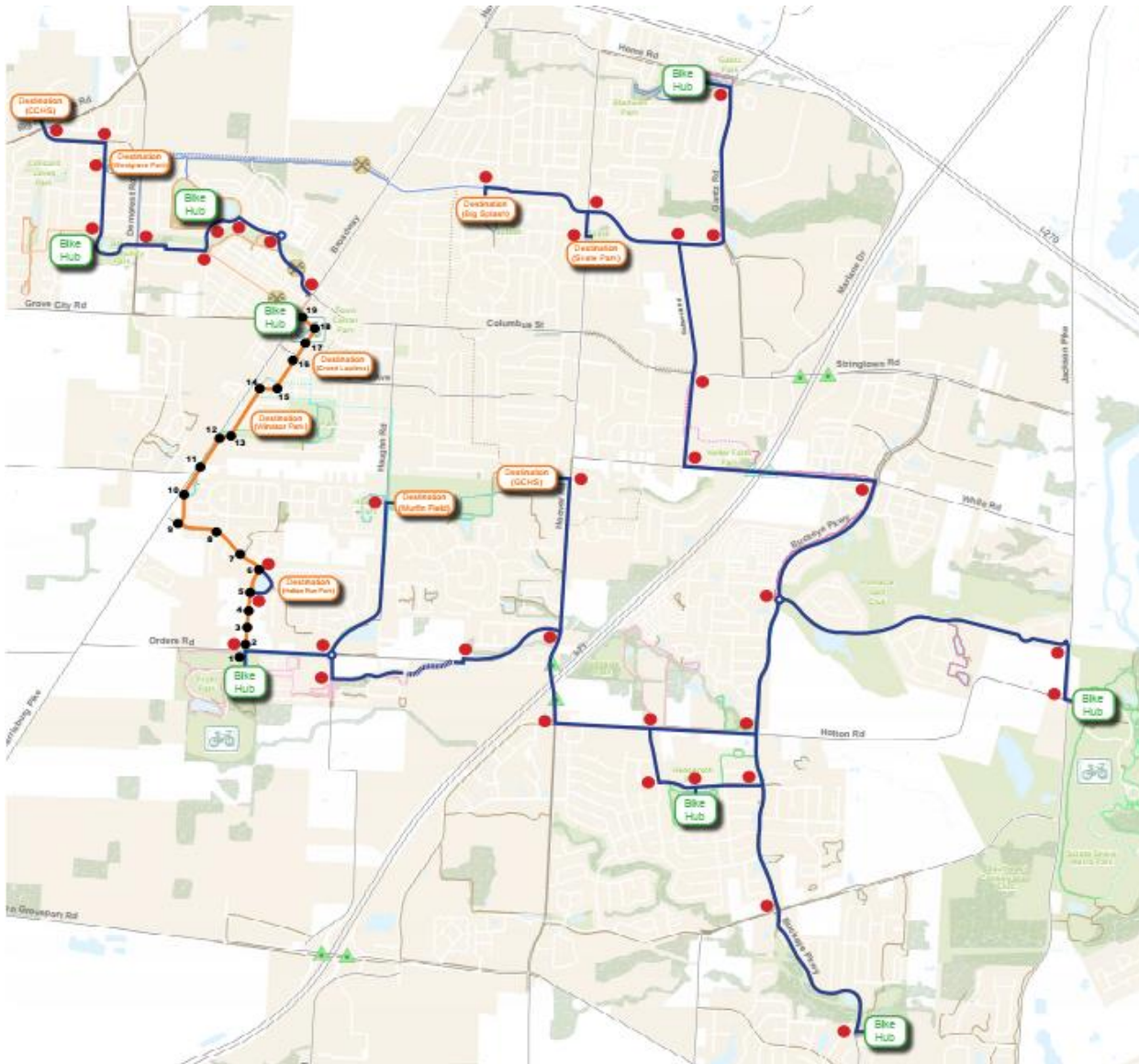
Regional Connections



Regional Connections



More Digestible Network



Hub & Spoke Model

Bike Trail map shows all

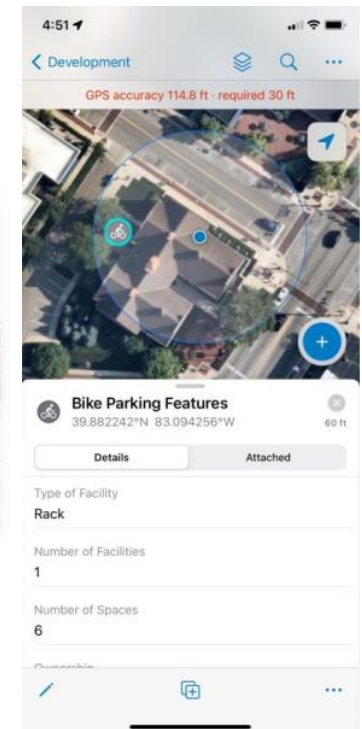
- Spoke brochures show individual routes and the experiences along the way

HUBS: Consistent signage, amenities (benches, repair stations, bike racks)

SPOKES: Trails connecting the Hubs

Great Momentum for Active Transportation:

- Bicycle Transportation Task Force
- Bike Bus (3 schools in the Spring, 1 in the Fall)
- Bike with Mayor Ike – EcoFest
- Walk Audit - MORPC
- Heritage Cycles rides
- Bike Counters to track trail activity (MORPC)
- Bicycle Facilities Inventory (Esri web app)
- Roadway Improvements (No Turn on Red in Town Center)



2024 -

- Bicycle Friendly Community application
- Webpage all about Active Transportation
 - Public awareness – ROW is for everyone, not just cars



THANK YOU!

QUESTIONS?

Kim Shields
Community Development Manager

kshields@grovecityohio.gov
614-277-3007