

Link^{US}
Moving our region. **Together.**

LinkUS Update

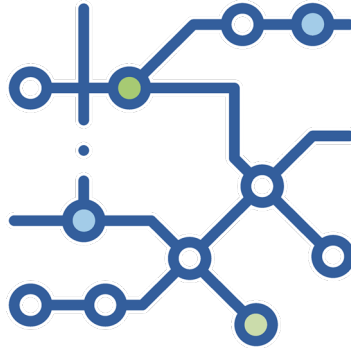
Maria Schaper, MORPC



LINKUS OUTCOMES



**HISTORIC
MOBILITY
INVESTMENTS**

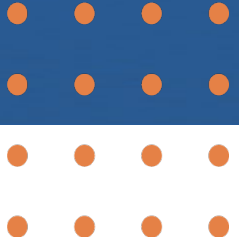


**AFFORDABLE, WALKABLE,
CONNECTED COMMUNITIES**



**INCREASED
OPPORTUNITIES
FOR ALL**

HOW?



**FASTER, MORE
RELIABLE PUBLIC
TRANSPORTATION**

**SAFER AND EXPANDED BIKE
AND PEDESTRIAN PATHS**

**WALKABLE
COMMUNITIES MORE
AFFORDABLE ACCESS
TO WORK, HOME, AND
ENTERTAINMENT**

A FUTURE WITH LINKUS





HOW LINKUS TRANSFORMS US



Premium Rapid Transit with
Faster, More Reliable Public
Transportation



5
New Rapid
Transit Corridors

&

45%
More Service
Hours

RAPID TRANSIT

IS HIGH CAPACITY WITH
PREMIUM FEATURES
AND AMENITIES



Level Boarding and
Multi-Door Boarding



Off-Board
Fare Collection



Dedicated
Right-of-Way



Signal Priority and
Intersection Control



Modern and Branded
Vehicle Designs



Frequency
and Capacity



Enhanced Stations



Clean Energy

To learn more about the key elements of premium transit, go to www.linkuscolumbus.com and check out the LinkUS Framework strategy.

WEST BROAD CORRIDOR

ACTIVITY CENTERS / TRIP GENERATORS

1. OhioHealth Doctor's Hospital
2. Hollywood Casino
3. Ohio Department of Transportation
4. Ohio Department of Public Safety
5. Mount Carmel Hospital
6. Center of Science and Industry (COSI)
7. Scioto Mile
8. Palace Theatre
9. Ohio Statehouse
10. Capital University Law School
11. OhioHealth Grant Medical System
12. Columbus Metropolitan Library
13. Columbus College of Art and Design
14. Columbus Museum of Art





WEST BROAD CORRIDOR

STATS AT A GLANCE

5

The number of corridor miles that will operate on a dedicated guideway.

95,000

The number of jobs that the West Broad Street BRT Corridor can connect people to by 2040.

17

The number of stations planned along the route. The exact placement of these facilities will be coordinated with the local community during the design phase.

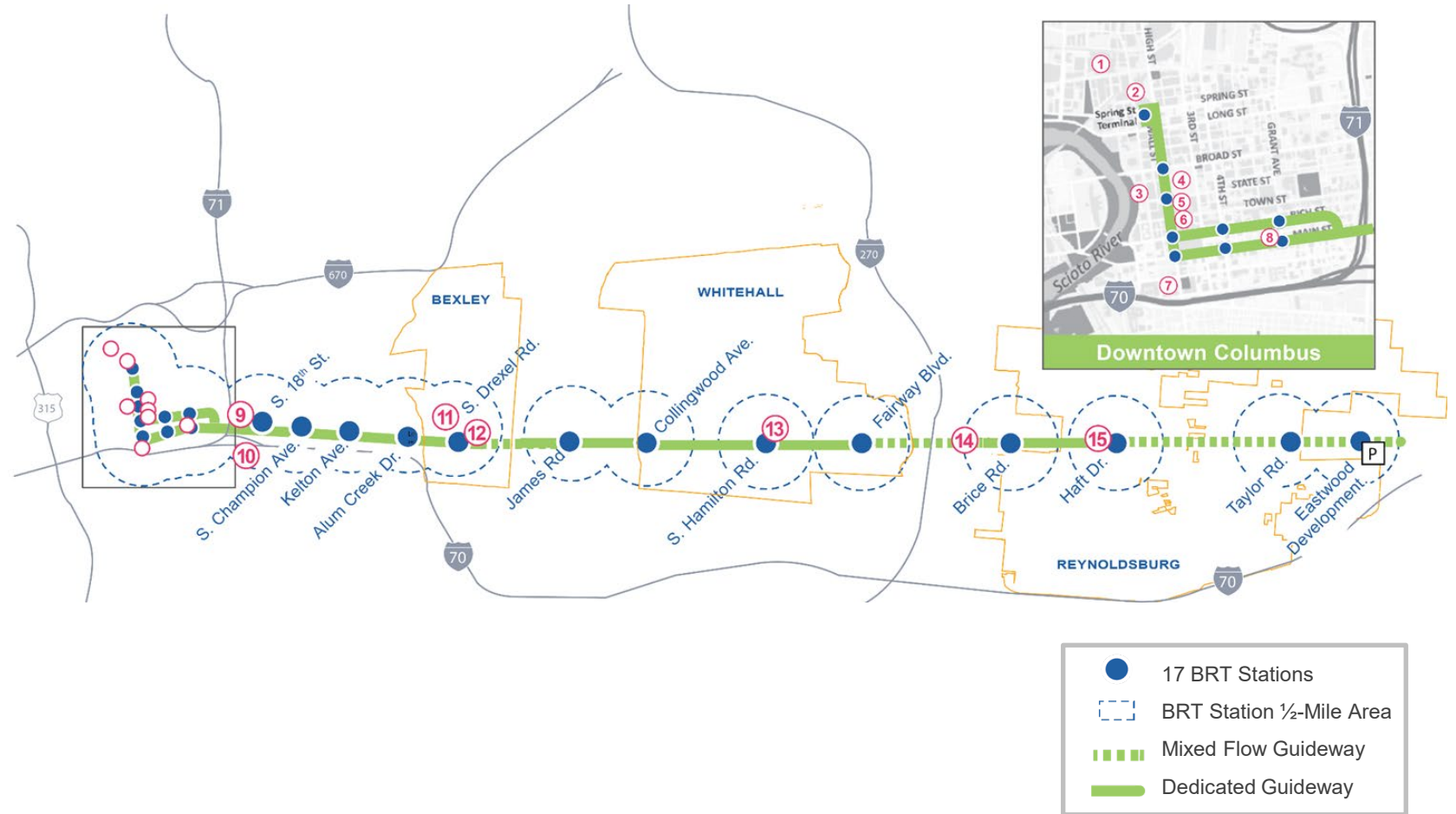
76

The percentage of residents on West Broad Street who live in an area of persistent poverty. BRT can help to connect the community to jobs, healthcare, education and other resources.

EAST MAIN CORRIDOR

ACTIVITY CENTERS / TRIP GENERATORS

1. Nationwide Arena
2. Three Nationwide Plaza
3. Scioto Mile
4. Ohio Statehouse
5. Ohio Theatre
6. Columbus Commons
7. Franklin County Courthouse
8. Franklin University
9. Columbus Public Health
10. Nationwide Children's Hospital
11. Downtown Bexley
12. Capital University
13. Great Eastern Shopping Center
14. Main 270 Shopping Center
15. Reynoldsburg Shopping Center





EAST MAIN CORRIDOR

STATS AT A GLANCE

8

The number of miles that BRT will operate in on a dedicated guideway, switching to mixed traffic in Bexley and east of Haft Drive in Reynoldsburg.

100,000

The number of jobs and economic opportunities BRT can connect people to within the half-mile radius of the BRT stations.

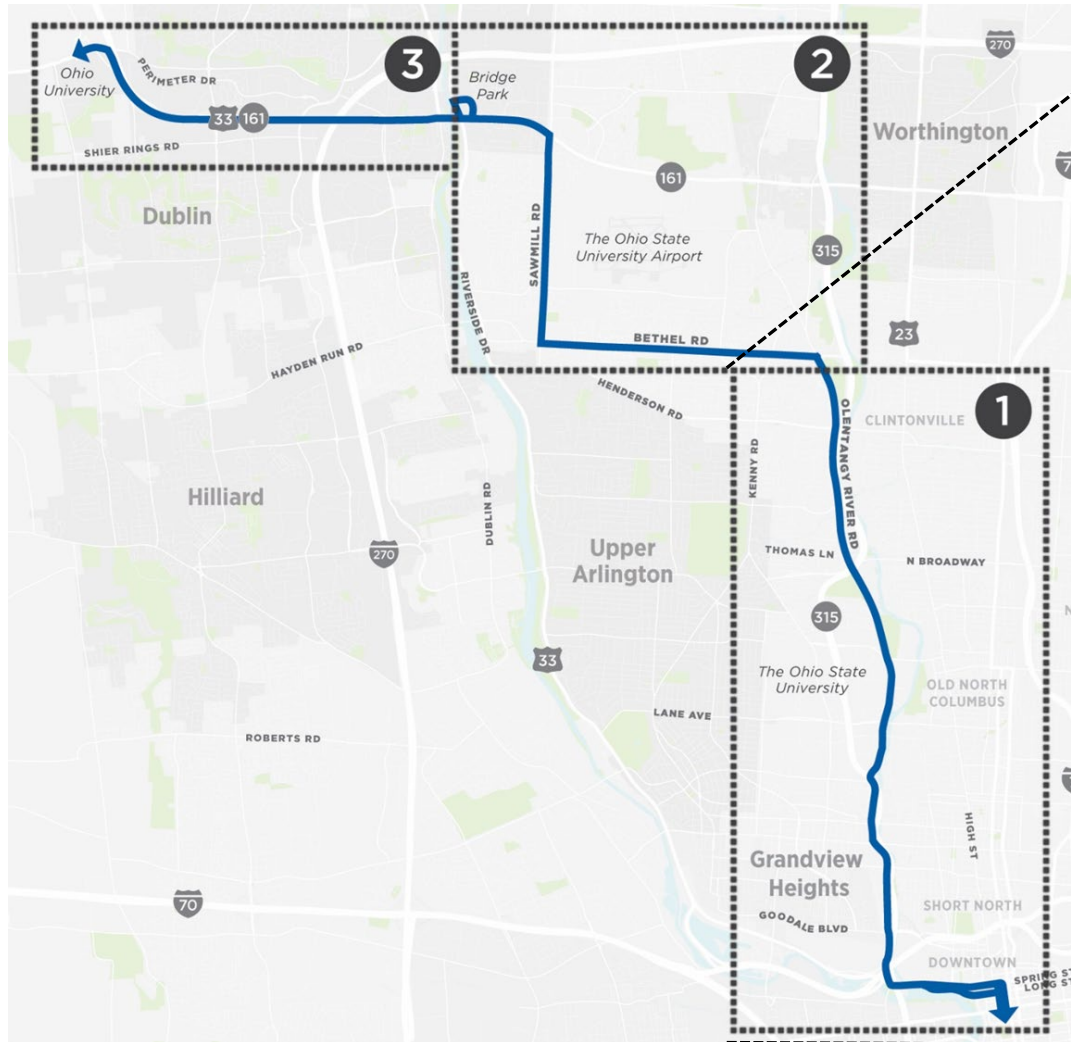
19

The number of stations that are planned along the route. The exact placement of these facilities will be coordinated with the local community during the design phase.

64

The percentage of East Main Street residents who live in an area of persistent poverty. BRT aims to connect the community to jobs, healthcare, education and other resources.

NORTHWEST BRT CORRIDOR





NORTHWEST CORRIDOR

STATS AT A GLANCE

5

of Columbus' largest sports and
entertainment venues

3

of Central Ohio's largest
employment hubs

30%

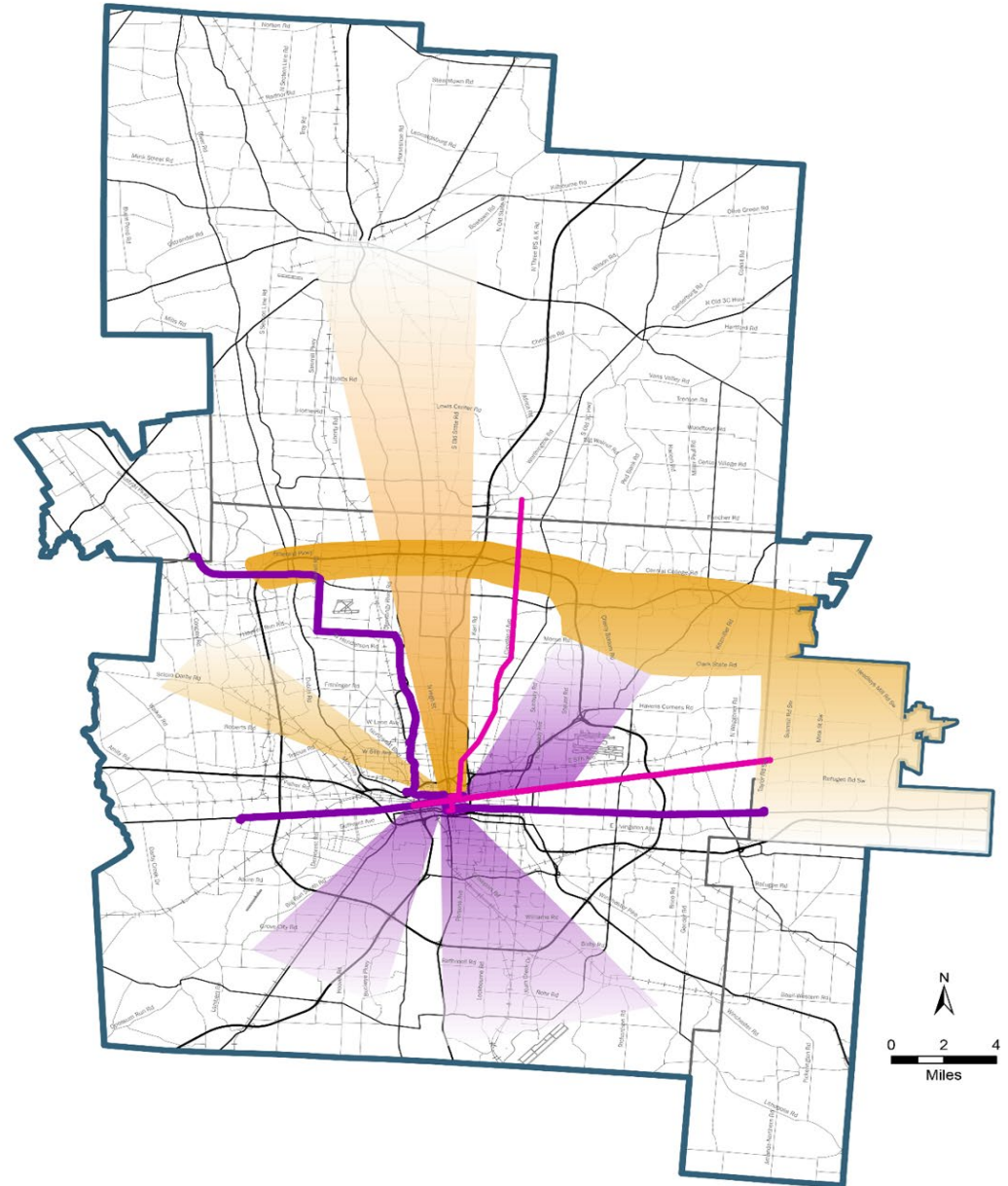
of all jobs in Franklin County

50%

population growth by 2040

2024-2050 DRAFT MTP

- Planned BRT Corridors
- Premium Transit Improvements
- Future Rapid Transit Corridors
- Corridors to Study





HOW LINKUS TRANSFORMS US



**Safer and
Expanded Bike and
Pedestrian Paths**



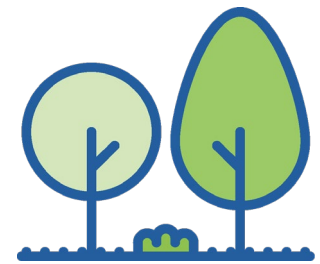
**500+
Miles**



Bikeways



Sidewalks



Greenways

TRANSIT SUPPORTIVE INFRASTRUCTURE

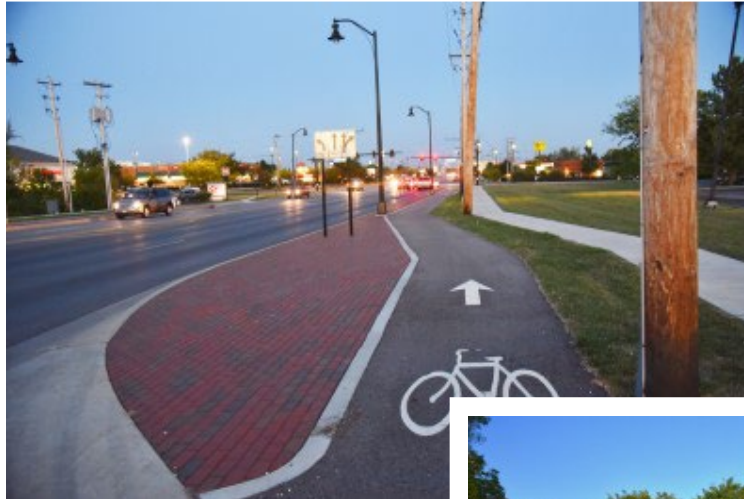
27.5%

Dedicated of the New 0.5% Sales
Tax Collection



~\$60M

Estimated Annual Collections
Dedicated to Transit Supportive
Infrastructure





TSI COMMITTEES



Technical Working Groups (TWG)

- Direct representation for each jurisdiction
- Technical staff (planners, engineers, financial managers)
- Identify and prioritize TSI projects within their geographic quadrant

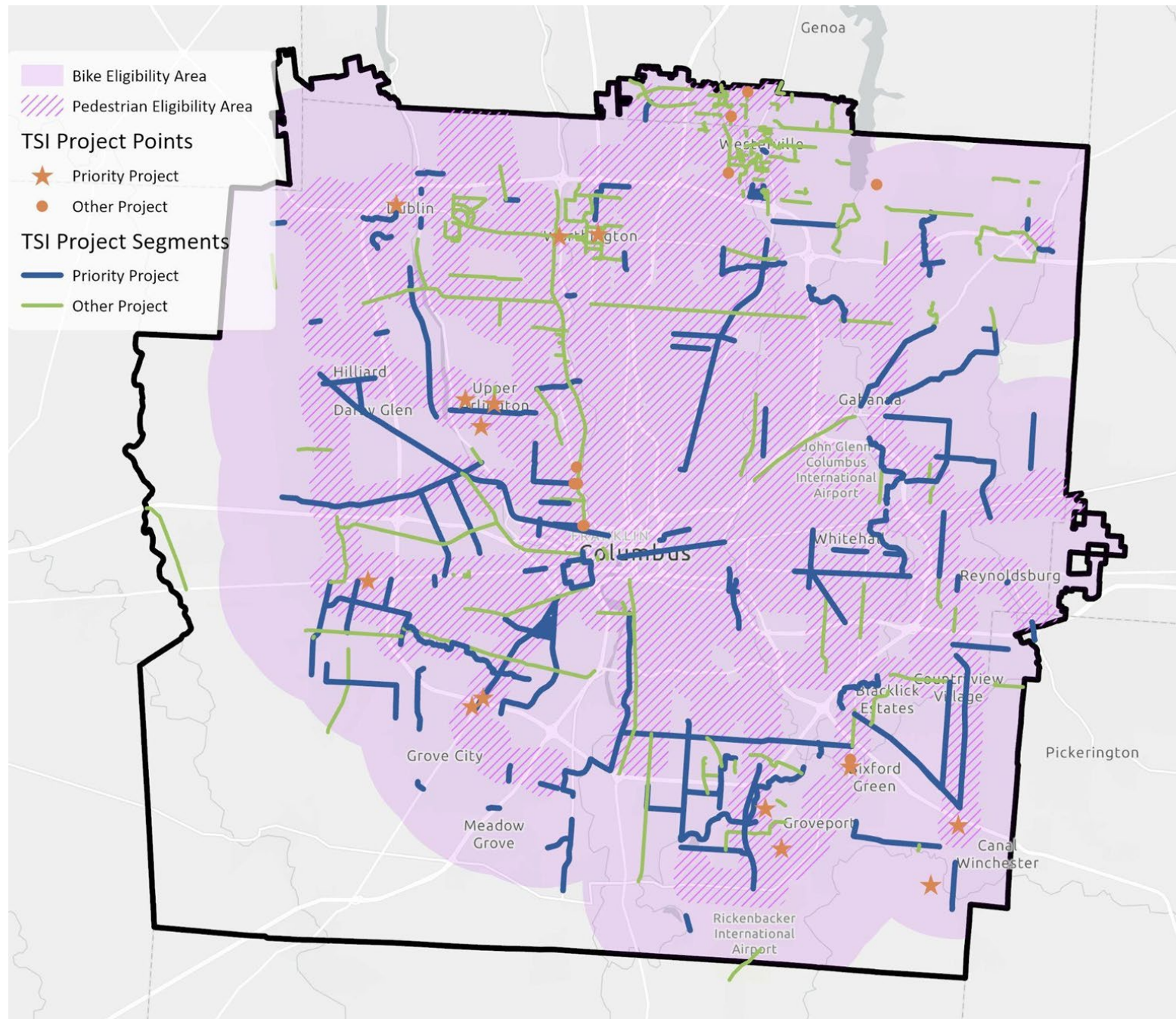
Technical Coordinating Committee (TCC)

- Subset of TWG members
- Build consensus between quadrants and recommend regional CIB/CIP
- Maintain pipeline of projects for future CIP updates
- Chair and Vice-Chair:
Cindi Fitzpatrick and
Council Person Emily Keeler

Leadership Committee (LC)

- Elected/executive level officials
- Approves bylaws, policies, and procedures
- Review and approve recommended TSI CIB/CIP
- Determine overall programmatic strategy with TCC
- Chair and Vice-Chair:
Megan O'Callaghan and
James Jewell

TSI DRAFT REGIONAL PRIORITIES





TSI ACTION ITEMS

- In 2023, focus was engaging with jurisdictions to design a program to benefit every community.
 - Executed interagency agreements for program management
 - Formalized and convened TSI Committees
 - Drafted program policies
 - Identified TSI project priorities
- In 2024, TSI Committees will focus on:
 - Finalize program policies
 - Develop TSI CIP/Budget
 - Communicate project priorities
 - Collaborate to get priority projects “grant-ready” and maintain pipeline of projects



NEXT STEPS



- Continue transit corridor planning and design
- Development of TSI Capital Improvement Program
- Equitable Transit-Oriented Design (eTOD) Action Plan
- Continue Outreach and Engagement
 - Promote LinkUS community education program
 - Outreach to business and community leaders