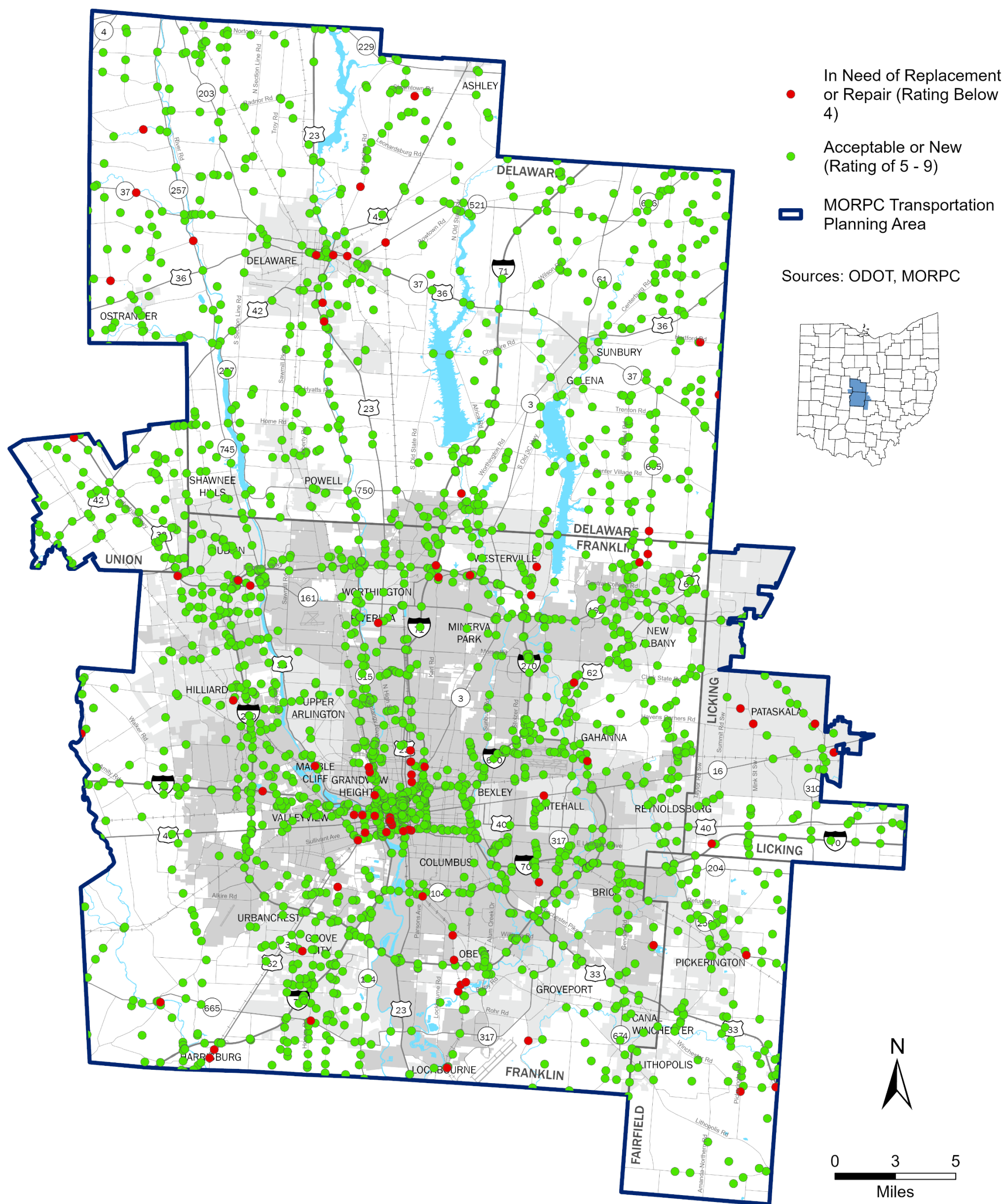
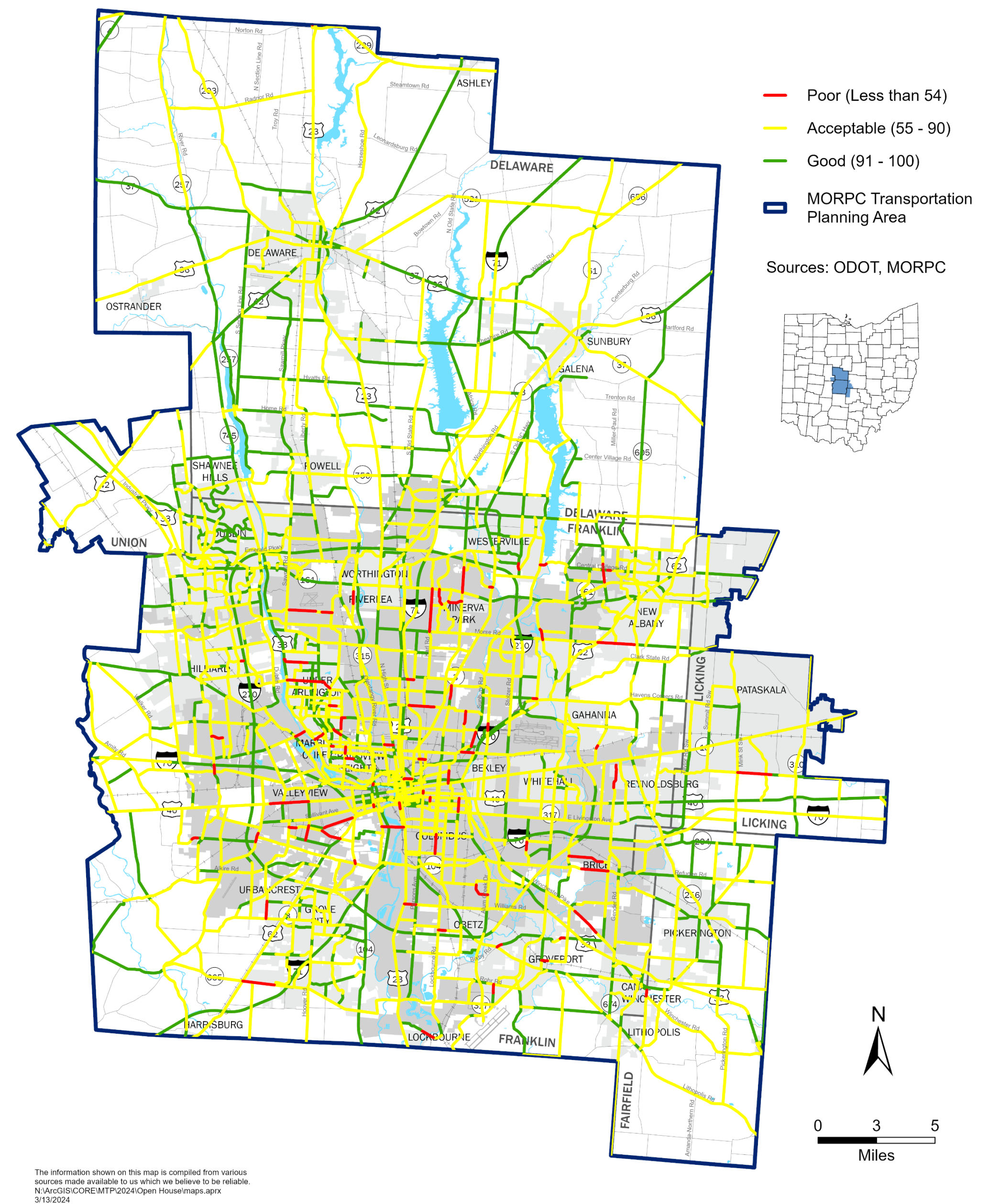


MANAGEMENT STRATEGIES: PRESERVATION

Bridge Condition



Roadway Condition



The information shown on this map is compiled from various sources made available to us which we believe to be reliable. N:\ArcGIS\COORE\MTP\2024\Open House\maps.aprx 3/13/2024

The information shown on this map is compiled from various sources made available to us which we believe to be reliable. N:\ArcGIS\COORE\MTP\2024\Open House\maps.aprx 3/13/2024

OBJECTIVES AND PERFORMANCE MEASURES

Maintain infrastructure in a state of good repair by minimizing the percentage of bridges and pavements in poor condition and maintaining transit fleet of a useful life.

- 2024 Baseline: 60% of interstate, 29% of non-interstate National Highway System (NHS), 33% of federal aid non-NHS system pavement in good condition.

Refer to document or website for complete list of objectives and performance measures.

PRIMARY STRATEGIES

- Repair or replace bridges in poor physical condition
- Repave or reconstruct roads in poor physical condition
- Repave or reconstruct sidewalks and bikeways in poor physical condition
- Replace transit vehicles that are beyond their useful life
- Repair or replace transit facilities in poor physical condition
- Utilize advanced material and techniques to maximize life of transportation system components
- Continue to evolve consistent data collection and analysis procedures to rate the physical condition of the transportation system components

Refer to handout or website for complete list of draft strategies