

2024 - 2050 METROPOLITAN TRANSPORTATION PLAN OPEN HOUSE

March 19, 2024

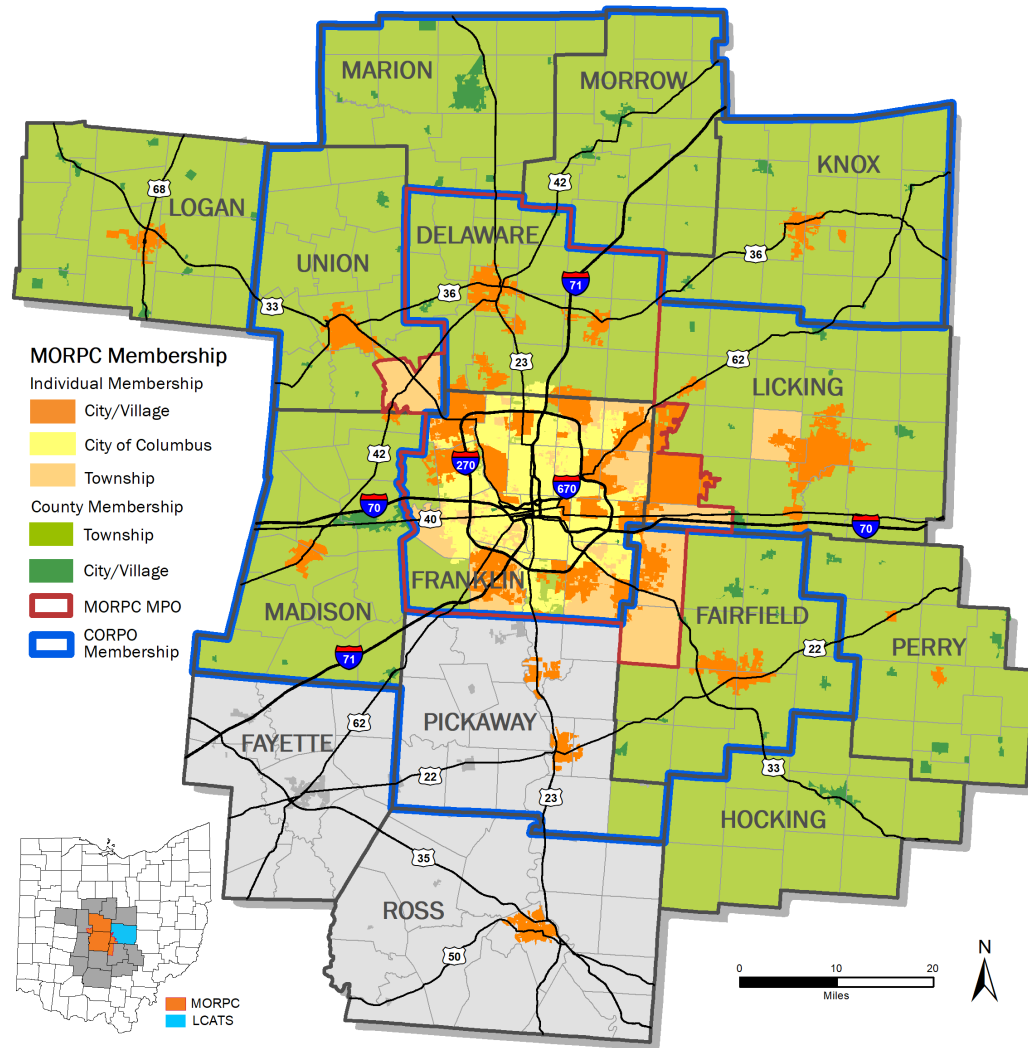
Presentations at 4 p.m. and 5:45 p.m.

www.morpc.org/mtp2050



MID-OHIO REGIONAL
MORPC
PLANNING COMMISSION

MID-OHIO REGIONAL PLANNING COMMISSION



- Regional Council for Columbus, Ohio Region
 - 2.4 million and growing
- Services for 87 Local Governments
 - Rural * Urban * Suburban
- Focus Areas:
 - Transportation & Infrastructure
 - Development Support (EDD)
 - Planning & Sustainability
 - Data, Research & Mapping
 - Residential Services
 - Policy & Grant Development
 - Engagement
- Key Partner to Businesses & Non-Profits



WHAT IS THE METROPOLITAN TRANSPORTATION PLAN (MTP)?

- Identifies transportation strategies and projects over 20+ years within expected financial resources
- Formal document submitted to ODOT and USDOT every 4 years

WHY IS THE MTP IMPORTANT?

- Central Ohio is growing
- Transportation projects must be on the MTP to be eligible for federal funding





T-15-22

By guiding investment in transportation and mobility infrastructure and services in Central Ohio, the MTP identifies strategies to advance the following six goals:



Create sustainable neighborhoods to improve all residents' quality of life.



Increase regional collaboration and employ innovative transportation solutions to maximize the return on public expenditures.



Position Central Ohio to attract and retain economic opportunity to prosper as a region and compete globally.



Provide transportation and mobility options to benefit the health, safety, and welfare of all people.



Protect natural resources and mitigate infrastructure vulnerabilities to maintain a healthy ecosystem and community.



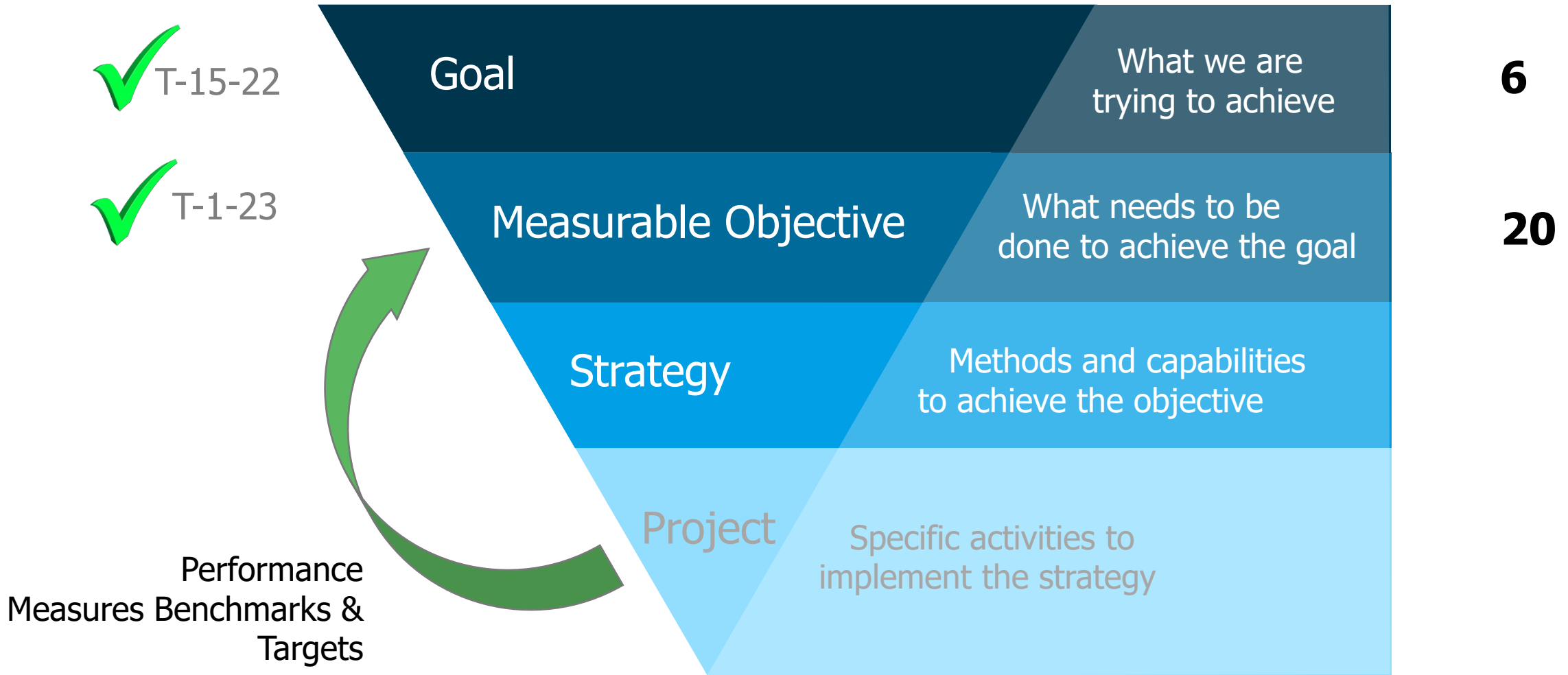
Reduce per capita energy consumption and promote alternative fuel resources to increase affordability and resilience of regional energy supplies.



T-1-23

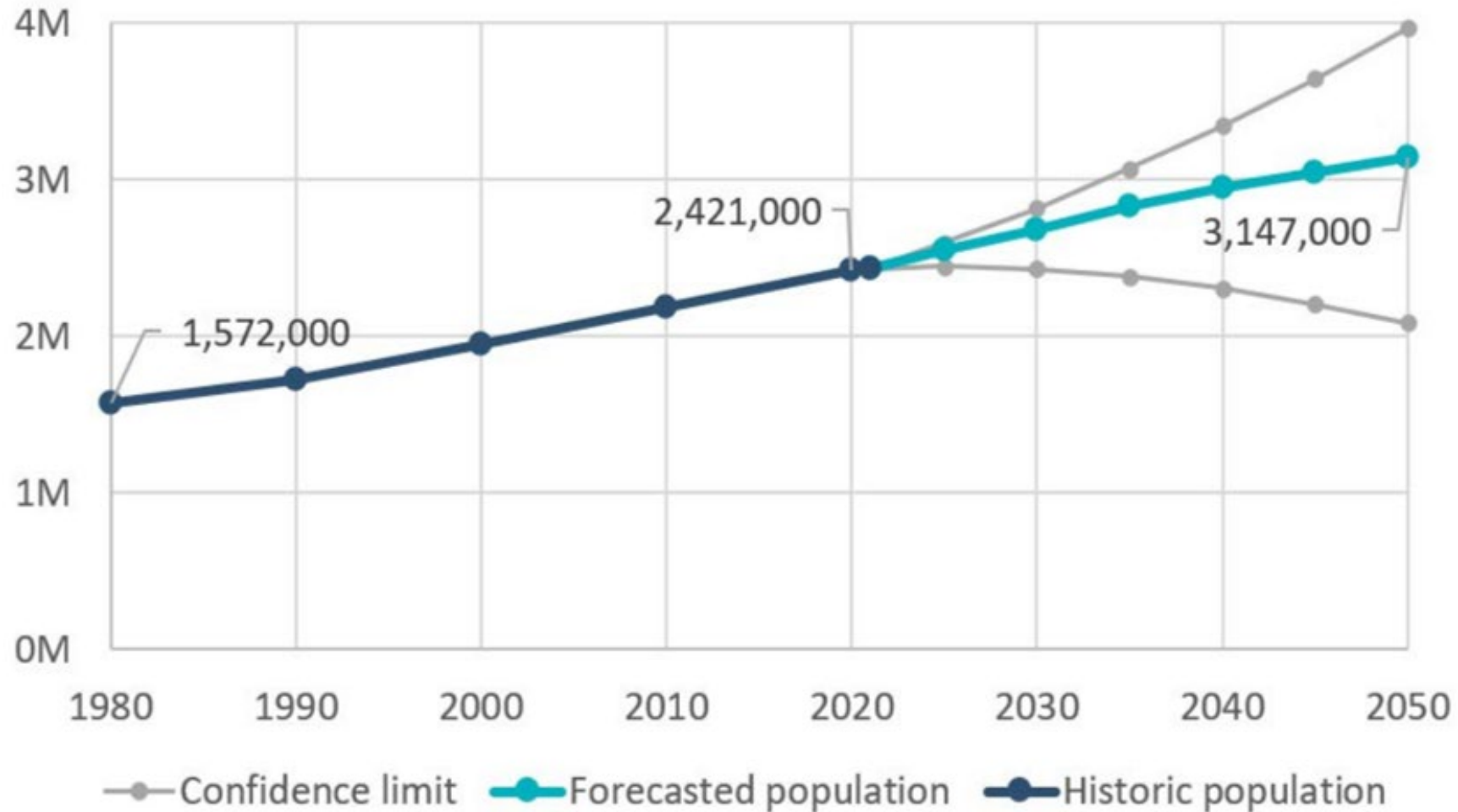
Measurable Objectives

- **2-5 objectives for each goal**
 - What needs to be done to achieve the goal?
 - Chosen to measure certain aspects of each goal that can be impacted through transportation or the transportation system
 - Based on data availability and measurability
- **1 or more measures for each objective**
 - How do we know if we are making progress?



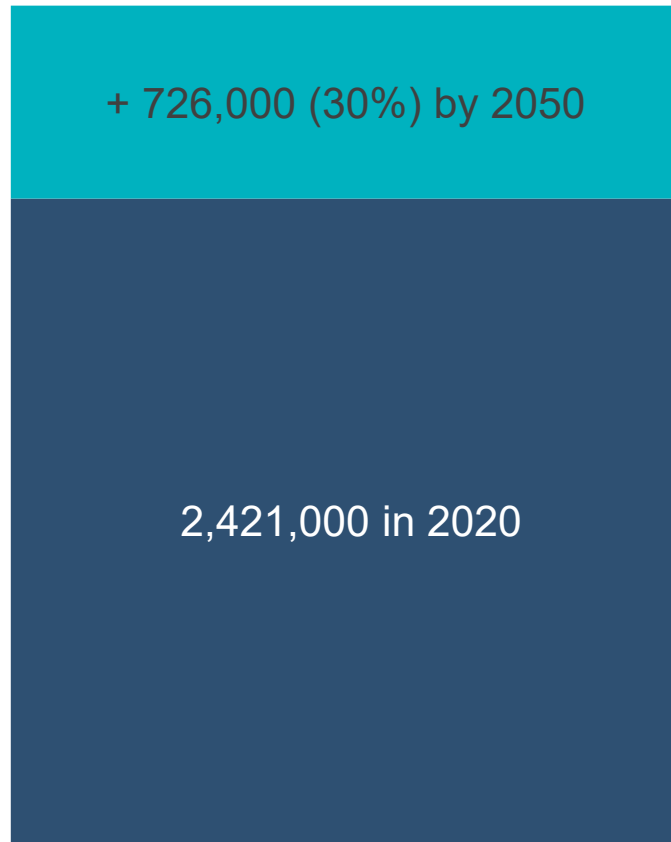


15-County Region Population

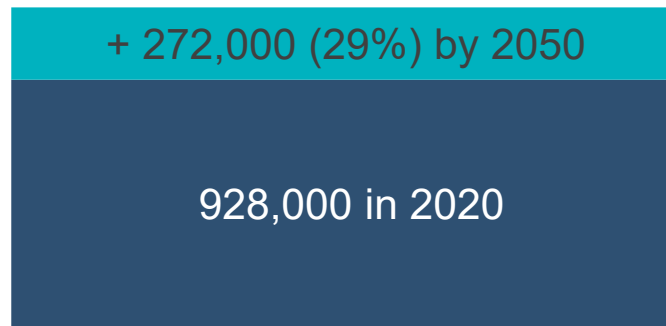




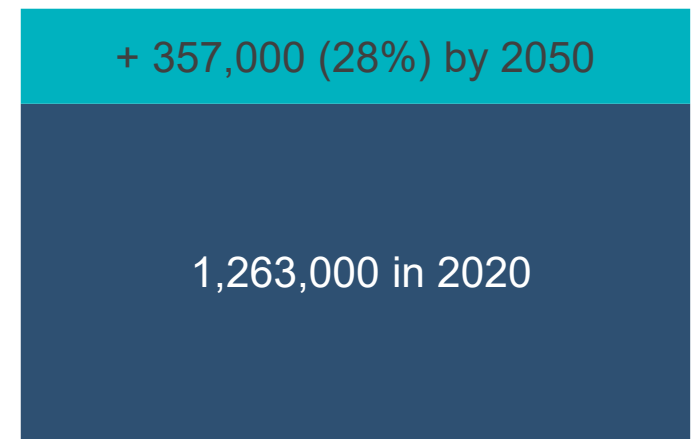
15-COUNTY REGIONAL GROWTH



Population



Households



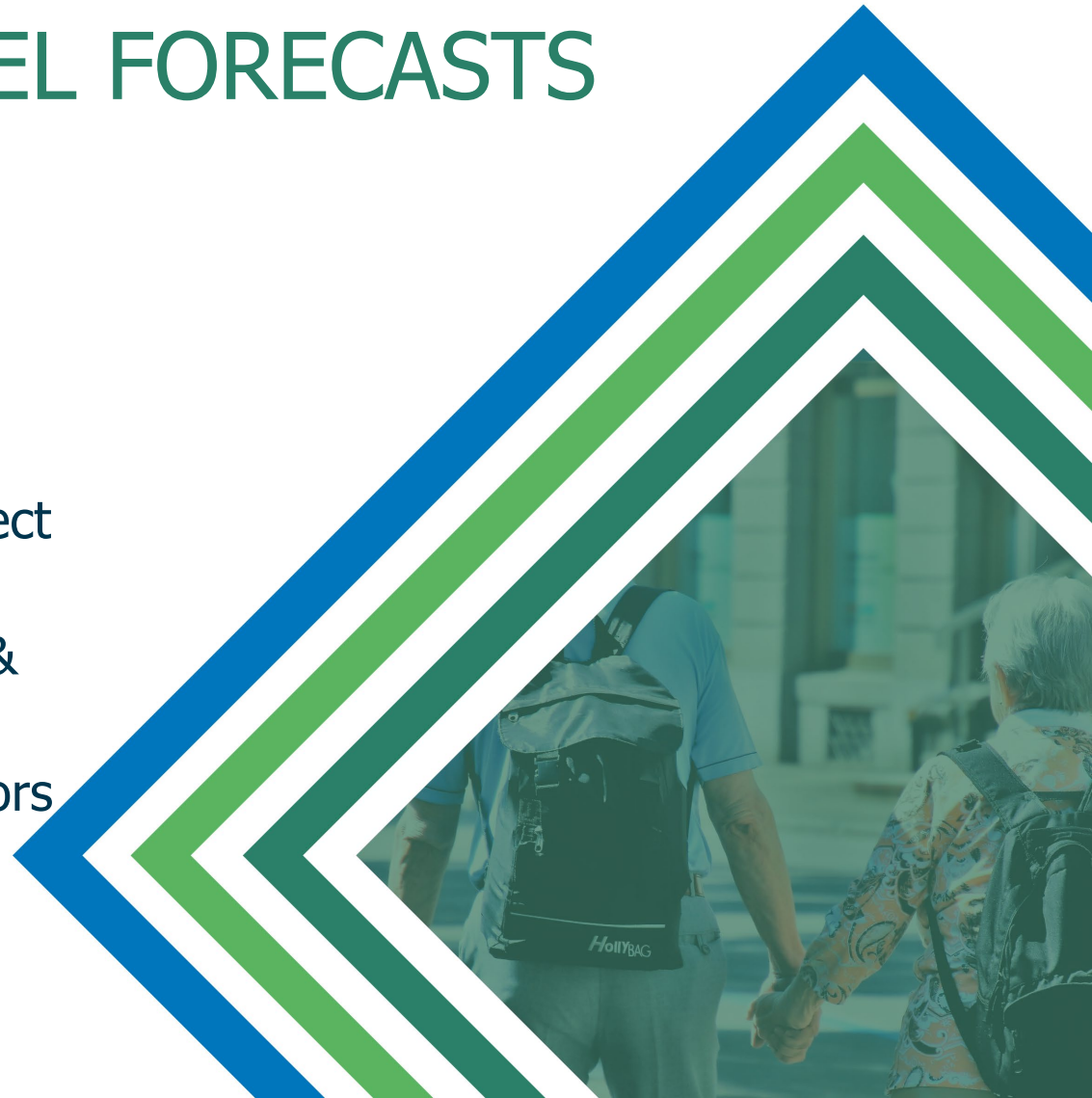
Jobs



TRAFFIC ANALYSIS ZONE LEVEL FORECASTS

- **Process and Inputs:**

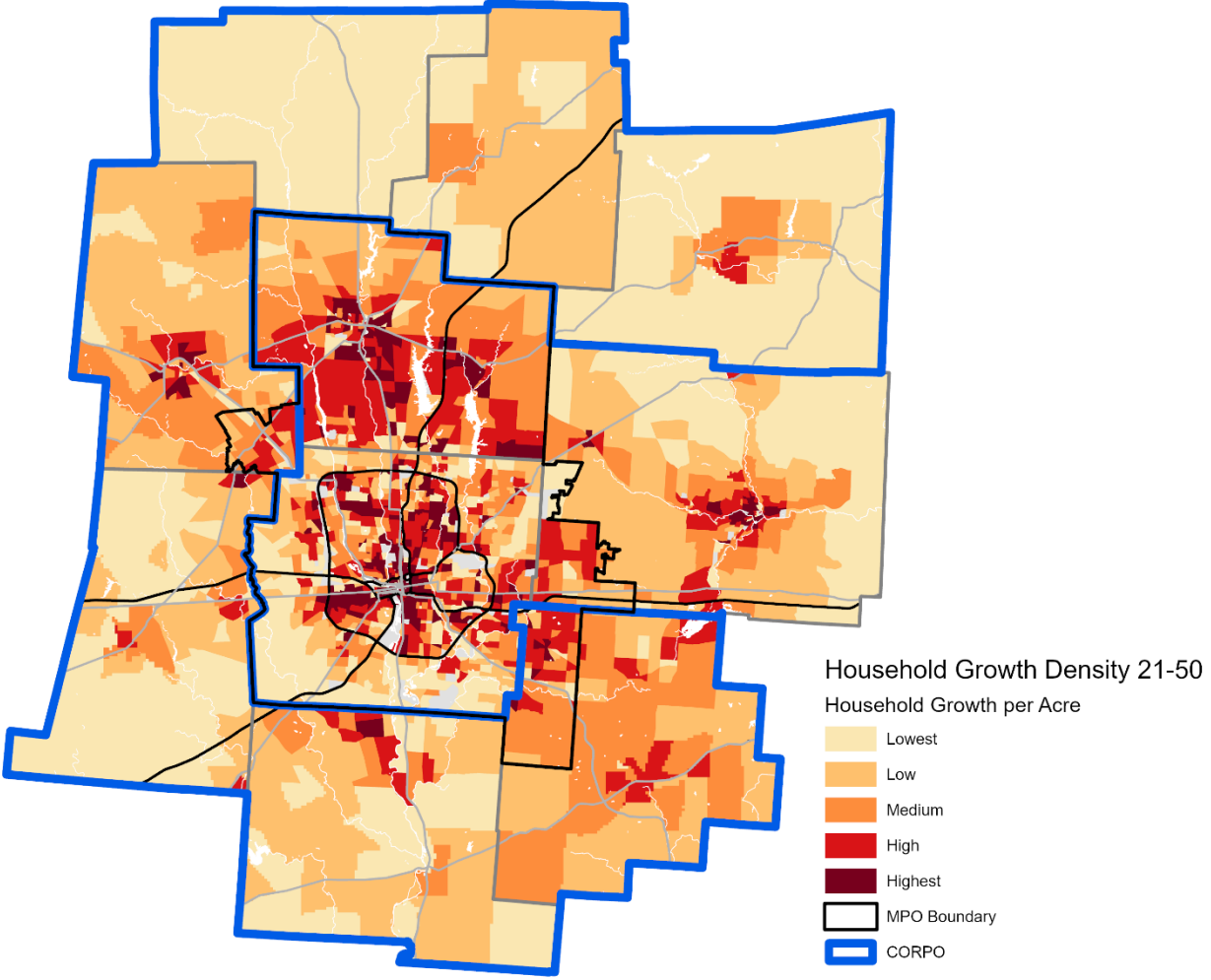
- Establish base year (2021) TAZ estimates of population and employment
 - (based on Decennial Census population, building permits, QCEW, parcel-level land use review)
- Forecast year (2050) county control totals to project total growth
- Update future land use from local land use plans & points of interest
- Distribute growth using land use policies and factors that attract/deter development
- Revisions based on local review



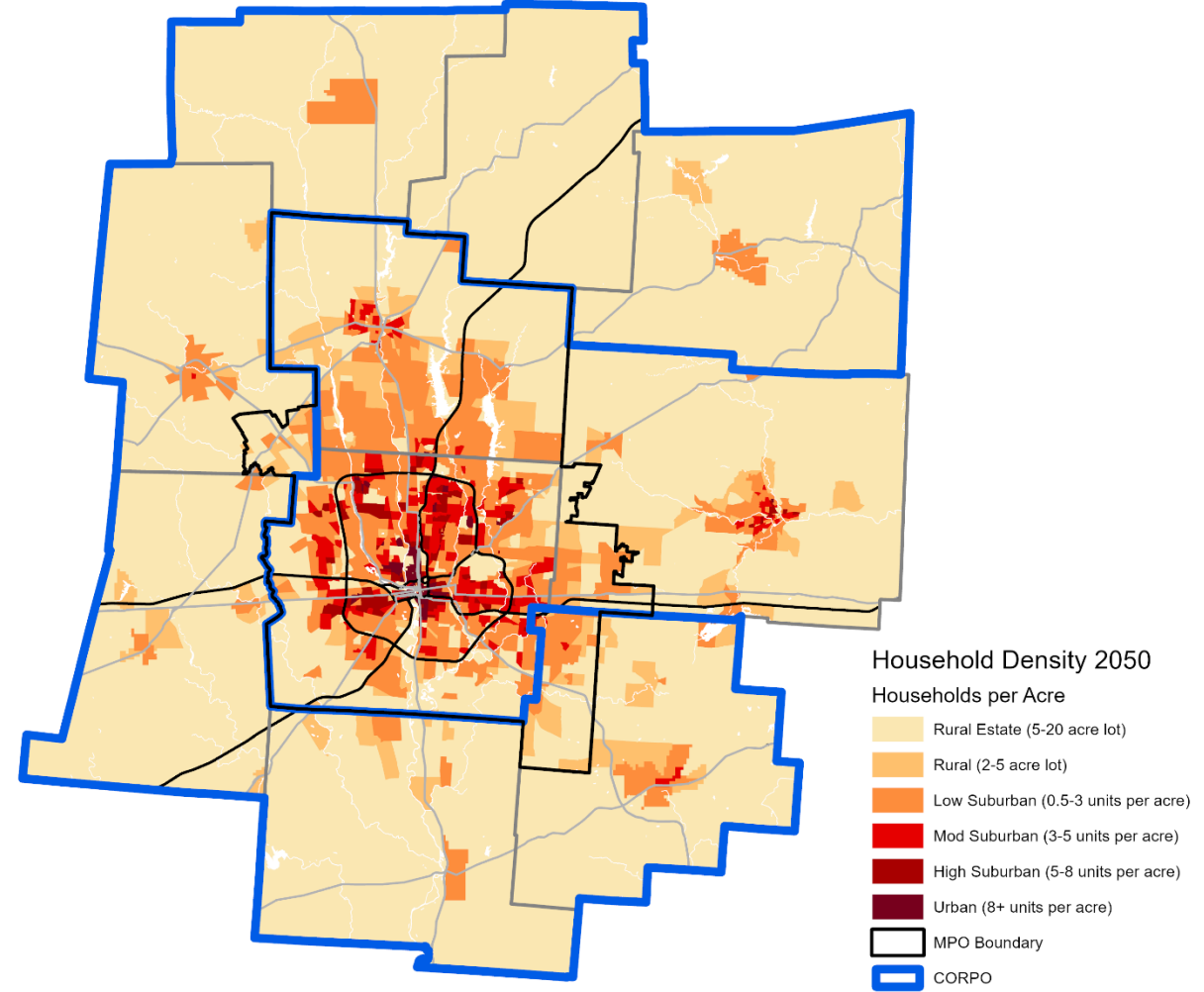
✓ T-15-23

2050 Households

Growth Density



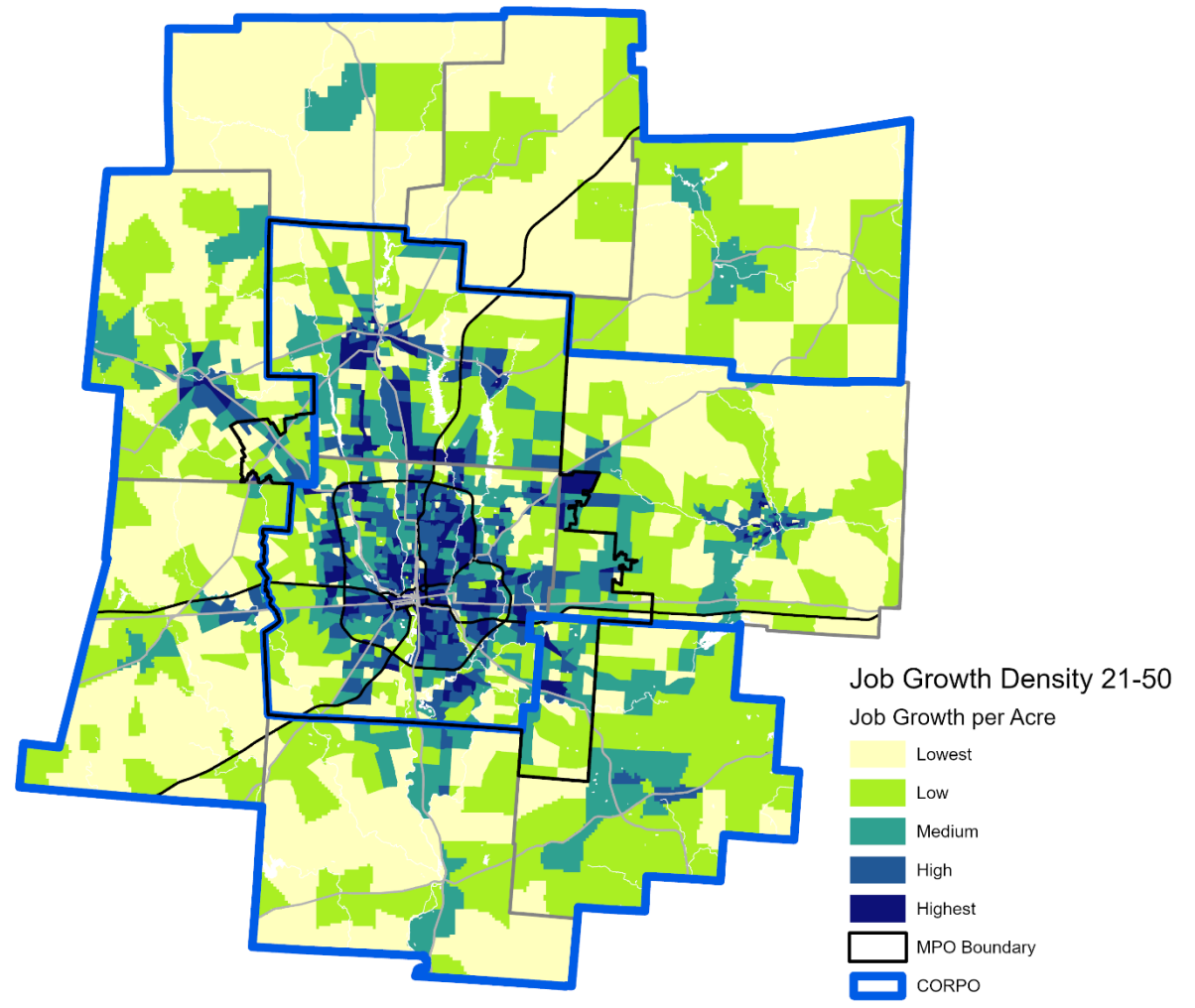
Total 2050 Density



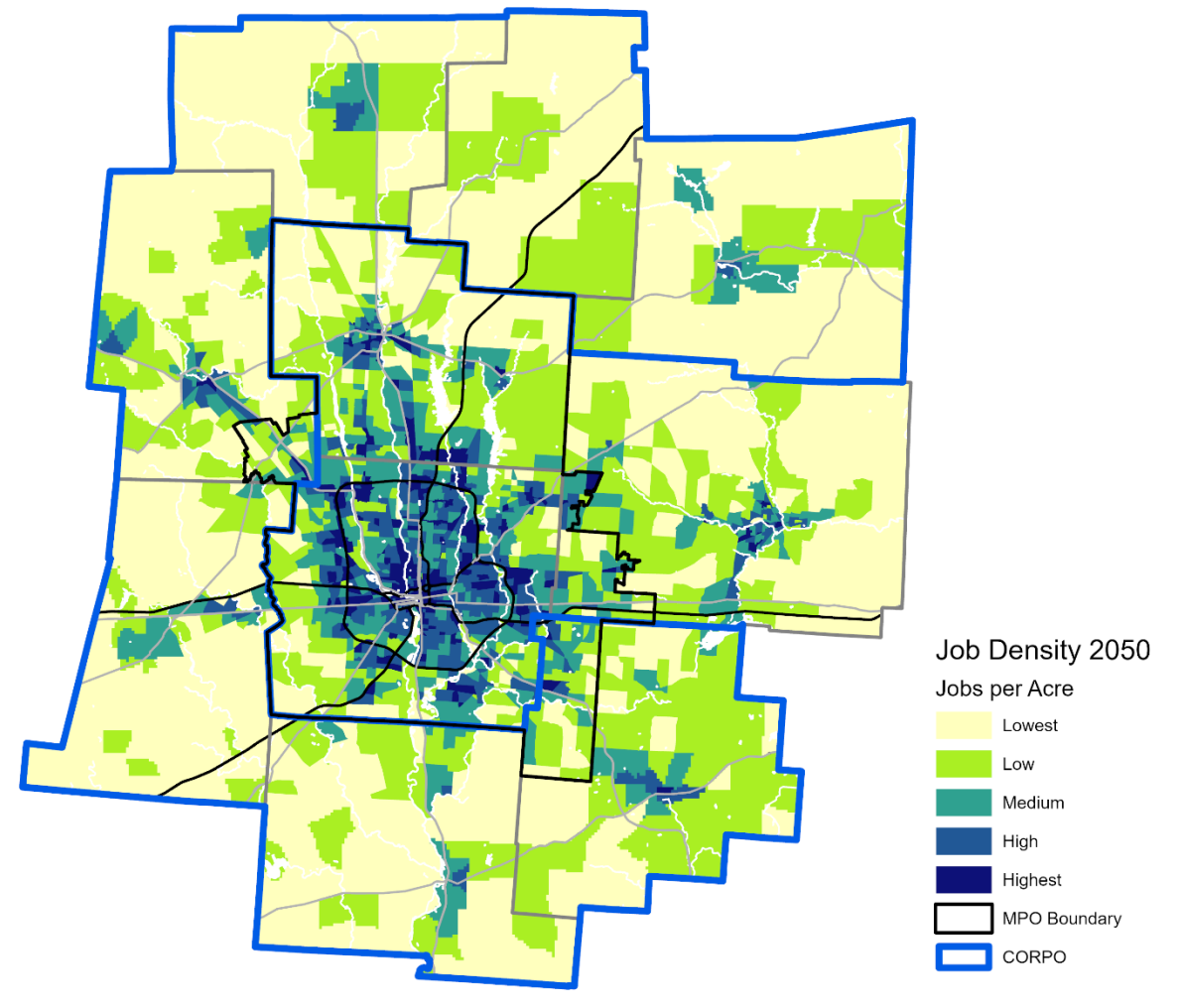
✓ T-15-23

2050 Jobs

Growth Density



Total 2050 Density





STRATEGIES

- **System Management**

- Physical Preservation - 7
- Operations – 12
- Safety – 6
- Security - 4
- Demand Management - 7

- **System Related**

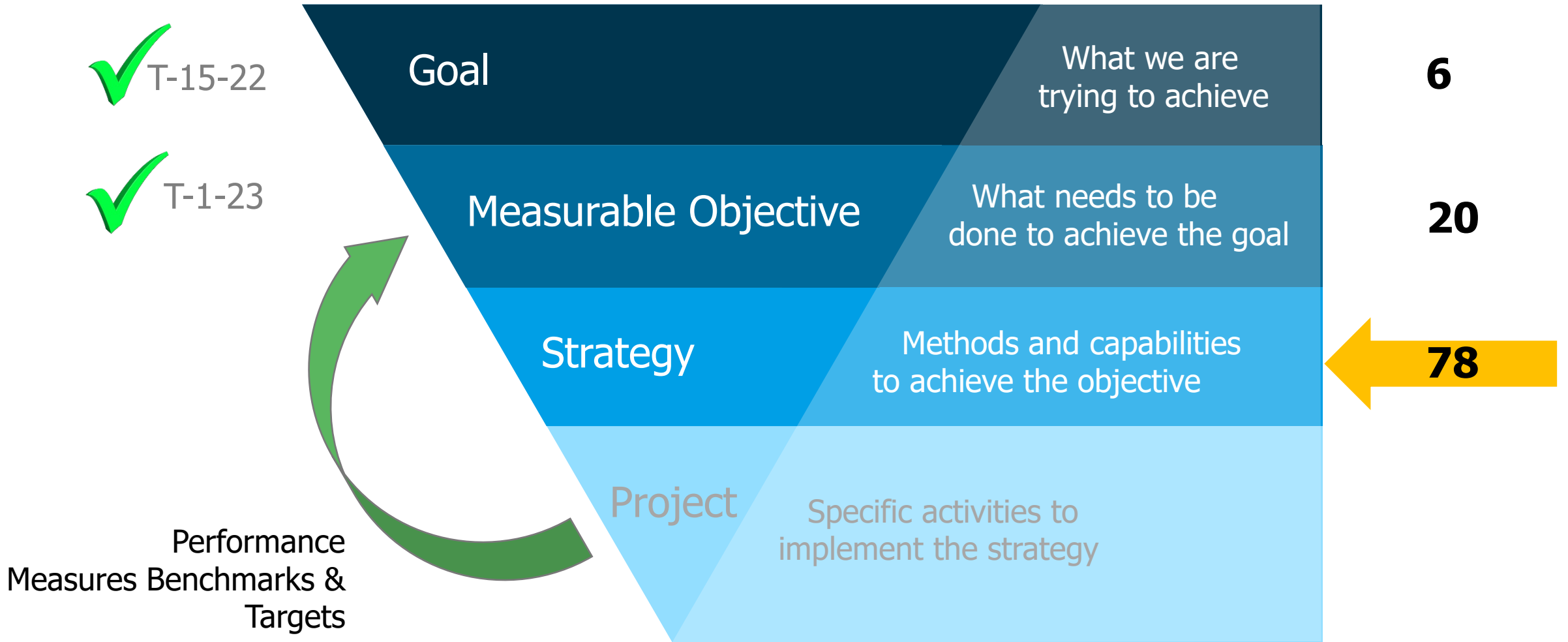
- Collaboration
- Serving all population groups

- **System Development**

- **Infrastructure**

- Bike & Pedestrian - 8
- Transit - 7
- Freight Rail - 7
- Multimodal Connections – 8
- Roadway - 8

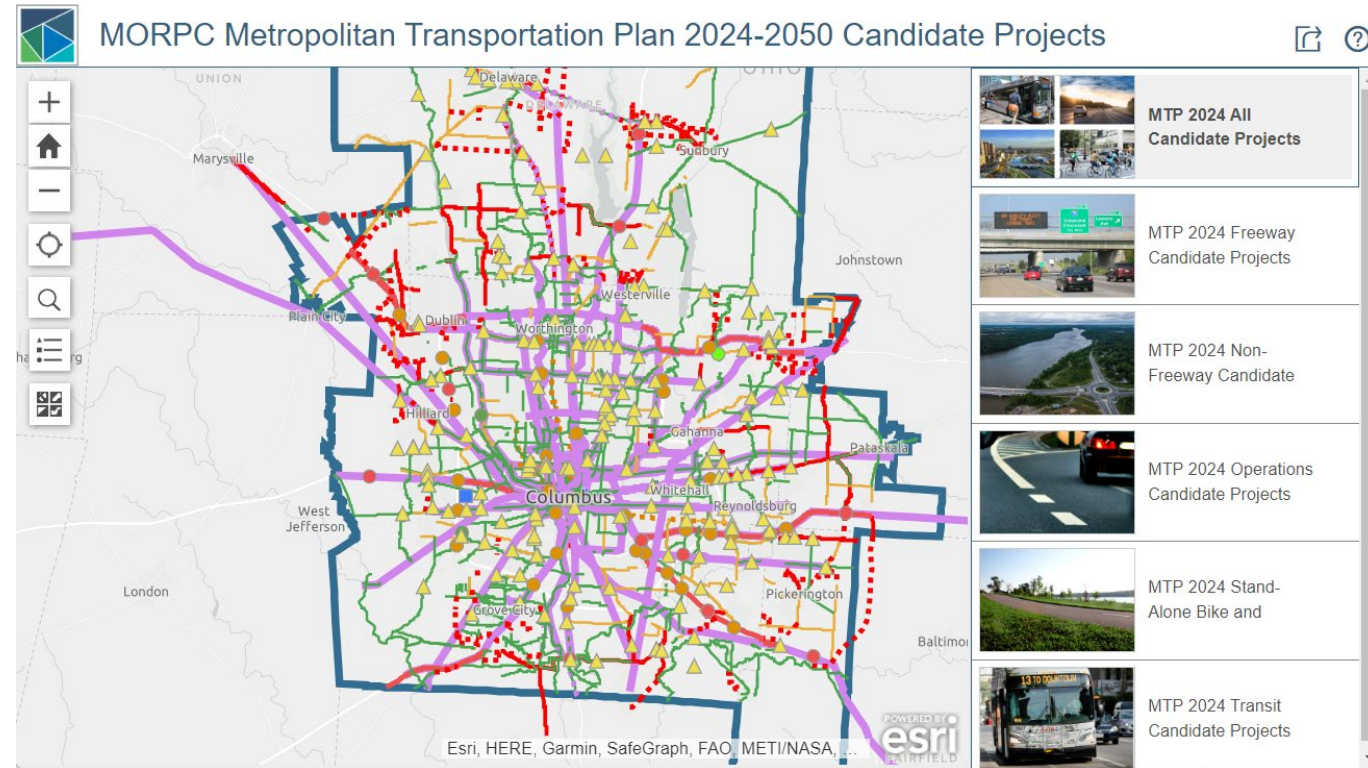
- Alternative Fuel infrastructure
- Storm water & green infrastructure





CANDIDATE PROJECTS

- Local, State, Regional Plans
- Interactive Webmap
 - Publicly comment on candidate projects
 - Identify locations with safety, connectivity, or congestion issues
 - Suggest projects to be evaluated for inclusion in MTP

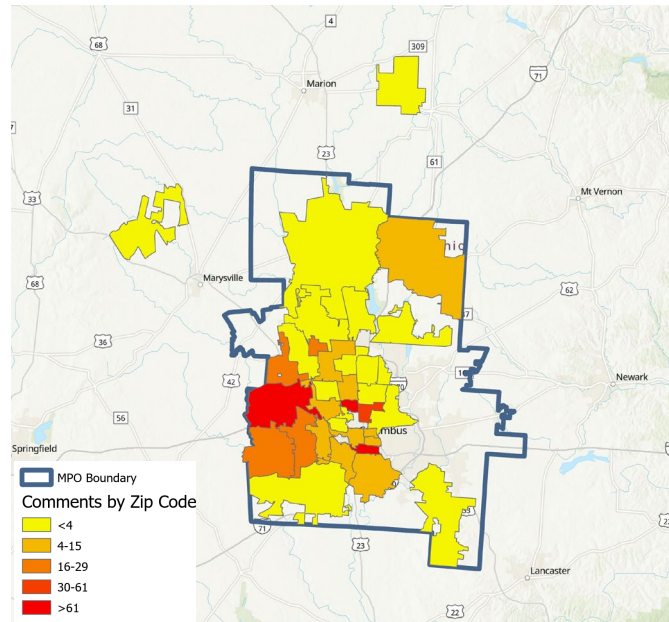




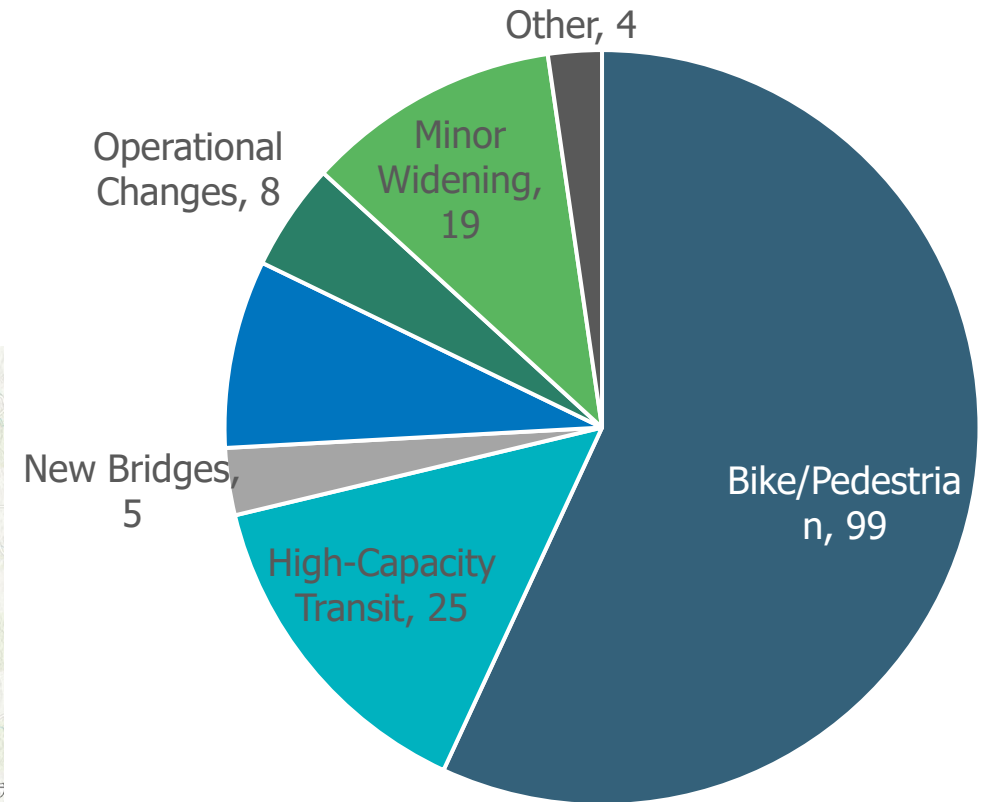
SUGGESTED CANDIDATE PROJECTS

- 174 suggested projects drawn by the public
 - 71% of project suggestions were for new bike/pedestrian facilities or high-capacity transit lines

- 1,052 total comments
- 555 comments (53%) provided optional zip code information



Suggested Projects by Type





CANDIDATE PROJECTS BY TYPE:

- Bike Pedestrian (613)
- Intersection (229)
- Major Widening or New Roadway (212)
- Minor Widening & Safety (173)
- Transit (44)
- Interchange (46)
- Freeway (27)
- Operational Management (22)
- Other (18)



FISCAL ANALYSIS

Project Cost Estimates

- Current estimates when possible (TIP, CIP, plans, etc)
- Develop unit costs per mile, and similar projects recently constructed
- Year of expenditure dollars (annual inflation factors)

Funding Resources Forecast

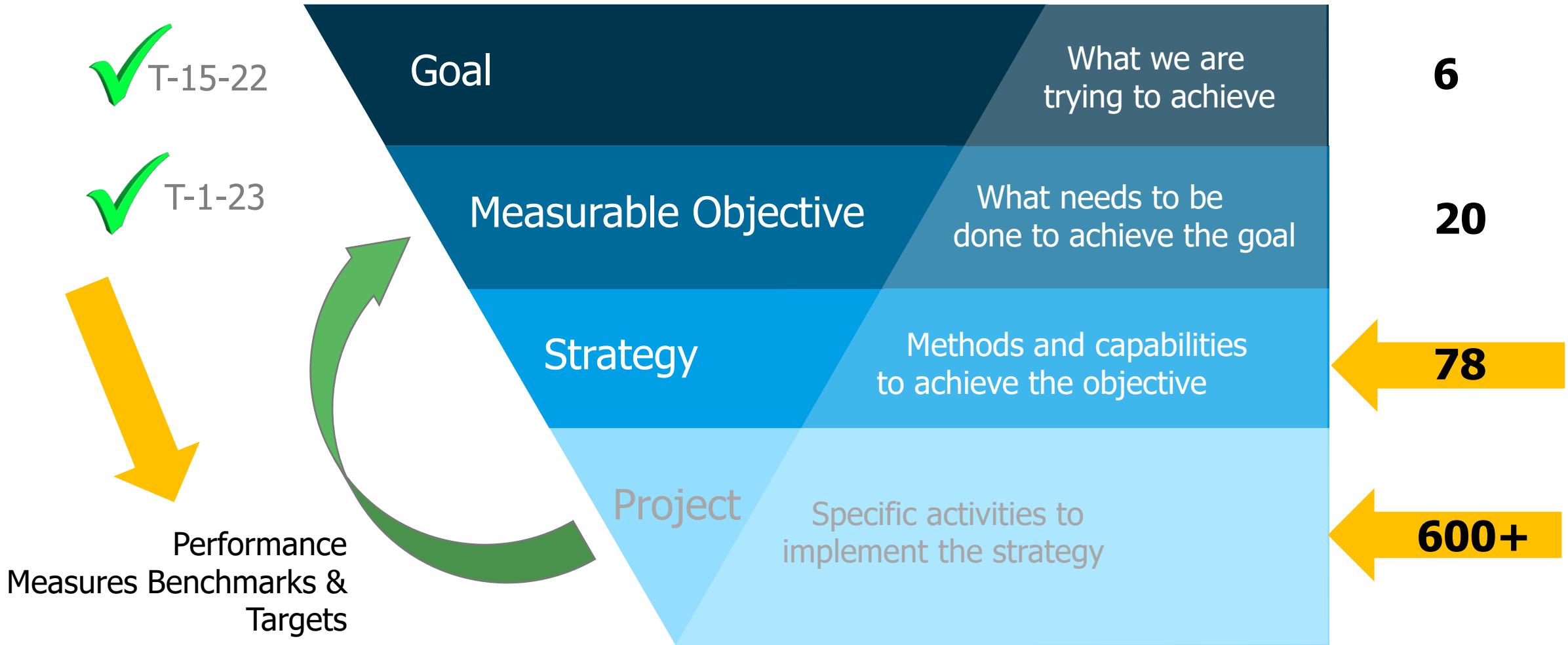
- Forecast of resources available via various programs through 2050
 - Federal – generally controlled by ODOT or MORPC, discretionary grants
 - State – controlled by ODOT or through programs like OPWC or CEAO
 - Local government or private developer



PROJECT EVALUATION

- Mostly Quantitative & Some Qualitative criteria
 - Which projects best advance goals/objectives/performance measures?
- Public comments
- Fiscal Analysis

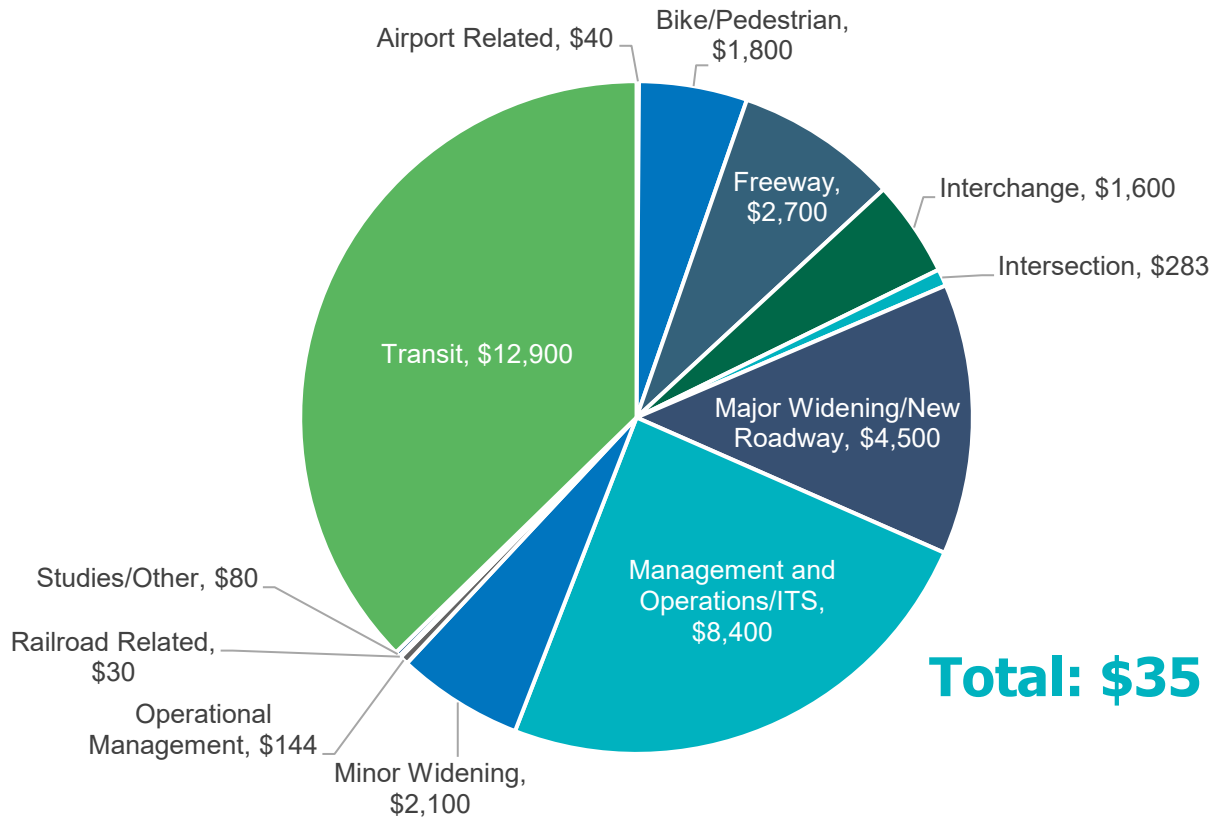






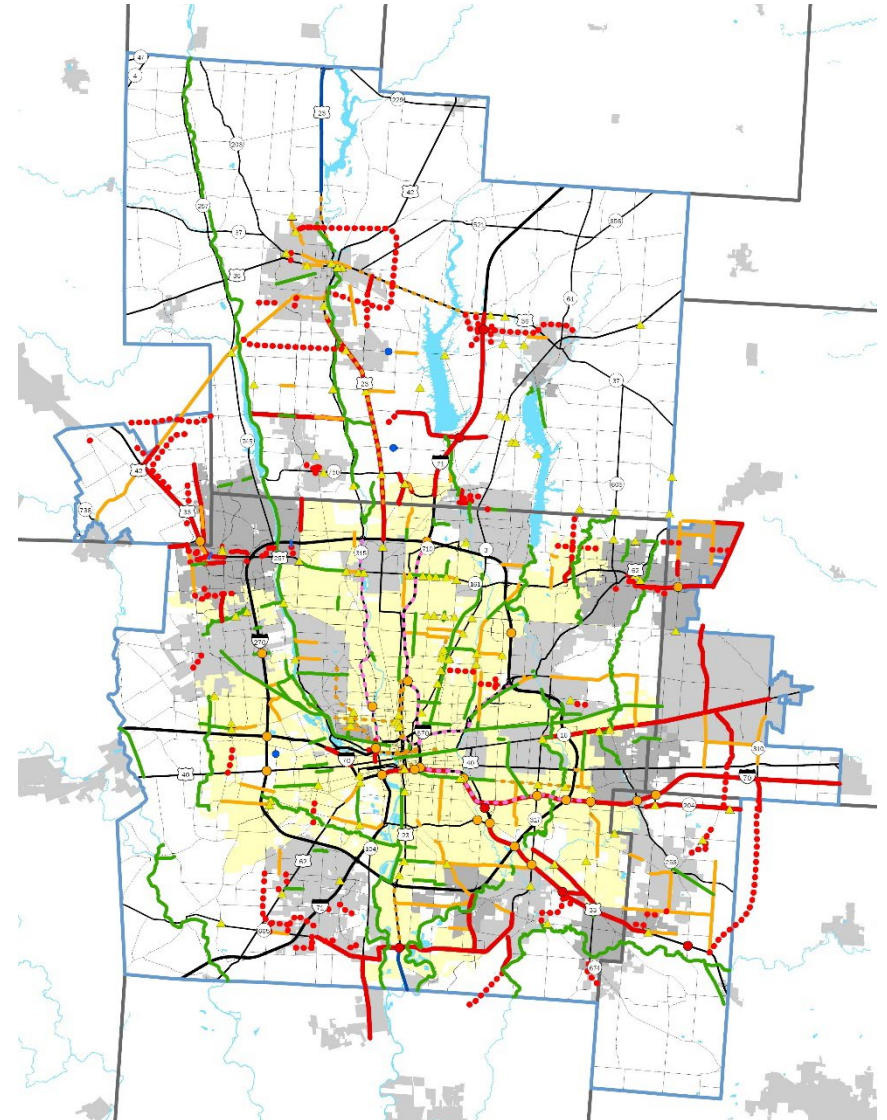
DRAFT PROJECTS

(costs in millions)







Total: \$35 billion

Webmap available at: www.morpc.org/mtp2050

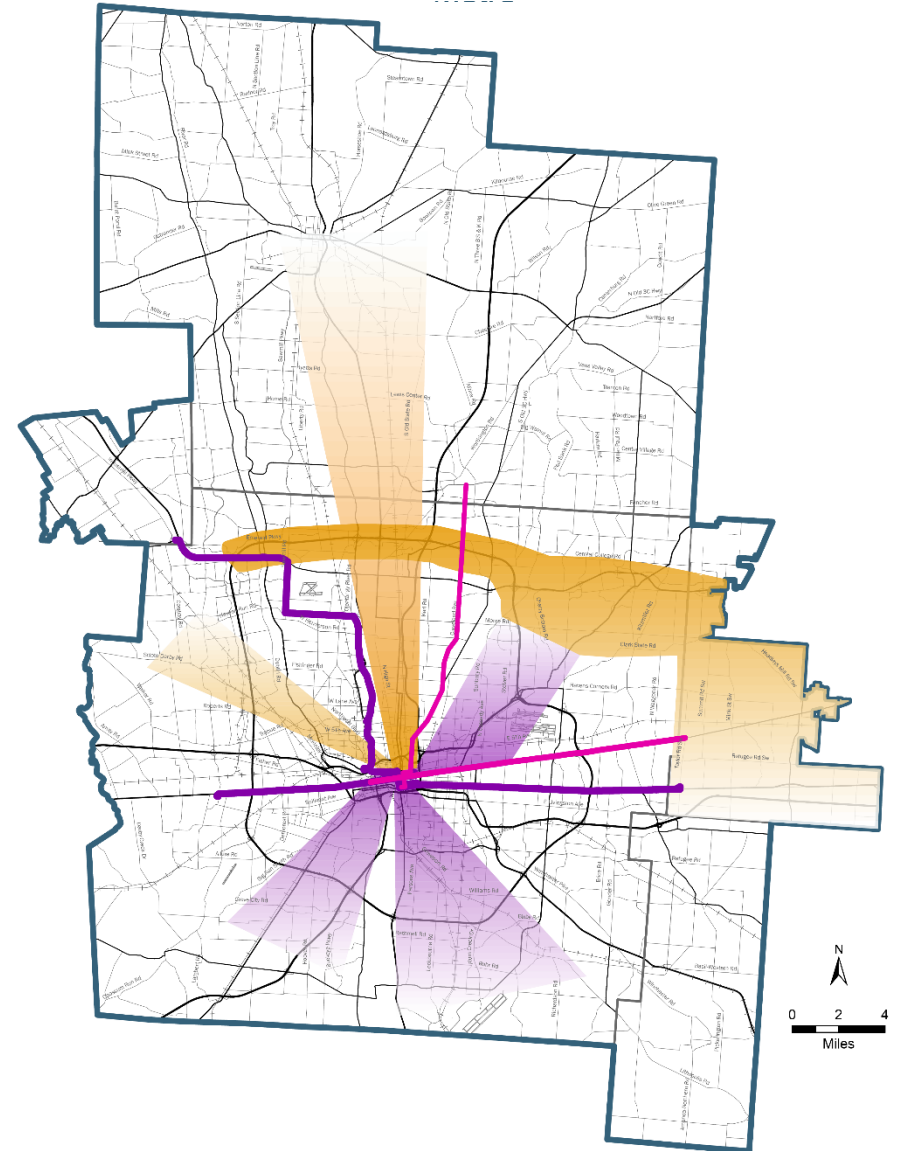




DRAFT TRANSIT PROJECTS

-  Planned BRT Corridors
-  Premium Transit Improvements
-  Future Rapid Transit Corridors
-  Corridors to Study

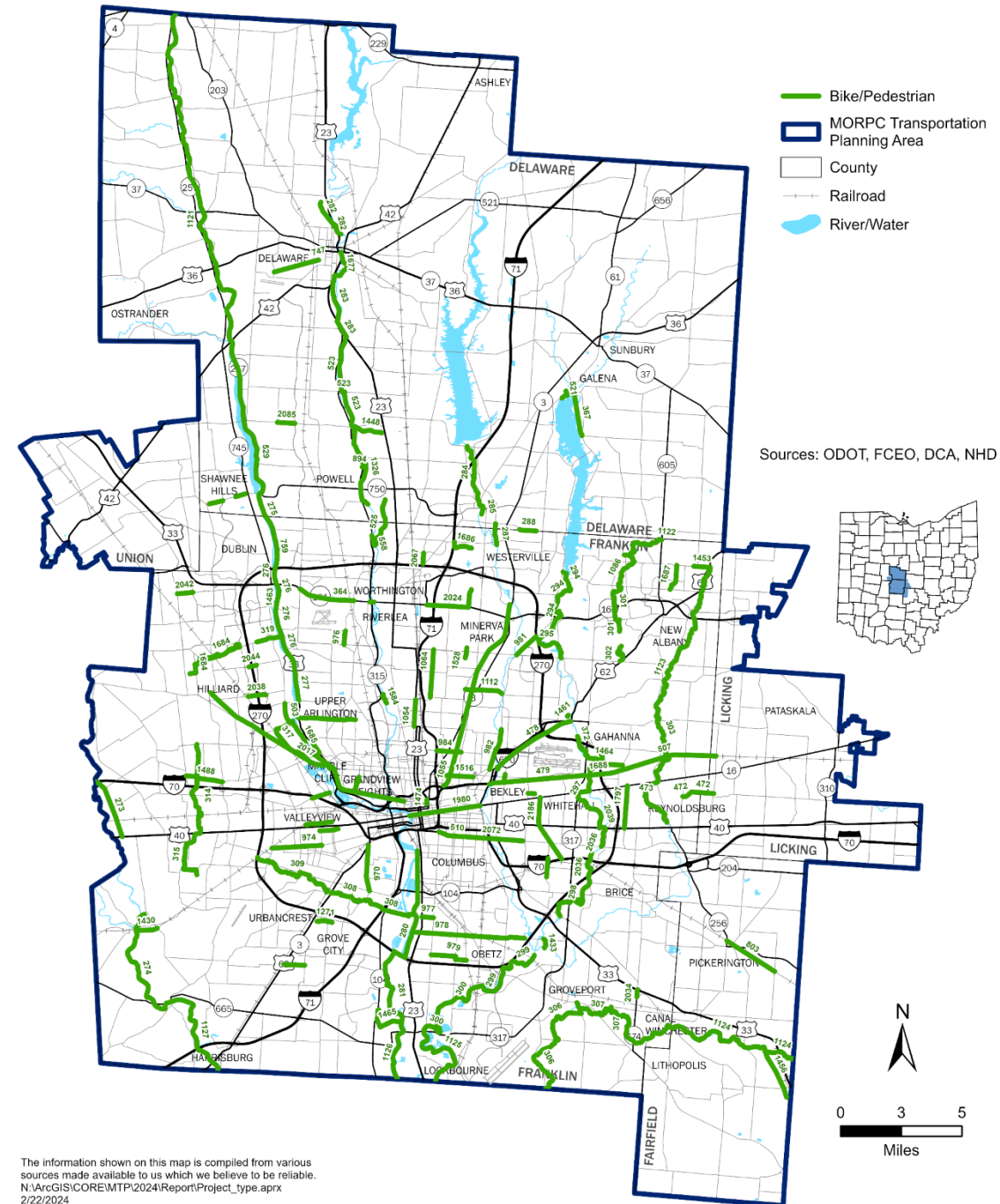
45% Increase in Transit Service





DRAFT STAND-ALONE BICYCLE/PEDESTRIAN PROJECTS

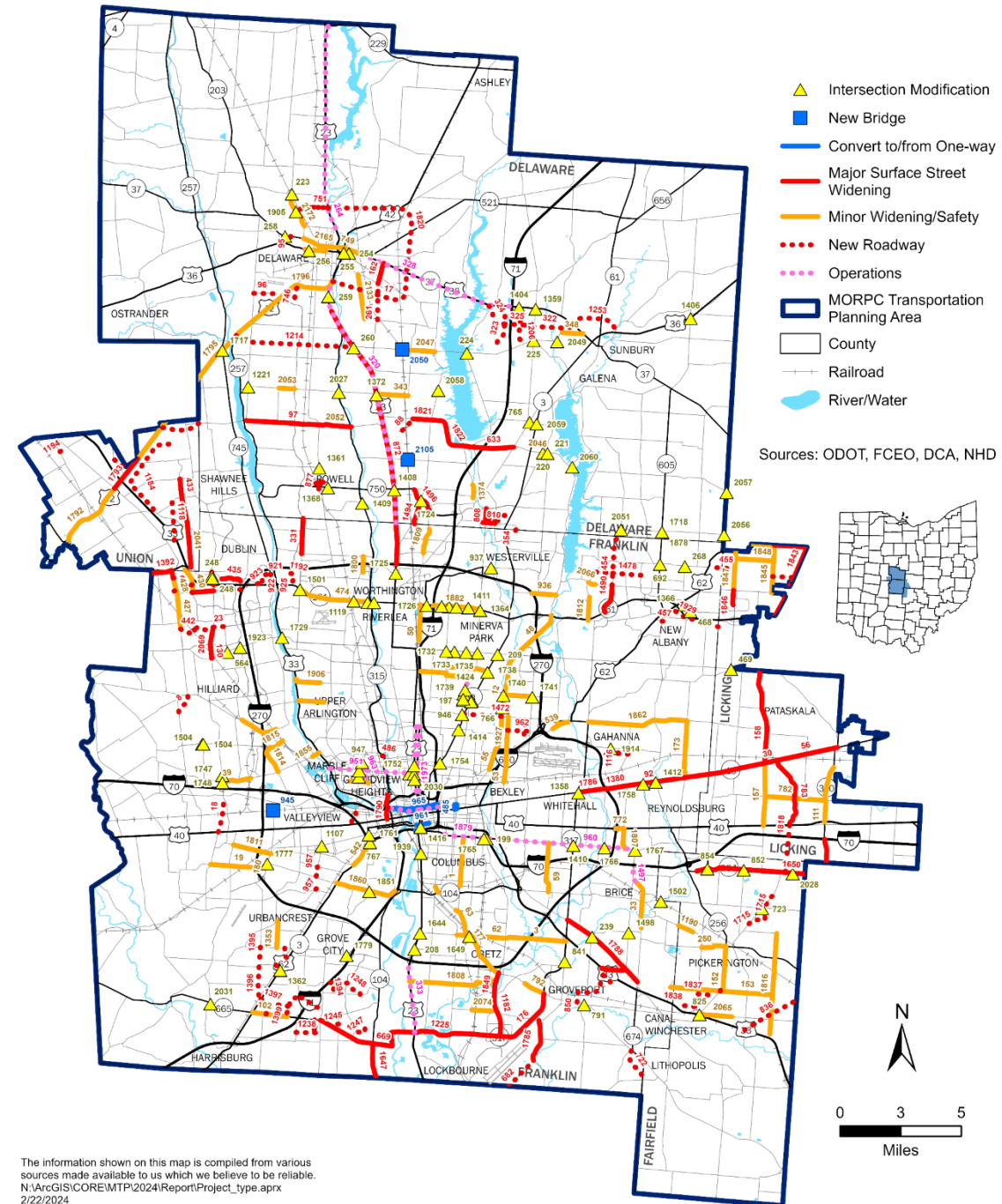
725+ miles of new facilities





DRAFT NON-FREEWAY PROJECTS

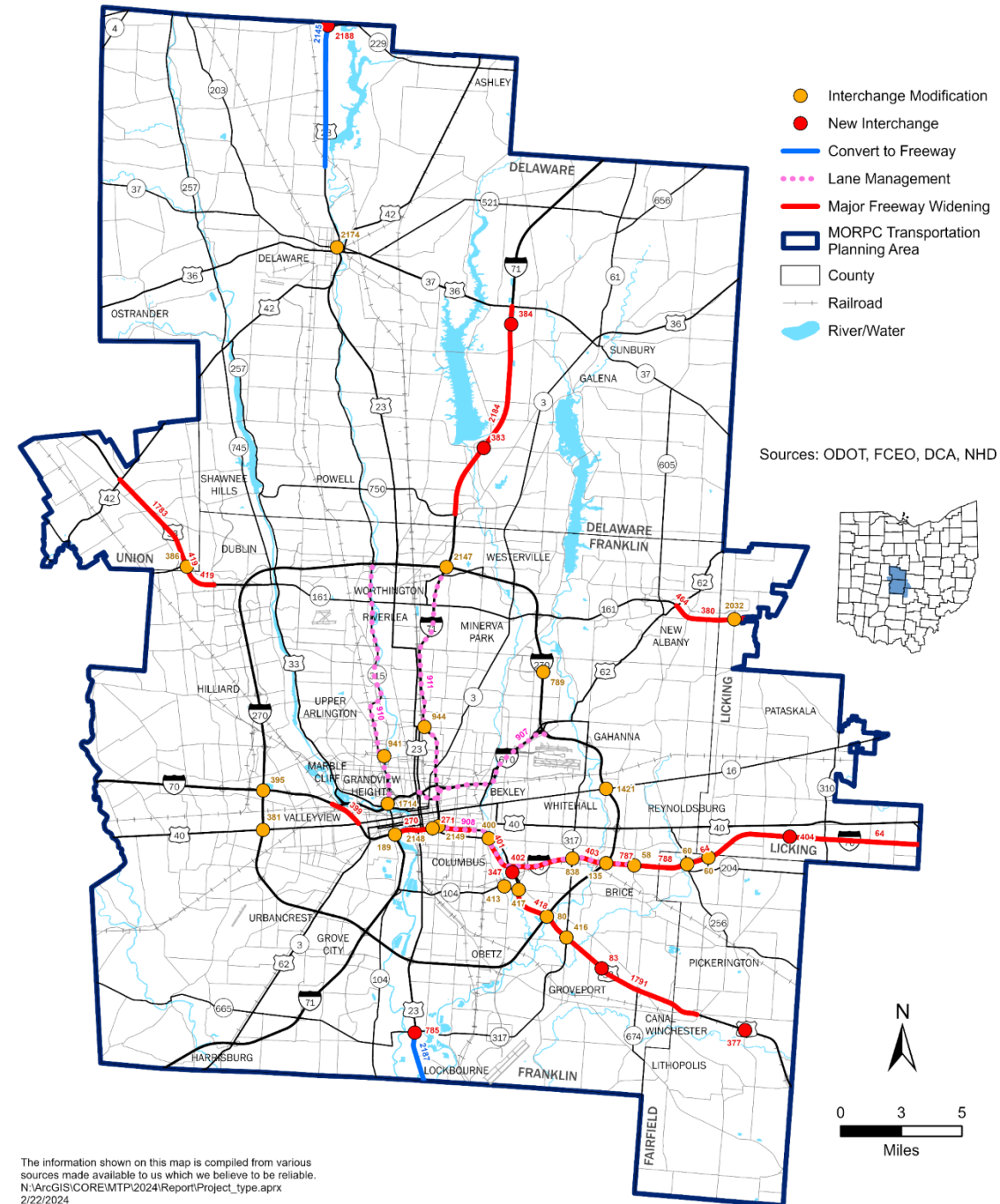
100+ intersections
57 miles operational/access management
120+ miles minor widenings
90+ miles major widenings
90+ miles of new roadways





DRAFT FREEWAY PROJECTS

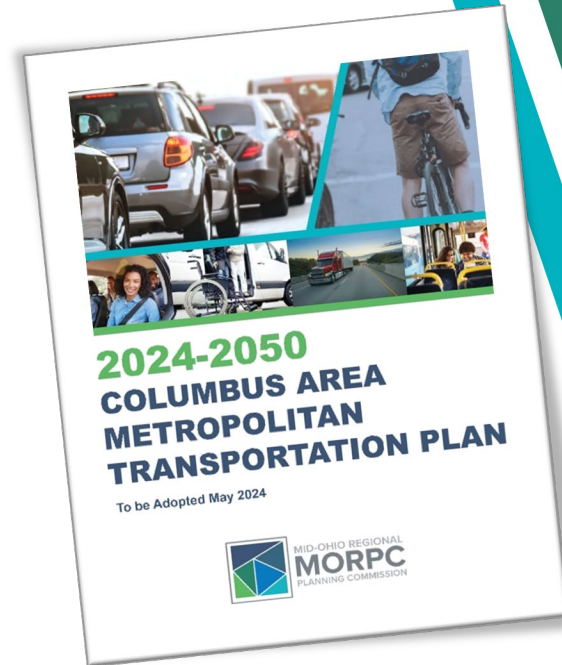
42 miles lane management
19 miles convert to freeway
31 new or modified interchanges
48 miles freeway widening





MTP DOCUMENT

- Chapter 1: **Plan Purpose & Goals**
- Chapter 2: **Regional Trends**
- Chapter 3: **The Transportation System**
- Chapter 4: **System Management**
- Chapter 5: **Demand Management**
- Chapter 6: **System Development**
- Chapter 7: **Project Evaluation & Fiscal Constraint**
- Chapter 8: **Summary of Strategies & Projects**
- Chapter 9: **Plan Implementation**





OUTREACH & WHAT'S NEXT?

- Community presentations – January - April
 - 50+ Presentations Scheduled
- Regular presentations to Community Advisory Committee, Transportation Advisory Committee and Transportation Policy Committee
- Full draft document on website – www.morpc.org/mtp
- MORPC MTP Open House: **March 19th 3:30-6:30PM**
- Public comment period open through March
 - Review and Comment on Draft Plan
 - www.morpc.org/mtp2050
 - mtp@morpc.org
- Feedback incorporated into final document
- MTP Adoption May 2024

