

# Erie Regional Freight Plan



Presented to the  
OARC Transportation  
Committee

**Friday, April 26, 2024**

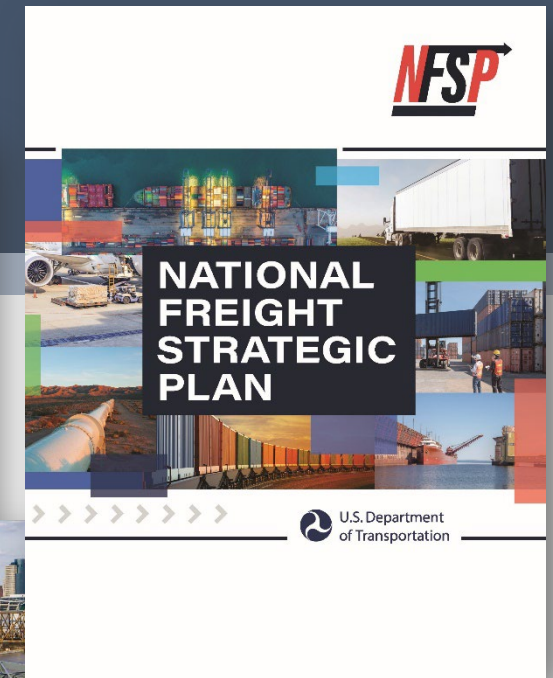
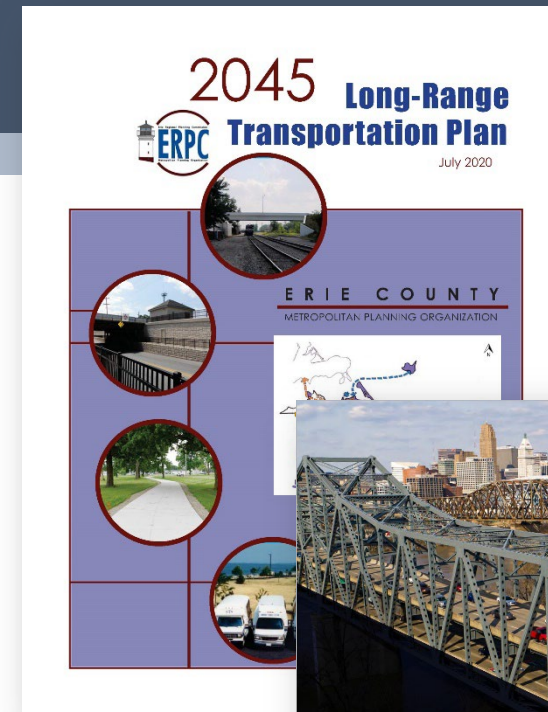
# Why a Freight Plan?

“To improve the condition and performance of the national freight network to ensure that the national freight network provides the foundation for the United States to compete in the global economy.”

*23 U.S.C. §167. National Highway Freight Program*

...or state/Ohio network...

...or Erie County region.



Intent to align with

# Ohio's Statewide Strategic Freight System

Roadways, Railways, Airports, and Marine Highways

**LEGEND**

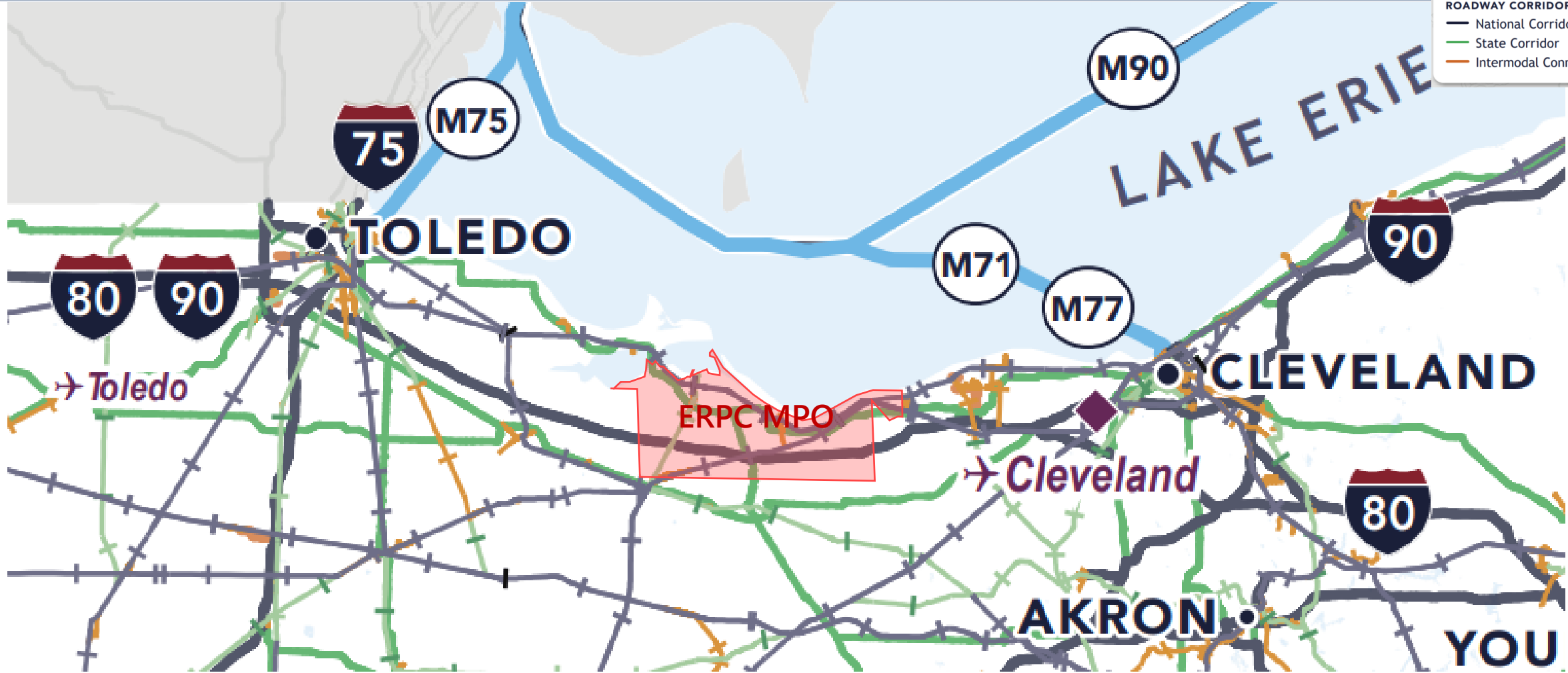
- Nat'l Cargo Airport
- Other Cargo Airport
- Nat'l Maritime Corridor

**RAILWAY CORRIDORS**

- National Corridor
- State Corridor
- Regional Corridor

**ROADWAY CORRIDORS**

- National Corridor
- State Corridor
- Intermodal Connector



# ERPC Freight Profile

- Net importer with heavy tourism influence
- Top commodity flows of construction materials, food and agriculture, advanced manufacturing and energy
- 2 ports, 4 railyards and interstate access

Table 1: Top Import and Export Community Categories by Mode (tons)

	Top Import Commodity Categories	Top Export Commodity Categories
<b>Air</b>	Advanced Manufacturing (0.73k) Other <sup>1</sup> (0.49k) Chemicals and Pharmaceuticals (0.06k)	Motorized Vehicles & Parts (0.35k) Advanced Manufacturing (0.25k) Food & Agriculture (0.06k)
<b>Truck</b>	Food & Agriculture (1431k) Construction Materials (718k) Other <sup>1</sup> (423k)	Food & Agriculture (2176k) Other <sup>1</sup> (200k) Advanced Manufacturing (186k)
<b>Multiple Modes and Mail</b>	Other <sup>1</sup> (51k) Advanced Manufacturing (12.9k) Food & Agriculture (10.5k)	Food & Agriculture (16.3k) Advanced Manufacturing (10.5k) Other <sup>1</sup> (3.8k)
<b>Water</b>	Energy (2544k) Construction Materials (495k) Other <sup>1</sup> (163k)	Construction Materials (163k) Food & Agriculture (103k) Energy (29k)
<b>Rail</b>	Energy (4089k) Chemicals, Pharmaceuticals & Plastics (126k) Construction Materials (54k)	Construction Materials (368k) Food & Agriculture (19k) Energy (14k)

<sup>1</sup> "Other" includes tobacco products, metal ores and concentrates, fertilizers, logs, and other wood in the rough, pulp, newsprint, paper and paperboard, printed products, textiles and leather, base metals, furniture and mattresses, lamps, and illuminated signs and waste and scrap.

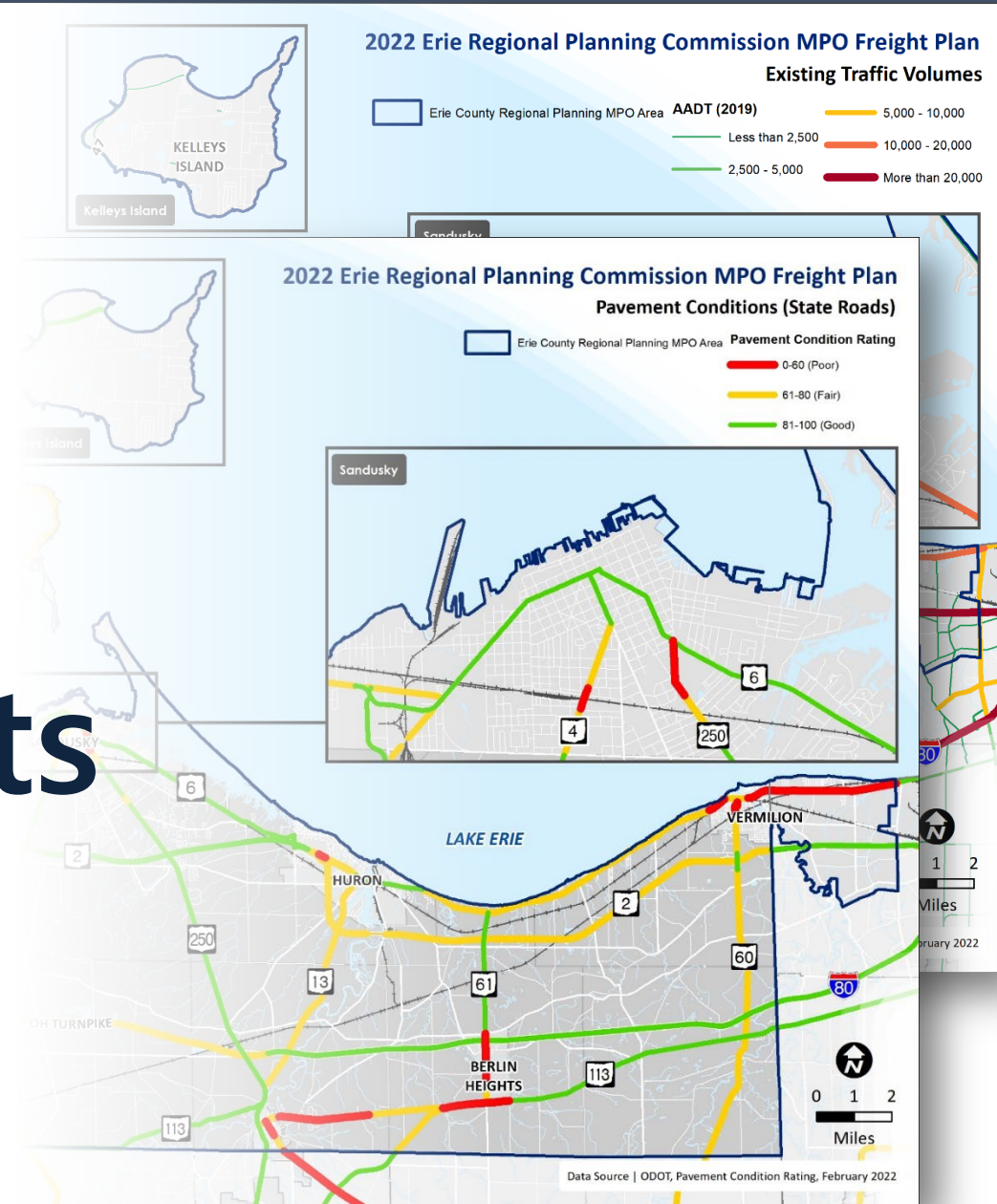
# Core Plan Elements

Goals (achieved through supporting strategic initiatives)

A Core Freight Network

Freight Planning and Programming

Implementation Approach



# Goals

1. Implement an integrated land use and freight transportation planning process
2. Invest in and promote the region's multimodal and intermodal capabilities
3. Improve freight mobility, safety, and operations
4. Expand regional freight planning capabilities
5. Establish an ongoing program for increasing freight awareness among all stakeholders
6. Foster strategic partnerships and alliances for public-private regional freight collaboration



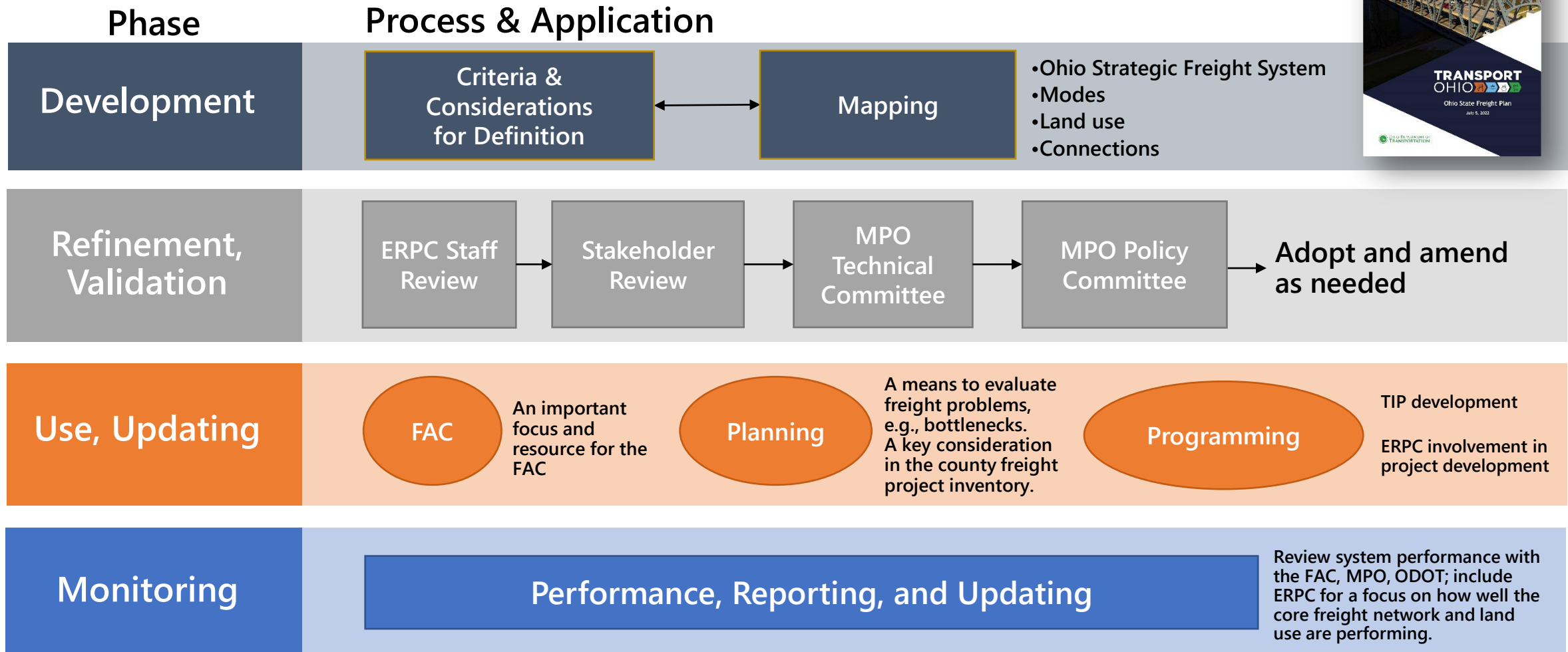
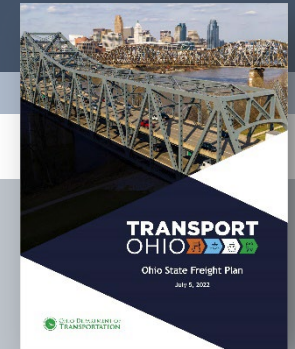
The ERPC

# Core Freight Network

- **Identifies core facilities for freight movement** within the county and key connections beyond the county; builds upon Ohio's Strategic Freight System.
- **A tool for:**
  1. planning and programming projects.
  2. public-private collaboration, especially through the Freight Advisory Committee.
  3. consideration of freight needs in relation to land use, safety analysis, and economic development.
  4. coordination with neighboring regions and statewide freight planning.
- A "living" tool to be updated as conditions change.



# DEVELOPMENT & USE OF THE CORE FREIGHT NETWORK

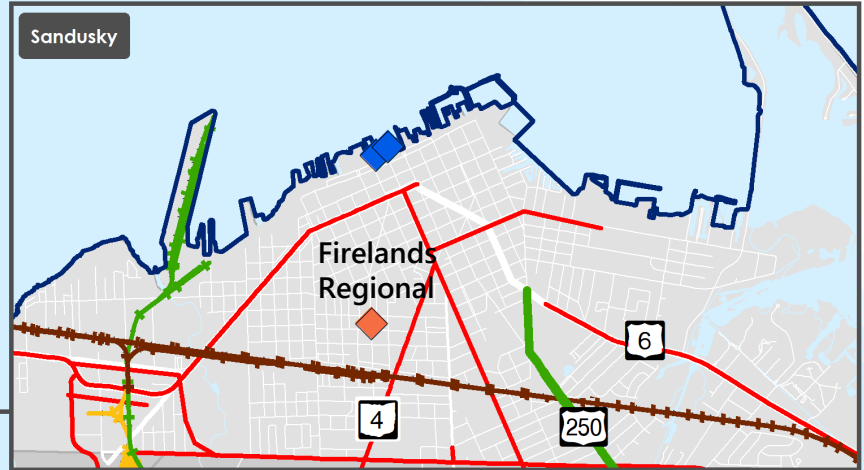
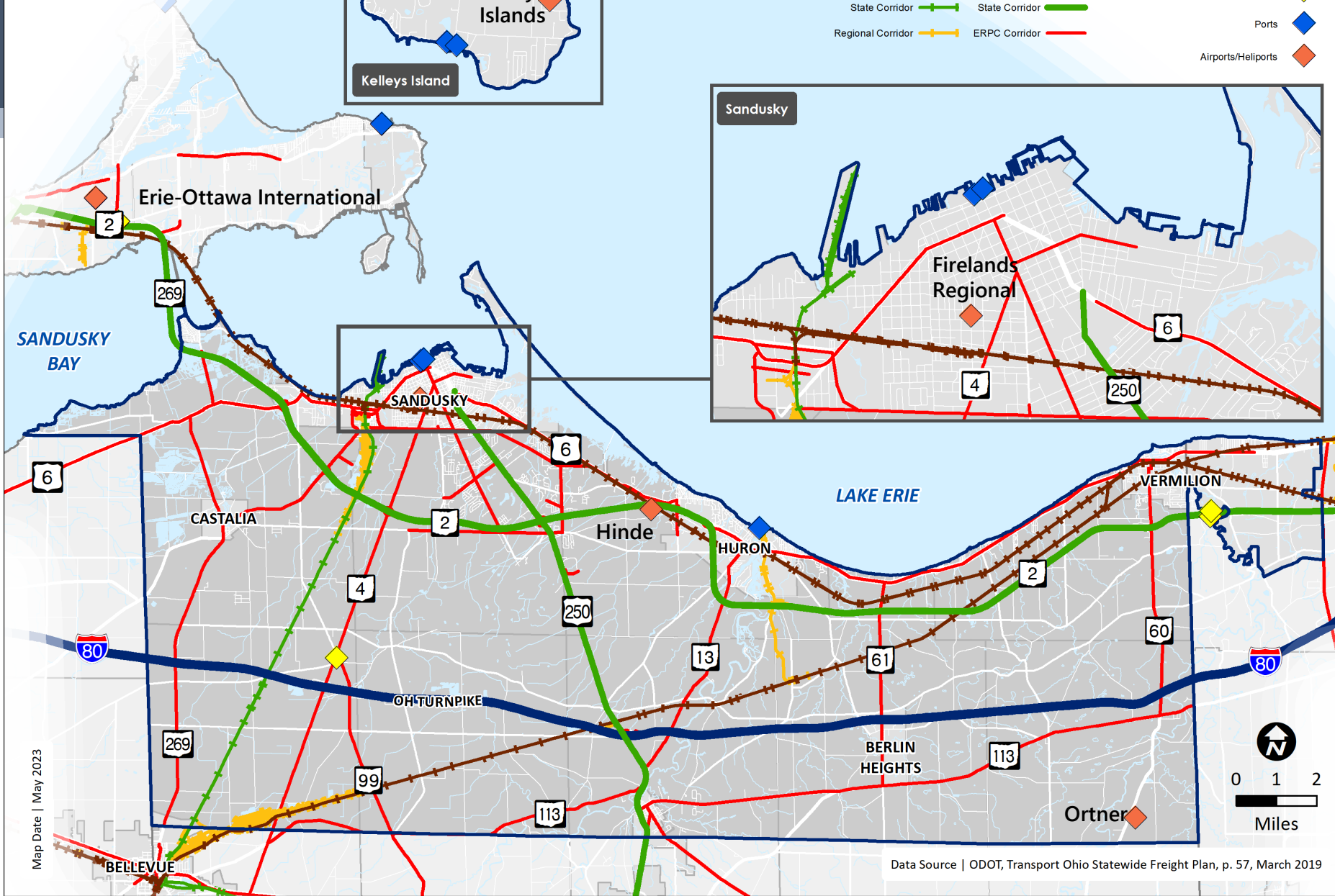
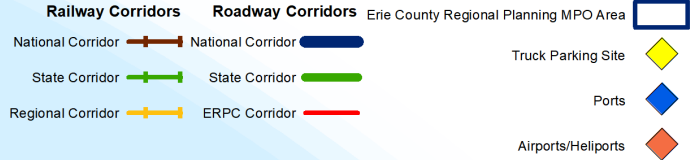






# 2023 Erie Regional Planning Commission MPO Freight Plan

## ERPC Core Freight Network



# ERPC Core Freight Network

A tool for

1. Planning and programming.
2. Public-private collaboration.
3. Integrating freight, land use and economic development.
4. Coordination with adjoining regions and ODOT.

### Counts/Mileage in the ERPC Region

Airports / Heliports	4
Ports	2
Regional Rail Corridor	4 miles
State Rail Corridor	13 miles
National Rail Corridor	60 miles
ERPC Roadway	189 miles
State Roadway Corridor	45 miles
National Roadway Corridor	26 miles
Truck Parking	1 site; 16 spaces

# Stakeholder Engagement

## Two-Phase Approach to Freight Plan Development

### Phase 1: Freight Plan Data Memorandum (2022)

- Memorandum as focal point for February 2023 Stakeholder Meeting
- Pivot from data to frame freight policy and identify priority investments

### Phase 2: ERPC MPO Regional Freight Plan (2023)

- MPO Adoption in July 2023



# Freight Advisory Committee

- **Formed December 2023;** 2<sup>nd</sup> meeting March 2024
- **Developing Governance Structure**
  - Will address strategic initiatives in future meetings
- **Activities**
  - Guest speakers
    - Roger Streiffert with TMACOG in March
  - Freight and industry field views
    - Site visit with local manufacturer, Summer 2024
  - Freight need/project inventory, evaluation, and prioritization
    - Review of Freight Plan and LRTP projects, Fall 2024
  - Expanding freight planning knowledge across sectors
- **Challenges** – developing the cross-section of public/private members
  - Expanding private members
  - Emphasizing participation
  - Making the linkage with transportation planning process
- **Early Successes** – engaged membership that is open to conversation on local freight planning
  - Expanding knowledge base on national trends and freight impacts

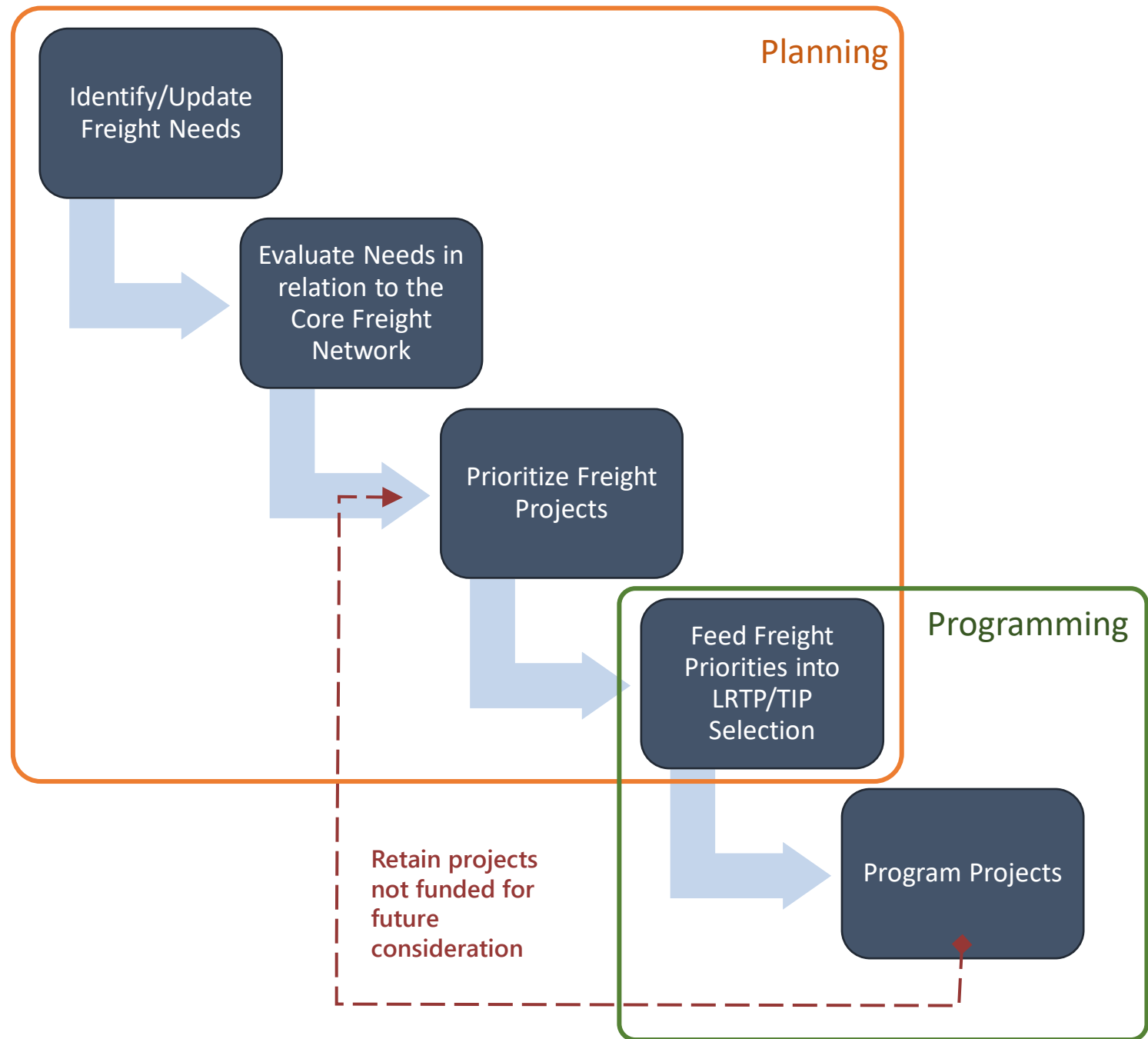
# Freight Planning & Programming

Planning identifies, prioritizes needs.

Programming selects needs for improvement.

Plan goals inform the process.

1. Land use and freight
2. Multimodal and intermodal
3. Freight mobility, safety, and operations
4. Regional planning capabilities
5. Freight awareness
6. Strategic partnerships and alliances



# Implementation Approach

## Planned Year 1 and Year 2 Activities

1. Implement an Annual Action Plan—to advance one or more strategic initiatives
2. Report Implementation Progress
3. Integrate Freight with LRTP Planning and TIP Programming
4. Consider New and Emerging Data, Trends, and Practices
5. Continue to Develop Freight Knowledge, Skills, and Abilities
6. Industry Outreach and Cross-Sector Education
7. Public Information and Awareness

## Year 1 in Practice

- **Freight Advisory Committee** formed and evolving
- **MPO Programming Scoring Review** to incorporate changes in MPO and integrate Freight
- **Interagency consultation** on freight planning process in expanding knowledge, skills and abilities
- **Industry Outreach** by field visits of area major freight handlers
- **Upcoming press release on FAC** and its impacts and importance to raise awareness

# Lessons and Opportunities

## Lessons

- **Leverage staff strengths**, even through staff turnover
- Planning as a **public-private endeavor**
  - Shared goals, different timelines
  - Discuss data and realities of goods movement
  - Value in involvement
- Early implementation – take **small first steps**
- **Education** in planning and in implementation – for planners, partners and stakeholders

## Opportunities

- **Public Awareness** for passenger and freight planning raised, evolving
- **MPO Board Awareness** for how freight impacts local transportation, land use, and economic development
- **Applications of CFN** to transportation planning – safety, congestion, truck parking
- **Freight Advisory Committee** as a built-in response team; partners who advocate for change

# Erie County Freight Plan Contacts

**Kevin Cannon, Transportation Planner**

Erie Regional Planning Commission &  
Metropolitan Planning Organization

• (419) 627-7652

[kcannon@eriecounty.oh.gov](mailto:kcannon@eriecounty.oh.gov)



**Keith Chase, Consultant**

Gannett Fleming, Inc.

• (717) 886-5296 | c (717) 418-2073

[kchase@gfnet.com](mailto:kchase@gfnet.com)

**Michelle Brummer, AICP, Consultant**

Gannett Fleming, Inc.

• (717) 886-5295 | c (717) 649-3165

[mbrummer@gfnet.com](mailto:mbrummer@gfnet.com)

