



MID-OHIO REGIONAL  
**MORPC**  
PLANNING COMMISSION

111 Liberty St., Suite 111  
Columbus, Ohio 43215  
[www.morpc.org](http://www.morpc.org)

**NOTICE OF A MEETING:  
CENTRAL OHIO BLUEWAYS STEERING COMMITTEE**

*IN-PERSON MEETING:  
MAY 8, 2024: 10:30 AM – 12:00 PM*

**AGENDA**

- 1. Welcome & Purpose**
- 2. Introductions**
- 3. Central Ohio Greenways Updates / Mapping Natural Assets Project**
- 4. Mission Statement and Vision Setting**
- 5. Central Ohio Blueways Working Groups**
- 6. Adjourn**

*Please Notify Lynn Kaufman at 614-233-4189 or [LKaufman@morpc.org](mailto:LKaufman@morpc.org) to confirm your attendance for this meeting or if you require special assistance.*

*The next Central Ohio Blueways Steering Committee meeting will be  
**August 14th, 2024 from 10:30 AM to 12:00 PM***

*This Meeting will be in-person; details to follow.*

**William Murdock, AICP**  
Executive Director

**Chris Amorose Groomes**  
Chair

**Michelle Crandall**  
Vice Chair

**Ben Kessler**  
Secretary

Mid-Ohio Regional Planning Commission

Central Ohio Blueways Steering Committee  
Attendance

---

May 8, 2024, 10:30 am

Members Present

Maria M. Conroy, The Ohio State University  
Doug Crandall, FACT  
Lisa Daris, Olentangy Paddle  
Laura Fay, Friends of the Lower Olentangy  
Watershed (FLOW)  
Zach Guthrie, City of Gahanna  
Haley Ingram, Metro Parks

Amy Meade, Keep Columbus Beautiful  
James Ramsey, Franklin County Engineer's Office  
J.M. Rayburn, City of Dublin  
Brock Sehen, Madison Soil & Water  
Conservation District  
Daniel Weis, T&M Associates

MORPC Staff Present

Tunazzina Alam

Lynn Kaufman

Jonathan Miller

Melinda Vonstein



# CENTRAL OHIO BLUEWAYS

**Steering Committee**

*May 8, 2024*



MID-OHIO REGIONAL  
**MORPC**  
PLANNING COMMISSION

# AGENDA



- WELCOME & PURPOSE
- INTRODUCTIONS
- CENTRAL OHIO GREENWAYS UPDATES / MAPPING NATURAL ASSETS PROJECT
- MISSION STATEMENT AND VISION SETTING
- WORKING GROUPS
- ADJOURN



# INTRODUCTIONS



NAME

POSITION

ORGANIZATION

WHAT'S ONE THING YOU HOPE TO IMPACT  
THROUGH CENTRAL OHIO BLUEWAYS?





# CENTRAL OHIO GREENWAYS

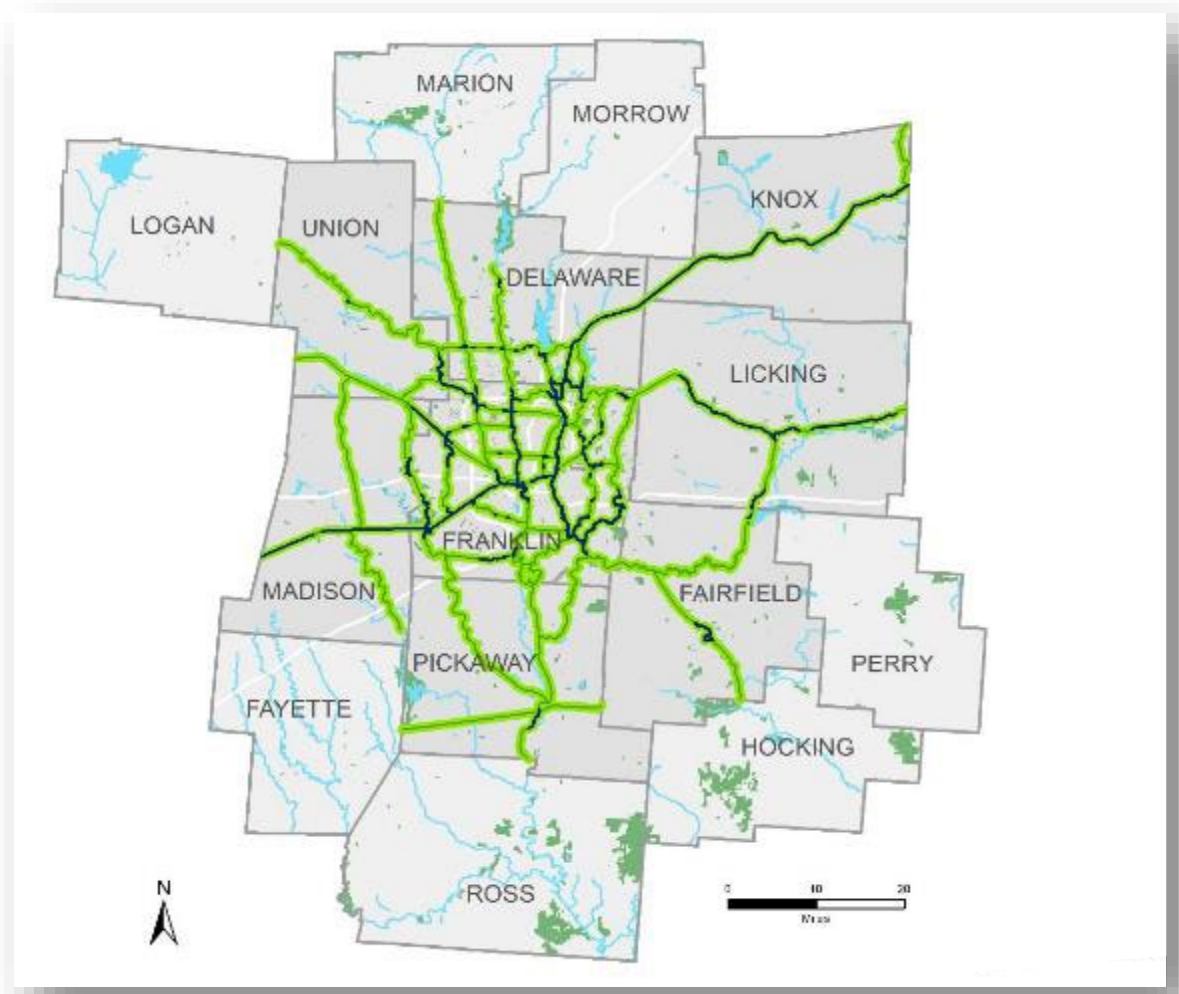
Central Ohio Blueways Steering Committee Meeting  
May 8, 2024



MORPC



# CENTRAL OHIO GREENWAY— Advancing access, connectivity, health, and more



## VISION

*A world-class network of trails easily accessible to every Central Ohioan*

## MISSION

*Increase Greenways trails mileage and usage for recreation and transportation needs*



**MORPC**

# 2019 CLARITY REPORT



MORPC

Clarity Report for Feasibility and Readiness, 2019

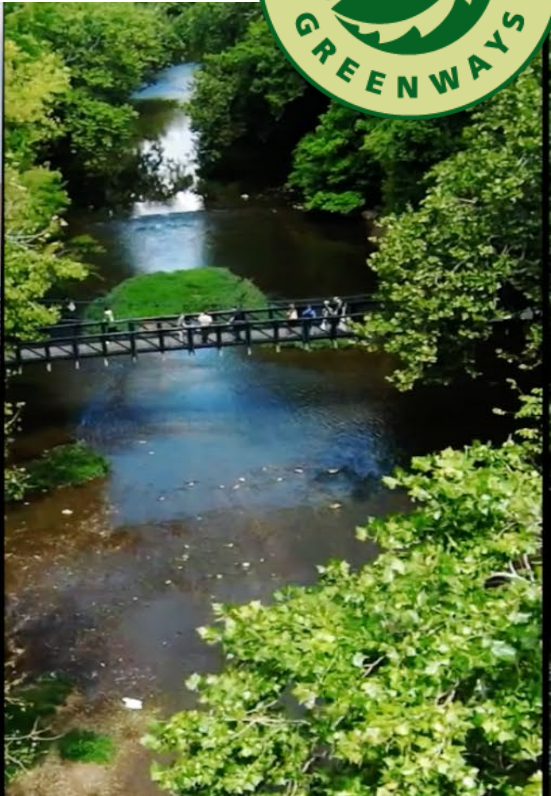
*“In three words, how would you describe the work of Central Ohio Greenways and MORPC?”*







# CENTRAL OHIO BLUEWAYS: opening access to the region's waterways



MORPC



# GREAT AMERICAN RAIL TRAIL

This independent economic analysis finds that the Great American Rail-Trail® could generate annually:

**25.6M TRIPS**

**\$229.4M**  
IN VISITOR SPENDING

**2,500**  
NEW JOBS

**\$22.8M**  
IN NEW TAX REVENUE

**\$104M**  
IN LABOR INCOME

**\$161M**  
GDP CONTRIBUTION



# ENCOURAGING TRAIL USE



## Get Moving. Check In. Get Rewards.

Experience Columbus has teamed up with the Mid-Ohio Regional Planning Commission for a great outdoor trail pass program to enjoy with friends or family. These trails are perfect for hiking, biking, jogging, and even paddling! Try them all now—what are you waiting for?

Check out these links for more information and directions!

- [Central Ohio Greenways Map](#)
- [Central Ohio Biking Map](#)
- [Rapid 5](#)

### COLUMBUS OUTDOOR TRAILS PASS



#### Hike, Bike and Paddle Trail

- Mobile exclusive
- Instantly delivered via text and email
- No apps to download
- Experience the nature of Central Ohio

[Explore Now](#)



MORPC



# CENTRAL OHIO GREENWAYS: opening access to the Communities



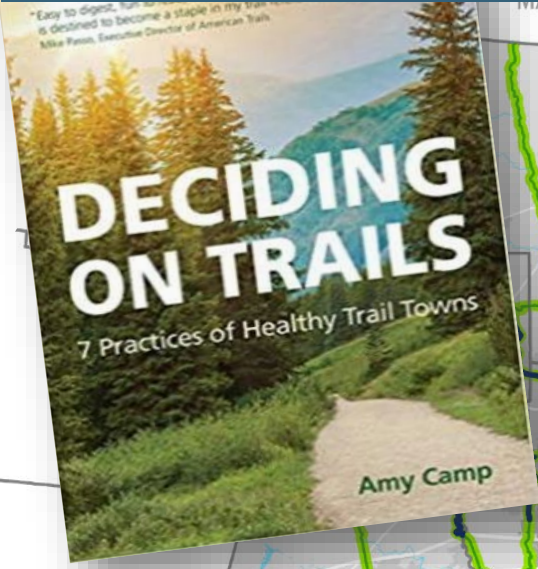
MORPC





# TRAIL TOWNS

*“To be a Trail Town is to make the decision to pay attention to trails” – and invest in them.*



- Mt Vernon
- Centerburg
- Sunbury
- Westerville
- Easton
- Bexley
- Columbus Neighborhoods
- London



MORPC



# COG WAYFINDING STRATEGY



## WAYFINDING PRINCIPLES

With wayfinding defined, it is necessary to identify the principles that will guide the application of this wayfinding strategy. A quick online search for "wayfinding principles" yields many different examples, with some common themes. The utility of each has been evaluated and synthesized into the following original format. Notably — each principle is expressed as if spoken by a trail user, again centering what they need to have an exceptional trail experience.

### DON'T MAKE ME THINK!

Wayfinding elements will be predictable, consistent, and simple to understand.

### KEEP ME MOVING!

Wayfinding elements will be at the proper scale for cyclists, walkers, and those using mobility devices.

There will be clarity at all decision points.

Trail users will not need to stop for any reason unless desired.

### MAKE IT MEMORABLE!

Memorable places will support the creation of robust mental maps.

"Wayfinding elements" will include many types of environmental cues, including public art.

### HELP ME CONNECT!

Wayfinding elements will allow trail users the opportunity to connect with each other and with communities' people, places, and cultures.

### MEET ME WHERE I AM!

Wayfinding elements will feature inclusive design and universal icons that are accessible to all users.

Wayfinding elements will prioritize the needs of new trail users, and the needs of trail users over providers.

### ANTICIPATE MY NEEDS!

Wayfinding elements will provide users with the right information, at the right time, in the right format.

Trail users will have the assets they need, when they need them.





MORPC

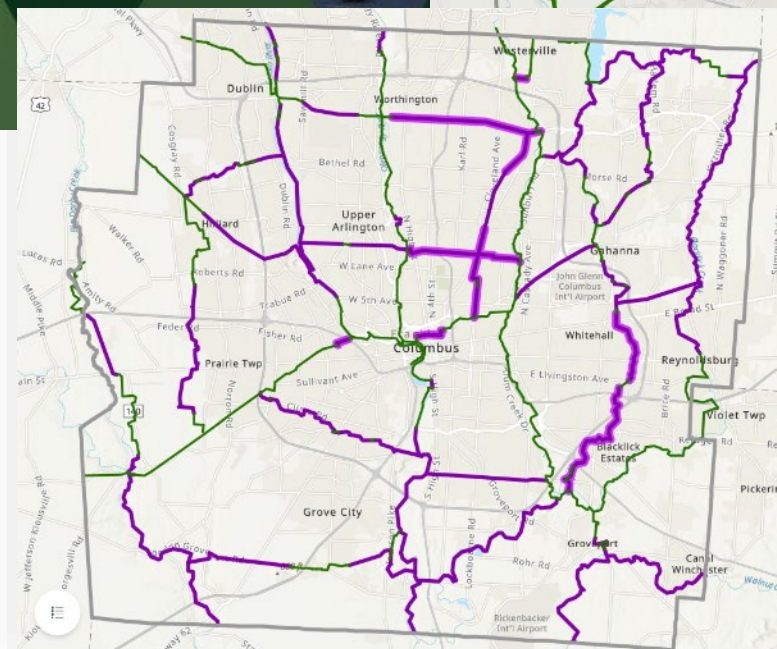
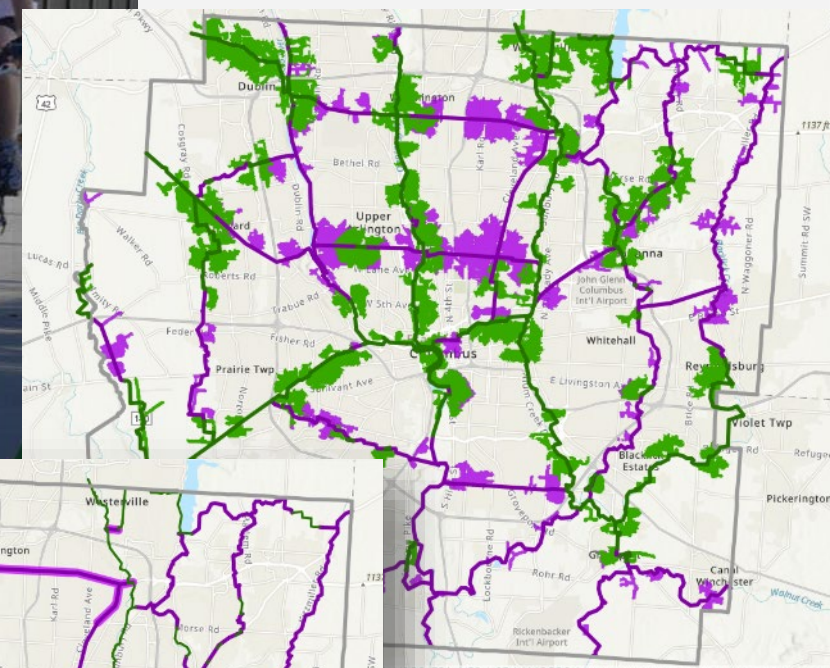


# Central Ohio Greenways

## Regional Trail Vision Prioritization

Mid-Ohio Regional Planning Commission

January 20, 2021



### Connectivity

Low Stress Roads

Existing Trails

Existing Access Points

Proposed Access Points

Bus Stops

Barriers



### Health / Environment

Acres of Parks

Miles of Riparian Corridor

Number of Crashes



### Social Equity

Poverty

Unemployment

Race

Disability

Population

Zero Car Household



### Economy

Jobs

Education Facilities

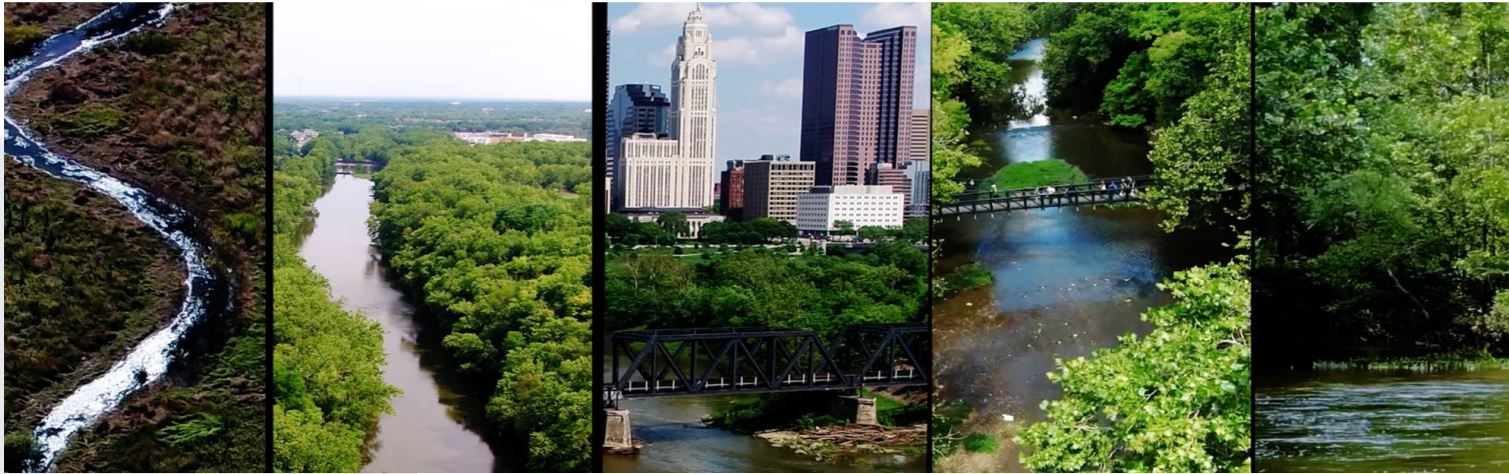
Cultural Amenities





# CENTRAL OHIO GREENWAYS

## Mapping Natural Assets



### PROJECT PURPOSE:

Summarize analyze watershed data to create an indexed score of environmentally sensitive land. This index will support informed development decisions that encourage equitable access to our region's natural resources for active transportation & recreation while also protecting the biodiversity of our region's river corridors.



MORPC

**THE LOWER OLENTANGY WATERSHED'S GREENSPACE PLAN**

Funded thanks to The Columbus Foundation's Green Fund  
May 2020

**FLOW**  
Friends of the Lower Olentangy Watershed  
3528 N High Street, Suite F, Columbus, OH 43214  
www.olentangywatershed.org

photos courtesy of ESN Howard

GREENSPACE TIER	ACREAGE
1	3,136
2	6,041
<b>TOTAL 1 &amp; 2 ACREAGE</b>	<b>9,177</b>
3	17,564
4	40,303
5	21,830
<b>TOTAL</b>	<b>88,874</b>

Tier 1: Areas most critical with respect to natural resources\*



Tier 5: Areas less critical [relatively to other areas] with respect to natural resources

<https://www.olentangywatershed.org>



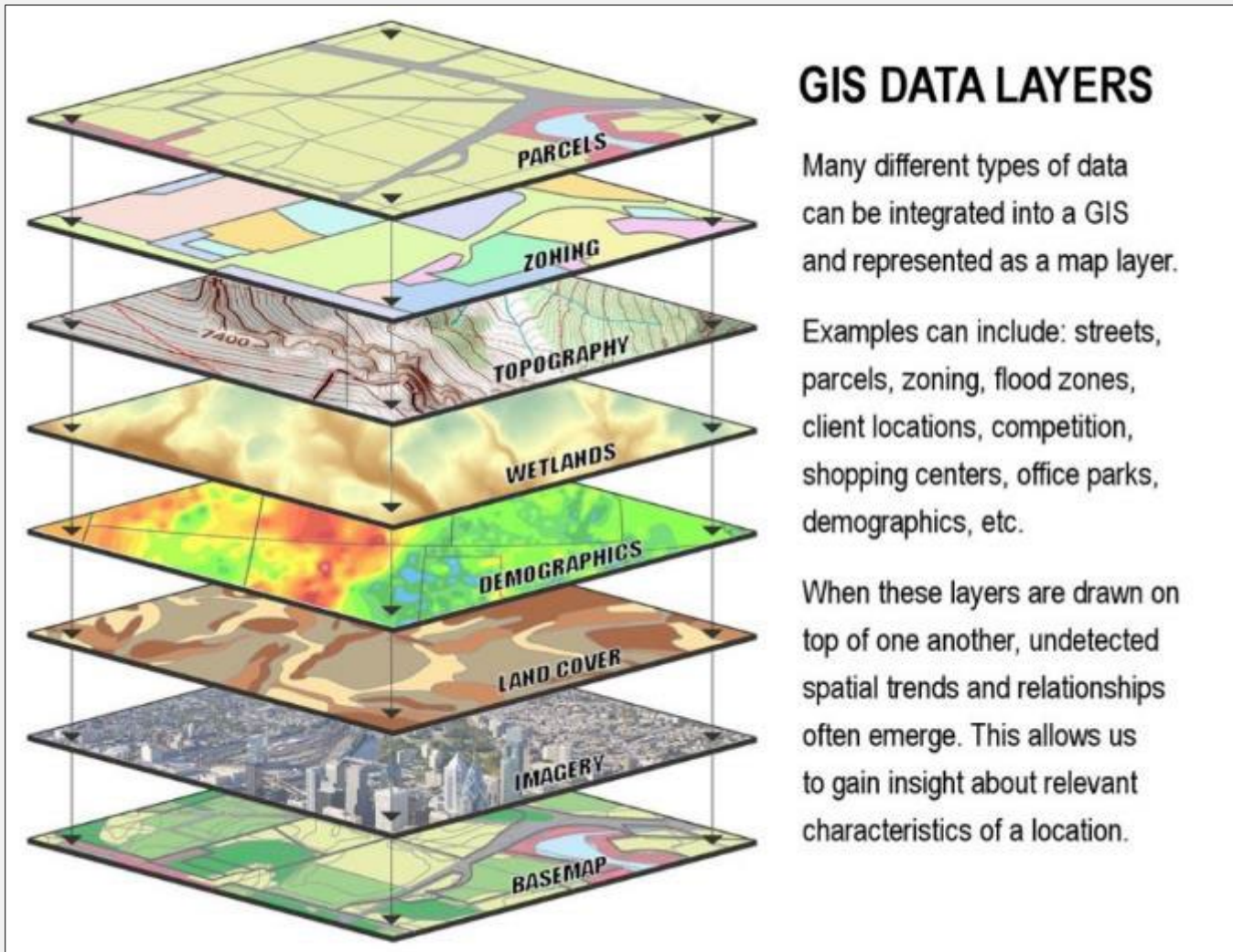
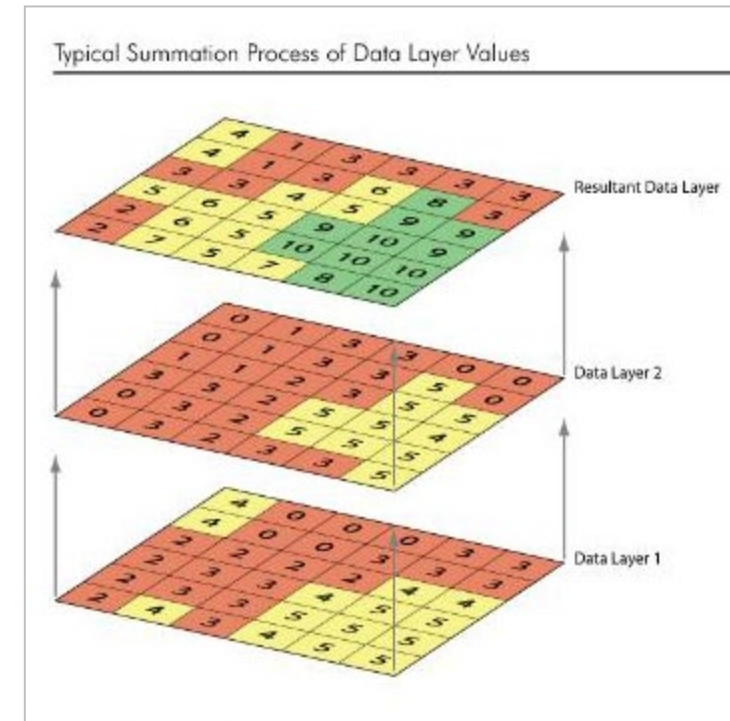


Image credit: gis-consultant.com

## GIS: (Geographic Information System)

- GIS is a computer-based technology developed around geo-spatial information (having a location on the earth's surface).
- GIS allows for data development, management, and analysis as well as the presentation of the data in a variety of **visual** formats including **maps, database tables and charts.**

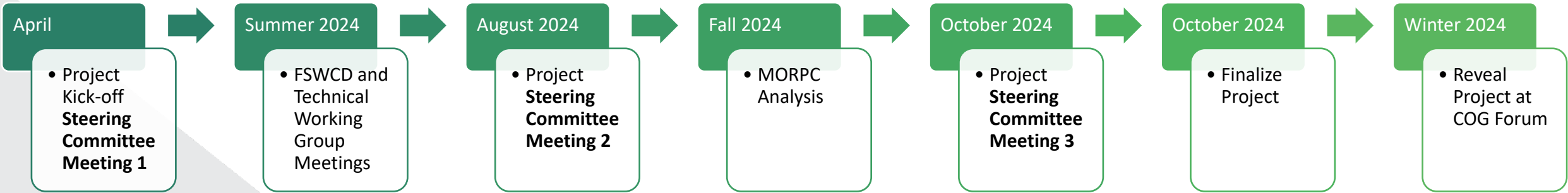




# CENTRAL OHIO GREENWAYS

## Mapping Natural Assets

### Project Timeline



# Franklin County Natural Resources Assessment

## Introduction and Approach

Analysis Layers	Rational
<b>Landscape</b>	
Canopy_Buffers	Created buffers around existing forested areas to promote creation of additional wooded lands and increase the size of existing stand and to explore linkages between features.
Canopy_Acres_SD	Scores based on Standard Deviation of the mean Acreage. The larger the tract of forest, the more important it is to protect.
<b>River</b>	
Floodplain_Buffer	Everything within the 500 yr floodplain for protection of stream corridor and increasing flow events Floodplain merged - Floodway, 100yr, 500yr and associated codes
Scenic_River_Buffer	ORC Section 1547.82 requires the review and approval of publicly-funded projects within a 1,000-foot corridor of a designated Wild, Scenic or Recreational River area outside of municipal corporation limits. Examples of these types of projects (roads, bike trails, sewer lines) are shown on the left side of the above graphic.  Private land is not subject to any review or approval under the Scenic Rivers law. ORC Section 1547.81 provides for the protection of all private land uses such as home building, logging, grazing, agriculture, etc.
<b>Tributary</b>	
Streamway_Buffer	Established guidelines from OEPA Rainwater and Land Dev Manual based on streamway size to accommodate the meader belt Streamway width = 147 (Drainage Area in square miles)0.38 (Approximately 10 channel widths)
Construct_Permit_Buffer	Protection of tributaries based type of stream as defined in Olentangy Construction Permit - Intermittent & Emphemeral = 30 ft/ Perennial = 80 ft /Mainstem = 100 ft
<b>Water Bodies</b>	
Wetland_Buffer	Protect natural feature - established guidelines for buffers - re-established guidelines from OEPA Rainwater and Land Dev Manual (Cat 1- 25ft, Cat 2- 75ft, Cat 3- 120ft) Scored as if all wetlands are cat 3



For each of the natural resources listed below, please indicate how important you believe the natural resource is to the Franklin County Natural Resources Assessment.

### Wetland Locations

- 5 - I consider this variable very important
- 4
- 3
- 2
- 1 - I do NOT consider this variable very important

### For potential follow-up questions we may have:

- Please check here if you consider yourself well versed with this natural resource.

Analysis Layers	Rational
<b>SOURCE WATER PROTECTION - Delco / Etc.</b>	
Ground_Water_Protection_Zones	Deemed critical zones
Corridor_Management_Zone	Deemed critical zones
Watershed_Management_Zone	Deemed critical zones. Emphasis on protecting drinking water
<b>ODNR - Natural Heritage - poly</b>	
ODNR_NHD_Flora_Fauna_STATESTAT	Deemed critical catagories
ODNR_NHD_Flora_Fauna_FEDSTAT	Deemed critical catagories
ODNR_NHD_Geological_Features	Deemed critical category
<b>SOIL ANALYSIS - poly</b>	
Hydric_Soil_Ratings	Looks at the percentage of hydric inclusions in all the soil map units. Rather than just designating the various soil types as being hydric or not, the percentage gives a much better comparison of the various map units/soil types relative to each other. The more hydric a soil, the better potential for wetland development/protection from urbanization. hydric soils are more easily developed into wetlands
<b>DRASTIC - Groundwater Pollution Potential - poly</b>	
DRASTIC_Ratings	Rating takes into account: Depth to Water Table, Net Recharge, Slope, Soil Media Etc. Used the recommended rankings range provided by ODNR to designate the relative potential for groundwater pollution – the more potential for groundwater pollution, the more we want to protect the area. Scored as a potential for Greenspace to protect ground water resources.
<b>Existing Protected Lands</b>	
Protected_Areas	Intent: To highlight the locations surrounding existing wooded areas with an emphasis with the intent of linking areas together.

# THANK YOU!

## MELINDA VONSTEIN, AICP

*Central Ohio Greenways Program Manager*

**Mid-Ohio Regional Planning Commission**

T: 614.233.4222

[Mvonstein@morpc.org](mailto:Mvonstein@morpc.org)







What should be the MISSION of a Central Ohio Blueways Program?

## Expand Access

## Environmental Stewardship

Coordinate and Support Local Partners and Organizations

Develop Access Development and Maintenance Guidelines

Unify Signage, finding, and Branding

Provide Toolkits for Preservation and Promotional Usage

Promotes Safe, Legal, and Ethical Access



# MISSION STATEMENT AND VISION SETTING



MORPC

What make a Central Ohio Blueways Program a “success” in the future?



# MISSION STATEMENT AND VISION SETTING



MORPC

What should be the VISION for a Central Ohio Blueways Program?

Unified network of protected waterways

## Shared goals and outcomes

Highlighting the differences of each Blueway Corridor

Have the healthiest waterways in the nation

Safe, fun, and natural

Provide sustainable, accessible, and engaging water-based recreational opportunities

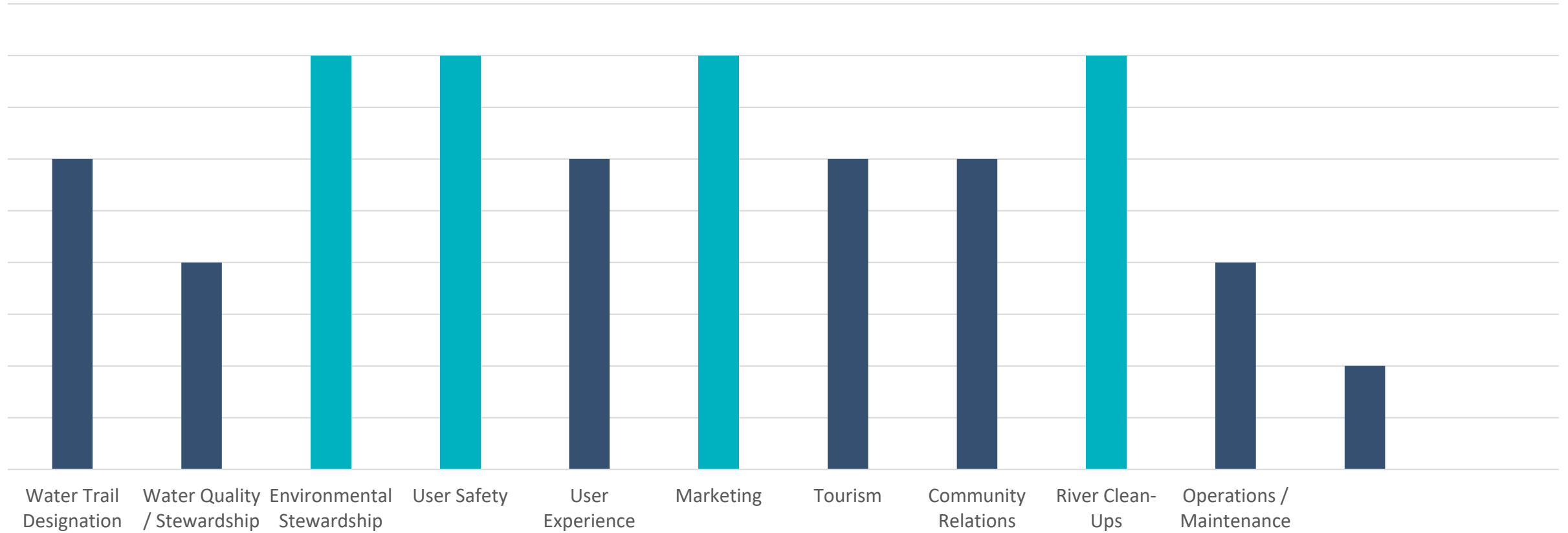
Foster deep connections between people and the region's waterways

# WORKING GROUPS



MORPC

Which program areas should be included as WORKING GROUPS?





# WORKING GROUPS



MORPC

Which program areas should be included as WORKING GROUPS?

Environmental  
Stewardship / River  
Clean-Ups

Marketing / Tourism

User Safety /  
Experience

Water Trail Designation

# WORKING GROUPS



MORPC

Which program areas should be included as WORKING GROUPS?



# CENTRAL OHIO BLUEWAYS UPDATES



MORPC

## INTERACTIVE MAPPING

- NEW INTERACTIVE MAPPING WEB MAP
- ADDITIONAL INFORMATION
  - ACCESS POINT AMENITIES
  - NEARBY POINTS OF INTEREST
- STILL NEEDED
  - PORTAGE ROUTES
  - UPDATED HAZARDS





# CENTRAL OHIO BLUEWAYS UPDATES



MORPC

## RIVER CLEAN-UPS

- ENVIRONMENTAL STEWARDSHIP WORKING GROUP
- PARTNER WITH KEEP COLUMBUS BEAUTIFUL
- DETAILS
  - OCTOBER 12<sup>th</sup> (SATURDAY)
  - 8 LOCATIONS



# NEXT STEPS & ADJOURN



MORPC

## NEXT STEPS

- WILL RECEIVE A FINAL FORM/SURVEY
  - REFINED MISSION & VISION
  - WORKING GROUP SIGN-UPS
  - RECOMMENDATIONS FOR ADDITIONAL WORKING GROUP PARTICIPATION
- SCHEDULE RECURRING MEETINGS FOR WORKING GROUPS
- DEVELOP WORKING GROUP GOALS

NEXT CENTRAL OHIO BLUEWAYS  
STEERING COMMITTEE MEETING:

**AUGUST 14TH,  
2024**