



MID-OHIO REGIONAL
MORPC
PLANNING COMMISSION

111 Liberty St., Suite 100
Columbus, Ohio 43215
www.morpc.org

**NOTICE OF A MEETING
CENTRAL OHIO GREENWAYS TRAIL DEVELOPMENT – URBAN WORKING GROUP
MID-OHIO REGIONAL PLANNING COMMISSION**

REMOTE MEETING

February 20, 2025, 9:30 am

AGENDA

1. Welcome & Introductions

Melinda Vonstein introduced the meeting and explained the focus on urban trails in Franklin County. She also mentioned the alternating focus on urban and rural trails in future meetings. The March meeting will be on rural trails; the April meeting will be about urban trails, and so on to allow participants to choose which meetings to attend based on their interests.

2. Goal Setting 2025

- ODOT Alignment -- Aligning the Regional Trail Vision with ODOT State and US Bike Routes. This includes making these routes feel more comfortable, safe, and accessible for all ages and abilities, and more trail-like.
- State Parks Connection – connecting the trail network to state parks within the 15-county footprint, such as Indian Lake State Park, Delaware, Alum Creek, Buckeye Lake, and Deer Creek. The Central Ohio Greenways website now includes layers showing the US and State Bike Route System and state parks.
- Urban/Rural Connections – extending and leveraging trail-building activities in Franklin County into rural areas. State and Federal funding might prioritize rural communities in the coming years, making it a good opportunity to focus on urban/rural connections.
- Gateways of Regional Significance –identifying Gateways of Regional Significance, which are major trailheads that exist or should exist in the future. The Trail Towns Working Group is creating an official definition for these Gateways, and the Group will collaborate to identify their locations on the Regional Trail Vision.

3. US and State Bike Routes

Staff and Members discussed the importance of aligning the Regional Trail Vision with State and US bike routes, and the potential for suggesting new alignments to make routes safer and more comfortable for bicyclists.

4. COG Grant Funded Projects

a. Central Ohio Cycling Guide & Bikeways Map Update

Melinda announced that MORPC received an award from ODOT to update the regional bike map and create a Central Ohio Cycling Guide, which will include an

William Murdock, AICP
Executive Director

Chris Amorose Groomes
Chair

Michelle Crandall
Vice Chair

Ben Kessler
Secretary

updated bike level of stress map, a 15-county trail map geared towards trail users and entry-level users, and seven to ten curated cycling routes presented in a subway-style map. The Guide will also include a Trail Town Story Map template, allowing any Trail Town Community to showcase their trail and visitor experience. These story maps will be hosted in one place for easy access.

b. **Mapping Natural Assets**

The project, conducted in partnership with Franklin Soil and Water Conservation District and funded by the Columbus Foundation, summarizes environmental data to create a tiered index of environmentally sensitive land in Franklin County. The project considered various factors such as soil erosion, invasive species, and tree canopy. The resulting map shows darker areas as more environmentally sensitive and lighter areas as less sensitive. While the project currently focuses on Franklin County, there is interest from other counties to do something similar. Staff is discussing potential projects with Licking County and is open to finding funding sources for expanding the project to other counties.

5. Regional Projects Round Table

- Member Schamp announced the opening of the Hilliard Recreation and Wellness Campus, which includes new trails connecting to various parks and activity centers. She encouraged people to visit and explore the area.
- Staff and Member Oberg discussed the upcoming Celebrate Trails Day event and the need for volunteers to help organize it in partnership with Green Columbus.

6. COG Forum Planning

Melinda announced the upcoming COG Forum and the possibility of an in-depth workshop on identifying gateways of regional significance. She invited participants to share ideas and updates for the Forum.

7. Adjourn

Please notify Lynn Kaufman at 614-233-4189 or LKaufman@morpc.org to confirm your attendance for this meeting or if you require special assistance.

The next Central Ohio Greenways Trail Development Working Group Meeting

Will be March 13, 2025, at 9:30 am.

This Meeting will be held remotely; details to follow.

Mid-Ohio Regional Planning Commission
Remote Meeting


Central Ohio Greenways Trail Development - Rural
Working Group Meeting

February 20, 2025

Members Present

- Mike Andrako, Franklin County Engineer's Office
- Jody Dzurainin, Ohio to Erie Trail
- Terry Fischer, Bike Buckeye Lake
- Beth Hugh, Korda Nemeth Engineering
- Adrienne Joly, City of New Albany
- Dan Kaderly, Quarry Trails Metro Park
- Michael Lentz, City of Hilliard
- Eric Oberg, Rails-to-Trails Conservancy
- Andrew Overbeck, MKSK
- Lexi Petrella, Alta Planning + Design
- Tami Ruhl, Knox Public Health
- Letty Schamp, City of Hilliard
- Nina Schultheis, Strand Associates
- Zach Sunderland, COTA
- Julie Walcoff, Toole Design
- James Walker, Marion County Regional Planning Commission

Staff Present

- Lynn Kaufman
 - Melinda Vonstein
- 



CENTRAL OHIO GREENWAYS Trail Development Working Group

February 20, 2025



MORPC

TRAIL DEVELOPMENT WORKING GROUP 2024



GOALS

- 1) Maintain the Regional Trail Vision
 - Review opportunities to align State & US Bike Routes
 - Identify Connections to State Parks (rural)
 - Focus on Urban to Rural Connections
 - Identify Gateways of Regional Significance
- 2) Support the “Central Ohio Cycling Guide” Steering Committee
- 3) Detours & Closures Technical Assistance
- 4) Advance the COG Wayfinding Strategy
- 5) Plan Greenway Planning Studio Workshops
- 6) COG Forum Agenda Planning

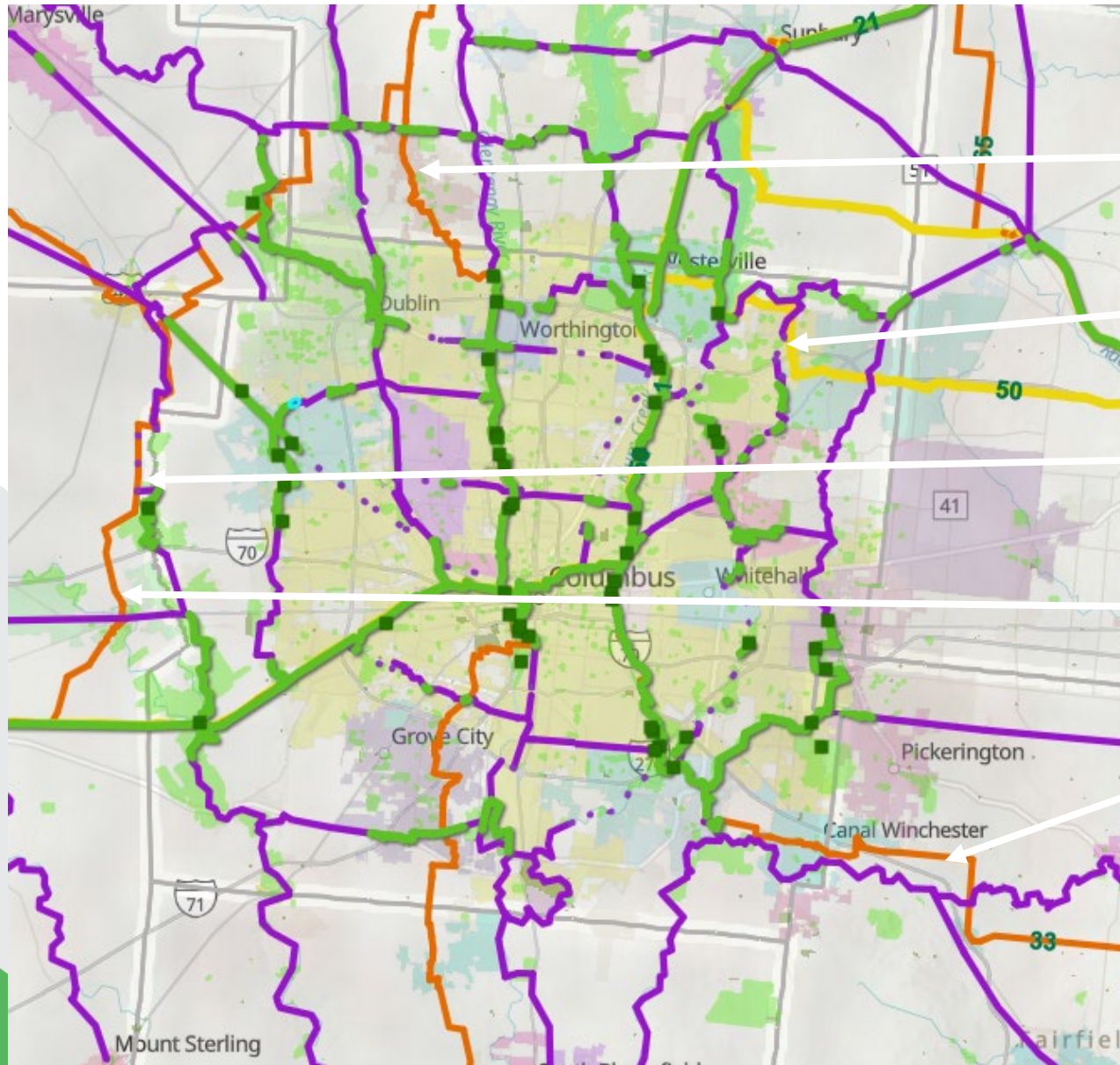
MEETING DATES

January 7: 2:00 – 3:00 (Special Meeting)
January 23: 9:30 – 10:30 (Rural)
Feb 20: 9:30 – 10:15 (Urban)
March 13: 9:30 - 10:30 (Rural)
April 10: 9:30 - 10:30 (Urban)
May 15: 9:30 – 10:30 (Rural)
June 5: 9:30 – 10:30 (Urban)
July 17: 9:30 – 10:30 (Rural)
August 21: 9:30 – 10:30 (Urban)
September 18: 9:30 – 10:30 (Rural)
October 16: 9:30 – 10:30 (Urban)
November 13: 9:30 – 10:30 (Rural)
December 11: 9:30 -10:30 (Urban)



MORPC

US & STATE BIKE ROUTE ALIGNMENT



- SBR 47
- USBR 50
- SBR 39
- SBR 36
- SBR 33



MORPC

Central Ohio Cycling Guide




- Bike Level of Stress Map
- 15-County Trail Map – to include a subway style map showcasing 7-10 curated cycling routes
- A Trail Town Story Map Template




MORPC

DETOURS & CLOSURES



Central Ohio Greenways Detours & Closures Best Practices

Encouraging development of the Central Ohio Greenways Regional Trail Network with safe, accessible, and welcoming detours & closures best practices



Detour Planning Checklist

- 1. Assess
- 2. Report
- 3. Design Detour
- 4. Implementation
- 5. Trail Re-opening

STEP 1: ASSESS THE DURATION & IMPACT

Consider the following when assessing the closure: trail use; duration; availability of surrounding walking & biking infrastructure; and nearby destinations

Sample assessment: *The six-month closure of "Green Trail" will impact a significant number of commuters. There is a parallel protected bike lane on "Blue Blvd" that that is a 1/2 mile from the trail that could be used by many trail users to access the major job center. Coordination with our neighboring jurisdiction, "Yellow Town" will be needed as the protected bike lane is partially in their jurisdiction. This is expected to be a long-term, high-impact closure.*

STEP 2: REPORT CLOSURE

Short-term Closures (7+ days notice)
Hourly, and Low Impact Closures (24+ hours notice)

- Make a post on your local social media accounts
- Contact Franklin County Metro Parks (for Metro Parks maintained trails) to submit a text alert.

Long-Term and High Impact Closures (30+ days notice)

- Email COG@morpc.org to request a post on CentralOhioGreenways.com/alerts
- Contact known impacted partners
- Consider submitting updates to Google Maps (Refer to the COG Wayfinding Strategy, page 192)

CLOSURE DEFINITIONS

Long-Term: Those lasting more than one month.

Short-Term: Those lasting more than 24 hours, but less than one month.

Hourly: Those lasting less than 24 hours and have minimal impact on trail users.

High-Impact: Those lasting a short period of time but impacting a large number of people. e.g. Alum Creek, Olentangy

HOW DO TRAIL USERS ACCESS THE MOST UP TO DATE TRAIL ALERTS?

- CentralOhioGreenways.com/alerts
- To sign-up to get text alerts on your cell phone text "Greenways" to [1-781-728-9542](tel:1-781-728-9542) (for metro parks-maintained trails only)
- Follow local trail manager, park district, and trail user group social media accounts.

STEP 3: DESIGN THE DETOUR

Detours should provide a similar level of comfort to the trail that is being closed. Sometimes this may require:

- a temporary on road closure; or
- routing onto a sidewalk.

If a similar level of comfort may not be provided, share safety concerns with cautionary signage and digital communications.

DETOUR DESIGN & PLANNING ASSISTANCE

For long-term and high-impact closures, MORPC staff and the COG Trail Development Working Group may be engaged to provide detour planning assistance and facilitate collaboration with relevant partners.

This may include, when relevant:

- A meeting with impacted jurisdictions
- Maintenance of Traffic recommendations that follow MUTCD requirements and "COG Wayfinding Strategy"
- Temporary infrastructure recommendations such as protected bike lanes and barricades
- Communications tools, such as a public facing detour map, social media post, and post on the CentralOhioGreenways.com "Alerts" page

To request assistance at least 30 days in advance, email an assessment from Step 1 to COG@morpc.org.

STEP 4: IMPLEMENTATION OF DETOUR

Local jurisdictions are responsible for implementing the detour. This may include setting barricades, signage, and pavement markings.

MORPC staff can support communication efforts on social media and CentralOhioGreenways.com.


STEP 5: TRAIL RE-OPENING

Once the trail is open and the detour is no longer needed, alert users, COG staff, and adjacent jurisdictions to the reopening.

- Alert stakeholders including, COG@morpc.org, trail users through relevant social media accounts, and other stakeholders
- Update permanent signage, if necessary

BEST PRACTICE

A long-term trail detour at The Ohio State University was signed with trail stickers and a green dashed line that made following the route a seamless experience.



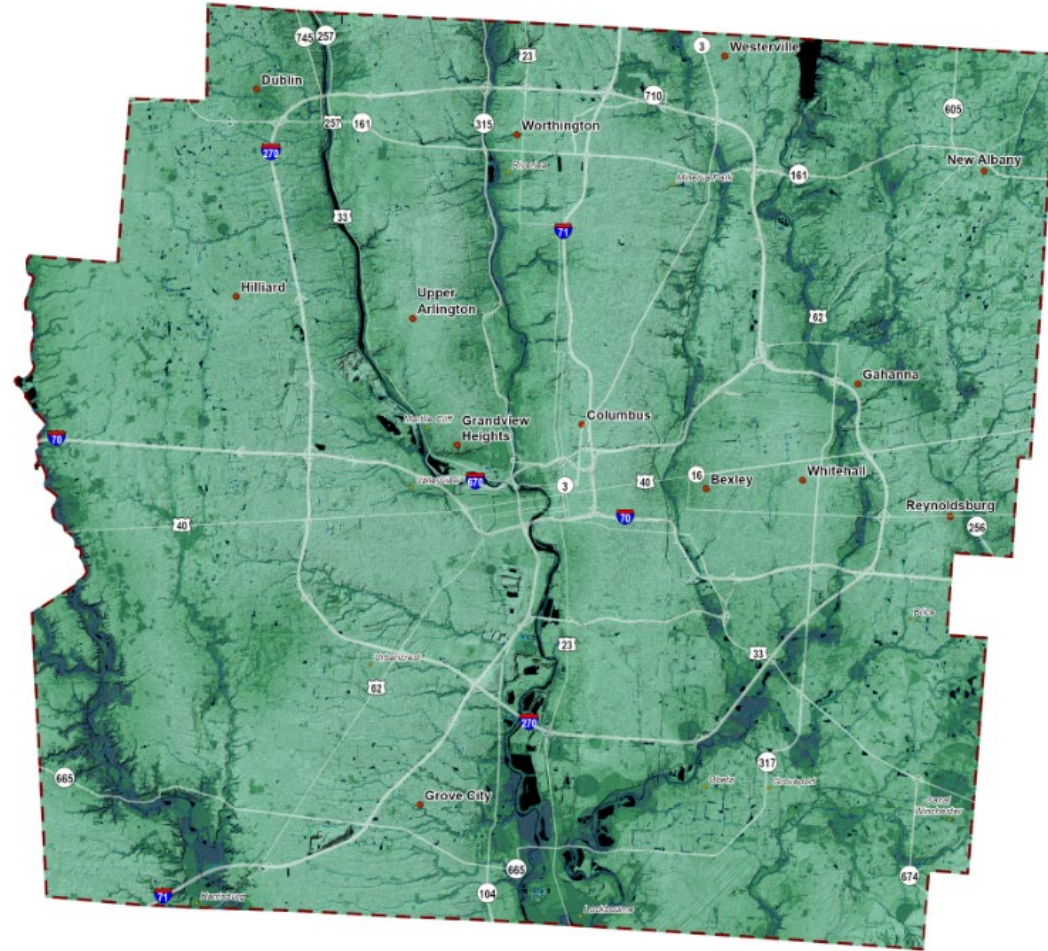
For more information, visit:
www.centralohiogreenways.com
Central Ohio Greenways
centralohiogreenways

Melinda Vonstein, AICP
Central Ohio Greenways Studio Lead
mvonstein@morpc.org



MORPC

Mapping Natural Assets



MORPC

Regional Round Table – Project Updates And COG Forum Planning



MORPC

THANK YOU!

MELINDA VONSTEIN, AICP

Central Ohio Greenways Program Manager

Mid-Ohio Regional Planning Commission

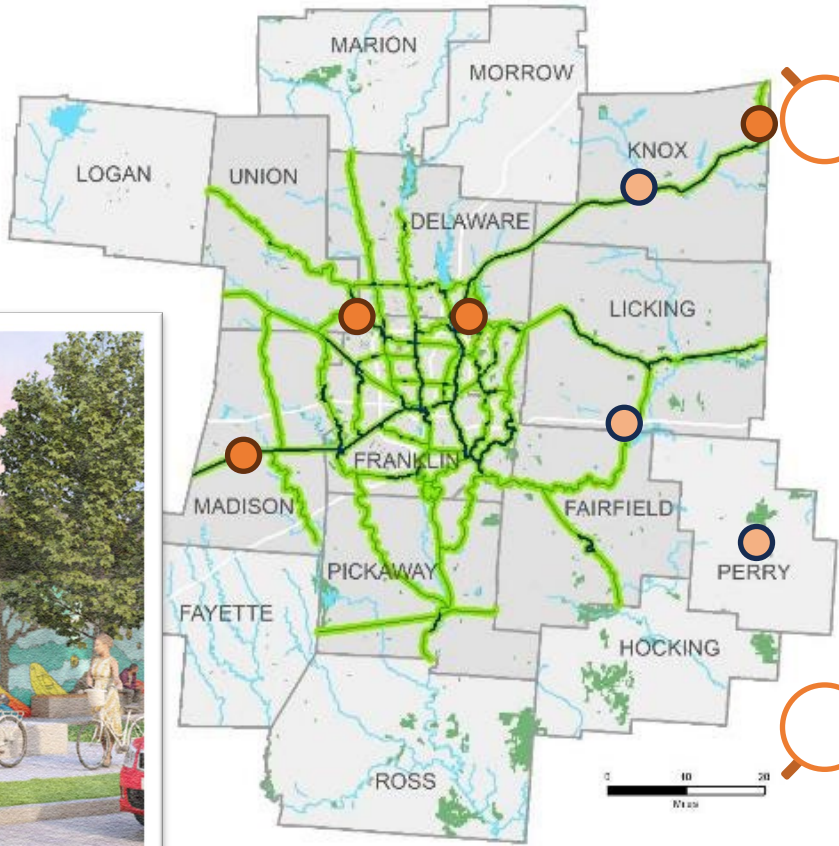
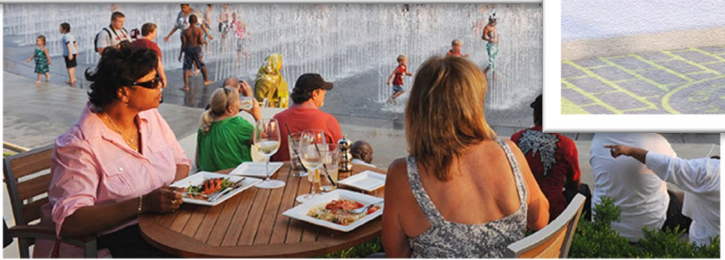
T: 614.233.4222

Mvonstein@morpc.org



GATEWAYS OF REGIONAL SIGNIFICANCE

A Gateway of Regional Significance is a premier trailhead located along a Trail of Regional Significance that provides and/or connects trail users to amenities, services, and information necessary to navigate the trail system.



- Westerville
- Howard
- London
- Dublin
- Village of Shawnee
- Buckeye Lake
- Mt Vernon



MORPC