



**WORTHINGTON, OHIO**

# TAC Member Spotlight

April 2, 2025





# WORTHINGTON OVERVIEW

- Founded - 1803
- Incorporated as Village - 1835
- Incorporated as City - 1954
- 5.55 Square Miles
- Population - 14,786 (2020 Census)
- 167 Lane Miles
- Council-Manager Government
  - Seven at-large Council Members
  - City Manager - Robyn Stewart



# NORTHEAST AREA PLAN

*“The Northeast Area Plan is a community supported vision that embraces the principles of innovation and ecology to transform the Northeast Area of Worthington from an industrial zone into a future-forward Eco Innovation District.”*



- Adopted by City Council on July 15, 2024
- Focused on the Northeast Gateway, Huntley Road, and Proprietors Road corridors.





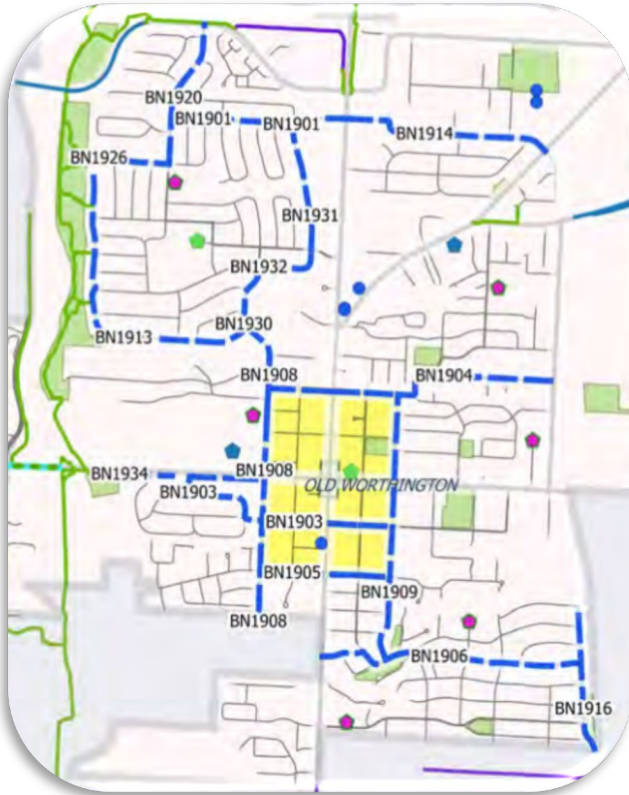
# COMPREHENSIVE PLAN REFRESH

- Full update of Worthington's 2005 Comprehensive Plan
- Projected adoption in early 2026
- Increased focus on infrastructure considerations
  - Existing and Future V/C ratios
  - Safety Hot Spots (Vehicle and Vulnerable Road users)
  - Multi-modal opportunities
  - Utility impacts from land use changes



CITY OF WORTHINGTON, OHIO  
**COMPREHENSIVE PLAN UPDATE**  
& 2005 STRATEGIC PLAN FOR WORTHINGTON

# BICYCLE BOULEVARD PILOT



*Proposed Bicycle  
Boulevard Network*



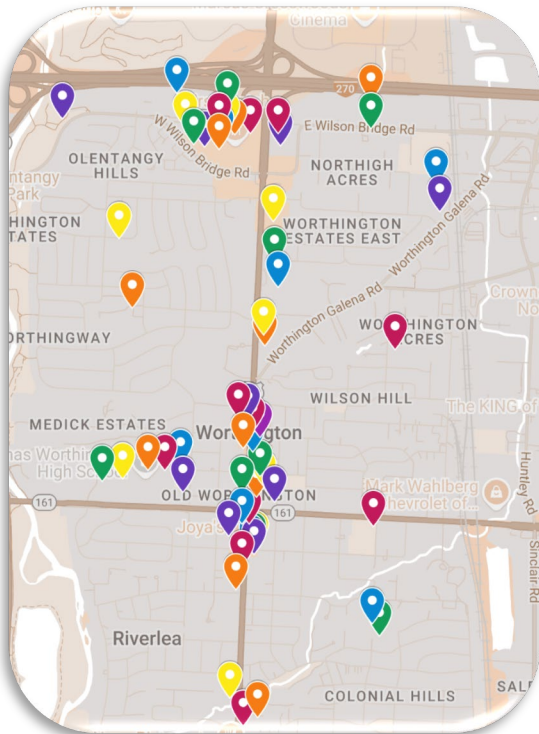
*Public Outreach and  
Education*



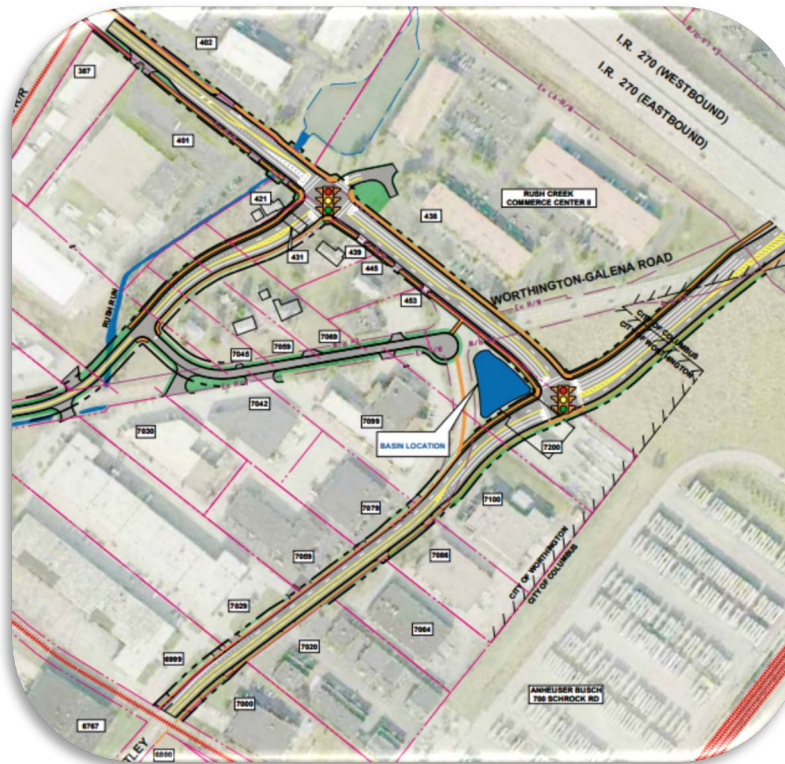
*Implementation*



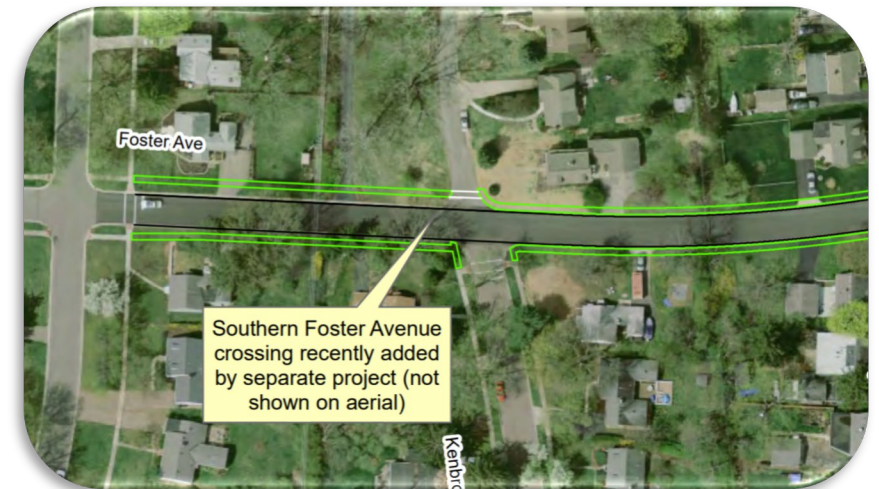
# RECENT TRANSPORTATION EFFORTS



*Bike Rack Inventory  
and Expansion*



*Northeast Gateway Completion*



*Sidewalk Gap Program*





# 2025 PRIORITIES



## ■ Worthington–Galena Road - Complete Streets Feasibility Study

- Re-imagine streetscape throughout corridor
- Vehicle volumes decreased 59% from 2021 to 2022
- Explore pedestrian options over two at-grade crossings

## ■ Bicycle and Pedestrian Master Plan Update

- Update plan based on lessons learned through the Bicycle Boulevard Pilot
- Shift focus away from Bicycle Boulevards as a design target
- Prioritize neighborhood connectivity



## A CONNECTED WORTHINGTON BICYCLE AND PEDESTRIAN MASTER PLAN 2019

