



MID-OHIO REGIONAL
MORPC
PLANNING COMMISSION

111 Liberty St., Suite 111
Columbus, Ohio 43215
www.morpc.org

**NOTICE OF A MEETING:
CENTRAL OHIO BLUEWAYS STEERING COMMITTEE**

*IN-PERSON MEETING:
MAY 8, 2024: 10:30 AM – 12:00 PM*

AGENDA

Welcome & Purpose

Jonathan Miller opened the meeting by emphasizing the importance of the Blueways initiative in enhancing regional waterway access and connectivity. He highlighted the Committee's role in shaping the future of Central Ohio's water-based recreation and conservation efforts.

Introductions

Central Ohio Greenways Updates / Mapping Natural Assets Project

Staff provided updates on the Central Ohio Greenways and the Mapping Natural Assets Project. They discussed the progress of trail connectivity, the integration of natural asset mapping, and the importance of data in guiding future development. A Member inquired about maintenance plans, and it was clarified that jurisdictions are expected to follow their protocols.

Mission Statement and Vision Setting

Members and staff reviewed and refined the Mission and Vision Statements for the Blueways initiative. The discussion focused on aligning the Statements with the goals of accessibility, environmental equity, and regional collaboration.

Central Ohio Blueways Working Groups

Members and staff discussed the formation of Working Groups to advance specific aspects of the Blueways initiative. Staff outlined the roles of each Group, including outreach, technical planning, and policy development. Volunteers were solicited to participate in these groups, and several members expressed interest.

Adjourn

Please Notify Lynn Kaufman at 614-233-4189 or LKaufman@morpc.org to confirm your attendance for this meeting or if you require special assistance.

*The next Central Ohio Blueways Steering Committee meeting will be
August 14th, 2024 from 10:30 AM to 12:00 PM*

This Meeting will be in-person; details to follow.

William Murdock, AICP
Executive Director

Chris Amorose Groomes
Chair

Michelle Crandall
Vice Chair

Ben Kessler
Secretary

Mid-Ohio Regional Planning Commission

Central Ohio Blueways Steering Committee
Attendance

May 8, 2024, 10:30 am

Members Present

Maria M. Conroy, The Ohio State University
Doug Crandall, FACT
Lisa Daris, Olentangy Paddle
Laura Fay, Friends of the Lower Olentangy
Watershed (FLOW)
Zach Guthrie, City of Gahanna
Haley Ingram, Metro Parks

Amy Meade, Keep Columbus Beautiful
James Ramsey, Franklin County Engineer's Office
J.M. Rayburn, City of Dublin
Brock Sehen, Madison Soil & Water
Conservation District
Daniel Weis, T&M Associates

MORPC Staff Present

Tunazzina Alam

Lynn Kaufman

Jonathan Miller

Melinda Vonstein

CENTRAL OHIO BLUEWAYS

Steering Committee

May 8, 2024



MID-OHIO REGIONAL
MORPC
PLANNING COMMISSION

AGENDA



- WELCOME & PURPOSE
- INTRODUCTIONS
- CENTRAL OHIO GREENWAYS UPDATES / MAPPING NATURAL ASSESTS PROJECT
- MISSION STATEMENT AND VISION SETTING
- WORKING GROUPS
- ADJOURN



INTRODUCTIONS



MORPC

NAME

POSITION

ORGANIZATION

WHAT'S ONE THING YOU HOPE TO IMPACT
THROUGH CENTRAL OHIO BLUEWAYS?





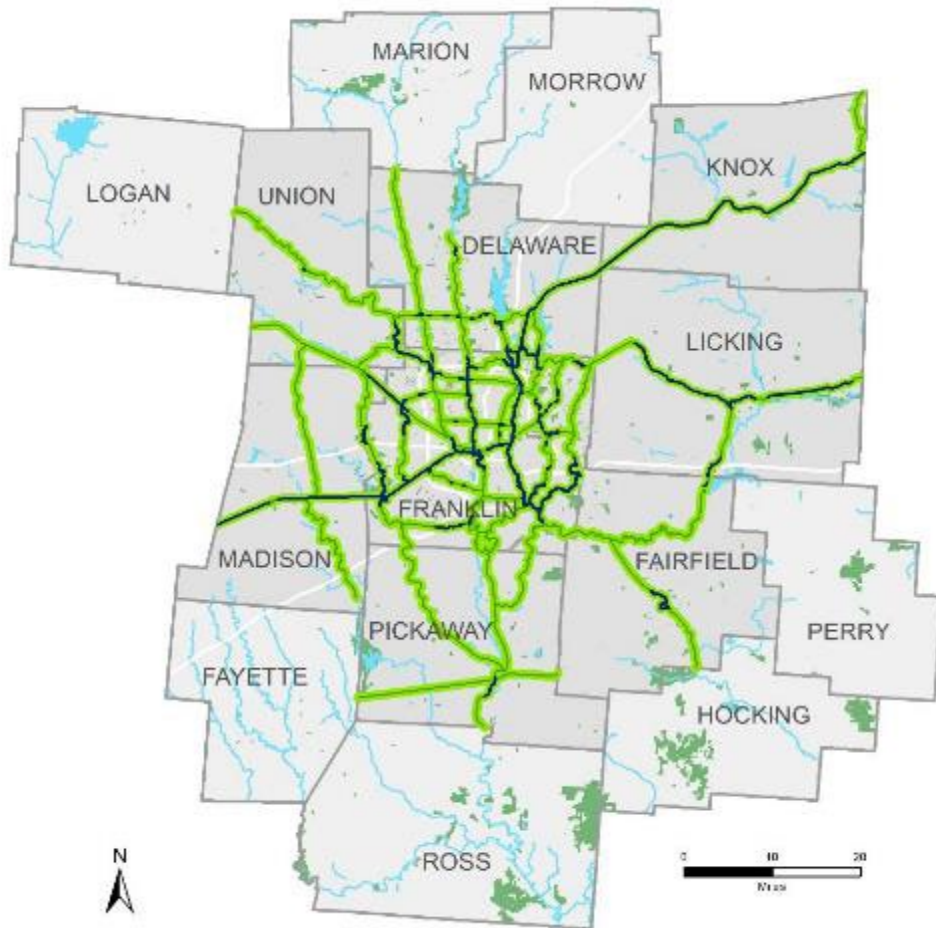
CENTRAL OHIO GREENWAYS

Central Ohio Blueways Steering Committee Meeting
May 8, 2024



MORPC

CENTRAL OHIO GREENWAY— Advancing access, connectivity, health, and more



VISION

*A world-class network of trails
easily accessible to every Central Ohioan*

MISSION

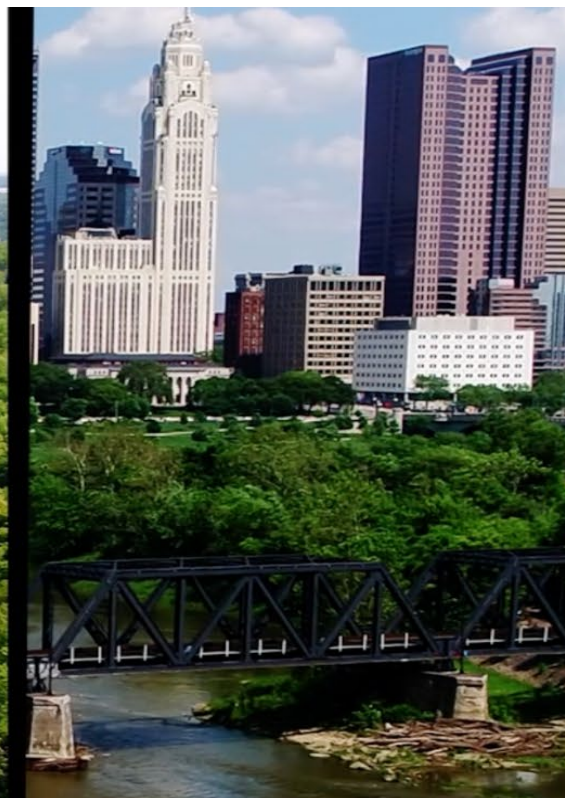
*Increase Greenways trails mileage and
usage
for recreation and transportation needs*



MORPC



CENTRAL OHIO BLUEWAYS: opening access to the region's waterways



MORPC

GREAT AMERICAN RAIL TRAIL

This independent economic analysis finds that the Great American Rail-Trail® could generate annually:

25.6M TRIPS

\$229.4M
IN VISITOR SPENDING

2,500
NEW JOBS

\$22.8M
IN NEW TAX REVENUE

\$104M
IN LABOR INCOME

\$161M
GDP CONTRIBUTION



ENCOURAGING TRAIL USE



Get Moving. Check In. Get Rewards.

Experience Columbus has teamed up with the Mid-Ohio Regional Planning Commission for a great outdoor trail pass program to enjoy with friends or family. These trails are perfect for hiking, biking, jogging, and even paddling! Try them all now—what are you waiting for?

Check out these links for more information and directions!

[Central Ohio Greenways Map](#)
[Central Ohio Biking Map](#)
[Rapid 5](#)

COLUMBUS OUTDOOR TRAILS PASS

Hike, Bike and Paddle Trail

- Mobile exclusive
- Instantly delivered via text and email
- No apps to download
- Experience the nature of Central Ohio

[Explore Now](#)



MORPC

CENTRAL OHIO GREENWAYS: opening access to the Communities

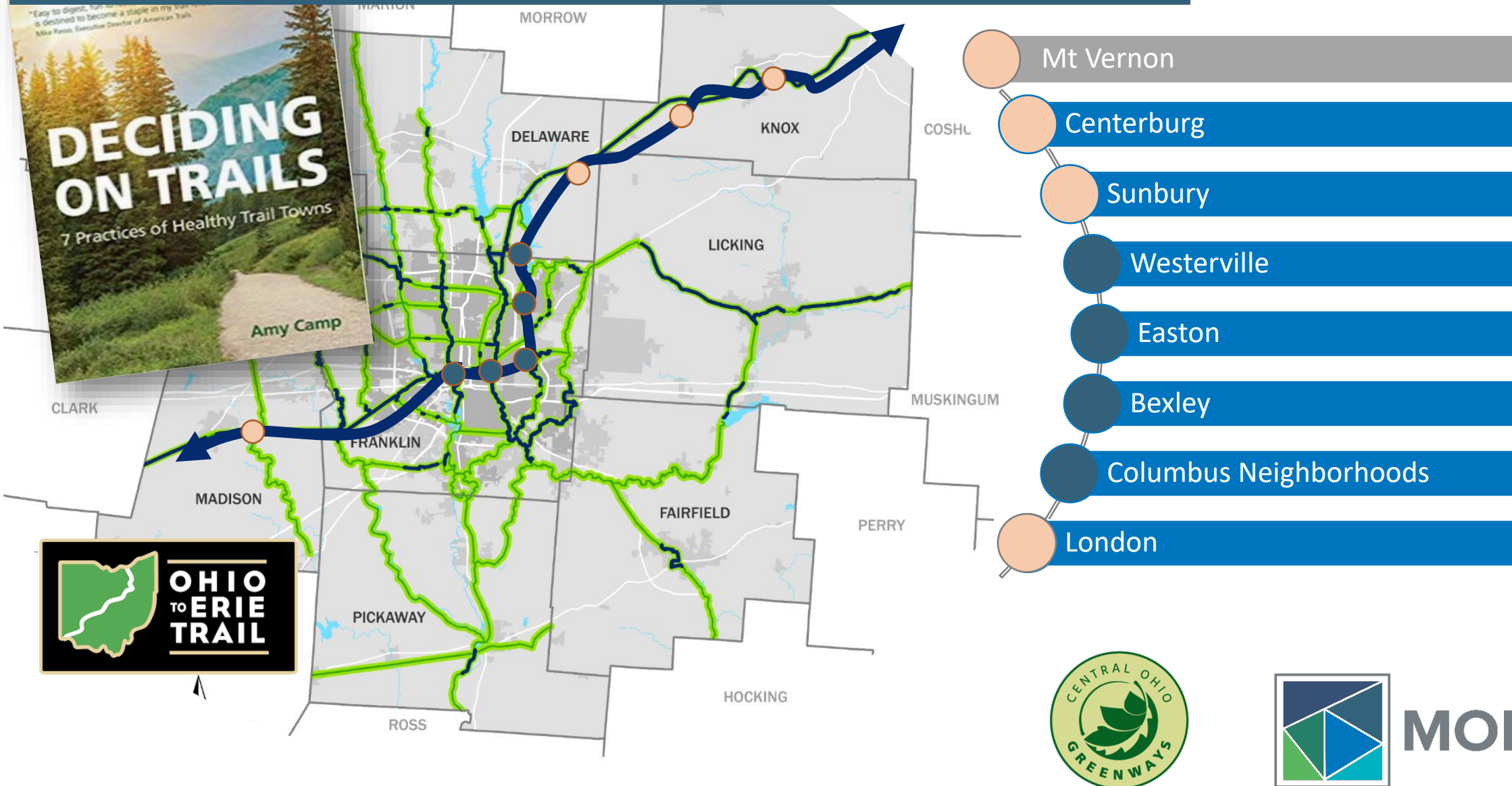


MORPC



TRAIL TOWNS

"To be a Trail Town is to make the decision to pay attention to trails" – and invest in them.



COG WAYFINDING STRATEGY



WAYFINDING PRINCIPLES

With wayfinding defined, it is necessary to identify the principles that will guide the application of this wayfinding strategy. A quick online search for "wayfinding principles" yields many different examples, with some common themes. The utility of each has been evaluated and synthesized into the following original format. Notably — each principle is expressed as if spoken by a trail user, again centering what they need to have an exceptional trail experience.

DON'T MAKE ME THINK!

Wayfinding elements will be predictable, consistent, and simple to understand.

KEEP ME MOVING!

Wayfinding elements will be at the proper scale for cyclists, walkers, and those using mobility devices.

There will be clarity at all decision points.

Trail users will not need to stop for any reason unless desired.

MAKE IT MEMORABLE!

Memorable places will support the creation of robust mental maps.

"Wayfinding elements" will include many types of environmental cues, including public art.

HELP ME CONNECT!

Wayfinding elements will allow trail users the opportunity to connect with each other and with communities' people, places, and cultures.

MEET ME WHERE I AM!

Wayfinding elements will feature inclusive design and universal icons that are accessible to all users.

Wayfinding elements will prioritize the needs of new trail users, and the needs of trail users over providers.

ANTICIPATE MY NEEDS!

Wayfinding elements will provide users with the right information, at the right time, in the right format.

Trail users will have the assets they need, when they need them.





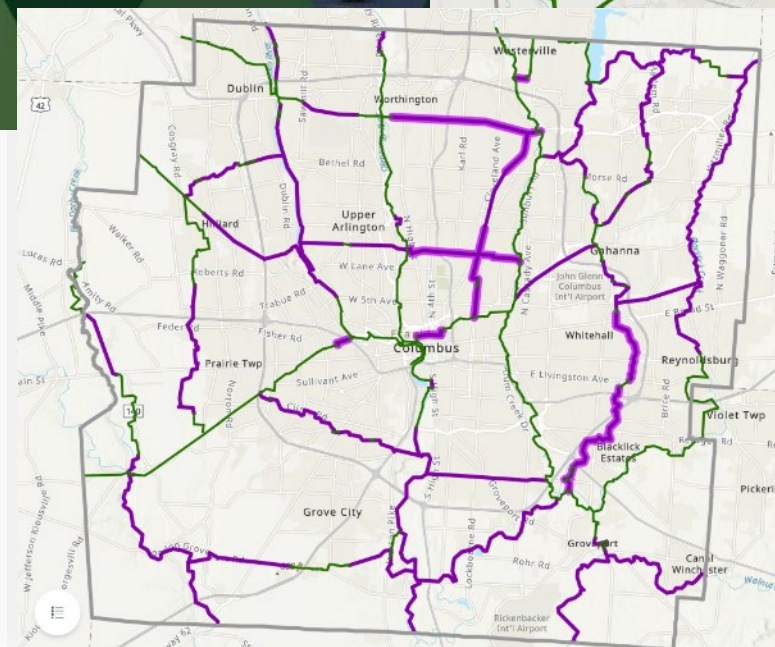
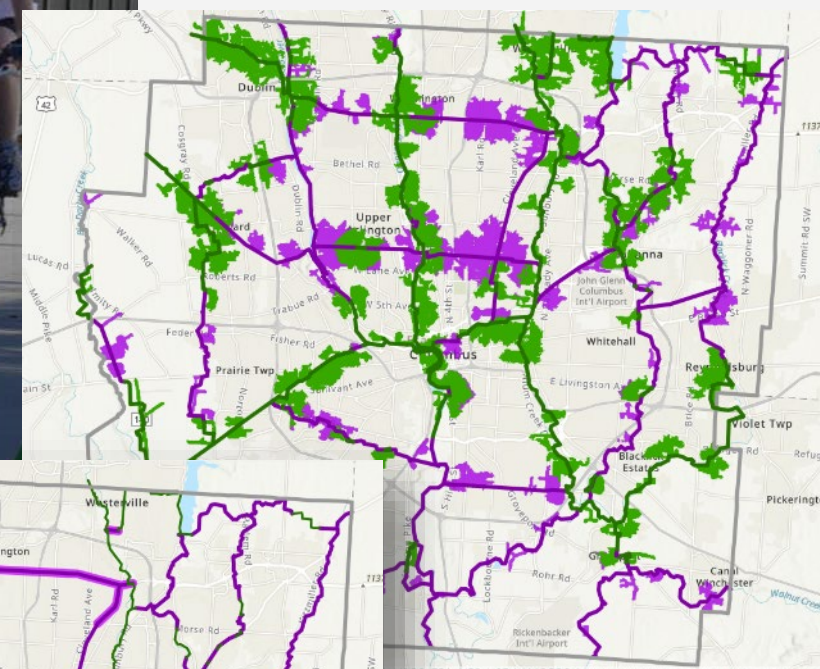
MORPC

Central Ohio Greenways

Regional Trail Vision Prioritization

Mid-Ohio Regional Planning Commission

January 20, 2021



Connectivity

Low Stress Roads

Existing Trails

Existing Access Points

Proposed Access Points

Bus Stops

Barriers



Health / Environment

Acres of Parks

Miles of Riparian Corridor

Number of Crashes



Social Equity

Poverty

Unemployment

Race

Disability

Population

Zero Car Household



Economy

Jobs

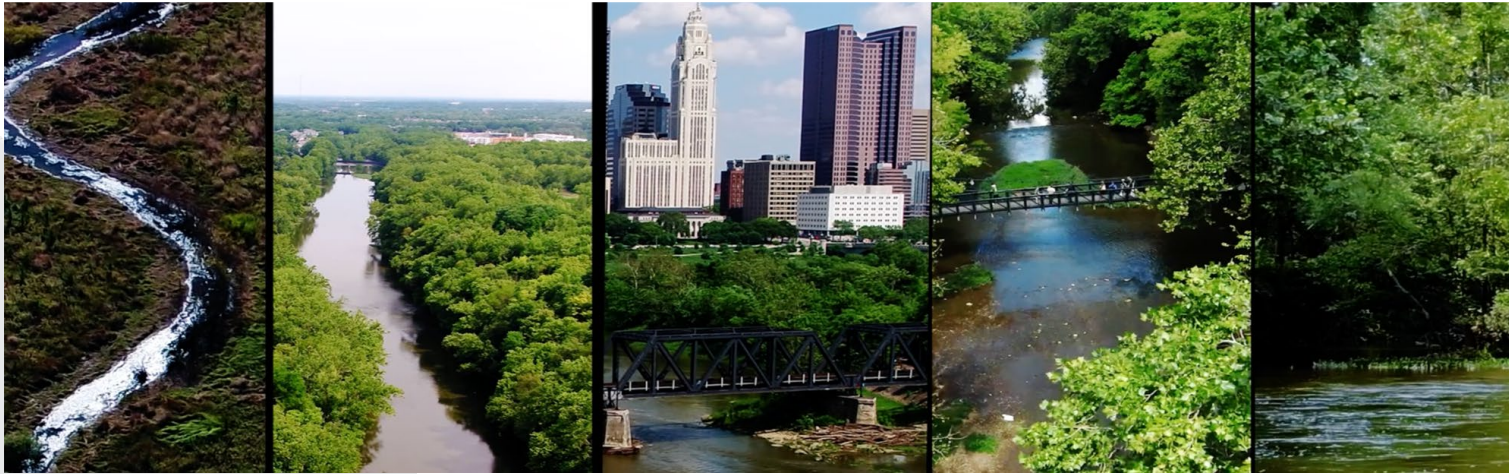
Education Facilities

Cultural Amenities



CENTRAL OHIO GREENWAYS

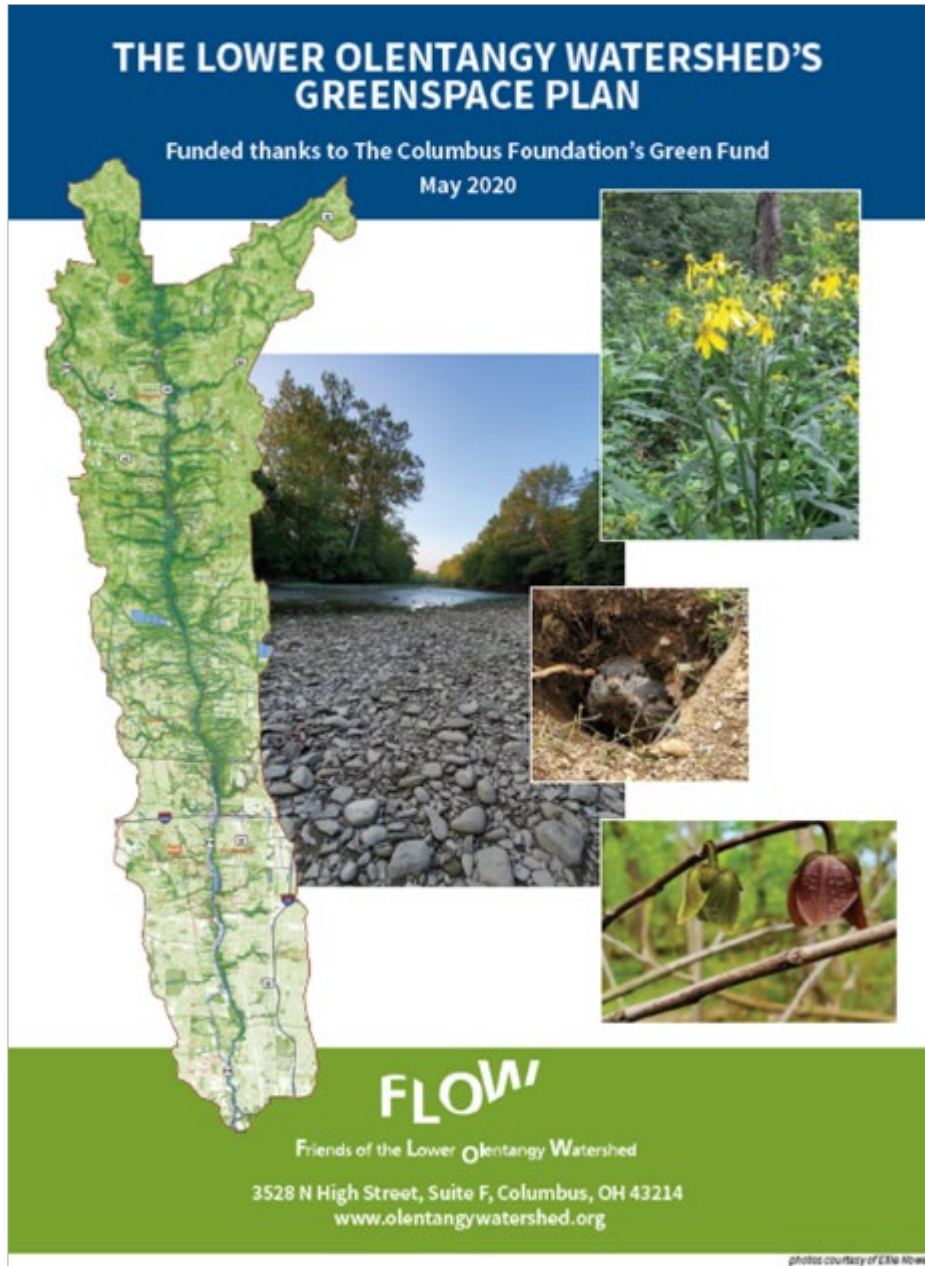
Mapping Natural Assets



PROJECT PURPOSE:

Summarize analyze watershed data to create an indexed score of environmentally sensitive land. This index will support informed development decisions that encourage equitable access to our region's natural resources for active transportation & recreation while also protecting the biodiversity of our region's river corridors.





GREENSPACE TIER	ACREAGE
1	3,136
2	6,041
TOTAL 1 & 2 ACREAGE	9,177
3	17,564
4	40,303
5	21,830
TOTAL	88,874

Tier 1: Areas most critical with respect to natural resources*

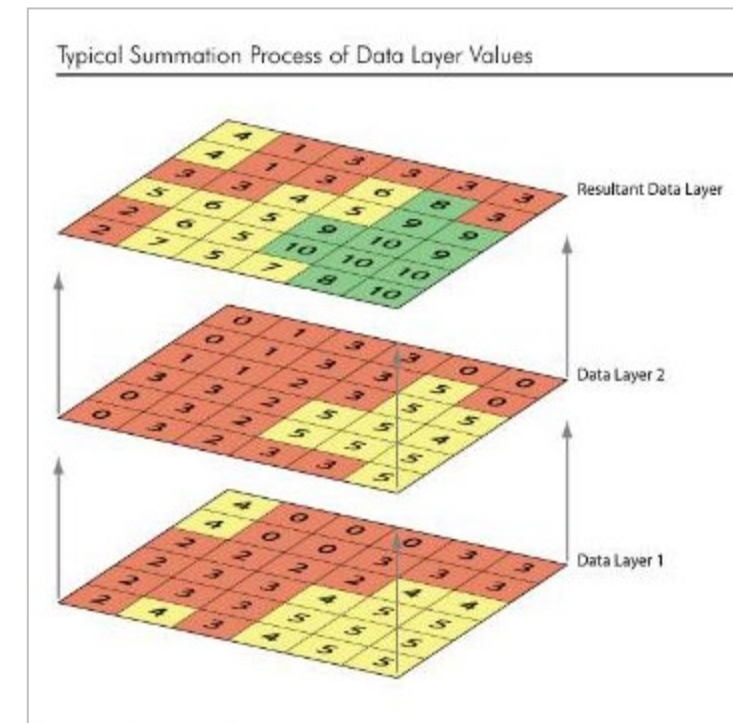


Tier 5: Areas less critical [relatively to other areas] with respect to natural resources

<https://www.olentangywatershed.org>



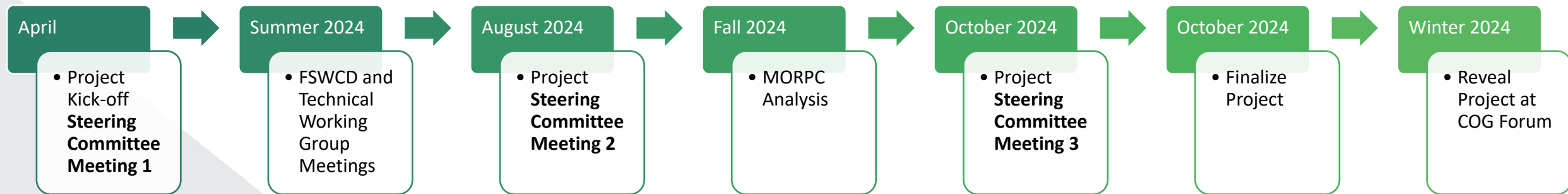
- GIS is a computer-based technology developed around geo-spatial information (having a location on the earth's surface).
- GIS allows for data development, management, and analysis as well as the presentation of the data in a variety of **visual** formats including **maps, database tables and charts**.



CENTRAL OHIO GREENWAYS

Mapping Natural Assets

Project Timeline



MORPC

Franklin County Natural Resources Assessment

Introduction and Approach

Analysis Layers	Rational
Landscape	
Canopy_Buffers	Created buffers around existing forested areas to promote creation of additional wooded lands and increase the size of existing stand and to explore linkages between features.
Canopy_Acres_SD	Scores based on Standard Deviation of the mean Acreage. The larger the tract of forest, the more important it is to protect.
River	
Floodplain_Buffer	Everything within the 500 yr floodplain for protection of stream corridor and increasing flow events Floodplain merged - Floodway, 100yr, 500yr and associated codes
Scenic_River_Buffer	ORC Section 1547.82 requires the review and approval of publicly-funded projects within a 1,000-foot corridor of a designated Wild, Scenic or Recreational River area outside of municipal corporation limits. Examples of these types of projects (roads, bike trails, sewer lines) are shown on the left side of the above graphic. Private land is not subject to any review or approval under the Scenic Rivers law. ORC Section 1547.81 provides for the protection of all private land uses such as home building, logging, grazing, agriculture, etc.
Tributary	
Streamway_Buffer	Established guidelines from OEPA Rainwater and Land Dev Manual based on streamway size to accommodate the meader belt Streamway width = 147 (Drainage Area in square miles)0.38 (Approximately 10 channel widths)
Construct_Permit_Buffer	Protection of tributaries based type of stream as defined in Olentangy Construction Permit - Intermittent & Emphemeral = 30 ft/ Perennial = 80 ft /Mainstem = 100 ft
Water Bodies	
Wetland_Buffer	Protect natural feature - established guidelines for buffers - re-established guidelines from OEPA Rainwater and Land Dev Manual (Cat 1- 25ft, Cat 2- 75ft, Cat 3- 120ft) Scored as if all wetlands are cat 3



For each of the natural resources listed below, please indicate how important you believe the natural resource is to the Franklin County Natural Resources Assessment.

Wetland Locations

- ☐ 5 - I consider this variable very important
- ☐ 4
- ☐ 3
- ☐ 2
- ☐ 1 - I do NOT consider this variable very important

For potential follow-up questions we may have:

- ☐ Please check here if you consider yourself well versed with this natural resource.

Analysis Layers	Rational
SOURCE WATER PROTECTION - Delco / Etc.	
Ground_Water_Protection_Zones	Deemed critical zones
Corridor_Management_Zone	Deemed critical zones
Watershed_Management_Zone	Deemed critical zones. Emphasis on protecting drinking water
ODNR - Natural Heritage - poly	
ODNR_NHD_Flora_Fauna_STATESTAT	Deemed critical catagories
ODNR_NHD_Flora_Fauna_FEDSTAT	Deemed critical catagories
ODNR_NHD_Geological_Features	Deemed critical category
SOIL ANALYSIS - poly	
Hydric_Soil_Ratings	Looks at the percentage of hydric inclusions in all the soil map units. Rather than just designating the various soil types as being hydric or not, the percentage gives a much better comparison of the various map units/soil types relative to each other. The more hydric a soil, the better potential for wetland development/protection from urbanization. hydric soils are more easily developed into wetlands
DRASTIC - Groundwater Pollution Potential - poly	
DRASTIC_Ratings	Rating takes into account: Depth to Water Table, Net Recharge, Slope, Soil Media Etc. Used the recommended rankings range provided by ODNR to designate the relative potential for groundwater pollution – the more potential for groundwater pollution, the more we want to protect the area. Scored as a potential for Greenspace to protect ground water resources.
Existing Protected Lands	
Protected_Areas	Intent: To highlight the locations surrounding existing wooded areas with an emphasis with the intent of linking areas together.

THANK YOU!

MELINDA VONSTEIN, AICP

Central Ohio Greenways Program Manager

Mid-Ohio Regional Planning Commission

T: 614.233.4222

Mvonstein@morpc.org



MID-OHIO REGIONAL
MORPC
PLANNING COMMISSION



MISSION STATEMENT AND VISION SETTING



MORPC

What is the role of a Central Ohio Blueways Program?





What should be the MISSION of a Central Ohio Blueways Program?

Expand Access

Environmental Stewardship

Coordinate and Support Local Partners and Organizations

Develop Access Development and Maintenance Guidelines

Unify Signage, finding, and Branding

Provide Toolkits for Preservation and Promotional Usage

Promotes Safe, Legal, and Ethical Access

MISSION STATEMENT AND VISION SETTING



MORPC

What make a Central Ohio Blueways Program a “success” in the future?



MISSION STATEMENT AND VISION SETTING



MORPC

What should be the VISION for a Central Ohio Blueways Program?

Unified network of protected waterways

Shared goals and outcomes

Highlighting the differences of each Blueway Corridor

Have the healthiest waterways in the nation

Safe, fun, and natural

Provide sustainable, accessible, and engaging water-based recreational opportunities

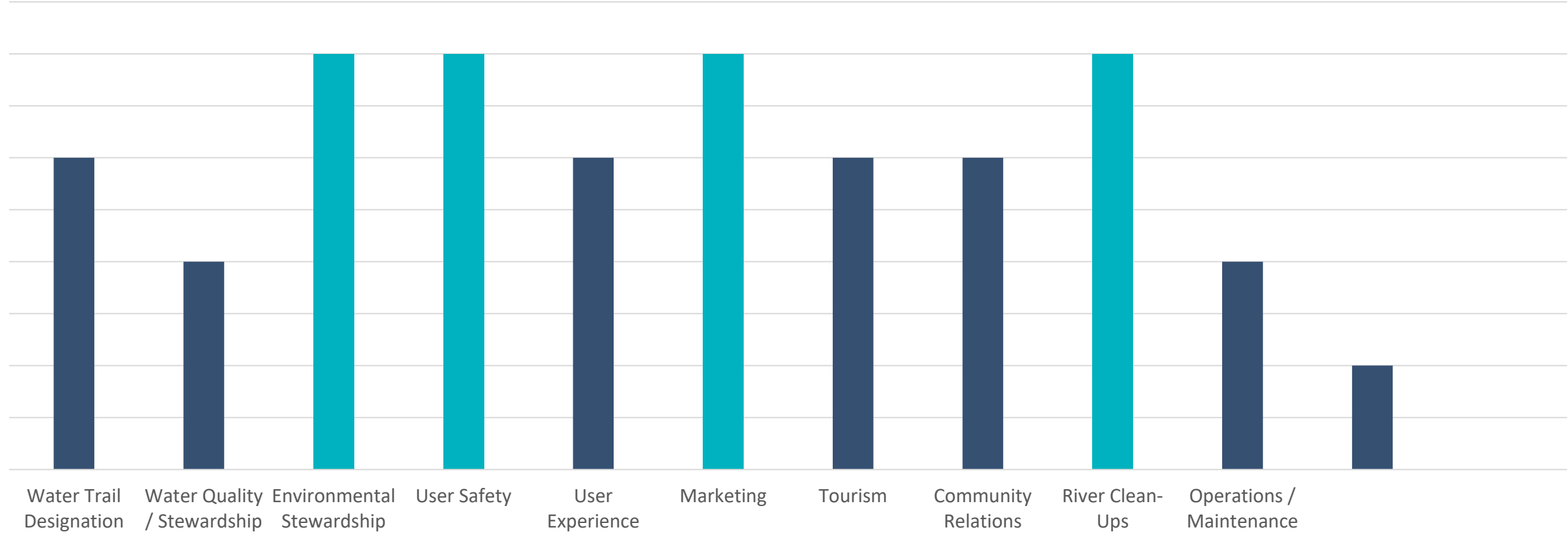
Foster deep connections between people and the region's waterways

WORKING GROUPS



MORPC

Which program areas should be included as WORKING GROUPS?



WORKING GROUPS



MORPC

Which program areas should be included as WORKING GROUPS?

Environmental
Stewardship / River
Clean-Ups

Marketing / Tourism

User Safety /
Experience

Water Trail Designation

WORKING GROUPS



MORPC

Which program areas should be included as WORKING GROUPS?



CENTRAL OHIO BLUEWAYS UPDATES



MORPC

INTERACTIVE MAPPING

- NEW INTERACTIVE MAPPING WEB MAP
- ADDITIONAL INFORMATION
 - ACCESS POINT AMENITIES
 - NEARBY POINTS OF INTEREST
- STILL NEEDED
 - PORTAGE ROUTES
 - UPDATED HAZARDS



CENTRAL OHIO BLUEWAYS UPDATES



MORPC

RIVER CLEAN-UPS

- ENVIRONMENTAL STEWARDSHIP WORKING GROUP
- PARTNER WITH KEEP COLUMBUS BEAUTIFUL
- DETAILS
 - OCTOBER 12th (SATURDAY)
 - 8 LOCATIONS



NEXT STEPS & ADJOURN



MORPC

NEXT STEPS

- WILL RECEIVE A FINAL FORM/SURVEY
 - REFINED MISSION & VISION
 - WORKING GROUP SIGN-UPS
 - RECOMMENDATIONS FOR ADDITIONAL WORKING GROUP PARTICIPATION
- SCHEDULE RECURRING MEETINGS FOR WORKING GROUPS
- DEVELOP WORKING GROUP GOALS

NEXT CENTRAL OHIO BLUEWAYS
STEERING COMMITTEE MEETING:

AUGUST 14TH,
2024