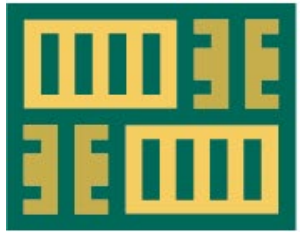




MID-OHIO REGIONAL
MORPC
PLANNING COMMISSION

Rickenbacker Area Business Focus Group

**Aubrey Hauter, Economic Development Planner,
MORPC**



MORPC FREIGHT PLANNING

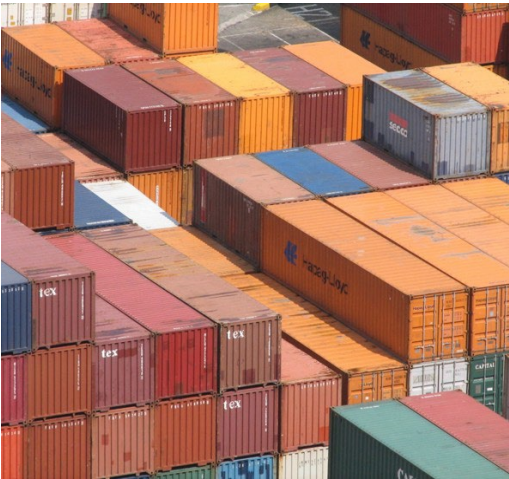
- Build on the logistical advantages that benefit central Ohioan companies
- Create economic opportunities for residents by monitoring the current performance of the freight network, evaluating regional and global trends that impact it, and convening the appropriate stakeholders to address challenges.

Notable Initiatives:

- 2018 Rickenbacker Area Study
- EDA Planning Grant application to develop a Regional Freight Plan
- Rickenbacker Area Freight Alliance Workshops
- Rickenbacker Area Freight Tour + Business Focus Groups

Rickenbacker Area

- ▲ Top ten foreign trade zone
- ▲ One of the world's only cargo dedicated airports
- ▲ NS intermodal facility
- ▲ One day drive from 45% of the U.S. and Canadian population
- ▲ Major Logistics and Distribution hub
- ▲ Employs 25,000 workers



Rickenbacker Area Business Focus Group

Goal: To gather firsthand insights from businesses in the Rickenbacker area on freight movement efficiency, infrastructure needs, and workforce attraction & retention challenges. The insights will inform MORPC's freight planning efforts, partnerships and grant initiatives.

Date: April 29, 2025

Institutional Partners:

- Rickenbacker Employer Assistance Network (REAN)
- Central Ohio Transit Authority (COTA)
- Columbus Region Airport Authority (CRAA)
- City of Groveport
- Ohio Department of Transportation (ODOT)



Private Sector Participants

FLUVITEX
USA

HH | **Hyperlogistics Group®**
An Employee Owned Company

HFI

omni
alliance



Allrite Logistics

Private Sector Feedback

Amenities: Businesses reported a lack of nearby amenities, especially food and retail, which limit options for area employees.

Housing: Although housing affordability is a regional concern, it has not significantly affected hiring or retention in the Rickenbacker area.

Workforce: All businesses reported being fully staffed, even during peak seasons. Participants reported that immigration concerns and limited last mile transit remain the top challenges for maintaining a reliable workforce.

Infrastructure: Key intersections (ex: Airbase Road and 762) cause frequent backups, and narrow roads (ex: Hamilton Road and Williams Road) hinder truck access. Sidewalks are needed to improve pedestrian safety and connectivity.

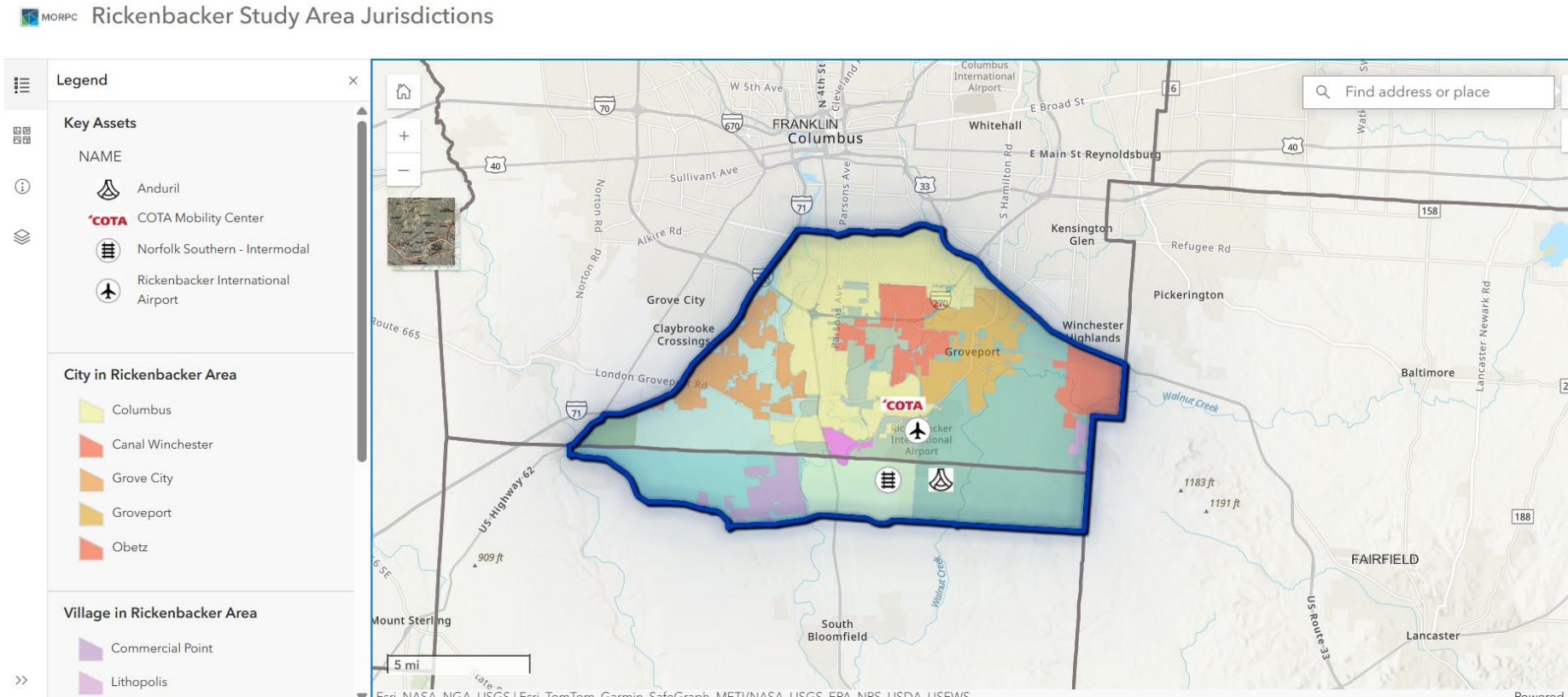
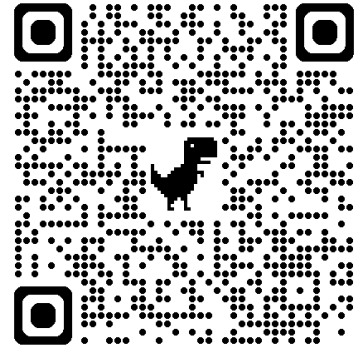


Actionable Insights

- ▲ Continued efforts to implement the recommendations of the 2018 Study will benefit the Area.
- ▲ COTA's Mobility Center will address some concerns that businesses expressed.
- ▲ MORPC, along with public and private partners, will collaborate on identifying solution(s) to the workforce mobility issue.



Resource: Rickenbacker Area Jurisdictional Map



<https://morpc.maps.arcgis.com/apps/instant/sidebar/index.html?appid=7dfa7370677e4fe889371991e83b8234>