



MID-OHIO REGIONAL
MORPC
PLANNING COMMISSION

111 Liberty Street, Suite 100
Columbus, Ohio 43215
morpc.org

T. 614. 228.2663
TTY. 1.800.750.0750
info@morpc.org

CENTRAL OHIO BLUEWAYS ADVISORY PANEL
MID-OHIO REGIONAL PLANNING COMMISSION

IN-PERSON MEETING

January 27, 2023, 10:00 am – 12:00 pm

AGENDA

- I. Welcome & Purpose**
- II. Central Ohio Blueways Recap**
- III. Partner Spotlight: RAPID 5**
- IV. Current Priority: ODNR State Water Trail Designation**
- V. Peer Spotlight: Great Miami Riverway**
- VI. Panel Q&A**
- VII. Future Goals**
- VIII. Workshop: Envisioning Blueways**
- IX. Takeaways & Next Steps**
- X. Adjourn**

Please notify Lynn Kaufman at 614-233-4189 or LKaufman@morpc.org to confirm your attendance for this meeting or if you require special assistance.

William Murdock, AICP
Executive Director

Erik J. Janas
Chair

Chris Amorose Groomes
Vice Chair

Michelle Crandall
Secretary



Central Ohio Blueways

ADVISORY PANEL KICKOFF

January 27, 2023



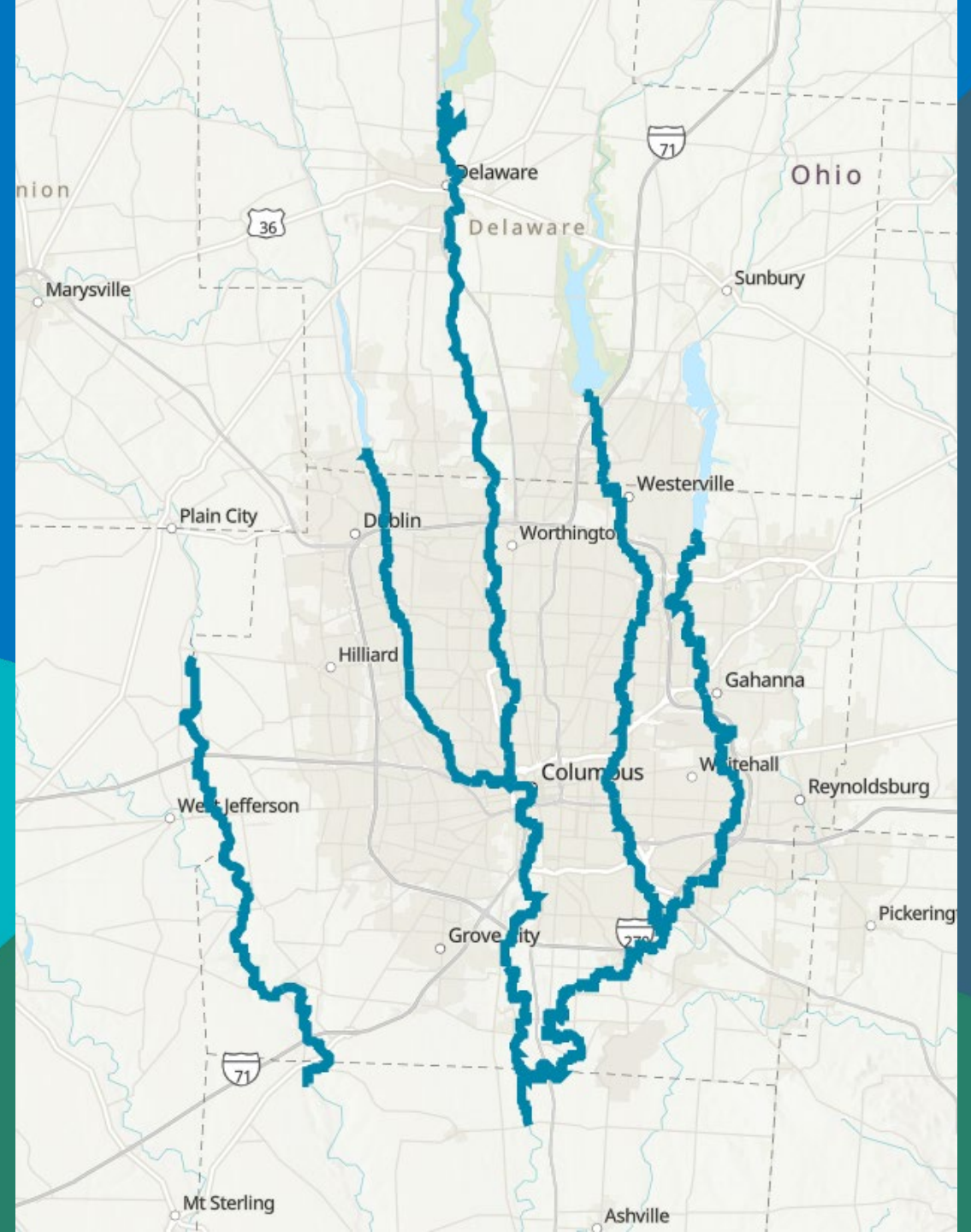
MID-OHIO REGIONAL
MORPC
PLANNING COMMISSION

CENTRAL OHIO BLUEWAYS RECAP

- Initiated in 2015
- Purpose
 - To Promote Water Trails in Central Ohio
- Objectives
 - Asses 92 miles of proposed Blueways
 - Increase Use and Knowledge of Central Ohio's Water Trails and Water Resources
- Tasks and Deliverables
 - Evaluate and Prioritize Access Points
 - Blueways Mapping (Access, Hazards, etc)
 - Develop Logo and Branding/Signage
 - Create Educational Information



MORPC

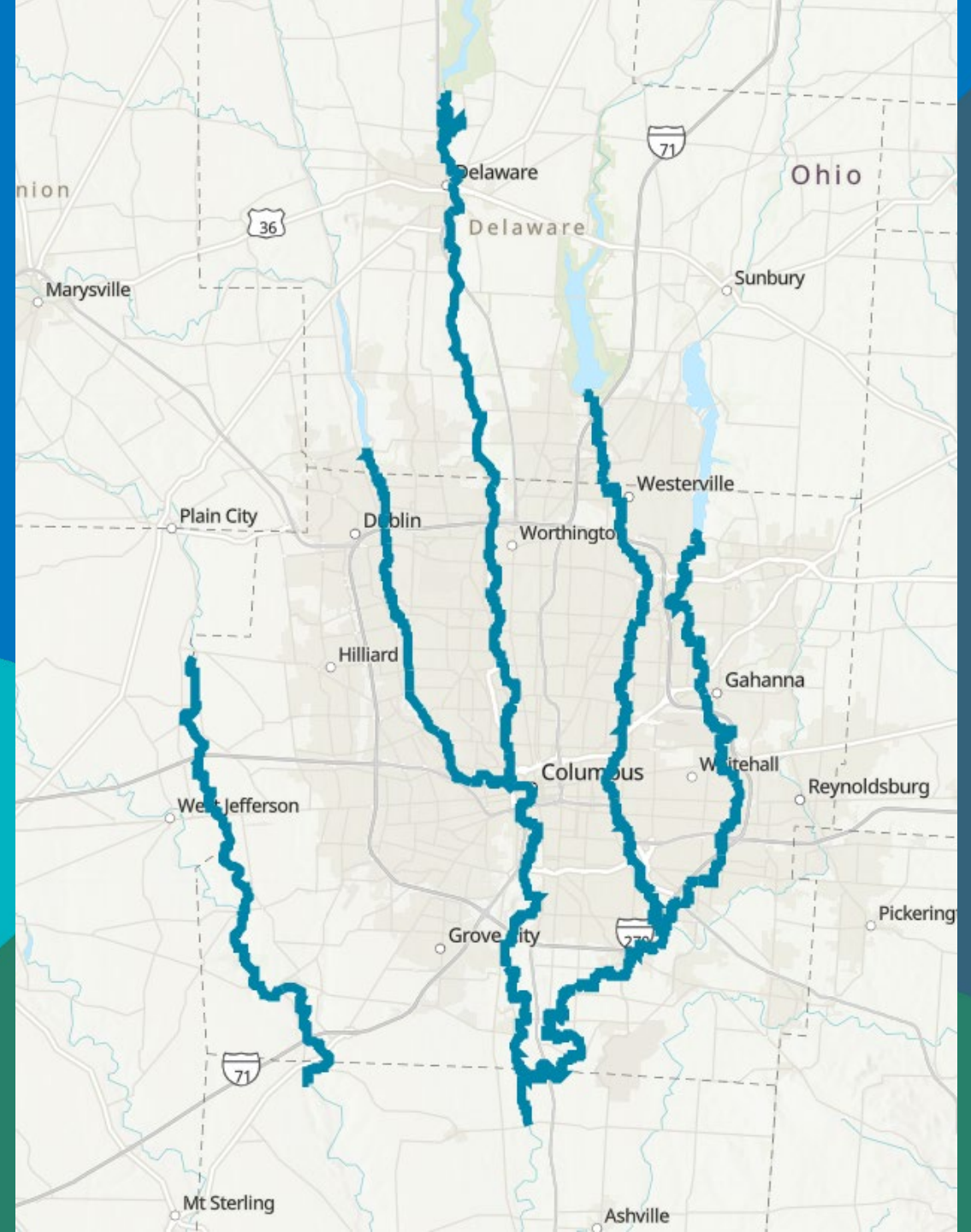


CENTRAL OHIO BLUEWAYS RECAP

- Interactive mapping debuted in 2018
- Coverage
 - Big Darby Creek (Scioto Darby Road to Orient)
 - Scioto River (O'Shaughnessy Dam to Rickenbacker)
 - Olentangy River (Delaware Dam to Scioto River)
 - Alum Creek (Alum Creek Reservoir to Three Creeks/Big Walnut Creek)
 - Big Walnut Creek (Hoover Dam to Rickenbacker)
- Features
 - Online Mapping of Access Points
 - Water Safety
 - Boat Registration
 - Protection of Waterways
 - Links to Water Levels



MORPC





WHAT COULD A BLUEWAYS PROGRAM LOOK LIKE?



The background of the slide is a light beige color with a subtle, white line-art pattern of topographic map contour lines. The lines are more densely packed in some areas, suggesting hills or mountains, and more spread out in others.

5

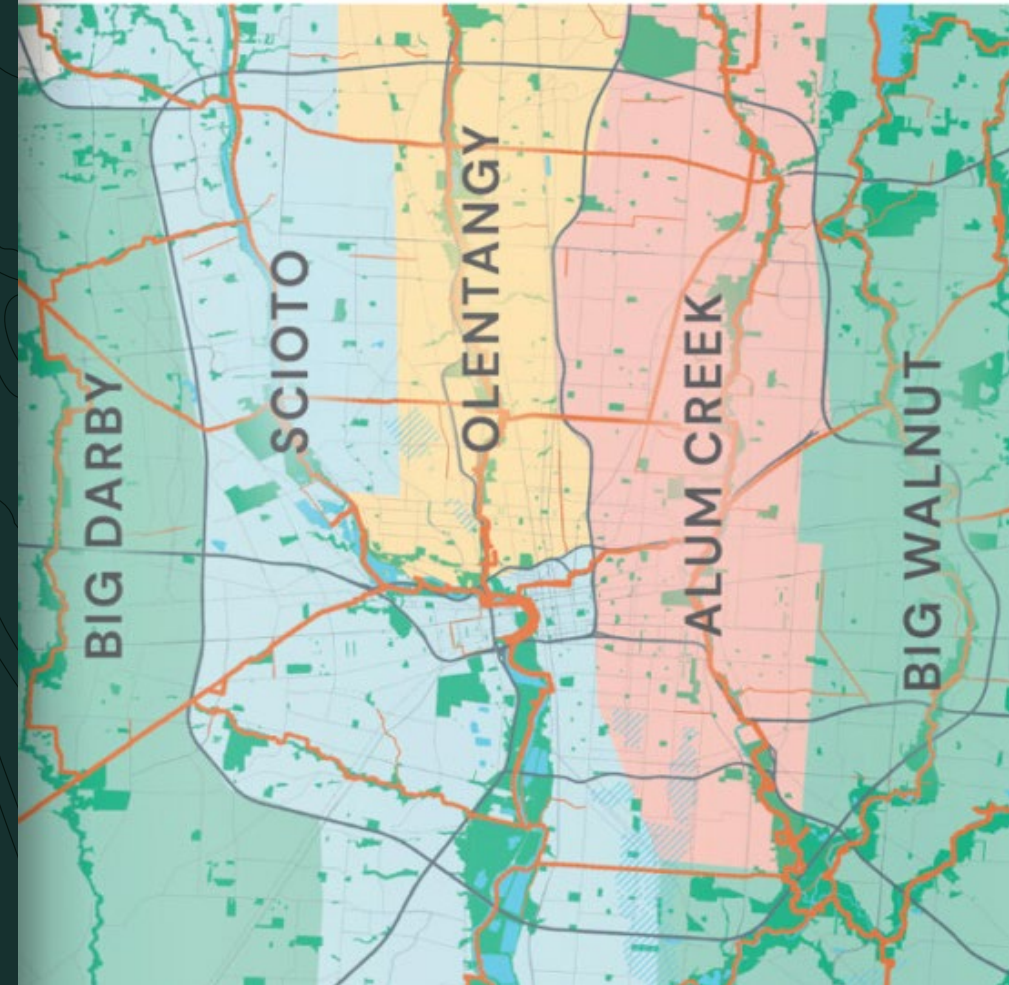
Connect with

Nature

and One Another

Blueways Advisory Group
January 27, 2023

OUR HISTORY



OUR NORTH STAR

OUR 5 PILLARS

Recreation

Inspires play and joy



Health & Well-Being

Creates community conditions where all residents thrive and contribute to their fullest potential



Environmental Stewardship

Supports sustainable and ecologically sound practices



Economic Vitality

Drives new business creation and prosperity



Equitable Access

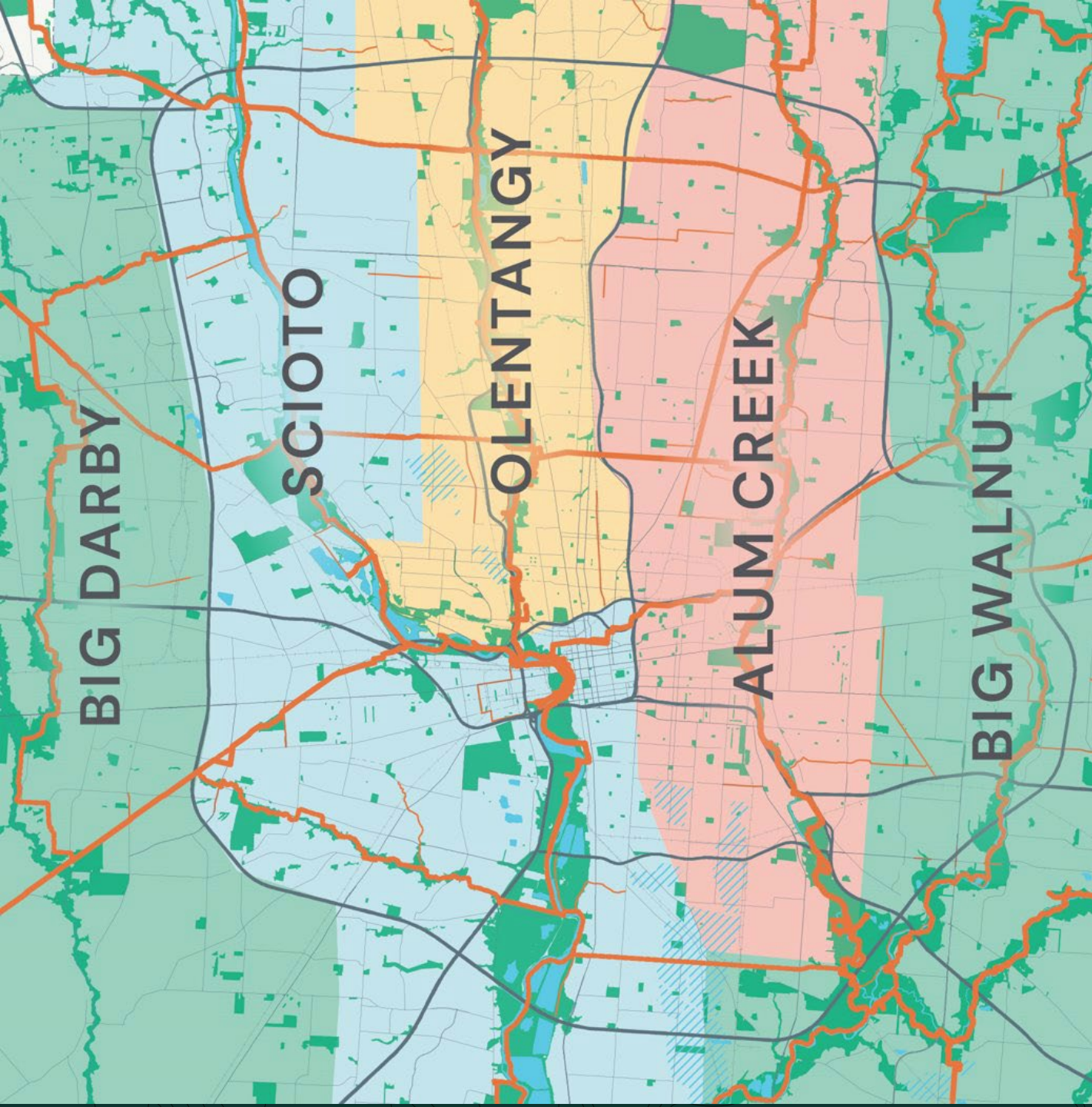
Expands access and mobility options



Our collective work comes alive through culture, arts, history, education, and human-centered design.







THE
TIME
IS
NOW



RAPID The logo for RAPID 5. The word "RAPID" is in white, bold, sans-serif capital letters. The number "5" is stylized, with the top horizontal bar in blue and the rest of the digit in green.

CURRENT PRIORITY

Designate the five centralized waterways as Water Trails through ODNR

- Partnership Agreements
- Update Mapping

**Olentangy River from Broadmeadows to Confluence is only designated Water Trail*

Where are we in that process?

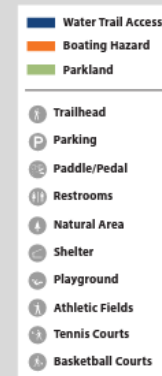
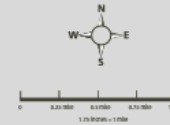
- January 27th - Advisory Panel Kickoff Meeting
 - County Representatives
 - Advocacy Groups
- Assembling Local Contacts – Impacted Jurisdictions
- Drafting Partnership Agreements



MORPC

Olentangy River Water Trail

8.94 miles / Class I - II



Watch for signage to portage around lowhead dams:



CURRENT PRIORITY

What's being included in the Partnership Agreements?

1. Participating Entities
2. Purpose
3. Geographic Scope
4. Signage and Branding
5. Accessibility
6. Responsibilities of Central Ohio Blueways
7. Responsibilities of Participating Entities
8. Terms of Agreement
9. Termination
10. Authorizing Signatures and Dates

**Appendices will include exhibit mapping and points of interest tables, definitions, signage and branding information, and aggregations of individual maintenance plans.*



CURRENT PRIORITY

What's currently included in mapping?

1. Extent of Blueways
2. Access Points
3. Hazards (dam, other)
4. Live Stream Gauges (NOAA)
5. Extremely Hazardous Areas

What's needed in mapping for Water Trail Designation?

1. Access Point Updates
 1. New amenity fields
2. Hazards Updates
 1. Add more typologies/categories
3. General updates
 1. Blueway extents (portage routes)
 2. More accurate water level links



MORPC





PLACEHOLDER

SARAH HIPPENSTEEL / GREAT MIAMI
RIVERWAY SLIDES



MORPC



PANEL Q&A

Melissa Sever; RAPID5
COO

Sarah Hippensteel Hall, PhD; Miami Conservancy District
Manager, Watershed Partnerships

Melinda Vonstein; MORPC
Central Ohio Greenways Program Manager



MORPC

POTENTIAL FUTURE GOALS

Blueways Improvement Plan and Prioritization

Why do Blueways need improvements?

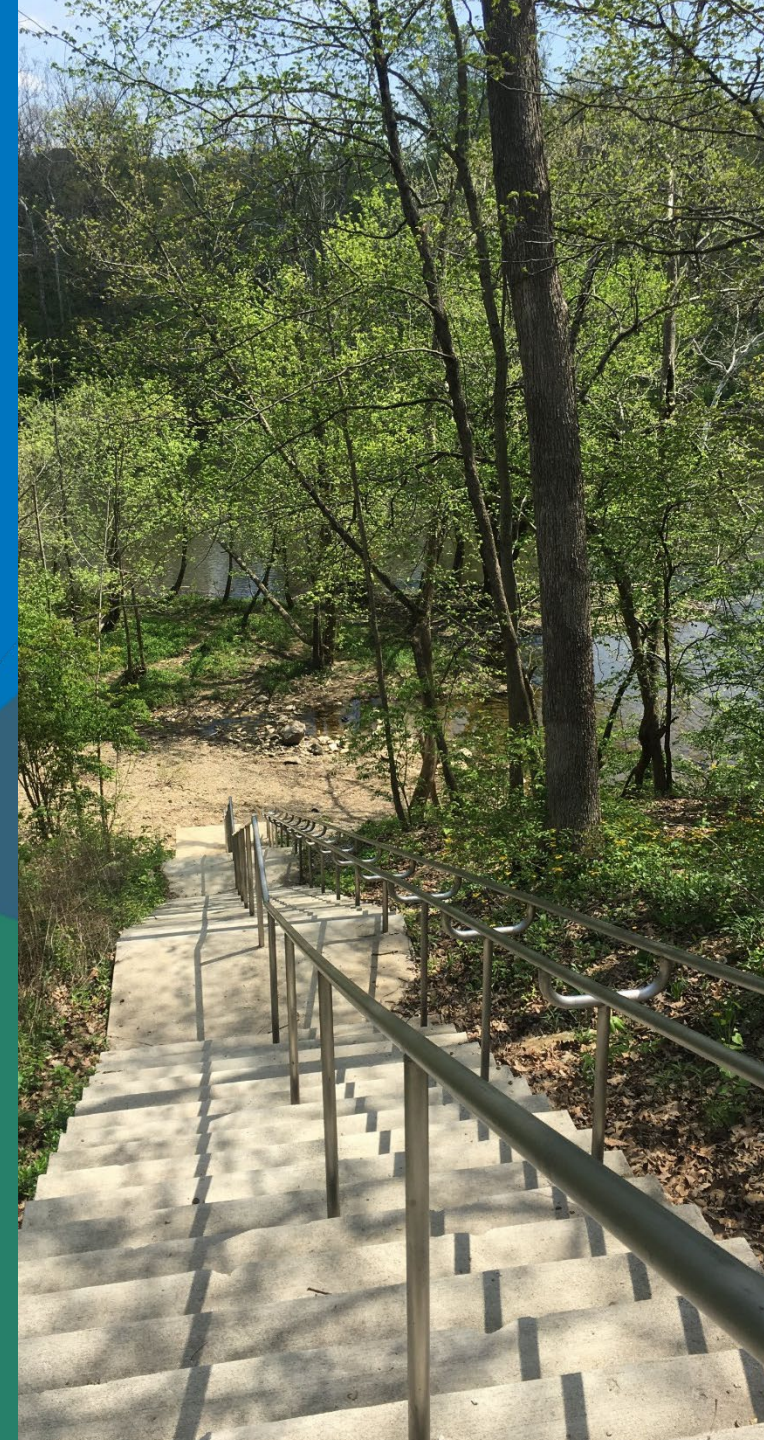
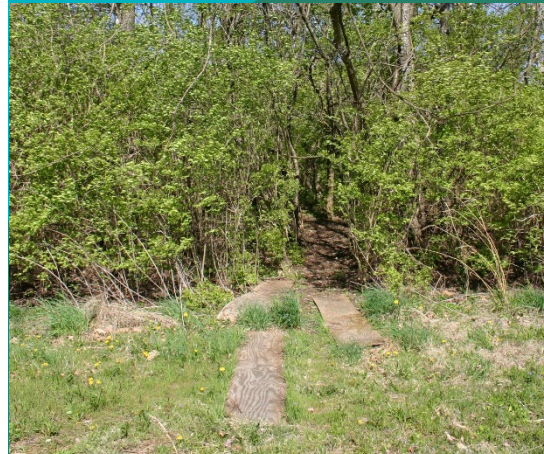
1. Access Points are significantly under-developed
 1. Difficult to find and use
2. Lack of knowledge contributes to lack of use
3. Uncertainty is a deterrent

Key Components

1. Best practices in access point design
2. Prioritization plans
3. Funding mechanisms



MORPC



POTENTIAL FUTURE GOALS

Blueways Signage and Wayfinding Plans

Why do Blueways need improvements to signage?

1. Access Points are poorly identified
2. Navigation and 'sense of place' is difficult
 1. No consistency
3. Benefit surrounding points of interest
4. Lack of safety and paddleboard tips

Key Components

1. Kiosk signage at access points
 1. Safety and boating tips
2. On & Off water signage
3. 'Sense of place' mechanisms



MORPC



POTENTIAL FUTURE GOALS

Blueways Trip Planner

Why create a trip planner?

1. Eliminate hurdles that stop people from using the water
 1. Can't find access points
 2. Don't know distances or time commitments
 3. Can't identify stopping places/rest areas
 4. Can't navigate shuttling watercraft
2. Promote surrounding points of interest
 1. Encourage rest areas near places of interest
3. Promote diverse community characters

Key Components

1. Ability to calculate distances and paddling times
2. Show rest areas with possible food and beverage options
3. Educate and promote proper usage and stewardship



MORPC





WORKSHOP: ENVISIONING BLUEWAYS



MORPC

DIRECTIONS:

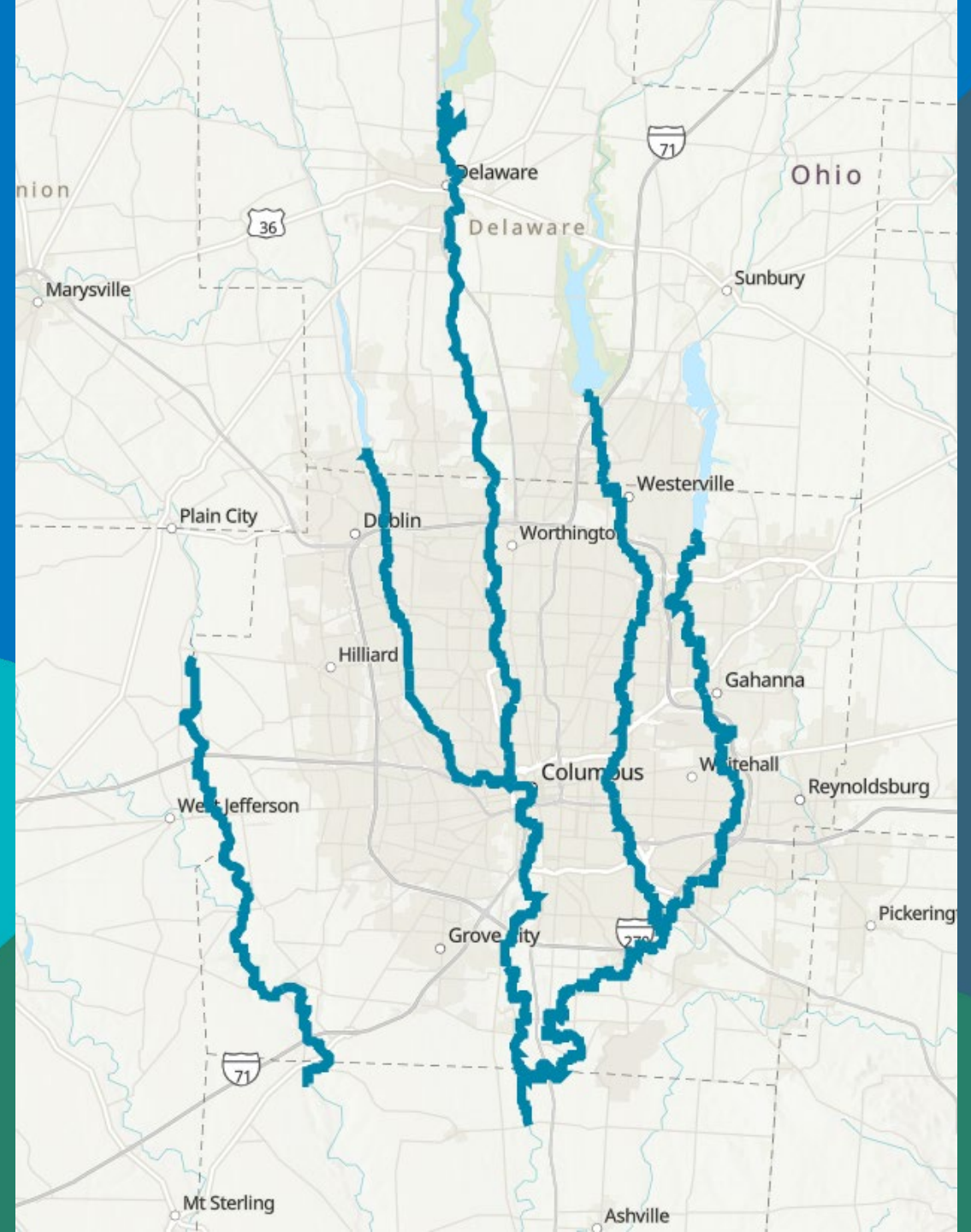
1. Walk around to each of the tables that highlight each of the Blueways.
2. Provide any comments directly on the map relating to:
 1. Favorite Locations
 2. Best Paddling Routes/Spots
 3. Places To Highlight for Natural Resource Protection
 4. Good Locations for New Access Points
 5. Best Places to Include New Amenities
 6. Anything Else?
3. Have Fun!

PARTING THOUGHTS

- Thank you for your time! We need you!
- Stay tuned for draft documentation & future meeting dates
 - Partnership Agreements & Appendices
- Remember to leave your preference for recurring meeting dates before you leave!



MORPC



THANK YOU

JONATHAN MILLER, MPA, AICP, GISP

Senior Planner

Mid-Ohio Regional Planning Commission

T: 614.233.4219

jmiller@morpc.org

111 Liberty Street, Suite 100

Columbus, OH 43215



MID-OHIO REGIONAL
MORPC
PLANNING COMMISSION

