

BOARD

Letty Schamp,
Chair

Laura Ball
Kacey Brankamp
Leah Evans
Catherine Girves
William Habig
Bill Hebble
Adrienne Joly
Dan Kaderly
Gregory Lestini
Alex Nouanesengsy
Ted Miller
Al Obayuwana
Eric Oberg
Andrew Overbeck
Abby Rhodebeck
Kelly Scocco
David Scheffler
Tony Slanec
Scott Ulrich
Julie Walcoff
Brad Westall

Staff Support

Taylor Axene
Kerstin Carr
Melinda Vonstein

Central Ohio Greenways Board Meeting
Wednesday, May 13, 2020
2:00pm – 3:30pm
Microsoft Teams Meeting

[Join Microsoft Teams Meeting](#)

[+1 614-362-3056](#) United States, Columbus (Toll)

Conference ID: 667 674 596#

Meeting Notes:

Board Members Present:

Letty Schamp, Laura Ball, Kacey Brankamp, Catherine Girves, Bill Hebble, Adrienne Joly, Dan Kaderly, Greg Lestini, Alex Nouanesengsy, Al Obayuwana, Eric Oberg, Scott Ulrich, Julie Walcoff, Brad Westall

MORPC Staff Present:

Taylor Axene, Kerstin Carr, Joe Garrity, Melinda Vonstein

1. Welcome & Introductions – *Letty Schamp, COG Chair*

- a. Letty Schamp welcomed Al Obayuwana, with the YMCA to the COG Board and he introduced himself to the Board.
- b. Letty Schamp congratulated Taylor Axene, MORPC Greenways intern on her recent graduation. She has received a Masters of City and Regional Planning. Board Members are encouraged to pass along professionally opportunities to Taylor.
- c. Letty Schamp opened a discussion about how COVID-19 has affected board members personally and professionally. Catherine Girves shared that due to budget concerns, Yah Bikes! is transitioning to an all-volunteer run program at the end of July.
- d. Joe Garrity shared a legislative update. There has been little movement on House Bill 746 after Ohio House Representative Don Manning passed away in late March 2020. Senate Bill 73 which would require drivers to yield to pedestrians in crosswalks passed the senate in February. Joe Garrity will coordinate with MORPC staff and COG Board member on ways to promote and testify to the House when the bill is brought to the House's attention. Joe Garrity continues to focus on local government revenue loss and infrastructure and



MID-OHIO REGIONAL
MORPC
PLANNING COMMISSION

The Central Ohio Greenways Board is part of the Mid-Ohio Regional Planning Commission (MORPC). Primary funding comes from partnerships with governmental entities through its Greenways program.

ADDRESS: 111 Liberty St, Suite 100 Columbus, OH 43215 | **PHONE:** 614.233.4112

WEB: www.CentralOhioGreenways.com

public works as the region heads towards recovery. Capital Bill trail projects will likely not be funded this year due to COVID-19 needs.

- e. Eric Oberg shared that the Economic Development Administration (EDA) announced the availability of \$1.5 billion in CARES Act funds in response to the pandemic. This funding will provide investments that support construction, non-construction, planning, technical assistance and revolving loan fund projects under EDA's existing Public Works program. Melinda Vonstein will follow up with more details.

2. Working Group Reports

- a. Trail Development – *Laura Ball, Working Group Chair*

- i. COG Regional Trail Vision Updates

Laura Ball shared the Vision updates and recommend the adoption of an updated Regional Trail Vision. Major updates to the Regional Trail Vision include (1) a trail in Dublin connecting the Scioto Trail to Glacier Ridge Metro Park, (2) a small trail connecting the Alum Creek to the Big Walnut Trail in northeast Franklin County, and (3) the Linden Green Line which would mostly run along an abandoned rail line in northeast Columbus. Catherine Girves made a motion to adopt, Eric Oberg seconded the motion, and all Board Members present voted yes to adopt. The COG Board Adopted the updated Regional Trail Vision and the recommendation will be elevated to the SAC for approval before moving to the MORPC Board.

- ii. COG Trail Prioritization Project

Melinda Vonstein shared a prioritization project update. The update included an overview of the scope and a progress report. A discussion of the project followed. Board Members are supportive of the project. Recommendations from Board members included looking at the relationship of redlining maps to the existing access map. Board members were supportive of the “true access” assessment as well as the corridor approach to the prioritization.

- b. Marketing & Communications – *Adrienne Joly, Working Group Co-Chair*

- iii. Taste of the Trails Events

Adrienne Joly shared a summary of the last working group meeting. Many local governments are canceling Taste of the Trails events this year. The hope is that more events could be hosted in 2021. The working group is considering ways to engage participants digitally on social media to access the trails.

The working group is also evaluating opportunities to conduct a large scale bike giveaway.

c. **Operations & Access - *Catherine Girves, Working Group Chair***

iv. **AEP Microgrid/Trail Lighting**

The microgrid project has evolved to focus more specifically on providing energy to emergency shelters during a disaster. Trail lighting may still play a role in the project as it moves forward but may not be the main focus. As the project is now better suited for another organization to take the lead, COG is stepping out of the effort but is open to being involved in the future if the project circles back to trails, mobility, and greenspace.

v. **Surveys**

Operations & Access recommends continue informal, open ended questions about trail planning, funding, and operations on social media as a way to engage new followers and encourage informal conversations.

d. **Partnership – *Bill Habig, Working Group Chair***

i. **Columbus Foundation Green Funds Grant – *Bill Habig***

Melinda Vonstein noted that Rapid 5 is on hold due to COVID – 19. TCF voted to repurpose the 2019 grant to collect additional data on trails and conduct an environmental and health impact analysis. COG applied for funds again this year to conduct an Economic Impact of Trails Study

ii. **Parks are Essential Business – *Chris Hermann***

Letty Schamp introduced Christ Hermann, MKSK, stating: “The ULI hosted a webinar last week. During the webinar, Chris Hermann and Andrew Overbeck with MKSK shared why Parks and Greenspace are essential especially during this time. They imagined a vision to combine and leverage efforts of groups like COG, Columbus Recreation and Parks, Metro Parks, local governments, private developers, and others to develop a true regional greenspace framework that would provide equitable opportunities to travel across the region and access greenspace. We invited Chris Hermann to share a portion of the webinar presentation with us today, to help us continue to think through how an effort like Rapid 5 could dramatically advance the mission of COG.”

Chris Hermann shared a shorted version of the Webinar. The full webinar can be found here:

<https://www.mkskstudios.com/dialogue/uli-columbus-webinar-parks-are-an-essential-business-rdgs4>

iii. Health & Environmental Impacts of Trails

3. Other Business and Closing

The next meeting is July 15th, 2020

Next Meeting
Wednesday, July 15, 2020
1:30pm – 3:00pm



Central Ohio Greenways

May 13, 2020 | Board Meeting



MID-OHIO REGIONAL
MORPC
PLANNING COMMISSION

CONGRATULATIONS TAYLOR!



MORPC





Trail Development Working Group

Regional Trail Vision Updates



MID-OHIO REGIONAL
MORPC
PLANNING COMMISSION

ADOPTED COG TRAIL DEFINITIONS



MORPC

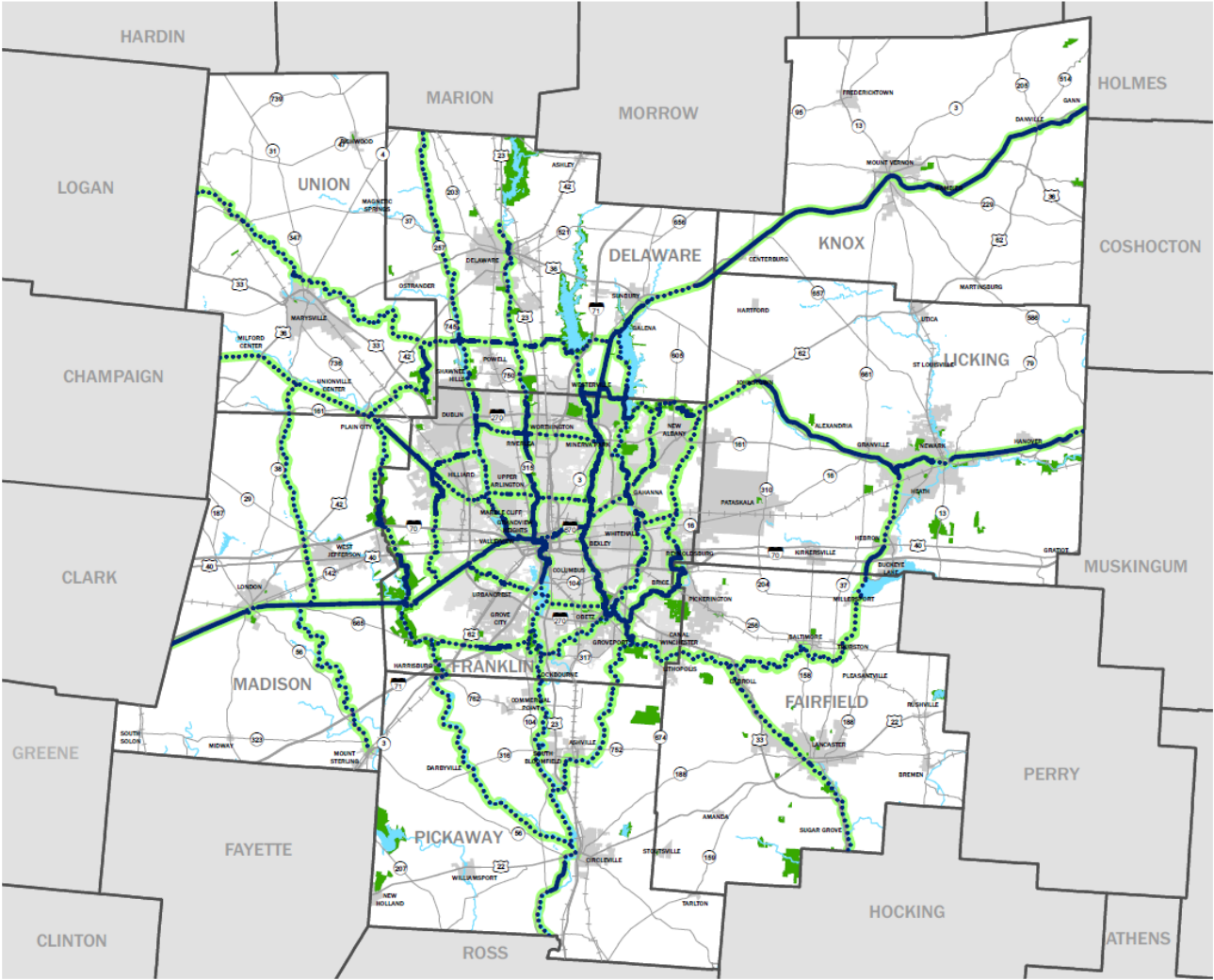
- **The Regional Trail Vision** is a network of 700+ existing and proposed Trails of Regional Significance that spans 8 counties in Central Ohio. The Regional Trail Vision Map was originally adopted in 2018 by the COG Board and MORPC's commission.
 - **The Regional Trail Vision Map may be updated annually. Candidate Trails of Regional Significance must be recommended to the board by the COG Trail Development Working Group during a COG Board Meeting.**
- **A Trail of Regional Significance** is a primary trail, predominantly off-street, that is multi-jurisdictional and connects people to major destination points. These trails have a well maintained, improved surface and should prioritize comfort and safety for trail users. In locations where Trails of Regional Significance intersect or conflict with vehicular traffic, the trail should be emphasized as highly as practicable. Landscaping and buffering should be incorporated into the design of these trails. Access to amenities, such as restrooms, drinking fountains, and parking, should be provided periodically. Wayfinding, snow & ice removal, maintenance, and 24/7 access of Trails of Regional Significance are critical to ensure that reliable and equitable access is provided to all users.
- **Community COG Trail Connectors** are secondary on-and-off street pedestrian and bicycle facilities that provide access from a community to the Trails of Regional Significance.



2018 REGIONAL TRAIL VISION

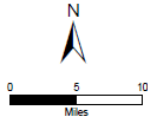


MORPC



Central Ohio Greenway Trails

- Regional Trail of Significance
- Existing Multi-use Path
 - Proposed Multi-use Path
 - Greenway Trail Corridor
 - River/Water
 - Park/Open Space



The information shown on this map is compiled from various sources made available to us which we believe to be reliable.
N:\ArcGIS\CORE\COG\COTrailVision.mxd
10/1/2019



REGIONAL TRAIL VISION UPDATE RECOMMENDATIONS

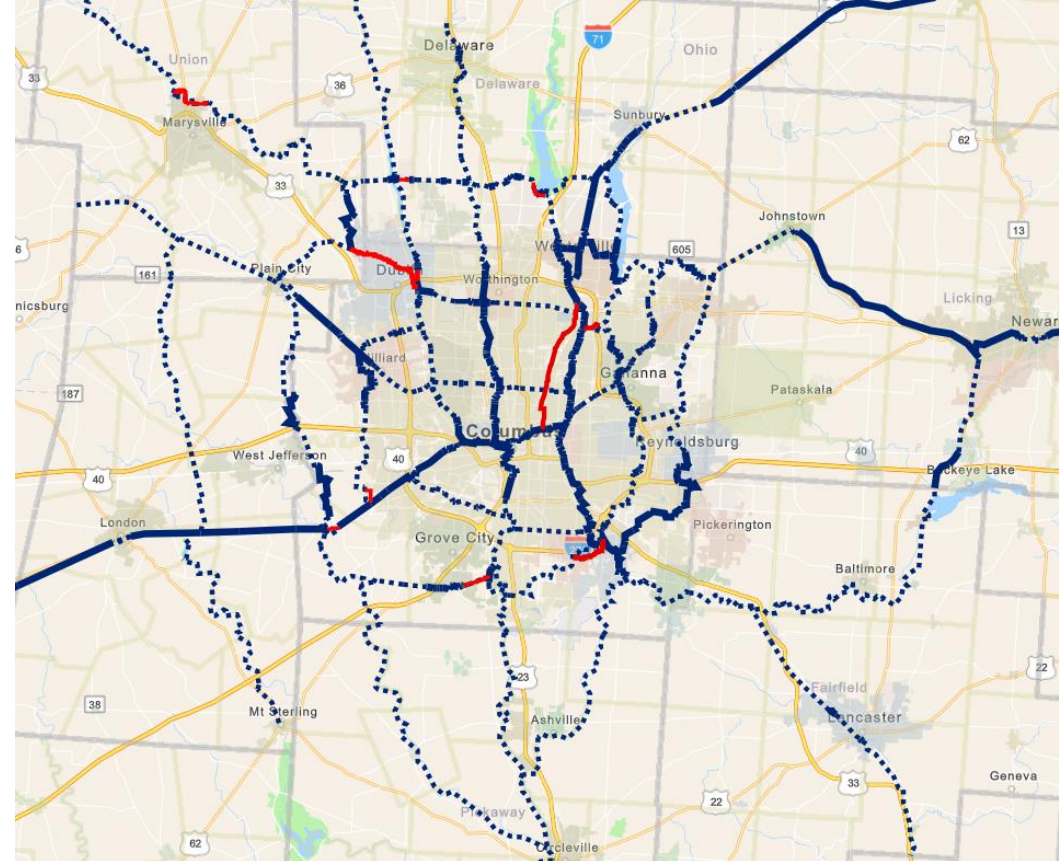


MORPC

The Trail Development Working Group recommends an updated Regional Trail Vision. Major new proposed trails include:

- **Dublin Connector Trail**
- **Linden Green Line**
- **Alum Creek – Big Walnut Connector**

Other updates are minor route changes recommended due recent feasibility understandings.



<http://morpc.maps.arcgis.com/home/webmap/viewer.html?webmap=5817553606414f4da4dc89e4854bf36>





Trail & Active Transportation Prioritization

Meeting | May 4, 2020



MID-OHIO REGIONAL
MORPC
PLANNING COMMISSION

TRAIL PRIORITIZATION: SCOPE OF SERVICES

Five Project Goals

COMPLETE
Update Bike
Level of
Comfort Map

IN PROGRESS
Conduct a Gap
Analysis

NOT STARTED
Rank Trail
Projects

IN PROGRESS
Rank 1st Mile/
Last Mile
Projects

NOT STARTED
Develop Case
for support

Project Footprint:

Franklin County

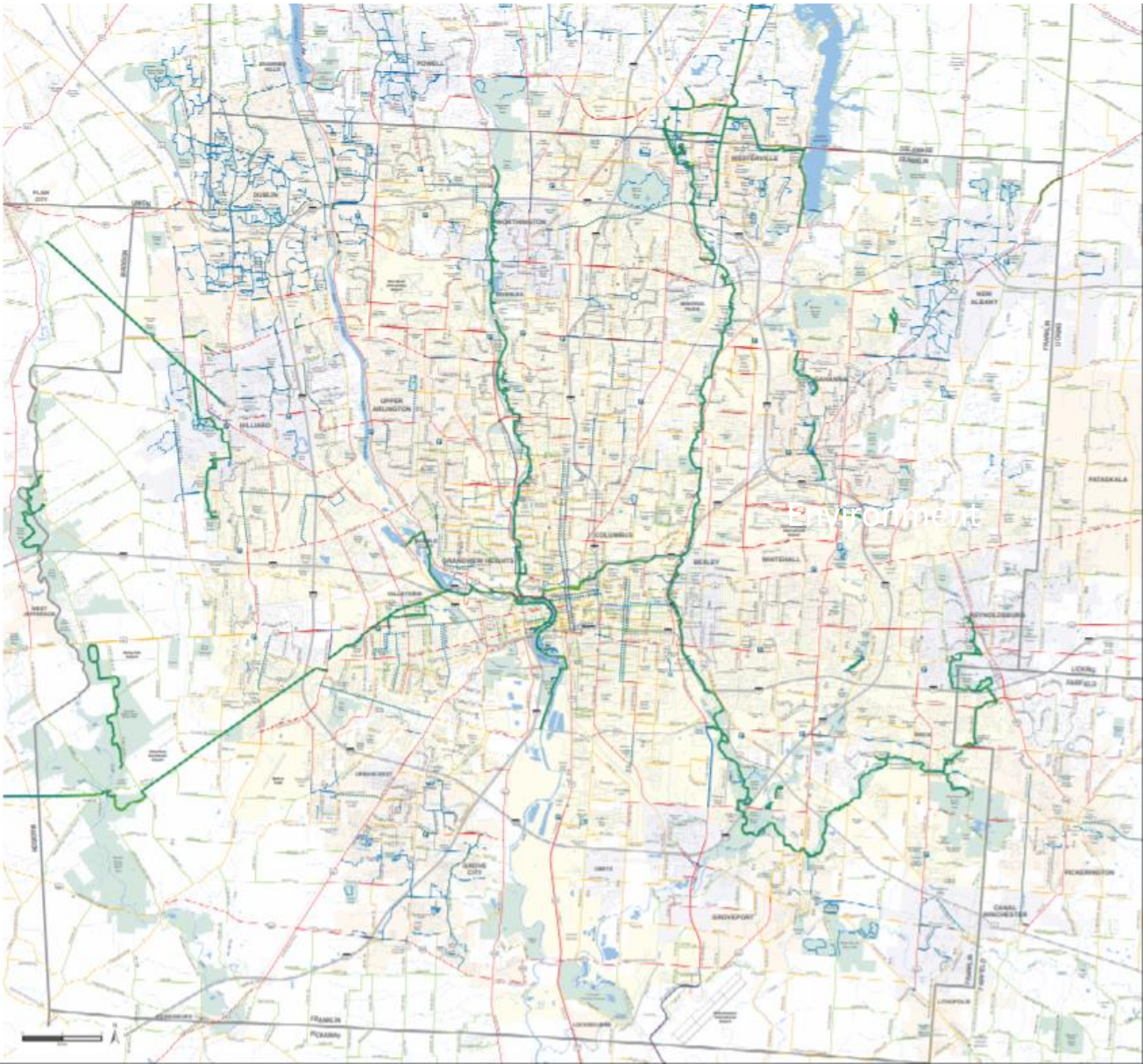
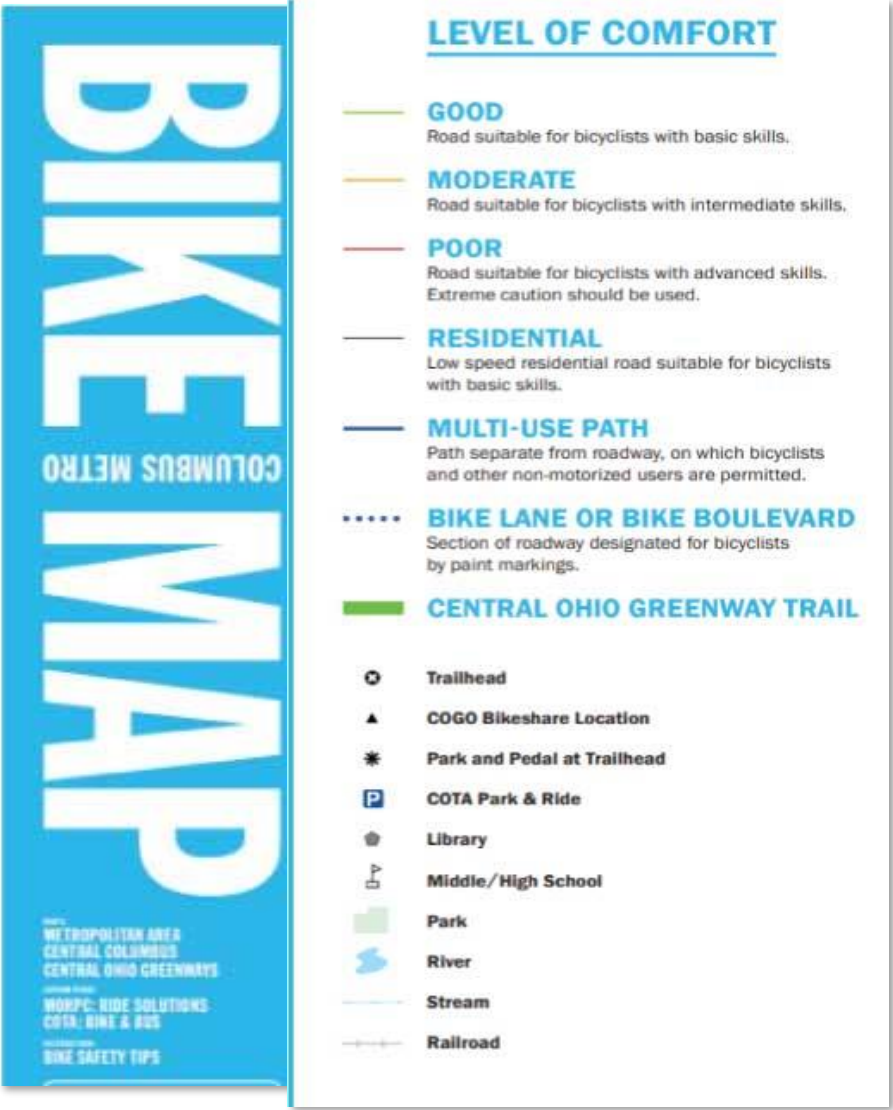
&

City of Columbus

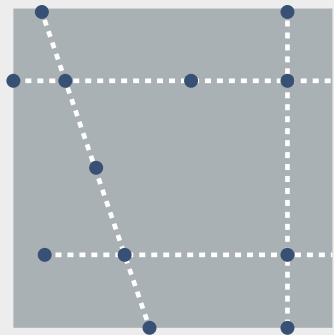


MORPC

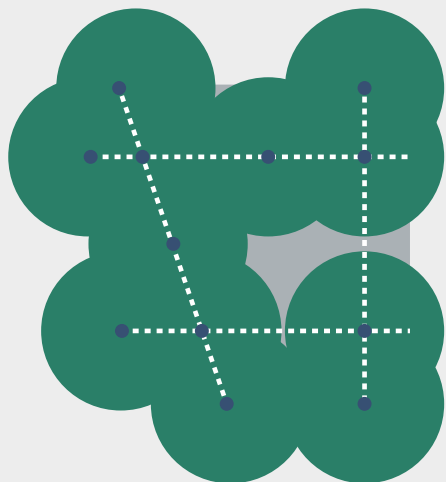
SCOPE OF SERVICES : UPDATE BIKE MAP



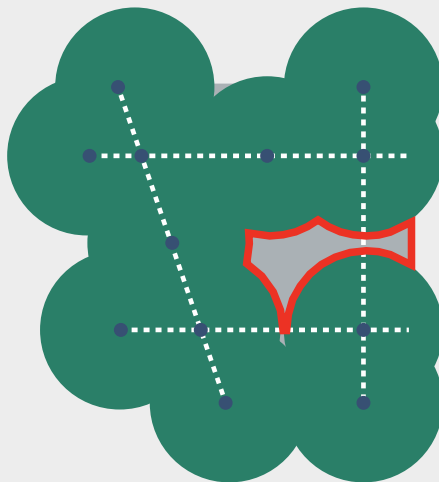
SCOPE OF SERVICES: GAP ANALYSIS



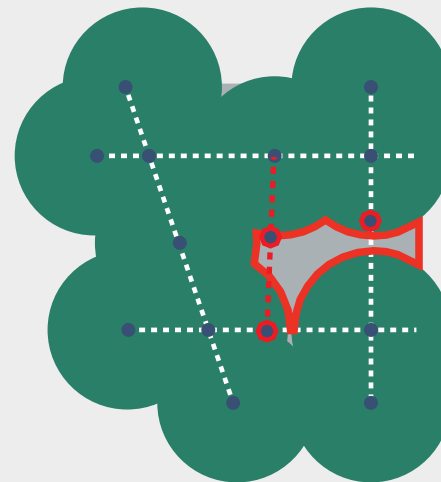
**Map COG
network &
access points**



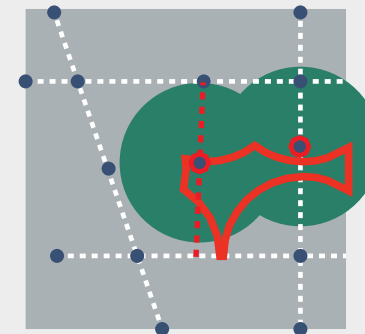
**Map a 1-mile
access* buffer**



**Identify
coverage gaps**



**Suggest new
access points
or low stress
corridors**

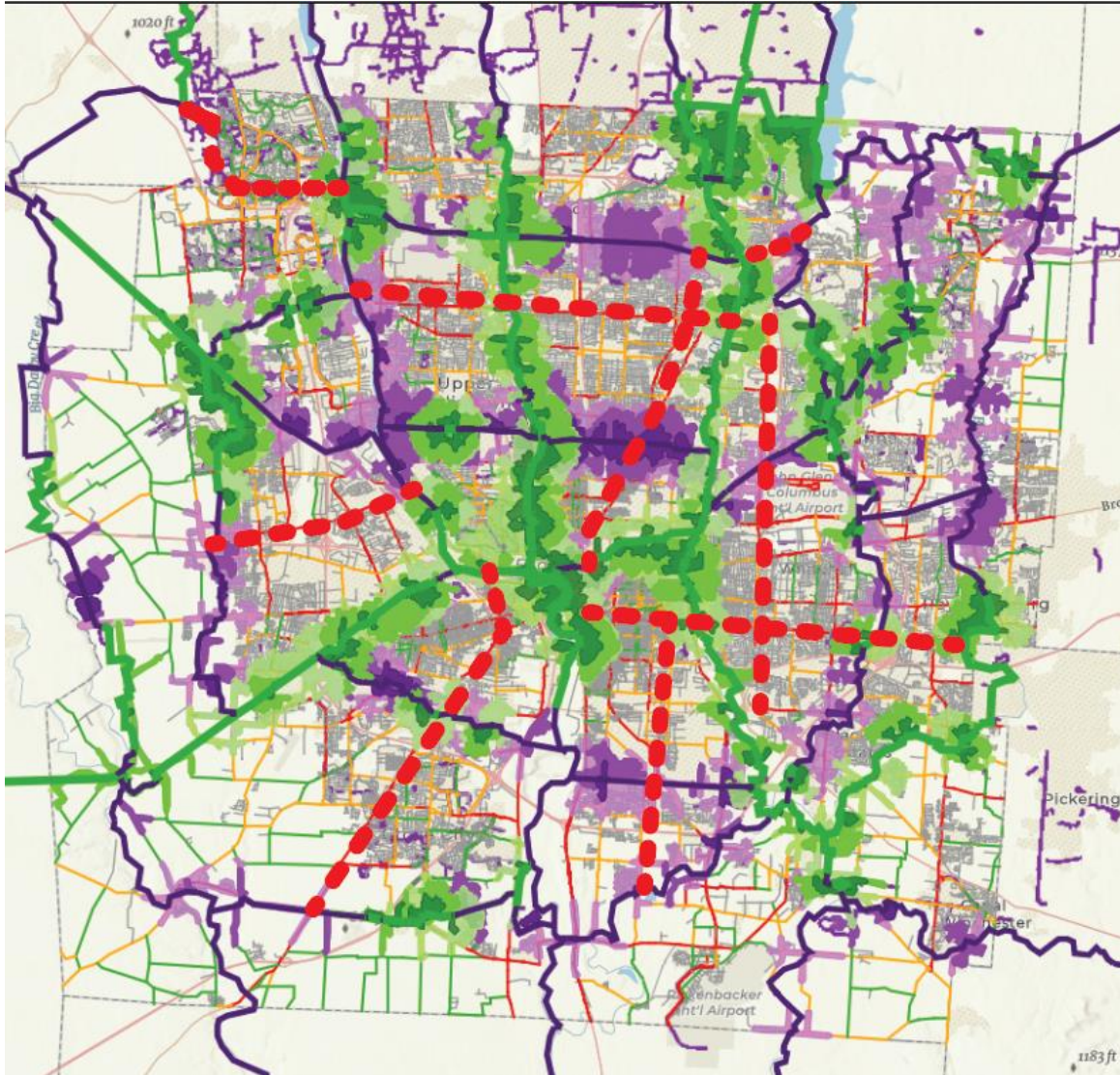


**Develop Case
for support**



MORPC

GAP ANALYSIS: PROGRESS



Existing Bike Access: 26%

Possible Bike Access: ~60%

Existing Pedestrian Access: 14%

Possible Pedestrian Access: ~60%

- **Next Steps**

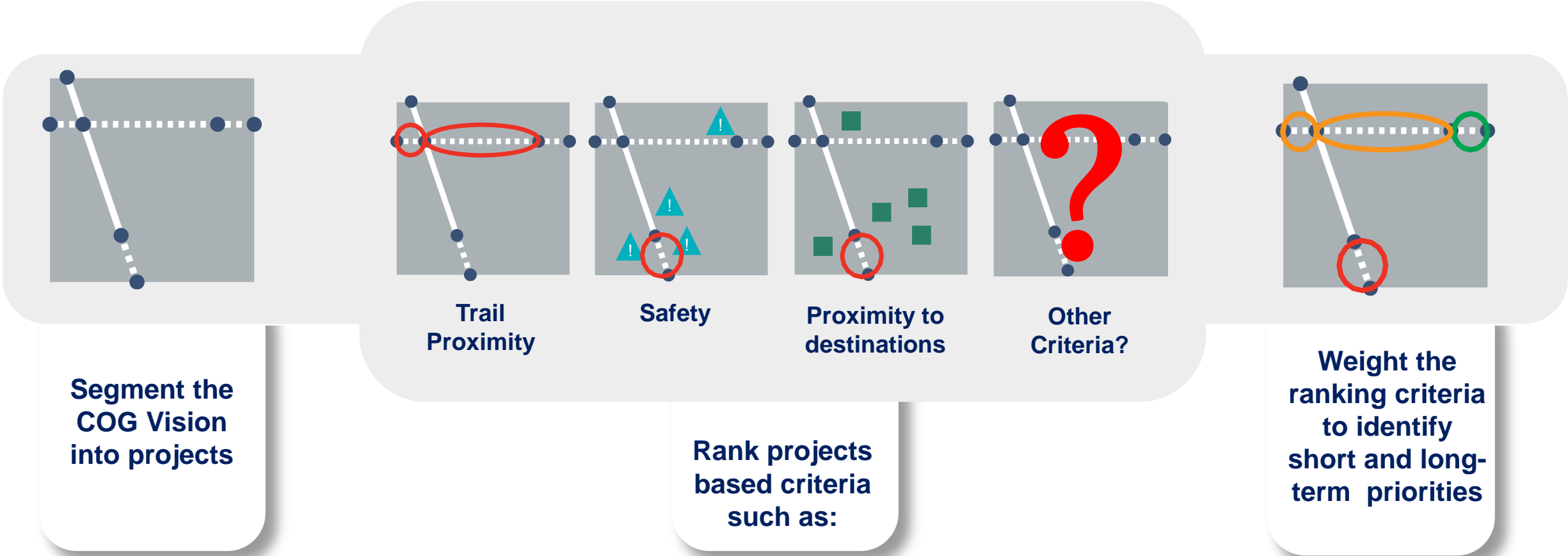
- Identify Gap Closure Corridors – Discussion

- Dublin Connector
- Morse Rd
- North East Rail Trail
- Stelzer
- Main
- Lockborn
- Harrisburg Pike
- Trabue
- Others – existing projects/Plans?

- Demographic Analysis of Gap Closure Projects

- Add Projects to Trail Ranking Analysis

Scope of Services: Prioritize Trail Projects



MORPC

SCOPE OF SERVICES: PRIORITIZE TRAIL PROJECTS – CRITERIA

Economy

- Access to Job Centers
- Proximity to Attractions*
- Property Values
- Regional trail access
- Total Population

Health

- Safety
- Proximity to populations with increased chronic illness
- Proximity to Grocery Stores
- Average Life expectancy

Equity

- Access to vulnerable populations
- Access to Transit
- Access to bike share

Environment

- Conservation/ Restoration Opportunity
- Sewer/watershed planning projects
- Utility Easements
- Air Quality

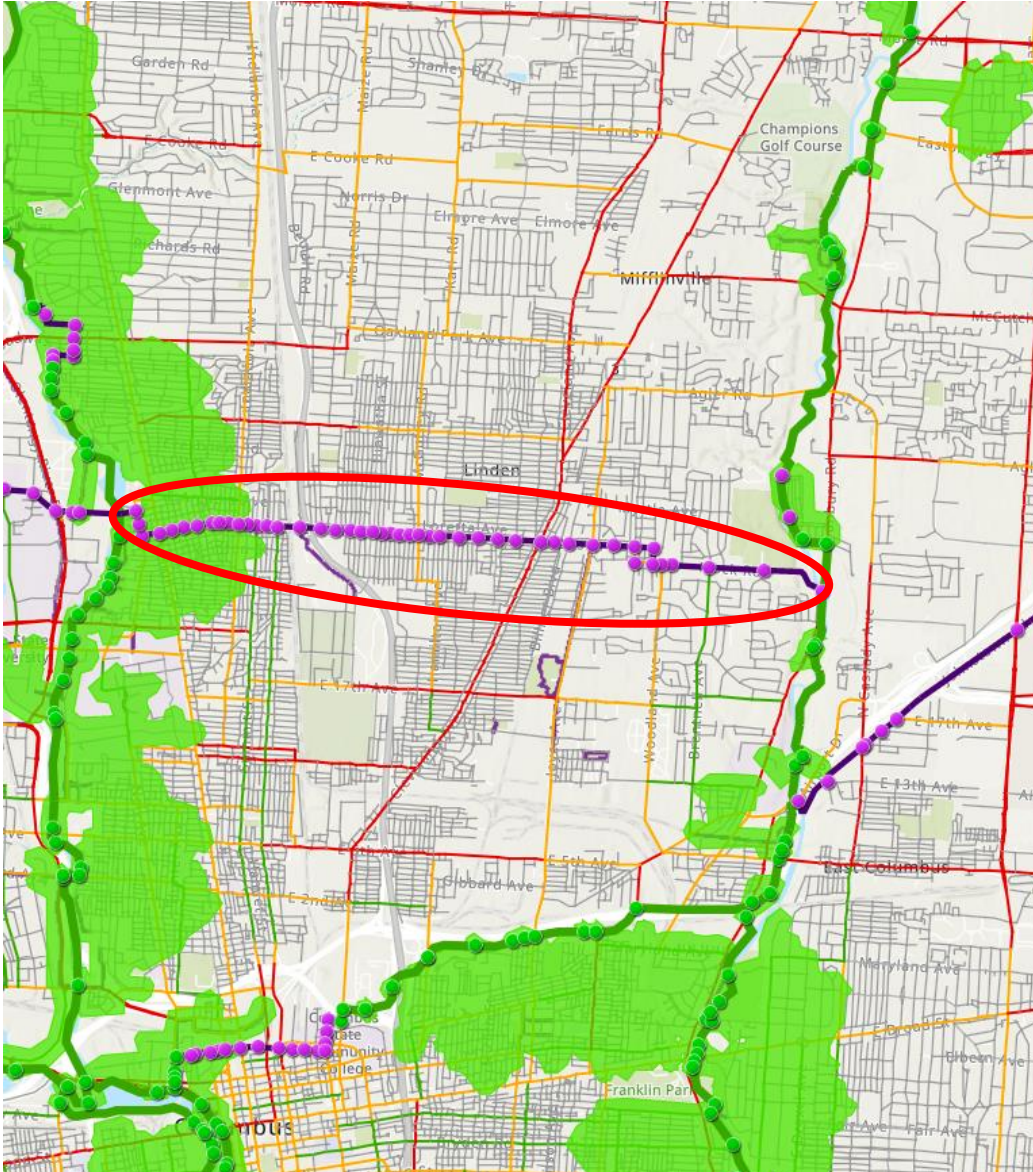
Other

- Available Funding
- Connectivity Score
- Trail Segment Length



MORPC

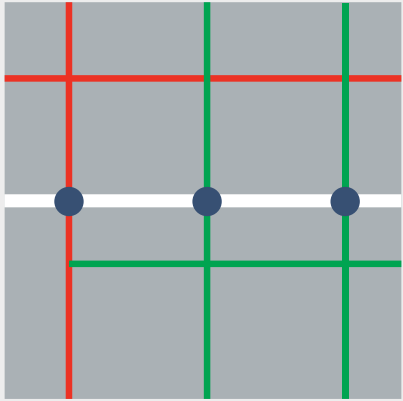
TRAIL RANKING: PROGRESS



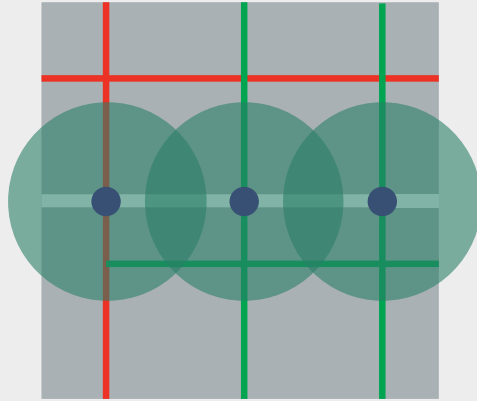
- **Next Steps**

- Segment the proposed Network
 - Existing Projects
 - Barriers
 - Access Points
 - Length?
- Develop Methodology
- Conduct Ranking Analysis

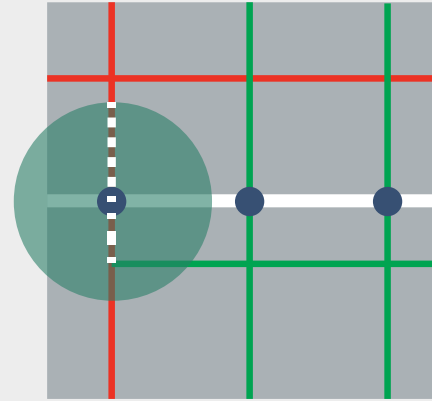
SCOPE OF SERVICES: PRIORITIZE 1ST / LAST MILE PROJECTS



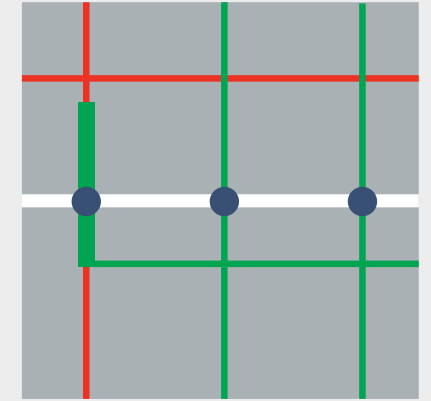
Map the Trail Network over the Bike Level of Comfort Map



Identify a 1-mile access buffer* around the access points



Identify 1-mile access routes that are not high comfort

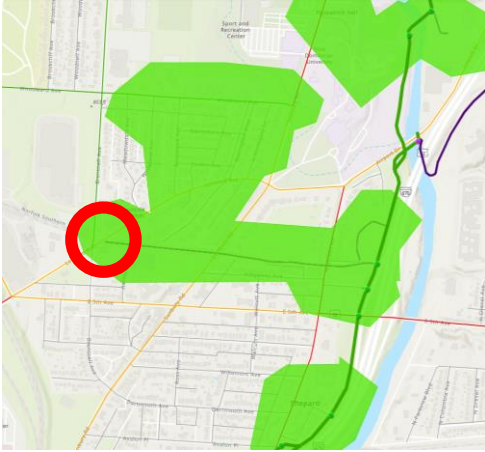


Rank the 1-mile project based on a process similar to trail ranking process

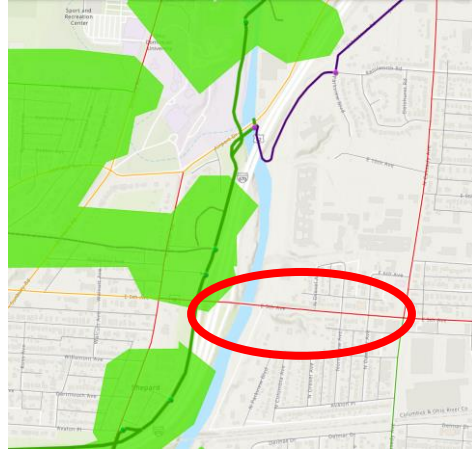


MORPC

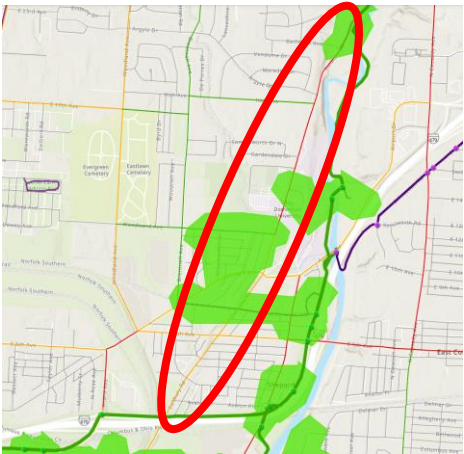
RANK 1ST MILE/ LAST MILE PROJECTS: PROGRESS



Spot Improvement
Crossing or Intersection



Partial Corridor Improvement
< ½ mile



Full Corridor Improvement
> ½ mile

- **Next Steps**

- Identify 1st Mile Last Mile Projects-
-Methodology
- Rank Projects



MORPC

SCOPE OF SERVICES: DEVELOP A CASE FOR SUPPORT

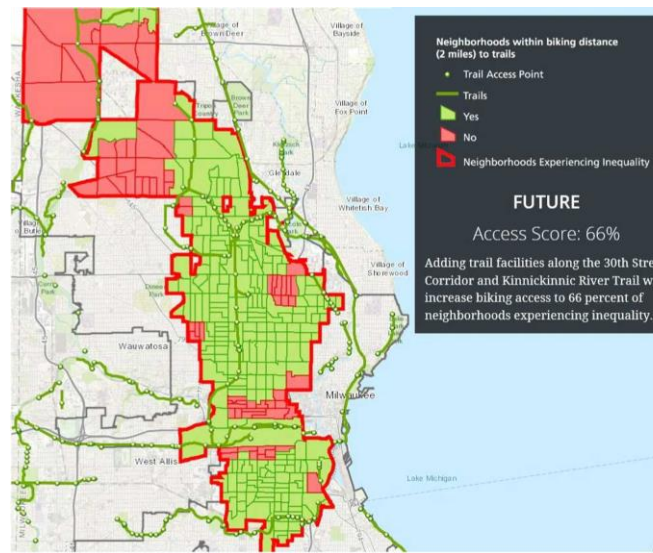
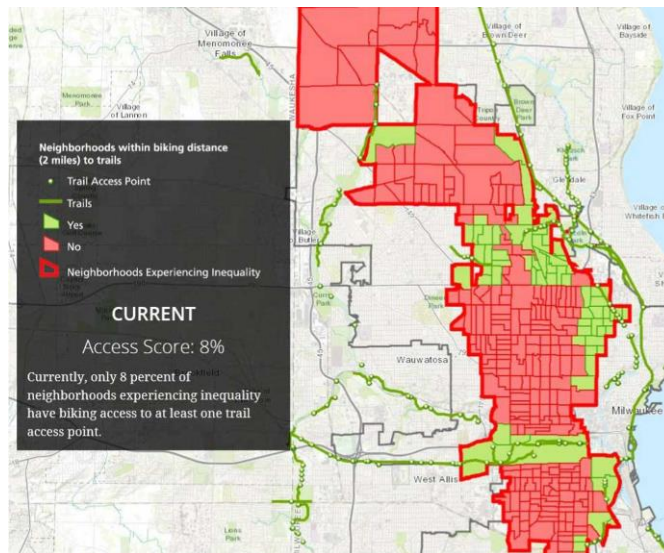
Visual tool such as:

- Story maps
- Brochures
- Presentations
- Reports

The audience:

- COG Board
- Local Governments
- Legislators
- Trail Funders
- Philanthropic Organizations

Materials may include information from the *Impact of Trails Study*



MORPC

Questions?





MID-OHIO REGIONAL
MORPC
PLANNING COMMISSION



PARKS ARE AN **ESSENTIAL BUSINESS**

MKSK

TODAY'S **SPEAKERS**



MKSK

Chris Hermann, AICP
Principal



MKSK

Andrew Overbeck, AICP
Principal

TODAY'S **AGENDA**

1 | LESSONS LEARNED FROM THE PANDEMIC

2 | HOW ARE CITIES AND PARK SYSTEMS RESPONDING?

3 | HOW CAN COLUMBUS IMPROVE?

4 | WHAT COULD THE FUTURE LOOK LIKE?

FULL PRESENTATION: [HTTPS://WWW.YOUTUBE.COM/WATCH?V=CGKSTGSOUSS](https://www.youtube.com/watch?v=CGKSTGSOUSS)

LESSONS LEARNED FROM THE PANDEMIC

3.77 MILLION
WORLDWIDE
CASES

Source: Johns Hopkins
University

74,600
DEATHS IN
THE U.S.

Source: Johns Hopkins
University

33.5 MILLION
UNEMPLOYMENT
CLAIMS

Source: CNN

4.8%
GDP DECLINE
2020 Q1

Source: WSJ

DISPROPORTIONATE DEATH RATES

AMONG AFRICAN AMERICAN POPULATION

Source: New York Times/
Columbus Dispatch/CDC

Proportion of African Americans in Overall Population vs.
Percentage of COVID-19 Deaths



Michigan

14% of the population
and 40% of deaths



Wisconsin

7% of the population and
33% of deaths



Ohio

12% of the population
and 20% of deaths

**Underlying health conditions that
increase vulnerability to COVID-19:**

Hypertension & Cardiovascular Disease

Obesity

Diabetes

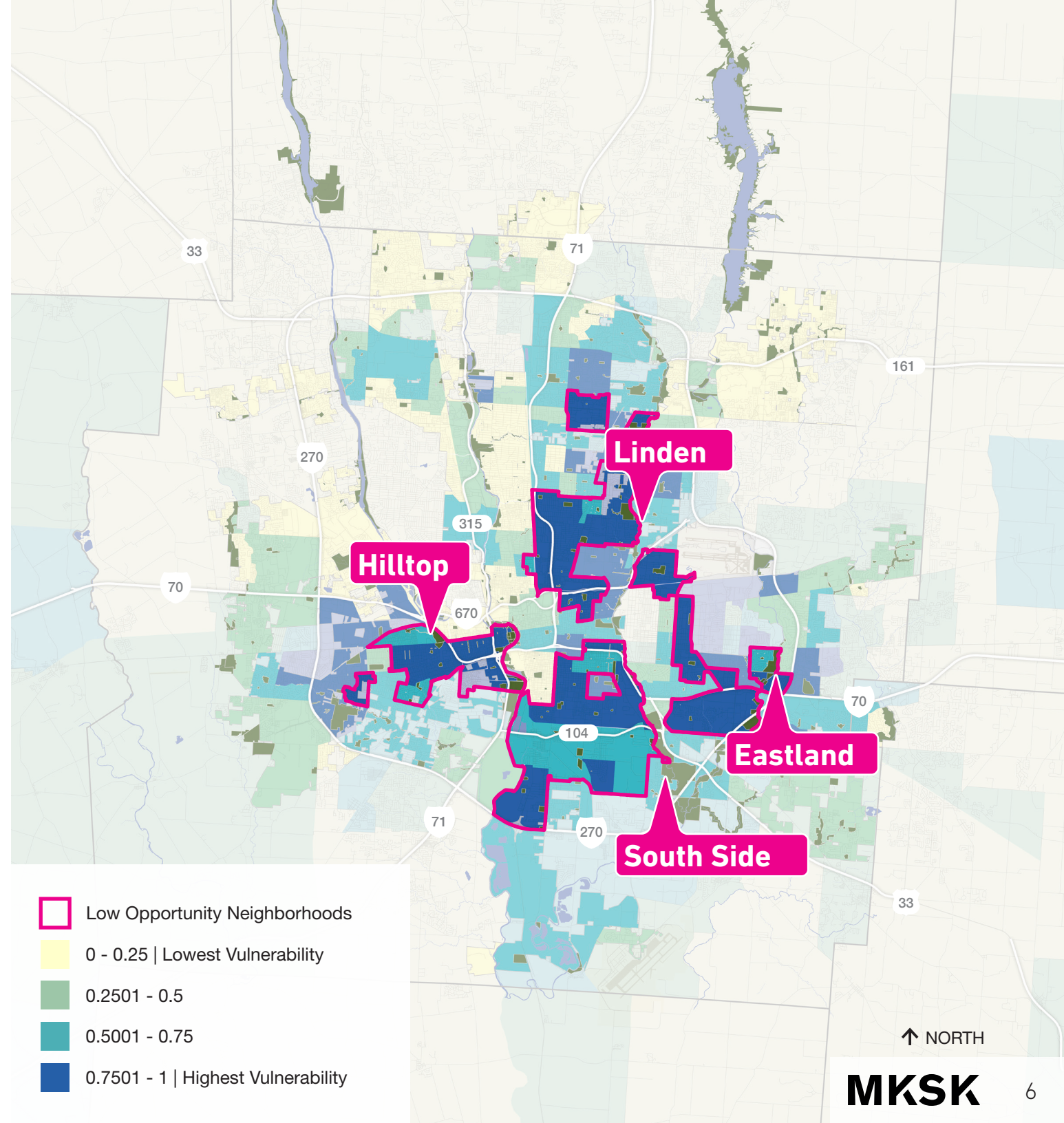
Chronic Lung Disease

LOW OPPORTUNITY NEIGHBORHOODS

Neighborhood tracts categorized
as “very low” opportunity.

Life expectancy in Very Low Opportunity
Neighborhoods in Columbus is **6 years lower** than
the county average

Source: kirwan institute 2019



PHYSICAL DETERMINANTS OF HEALTH

Natural environment, such as green space (e.g., trees and grass) or weather (e.g., climate change)

Built environment, such as buildings, **sidewalks, bike lanes, and roads**

Worksites, schools, and **recreational settings**

Housing and community design

Exposure to toxic substances and other physical hazards

Physical barriers, especially for people with disabilities

Aesthetic elements (e.g., good lighting, trees, and benches)

HEALTH BENEFITS OF PARKS

“An avalanche of findings over the past 30 years has bolstered with evidence what most of us feel the truth of in our bones... *that nature can soothe, buoy, and restore.*”

Colin Ellard, Neuroscientist
Urban Realities Laboratory
University of Waterloo, Toronto

physical

- Improve immune function
- Speed recovery from injury & illness
- Reduce obesity
- Promote healthier cardiac patterns
- Lower stress
- Increase fitness
- Reduce prevalence of obesity, cancer, diabetes and heart disease

mental

- Improve relaxation & restoration
- Increase neighborhood cohesion
- Promote pro-social behaviors
- Improve cognitive function
- Improve real and perceived safety
- Increase feelings of happiness
- Enhance trust, empathy & altruism

HEALTH BENEFITS OF PARKS

A vibrant outdoor community event in a park. In the foreground, a young boy is hula hooping with a red hoop while holding a blue can. Next to him, a young man is also hula hooping with a yellow hoop and holding a water bottle. In the background, a diverse group of people are socializing under large white event tents. The scene is set on a grassy field with trees visible in the distance.

**Take two trees and
call me in the morning**

“A rapidly growing body of evidence
establishes that...access to nature
can alleviate some of the most
important problems in public health”

American Public Health Association

HEALTH BENEFITS OF PARKS



Getting enough physical activity could prevent 1 in 10 premature deaths

Not Getting Enough Physical Activity Costs Money

177 billion dollars in annual health care costs are associated with inadequate physical activity.

Building active and walkable communities can help:

Increase levels of retail economic activity and employment

Increase property values

Support neighborhood revitalization

Reduce health care costs

HEALTH BENEFITS OF PARKS



Benefits for Children

- Reduces risk of depression
- Improves aerobic fitness
- Improves muscular fitness
- Improves bone health

- Promotes favorable body composition
- Improves attention and some measures of academic performance



Benefits for Adults

- Lowers risk of high blood pressure
- Lowers risk of stroke
- Improves aerobic fitness

- Improves mental health
- Improves cognitive function
- Reduces arthritis symptoms
- Prevents weight gain



Benefits for Healthy Aging

- Improves sleep
- Reduces risk of falling
- Improves balance
- Improves joint mobility

- Extends years of active life
- Helps prevent weak bones and muscle loss
- Delays onset of cognitive decline

IS ACCESS EQUITABLE?



IS ACCESS **EQUITABLE?**



“Living near blighted urban spaces generates recurrent surges in stress and, with them, ‘inflammatory changes and dysregulation of cardiovascular, neurological, and endocrine systems over a lifetime for persons repeatedly exposed.’”

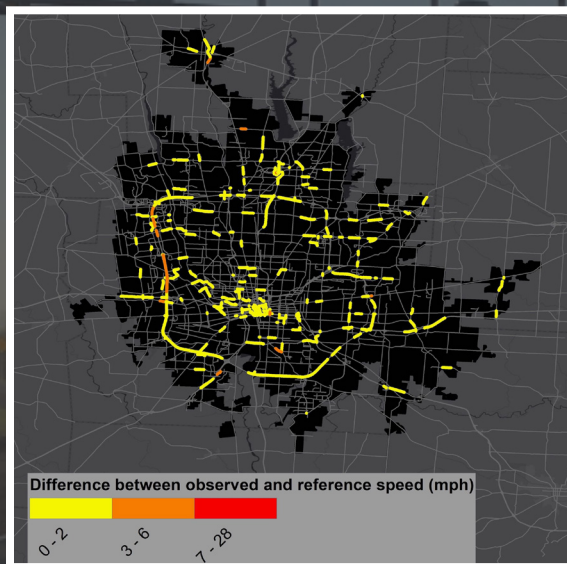
Eric Klinenberg, Palaces for the People referencing Neighborhood Blight, Stress, and Health: A Walking Trial of Urban Greening and Ambulatory Heart Rate (South, Kondo, Cheney, Branas)



ARE OUR TRAILS WIDE ENOUGH?



ARE OUR STREETS SAFE?



Before (2019)



After (2020)

17.8%
SPEEDING ROAD SEGMENTS
3/28 TO 4/19 (2019)



57%
SPEEDING ROAD SEGMENTS
3/28 TO 4/19 (2020)

Since the beginning of shelter-in-place orders, state data is showing that:

Traffic volumes are lower

Crash rates are higher

Injury and fatality rates are higher

Evidence points to higher rates of speeding

In Columbus, 5 pedestrians have been killed by drivers so far in 2020.

Sources: Columbus Dispatch, Streetsblog, ODOT, Center for Urban and Regional Analysis, The Ohio State University

DO WE HAVE ENOUGH **BIG PARKS?**



WHETSTONE PARK

DO WE HAVE ENOUGH **BIG PARKS?**



SCIOTO GREENWAY

PAST PUBLIC HEALTH CRISES INFLUENCED URBAN PLANNING AND DESIGN

“The urban parks movement, led by Olmsted, was built on the notion that green space was the respiratory apparatus for any urban environment, the prerequisite for expectations of sound collective health.”

– Ginia Bellafante, New York Times

Photo by Jermaine Ee on Unsplash

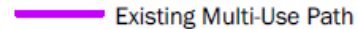
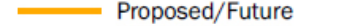
4 | WHAT COULD THE FUTURE LOOK LIKE?



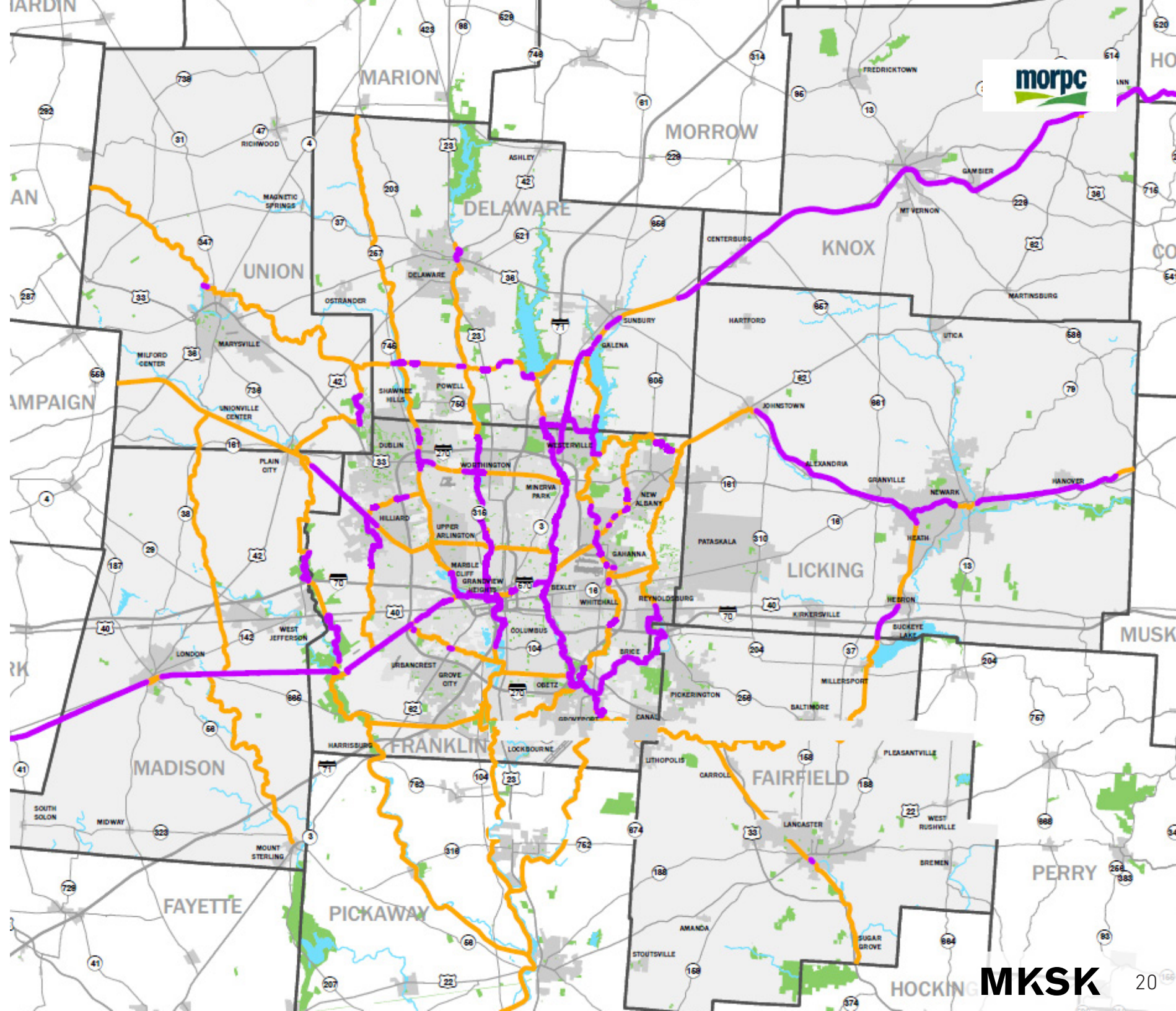
CENTRAL OHIO GREENWAYS VISION

11.6M
TRAIL MILES
TRAVELED IN 2017

500
TRAIL MILES
PLANNED

Regional Trail of Significance
 Existing Multi-Use Path
 Proposed/Future

733 Total Miles
 233 Existing Multi-use Path
 500 Proposed/Future



CRPD LAND PLAN

EXISTING ACCESS

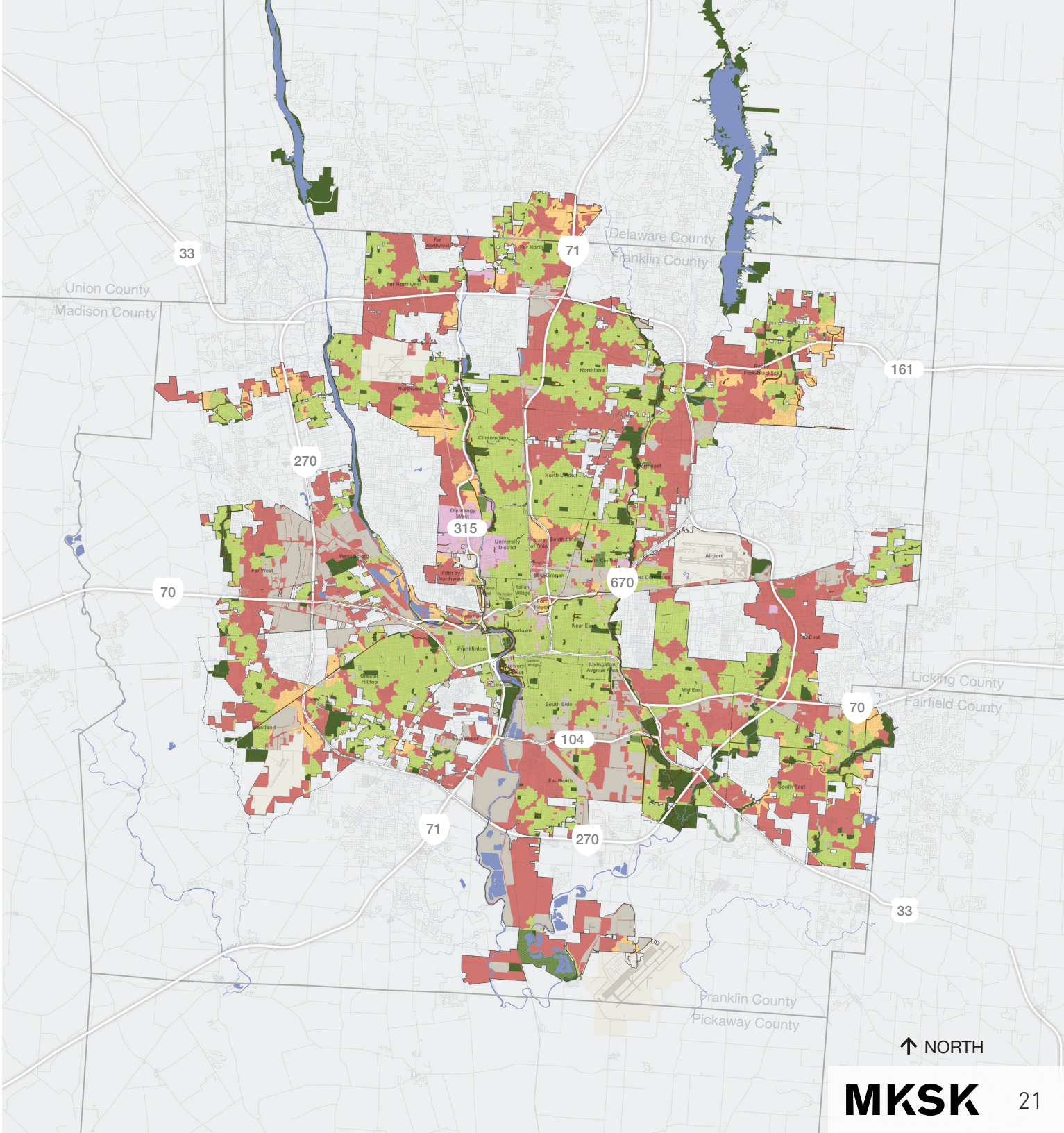
Walkshed Analysis: Existing (2018)



Residents within Walkshed: 64.5%

Residents Outside Walkshed: 35.5%

- Industrial Land Uses
- Airports
- College & University Campus
- Cemetery
- CRPD Parks with Public Access
- Other CRPD Parks/Easements
- CRPD Parks - 10-Minute Walksheds
- CRPD Trails: Existing
- CRPD Trails - 10-Minute Walksheds
- Areas outside 10-Minute Walksheds
- Properties of Interest (POI)
- POI - 10-Minute Walksheds
- CRPD Trails: Potential
- Potential CRPD Trails - 10-Minute Walksheds



POTENTIAL ACCESS

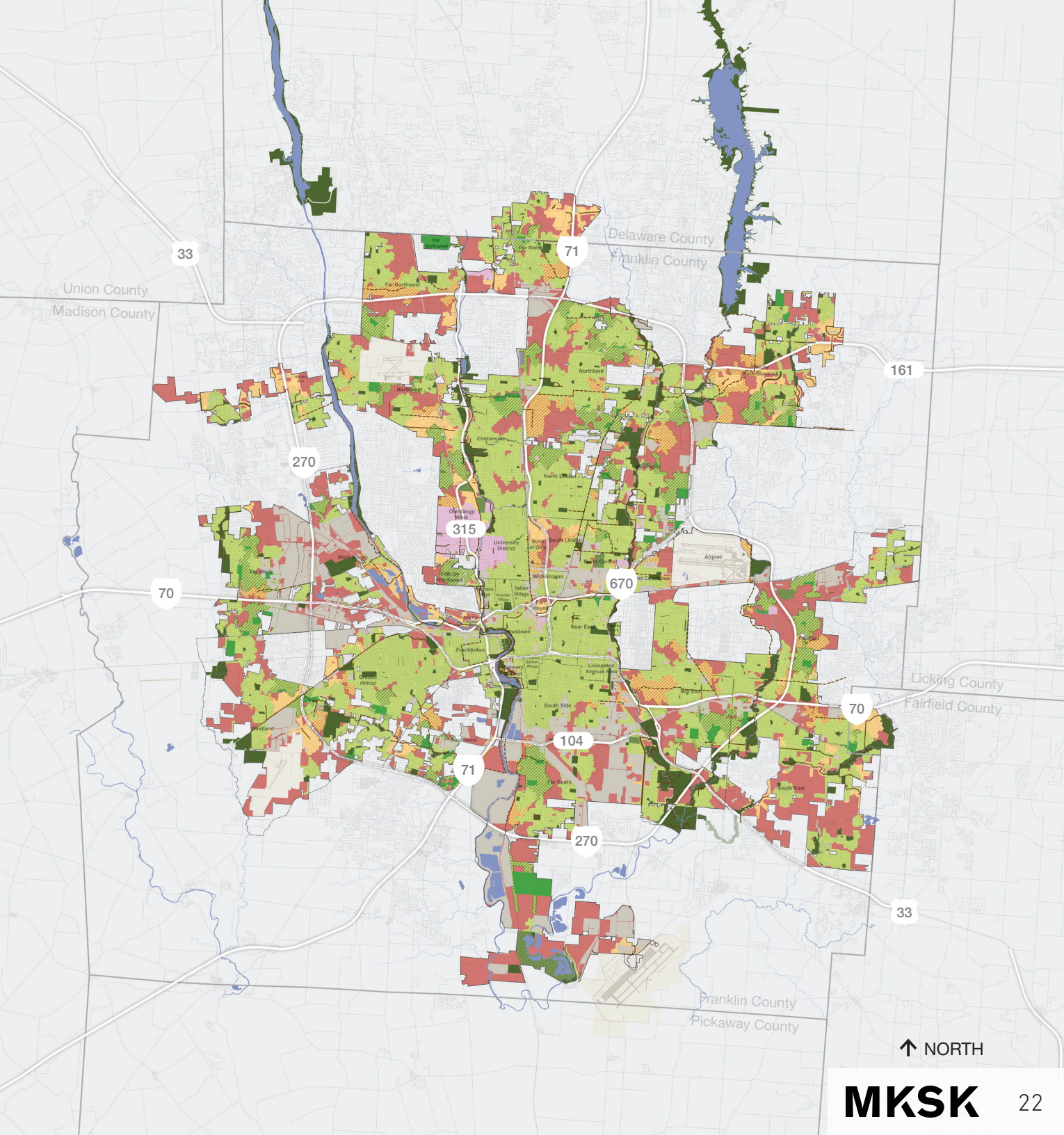
Walkshed Analysis: Potential with
Properties of Interest & Trails (2023)



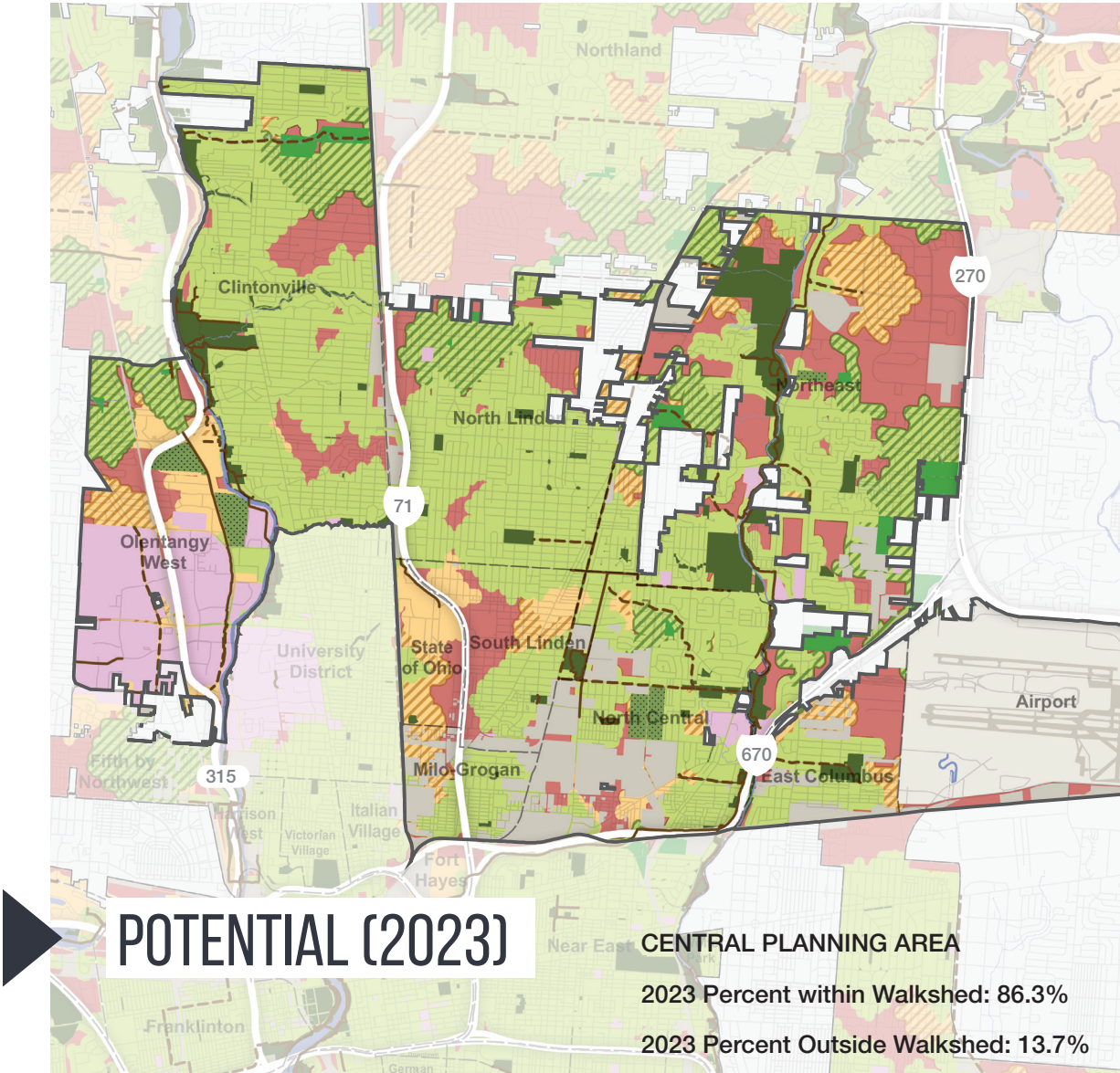
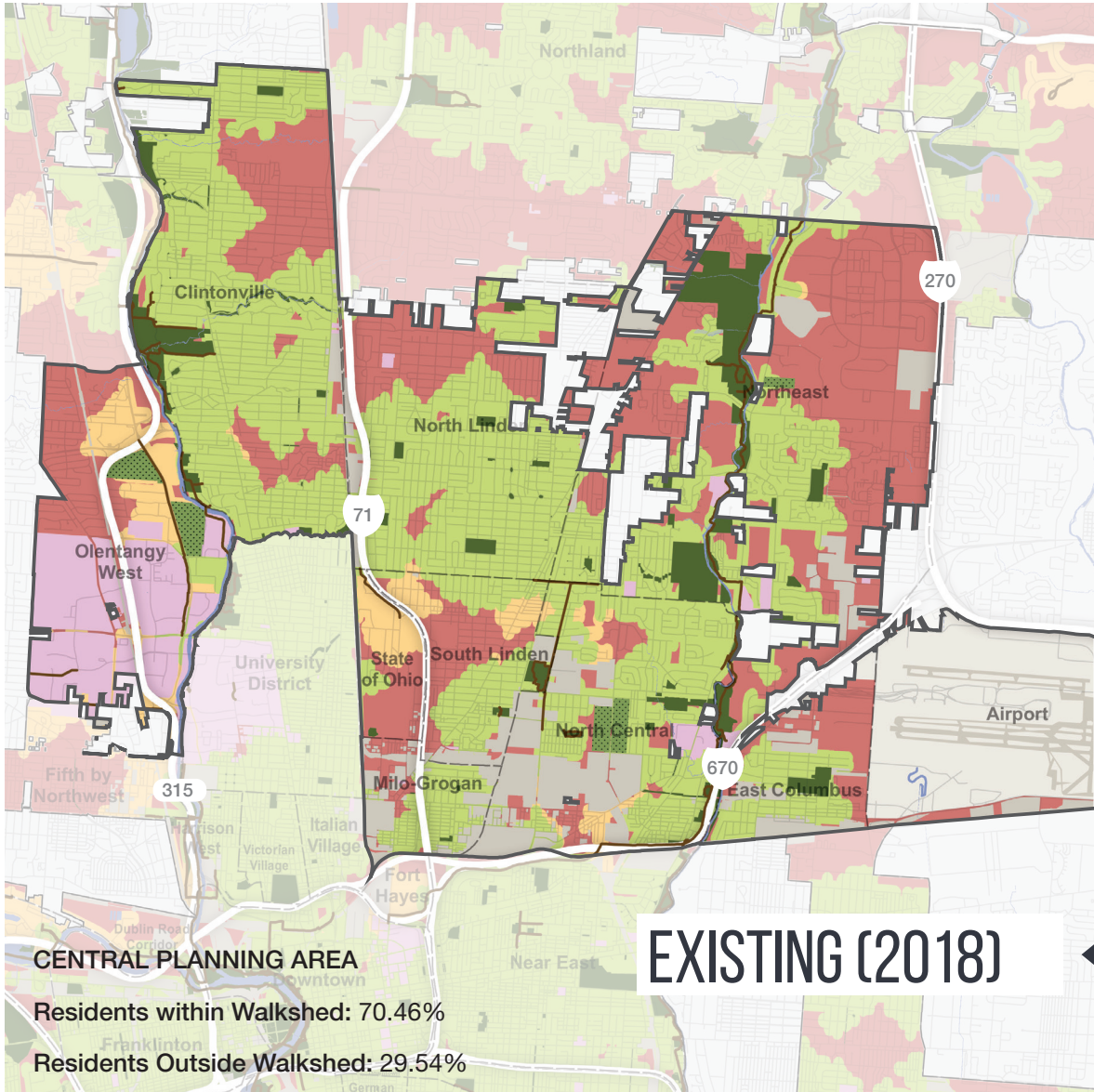
2023 Percent within Walkshed: 79%
2023 Percent Outside Walkshed: 21%

POI Acres: 2,263 Acres
Potential Trail Miles: 96 Miles
POI & Pot. Trail Impact: +14.5%



- | | |
|----------------------------------|---|
| Industrial Land Uses | CRPD Trails: Existing |
| Airports | CRPD Trails - 10-Minute Walksheds |
| College & University Campus | Areas outside 10-Minute Walksheds |
| Cemetery | Properties of Interest (POI) |
| CRPD Parks with Public Access | POI - 10-Minute Walksheds |
| Other CRPD Parks/Easements | CRPD Trails: Potential |
| CRPD Parks - 10-Minute Walksheds | Potential CRPD Trails - 10-Minute Walksheds |

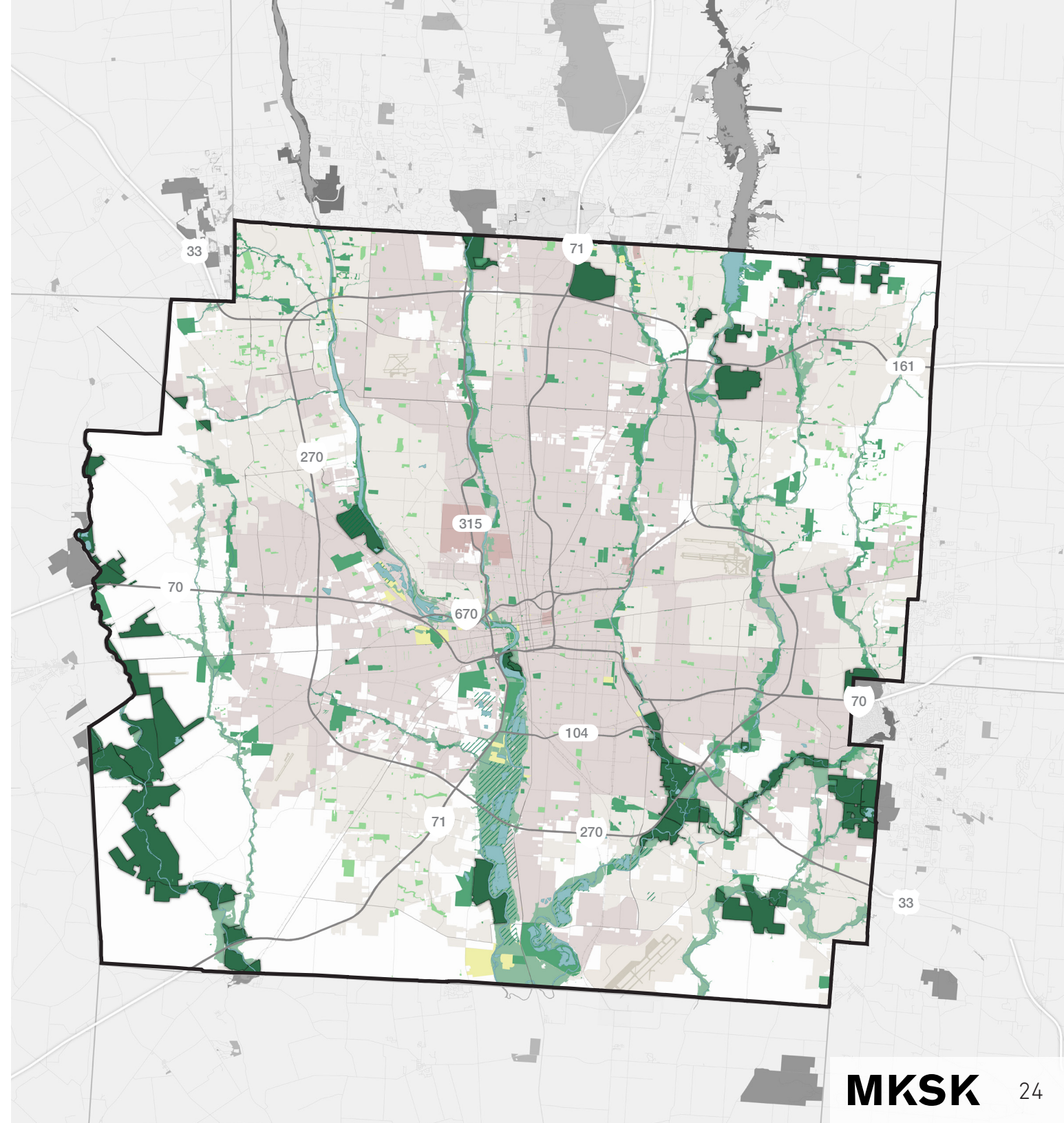


EXISTING VS. POTENTIAL ACCESS



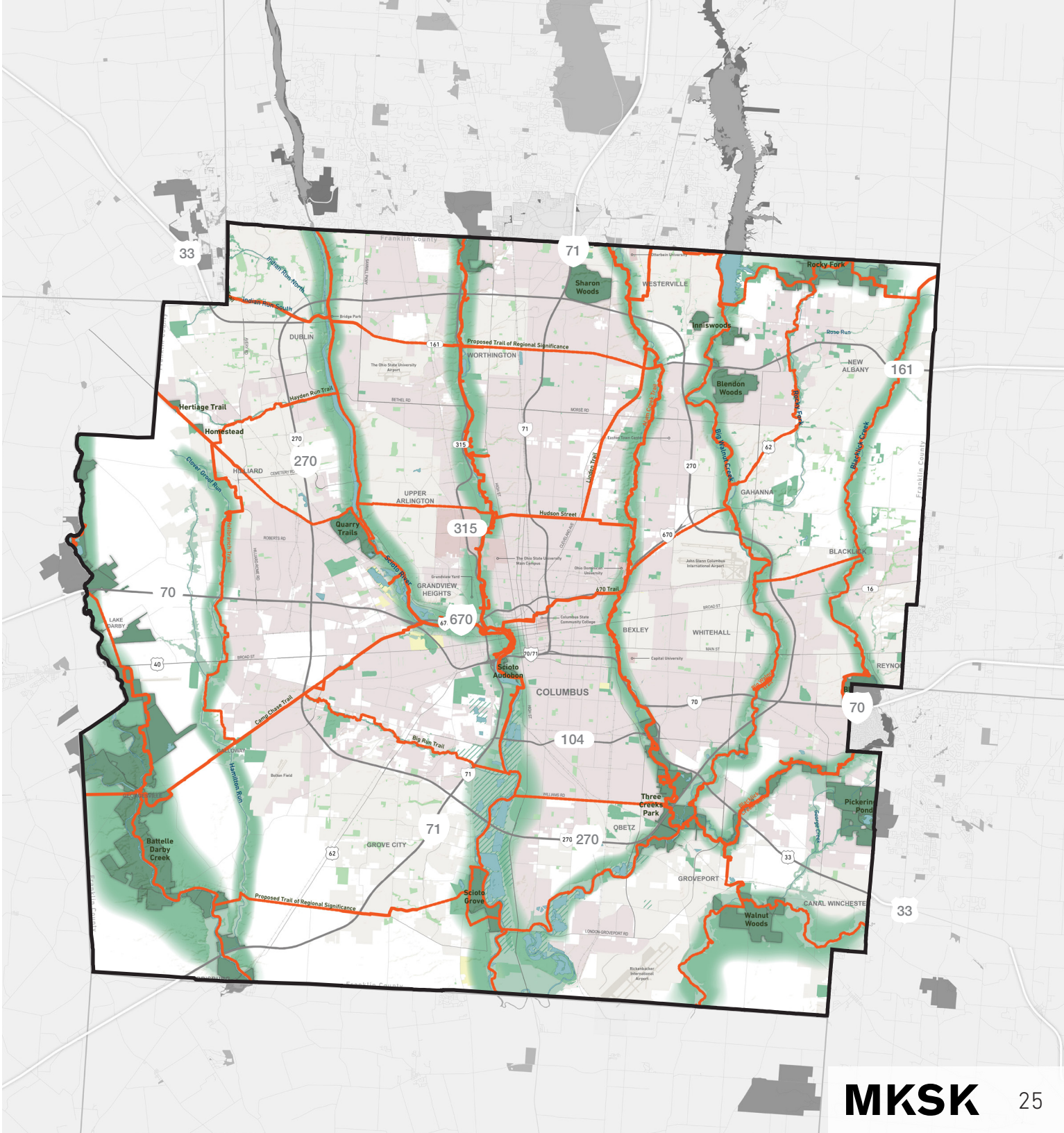
REGIONAL OPEN SPACE

-  Metro Park
-  Other Open Space



CENTRAL OHIO GREENWAYS VISION

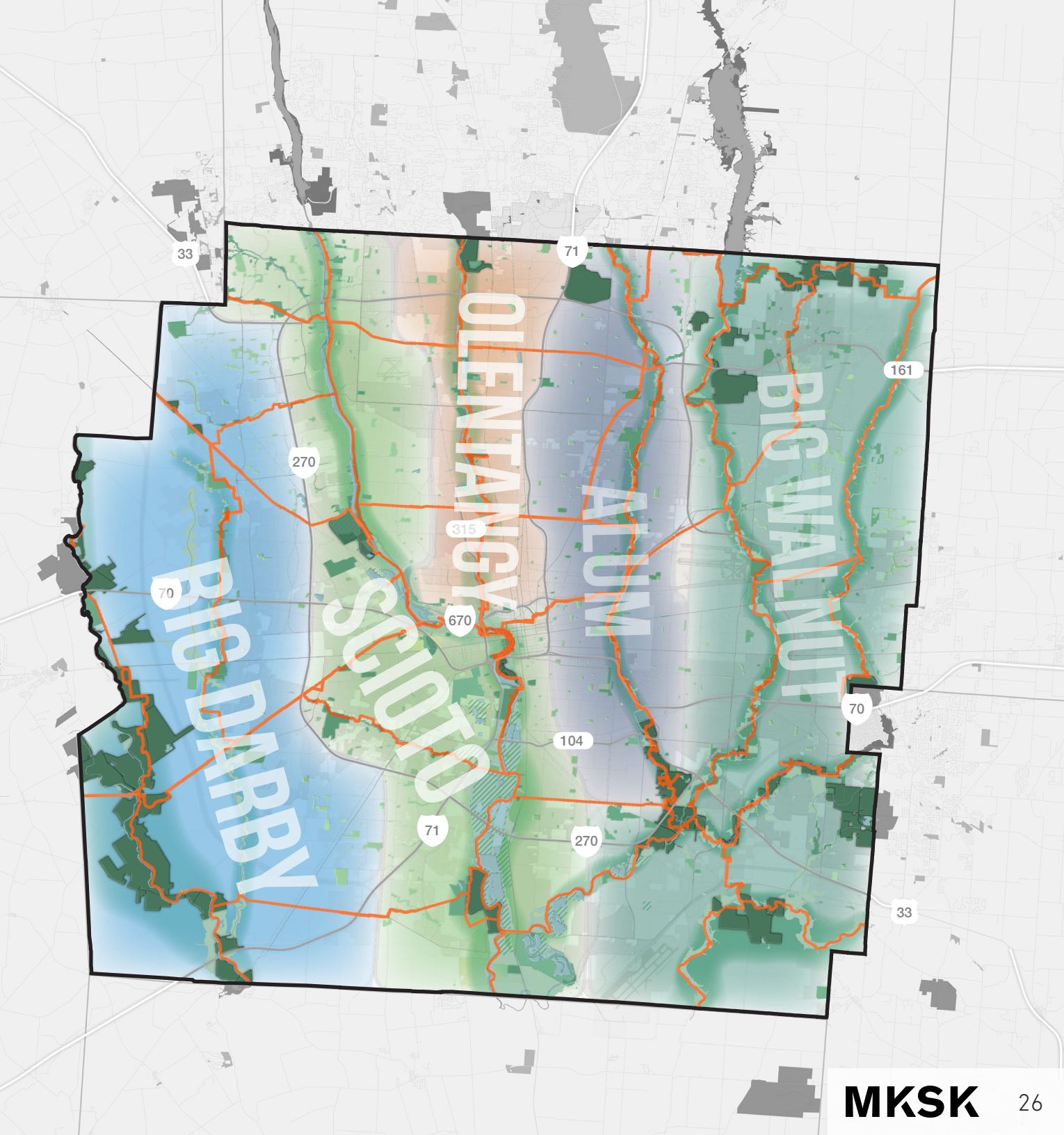
- Metro Park
- Other Open Space



BLUEWAY CORRIDORS

50%+
OF THESE CORRIDORS ARE IN
PUBLIC OWNERSHIP

- Metro Park
- Other Open Space



BENEFITS IMPROVING OUR COMMUNITY



**HEALTH &
WELLNESS**



**MOBILITY
CHOICE**



**ENVIRONMENTAL
STEWARDSHIP**



**ECONOMIC
VITALITY**



**SOCIAL
EQUITY**

PEOPLE & PLACES IMPACTED IN OUR COMMUNITY



**STUDENTS &
SCHOOLS**



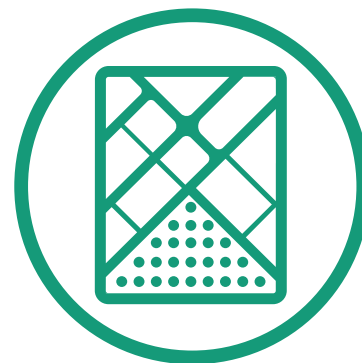
**EMPLOYEES &
BUSINESSES**



**RESIDENTS &
NEIGHBORHOODS**

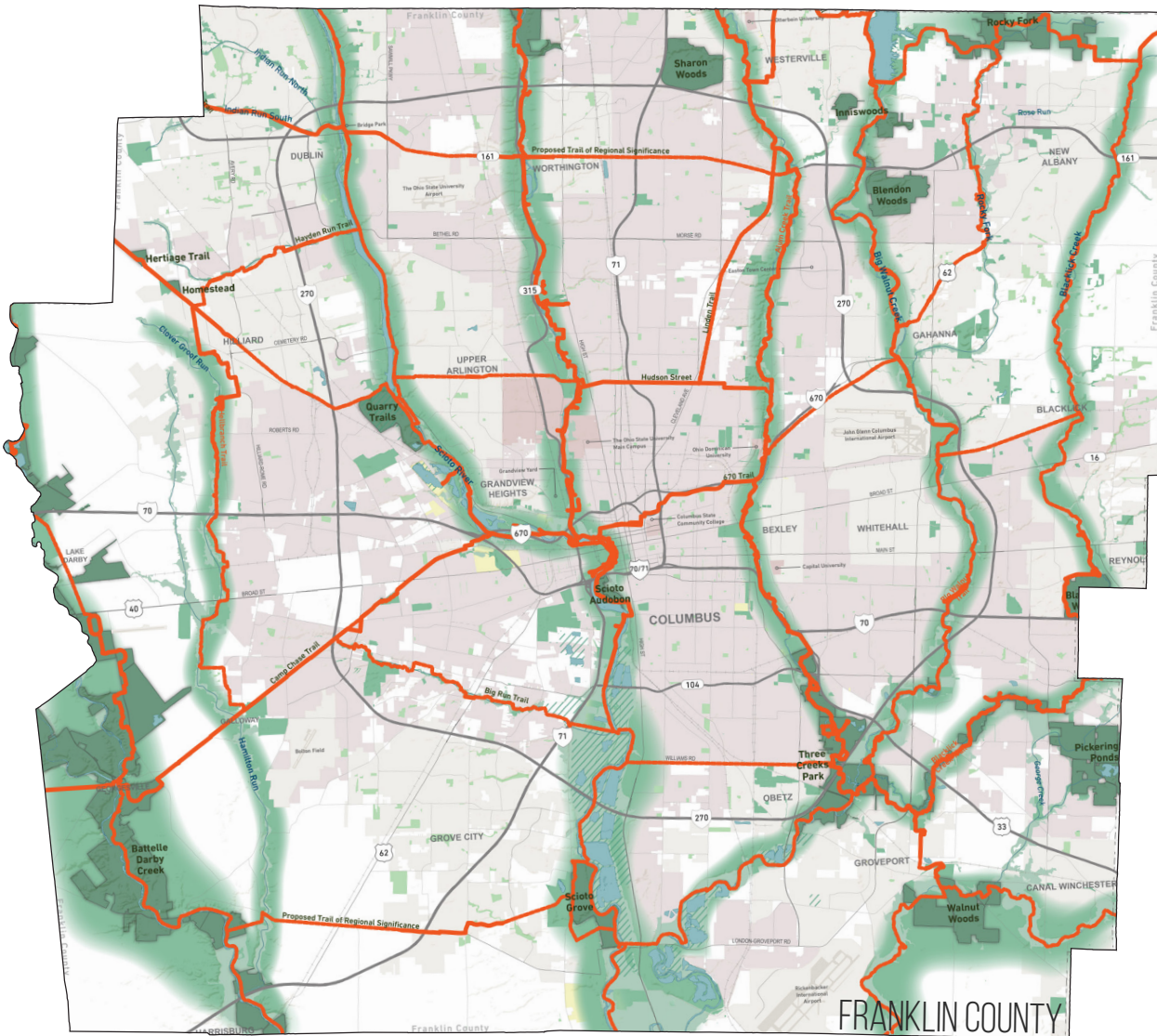


**CULTURAL
INSTITUTIONS**



**LOW OPPORTUNITY
NEIGHBORHOODS**

OUR SYSTEM **TOMORROW**



320 SCHOOLS

WITHIN 1/4 MILE OF EXISTING PARK OR TRAIL
45 (16%) MORE THAN TODAY



660K JOBS

WITHIN 1/4 MILE OF EXISTING PARK OR TRAIL
135K (26%) MORE THAN TODAY



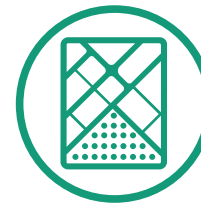
1.108M RESIDENTS

WITHIN 1/4 MILE OF EXISTING PARK OR TRAIL
268K (32%) MORE THAN TODAY



590 ACTIVITY CENTERS

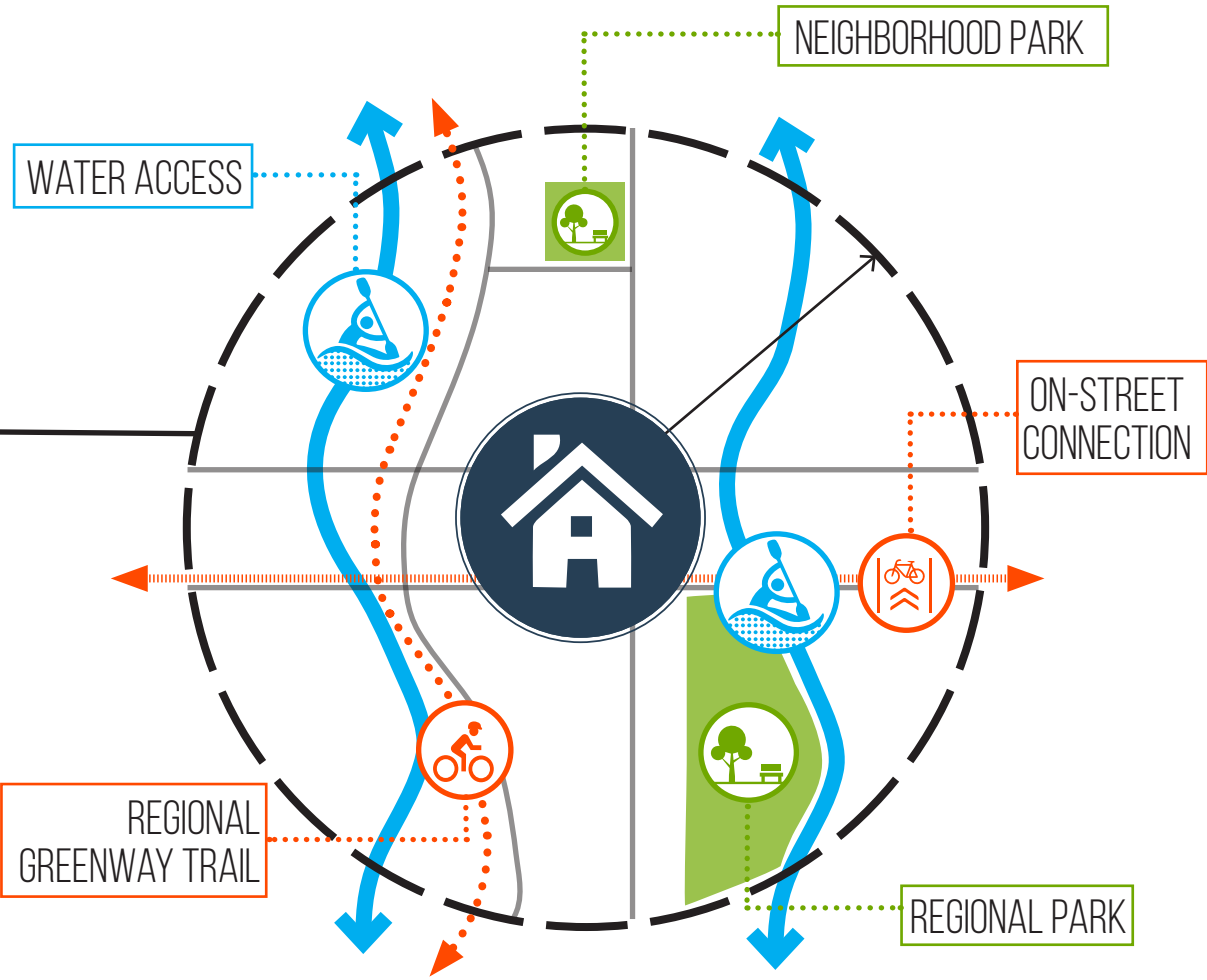
WITHIN 1/4 MILE OF EXISTING PARK OR TRAIL
90 (18%) MORE THAN TODAY



MORE THAN 77% OF LOW OPPORTUNITY NEIGHBORHOODS

WITHIN 1/4 MILE OF EXISTING PARK OR TRAIL
28% MORE THAN TODAY

OUR SYSTEM **TOMORROW**



PARKS ARE AN **ESSENTIAL BUSINESS**



“We can start working on the gaps in everyday livability that have been exposed by the **coronavirus**—and today’s livability is tomorrow’s resilience.” - Tom Vanderbilt

