



MID-OHIO REGIONAL
MORPC
PLANNING COMMISSION

111 Liberty Street, Suite 100
Columbus, Ohio 43215
morpc.org

T. 614. 228.2663
TTY. 1.800.750.0750
info@morpc.org

Energy and Air Quality Working Group Meeting
Mid-Ohio Regional Planning Commission
Microsoft Teams Meeting
Tuesday, July 28th, 2020
2:00pm

AGENDA

1. **Welcome.** *Dale Arnold, Chair (2:00 pm)*
2. **Featured: Impacts of Past Policy on Present Community Health.** *Jon-Paul d'Aversa, MORPC (2:05 pm)*
3. **Ohio EPA Update,** *Erica Fetty-Davis, Ohio EPA (2:30pm)*
4. **Policy Update,** *Joe Garrity, MORPC (2:35 pm)*
5. **Building in Equity,** *Dale Arnold and Matt Stephens-Rich (2:40pm)*
 - a. **Subcommittee,** *Jon-Paul d'Aversa, MORPC (2:45pm)*
 - b. **Environmental Justice Policy for Roundtable,** *Dale Arnold, Chair (2:55pm)*
 - c. **Member Recruitment,** *Nolan Rutschilling, Ohio Hospitals (3:05pm)*
 - d. **Member Discussion,** *All, (3:15pm)*
6. **Adjourn (3:30pm)**

Please Notify Brooke White 614-233-4168 or bwhite@morpc.org to confirm your attendance.

The next Energy and Air Quality Meeting is
September 22nd, 2020 2:00pm

The meeting will be held virtually using the Microsoft Teams Meeting platform. Please contact Brooke White for assistance.

William Murdock, AICP
Executive Director

Rory McGuinness
Chair

Karen J. Angelou
Vice Chair

Erik J. Janas
Secretary

WELCOME!

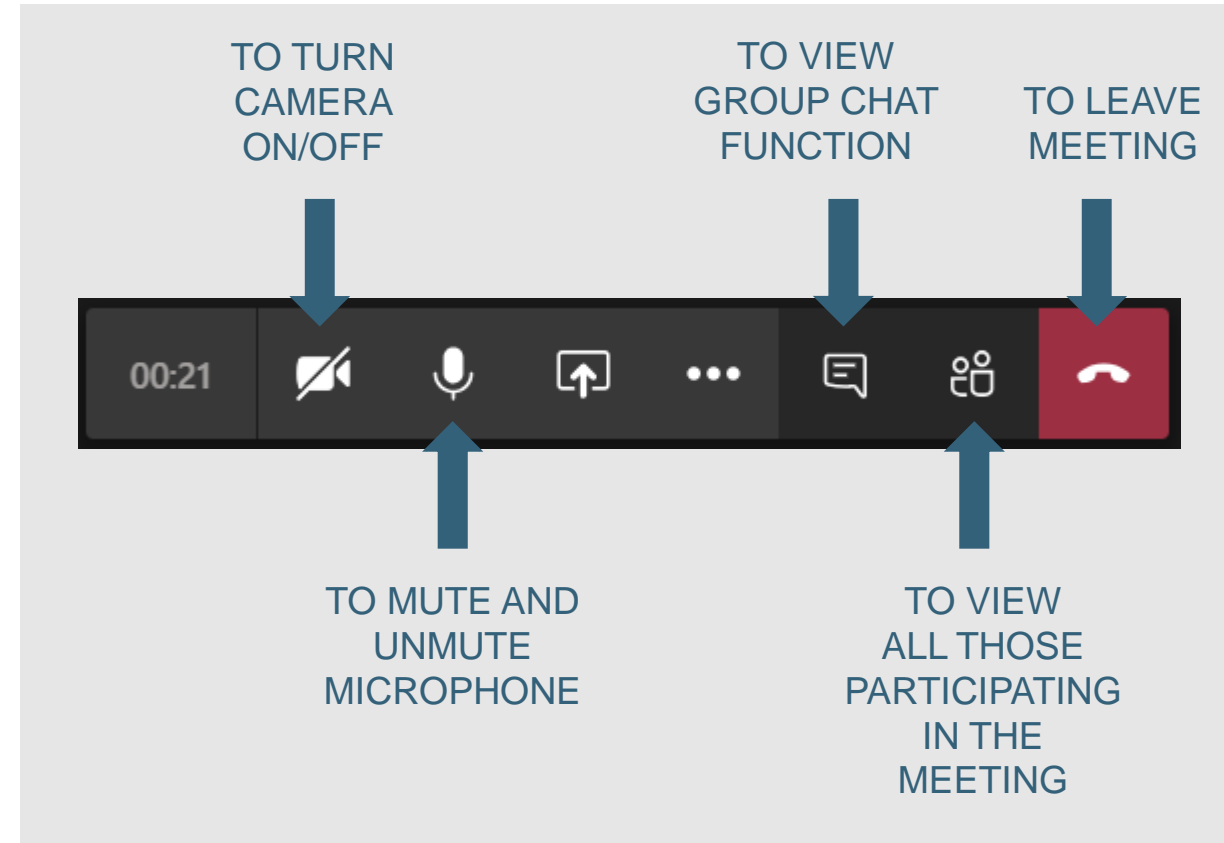


The E&AQ Working Group meeting will begin shortly.

- Please **mute** your microphone or telephone unless speaking.
- Please turn off your camera unless presenting.
- **If using a phone line** for audio: Both mute the microphone on Teams and turn the volume all the way down on your computer.

You may need to press *6 to unmute yourself during the meeting.

- **Questions** can be input into the chat function.



AGENDA



MORPC

1. **Welcome.** *Dale Arnold, Chair (2:00 pm)*
2. **Featured: Impacts of Past Policy on Present Community Health .** *Jon-Paul d'Aversa, MORPC (2:05 pm)*
3. **Policy Update,** *Joe Garrity, MORPC (2:30 pm)*
4. **Ohio EPA Update,** *Erica Fetty-Davis, Ohio EPA (2:35pm)*
5. **Building in Equity,** *Dale Arnold and Matt Stephens-Rich (2:40pm)*
 - a. **Subcommittee,** *Jon-Paul d'Aversa, MORPC (2:45pm)*
 - b. **Environmental Justice Policy for Roundtable,** *Dale Arnold, Chair (2:55pm)*
 - c. **Member Recruitment,** *Nolan Rutschilling, Ohio Hospitals (3:05pm)*
 - d. **Member Discussion,** *All, (3:15pm)*
6. **Adjourn (3:30pm)**

Featured Presentation



Impacts of Past Policy on Present Community Health

Jon-Paul d'Aversa
Senior Energy Planner
MORPC



Impacts of Past Policy on Present Community Health

Originally presented as a part of:



Energy Academy
EFFECTS OF NON-EQUITABLE
SYSTEMS



Past Policies

- Federal Housing Administration

- National Housing Act of 1934
- Underwriting Manual provided to appraisers:

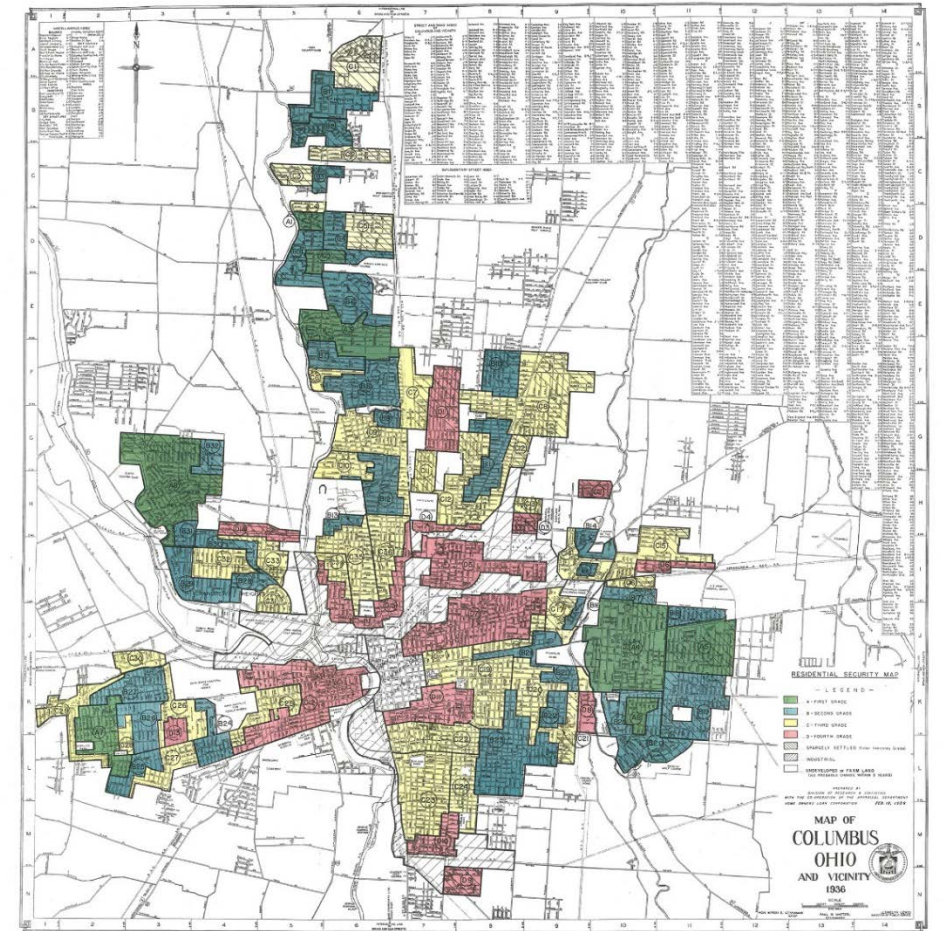
"If a neighborhood is to retain stability it is necessary that properties shall continue to be occupied by the same social and racial classes. A change in social or racial occupancy generally leads to instability and a reduction of values."

- GI Bill (1944)

- Response to WWI and WWII
- Provided low-cost mortgages, tuition, living expenses, business loans, and unemployment compensation
- Due to Jim Crow laws and discrimination at state/local levels, only benefited white, male Americans

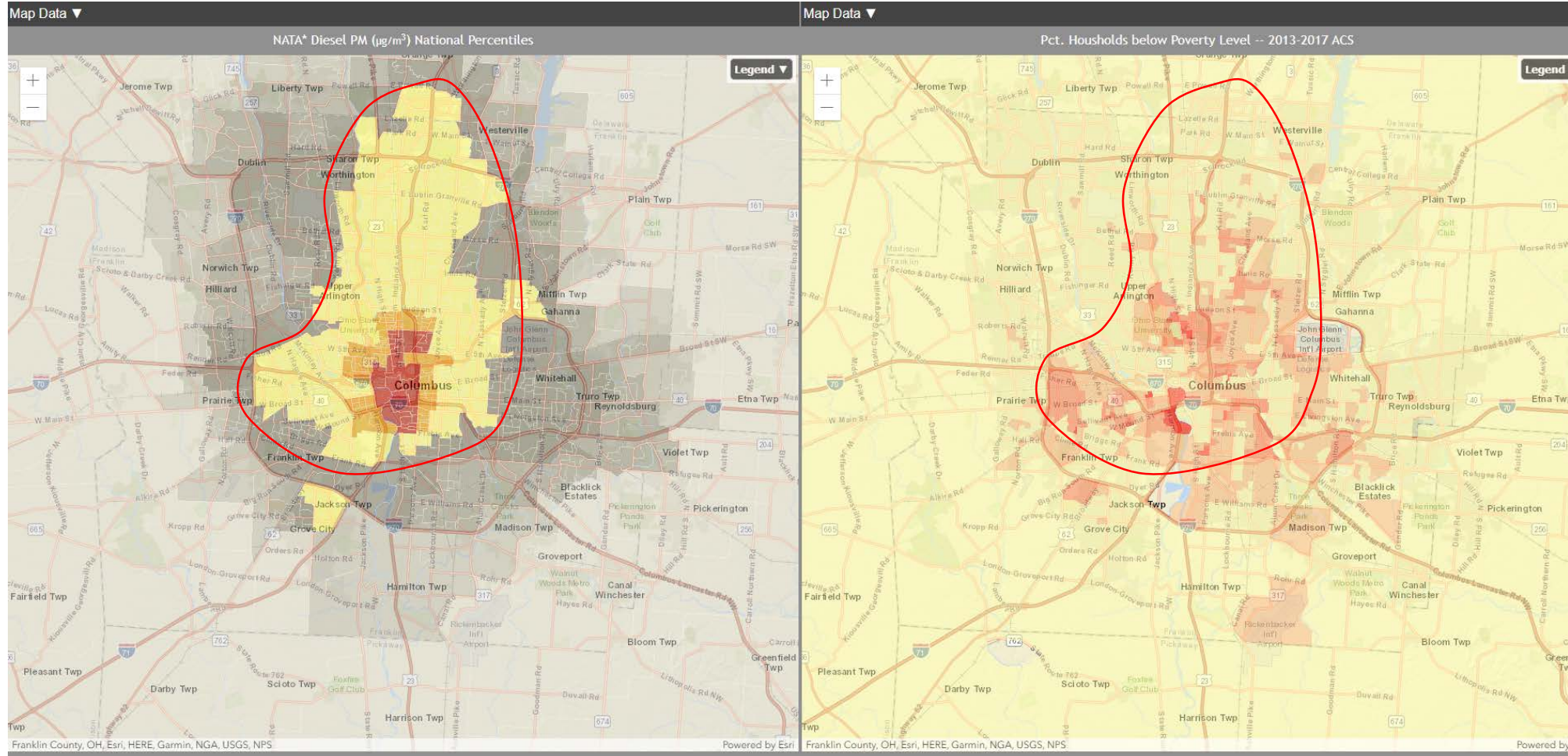
Bearing the Impacts of Emissions

- A policy of poverty
 - Redlining, Deed Restrictions
 - Exclusion from political processes
 - Employment barriers
 - Wealth leaves communities for suburbs
- Result:
 - Highways built through or adjacent
 - Homes forgo repairs due to trade offs or lack of investment by landlords





EJScreen



IMPACTS OF PAST POLICY ON PRESENT COMMUNITY HEALTH

Bearing the Impacts of Emissions

- How does this impact health?

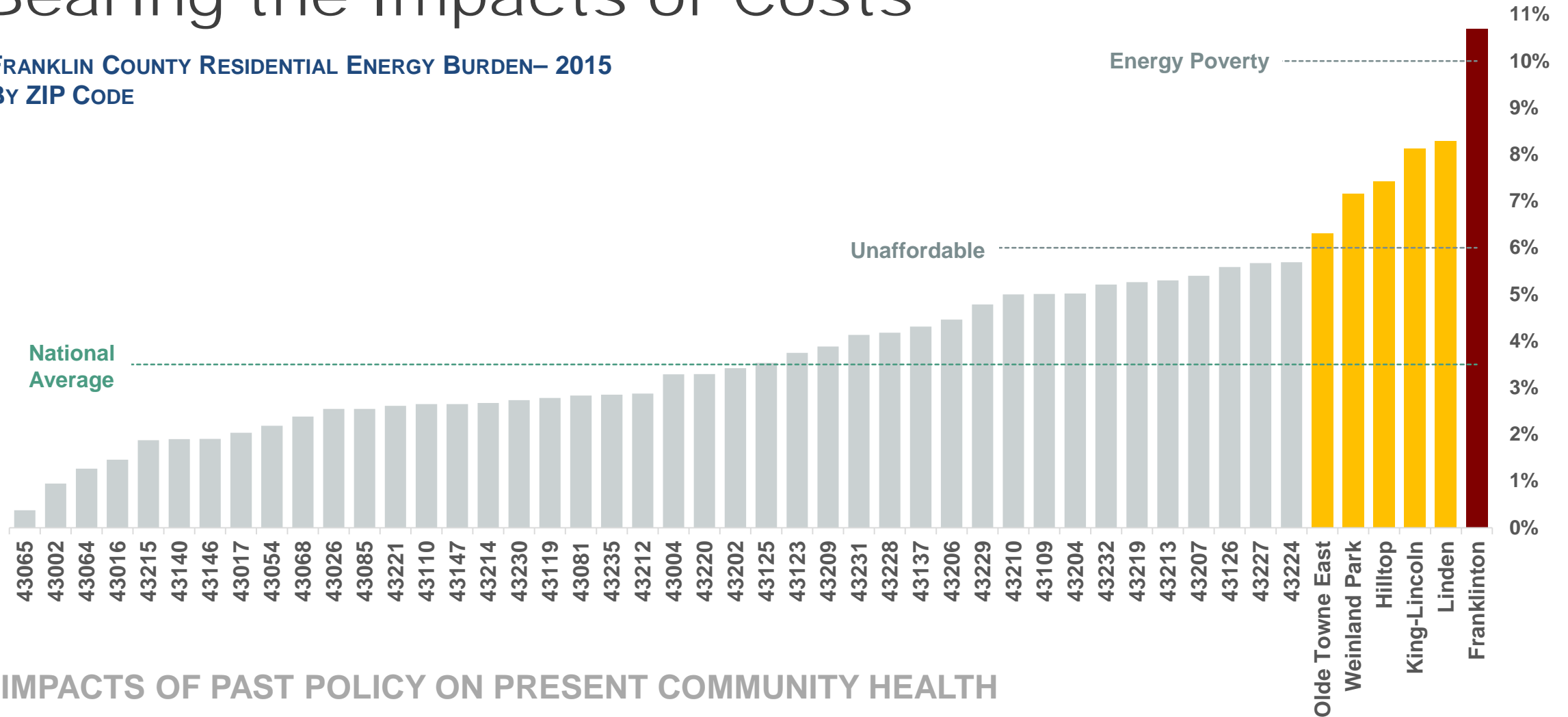
Decrease in Air Quality	Increased Respiratory Symptoms	Other Increased Health Risks	Immediate and Short Term Outcomes
<u>Outdoor</u> Ozone Smog Particulate Matter Heat Exposure <u>Indoor</u> Moisture/Mold Condensation VOCs Dust Allergens Particulates Formaldehyde Radon	Asthma COPD Bronchitis Throat Irritation Nasal Allergies	Colds Headaches Heart Disease Hypertension Sinusitis Fatigue Mental Health Lung Cancer	Increased ER Visits Increased Health Costs Increased School Absenteeism Increased Work Absenteeism Exacerbation of Other Health Issues

IMPACTS OF PAST POLICY ON PRESENT COMMUNITY HEALTH



Bearing the Impacts of Costs

FRANKLIN COUNTY RESIDENTIAL ENERGY BURDEN— 2015
BY ZIP CODE



IMPACTS OF PAST POLICY ON PRESENT COMMUNITY HEALTH

Bearing the Impacts of Costs

- Affordable housing tends to be older
 - People are put in a situation of choosing between energy bills, food, medicine and rent
- We've historically prioritized roads over sidewalks, trails and bus routes



Bearing the Impacts of Costs

- Cleaner options tend to be more expensive
 - We can't leave people behind as the world electrifies
- Design issues with efficiency programs
 - Typically require a purchase
 - Split incentive issue
 - Currently, mandatory efficiency programs set to end in Dec 2020



Review

- Systemic racism leads to a policy of poverty
- Homes fall into disrepair, emissions concentrate
- LIC and communities of color experience disproportionate health impacts
- Social mobility barriers persist

JON-PAUL d'AVERSA, AICP

Senior Energy Planner

Mid-Ohio Regional Planning Commission

T: 614.233.4137

jpdaversa@morpc.org

111 Liberty Street, Suite 100

Columbus, OH 43215



MID-OHIO REGIONAL
MORPC
PLANNING COMMISSION



AGENDA



MORPC

1. **Welcome.** *Dale Arnold, Chair (2:00 pm)*
2. **Featured: Impacts of Past Policy on Present Community Health.** *Jon-Paul d'Aversa, MORPC (2:05 pm)*
3. **Ohio EPA Update,** *Erica Fetty-Davis, Ohio EPA (2:30pm)*
4. **Policy Update,** *Joe Garrity, MORPC (2:35 pm)*
5. **Building in Equity,** *Dale Arnold and Matt Stephens-Rich (2:40pm)*
 - a. **Subcommittee,** *Jon-Paul d'Aversa, MORPC (2:45pm)*
 - b. **Environmental Justice Policy for Roundtable,** *Dale Arnold, Chair (2:55pm)*
 - c. **Member Recruitment,** *Nolan Rutschilling, Ohio Hospitals (3:05pm)*
 - d. **Member Discussion,** *All, (3:15pm)*
6. **Adjourn (3:30pm)**

Policy Update

Joe Garrity

Director of Government Affairs
MORPC

Ohio EPA Update

Erica Fetty-Davis

Environmental Specialist

Ohio EPA, Division of Air Pollution Control



1. **Welcome.** *Dale Arnold, Chair (2:00 pm)*
2. **Featured: Impacts of Past Policy on Present Community Health.** *Jon-Paul d'Aversa, MORPC (2:05 pm)*
3. **Ohio EPA Update,** *Erica Fetty-Davis, Ohio EPA (2:30pm)*
4. **Policy Update,** *Joe Garrity, MORPC (2:35 pm)*
5. **Building in Equity,** *Dale Arnold and Matt Stephens-Rich (2:40pm)*
 - a. **Subcommittee,** *Jon-Paul d'Aversa, MORPC (2:45pm)*
 - b. **Environmental Justice Policy for Roundtable,** *Dale Arnold, Chair (2:55pm)*
 - c. **Member Recruitment,** *Nolan Rutschilling, Ohio Hospitals (3:05pm)*
 - d. **Member Discussion,** *All, (3:15pm)*
6. **Adjourn (3:30pm)**

Building in Equity: Potential Actions



Subcommittee
Jon-Paul d'Aversa, MORPC

Environmental Justice Policy for Roundtable
Dale Arnold, Chair

Member Recruitment
Nolan Rutschilling, Ohio Hospitals



Building in Equity

All Member Discussion