

EWING STREET CONNECTOR

PROJECT
PROFILE

The Ewing Street Connector project will extend South Ewing Street at its intersection with Sugar Grove Road south to Logan-Lancaster Road/Memorial Drive/Old US 33. The roadway is also a component of a planned ring roadway around the Southwest side of the City of Lancaster, diverting truck traffic from the core of the city. The road also opens up additional land for economic development.

Prioritized by:
FAIRFIELD COUNTY

Project Type:

Transportation - Highways & Roads

Estimated Cost:

\$7.3 - \$9.7 million

Lead Agency:

City of Lancaster

Project Contact:

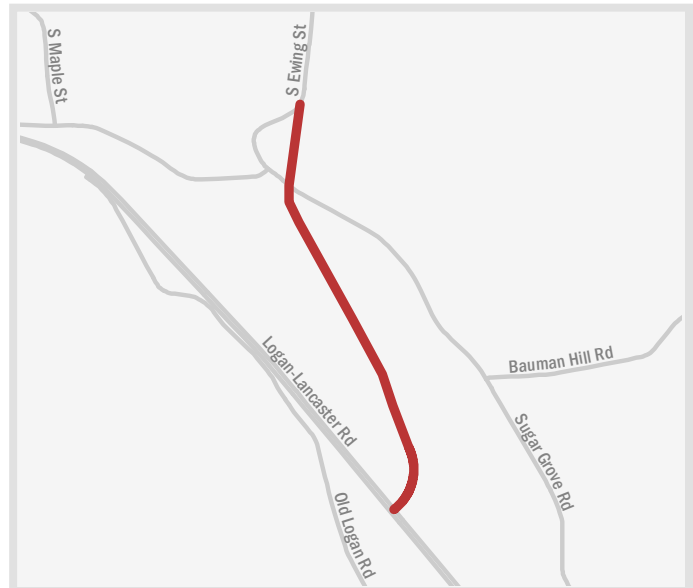
Mitch Noland, City Engineer
mnoland@ci.lancaster.oh.us | 740-687-6614

Partner Agencies:

Ohio Department of Transportation

Jobs Supported:

Potential commercial or industrial development

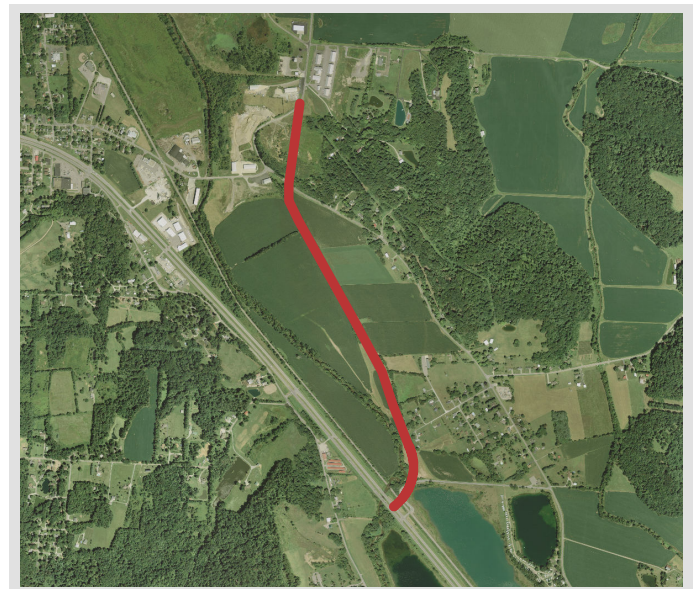


Project Location

Ewing Street at Sugar Grove Road to Logan-Lancaster Road/Memorial Drive/Old US 33

Project Benefits

- Maintains competitive infrastructure by relieving traffic congestion through Central Lancaster
- Adds value to the transportation system by creating redundant transportation connections between national and statewide highway corridors
- Provides for development of shovel-ready sites with transportation infrastructure
- Keeps pace with the infrastructure needs of growing companies and residents
- Aligns with existing planning documents, including City of Lancaster Thoroughfare Plan



2013 aerial view of project location

C
O
N
G
R
E
S
S

HOUSE

15 - Stivers

SENATE

Brown

Portman