

I-70 TO US 33 CONNECTOR

PROJECT
PROFILE

The I-70 to US 33 Connector project will construct a parkway between Interstate 70 and US 33 to the east of the City of Pickerington. Once completed, the roadway will have two lanes in each direction. The corridor alignment has not been finalized but would likely utilize both new and existing right-of-way.

Prioritized by:
FAIRFIELD COUNTY

Project Type:
Transportation - Highways & Roads

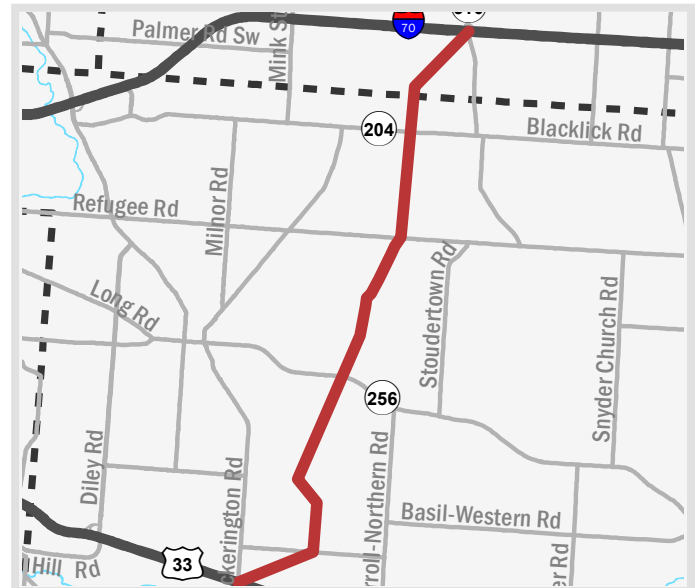
Estimated Cost:
\$109 - \$140 million

Lead Agency:
Fairfield County Engineer's Office

Project Contact:
Jeremiah Upp, PE, PS, Fairfield County Engineer
engineer@fairfieldcountyohio.gov | 740-652-2300

Partner Agencies:
Violet Township (Fairfield Co.), Etna Township (Licking Co.),
Ohio Department of Transportation, Mid-Ohio Regional
Planning Commission (MORPC)

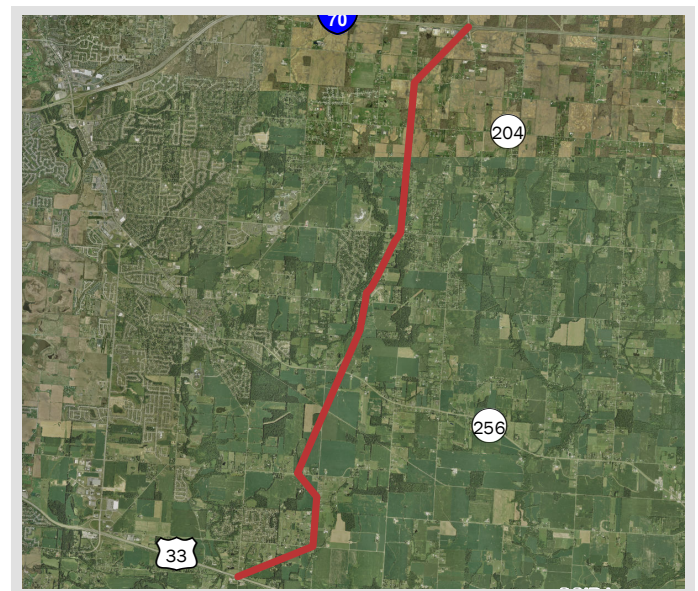
Jobs Supported:
Potential development of office, warehouse, and logistics
employment centers



Project Location
Interstate 70 to US 33

Project Benefits

- Maintains competitive infrastructure by relieving traffic congestion through central Pickerington and on the US 33 and I-270 corridors
- Adds value to the transportation system by linking national and statewide highway corridors as identified by Access Ohio 2045
- Provides for development of shovel-ready sites for economic development near the I-70 corridor
- Promotes active transportation through the construction of complete streets
- Aligns with existing planning documents, including the 2020-2050 MORPC Metropolitan Transportation Plan



2013 aerial view of project location

C
O
N
G
R
E
S
S

H
O
U
S
E

12 - Balderson
15 - Stivers
SENATE
Brown
Portman