

LONDON EAST SIDE SEWER EXTENSION

PROJECT
PROFILE

The London East Side Sewer Extension project will expand the current collection system into the Eastern portion of the corporation limits to allow for full development. This project also has the possibility of relieving expansion concerns of both the Lafayette sewer system (Madison County Water and Sewer) as well as a portion of the West Jefferson sewer system.

Project Type:
Water & Sewer

Estimated Cost:
This project is under Preliminary Engineering and has no cost projection yet

Lead Agency:
City of London Board of Public Utilities

Project Contact:
Jerry Ussher, Wastewater Superintendent
jussheer@londonohio.gov | 740-852-0279

Partner Agencies:
Madison County Water and Sewer,
City of West Jefferson

Jobs Supported:
Commerical and industrial jobs in service areas

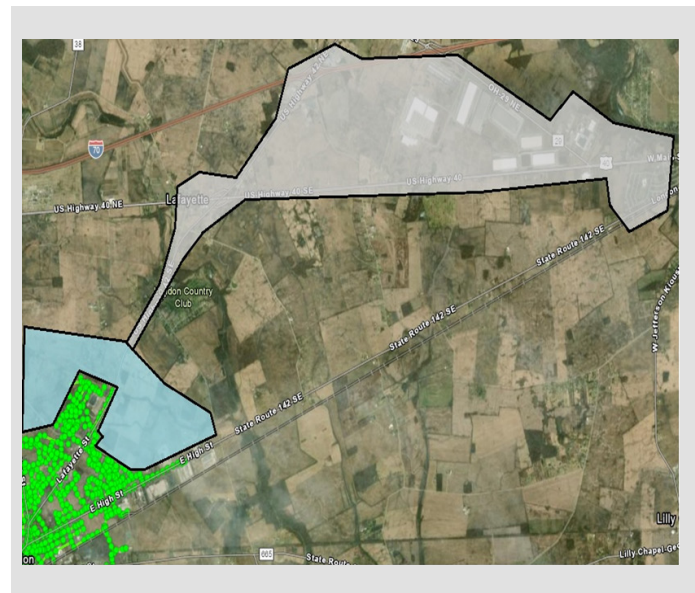
Prioritized by:
MADISON COUNTY



Project Location
City of London

Project Benefits

- Allows the City of London to be better prepared for continued residential development
- Ensures that the City of London and Madison County are capable of providing service for future industrial interests
- Allows for the potential elimination of failed/failing septic systems in the area.
- Maintains competitive infrastructure extending water and sewer systems to support growth and development
- Keeps pace with the infrastructure needs of residents and employers



Blue area will be impacted, gray area may be impacted

C
O
N
G
R
E
S
S

HOUSE

15 - Stivers

SENATE

Brown

Portman