

PERRY COUNTY HOME FARM

PROJECT
PROFILE

The Perry County Home Farm project will create a learning center for students and residents. Utilizing the resource of land, the center will be a working laboratory for agroecology to provide workforce training in agriculture and related fields. In addition to strengthening workforce education, the center will accomplish community development goals such as soil remediation research for coal-impacted communities.

Project Type:
Strategic Planning

Estimated Cost:
TBD

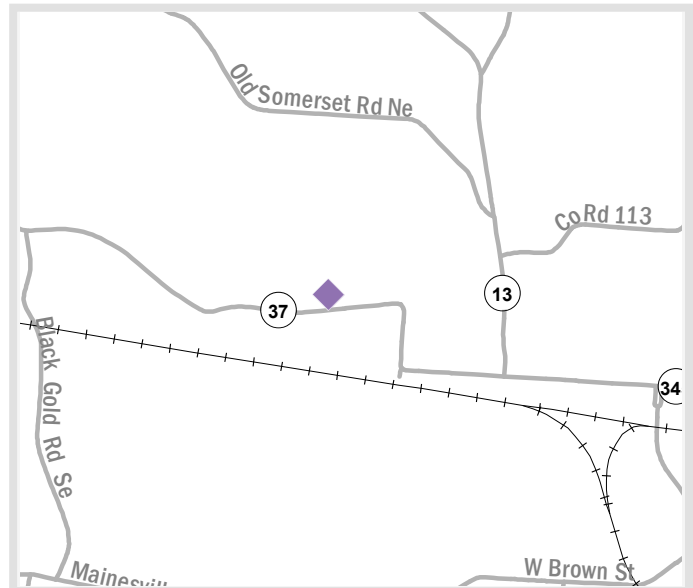
Lead Agency:
Perry County Community Improvement Corporation (CIC)

Project Contact:
David Hansen, Director
hansen.david.j@gmail.com | 614-783-0309

Partner Agencies:
New Lexington City School District, Hocking College,
Perry County Commissioners

Jobs Supported:
Development of skilled workforce

Prioritized by:
PERRY COUNTY

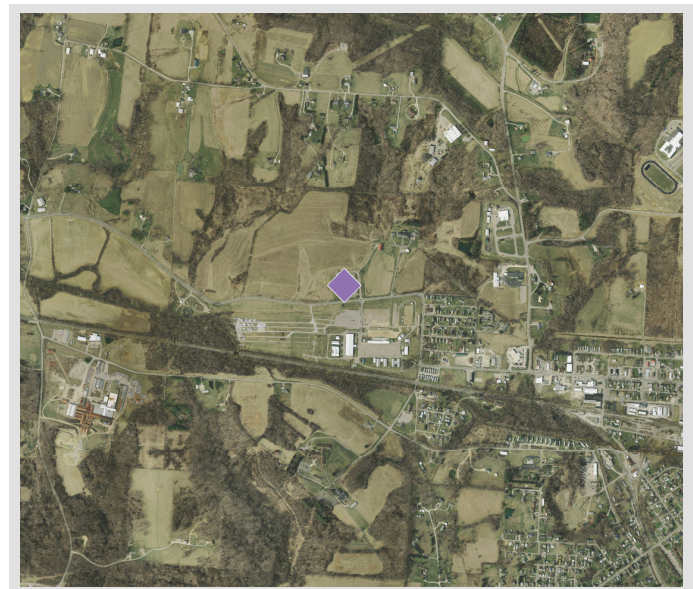


Project Location

Former Perry County Home Farm located just west of the Village of New Lexington on SR 37

Project Benefits

- Advances economic development goals by addressing workforce needs for the county
- Fosters entrepreneurship with maker spaces and a business incubator
- Creates opportunities to train workers for culinary, food production, venticulture, and related employment
- Facilitates social investment in the community
- Leverages an underutilized county-owned asset



Aerial view of project location

C
O
N
G
R
E
S
S

H
O
U
S
E

15 - Stivers

SENATE

Brown

Portman