

INTERCITY TRANSPORTATION INITIATIVES

PROJECT
PROFILE

The Intercity Transportation Initiatives project explores options to better connect the Columbus Region with major metropolitan regions of the Midwest, including Chicago and Pittsburgh. A multi-phased planning effort will examine the feasibility for railroad technologies including hyperloop and traditional rail. The project builds on the Midwest Connect Hyperloop and Chicago-to-Columbus Passenger Rail efforts.

Prioritized as a project of
**REGIONAL
SIGNIFICANCE**

Project Type:
Strategic Planning

Lead Agency:
Mid-Ohio Regional Planning Commission (MORPC)

Project Contact:
Thea Walsh, Transportation Systems & Funding Director
twalsh@morpc.org | 614-233-4160

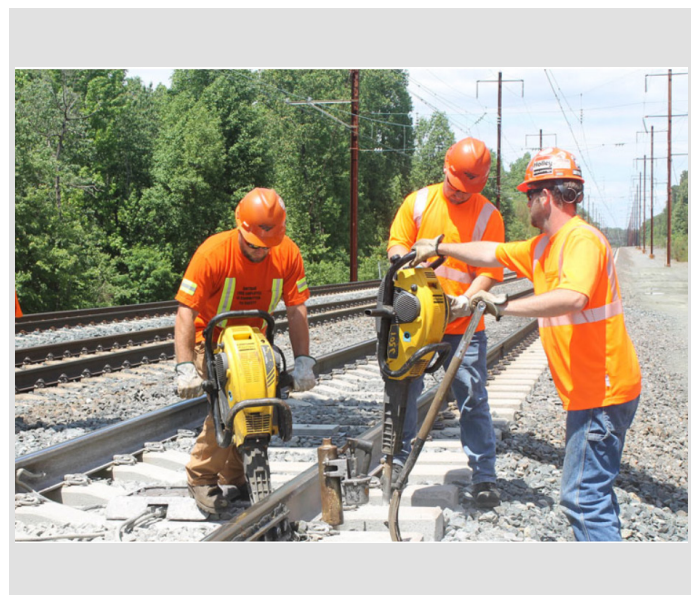
Partner Agencies:
Columbus Partnership; JobsOhio; Ohio Department of Transportation; Ohio Rail Development Commission; multiple cities and counties; and numerous public and private partners along the corridor (e.g., business groups, local governments, regional planning agencies, etc.)



Approximate location of the proposed Midwest Connect rapid speed transportation (hyperloop) segment connecting Chicago, Ft. Wayne, Lima, Columbus, and Pittsburgh

Project Benefits

- Maintains competitive infrastructure by exploring diverse transportation technologies for the region and state
- Adds value to the transportation system by creating additional transportation modes on a corridor without redundant highway or passenger rail facilities
- Creates opportunities to create a Midwest megaregion by linking major cities with intercity rail transportation
- Links major business, institutional, logistics, and sports destinations along the corridor
- Provides an opportunity to transform and improve the movement of freight and cargo



Investments in new and existing rail infrastructure would accelerate regional and national intercity rail connections

C
O
N
G
R
E
S
S

HOUSE

2 - Wenstrup

3 - Beatty

4 - Jordan

7 - Gibbs

12 - Balderson

15 - Stivers

SENATE

Brown

Portman