

INDUSTRIAL PARKWAY WIDENING

PROJECT
PROFILE

The Industrial Parkway Widening project will address increasing travel demand in southern Union County by expanding the existing 4.3 mile, two lane major collector roadway to a five lane thoroughfare from SR 161 to US 42. The project includes the installation of a multi-use path to provide for the safe connectivity of cyclists and pedestrians while also providing accessibility for the residents and businesses.

Prioritized by:
UNION COUNTY

Project Type:
Transportation - Highways & Roads

Estimated Cost:
\$25-30 million

Lead Agency:
Union County

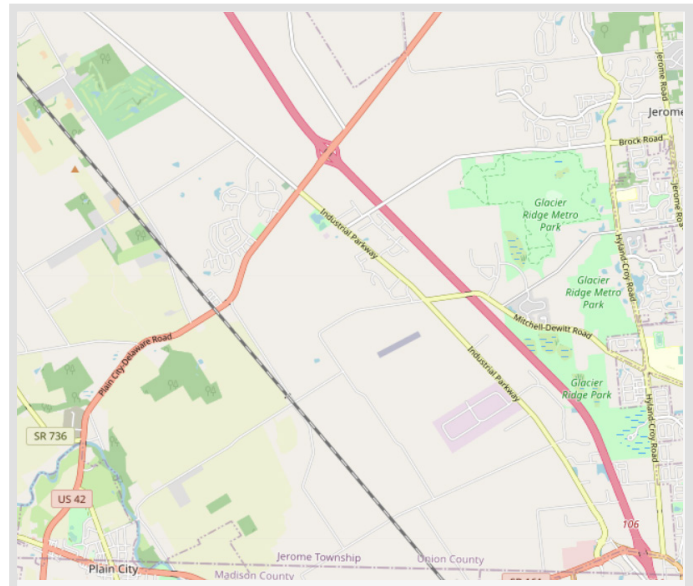
Project Contact:
Jeff Stauch, PE PS, Union County Engineer
jstauch@unioncountyohio.gov | 937-645-3018

Partner Agencies:
Union County-Marysville Economic Development Partnership,
Union County Transportation Improvement District

Jobs Supported:
Approximately 7,800 created and 3,000 retained

Project Benefits

- Provides expanded capacity, improved safety and access management for approximately 1,000 acres of existing development
- Prepares approximately 1,300 acres of undeveloped land directly adjacent to the US 33 corridor with adequate transportation infrastructure
- Provides connectivity for cyclists and pedestrians by expanding and extending a multi-use path along the corridor
- Presence of existing fiber optic infrastructure combined with increased capacity fill further facilitate the research and implementation of autonomous and connected vehicles (AV/CV), as well as support business expansion



Project Location
Industrial Parkway from SR 161 to US 42



Planned intersection improvements at US 42 and Industrial Parkway

C
O
N
G
R
E
S
S

HOUSE

4 - Jordan

SENATE

Brown

Portman