

# SR 207 EXTENSION

PROJECT  
PROFILE

The SR 207 Extension project will construct 1.2 miles of new roadway from the US 23 and SR 207 interchange to SR 159. The roadway will intersect SR 159 at its intersection with SR 180 and a roundabout will be constructed.

Prioritized by:  
**ROSS COUNTY**

## Project Type:

Transportation - Highways & Roads

## Estimated Cost:

\$9 million

## Lead Agency:

Ohio Department of Transportation

## Project Contact:

David Beekman, PE, District Design Engineer  
david.beekman@dot.state.oh.us | 740-774-8852

## Partner Agencies:

Ross County Commissioners

## Jobs Supported:

TBD

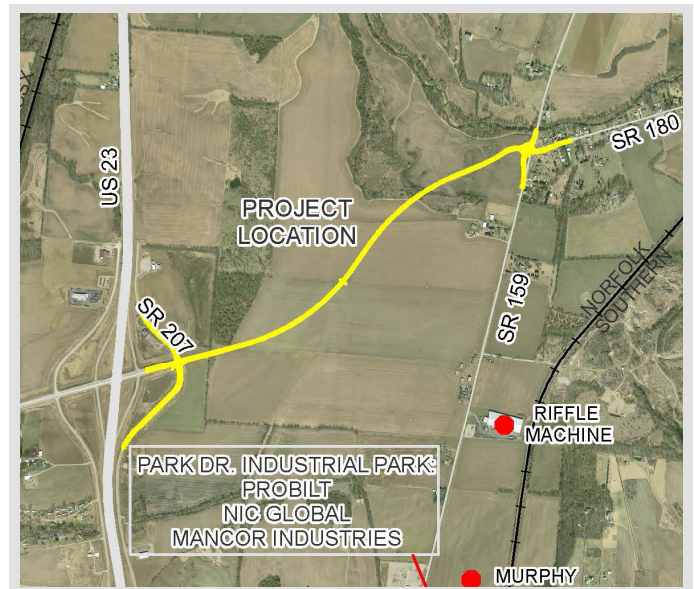


## Project Location

US 23 and SR 207 interchange to SR 157 and SR 180 intersection

## Project Benefits

- Maintains competitive infrastructure by removing traffic from narrow, rural county and township roads
- Improves safety by upgrading the intersection of SR 159 and SR 207 through the construction of a roundabout
- Supports industrial growth on the north side of the City of Chillicothe
- Leverages \$30+ million investment in the SR 207 Connector, which included construction of a 2.67-mile highway from SR 104 to its current terminus at US 23
- Aligns with existing planning documents, including the 2012 Ross County Thoroughfare Plan



Map showing potential roadway alignment, roundabout, and ramp improvements

C  
O  
N  
G  
R  
E  
S  
S

HOUSE

2 - Wenstrup

15 - Stivers

SENATE

Brown

Portman