

# MORPC Attributable Funds Workshop

June 3, 2020



MID-OHIO REGIONAL  
**MORPC**  
PLANNING COMMISSION

# Workshop Overview

- Introduction & What's New
- Funding Programs and Eligibility
- Applications & Updates
  - Updates
  - Screening Application
  - Final Application
- Evaluation Process
- Project Development Requirements

# Introduction

MORPC-Attributable Funding Workshop



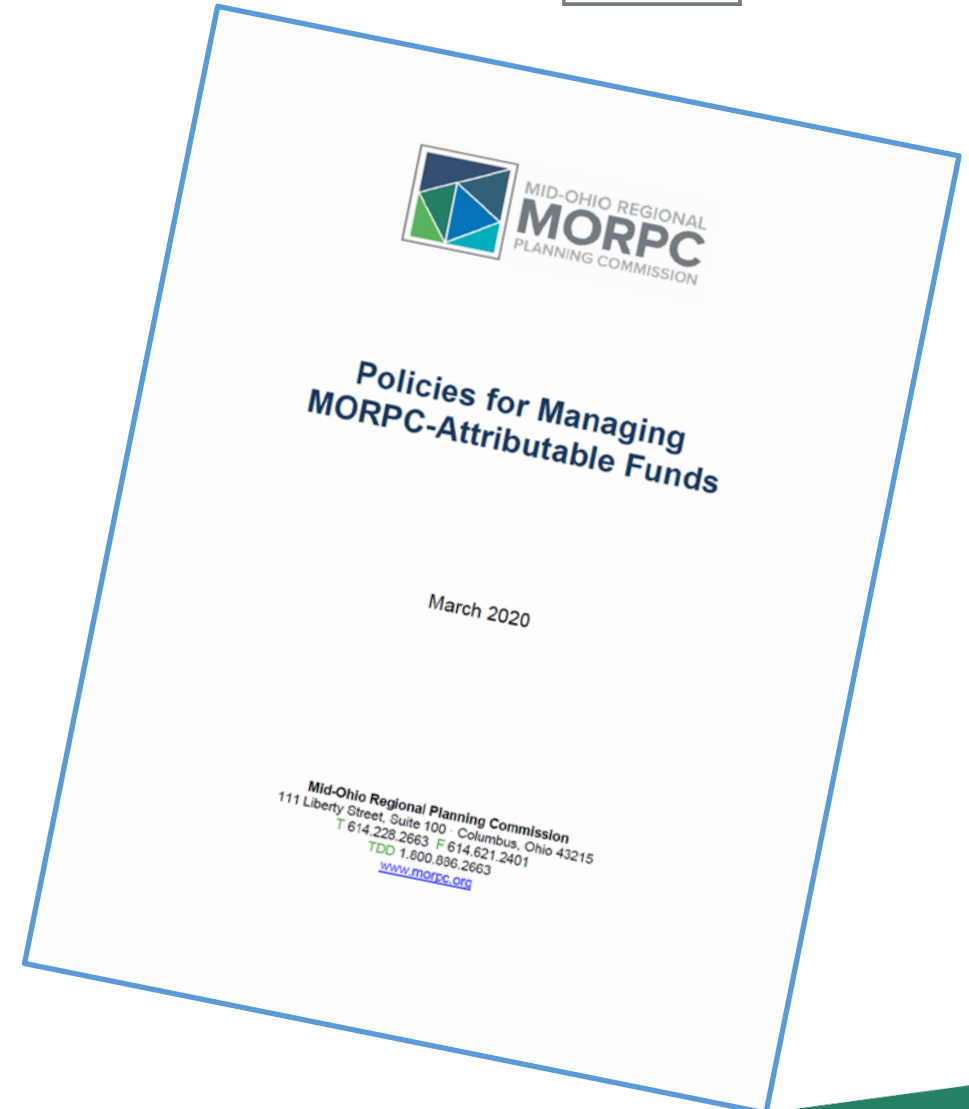
MID-OHIO REGIONAL  
**MORPC**  
PLANNING COMMISSION

# Policies for Managing MORPC-Attributable Funds



MORPC

- 1) Introduction
- 2) Attributable Funds Committee
- 3) Process Milestones & Timeline
- 4) Eligibility & Requirements
- 5) Activity Categories
- 6) Application Process for New Funding
- 7) Evaluation & Selection Process
- 8) Project Development Requirements
- 9) Maintaining Funding Commitments
- 10) Other Policies for Program Management



# MORPC-Attributable Funding



MORPC

- Approximately \$37 Million Annual Budget
  - Surface Transportation Block Grant Program (STBG) ~\$23M/yr
  - Congestion Mitigation/Air Quality Improvement Program (CMAQ) ~\$12M/yr
  - Transportation Alternatives Program (TAP) ~\$2M/yr
- Solicit Project Applications Every Two Years
  - Updates to previous funding commitments
  - Applications for new commitments
- Pending requests to modify outstanding commitment

# Available Funding



MORPC

- Estimated \$55 to \$65 million available for new projects
- Most of funding in SFY 2026-27
- Pending requests to modify outstanding commitment

## Policies Review

- Began May 2019 with AFC session to brainstorm changes
- Meetings September to December
  - Staff presented changes
  - AFC members discussed, commented, and directed





# Changes for 2020



- Adjusting the schedule for the applications
- Providing some datasets on which the evaluation of projects will be based prior to the screening applications being due
- Example information for some open ended questions
- Incorporating language with regard to the new Smarts Streets Policy
- Clarifying language on who pays interest on SIB loans



# Funding Management Process

- 2 Year Cycle



# Application Timeline 2020-21



- **March:** MORPC adopted Policies
- **June 3:** MORPC hosts applicant workshop virtually via Teams at 2:30
- **July 10:** Commitment Update Form due
- **July 17:** Screening Applications for new funding due
- **Early August:** Staff completes review of Updates. Provide feedback to applicants and revised forecast of available funding
- **October 9:** Final Applications due
- **November 4:** Ad-interim AFC members change
- **October - January:** Staff review and score applications & AFC review and recommends funding commitments
- **February 2021:** Draft list of funding commitments available for public review and comment
- **May 2021:** MORPC Adopts list of attributable funding commitments

# Attributable Funds Committee



- Membership includes:
  - Transportation Advisory Committee
  - Transportation interests
  - Community Advisory Committee, Transportation Policy, Sustainability Advisory Committee
  - Members with current MORPC funding or applies for funding
- Committee Responsibilities:
  - Reviews Policies and recommends changes
  - Oversees the project solicitation and selection process
  - Recommends decisions on requests in project updates
  - Assists staff scoring and ranking of applications
  - Recommends a program of previous and new commitments within targets in the policies

# Funding Programs & Eligibility

MORPC-Attributable Funding Workshop



MID-OHIO REGIONAL  
**MORPC**  
PLANNING COMMISSION

# Eligible Activities



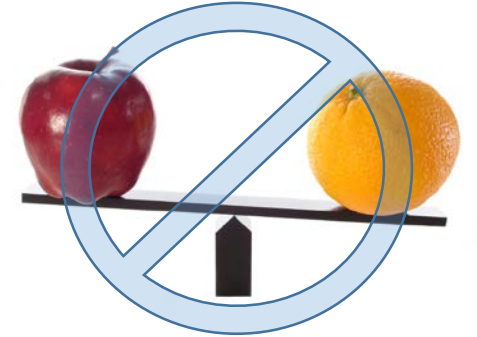
MORPC

- Roads & bridges
  - Construction
  - Widening
  - Reconstruction & maintenance
- Road projects must be on Federal Aid System (collector or above)
- Bridges can be on any public road
- Intersection or corridor signalization
- Transit
- Construction of bicycle and pedestrian facilities (on- or off-road)
- Primarily for capital (not operating)

# Activity Categories



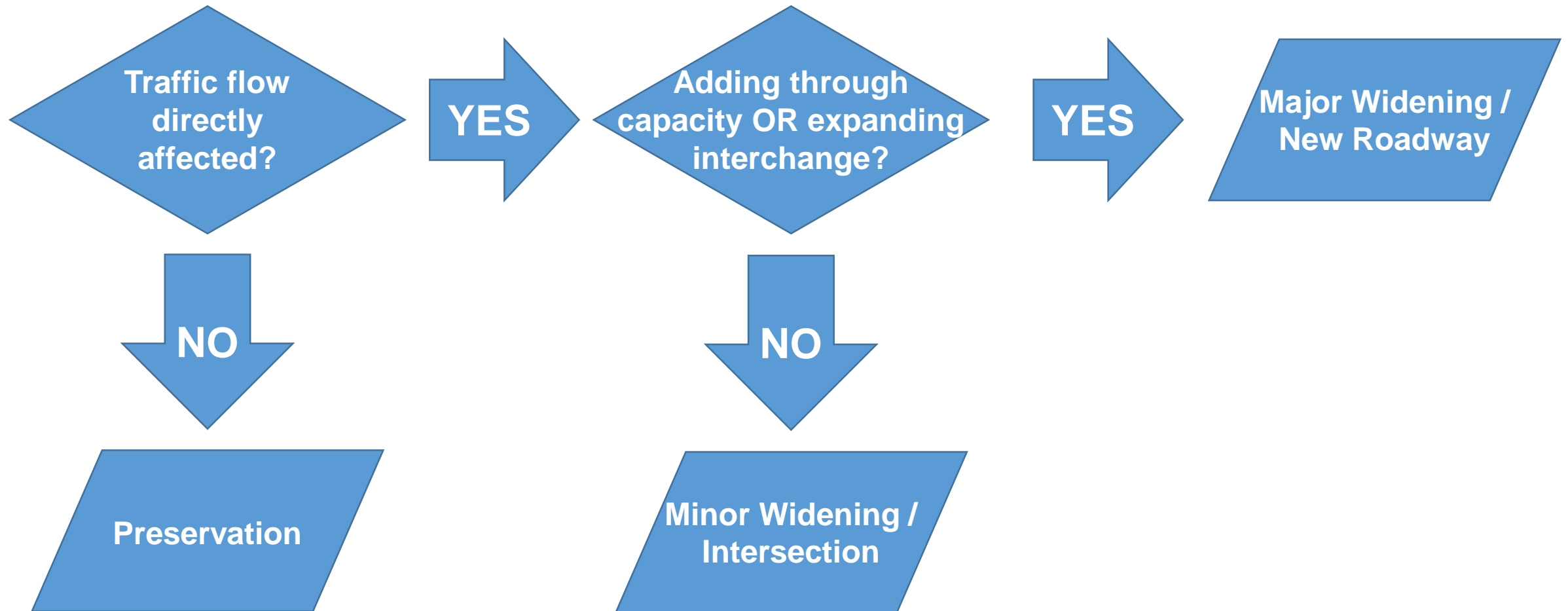
- Major Widening/New Roadway
  - Add through lanes or new roadways
  - New or expanded interchanges
- Minor Widening/Intersections/Signals
  - Add center turn lane
  - Expand intersection capacity
  - Coordinated signal systems
- System Preservation
  - Replace existing infrastructure only
  - No capacity addition
- Public Transit
  - Replace vehicles
  - Park & rides, transit centers
  - Enhanced bus stops
  - New service capital projects
- Bike and Pedestrian
  - Add path, bike lanes, sidewalks
  - Not part of a larger project
- Other
  - Does not fit others categories
  - Education & enforcement
  - Engine retrofits, alternative fuels stations, etc.



# Categorizing Roadway Projects



MORPC





# Funding Targets



MORPC

	Major Widening / New Roadway	Minor Widening / Intersections / Signals	System Preservation	Transit	Bike & Pedestrian
Min %	40	20	10	5	5
Max %	50	30	15	15	15

- Identify best projects in each category
- Some criteria differ by category
- For FY 2021-2027

# Estimated Funding Available by Category



MORPC

\$55 million to \$65 million available

- Major Widening/New Roadway
  - \$35 to \$55 million
- Minor Widening/Intersections/Signals
  - \$10 to \$30 million
- System Preservation
  - \$1 to \$12 million
- Transit
  - \$3 to \$25 million
- Bicycle and Pedestrian
  - Up to \$13 million
- Pending requests to modify outstanding commitment

# Requirements

- Public agencies only
- Roadways on [federal-aid system](#)
- In 2020-2050 [Metropolitan Transportation Plan](#) (MTP)
  - Individually listed
  - Included in line item
    - Reconstruction
    - Maintenance
    - Transit
- 20 percent cash match
- Preliminary engineering (PE) & design ineligible
- Complete Streets Policy
- Smart Streets Policy
- Follow ODOT project development process

# Complete Streets Policy



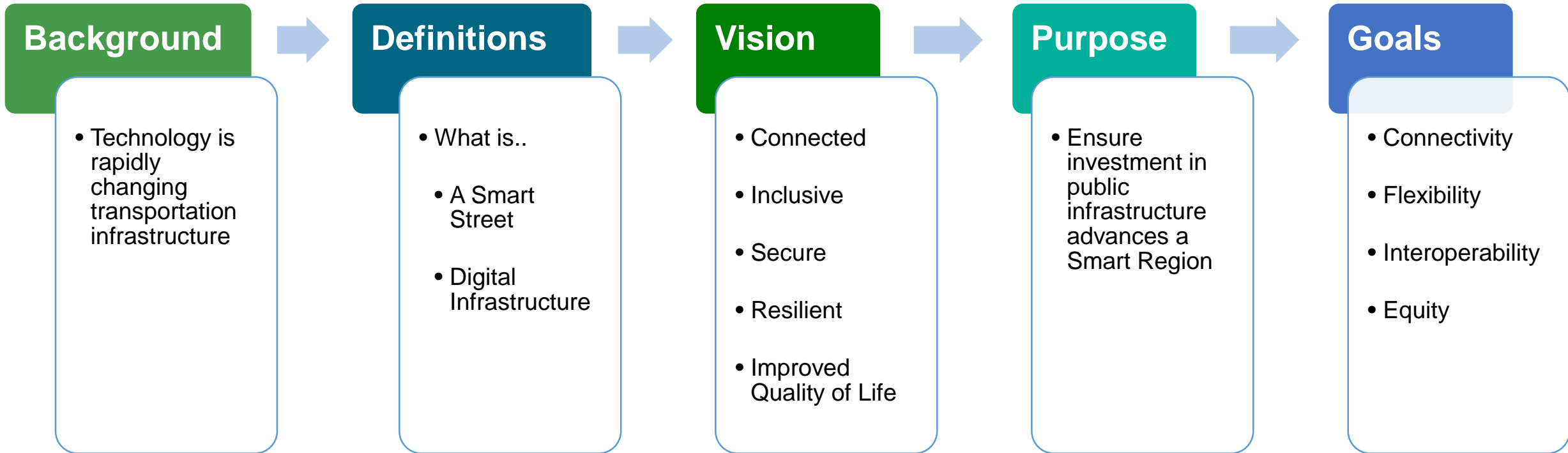
MORPC

- More than bicyclists and pedestrians
- Wide variety of approaches to comply
- MORPC staff involvement
- No automatic exemptions
- Appeals process

# Regional Smart Streets Policy Basics



MORPC



# Updates & New Applications

MORPC-Attributable Funding Workshop



MID-OHIO REGIONAL  
**MORPC**  
PLANNING COMMISSION

# Commitment Updates

- For outstanding commitments
  - If submitting final plans after Dec. 31, 2020
  - Or awarding after June 2021
- Due on July 10 by 5 p.m.
- Pre-filled – sponsor only edits & completes form
- Sponsor provides:
  - Cost estimate
  - Signature
  - Resolution/legislation – July 10, 2019 or newer



## Key Update Information

- Explain changes since last time
  - Scope changes
  - Milestone changes 6+ months
  - Cost changes 10%+
    - Form displays Committed amount
    - Enter estimate in 2020 dollars
    - Form calculates Inflated amount for award SFY
    - Justify if Inflated differs from Committed by +/- 10% or more
- Significant changes could require a new Final Application

# Selection Process for New Projects



MORPC

Screening Application (July 17)



Staff Review & Feedback



Final Application (October 9)



Evaluation, AFC Review & Recommendation



Public Involvement (February 2021) &  
MORPC Adoption (April 2021)

# Screening Application



MORPC

## Purposes:

- Assess eligibility
- Establish Activity Category
- Determine funding demand
- Understand stage of development
- Review schedule & costs

## Requested Info:

- MTP Project ID Number
- Scope
  - Location
  - Limits
  - Activity Category
- Project schedule
- Project cost and funding requested

# Screening Application Feedback



- Eligibility issues
- Confirm Activity Category
- General competitiveness
- Information needed on Final Application
- Complete Streets assistance
- Guidance for Final Application

# Online Application Form



- General Project Information
  - Detailed scope, schedule, cost, etc.
  - Incorporate and respond to feedback
- Evaluation Information
  - Questions related to scoring the project
  - Respond only to questions identified in feedback

# Applicant Info Section



- Contact information
- Signature
- Eligible to contract with ODOT
- Supporting resolution due Oct. 29

## Reference Info & Dimensions Sections

- Primary facility
- Project limits
- Scope: Primary & secondary activities
- Activity Category (feedback to confirm)
- Typical section(s) and plan view(s)
- Width of lanes, shoulders, sidewalks & paths
- Bridges, RR crossings, transit stops



# Planning & Coordination Section



MORPC

- Origin
- Stakeholders
- Adjacent projects & jurisdictions
- Logical termini
- Other scope elements:
  - Utilities
  - Lighting
  - Traffic calming
  - Intelligent Transportation System (ITS) components

# Multi-Modal Section



MORPC

- Complete Streets Policy compliance
- Existing & proposed components and conditions for:
  - Transit
  - Pedestrians
  - Bicyclists

## Cost Estimate Section

- Estimate prepared after June 30, 2019
- 20% match for amount requested
- PE is generally ineligible
  - Available for financial hardship or for multi-jurisdictional projects
  - Up to 80% of PE
  - Amount for PE will be deducted from a future phase
  - Total amount for project the same as if funds not advanced to PE (80% of RW & construction)
- ODOT's preliminary cost estimating procedure
- Current dollars (2020)
- Discourage construction projects under \$250,000
- State Fiscal Year (SFY) determined by schedule

# Cost Estimate Section continued



MORPC

- Funding Table
  - Choose table format to calculate based on:
    - Percentage of costs by sub phase
    - Dollar amount by sub phase

# Project Schedule Section



MORPC

- Schedule guidelines:
  - 2 years for environmental (up to right-of-way (RW) authorization)
  - 1 year for detailed design
  - 1 to 3 years for RW acquisition and utility relocation
  - For Jan.-June plan file dates, funds in next state fiscal year (SFY)
- Non-construction projects
  - Explain when the funding is needed

# Online Application Form



# MORPC

Programs & Services

Tools & Resources

About MORPC

My Faves

FEATURED TOOLS & RESOURCES

Central Ohio Solar Toolkit for Local Governments

Columbus Metro Bike Map

Complete Streets

Estimates & Projections

Funding & Grants

Green Infrastructure

Local Plans Library

Mid-Ohio Open Data

RFPs & RFQs

Traffic Counts

BROWSE BY TOPIC

Data

Energy

Housing

×

NAL  
PC  
MISSION

CONTACT US

NEWS

MEETINGS & EVENTS

COMMITTEES

LANGUAGE

What is Doing

CORONAVIRUS RESPONSE

AL OHIO LOCAL GOVERNMENTS

What can we help you find?

# Online Application Form



MORPC

projects, and services that make our region successful. Below are funding and grant opportunities that are available to local communities and organizations.

## TOOLS & RESOURCES

### MORPC-attributable Funding for Transportation

A portion of federal transportation funding is allocated at MORPC's discretion, following an application and selection process. We call these funds MORPC-attributable funds. We work closely with local agencies to prioritize the use of these funds to meet their needs and those of the entire region. They can be used for roads and bridges, public transit, bikeways, sidewalks, and a variety of other activities. The funds come from three federal programs: the [Surface Transportation Block Grant Program \(STBG\)](#), the [Congestion Mitigation & Air Quality Improvement Program \(CMAQ\)](#), and the [Transportation Alternatives Program \(TAP\)](#).

We manage this program under the oversight of our [Attributable Funds Committee \(AFC\)](#). We solicit and evaluate applications for funding from local public agencies every two years. Because of the time it takes to plan, study and design these projects, we try to keep most of the next four years' worth of funding lined up for projects already in the pipeline.

More information can be viewed on the [MORPC-attributable Funding for Transportation](#) webpage.

Questions can be directed to [Nathaniel Vogt](#) at 614.233.4183.

**Section 5210 Enhanced Mobility for Seniors and Individuals with**



# Attributable Funds Webpage



MORPC

## MORPC-attributable Funding for Transportation

TRANSPORTATION

A portion of federal transportation funding is allocated at MORPC's discretion, following an application and selection process. We call these funds MORPC-Attributable Funds. We work closely with local agencies to prioritize the use of these funds to meet their needs and those of the entire region. They can be used for roads and bridges, public transit, bikeways, sidewalks, and a variety of other activities.

The funds come from three federal programs: the [Surface Transportation Block Grant Program \(STBG\)](#), the [Congestion Mitigation & Air Quality Improvement Program \(CMAQ\)](#) and the [Transportation Alternatives Program \(TAP\)](#).

We manage this program under the oversight of our [Attributable Funds Committee \(AFC\)](#). The committee recommended revisions to improve the project selection process for 2020, and we adopted them on March 12.

View [Policies for Managing MORPC-Attributable Funds](#)

### 2020-2021 Application Funding Cycle

We solicit and evaluate applications for funding from local public agencies every two years. Because of the time it takes to plan, study and design these projects, we try to keep most of the next four years' worth of funding lined up for projects already in the pipeline. Below are some important dates in the selection process that are included in the policies:

June 1	Tentative launch date for the online application
June 3, 2:30-4:30 p.m. via Microsoft Teams	Workshop for attributable funds applicants and sponsors
July 10, 5 p.m.	Commitment Update Forms for outstanding commitments are due
July 17, 5 p.m.	Screening Applications for new funding requests are due
October 9, 5 p.m.	Final Applications for new funding requests are due

Link to online form to be provided soon

#### June 3 Virtual Workshop Connection Information:

[Join Microsoft Teams Meeting](#)

[+1 614-362-3056](#) United States, Columbus (Toll)

[\(888\) 595-9954](#) United States (Toll-free)

Conference ID: 218 587 933#

Because of the time it takes to plan, study and design these projects, we try to keep most of the next four years' worth of funding lined up for projects already in the pipeline. We are looking for projects that will be ready for construction in 2026 and 2027 and other transportation activities that need funding after 2021. We are expecting \$50-60 million to be available for this round of funding.

Attributable Funding Evaluation GIS data can be downloaded [here](#)



Email

Password

[Forgot your password?](#)

Log in

Don't have an account? [Register](#)

The due date for commitment updates is July 10, 2020 and July 17, 2020 for screening applications for new funding.

MORPC-Attributable Funds comprise a portion of federal transportation funding that is allocated at MORPC's discretion. This online application represents the first stage in the selection and allocation process. MORPC Attributable Funds can be used for roads and bridges, public transit, bikeways, sidewalks, and a variety of other activities.

This application was tested using current versions of Chrome, Firefox, and Edge browsers in May, 2020.



[NEW APPS](#)



[USERS](#)

[ORGANIZATIONS](#)

[ASSIGN CONSULTANTS](#)

## New Application

### App sections

[Overview](#)

[Applicant info](#)

[Reference info](#)

[Dimensions](#)

[Planning and coordination](#)

[Multimodal](#)

[Cost estimate](#)

[Schedule](#)

[Evaluation](#)

[Authorization](#)

[Uploads](#)

### Overview

Application type

New application

Due date

7/17/2020

Status

In progress

[Print Entire Application / Save as a PDF](#)

[Check and submit](#)

[Withdraw this application](#)

# Evaluation & Selection Process

MORPC-Attributable Funding Workshop



MID-OHIO REGIONAL  
**MORPC**  
PLANNING COMMISSION

# Evaluation Information



- Questions reference project selection criteria for project categories
- Grouped by MTP goal
- Some questions do not apply to certain categories
- Feedback will give guidance for which questions need a response

## MTP Goals (criteria areas)

- Attract and retain *economic opportunity*
- Preserve and protect *natural resources*
- Promote energy reduction & production of *energy* from renewable resources
- Increase *collaboration* to maximize return on *public expenditures*
- Promote public investments that benefit the *health, safety and welfare* of people
- Create *sustainable neighborhoods* to improve residents' *quality of life*



# Project Scoring

- Evaluation criteria for each Activity Category
- Staff performs initial scoring
- Confirm Activity Category
- Quantitative and qualitative measures
- Scored on 10 point scale for each of 6 goals
  - Relative to applications in its category
  - Brief rationale for each score
  - Criteria in each goal are prioritized into 3 levels: A, B & C.
- Policies show questions used for each criterion
- Weights applied to score for each goal
- Weights differ by Activity Category
- Penalties for missing items, not responding to requests



MORPC Derived	Economic Opportunity Goal Evaluation Criteria & Description	Priority Level by Category					
		Major	Minor	Preservation	Bike & Ped	Transit	Other
X*	<b>Congestion Relief:</b> Applicant is to provide information on how congestion hampering economic development in the area. How will improvements to the transportation system as a result of this project improve economic development? MORPC will estimate the ability of the project to improve travel within a corridor so congested components of the transportation system are relieved. Measured using the regional model by the percentage reduction in 2040 VMT that experiences LOS E or worse within 1 mile of the project.	A	A			A	
X**	<b>Job Retention and Creation:</b> The number of existing jobs of each type (manufacturing, office, warehousing, retail, institutional) within 1 mile of the project. The Applicant will provide the number of permanent jobs of each type (manufacturing, office, warehousing, retail, institutional) that will be created in the region as a result of the project. Provide a map showing the locations in relationship to the project. Provide documentation showing that these jobs are committed to being created in this area with the improvements to the area.	A	A	B	B	B	
	<b>Development Readiness:</b> Describe the presence and timing of all necessary economic development components in the project area, such as infrastructure (e.g., utilities, water and sewer, broadband), access to appropriately trained labor (skilled and unskilled), and other transportation options (e.g., rail, airports, transit or bicycle and pedestrian). This can include how much new private or public capital investment has been made in the project area or will be as a result of the project. This investment can be within the past three years or commitments between now and 5 years after completion of the transportation project. Provide a map showing the past and committed investments. Please specify the type of investment and the timeline for this investment.	B	B			B	
X	<b>Travel Time Uncertainty &amp; Delay Reduction:</b> Using existing travel time data, the existing travel time uncertainty index will be calculated for the area within 1 mile of the project. Projects in areas with higher uncertainty will score better. Travel delay reduction is the average 2040 travel time reduction per person for a complete trip using the facility during peak periods (including AM and PM peak hours) as a result of the project as estimated using the regional model. Projects with more delay reduction will score better.	B	B			C	
X	<b>Traffic Composition:</b> Current and future Average Daily Traffic and percentage of truck traffic. Higher volume facilities and facilities serving a higher percentage of truck traffic will score higher.	B	B	A			
	<b>Other Economic Considerations:</b> Describe the type and amount of acreage of site(s) that will primarily benefit from the project's improvements (e.g., greenfields, developed, redeveloped, infill, brownfields, intermodal facilities). Please provide information with regard to the project's impact on economic development in the area. Is there anything unique about this project that has not been captured by the criteria? This could include how the project will impact a specific industry cluster, innovative business, or industry target as identified by Columbus 2020.	C	C	C	A	A	A

\*MORPC will estimate change in congested VMT. Applicant is to provide statement on how congestion is hampering economic development.

\*\*MORPC will calculate the number of existing jobs. Applicant is to provide the number of new jobs.

Health, Safety & Welfare Goal Evaluation Criteria & Description	Priority Level by Category					
	Major	Minor	Preservation	Bike & Ped	Transit	Other
<b>Crash Reduction:</b> Using the ODOT crash data and tools, crash measures for the project will be calculated, including overall frequency, bike/ped frequency, crash rate, and severity index. Additionally, using Crash Modification Factors (CMF) and Highway Safety Manual (HSM) based analyses, project improvement(s) will be evaluated with respect to their estimated impact on expected crashes. Projects that show more projected improvements to safety will score higher.	A	A	B	A	A	
<b>Facility Condition:</b> The average PCR of the existing roadway that would be improved as part of the project based on the most recent ODOT data will be calculated. The worst existing bridge component rating based on ODOT data that would be improved as part of the project. The sponsor should review the ODOT data and may provide supplemental data if desired. Projects that are on facilities with lower PCRs and/or bridge ratings will score higher.	A	A	A			
<b>New Transit Ridership:</b> The sponsor provides an estimate of the increase in transit ridership. This is to include both the ridership on the specific project or activity as well as overall system ridership. Projects that have higher ridership will score better.					A	
<b>Environmental Justice:</b> Of the estimated opening day users of the project, what is the minority percentage, what is the poverty percentage, what is the elder percentage, and what is the transportation handicapped percentage? The ratio of each of these relative to the regional average of each will be calculated. For the Bike and Pedestrian category, the population within 1 mile of the project will be estimated instead of the users.	B	B	B	B	B	
<b>System Life:</b> The applicant is to provide information on the age and condition of the components being replaced. Also provide a statement, if applicable, as to the potential of the project to maximize life of transportation system. This is any extraordinary aspect that is likely to be part of the project.	C	C	C	C	A	
<b>Other Health, Safety &amp; Welfare Considerations:</b> Statement by the sponsor with rationale on how the project would further this goal. Reference should be made to as many of the above criteria as applicable in justifying the benefits of the program/activity/project relative to this goal.	C	C	C	C	C	A



# Weights by Category & Goal



MORPC

<b>Project Category</b>	<b>MTP Goal</b>	Economy	Natural Resources	Energy	Collaboration & Funding	Health, Safety & Welfare	Sustainable Neighborhoods & Quality of Life
Major Widening/New Roadway		30	10	5	15	30	10
Minor Widening/Intersections/Signals		20	10	10	15	30	15
Bicycle and Pedestrian		5	5	5	15	35	35
Transit		10	10	15	15	25	25
System Preservation		15	5	10	15	35	20
Other		NA	NA	NA	NA	NA	NA

# Major Widening Example Criteria



MORPC

## Goal: Economic Opportunity

Weight = 30

Criteria:

- Effects of congestion in area/congestion relief
- Jobs retained\* & created in the region
- Development readiness (infrastructure, labor, transportation access)
- Travel time uncertainty & delay reduction\*
- Traffic composition (ADT & truck %)\*
- Other

## Goal: Economic Opportunity

Weight = 30

Criteria:

- Crash reduction\*
- Facility condition (pavement condition & bridge ratings)\*
- Population characteristics of beneficiaries (Environmental Justice)\*
- Components that maximize life of system
- Other

Priority A

Priority B

Priority C

\*Derived from MORPC datasets that are available to applicants prior to submission.

# System Preservation Example Criteria



## Goal: Health, Safety & Welfare

Weight = 35

### Criteria:

- Facility condition (pavement condition & bridge ratings)\*
- Crash reduction\*
- Population characteristics of beneficiaries (Environmental Justice)\*
- Components that maximize life of system
- Other

Priority A

Priority B

Priority C

\*Derived from MORPC datasets that are available to applicants prior to submission.



# Bike & Ped Example Criteria

## Goal: Sustainable Neighborhoods

- Weight = 35
- Criteria:
  - Effects on pedestrian system
  - Effects on bikeway system
  - Origin/destination density (within 1 mile)\*
  - Displacements
  - On Transit Line
  - Effects on transit system
  - Other

Priority A

Priority B

Priority C

\*Derived from MORPC datasets that are available to applicants prior to submission.

# Project Evaluation Data



MORPC

- Data sets to estimate the following are available during the application preparation period
  - Jobs within 1 mile
  - Uncertainty index
  - Traffic composition
  - Sensitive lands
  - Crash data (GCAT)
  - Facility condition
  - Transit lines
  - Environmental justice populations (Bike/Ped only)
  - O/D density (Bike/Ped only)

# AFC Review & Recommendation



- Reviews scoring & ranking
- Determines best applications by category
- Recommends a program of commitments within targets by category

# Public Involvement & Selection



- Public review & comment on recommendations
- MORPC's advisory and policy committees
  - Consider comments
  - May adjust recommendations
- Transportation Policy Committee makes final selection in March 2019

# Project Development Requirements

MORPC-Attributable Funding Workshop



MID-OHIO REGIONAL  
**MORPC**  
PLANNING COMMISSION



# Schedule Requirements & Penalties



- Execute a Partnering Agreement
  - Between sponsoring agency & MORPC
  - Confirmed amounts
  - Agreed dates to achieve milestones
    - RW authorization
    - Final plan package submittal
- Begin development of new projects
  - Authorize a consultant
  - Due by next Commitment Update deadline (2020)
  - If not, can re-apply for funds
- Penalties applied until phase is authorized
  - 1 year late → 5 point deduction on future new requests
  - 2 years late → ineligible for future new requests

## Other Requirements



- Follow ODOT PDP and project monitoring
- Copy MORPC staff on formal ODOT submittals
- Sponsor is responsible for costs above the MORPC commitment

# Application Tips



- Consider time & costs of federal requirements
  - NEPA (National Environmental Policy Act)
  - Uniform Act (property acquisition)
  - PDP (plan reviews)
- Accurate, realistic schedule & costs
- Rationale & documentation for qualitative criteria
- How criteria & weights affect score
- Maximize strengths before addressing weaknesses
- Federal funds for “easy” projects, flexible funds for challenges
- Consider consultant experience

# Application Timeline 2020-21



- **March:** MORPC adopted Policies
- **June 3:** MORPC hosts applicant workshop virtually via Teams at 2:30
- **July 10:** Commitment Update Form due
- **July 17:** Screening Applications for new funding due
- **Early August:** Staff completes review of Updates. Provide feedback to applicants and revised forecast of available funding
- **October 9:** Final Applications due
- **November 4:** Ad-interim AFC members change
- **October - January:** Staff review and score applications & AFC review and recommends funding commitments
- **February 2021:** Draft list of funding commitments available for public review and comment
- **May 2021:** MORPC Adopts list of attributable funding commitments

## Nick Gill, PE

T: 614.233.4151  
[ngill@morpc.org](mailto:ngill@morpc.org)

## Nathaniel Vogt, PE, AICP

T: 614.233.4183  
[ngill@morpc.org](mailto:ngill@morpc.org)

## Thomas Graham

T: 614.233.4193  
[ngill@morpc.org](mailto:ngill@morpc.org)

**Mid-Ohio Regional Planning Commission**  
111 Liberty Street, Suite 100  
Columbus, OH 43215



MID-OHIO REGIONAL  
**MORPC**  
PLANNING COMMISSION

