



MID-OHIO REGIONAL
MORPC
PLANNING COMMISSION

111 Liberty Street, Suite 100
Columbus, Ohio 43215
morpc.org

T. 614. 228.2663
TTY. 1.800.750.0750
info@morpc.org

**ACTIVE TRANSPORTATION COMMITTEE
THIRD QUARTER MEETING**

JULY 7, 2020
10:00 AM - 12:00 PM

AGENDA

- 1. Welcome and Logistics (10 min)**
- 2. Equity in Active Transportation (40 min)**
 - a. Stefanie Brodie, Toole Design*
- 3. ATC Updates (30 min)**
- 4. ATP Update (10 min)**
- 5. Updates & Announcements (25 min)**
- 6. Other (5 min)**

The next ATWG Meeting is

October 2020

*111 Liberty Street, Suite 100
Columbus, Ohio 43215*

William Murdock, AICP
Executive Director

Rory McGuiness
Chair

Karen J. Angelou
Vice Chair

Erik J. Janas
Secretary

Active Transportation Committee

July 7, 2020

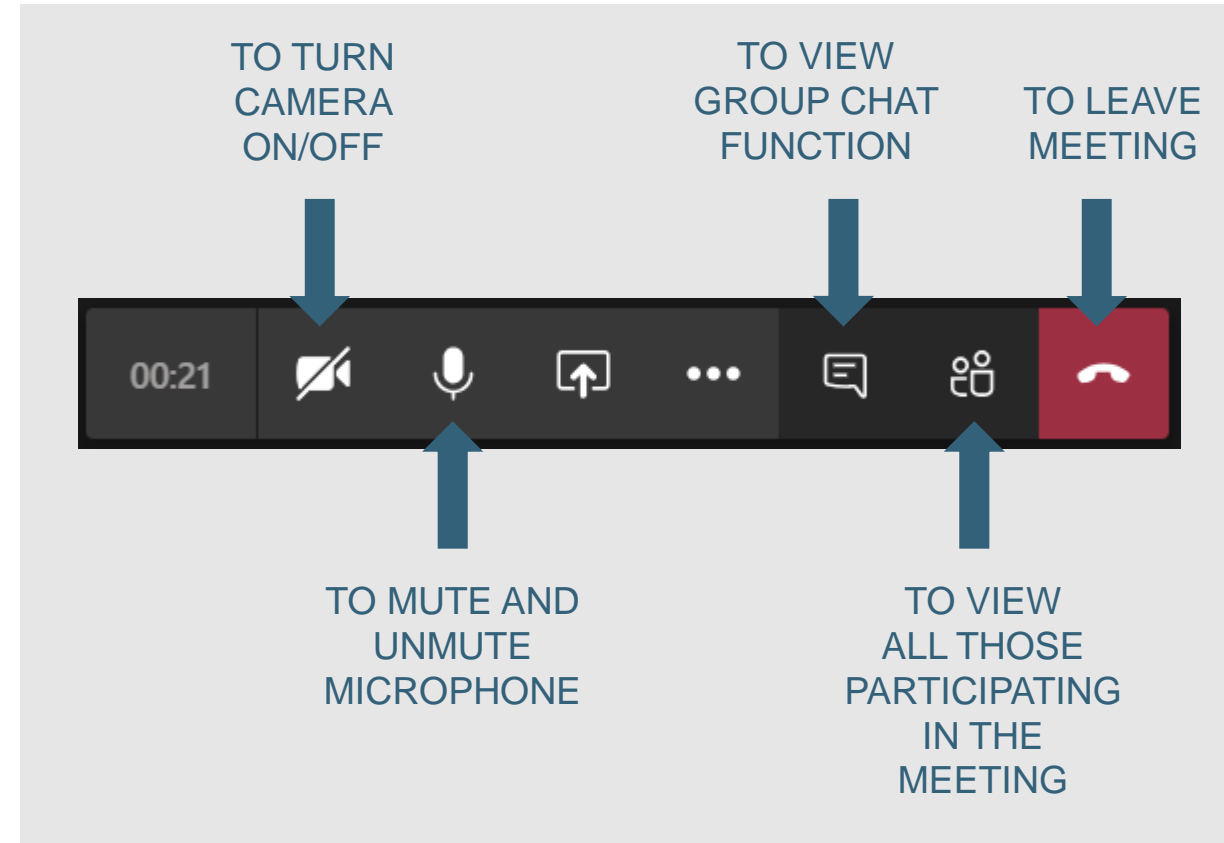


MORPC
MID-OHIO REGIONAL PLANNING COMMISSION

WELCOME!

The meeting will begin shortly.

- Please **mute** your microphone or telephone unless speaking.
- **If using a phone line** for audio:
Mute the microphone on Teams and turn the volume all the way down on your computer (to reduce feedback and echoes).
You may need to press *6 to unmute yourself during the meeting.
- **Questions** can be input into the chat function.



Meeting Logistics

- Video off and microphones muted to limit background noise
- Questions can be submitted through the chat or email (totulana@morpc.org)
- You can also request to un-mute for sharing a longer comment.
- If you are having technical problems, please try re-joining the meeting.
- The presentation slides will be shared after the meeting.

THANK YOU!



Equity in Active Transportation

Stefanie Brodie, Toole Design



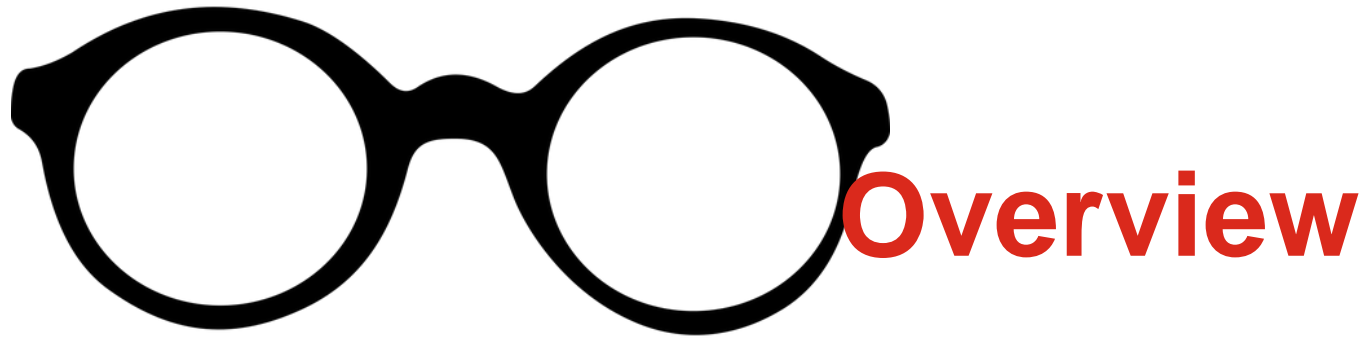
MID-OHIO REGIONAL
MORPC
PLANNING COMMISSION

2020 Vision: Through the Lens of Equity

Stefanie Brodie, PhD

Senior Researcher | Associate

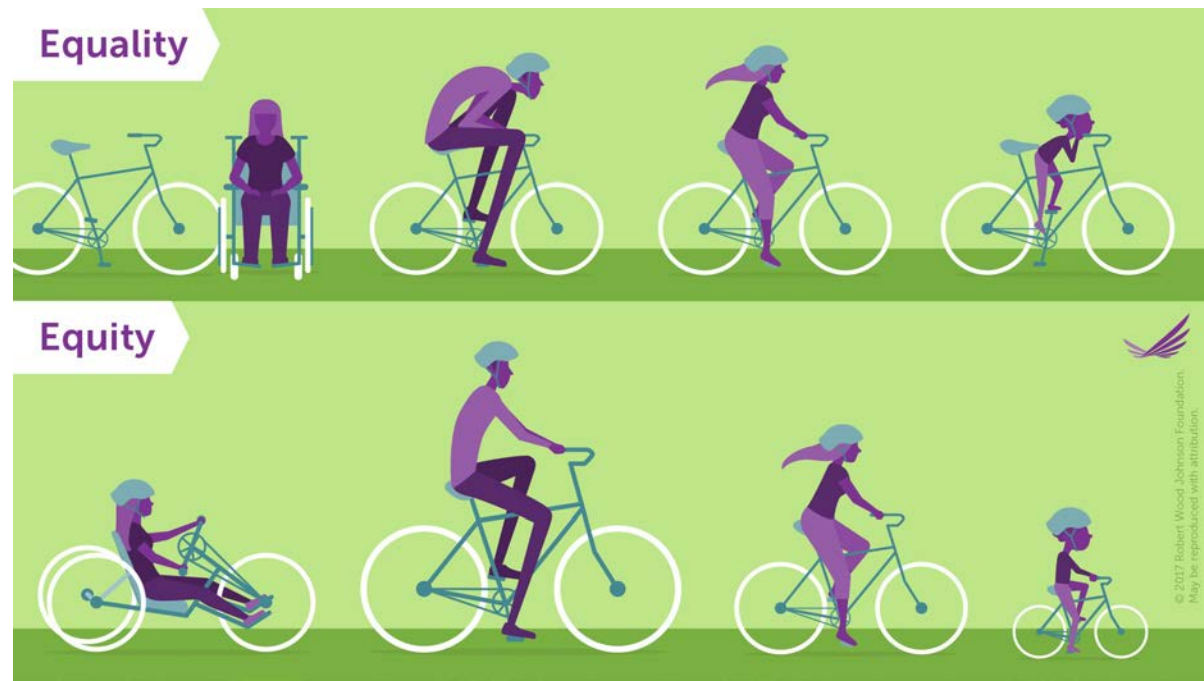
May 20, 2020

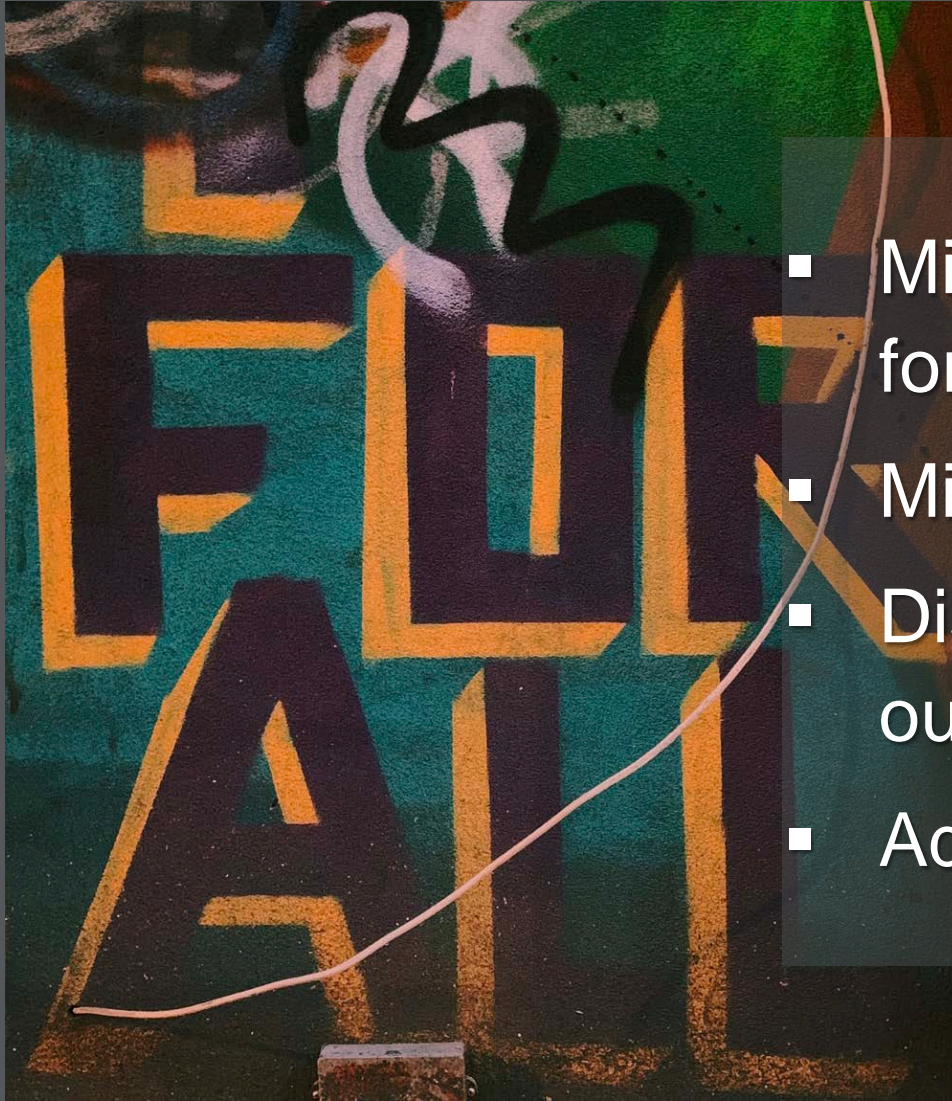


- Hindsight
- Seeing past the numbers
- Looking at where we are
- Vision for the future

What is equity?

- Fair and just
- Account for past inequality
- Adjust for current disadvantages and needs
- Allow overall improvement



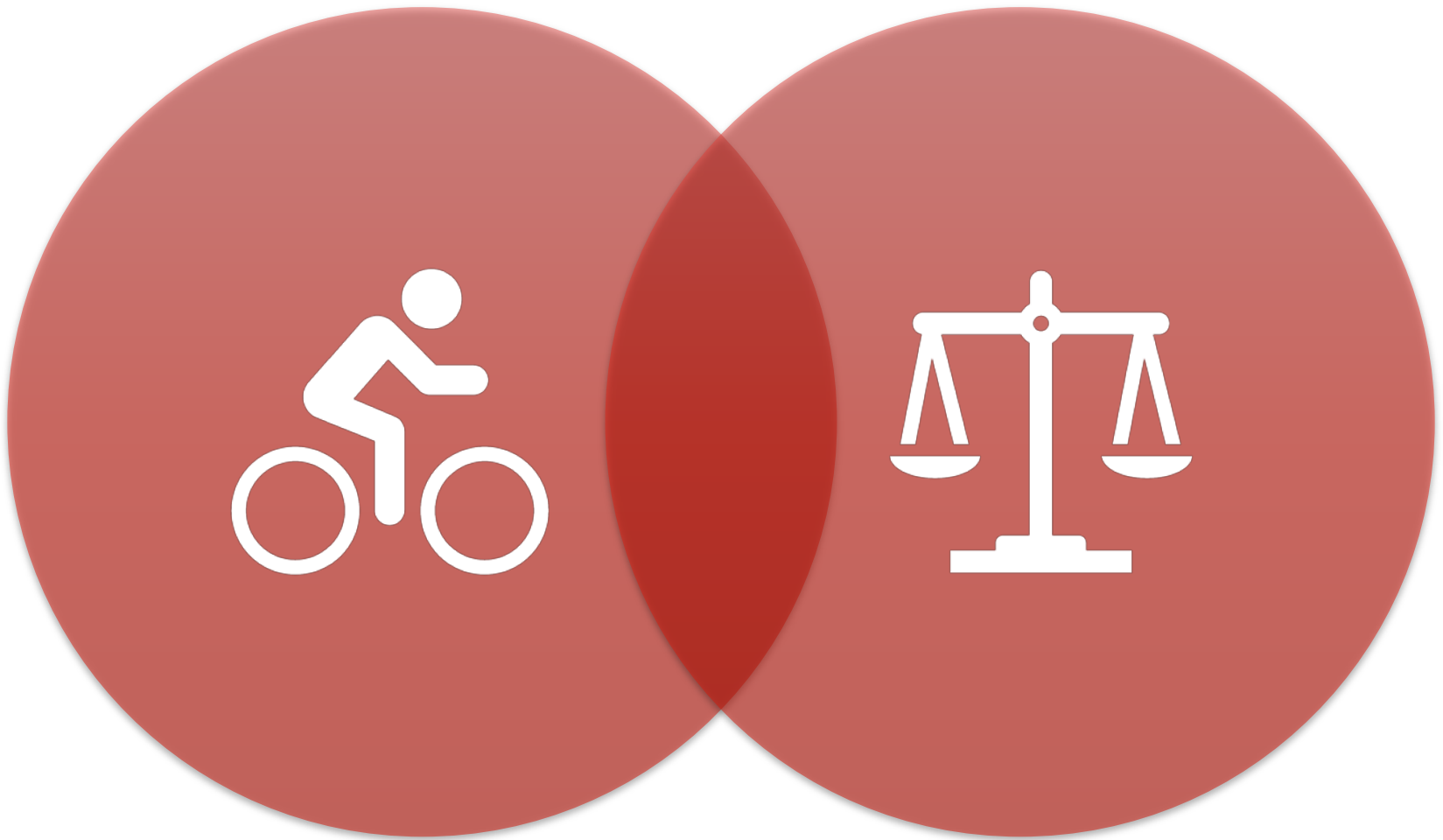


- Minimum level of service for all
- Minimize adverse effects
- Distribute beneficial outcomes
- Address historical impacts

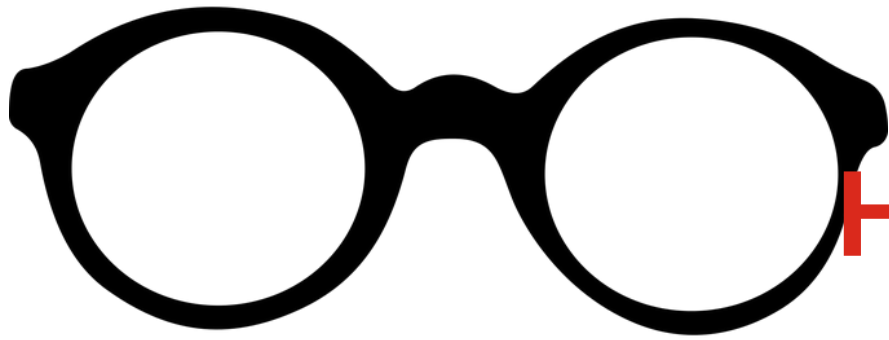
Why include equity in transportation planning?

- Transportation as a public good
- Disparate accessibility – Social exclusion
- Environmental Justice and Title VI
- Planning goals





Active transportation's role in equitable
transportation systems



Hindsight

- What is equity?
- Why is it needed in transportation planning?
- How does active transportation relate?



**In a data-driven world,
how do we incorporate
less-quantifiable goals
like equity?**

Performance-Based Planning

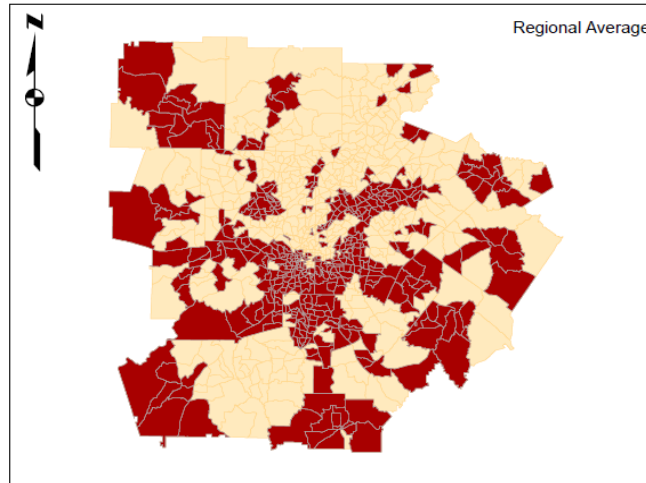


Standard Practice

Identify
populations



Create
zones



Analyze
disproportionality



Limitations of Standard Practice

- Becomes a final “check” and not incorporated into decision making
- Favors concentrations of populations
- Focus on central tendencies masks distributions of impacts
- Analysis does not account for or include temporal and cumulative effects

Equity Evaluation

- Standard Practice
 - Is it equitable?
- Instead...
 - What questions do we need to ask and answer?

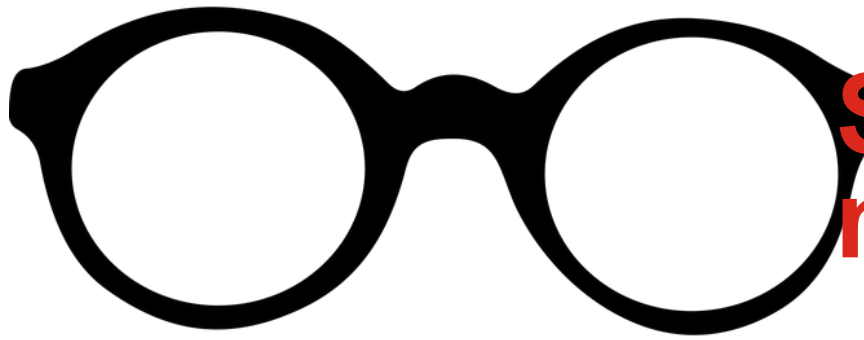


Data has a better idea

Data should inform decisions, not be the decision.

This analysis points to the questions that professionals should be asking to achieve more equitable outcomes.

**Qualitative data
is DATA.**

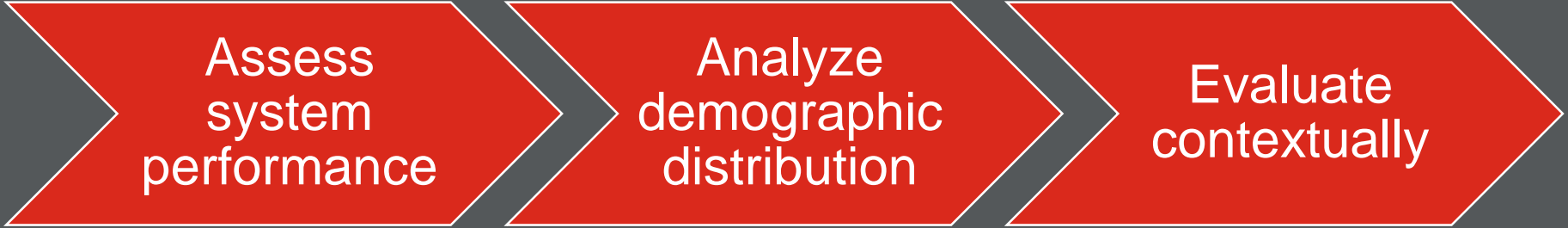


Seeing past the numbers

- How do we incorporate equity into data-driven decision making?
- What are the limitations of current analyses?
- What should an equity analysis tell us?



Performance-based Equity Evaluation



Assess
system
performance

Analyze
demographic
distribution

Evaluate
contextually

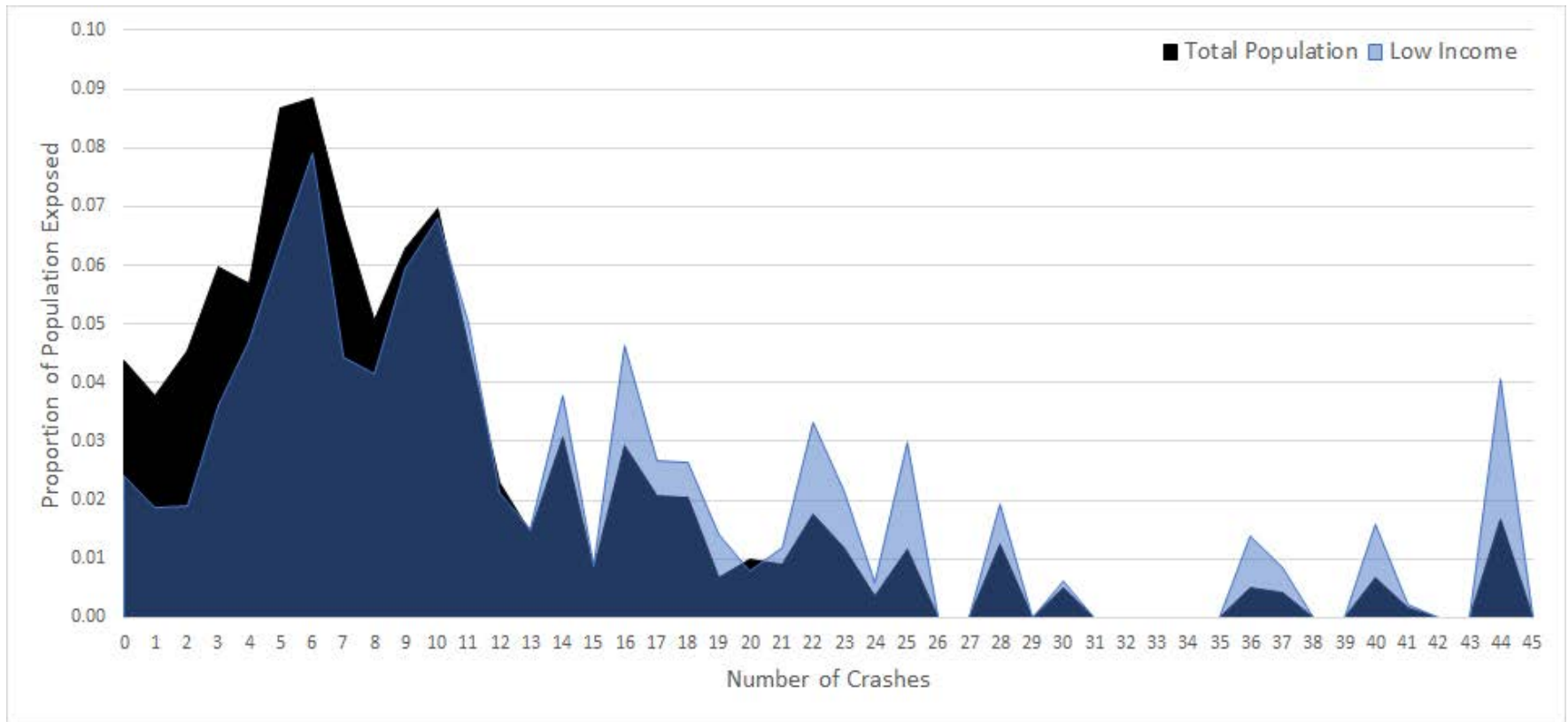
Maximax

(Martens et al. 2012)

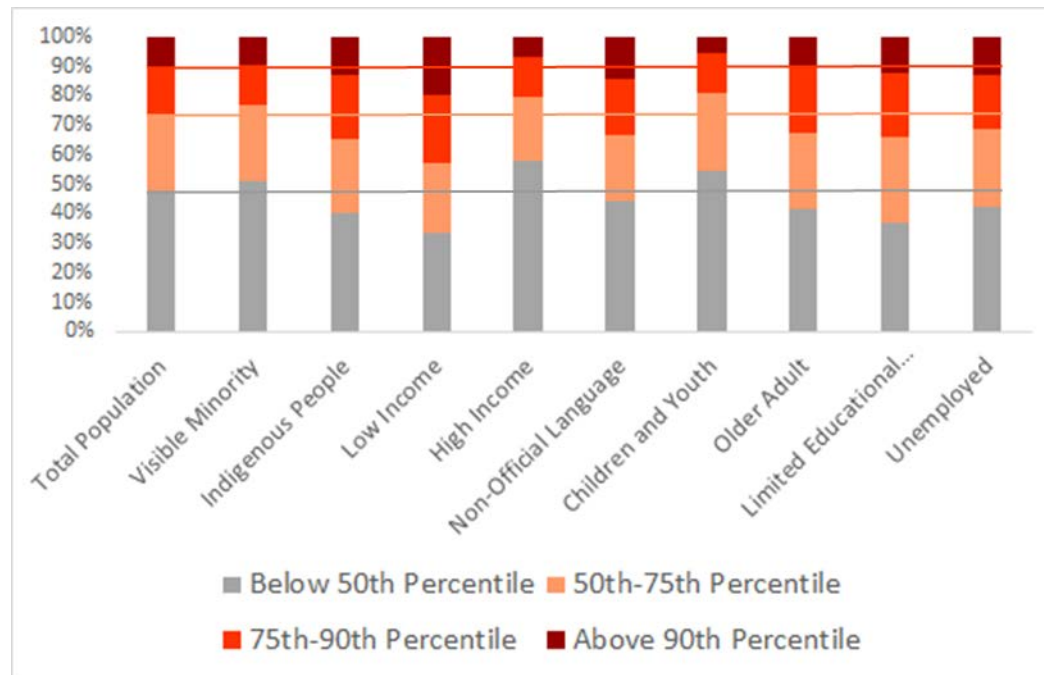


- Improves average impacts
- Focus on least advantaged
- Distributes both the negative and positive impacts of public investments

Edmonton Safe Mobility Strategy



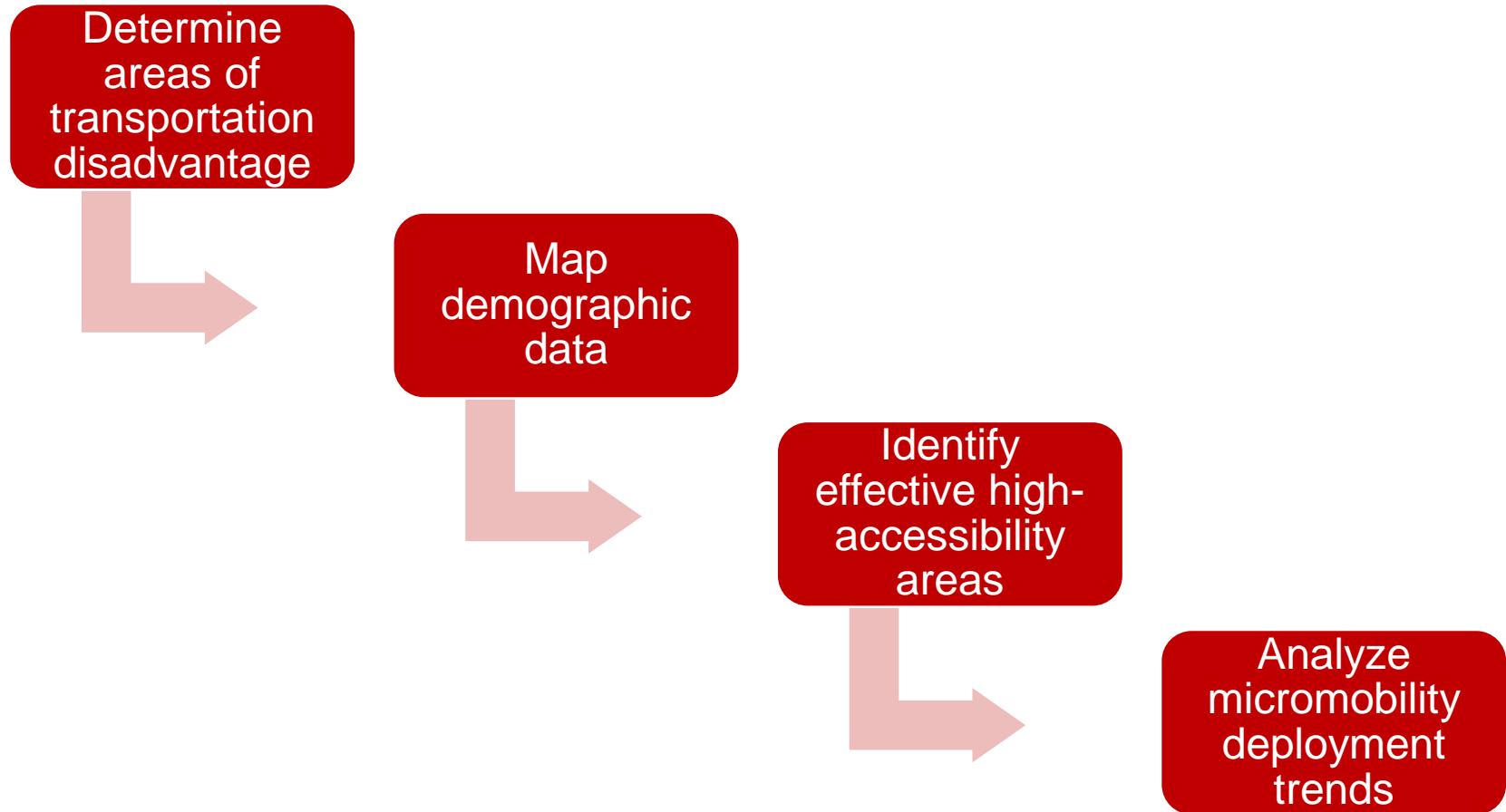
Edmonton Safe Mobility Strategy

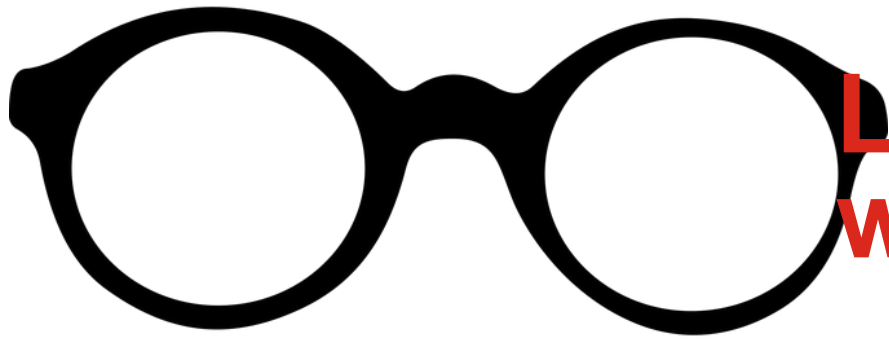


“ The confluence of transportation disadvantage and sociodemographic disadvantage that limits accessibility and social inclusion. ”

Adapted from Farber and Lucas

LADOT Equity Zone Analysis





Looking at where we are

- Where are we now?
- Where are we going?
- How might we get there?



Amid the pandemic...

- Back to normal?
- What can we learn about inequities?
- How can we help now?
- How do we move forward?



“ The problem with
an equity lens is
that you can take
it off.

”

Paraphrased. Tamika Butler.



- What are the cumulative impacts?
- What does it mean to go back to normal?
- How do we maintain the vision?



Hindsight

—
Seeing past the numbers

—
Looking at where we are

—
Vision for the future

Active Transportation Committee



MID-OHIO REGIONAL
MORPC
PLANNING COMMISSION

Active Transportation Committee

- Sub-committee to TAC
 - Advise TAC on Active Transportation
- Committee Co-Chairs
 - Two-year terms
 - Current term will end Dec 2021
- Working Groups
 - Complete Streets Policy Update
 - Active Transportation Plan



MORPC

Action Plan



GOALS:

1. Advocate for and pursue the implementation of innovative and low-stress active transportation infrastructure throughout Central Ohio.
 - Through policies, programs, initiatives, and resources for MORPC members
2. Collaborate on and coordinate efforts to significantly reduce severe injuries and fatalities for people walking and bicycling **or using active transportation facilities** in our region.
 - By supporting Safety Plan implementation
3. Increase regional stakeholders' understanding of the sustainability, economic, **health**, social, and transportation benefits of a connected active transportation network.
 - Through education opportunities like Central Ohio Greenways Forum or Summit on Sustainability

2020-2050 Metropolitan Transportation Plan



MORPC

MTP OBJECTIVE:

REDUCE THE PERCENTAGE OF COMMUTERS DRIVING ALONE AND INCREASE THE PERCENTAGE OF COMMUTERS RIDING TRANSIT, BICYCLING, OR WALKING

SYSTEM DEVELOPMENT STRATEGIES

Bike and Pedestrian Infrastructure

- Collaborate to build high comfort bicycle and pedestrian infrastructure through development regulations
- Increase the quantity and quality of data on bicycle, pedestrian, and similar modes travel behavior
- Expand high comfort bicycle and pedestrian networks through the implementation of complete streets
- Implement the Central Ohio Greenways trail vision
- Update the Active Transportation Plan and implement it to create high comfort regional pedestrian and bicycle transportation networks
- Make neighborhoods walkable and bikeable through infrastructure projects that fill gaps in the high comfort pedestrian and bicycle networks
- Ensure neighborhoods and employment locations have high comfort connections for pedestrians and bicyclists to the regional pedestrian, bicycle and transit networks
- Facilitate multi-jurisdictional dialogue to improve opportunities through collaboration

	2020 MTP	2025 TARGET	2050 TARGET
	6%	7%	10%

Survey





VULNERABLE ROADWAY USERS ACTION PLAN

STRATEGY 3: Improve data on vulnerable roadway users. (cont.)

#	ACTION LEAD	DESCRIPTION	OUTPUT MEASURE	TIMELINE
3.3	LPA MORPC ODPS	Identify issues and challenges regarding crash report coding and degree of report completeness/accuracy.	# of yearly qualitative assessments	Short
3.4	LPA MORPC ODPS	Standardize the crash reporting process at the regional level.	Crash reporting standardization	Medium
3.5	LPA MORPC OACP ODOT ODPS	Work with law enforcement and communities to identify challenges with and improve the process for responding to and reporting crashes with vulnerable roadway users.	Policies / legislation adopted	Medium

Active Transportation Plan

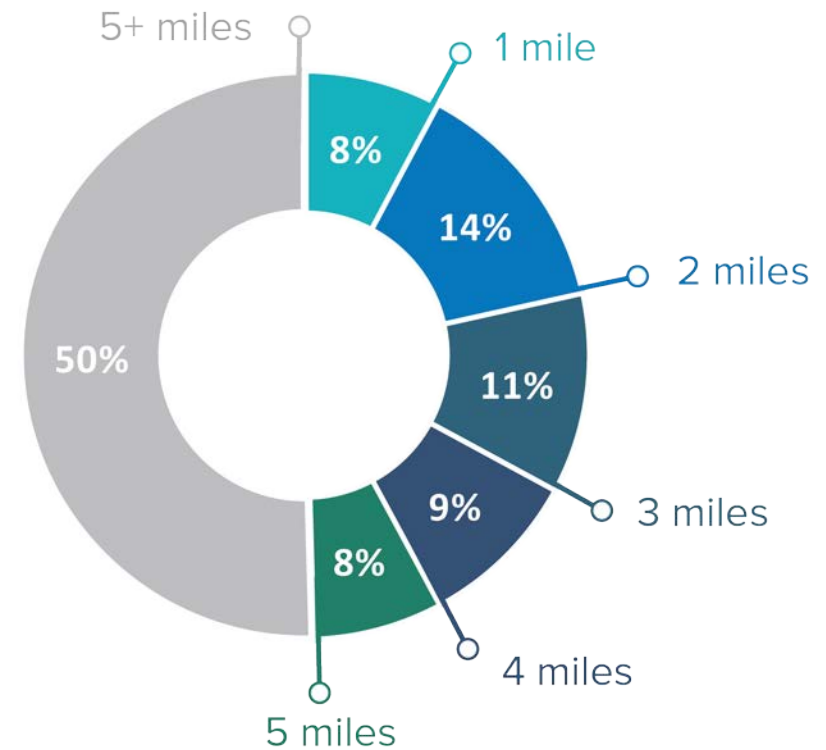
Stephen Patchan, MORPC



MORPC
MID-OHIO REGIONAL PLANNING COMMISSION

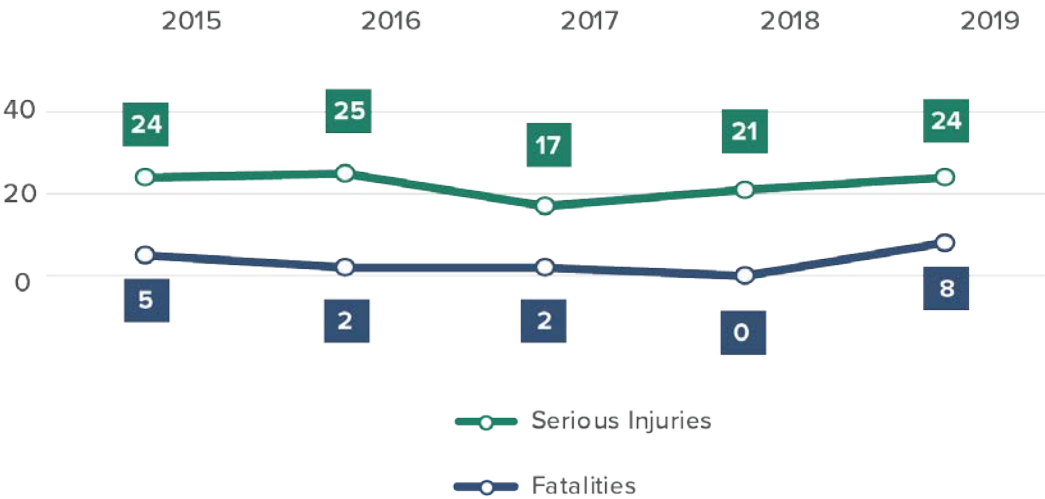
Regional Travel Patterns

Percentage of **Short Trips** by Length

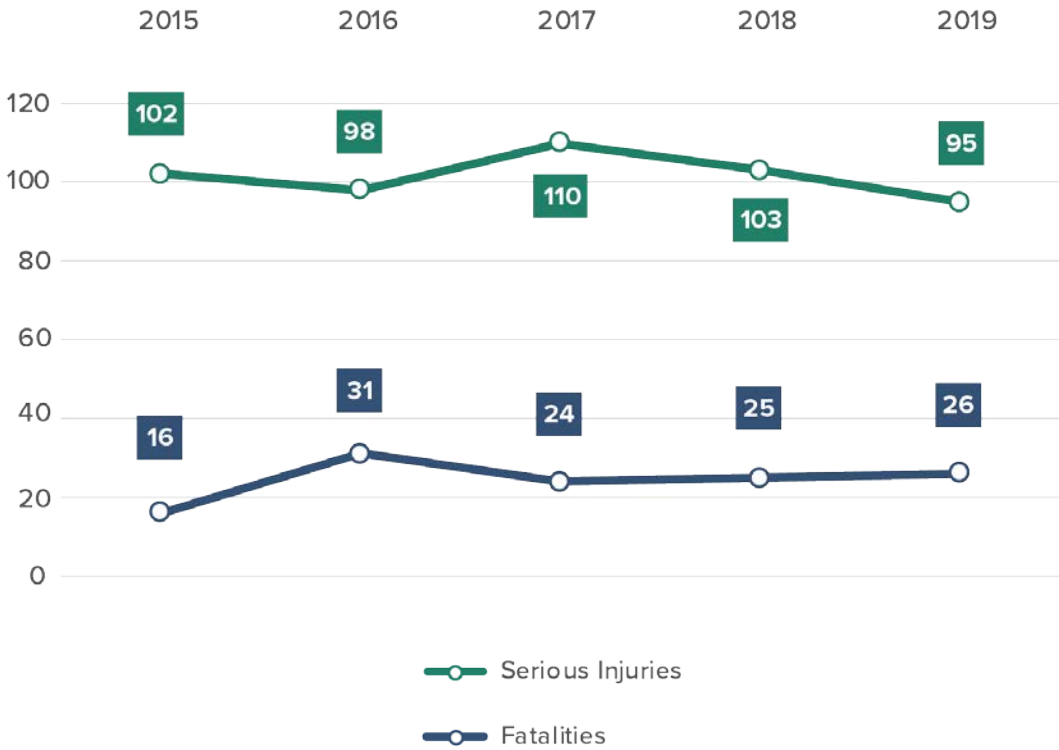


Crash Data 2015-2019

Crashes involving People Bicycling



Crashes involving People Walking



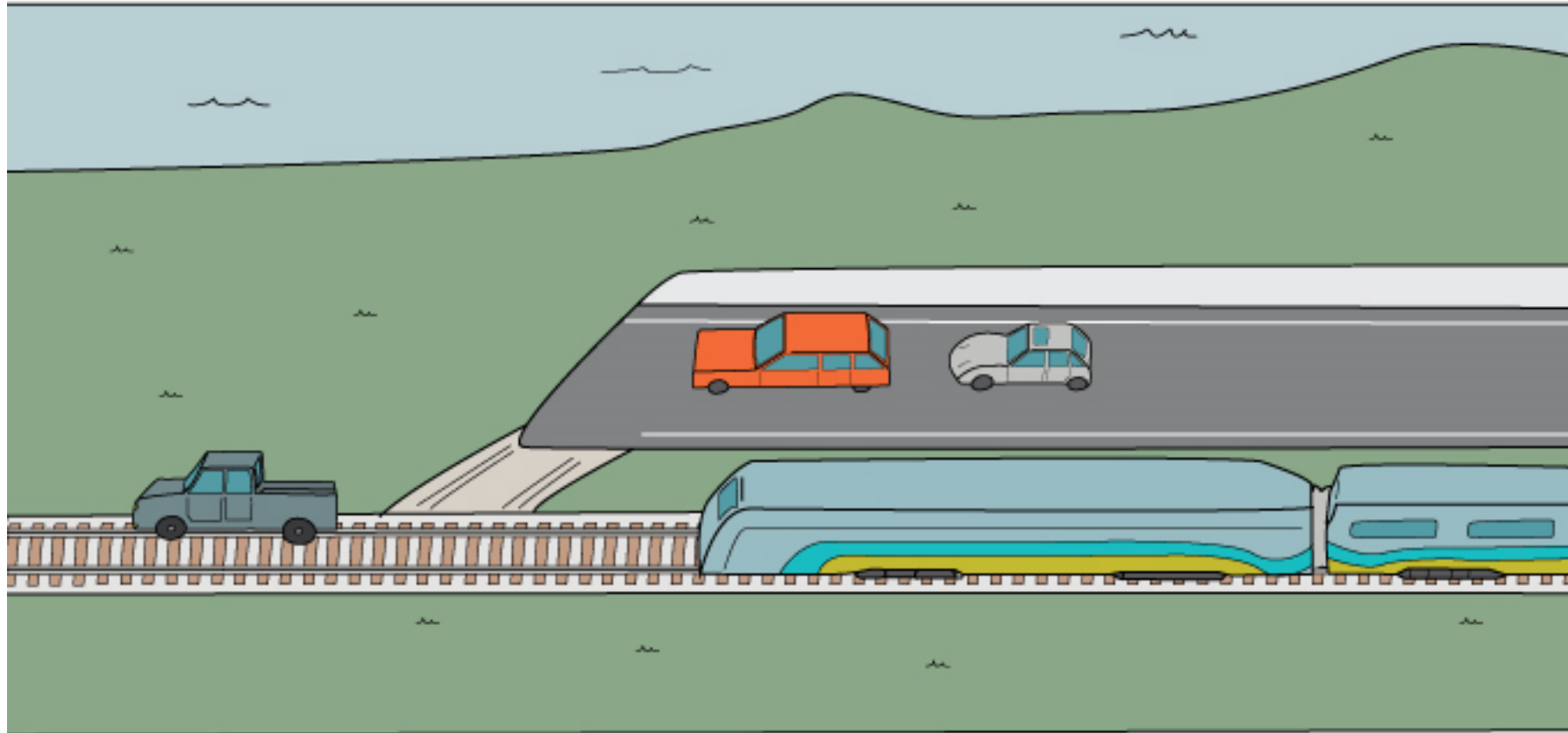
Background



Background

But we do need a complete system

"DAMN, THE ROAD LANE ENDS AGAIN! I HATE SHARING THE TRACKS WITH THE TRAIN."



@STEVEPADAMS

STEVEPATRICKADAMS.COM

Four Types of Transportation Cyclists in Portland

By Proportion of Population



NOACA Questions

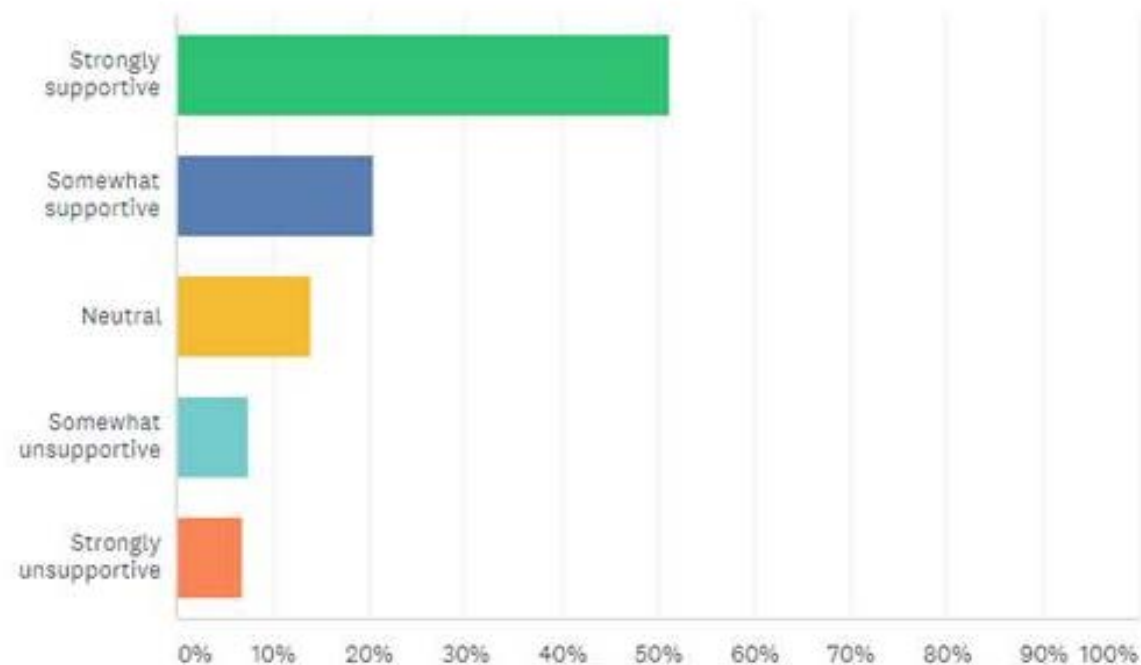
Imagine your community has plans to build a new network of trails for biking and walking. This means that eventually, **trails** would connect your home to shopping, parks, and jobs. Construction is expensive, however, and the trails may be built in small sections over the course of 20-40 years. Below are several possible actions. *Please rank them in order of your preference, with 1 being your most preferred option and 4 being your least preferred option.*

	1	2	3	4	TOTAL	SCORE
I would prefer that only small sections of the trail be constructed at a time, even though this approach will take 20-40 years to complete.	14.59% 268	43.17% 793	38.60% 709	3.65% 67	1,637	2.69
I would prefer a new ballot initiative to build the trail network in 3-5 years.	58.80% 1,092	19.82% 368	13.62% 253	7.75% 144	1,857	3.30
I would prefer my community build a less extensive, less costly system. For example, bike lanes, sharrows, and bike boulevards (bike routes on residential streets).	21.62% 402	34.27% 637	41.90% 779	2.21% 41	1,859	2.75
I would prefer my community not attempt to build a connected trail network.	6.83% 126	2.22% 41	5.09% 94	85.86% 1,585	1,846	1.30

NOACA Survey Questions

Sometimes, it improves safety for everyone on the road if cars travel more slowly. How would you feel about some of your car trips taking up to 5 minutes longer, if it meant you had greater safety?

Answered: 1,911 Skipped: 5



Kick Off Overview

- Project Overview and Timeline
- Existing Conditions
- Vision and Goals Activity
 - Motivation for participating
 - Info/Data Requests
 - Missing Perspectives
 - Organization's Goal
 - Metrics



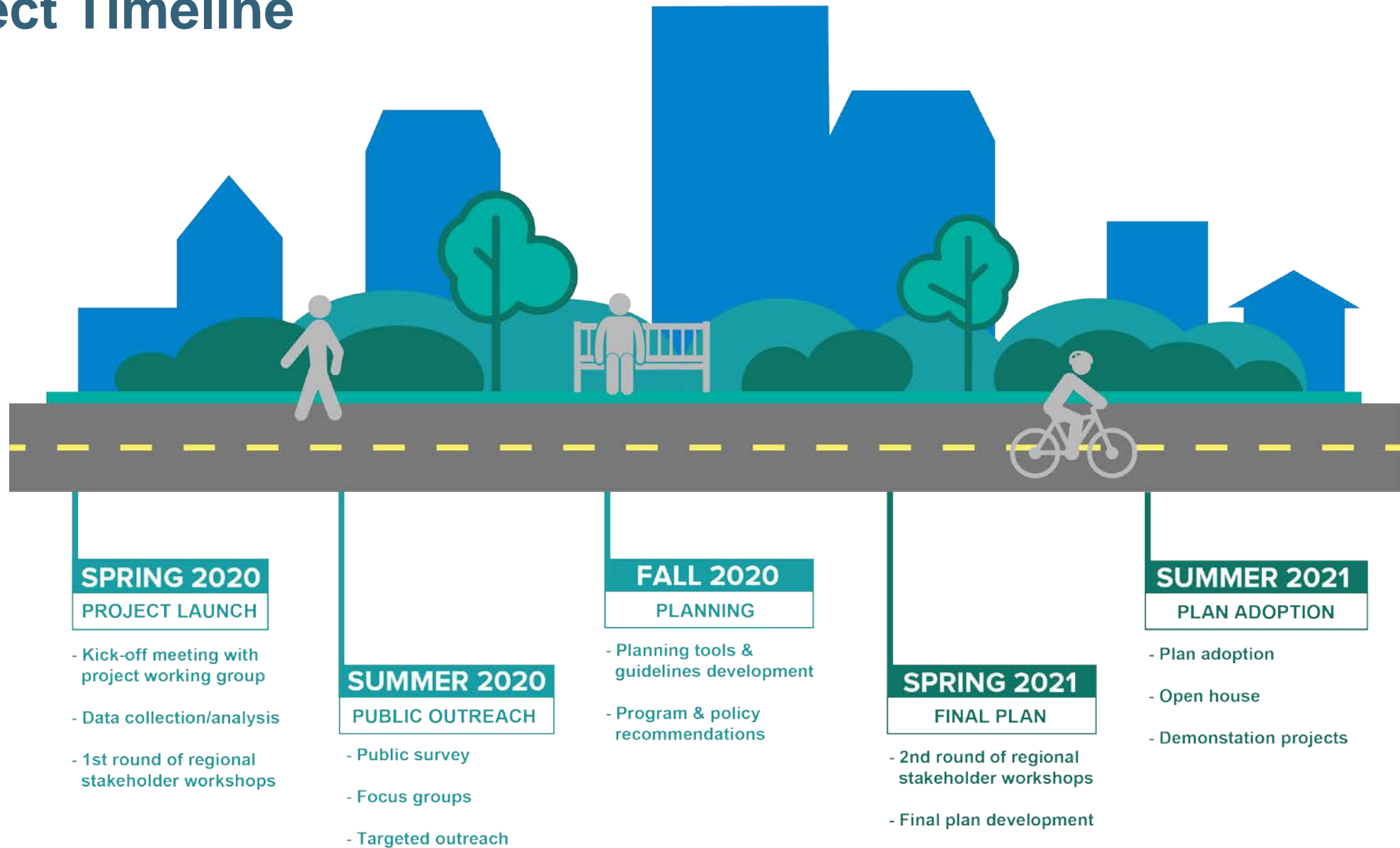
Next Steps

- Stakeholder Meeting #1
 - 7/31/20

- Steering Committee #2
 - 9/1/20



Project Timeline



STEPHEN PATCHAN

Assistant Director, Planning & Sustainability

T: 614.233.4161

spatchan@morpc.org

LAUREN CARDONI

Senior Planner

T: 614.233.4128

lcardoni@morpc.org

JENNIFER NOLL

Principal Planner

T: 614.233.4179

jnoll@morpc.org



Updates and Announcements

July 2020



MORPC
MID-OHIO REGIONAL PLANNING COMMISSION

Legislative Update

Joe Garrity, Director of Government Affairs



MORPC
MID-OHIO REGIONAL PLANNING COMMISSION

Legislative Update

- SB 285 – Hands-Free Ohio
- SB 73 – Yielding to Peds
- HB 288 – Eminent Domain Laws
- HB 384 – Speed Limits
- HB 97 – Bicycle Helmets



MORPC
MID-OHIO REGIONAL PLANNING COMMISSION

Attributable Funding Update



MID-OHIO REGIONAL
MORPC
PLANNING COMMISSION

MORPC-Attributable Funding Timeline



- ~~March~~: MORPC adopts Policies
- ~~June 3~~: MORPC hosts applicant workshop, 2:30
- **July 10**: Commitment Update Form due
- **July 17**: Screening Applications for new funding due
- **Early August**: Staff completes review of Updates. Provide feedback to applicants and revised forecast of available funding
- **October 9**: Final Applications due
- **November 4**: Ad-interim AFC members change
- **October - January**: Staff review and score applications & AFC review and recommends funding commitments
- **February 2021**: Draft list of funding commitments available for public review and comment
- **May 2021**: MORPC Adopts list of attributable funding commitments



Central Ohio Greenways

Melinda Vonstein, COG Coordinator



MID-OHIO REGIONAL
MORPC
PLANNING COMMISSION

CENTRAL OHIO GREENWAYS TRAIL SURVEY



Share... Share...Share!

- Central Ohio Residents
 - Trail Users
 - Non-Trail Users
 - Neighborhood leaders
- We want to hear from Everyone!

The Results will:

- Validate Trail Count Data
- Inform the COG Impact of Trails Projects

www.surveymonkey.com/r/centralohiogreenwayssurvey



MORPC

TDM Program & Campaigns

Lexi Petrella, Associate Planner



MID-OHIO REGIONAL
MORPC
PLANNING COMMISSION

People who Bike Campaign - August



- Replacing our full Bike Month plan
- Partnership between MORPC's Mode Shift Coalition and Central Ohio Greenways
- Focus on breaking down stereotypes of bicyclists
 - Humans of New York style interviews with bicyclists in our communities
 - Videos and written posts
 - Highlight local bike shops and shop owners
 - Strong diversity focus
 - 2 young children, 2 young adults, 2 adults, 2 older adults
- Recognizing biking as a transportation and recreation mode
- Meet recommended physical activity guidelines



People who Bike Campaign - August



MORPC

- Digital and printed passport of activities
 - Activities can be accomplished anywhere in the region
 - Completed passports will be submitted for prizes
 - No trip logging
- Four age categories
 - 3-6 yrs
 - 7-12 years
 - 13-16 yrs
 - 25+ yrs (*25-65 is the focus*)
- Educational resources to be provided for each age group
- Virtual rides to highlight regional trails
- Recorded safety and fix-it videos
- More to come



People who Bike

Sponsorship Information

- Sponsors will contribute to prizes and innovative marketing (radio, tv, print, etc.) to encourage participation
- Sponsors will have logos on the passport and other printed/digital materials
- Multiple levels of sponsorship with benefits

Contact Lexi if you are
interested in being a sponsor
of People who Bike!



MORPC

People who Bike

Next Steps



MORPC

- Help us find bicyclists of Central Ohio to interview.
 - Completed during July
 - 2 young children, 2 young adults, 2 adults, 2 older adults
 - Official consent forms for social media/video will be available
- Have a contact at a local bike shop in our region? Connect me!
- Have a favorite trail route and a go pro?
 - Looking for a variety of lengths and locations
- Have a fun prize idea? Bike related, local business, or other?
- Marketing ideas?

Contact Lexi at apetrella@morpc.org OR join us for a virtual planning conversation this Thursday from 4PM-5PM.

LEXI PETRELLA

Mobility Coordinator

Mid-Ohio Regional Planning Commission

T: 614.233.4132

apetrella@morpc.org

111 Liberty Street, Suite 100
Columbus, OH 43215



MID-OHIO REGIONAL
MORPC
PLANNING COMMISSION



Walk.Bike.Ohio



MORPC
MID-OHIO REGIONAL PLANNING COMMISSION



OHIO DEPARTMENT OF
TRANSPORTATION



Virtual Stakeholder Meeting

Training Opportunities

April 2020



MORPC
MID-OHIO REGIONAL PLANNING COMMISSION

Upcoming Webinars & Available Resources



MORPC
MID-OHIO REGIONAL PLANNING COMMISSION

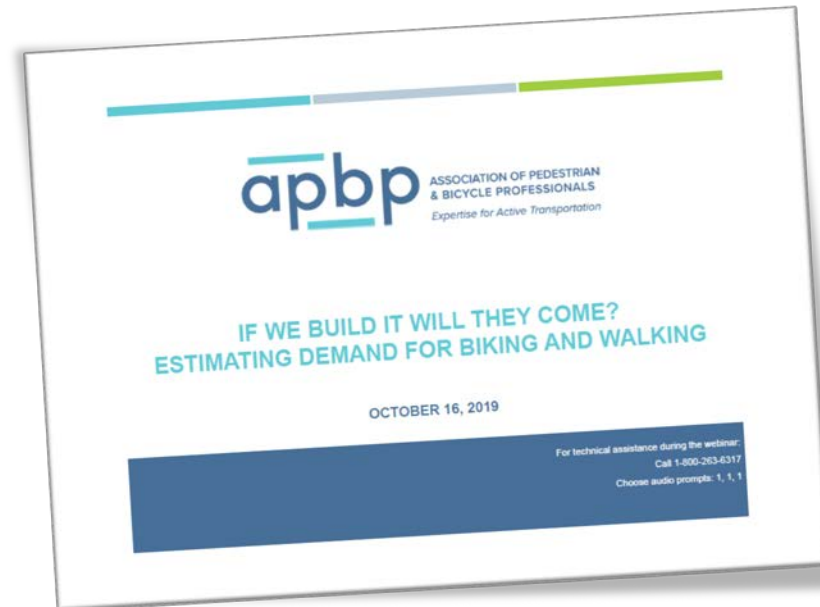
- **Ohio Safety Project Processes and Funding Course**
 - Four 1.5-hour webinars: July 15, 20, 22 and 23
 - Overview of the safety project process, from planning to construction
 - *Audience: Local public roadway agencies (such as county, city, village and township)*
- **USDOT Summit on Pedestrian Safety**
 - Three 1.5-hour webinars : July 8, 15, and 28
 - Discuss pedestrian safety issues and improving pedestrian safety
- **New FHWA Bicycle Facility Design Course**
 - New, 8-hour, web-based course, offered by NHI at **no cost**.
 - Online training on planning, designing, and implementing bicycle facilities.

APBP Webinars



MORPC
MID-OHIO REGIONAL PLANNING COMMISSION

- [2020 Monthly Series Webinars:](#)
 - **July 15** – Victim Blaming in Crash Reporting: What it is and How to Stop it
 - **August 19** – Transit Station Connectivity: How to Get it Done!
 - **September 16** – Innovative Applications of Pedestrian Crossing Guidance
- Upcoming Free Webinars:
 - **July 22** – [Third Quarter U.S. Federal Policy Update](#)



Final Announcements



MORPC
MID-OHIO REGIONAL PLANNING COMMISSION

THANK YOU!

