



MID-OHIO REGIONAL
MORPC
PLANNING COMMISSION

111 Liberty Street, Suite 100
Columbus, Ohio 43215
morpc.org

T. 614. 228.2663
TTY. 1.800.750.0750
info@morpc.org

ACTIVE TRANSPORTATION COMMITTEE MEETING

January 26, 2020
9:00 AM – 11:00 AM

AGENDA

- 1. Welcome and Logistics (5 min)**
- 2. LinkUS (40 min)**
 - a. *Justin Goodwin, City of Columbus*
- 3. Central Ohio Greenways (20 min)**
 - a. Trail Prioritization Study
 - b. Regional Trail Vision
- 4. ATP Update (10 min)**
 - a. Timeline
 - b. LTS Data Review
 - c. April (Q2) Meeting Poll
- 5. ATC Items (30 min)**
 - a. Survey Summary
 - b. MTP Goals Discussion
- 6. Member Roundtable (10 min)**
- 7. Other (5 min)**

Active Transportation Committee

January 26, 2021

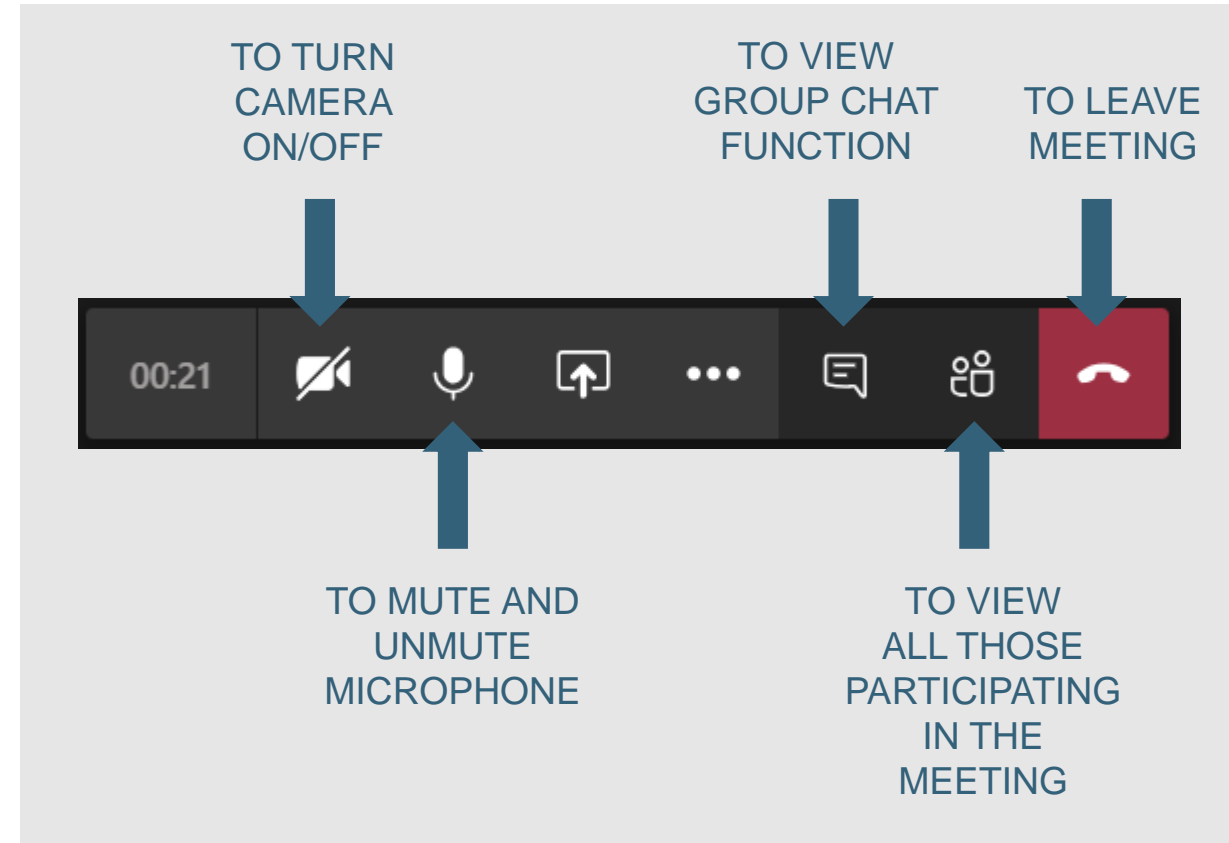


MORPC
MID-OHIO REGIONAL PLANNING COMMISSION

WELCOME!

The meeting will begin shortly.

- Please **mute** your microphone or telephone unless speaking.
- **If using a phone line** for audio:
Mute the microphone on Teams and turn the volume all the way down on your computer (to reduce feedback and echoes).
You may need to press *6 to unmute yourself during the meeting.
- **Questions** can be input into the chat function.



LinkUS Update

Justin Goodwin, City of Columbus



MORPC
MID-OHIO REGIONAL PLANNING COMMISSION

Central Ohio Greenways

Melinda Vonstein, MORPC

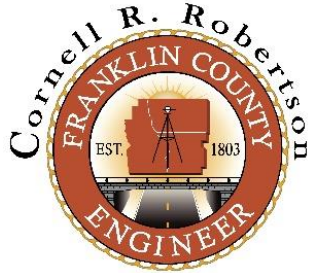


MORPC
MID-OHIO REGIONAL PLANNING COMMISSION



THE CITY OF
COLUMBUS
ANDREW J. GINTHER, MAYOR

DEPARTMENT OF
PUBLIC SERVICE

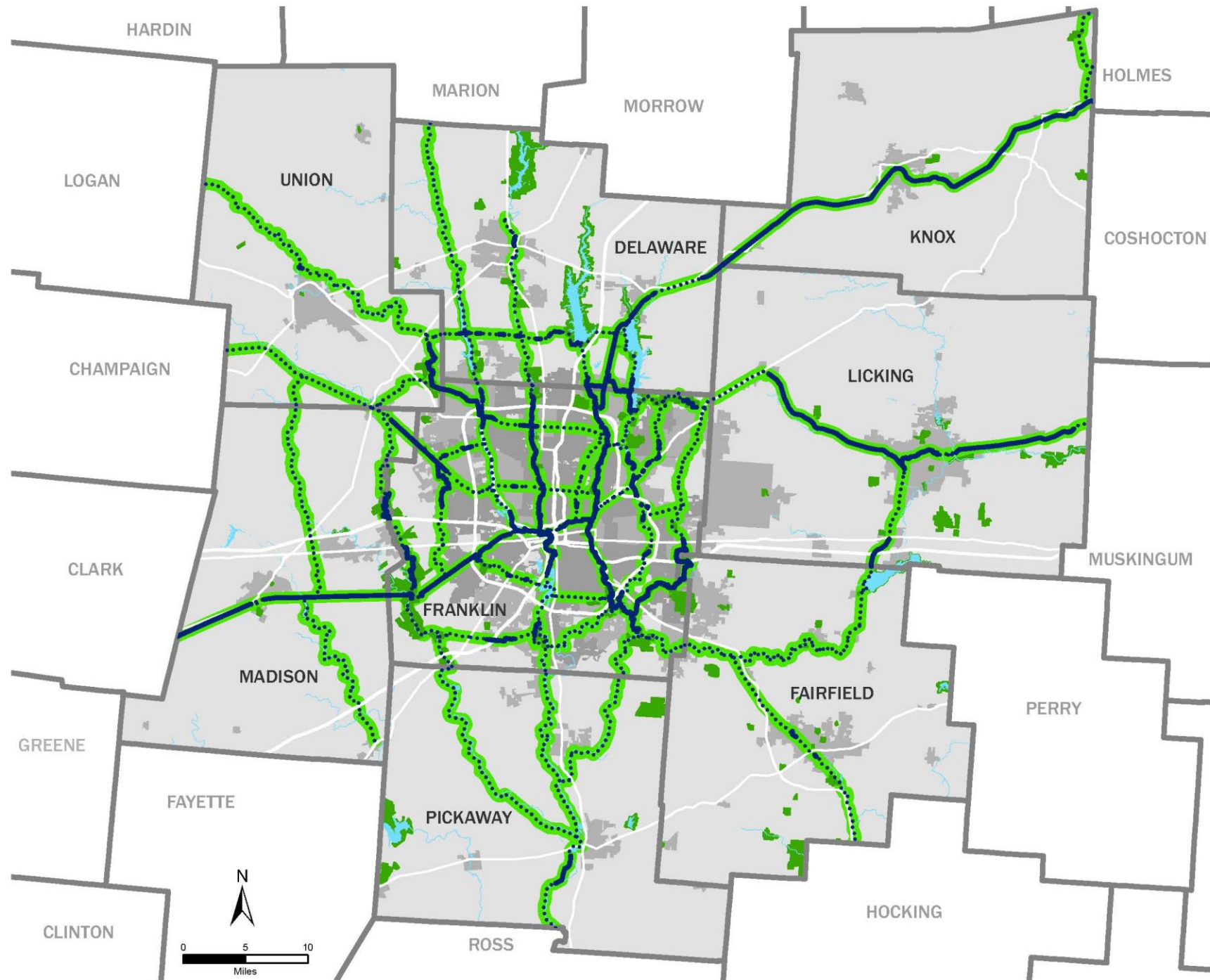


Central Ohio Greenways Trail Prioritization

Active Transportation Committee
January 26, 2021



MID-OHIO REGIONAL
MORPC
PLANNING COMMISSION



Central Ohio Greenway Trails

Regional Trail of Significance

- Existing Multi-use Path
- Proposed Multi-use Path
- Greenway Trail Corridor
- River/Water
- Park/Open Space



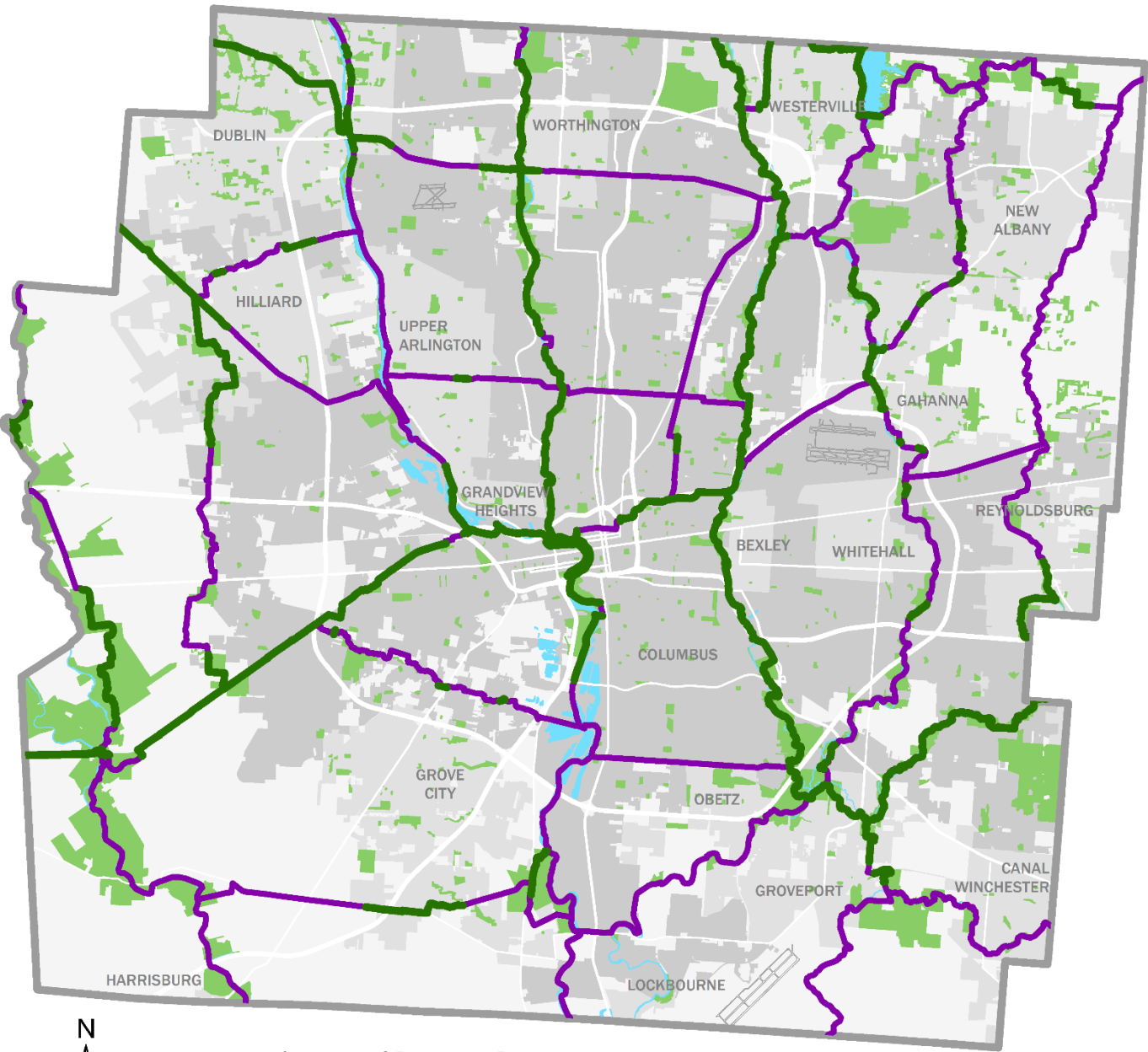
The information shown on this map is compiled from various sources made available to us which we believe to be reliable.
N:\ArcGIS\CORE\COG\COTrailvision_ppt.mxd
6/16/2020

Franklin County

120 Miles
of Existing Trails

176 Miles
of Proposed Trails

PROJECT STEPS
Trail Access
Prioritization
1st/Last Mile
Gap Analysis



Central Ohio Greenway Trails

Franklin County, Ohio

- Existing Multi-Use Path
- Proposed Multi-Use Trail
- River/Water
- Park/Open Space



Ohio
Location
Map

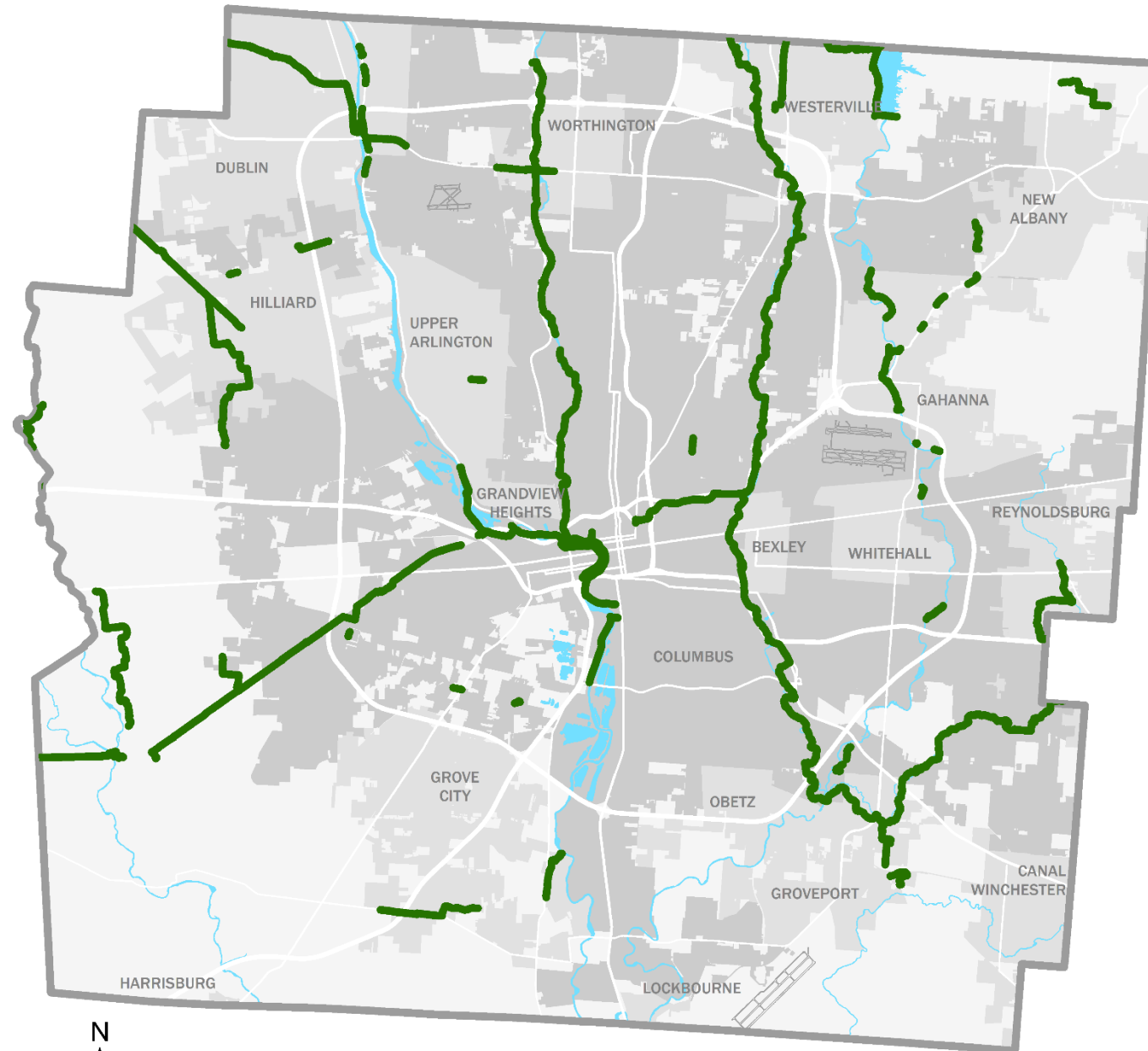


The information shown on this map is compiled from various sources made available to us which we believe to be reliable.
N:\ArcGIS\CORE\COG\Prioritization\Report\COGTrails.mxd
10/13/2020

Central Ohio Greenway Existing Trails

Franklin County, Ohio

120 Miles
of Existing Trail



- Existing Multi-Use Path
- River/Water



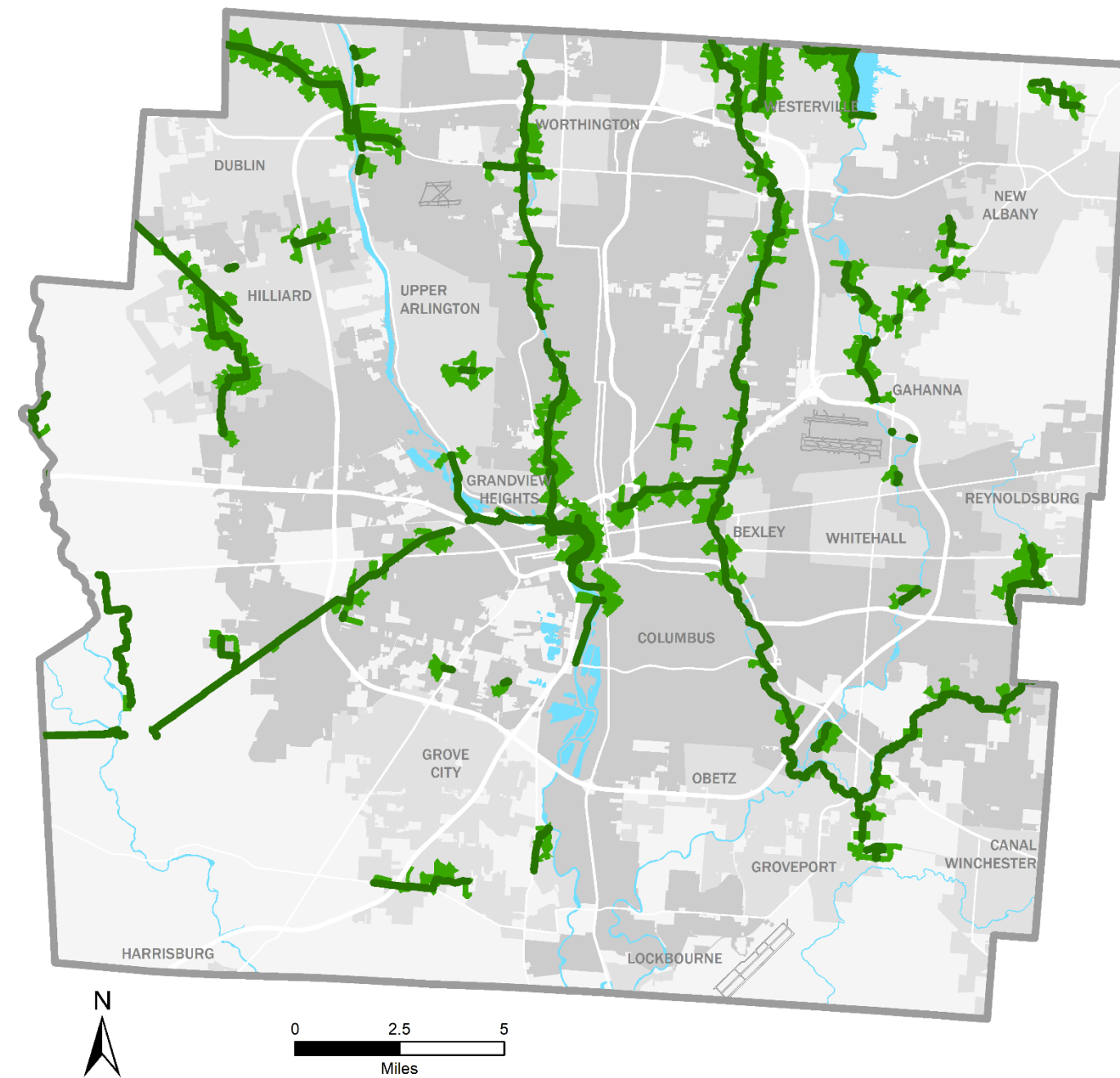
The information shown on this map is compiled from various sources made available to us which we believe to be reliable. N:\ArcGIS\CORE\COG\Prioritization\Report\ExistTrail.mxd 10/13/2020

Trail Access

120 Miles
Existing Trail

14%
Population
Can walk to a trail
within 1/2 mile from
home.

Walk to a trail from
23% of Jobs



Pedestrian
Friendly
Access within
1/2 Mile of
Existing Trail
Franklin County, Ohio

- Existing Multi-Use Path
- Pedestrian Friendly Access to Existing Trail
- River/Water

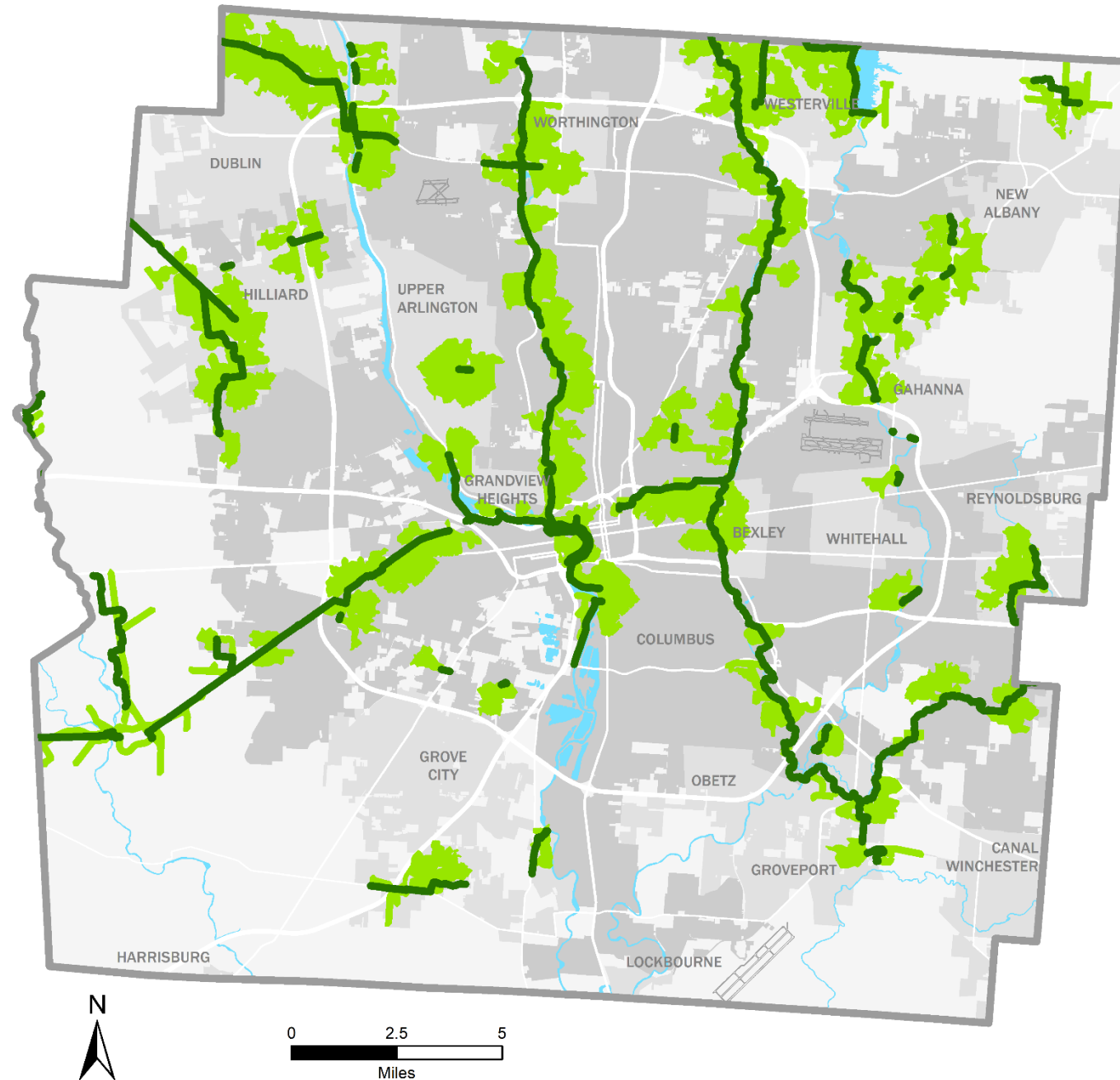


The information shown on this map is compiled from various sources made available to us which we believe to be reliable.
N:\ArcGIS\CORE\COG\Prioritization\Report\Ped_Exist.mxd
10/13/2020

120 Miles
Existing Trail

27%
Population
Can bike to a trail
within 1 mile
from home.

Bike to a trail from
28% of Jobs



Bike Friendly
Access within
1 Mile of
Existing Trail
Franklin County, Ohio

- Existing Multi-Use Path
- Bike Friendly Access to Existing Trail
- River/Water



Ohio
Location
Map



The information shown on this map is compiled from various sources made available to us which we believe to be reliable.
N:\ArcGIS\CORE\COG\Prioritization\Report\Bikefriend_E.mxd
10/13/2020

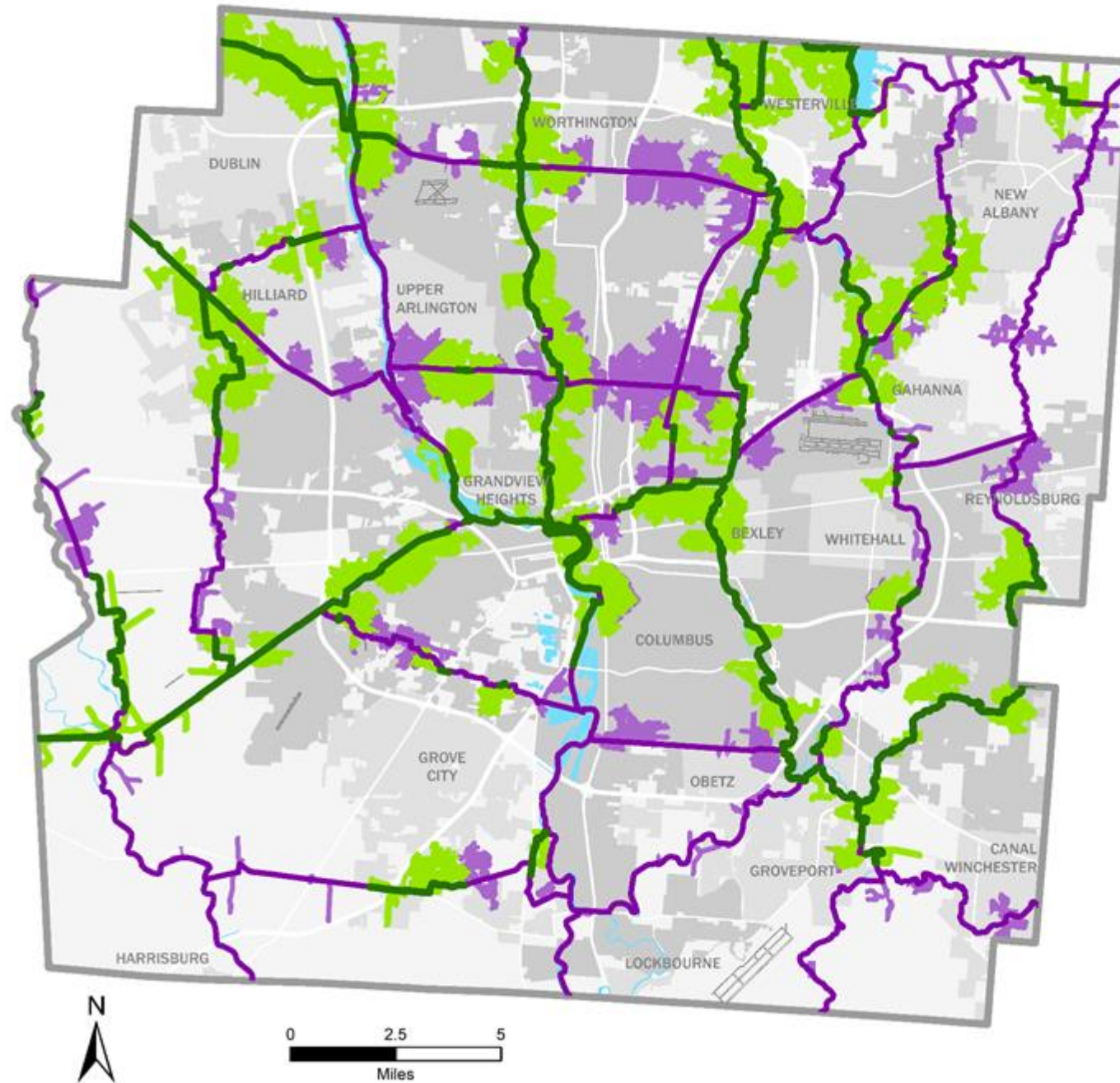
296 Miles

Existing and Proposed
Trail

39%

Population
could bike to a trail
from home

Bike to a trail from
41% of Jobs

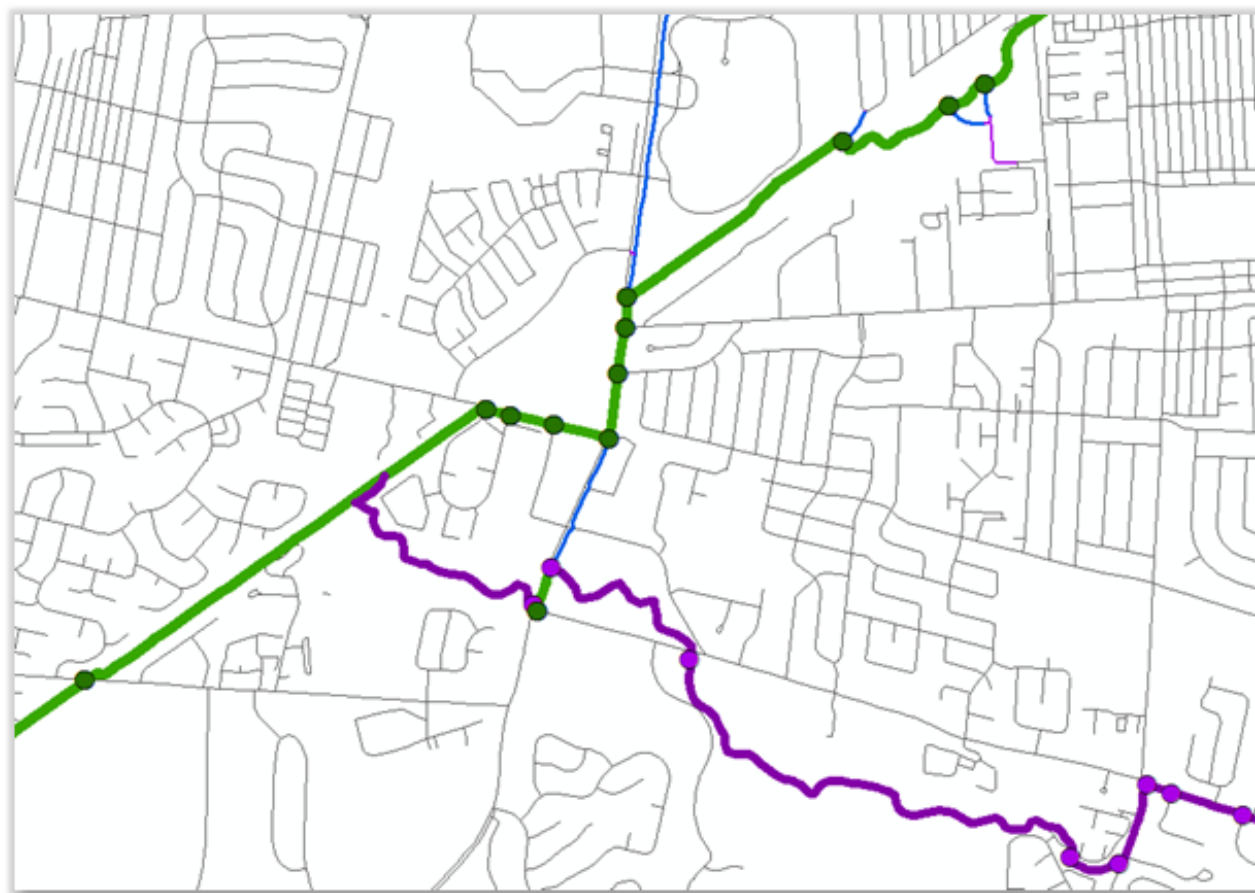


Central Ohio
Greenway
Bike Friendly
Trail Access
Within 1 Mile
Franklin County, Ohio

- Existing Multi-Use Path
- Proposed Multi-Use Trail
- Bike Friendly Access to Existing Trail
- Bike Friendly Access to Proposed Trail
- River/Water

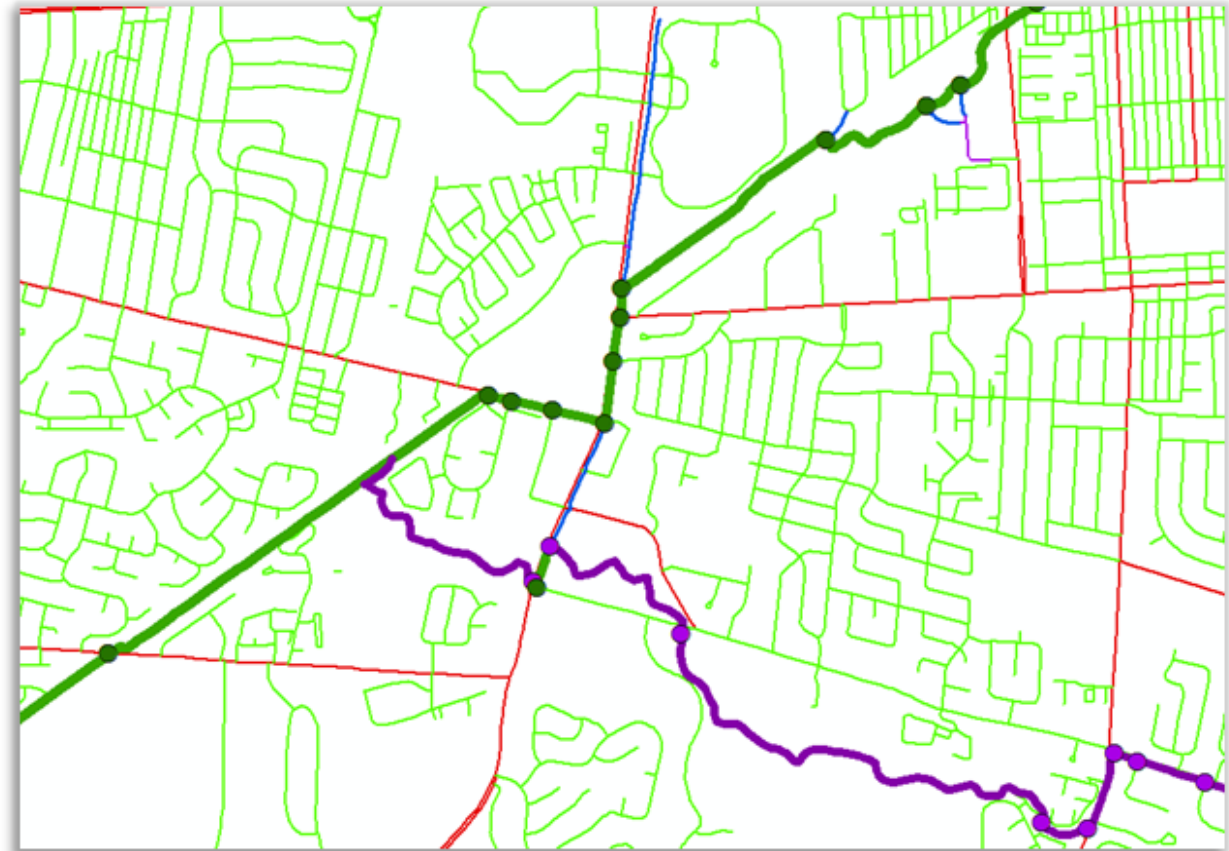


The information shown on this map is compiled from various sources made available to us which we believe to be reliable.
N:\ArcGIS\CORE\COG\Prioritization\Report\BF_EP.mxd
11/17/2020



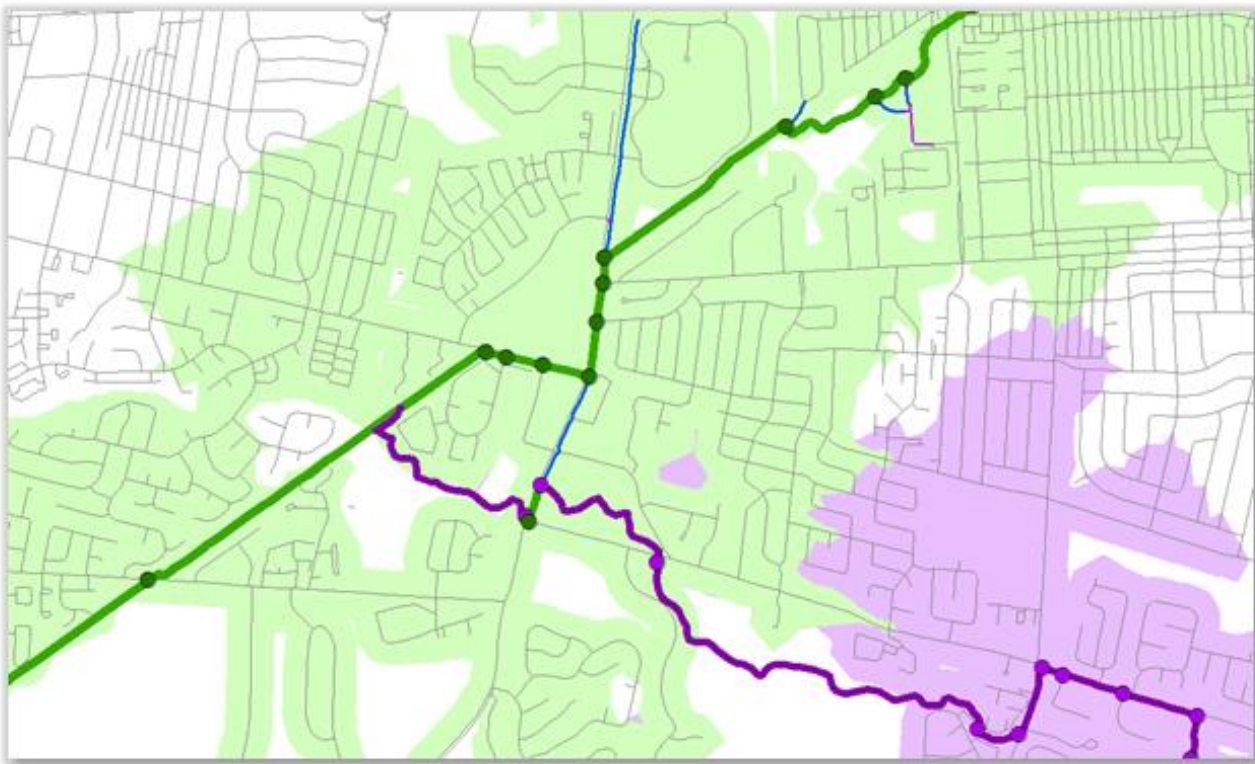
Create Network

- Roads (minus limited access)
- Multi-Use Paths (MUP)
- Connections between road and MUP
- Identify access points to COG Trail



Code Network

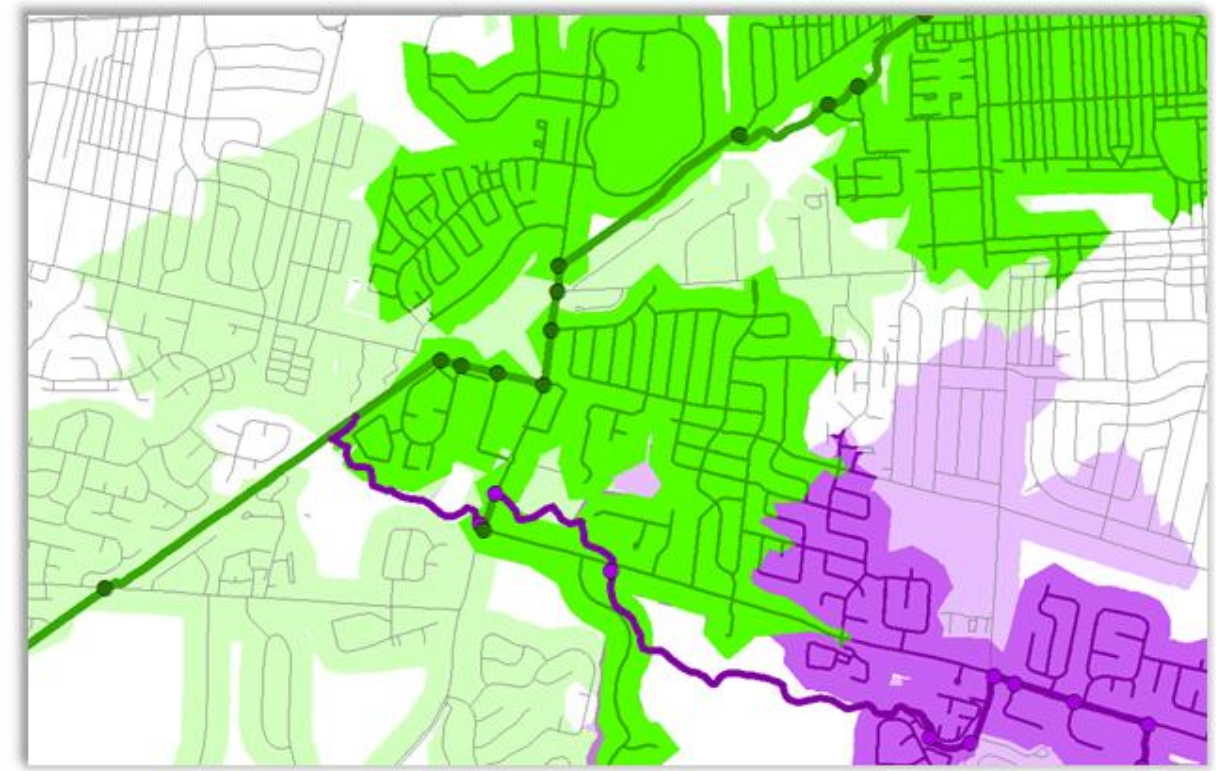
- On-Road Bike Friendliness
 - On-Road Bike Facilities
 - Presence of Sidewalks



All Roads Network

- Access within 1 Mile to Existing and Proposed Trail

The COG trail was not included as part of the network. Only the access points



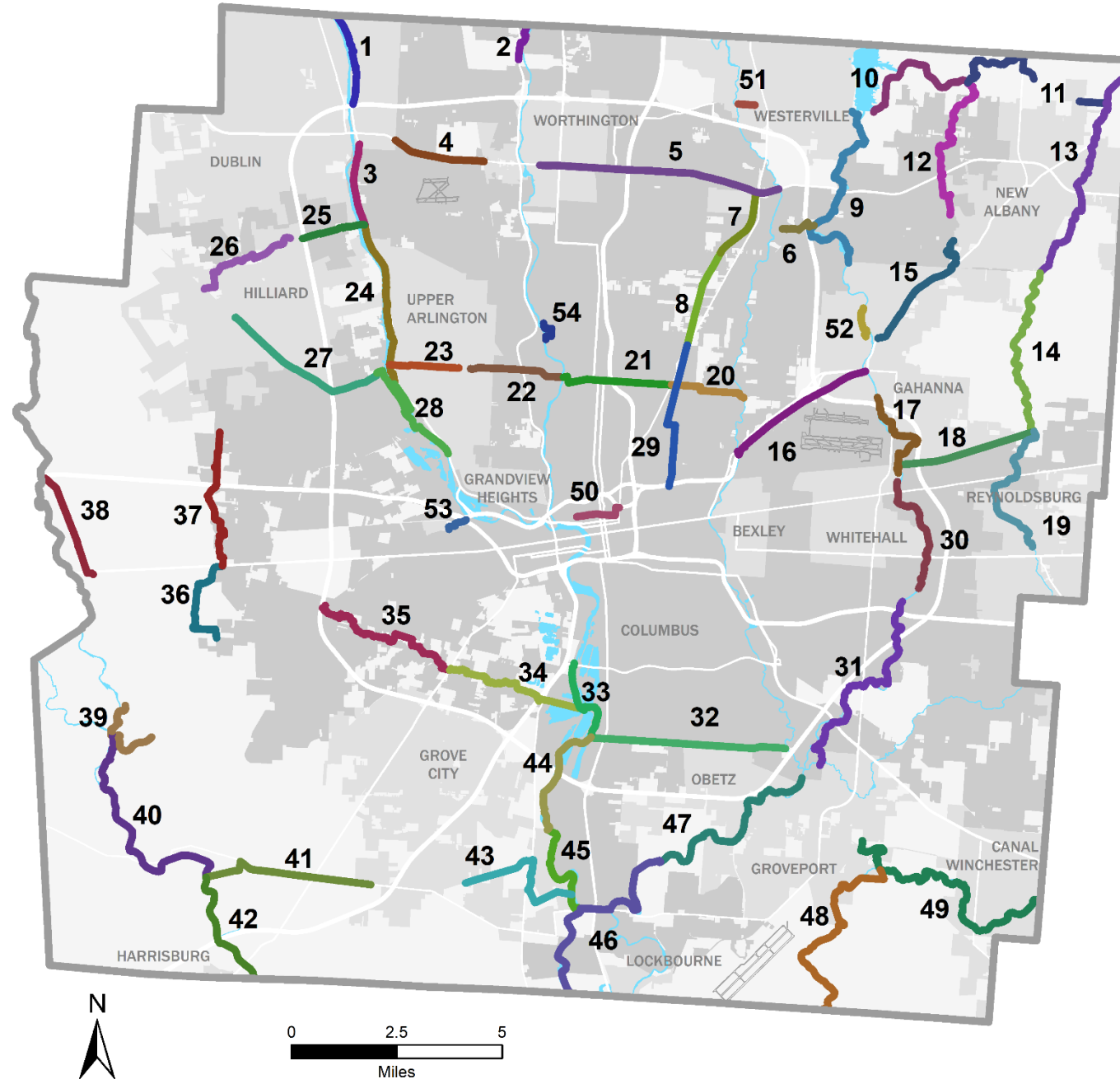
Bike Friendly Network

- Access within 1 Mile to Existing and Proposed using only Bike Friendly roads and MUP

54 Segments

Ranked based on
potential impact on

Social Equity
Public Health
Environment
&
Economy



Proposed Trail Segmentation Franklin County, Ohio

- Proposed Corridor
- River/Water



Ohio
Location
Map



The information shown on this map is compiled from various sources made available to us which we believe to be reliable.
N:\ArcGIS\CORE\COG\Prioritization\Report\Corridors.mxd
10/13/2020

Trail Segment Ranking Criteria

Prioritization

Connectivity

Low stress roads

Existing Trails

Existing Access Points

Proposed Access Points

Bus Stops

Barriers

Health/Environment

Acres of Parks

Miles of Riparian Corridor

Number of Crashes

Equity

Poverty

Unemployment

Race

Disability

Population

Zero Car Households

Economy

Jobs

Education Facilities

Cultural Amenities



MORPC

Equity: Poverty

* This measure represents the percent of block groups with an above average poverty rate that intersect the proposed trail.
 * This measure is standardized by dividing block groups with above average poverty levels by the total number of block groups a proposed segment intersects.
 * COG trails that intersect a higher percent of block groups with above average poverty levels have priority.
 * This measure was created using ACS 5-year estimates for 2014-2018 at the block group level.

```
```{r, echo = FALSE, fig.align = "center"}
variable <- COGcorridors %>%
 dplyr::select(PCORRid, Equity_Poverty) %>%
 mutate(Equity_Poverty = Equity_Poverty) %>%
 arrange(Equity_Poverty)

mycols <- c("1" = "#00B2BF",
 "2" = "#2A7F67",
 "3" = "#5AB65F",
 "4" = "#0075BF",
 "5" = "#737B82")

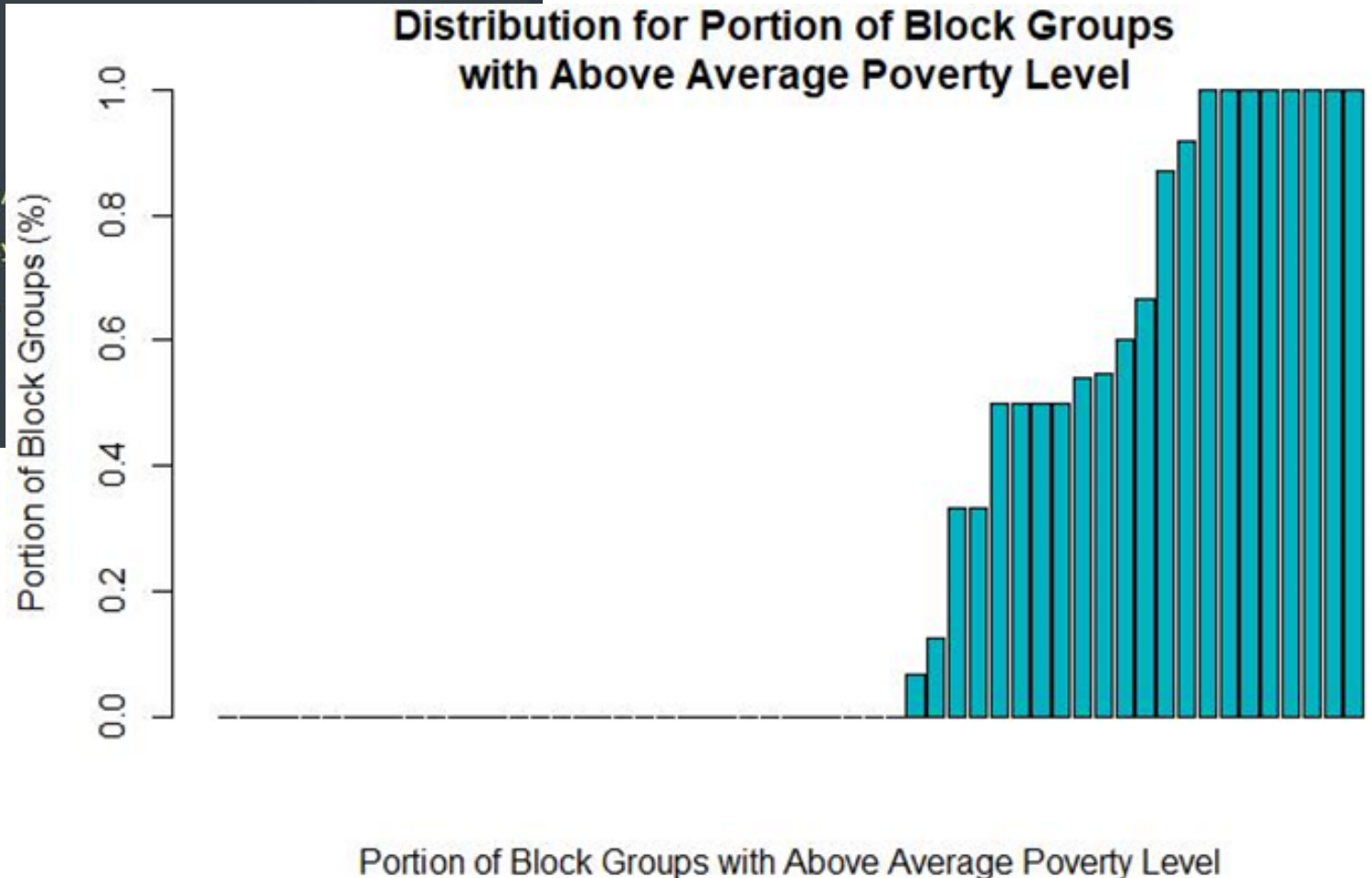
main <- "Distribution for Portion of Block Groups \n with Above Average Poverty Level"
xlab <- "Portion of Block Groups with Above Average Poverty Level"

barplot(variable$Equity_Poverty, main = main, xlab = xlab,
 ylim=c(0,1), family = "Arial", col = "#00B2BF")

final_scores <- final_scores %>%
 left_join(variable, by = "PCORRid")
```
```

Process Criteria

- Spatial Analysis in GIS
- R script ran criteria through evaluation

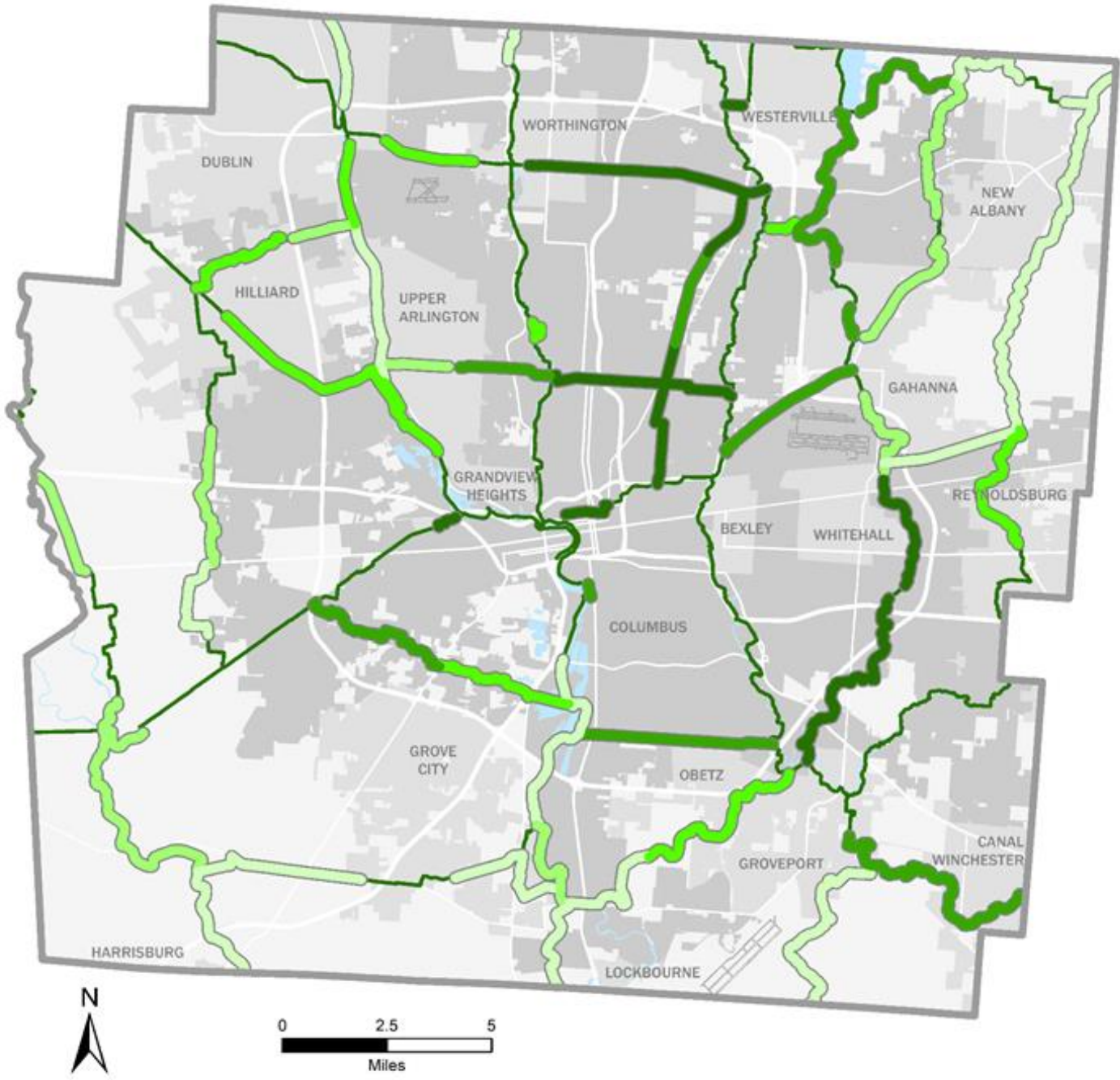


Data was normalized
 Criteria weighted equally

Ranked Trail Corridors

All criteria
equally weighted

Prioritization



Ranking of Proposed COG Trail Corridors Franklin County, Ohio

- Highest
-
-
- Lowest
- Existing Trail

Source: MORPC



The information shown on this map is compiled from various sources made available to us which we believe to be reliable.
N:\ArcGIS\CORE\COG\Prioritization\Report\Rank_Segs2.mxd
11/17/2020

Central Ohio Greenways' Regional Trail Vision Prioritization

Franklin County, Ohio

Regional Trails

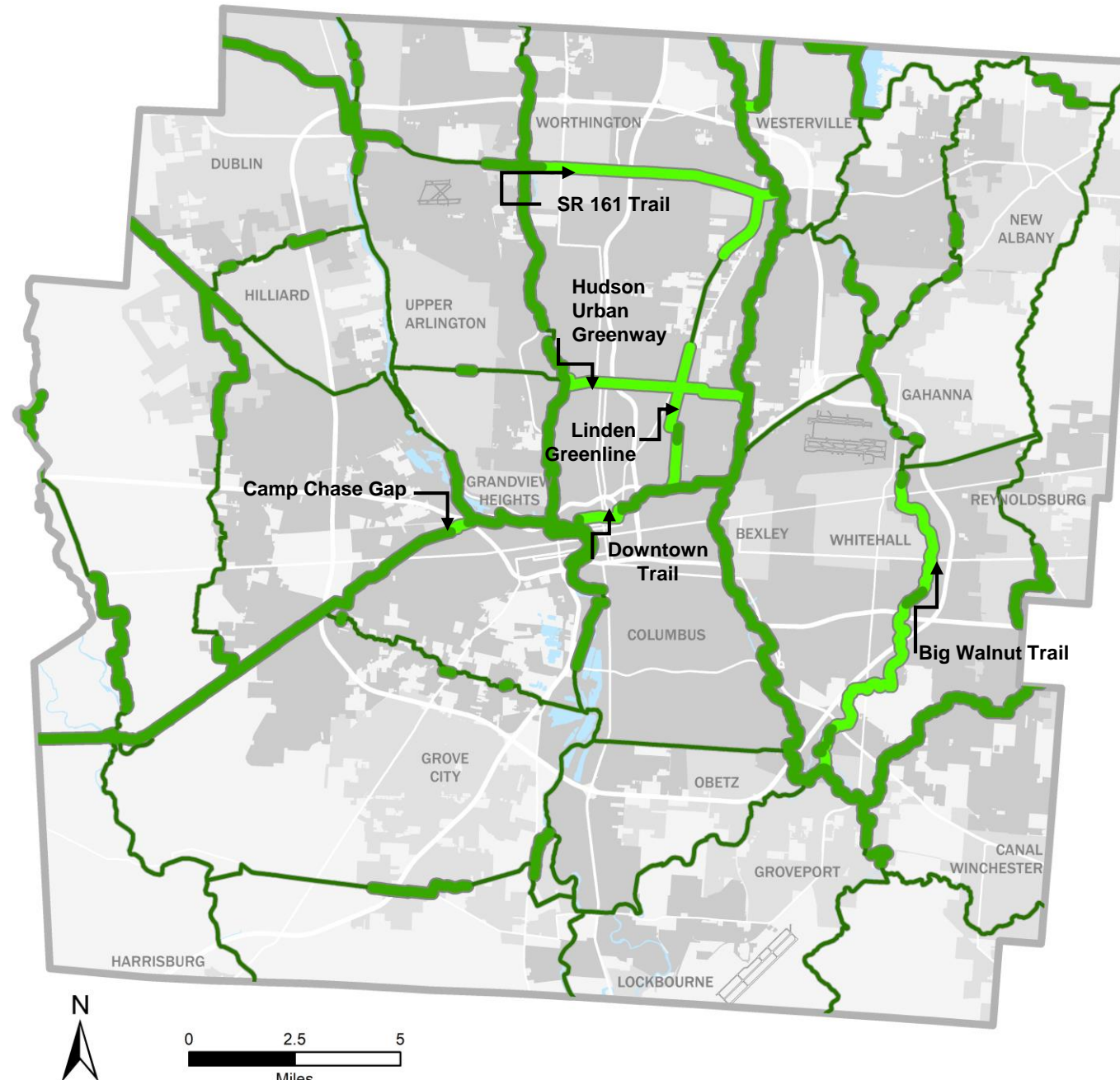
- Existing
- High Impact Proposed
- Other Proposed

Source: MORPC



The information shown on this map is compiled from various sources made available to us which we believe to be reliable.
N:\ArcGIS\CORE\COG\Prioritization\Report\Top10.mxd
12/7/2020

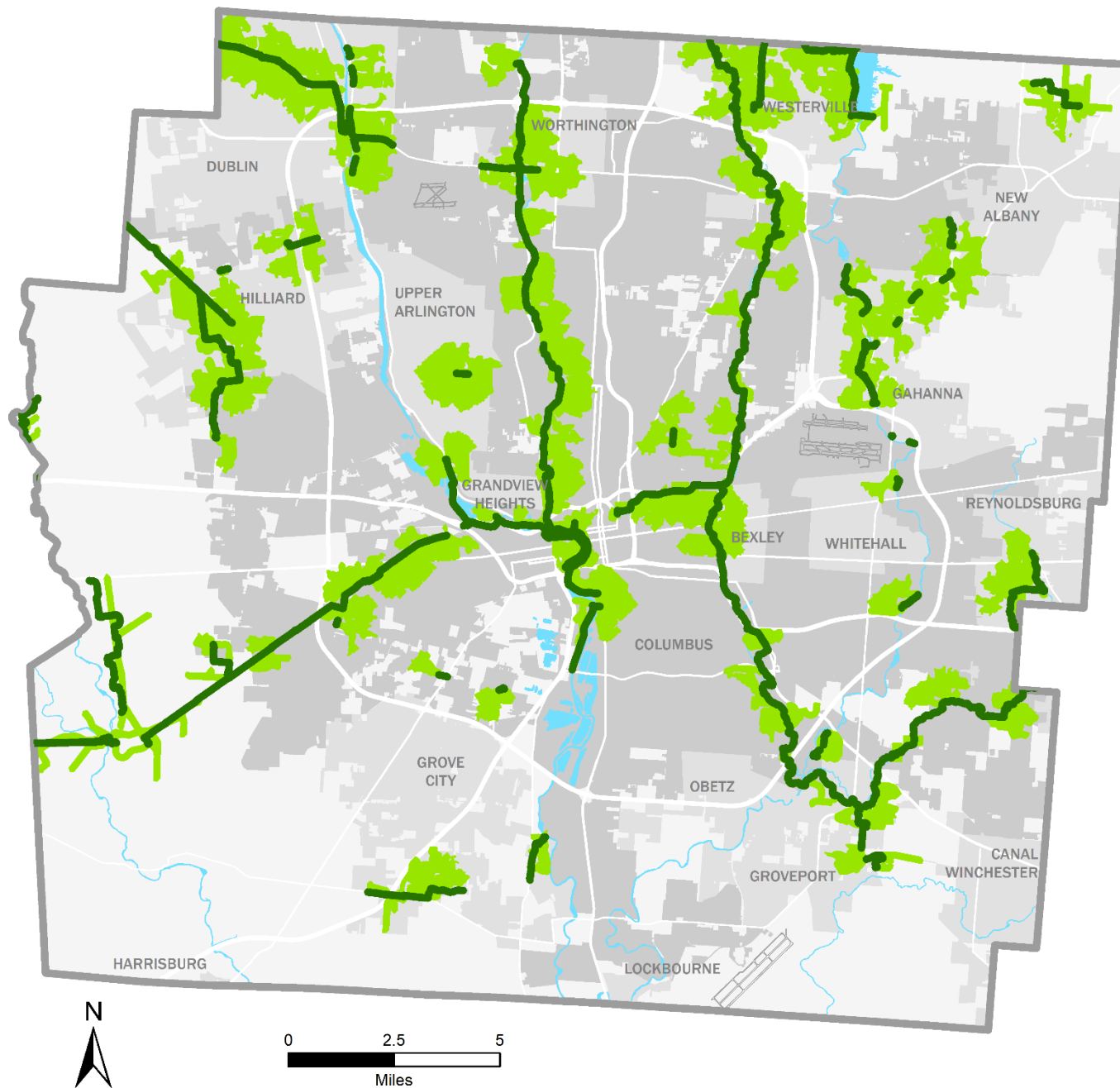
Top 10 Ranked Trail Corridors



120 Miles
Existing Trail

27%
Population
Can bike to a trail
from home

Bike to a trail from
28% of Jobs



Bike Friendly
Access within
1 Mile of
Existing Trail
Franklin County, Ohio

- Existing Multi-Use Path
- Bike Friendly Access to Existing Trail
- River/Water



Ohio
Location
Map

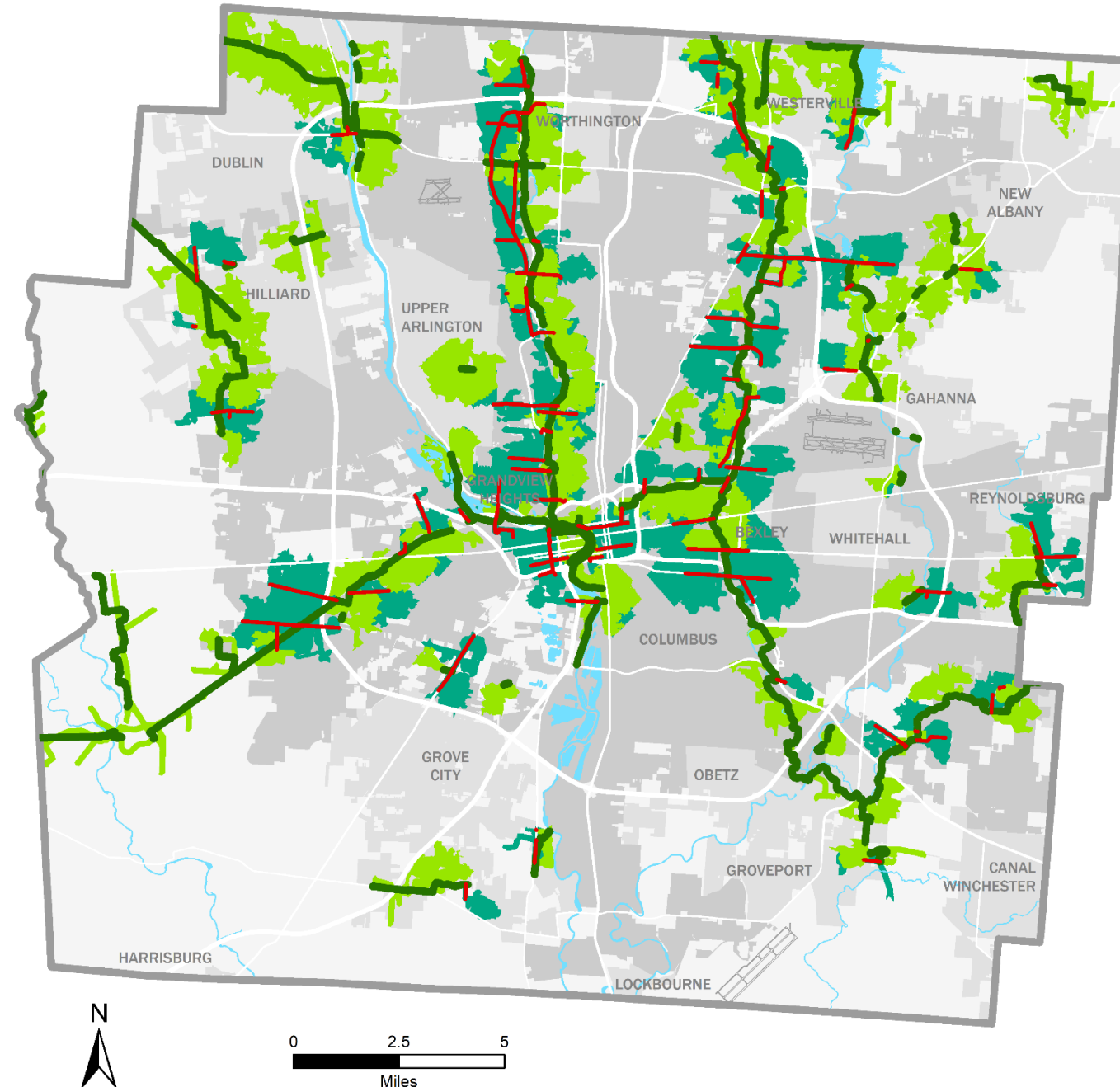


The information shown on this map is compiled from various sources made available to us which we believe to be reliable.
N:\ArcGIS\CORE\COG\Prioritization\Report\Bikefriend_E.mxd
10/13/2020

120 Miles
Existing Trail

50 Proposed
1st mile / last
mile connections

45%
Population
could bike to a trail
from home



Improving Access to Existing Trails Within 1 Mile Franklin County, Ohio

- Road Improvement
- Existing Multi-Use Path
- River/Water
- Existing Access to
- Improved Access to Trail

Simulation of expanded bike friendly access, with selected road facility improvements



The information shown on this map is compiled from various sources made available to us which we believe to be reliable.
N:\ArcGIS\CORE\COG\Prioritization\Report\FirstMile.mxd
10/13/2020

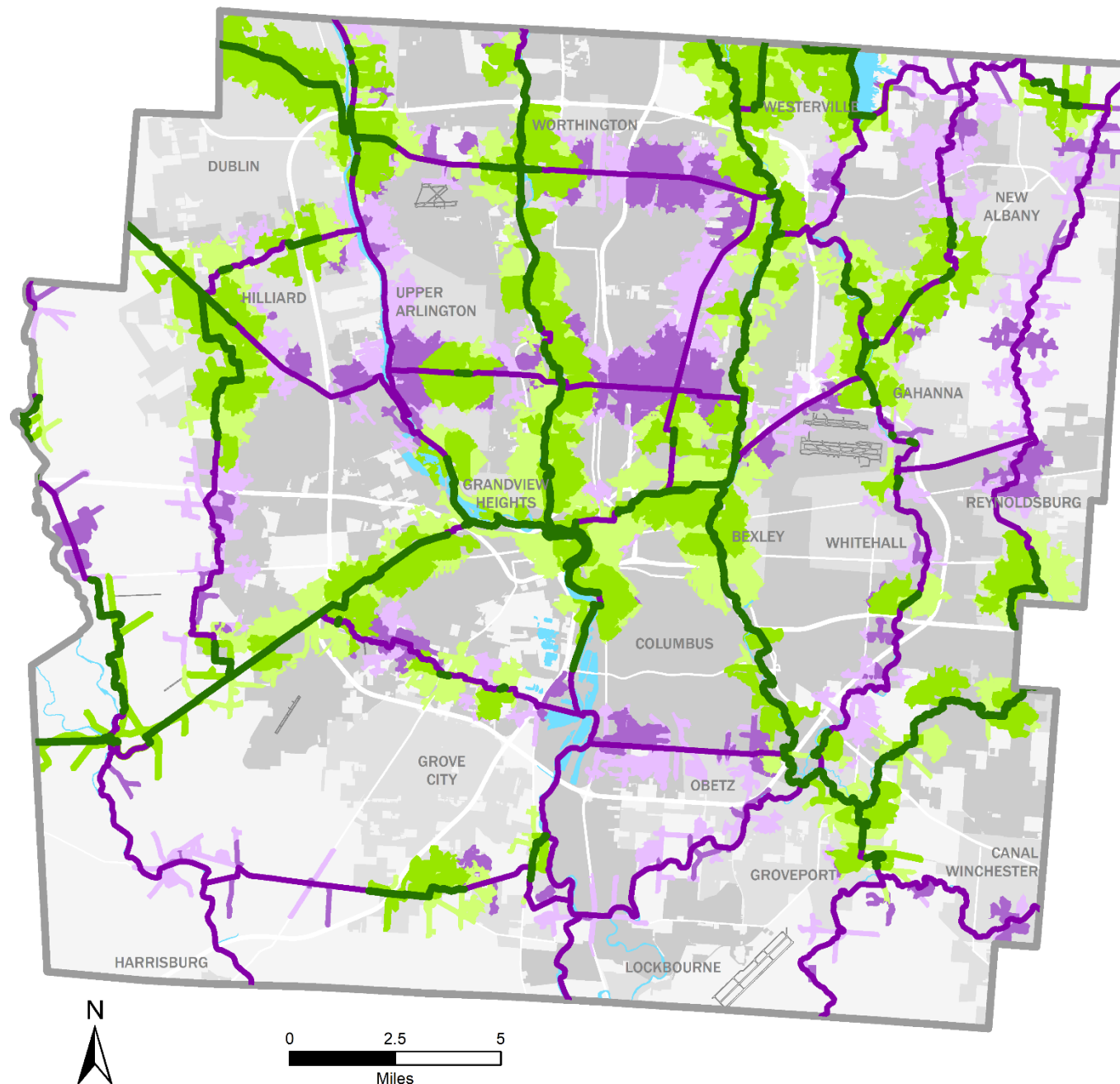
296 Miles

Existing and Proposed
Trail

59%

Population
could bike to a trail
from home

Bike to a trail from
62% of Jobs



Central Ohio Greenway Trail Access Within 1 Mile Franklin County, Ohio

- Existing Multi-Use Path
- Proposed Multi-Use Trail
- Bike Friendly Access to Existing Trail
- Access to Existing Trail
- Bike Friendly Access to Proposed Trail
- Access to Proposed Trail
- River/Water



Ohio
Location
Map



The information shown on this map is compiled from various sources made available to us which we believe to be reliable.
N:\ArcGIS\CORE\COG\Prioritization\Report\AllRoads.mxd
10/13/2020

120 Miles

Existing Trail

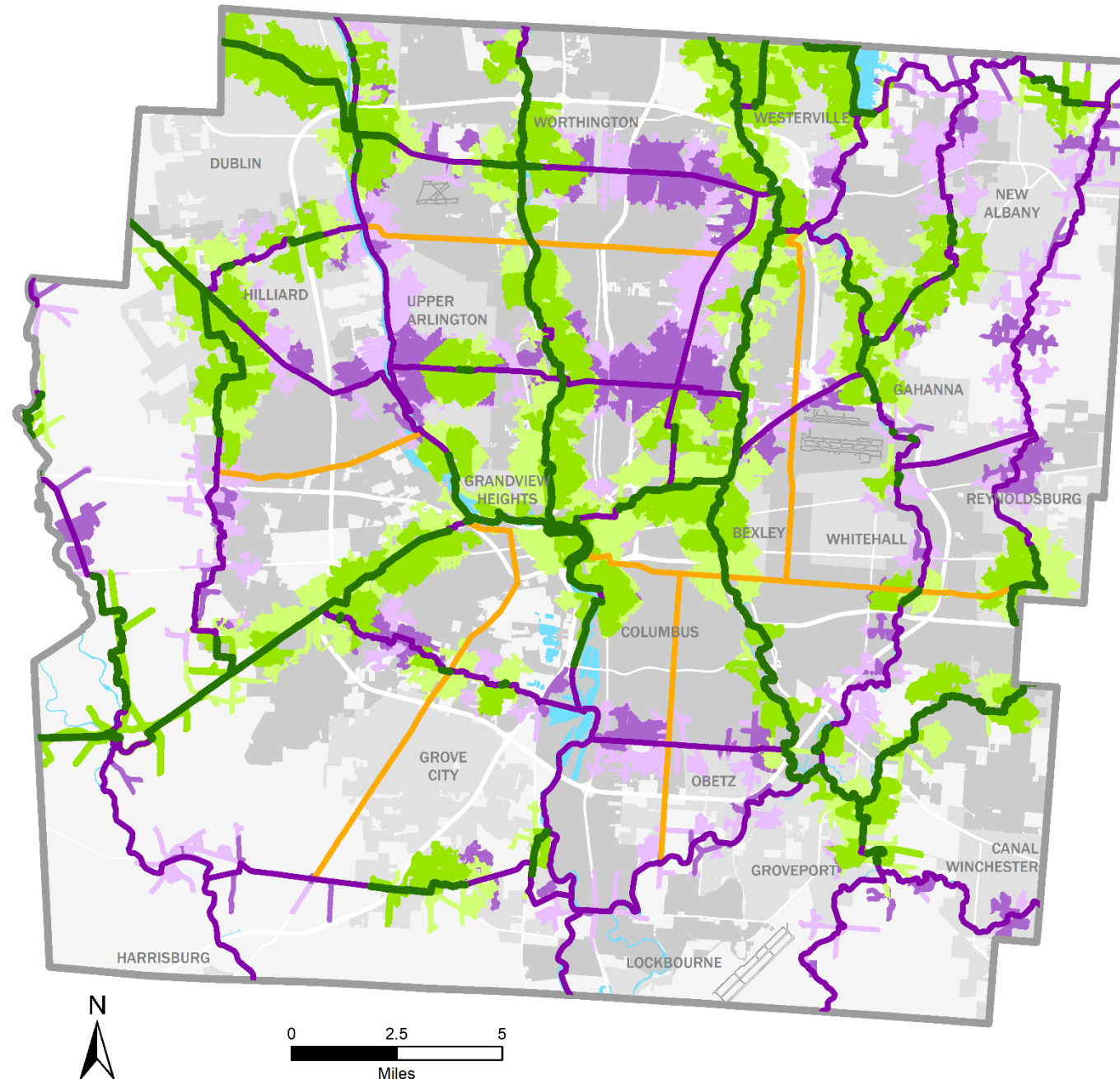
176 Miles

Proposed Trail

50 Miles

"Recommended Trail"

76% of
Population and
Jobs



Central Ohio Greenway Trails Access Within 1 Mile Franklin County, Ohio

- Existing Multi-Use Path
- Proposed Multi-Use Trail
- Recommended Trail
- Bike Friendly Access to Existing Trail
- Access to Existing Trail
- Bike Friendly Access to Proposed Trail
- Access to Proposed Trail
- River/Water



Ohio
Location
Map

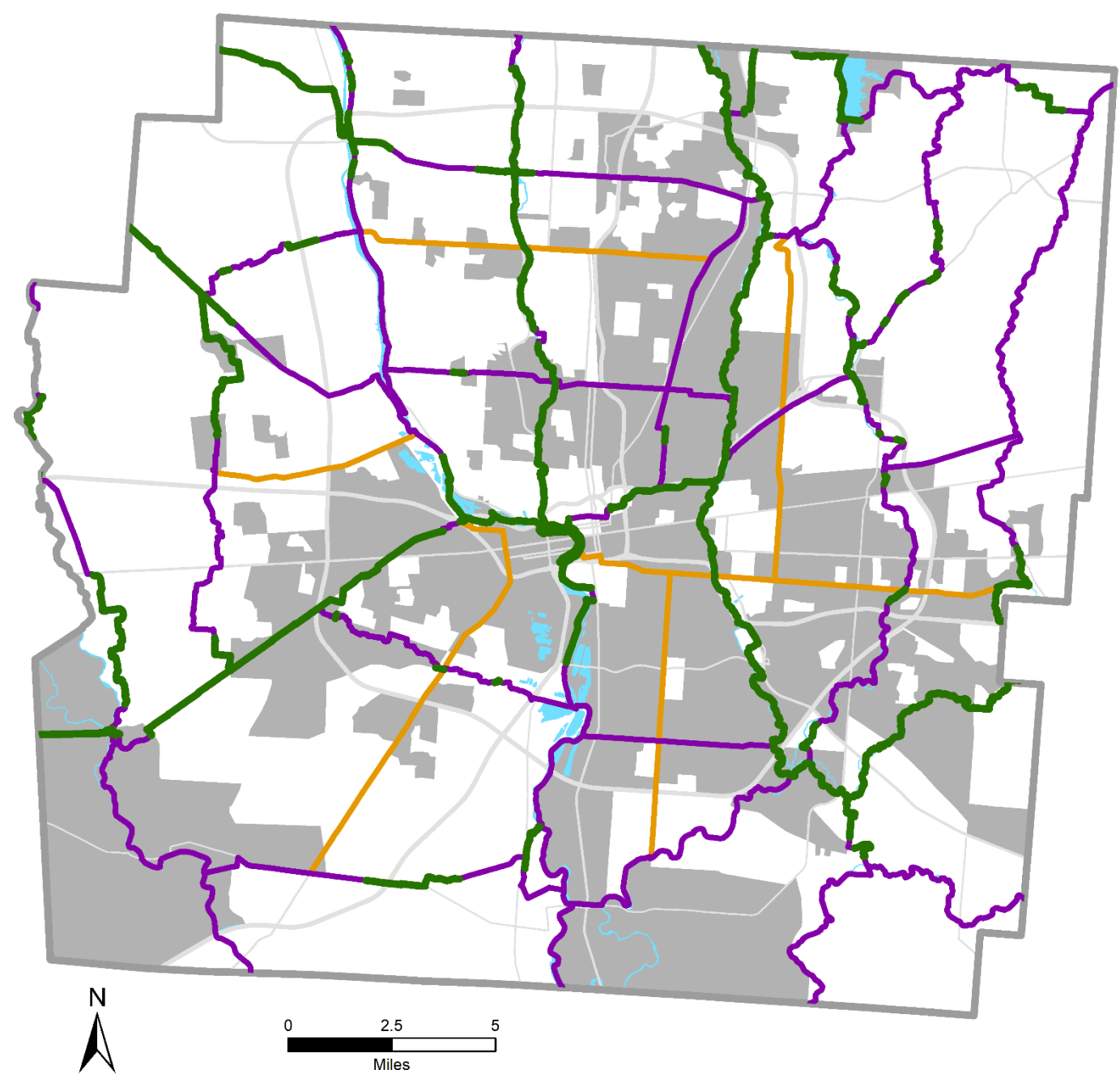


MORPC



The information shown on this map is compiled from various sources made available to us which we believe to be reliable.
N:\ArcGIS\CORE\COG\Prioritization\Report\AllTrailswBuf.mxd
10/13/2020

466
Neighborhoods
experiencing
high rates of poverty



Neighborhoods
with Above
Average Poverty
Franklin County, Ohio

- Existing Multi-Use Path
- Proposed Multi-Use Trail
- Recommended Trail
- Above Average Poverty

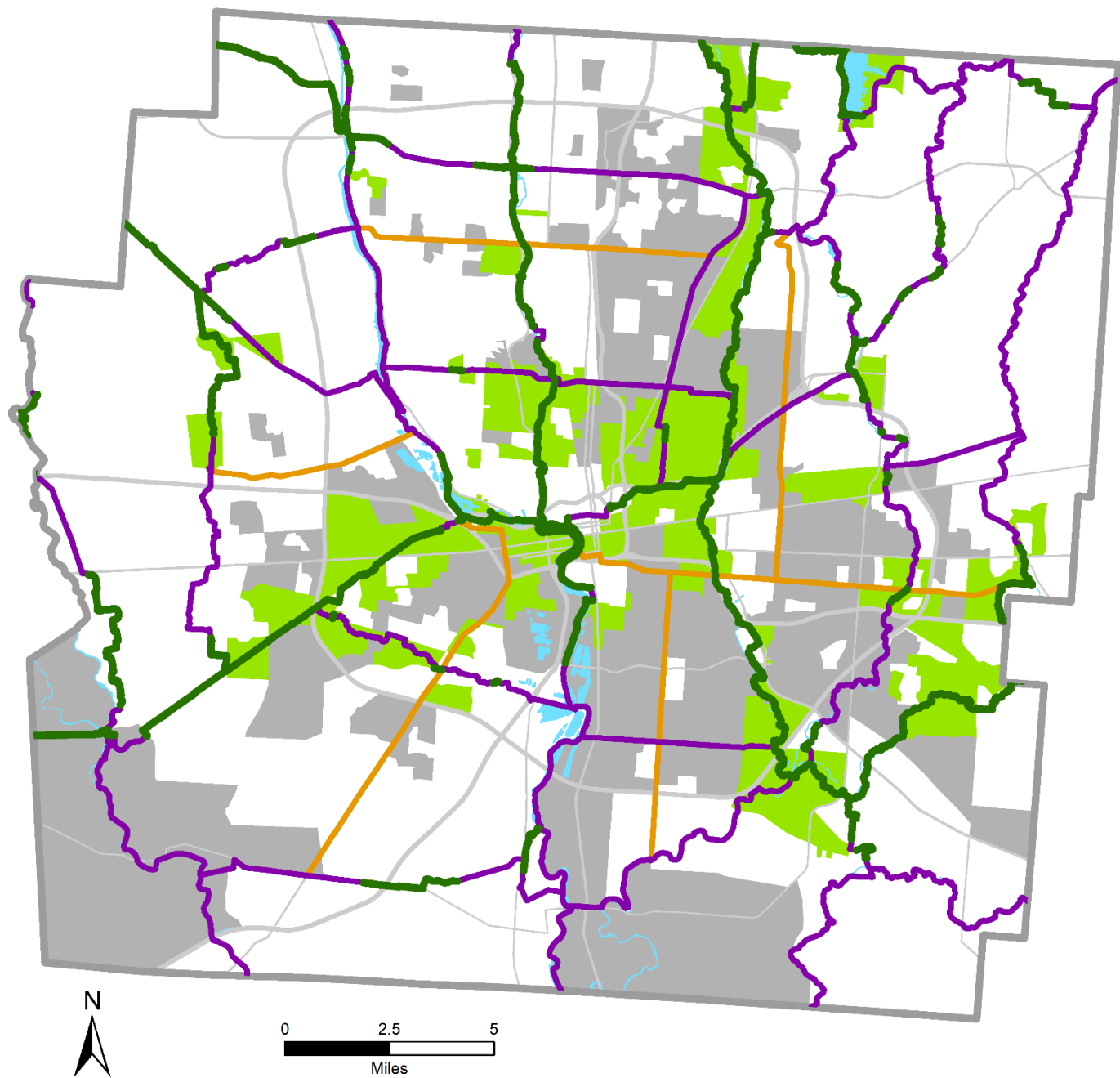
Source: Census ACS 2014-18,
200% Poverty



The information shown on this map is compiled from various sources made available to us which we believe to be reliable.
N:\ArcGIS\CORE\COG\Prioritization\Report\Poverty200_1.mxd
10/13/2020

466
Neighborhoods
experiencing
high rates of poverty

40% of those
high poverty
Neighborhoods
are served
by current trails



Neighborhoods
with Above
Average Poverty
with Access to
Existing Trails
Franklin County, Ohio

- Existing Multi-Use Path
- Proposed Multi-Use Trail
- Recommended Trail
- Above Average Poverty**
- Access to Existing Trail
- No Access to

Source: Census ACS 2014-18,
200% Poverty



The information shown on this map is compiled from various sources made available to us which we believe to be reliable.
N:\ArcGIS\CORE\COG\Prioritization\Report\Poverty200_2.mxd
10/13/2020

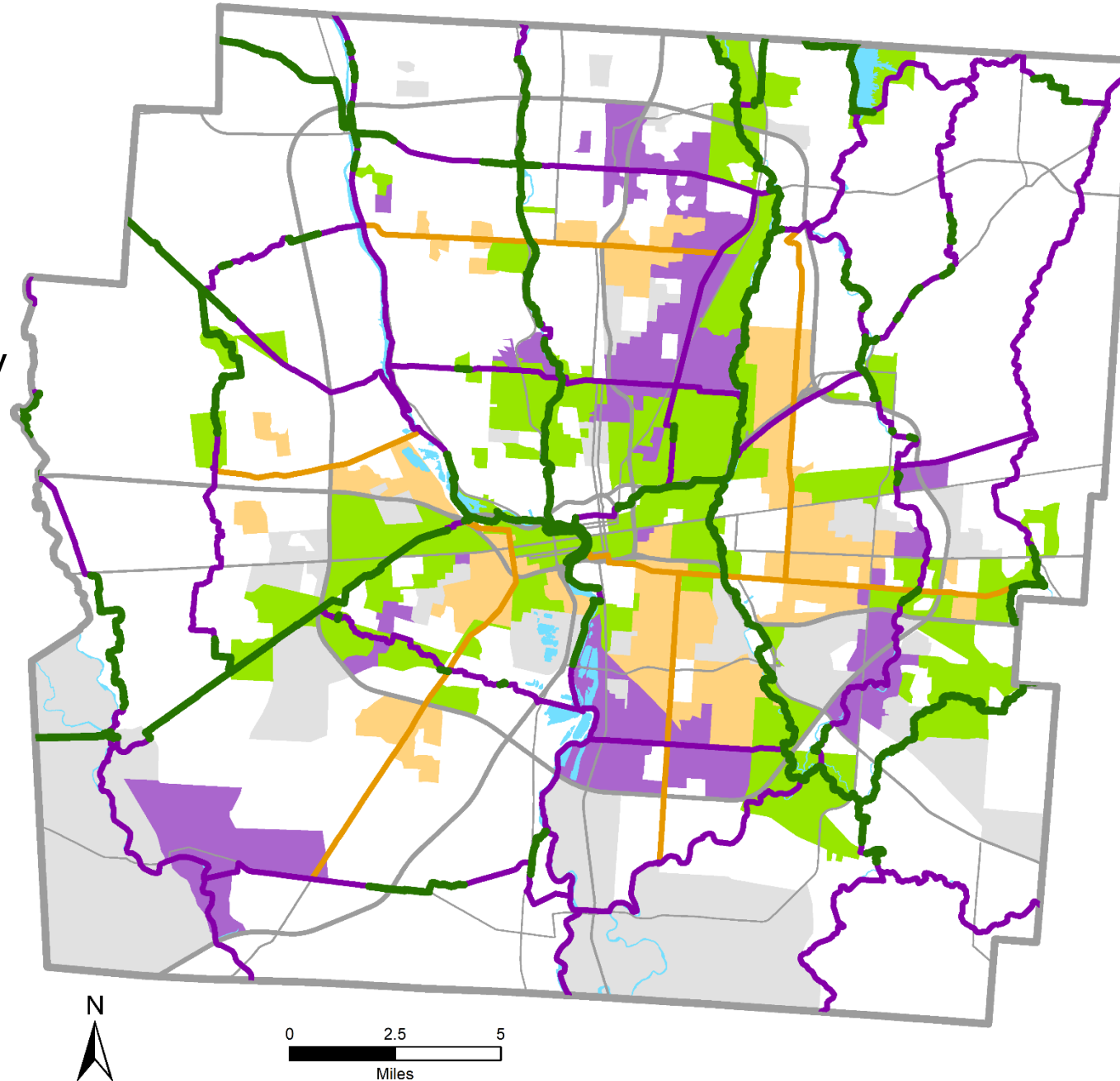
466

Neighborhoods
experiencing high rates of
poverty

59% of the high poverty
Neighborhoods
will be served by existing
and proposed trails

85% of the
high poverty

Neighborhoods
could be served by
existing, proposed, and
“recommended” trails



Trail Access for Neighborhoods with Above Average Poverty Franklin County, Ohio

- Existing Multi-Use Path
- Proposed Multi-Use Trail
- Recommended Trail
- Above Average Poverty**
- Access to Existing Trail
- Access to Proposed Trail
- Access to Recommended Trail
- No Trail

Source: Census ACS 2014-18,
200% Poverty



Ohio
Location
Map



MORPC



The information shown on this map is compiled from various sources made available to us which we believe to be reliable.
N:\ArcGIS\CORE\COG\Prioritization\Report\Poverty200.mxd
10/13/2020

THANK YOU!

Melinda Vonstein, AICP

Central Ohio Greenways Coordinator
Mid-Ohio Regional Planning Commission
Mvonstein@morpc.org



MID-OHIO REGIONAL
MORPC
PLANNING COMMISSION



Active Transportation Plan Update

Jen Noll, MORPC



MORPC
MID-OHIO REGIONAL PLANNING COMMISSION



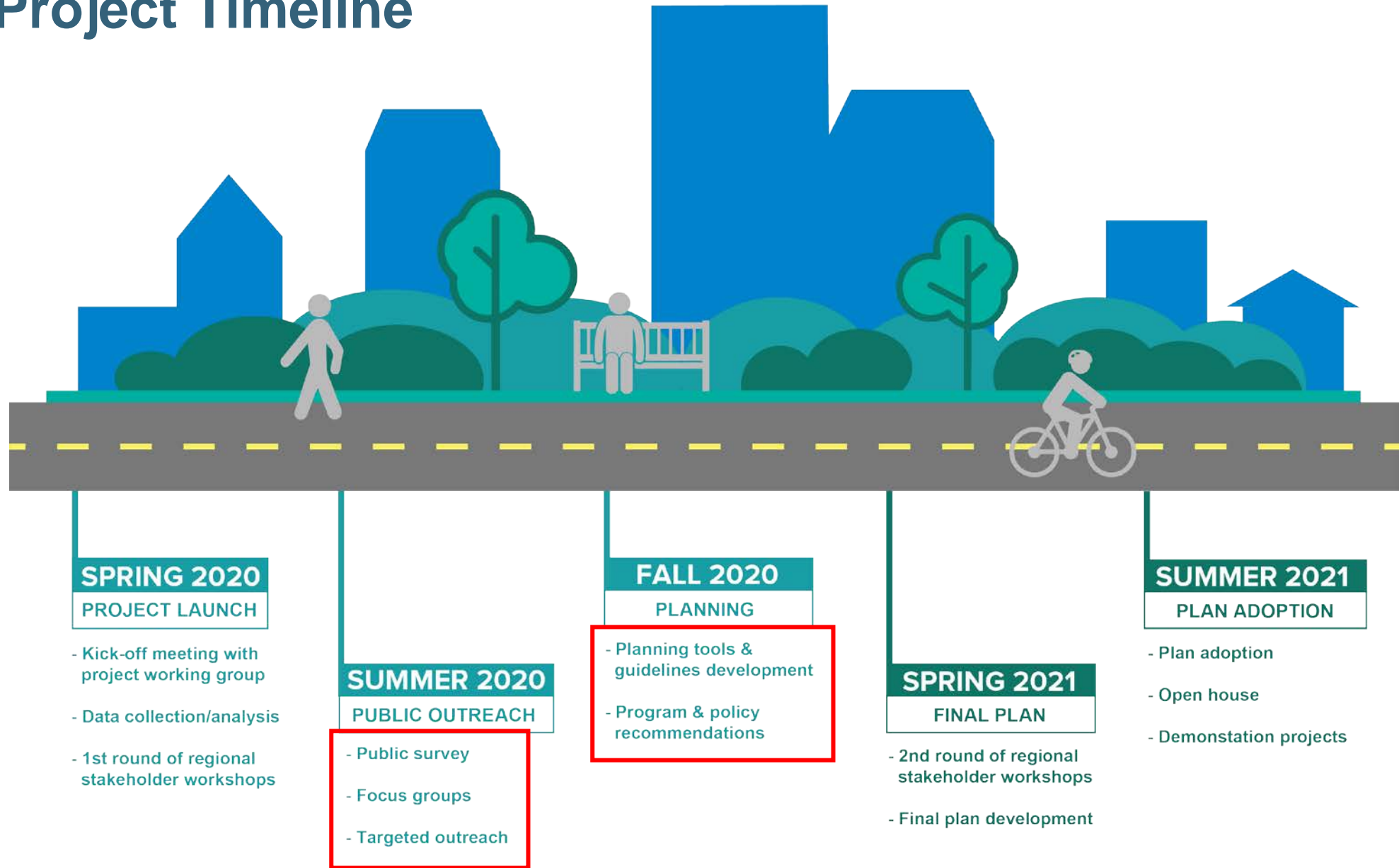
Statewide Bike and Pedestrian Plan

TAKE OUR SURVEY

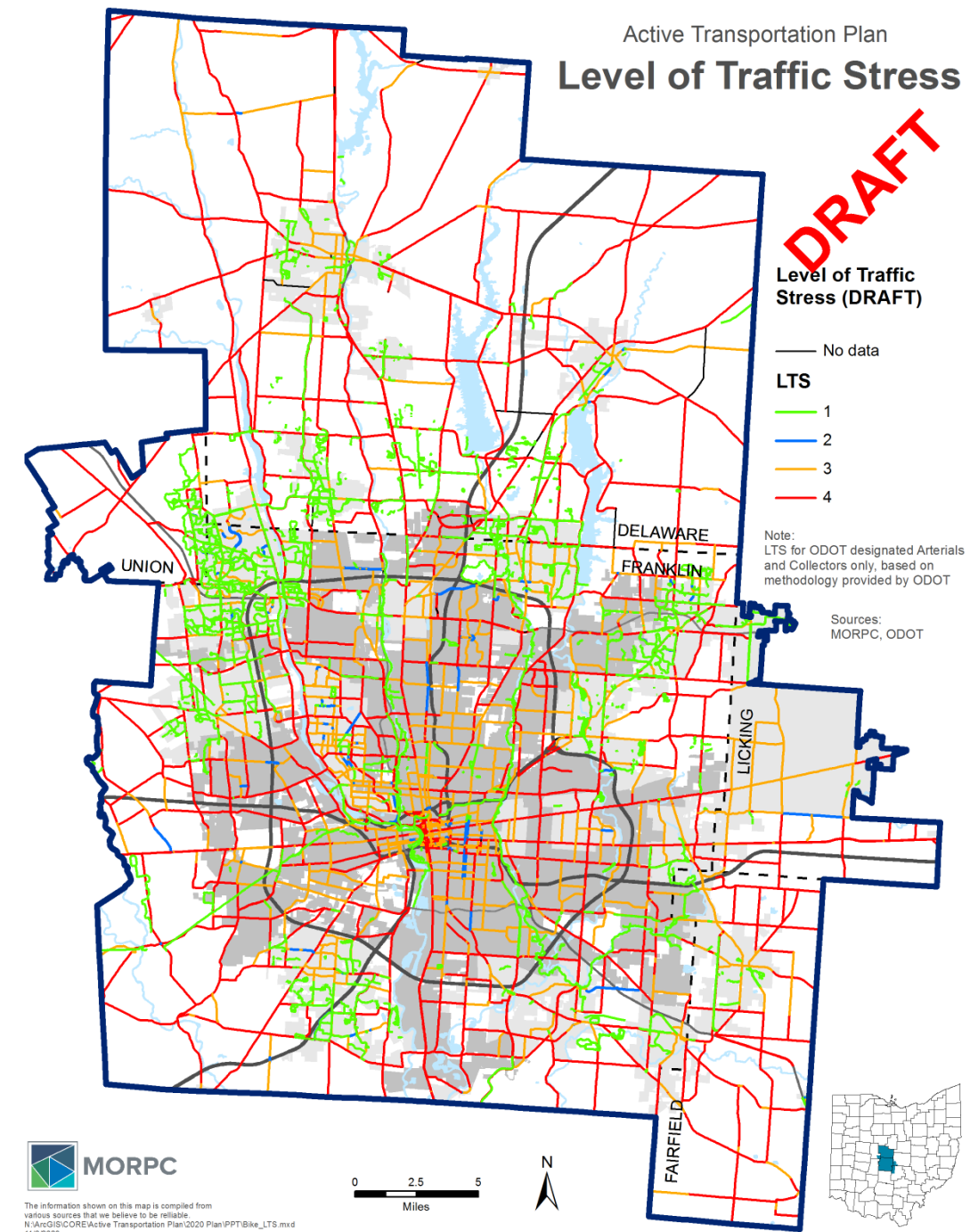
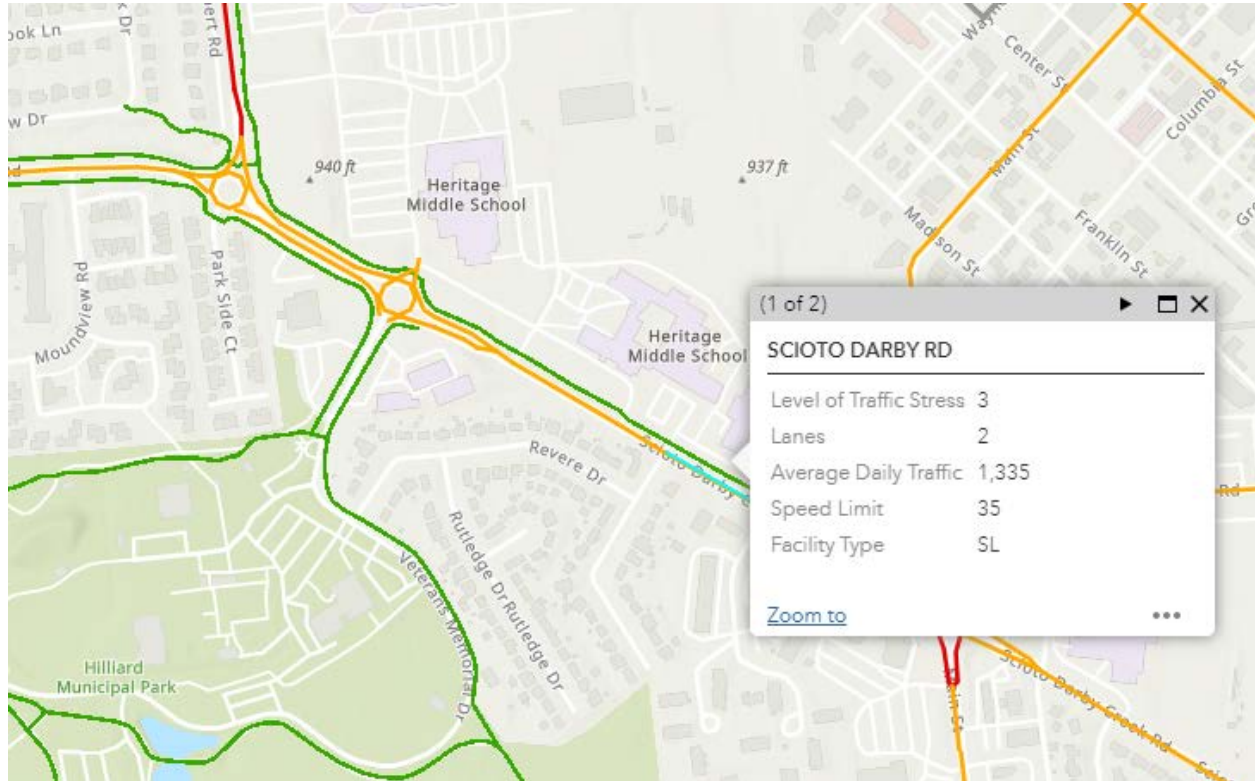
PublicInput.com/Walk.Bike.Ohio

Transportation.Ohio.gov/WalkBike

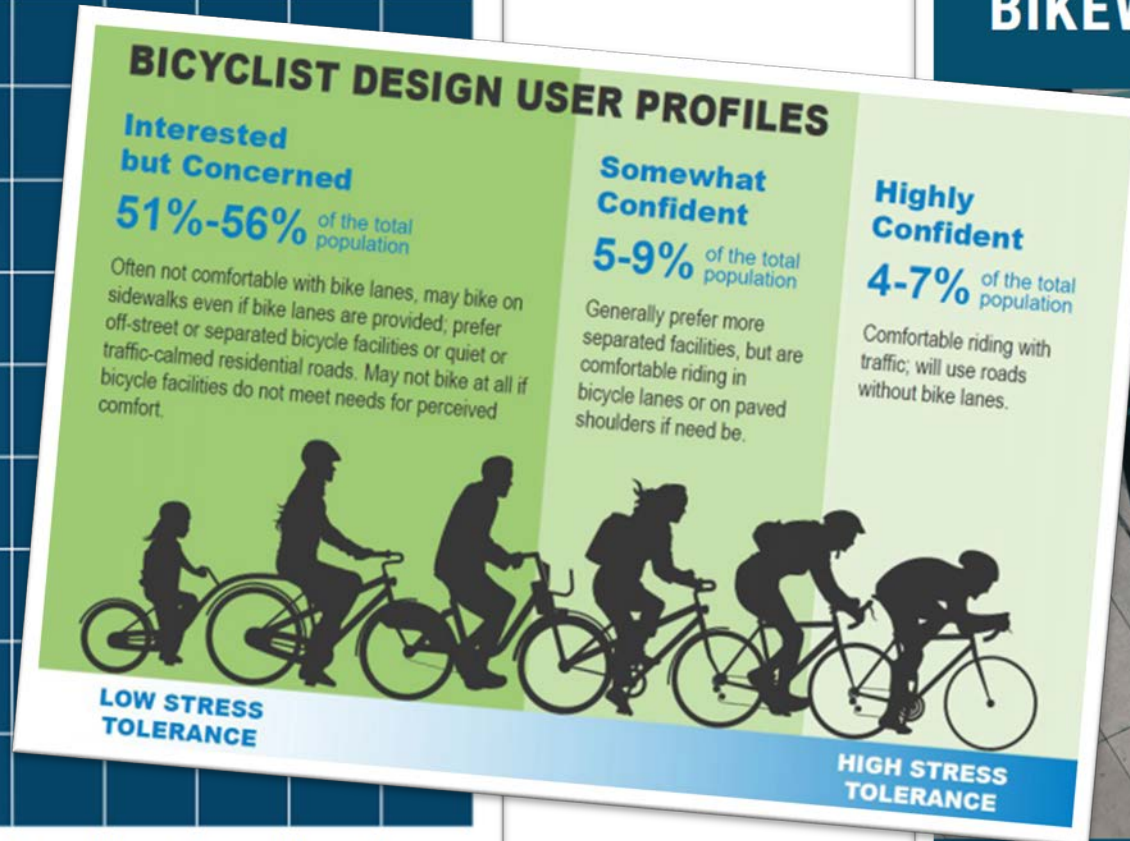
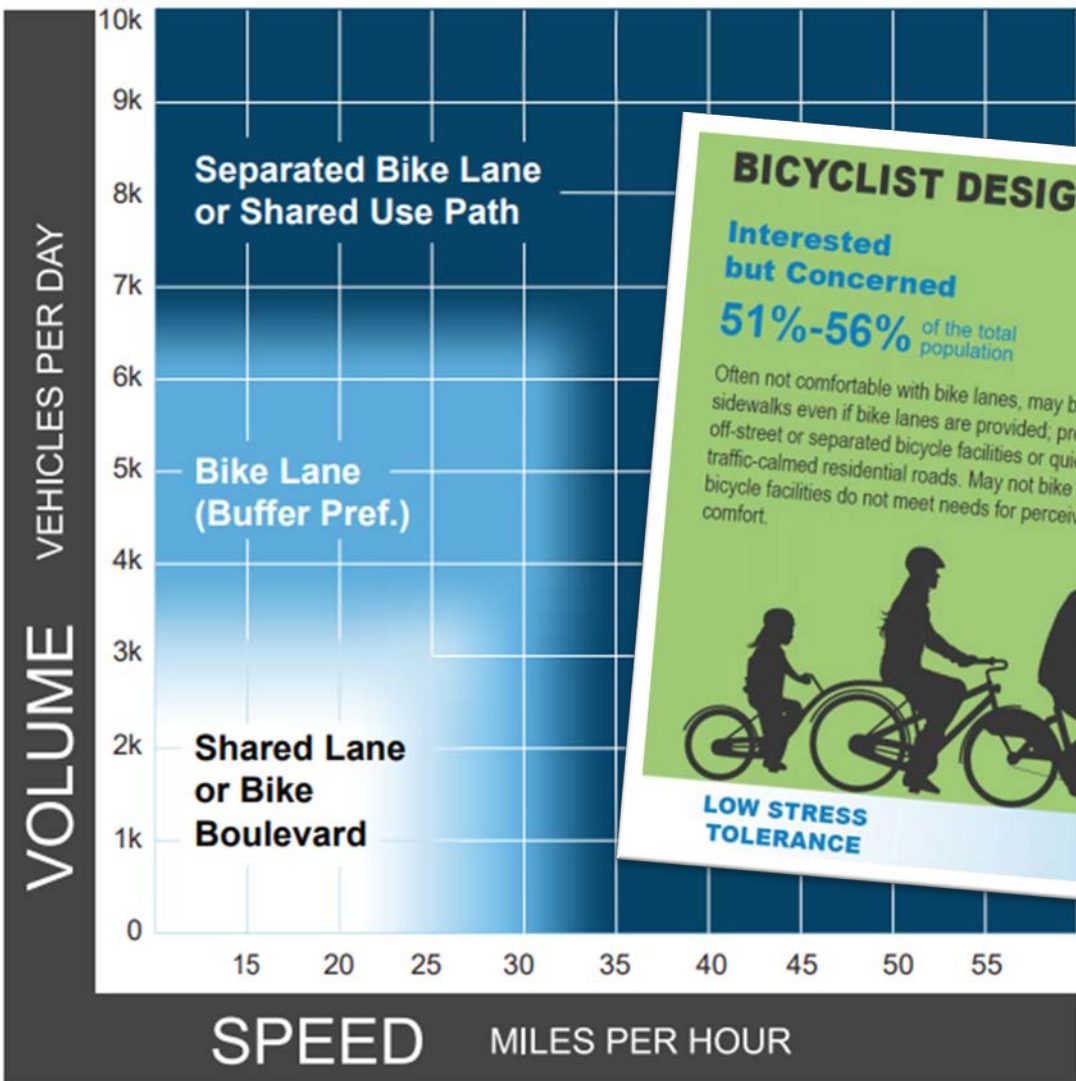
ATP Project Timeline



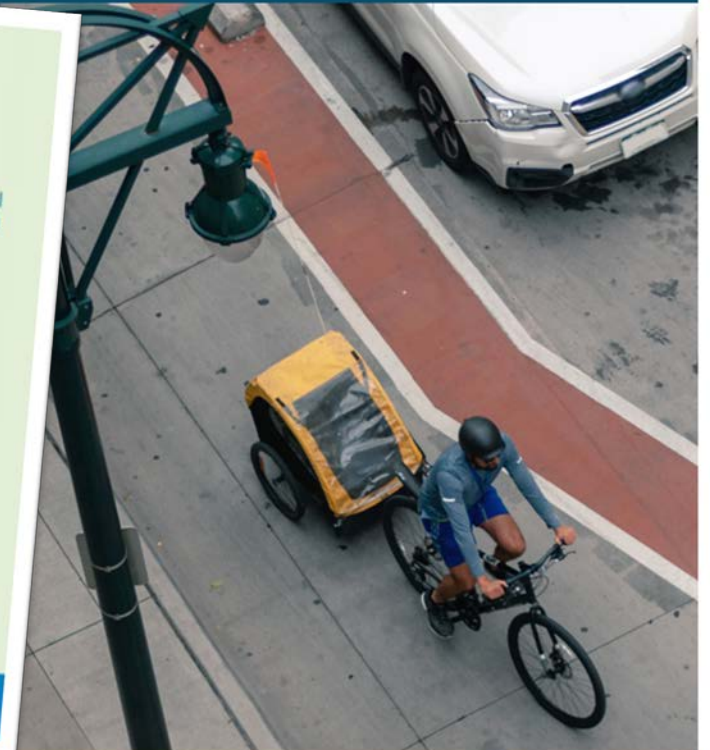
Bicycle Level of Traffic Stress (LTS)



FHWA Bikeway Selection Guide



BIKEWAY SELECTION GUIDE



U.S. Department of Transportation
Federal Highway Administration

FEBRUARY 2019

ATP Recommendations

- Steering Committee Guidance
 - Developing initial recommendations based on input from stakeholders
- Stakeholder Workshop
 - Discuss draft recommendations and priorities

www.pollEV.com/laurenc265



MORPC
MID-OHIO REGIONAL PLANNING COMMISSION

Active Transportation Committee

Lauren Cardoni, MORPC

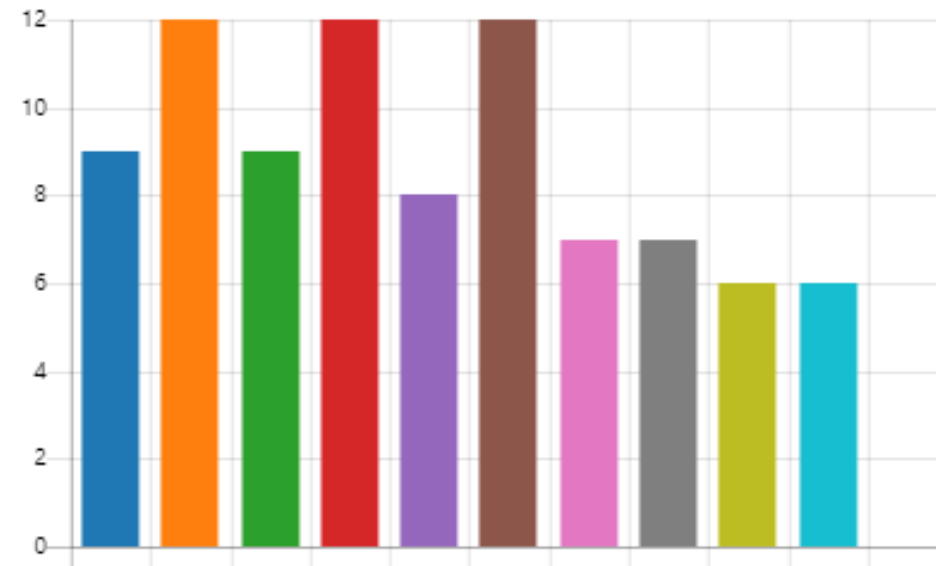
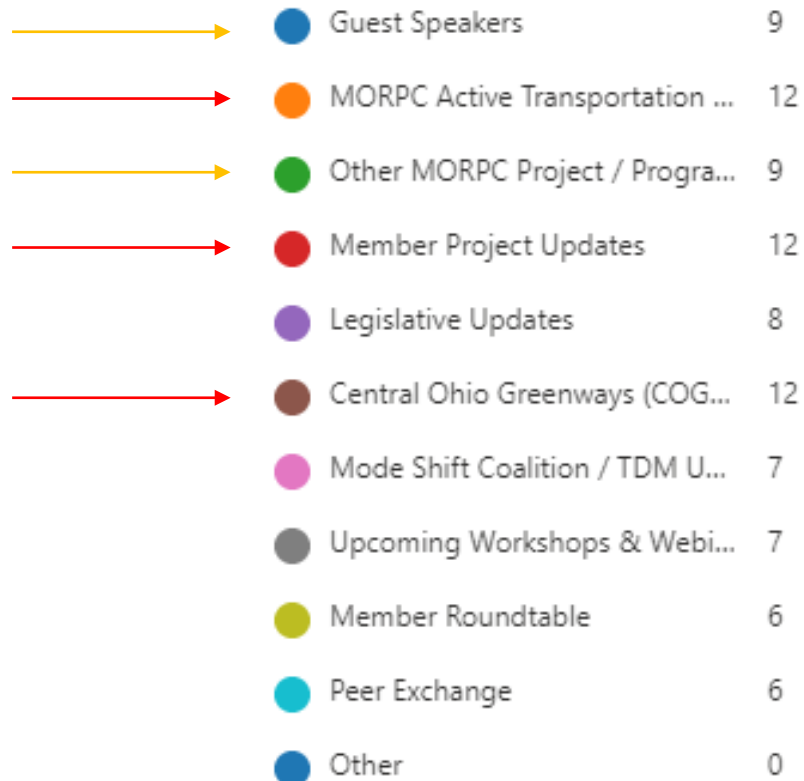


MID-OHIO REGIONAL
MORPC
PLANNING COMMISSION

ATC Meeting Content

Which of the following agenda items would you like to continue seeing (or add) as part of the quarterly ATC meeting agendas?




[More Details](#)

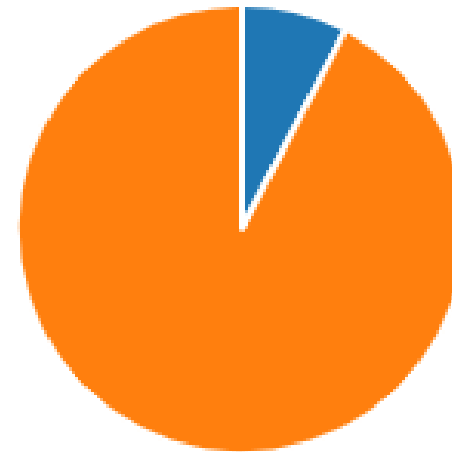


ATC Meeting Content

When we are able to return to in-person meetings, would you prefer to meet again in person or continue to meet virtually?

[More Details](#)

| | |
|---|----|
|  I prefer in-person meetings | 1 |
|  A combination of virtual and i... | 12 |
|  I prefer virtual meetings | 0 |



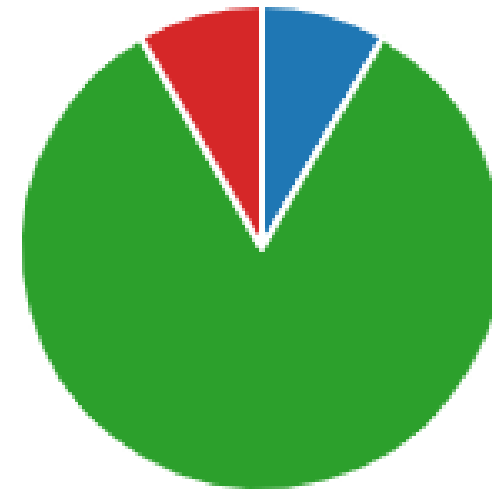
MORPC-Attributable Funding

Have you/has your agency previously applied for MORPC-Attributable Funds for a **STANDALONE bike/ped project?**

[More Details](#)

[Insights](#)

| | |
|--------------------------------------|----|
| ● Yes, and our project received f... | 1 |
| ● Yes, but we did not receive fu... | 0 |
| ● No, we have not applied for a ... | 10 |
| ● Other | 1 |



MORPC-Attributable Funding '20-21 Timeline



MORPC

- ~~March~~: MORPC adopts Policies
- ~~June 3~~: MORPC hosts applicant workshop, 2:30
- ~~July 10~~: Commitment Update Form due
- ~~July 17~~: Screening Applications for new funding due
- ~~Early August~~: Staff completes review of Updates. Provide feedback to applicants and revised forecast of available funding
- ~~October 9~~: Final Applications due
- ~~November 4~~: Ad-interim AFC members change
- **October - January**: Staff review and score applications & AFC review and recommends funding commitments
 - January 20: Attributable Funds Committee meeting to discuss scores and project funding
- **February 2021**: Draft list of funding commitments available for public review and comment
 - February 3: Attributable Funds Committee meeting to finalize draft funding proposal
- **May 2021**: MORPC Adopts list of attributable funding commitments

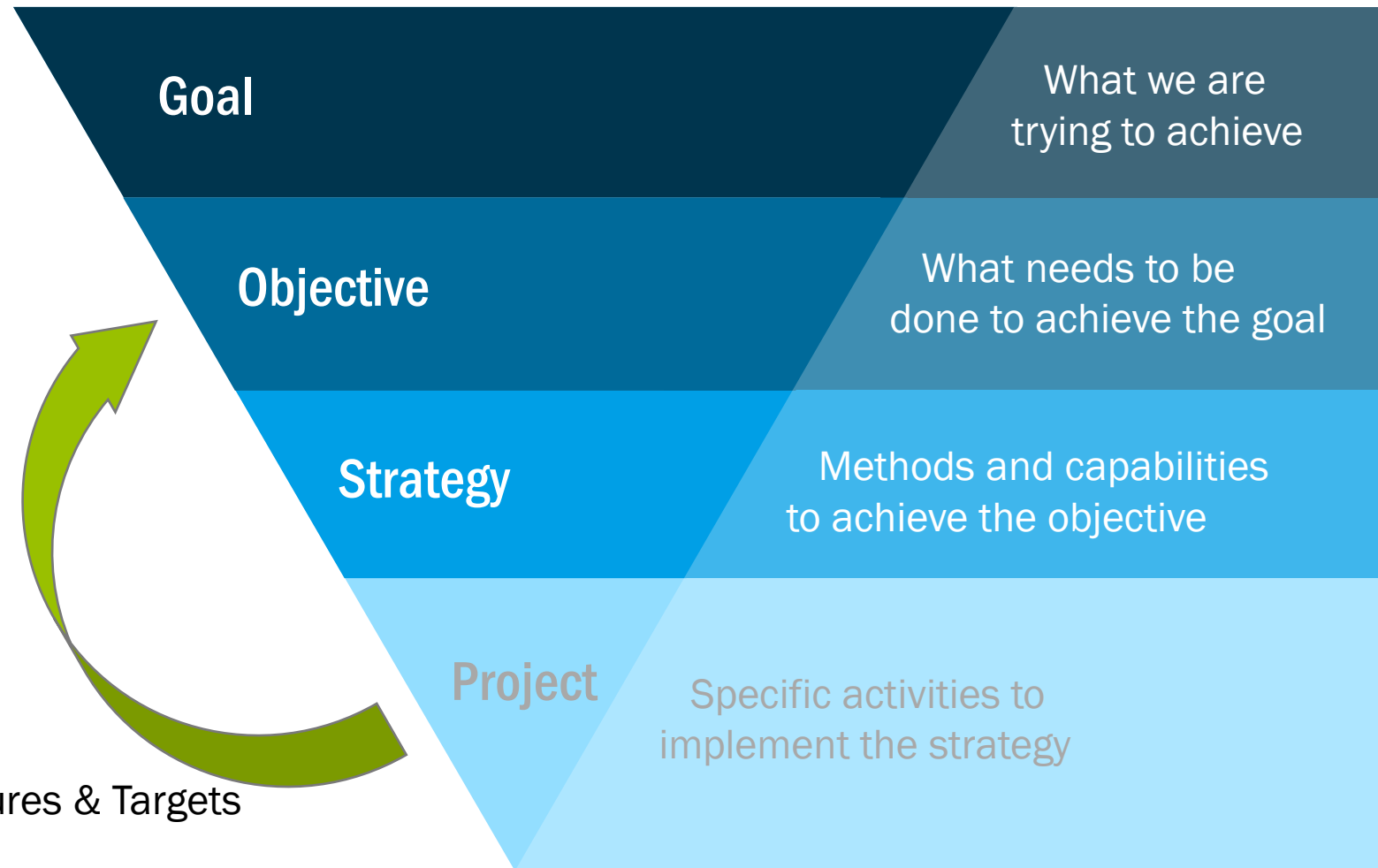
ATC Action Plan



Advocate for and pursue the implementation of innovative and low-stress active transportation infrastructure throughout Central Ohio.

Action Items:

- **Serve as experts** to advise the Transportation Advisory Committee (TAC).
- **Support achievement of all active transportation related goals** in current and future versions of the Metropolitan Transportation Plan (MTP), Active Transportation Plan (ATP), and Regional Sustainability Agenda (RSA).
- **Identify policies, programs, initiatives, and resources** that MORPC and other partners can pursue for low-stress network education and implementation.
- **Provide resources and support multi-jurisdictional coordination** in planning and implementation of active transportation infrastructure.



Performance Measures & Targets

2020-2050 Metropolitan Transportation Plan (MTP)



MORPC

Six Regional Goals

ENERGY

REDUCE PER CAPITA ENERGY CONSUMPTION AND PROMOTE ALTERNATIVE FUEL RESOURCES TO INCREASE AFFORDABILITY AND RESILIENCE OF REGIONAL ENERGY SUPPLIES



NATURAL RESOURCES

PROTECT NATURAL RESOURCES AND MITIGATE INFRASTRUCTURE VULNERABILITIES TO MAINTAIN A HEALTHY ECOSYSTEM AND COMMUNITY



ECONOMIC OPPORTUNITY

POSITION CENTRAL OHIO TO ATTRACT AND RETAIN ECONOMIC OPPORTUNITY TO PROSPER AS A REGION AND COMPETE GLOBALLY



CREATE SUSTAINABLE NEIGHBORHOODS TO IMPROVE RESIDENTS' QUALITY OF LIFE



SUSTAINABLE NEIGHBORHOODS

INCREASE REGIONAL COLLABORATION AND EMPLOY INNOVATIVE TRANSPORTATION SOLUTIONS TO MAXIMIZE THE RETURN ON PUBLIC EXPENDITURES



COLLABORATION

USE PUBLIC INVESTMENTS TO BENEFIT THE HEALTH, SAFETY, AND WELFARE OF PEOPLE



HEALTH, SAFETY, & WELFARE

ATC Action Plan



MORPC
MID-OHIO REGIONAL PLANNING COMMISSION

2020-2050 MTP | Goals & Objectives

Goal: Create Sustainable Neighborhoods

- Objective: Encourage and support adoption of Complete Streets policies
- **2020 Benchmark: 14% of MORPC communities**
- 2025 Target: 20% of MORPC communities

Goal: Benefit the Health, Safety, and Welfare of People

- Objective: Reduce the number of fatalities and serious injuries from crashes
- 2020 Benchmark: 145 non-motorized fatalities and serious injuries
- 2025 Target: 8% reduction (133 non-motorized fatalities and serious injuries)

2020-2050 MTP | Goals & Objectives

Goal: Create Sustainable Neighborhoods

- Objective: Increase miles traveled on COG trails each year
- 2020 Benchmark: 11.5 million COG miles traveled
- 2025 Target: 14 million COG miles traveled

Goal: Reduce Per Capita Energy Consumption

- Objective: Reduce SOV commutes and increase walking/bicycling/transit
- 2020 Benchmark: 82% SOV; 6% walk/bike/transit
- 2025 Target: 80% SOV; 7% walk/bike/transit

2020-2050 MTP | Goals & Objectives

Goal: Create Sustainable Neighborhoods

- Objective: Increase bike and ped infrastructure
- 2020 Benchmark: 700 miles of bikeways; 40% of arterials and collectors w/sidewalk
- 2025 Target: 820 miles of bikeways; 45% of arterials and collectors w/sidewalk

Goal: Create Sustainable Neighborhoods

- Objective: Target infrastructure to serve more people and jobs
- 2020 Benchmark: 81% of population and 86% of jobs within $\frac{3}{4}$ mile of a bikeway
- 2025 Target: 85% of population and 90% of jobs within $\frac{3}{4}$ mile of a bikeway

ATC 2021 Schedule

- ~~Tuesday, January 26~~
- ~~9 am to 11 am~~



- Tuesday, April 13
- 9 am to 11 am

- Tuesday, October 19
- 9 am to 11 am

- Tuesday, July 13
- 9 am to 11 am

Member Roundtable



MORPC
MID-OHIO REGIONAL PLANNING COMMISSION

THANK YOU!

